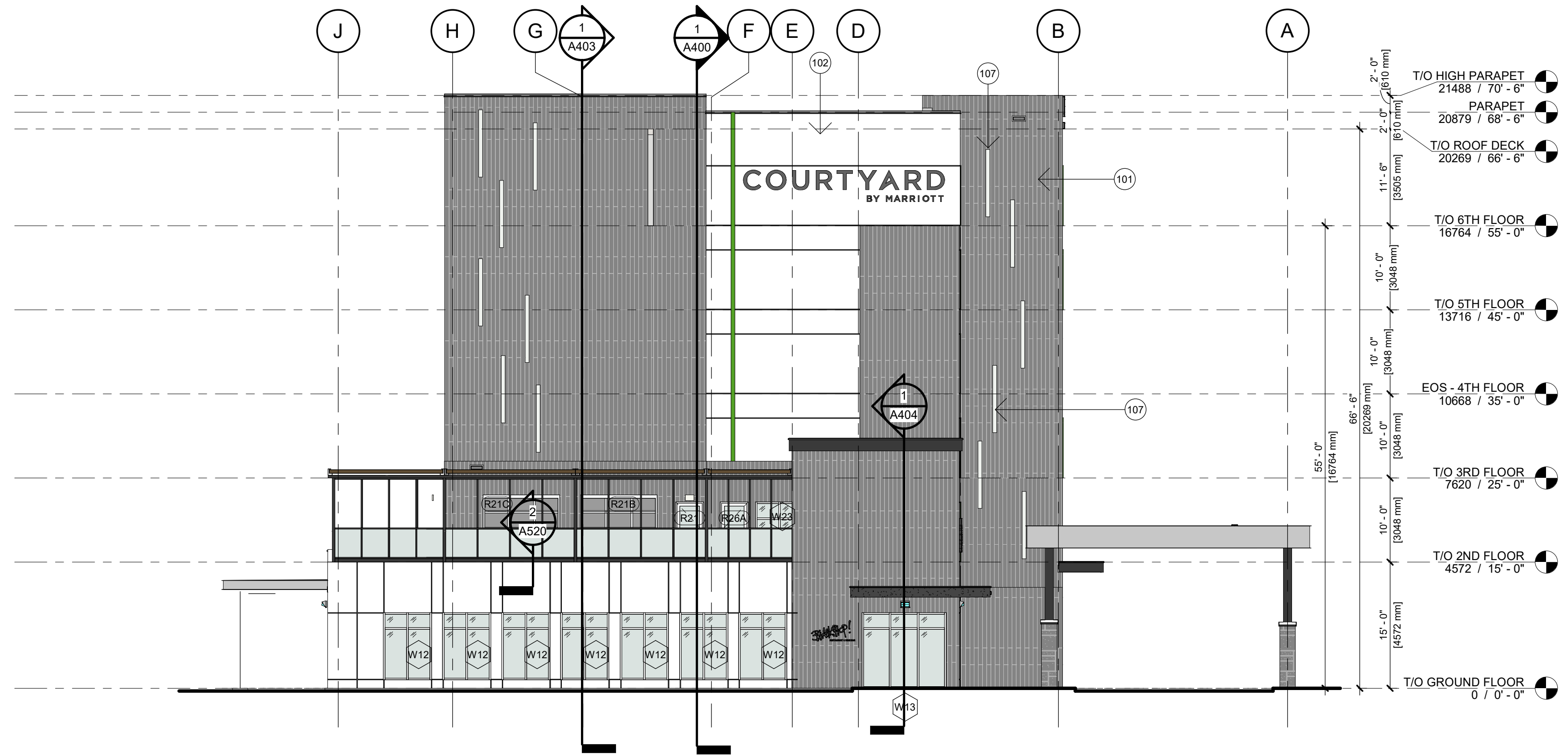




1 NORTH ELEVATION
A301 3/32" = 1'-0"



2 EAST ELEVATION
A301 3/32" = 1'-0"

BIRD COLLISION DETERRENCE:

- MINIMUM 90% OF ALL GLAZING FROM GRADE LEVEL TO 18M ABOVE GRADE TO RECEIVE 4mm VISUAL MARKERS APPLIED TO FIRST SURFACE OF THE GLASS WITH A MAXIMUM SPACING OF 50mm X 50mm AS PER OTTAWA BIRD SAFE DESIGN GUIDELINES, GUIDELINE 2.
- ALL EXTERIOR BUILDING LIGHTING TO BE:
 - DARK SKY COMPLAINT, FULL-CUTOFF
 - CONNECTED TO MOTION DETECTORS OR OTHER AUTOMATIC LIGHTING CONTROLS TO EXTINGUISH NON-ESSENTIAL LIGHTING BETWEEN 11PM AND 6AM
 - MINIMUM WATTAGE REQUIRED TO MEET ONTARIO BUILDING CODE
 - PER OTTAWA BIRD SAFE DESIGN GUIDELINES, GUIDELINE 6

EXTERIOR ELEVATION LEGEND

- 101 ALUMINIUM COMPOSITE MATERIAL (ACM)(COLOUR: GREY)
- 102 FIELD APPLIED EXTERIOR INSULATED FINISH SYSTEM (EIFS) WITH GROOVES (COLOUR: WHITE)
- 107 LIGHT FIXTURE
- 108 STONE VENEER(COLOUR: GREY)
- 110 EIFS (COLOUR: GREEN)
- 112 ILLUMINATED SIGNAGE- WALL MOUNTED AS PER BRAND STANDARD

No.	By	Description	Date
7	MA	ISSUED FOR SPAII	23-10-12
6	MA	ISSUED FOR TENDER	23-09-29
5	MA	ISSUED FOR PRELIMINARY TENDER	23-09-14
4	MA	REVISED AS PER BRAND COMMENTS	23-06-16
3	MA	ISSUED FOR BRAND 30%	23-05-09
2	MA	ISSUED FOR SPA I	23-04-14
1	MA	CLIENT REVIEW & APPROVAL	23-02-22

ISSUANCE SCHEDULE

DO NOT SCALE DRAWINGS. USE ONLY DRAWINGS MARKED "ISSUED FOR CONSTRUCTION". VERIFY CONFIGURATIONS & DIMENSIONS ON SITE BEFORE BEGINNING WORK. NOTIFY ARCHITECT IMMEDIATELY OF ANY ERRORS, OMISSIONS OR DISCREPANCIES.

DEVELOPMENT CONSULTANT:
API CONSULTANTS INC.
1484 CORNWALL ROAD, UNIT 7
OAKVILLE, ONTARIO L6J 7W5
P: 905.337.7249

ARCHITECT:
SAPLYS ARCHITECTS INC.
55 ST. CLAIR AVE. W., SUITE 205
TORONTO, ONTARIO M4V 2Y7
P: 905.510.0995

CLIENT:
401 REAL ESTATE TRUST INC
2225 Eagle Street N
Cambridge, ON
N3H 4R7

PROFESSIONAL CERTIFICATION

PROJECT
COURTYARD
BY MARRIOTT

KANATA - MARRIOTT COURTYARD & RESTAURANT (SHELL ONLY)

40 FRANK NICHBOR PLACE
Kanata, ON
Closest Major Intersection: Silver Seven Rd & Palladium Dr.

DRAWING TITLE
ELEVATION I - NORTH & EAST

City File No. D07-12-23-006
City Plan No. 19002

BY	CHECK	ISSUED FOR
MJA	-	ISSUED FOR SPAII
PROJECT NO.:	SHEET NO.:	
S22-029	7	
SCALE:	As indicated	
ISSUE DATE:	23-10-12	

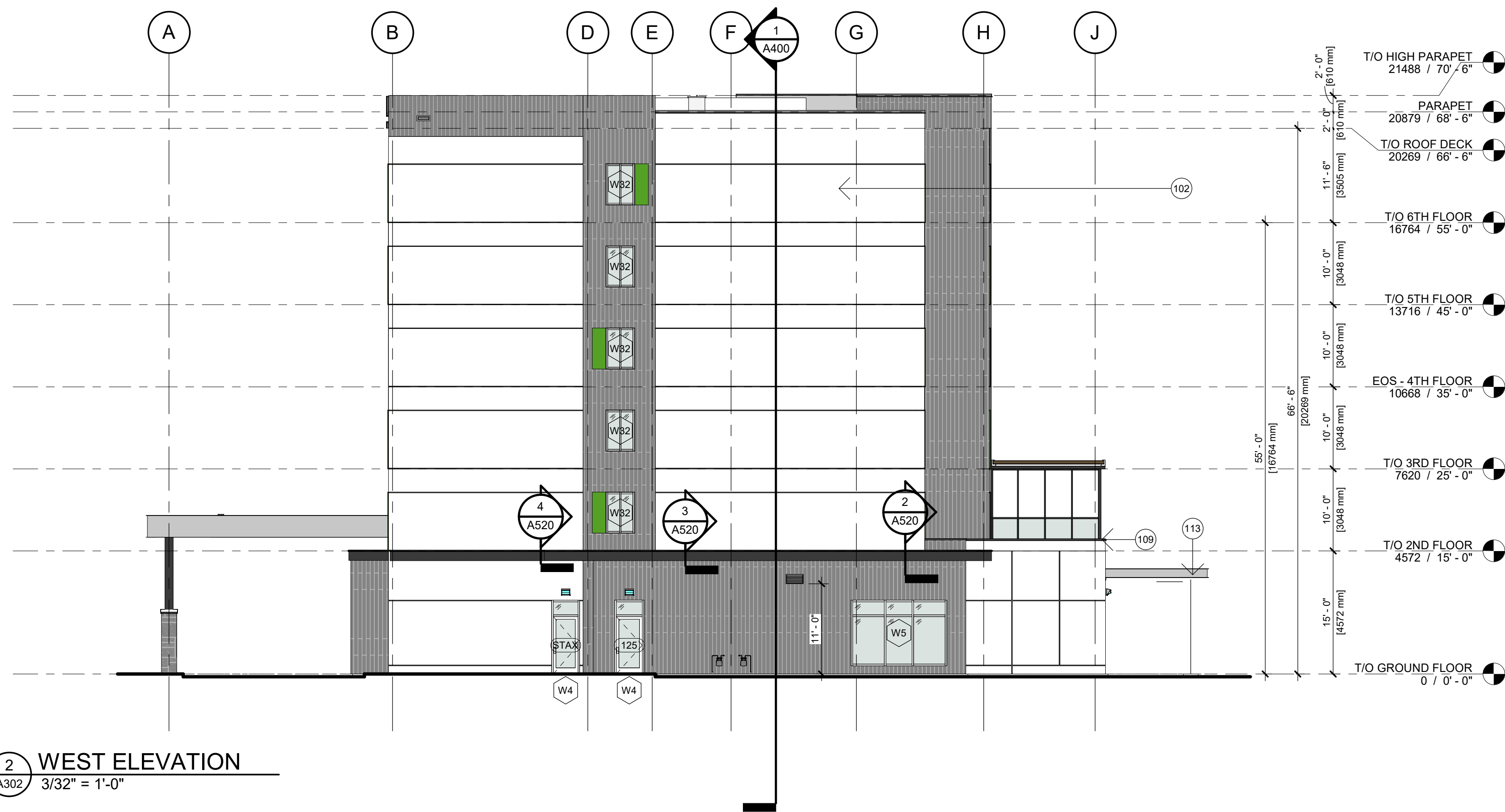
A301 7 SHEET ISSUE No.

© SAPLYS ARCHITECTS INC.

PLOT DATE: 2023-10-13 11:04:56 AM



1 SOUTH ELEVATION
A302 3/32" = 1'-0"



2 WEST ELEVATION
A302 3/32" = 1'-0"

BIRD COLLISION DETERRENCE:

- MINIMUM 90% OF ALL GLAZING FROM GRADE LEVEL TO 18M ABOVE GRADE TO RECEIVE 4mm VISUAL MARKERS APPLIED TO FIRST SURFACE OF THE GLASS WITH A MAXIMUM SPACING OF 50mm X 50mm AS PER OTTAWA BIRD SAFE DESIGN GUIDELINES, GUIDELINE 2.
- ALL EXTERIOR BUILDING LIGHTING TO BE:
 - DARK SKY COMPLIANT, FULL-CUTOFF
 - CONNECTED TO MOTION DETECTORS OR OTHER AUTOMATIC LIGHTING CONTROLS TO EXTINGUISH NON-ESSENTIAL LIGHTING BETWEEN 11PM AND 6AM
 - MINIMUM WATTAGE REQUIRED TO MEET ONTARIO BUILDING CODE
 - PER OTTAWA BIRD SAFE DESIGN GUIDELINES, GUIDELINE 6

EXTERIOR ELEVATION LEGEND

- 101 ALUMINIUM COMPOSITE MATERIAL (ACM)(COLOUR-GREY)
- 102 FIELD APPLIED EXTERIOR INSULATED FINISH SYSTEM (EIFS) WITH GROOVES (COLOUR: WHITE)
- 109 PREFINISHED METAL CAP FLASHING | FINISH: SEMI-GLOSS
- 110 EIFS (COLOUR: GREEN)
- 113 PREFINISHED ALUMINIUM PANELS

No.	By	Description	Date YY-MM-DD
7	MA	ISSUED FOR SPAII	23-10-12
6	MA	ISSUED FOR TENDER	23-09-29
5	MA	ISSUED FOR PRELIMINARY TENDER	23-09-14
4	MA	REVISED AS PER BRAND COMMENTS	23-06-16
3	MA	ISSUED FOR BRAND 30%	23-05-09
2	MA	ISSUED FOR SPA I	23-04-14
1	MA	CLIENT REVIEW & APPROVAL	23-02-22

ISSUANCE SCHEDULE

DO NOT SCALE DRAWINGS. USE ONLY DRAWINGS MARKED "ISSUED FOR CONSTRUCTION". VERIFY CONFIGURATIONS & DIMENSIONS ON SITE BEFORE BEGINNING WORK. NOTIFY ARCHITECT IMMEDIATELY OF ANY ERRORS, OMISSIONS OR DISCREPANCIES.

DEVELOPMENT CONSULTANT:

API CONSULTANTS INC.
1484 CORNWALL ROAD, UNIT 7
OAKVILLE, ONTARIO L6J 7W5
P: 905.337.7249

ARCHITECT:

SAPLYS ARCHITECTS INC.
55 ST. CLAIR AVE W., SUITE 205
TORONTO, ONTARIO M4V 2Y7
P: 905.510.0995

CLIENT:

401 REAL ESTATE TRUST INC
2225 Eagle Street N
Cambridge, ON
N3H 4R7

PROFESSIONAL CERTIFICATION

PROJECT

COURTYARD

BY MARRIOTT

KANATA - MARRIOTT COURTYARD & RESTAURANT (SHELL ONLY)

40 FRANK NICHBOR PLACE
Kanata, ON
Closest Major Intersection: Silver Seven Rd & Palladium Dr.

DRAWING TITLE

ELEVATION II - SOUTH & WEST

City File No. D07-12-23-006
City Plan No. 19002

BY: [] CHECK [] ISSUED FOR

Author: [] ISSUED FOR SPAII

PROJECT NO.: S22-029

SCALE: As indicated

ISSUE DATE: 23-10-12

SHEET NO.: 7

ISSUE No. A302

© SAPLYS ARCHITECTS INC.

PLOT DATE: 2023-10-13 11:05:06 AM