

ALL OF BLOCKS N, O, & P AND PART OF BLOCK Q REGISTERED PLAN 4M-153 AND PART OF LOT 5 CONCESSION 2 (RIDEAU FRONT) GEOGRAPHIC TOWNSHIP OF GLOUCESTER CITY OF OTTAWA FARLEY, SMITH & DENIS SURVEYING LTD. 2020

Scale 1: 200
0 2.5 5 10 15 20 metres

Metric Note
Distances and coordinates on this plan are in metres and can be converted to feet by dividing by 0.3048.

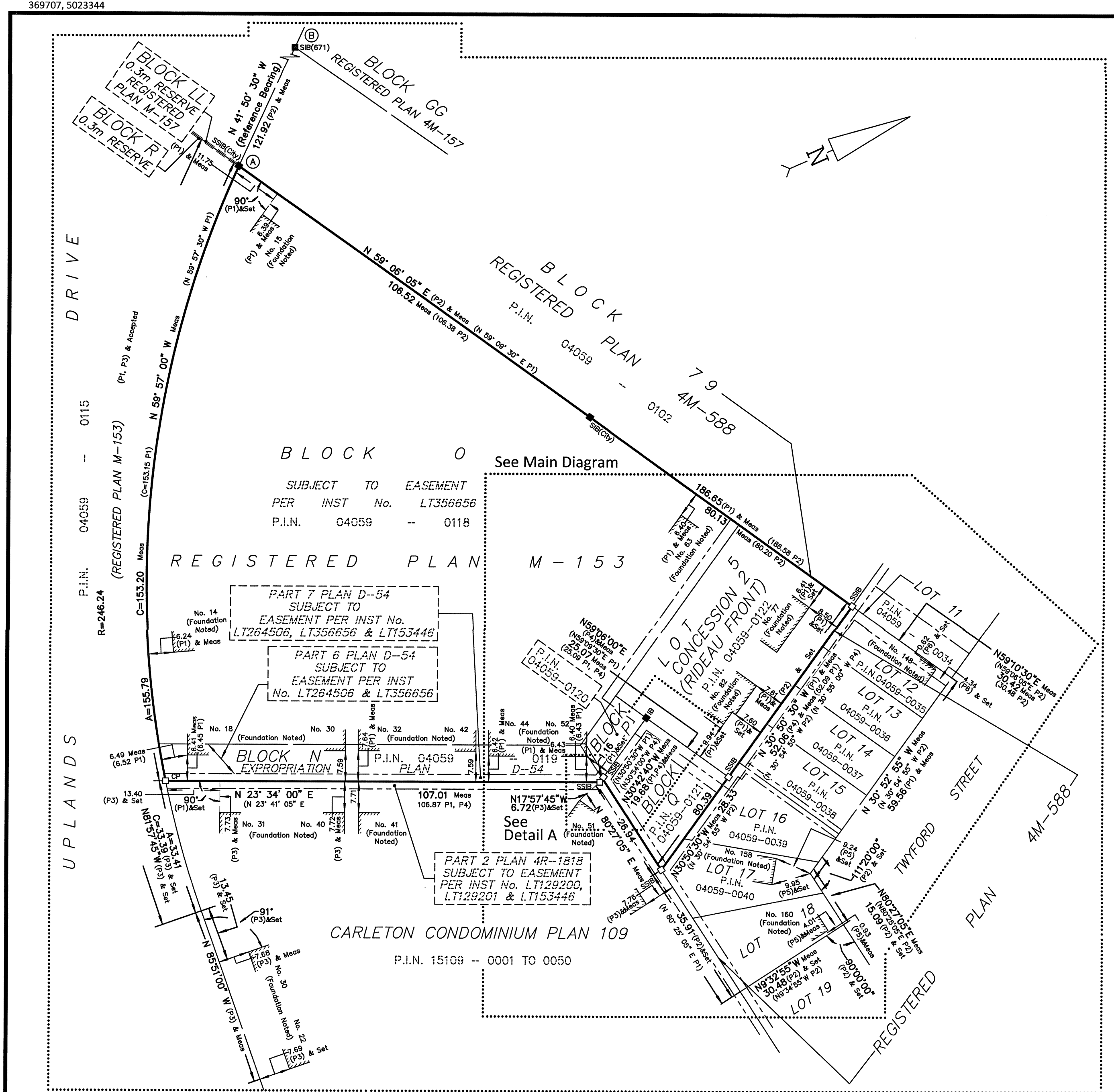
Distance Note
Distances shown on this plan are ground distances and can be converted to grid distances by multiplying by the combined scale factor of 0.99994.

Bearing Note
Bearings are MTM grid, derived from the Smart-Net Real Time Network. GPS observations on reference points A and B, shown hereon, having a bearing of N 41° 50' 30" W and are referred to the Central Meridian of MTM Zone 9 (76° 30' West Longitude) Nad-83 (Original).

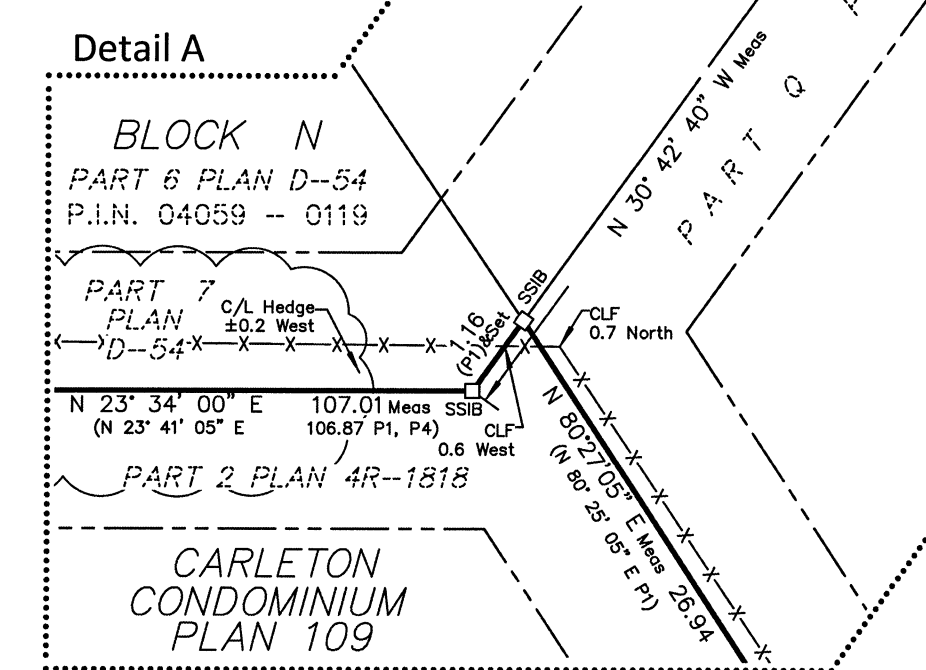
Elevation Notes
1. Elevations shown are geodetic and are referred to Geodetic Datum CGVD-1928 -1978.
2. It is the responsibility of the user of this information to verify that the job benchmark has not been altered or disturbed and that its relative elevation and description agrees with the information shown on this drawing.

Utility Notes
1. This drawing cannot be accepted as acknowledging all of the utilities and it will be the responsibility of the user to contact the respective utility authorities for confirmation.
2. Only visible surface utilities were located.
3. Underground utility data derived from City of Ottawa utility sheet reference: 43999k.p.
4. Sanitary and storm sewer grades and inverts were derived from: Field measurement.
5. A field location of underground plan by the pertinent utility authority is mandatory before any work involving breaking ground, probing, excavating etc.

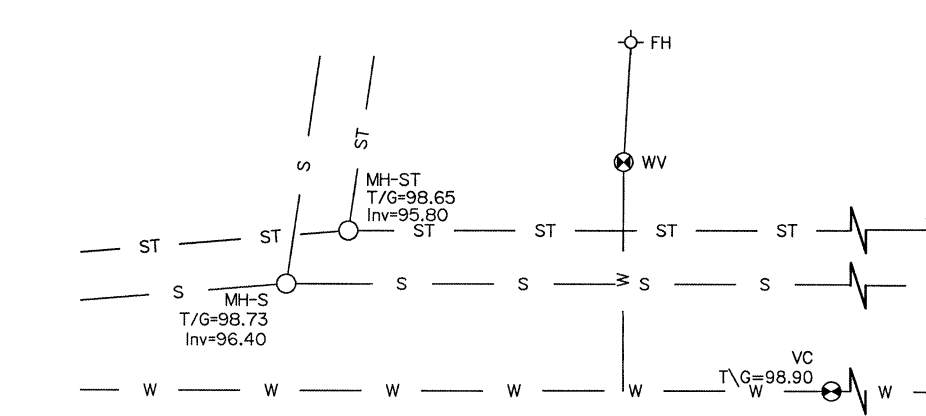
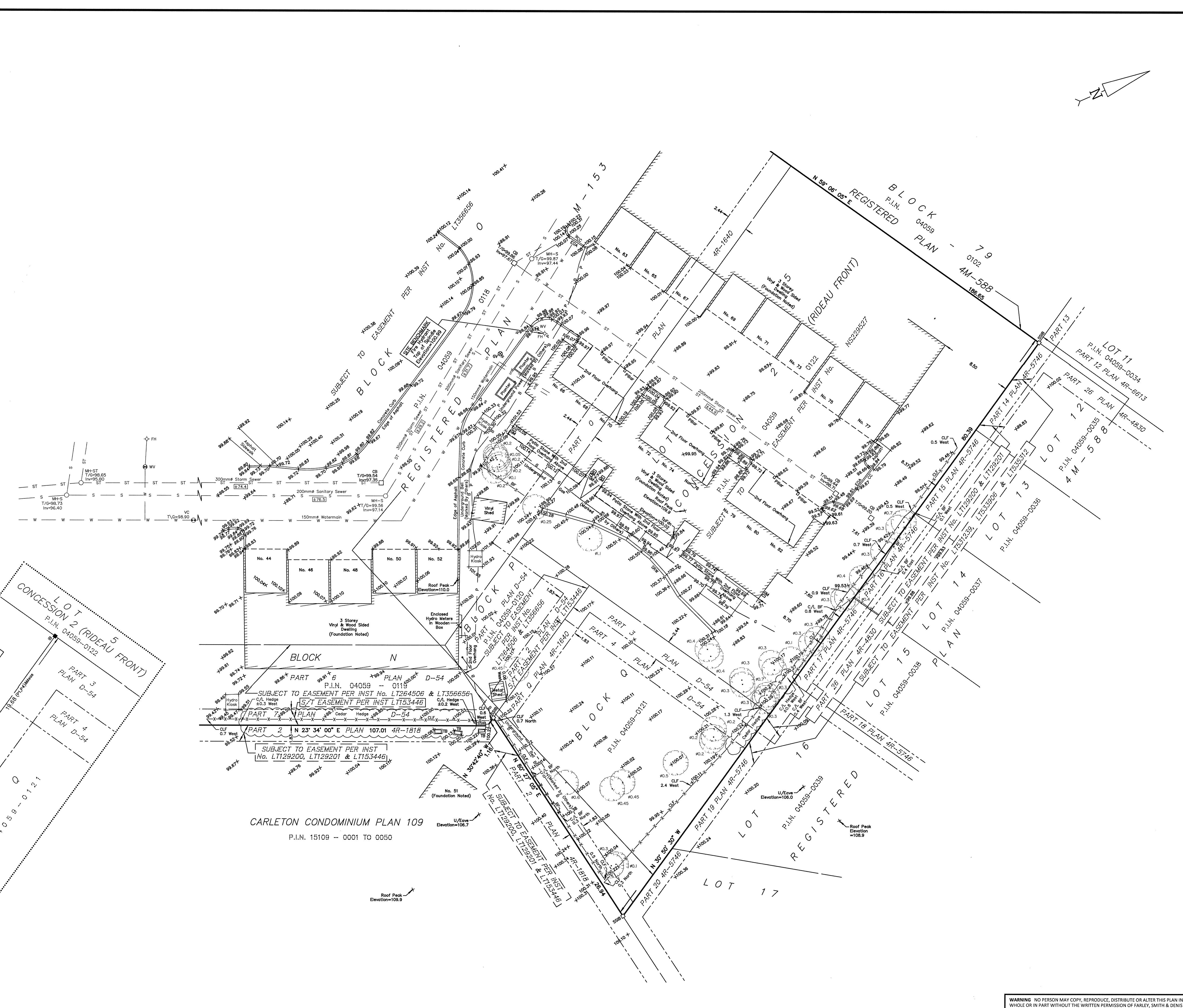
Notes & Legend
Denotes
- Survey Monument Planted
- Survey Monument Found
- Standard Iron Bar
- Short Standard Iron Bar
- Iron Bar
- Concrete Pin
- Measured
- Plan by (647) dated June 8, 1982
- Plan 4M-588
- Carleton Condominium Plan No. 109
- Expropriation Plan D-54
- Plan by (1287) dated May 7, 1991 (Job No. 66/91)
- Plan by (1287) dated October 17, 1998
- Maintenance Hole (Storm)
- Maintenance Hole (Sanitary)
- Valve Chamber (Watermain)
- Undergound Storm Sewer
- Undergound Sanitary Sewer
- Undergound Water
- Undergound Power
- Undergound Gas
- Undergound Bell
- Catch Basin
- Fire Hydrant
- Water Valve
- Gas Valve
- Gas Meter
- Unidentified Terminal Box
- Sign
- Diameter
- Chain Link Fence
- Board Fence
- Stone Retaining Wall
- Edge of Asphalt
- Concrete Curb
- Invert
- Top of Grate
- Underside of Eave
- Top of Foundation
- Centreline
- +65.00
- Top of Concrete Curb/Retaining Wall Elevation
- Property Line
- Deciduous Tree - The Symbol shown denotes location and trunk diameter only. Size of its' root system/overhead canopy may be smaller/larger than the symbol size depicted on this plan.



Scale 1: 750
0 7.5 15 30 45 60 75 metres



Scale 1: 100
0 2.5 5 7.5 10 metres



CARLETON CONDOMINIUM PLAN 109
P.I.N. 15109 -- 0001 to 0050

Surveyor's Certificate
I certify that:
1. This survey and plan are correct and in accordance with the Survey Act, the Surveyors Act and the Regulations made under them.
2. The survey was completed on the 2nd day of December, 2020.
Date: Dec 4/20
Daniel Robinson
Ontario Land Surveyor

FARLEY, SMITH & DENIS SURVEYING LTD.
ONTARIO LAND SURVEYORS
CANADA LAND SURVEYORS
190 COLONNADE ROAD, OTTAWA, ONTARIO K2E 7J5
TEL: (613) 727-8226 FAX: (613) 727-1826

WARNING: NO PERSON MAY COPY, REPRODUCE, DISTRIBUTE OR ALTER THIS PLAN IN WHOLE OR IN PART WITHOUT THE WRITTEN PERMISSION OF FARLEY, SMITH & DENIS SURVEYING LTD. © FARLEY, SMITH & DENIS SURVEYING LTD., 2020.