

LEGEND:

- EXISTING PROPERTY LINE
- STRUCTURE TO BE REMOVED
- SEWER TO BE REMOVED
- ASPHALT REMOVAL
- LANDSCAPE REMOVAL
- CONCRETE REMOVAL
- EXISTING CURB/RETAINING WALL REMOVAL

APPROVED
By Lily Xu at 10:20 am, Apr 02, 2024

LILY XU, MCIP, RPP
MANAGER, DEVELOPMENT REVIEW SOUTH
PLANNING, INFRASTRUCTURE & ECONOMIC
DEVELOPMENT DEPARTMENT, CITY OF OTTAWA

- NOTES: REMOVALS AND DEMOLITION**
- PRE-REMOVAL, THE CONTRACTOR MUST VISIT THE PREMISES IN ORDER TO BE FULLY AWARE OF EXISTING CONDITIONS ON SITE, INCLUDING ALL ELEMENTS TO BE REMOVED AND DEMOLISHED. NO CLAIM WILL BE ACCEPTED DUE TO A POOR EVALUATION OF THE WORK TO BE COMPLETED. THE CONTRACTOR IS RESPONSIBLE FOR LOCATING AND THE REQUEST FOR INTERRUPTION OF PUBLIC UTILITY SERVICES, SUCH AS GAS, TELEPHONE, POWER, CABLE, SEWERS, WATERMAIN, ETC. BEFORE PROCEEDING WITH WORK, COORDINATE WITH ALL APPLICABLE UTILITY COMPANIES.
 - FIRE HYDRANTS TO BE TAGGED AND BAGGED AND/OR PROTECTED AS INDICATED ON DRAWING. CURB, ASPHALT, SIDEWALK, AND GRANULAR BASE TO BE EXCAVATED WITHIN LIMITS OF DEMOLITION REMOVAL. THE CONTRACTOR MUST CARRY OUT NECESSARY SAW CUTS.
 - SEWER / WATERMAIN PIPES TO BE ABANDONED MUST BE CUT, FILL WITH UNSHRINKABLE CONCRETE CONFORMING TO OPSS 1359, AND CAPPED.
 - REMOVE AND DISPOSE SEWERS AS INDICATED. PLUG ANY SERVICE LATERALS TO BE ABANDONED.
 - THE CONTRACTOR MUST ENTIRELY REMOVE THE DEMOLITION WRECKAGE FROM THE CONSTRUCTION SITE OFFSITE IN ACCORDANCE WITH THE REQUIREMENTS OF THE MINISTRY OF ENVIRONMENT AND CLIMATE CHANGE (MOECC).
 - THE CONTRACTOR MUST DISCARD RECYCLABLE DEMOLITION MATERIALS IN COLLABORATION WITH A REGIONAL RECYCLING COMPANY.
 - ALL OTHER DEMOLITION MATERIALS MUST BE DISPOSED OFF-SITE AT AUTHORIZED LICENSED LANDFILLS AND IN CONFORMITY WITH THE APPLICABLE LAWS AND REGULATIONS. THE CONTRACTOR MUST BE ABLE TO PROVIDE, UPON REQUEST, COPIES OF THE DISPOSAL TICKETS TO THE OWNER'S REPRESENTATIVE.
 - SURFACES AND WORKS LOCATED OUTSIDE OF THE CONSTRUCTION WORK LIMIT MUST BE REINSTATED AS THEY WERE BEFORE BEGINNING OF WORK. CONTRACTOR IS RESPONSIBLE TO MAKE GOOD ON ANY DAMAGES TO EXISTING CURB AND ASPHALT NOT SCHEDULED FOR REMOVAL.
 - ALL MATERIALS, PRODUCTS AND OTHERS COMING FROM THE DEMOLITION BELONG TO THE CONTRACTOR, UNLESS SPECIFIED OTHERWISE.
 - THE CONTRACTOR MUST COMPLETE ALL REMOVALS AS SHOWN ON THE DRAWINGS AND AS REQUIRED TO MAKE THE WORK COMPLETE.
 - THE CONTRACTOR MUST PROTECT AND MAINTAIN IN PLACE THE EXISTING WORKS WHICH MUST REMAIN IN PLACE. IF THEY ARE DAMAGED, THE CONTRACTOR MUST IMMEDIATELY MAKE PROMPTLY REPORT SPILLS AND RELEASES POTENTIALLY CAUSING DAMAGE TO ENVIRONMENT TO AUTHORITY HAVING JURISDICTION OR INTEREST IN SPILL OR RELEASE INCLUDING CONSERVATION AUTHORITY, WATER SUPPLY AUTHORITIES, DRAINAGE AUTHORITY, ROAD AUTHORITY, AND FIRE DEPARTMENT.
 - THE CONTRACTOR MUST DECONTAMINATE EQUIPMENT AFTER WORKING IN POTENTIALLY CONTAMINATED WORK AREAS AND PRIOR TO SUBSEQUENT WORK OR TRAVEL ON CLEAN AREAS.
 - DO NOT DISCHARGE DECONTAMINATED WATER, OR SURFACE WATER RUNOFF, OR GROUNDWATER WHICH MAY HAVE COME IN CONTACT WITH POTENTIALLY CONTAMINATED MATERIAL, OFF SITE OR TO MUNICIPAL SEWERS.
 - CONTRACTOR NEEDS TO SUBMIT A TRAFFIC MANAGEMENT PLAN FOR APPROVAL ONE (1) WEEK PRIOR TO ANY WORK WITHIN THE ROAD LIMITS TO MEET THE REQUIREMENTS OF MTO BOOK 7. THE CONTRACTOR WILL BE REQUIRED TO IMPLEMENT ALL REQUIREMENTS OF THE MTO BOOK 7.
 - TOWN PUBLIC WORKS DEPARTMENT TO BE CONTACTED MINIMUM 7 DAYS PRIOR TO PLANNED DATE FOR CONNECTION TO EXISTING STORM SEWERS, SANITARY SEWERS, AND WATERMAIN, CONNECTION TO EXISTING TO TAKE PLACE IN THE PRESENCE OF APPROPRIATE MUNICIPALITY OF CASSELMAN STAFF.
 - THE CONTRACTOR MUST NOT PERFORM ANY TREE CUTTING DURING THE CORE MIGRATORY BIRDS NESTING PERIOD, WHICH IS APRIL 15 TO AUGUST 15.

- NOTES: GENERAL**
- THE CONTRACTOR MUST CONFORM TO ALL LAWS, CODES, ORDINANCES, AND REGULATIONS ADOPTED BY FEDERAL, PROVINCIAL OR MUNICIPAL GOVERNMENT COUNCILS AND GOVERNMENT AGENCIES, APPLYING TO WORK TO BE CARRIED OUT. WHEREVER STANDARDS, LAWS AND/OR REGULATIONS ARE MENTIONED THEY REFER TO THEIR CURRENT VERSIONS, MODIFICATIONS INCLUDED.
 - ALL MATERIALS AND CONSTRUCTION METHODS SHALL BE IN ACCORDANCE WITH THE LATEST EDITION OF THE ONTARIO PROVINCIAL STANDARD SPECIFICATIONS AND DRAWINGS (OPSS AND OPSD), THE ONTARIO MINISTRY OF ENVIRONMENT AND CLIMATE CHANGE, THE ONTARIO MINISTRY OF NATURAL RESOURCES, APPLICABLE CONSERVATION AUTHORITIES, THE MUNICIPAL STANDARD SPECIFICATIONS AND DRAWINGS, AND ALL OTHER GOVERNING AUTHORITIES AS THEY APPLY, UNLESS OTHERWISE INDICATED.
 - ALL MATERIAL SUPPLIED AND PLACED FOR PARKING LOT AND ACCESS ROAD CONSTRUCTION SHALL BE TO OPSS STANDARDS AND SPECIFICATIONS UNLESS OTHERWISE NOTED. CONSTRUCTION TO OPSS 206, 310 & 314. MATERIALS TO OPSS 1001, 1003 & 1010.
 - THE LOCATION OF EXISTING UNDERGROUND MUNICIPAL SERVICES AND PUBLIC UTILITIES AS SHOWN ON THE PLANS ARE APPROXIMATE. THE CONTRACTOR MUST DETERMINE THE EXACT LOCATION, SIZE, MATERIAL AND ELEVATION OF ALL EXISTING UTILITIES (ONSITE AND OFF-SITE) PRIOR TO ANY EXCAVATION WORK. DAMAGE TO ANY EXISTING SERVICES AND/OR EXISTING UTILITIES DURING CONSTRUCTION, WHETHER OR NOT SHOWN ON THE DRAWINGS MUST BE REPAIRED BY THE CONTRACTOR AT HIS OWN EXPENSE.
 - THE CONTRACTOR SHALL DETERMINE THE EXACT INVERT (GEODETIC ELEVATION), DIAMETER AND CONSTRUCTION MATERIAL OF THE EXISTING CONDUITS AT THE PROPOSED CONNECTIONS. THEY SHALL ALSO CARRY OUT, IF NECESSARY, EXPLORATORY DIGS IN ORDER TO DETERMINE THE EXACT LOCATION AND INVERTS OF EXISTING DUCK BANKS. THIS INFORMATION SHALL IMMEDIATELY BE PROVIDED TO THE CONSULTANT PRIOR TO START UNDERTAKING ANY MUNICIPAL SERVICES WORK AND A 48 HOUR PERIOD MUST BE ALLOCATED TO THE CONSULTANT FOR DESIGN REVIEW.
 - AT PROPOSED UTILITY CONNECTION POINTS AND CROSSINGS (I.E. STORM SEWER, SANITARY SEWER, WATER, ETC.) THE CONTRACTOR SHALL DETERMINE THE PRECISE LOCATION AND

- DEPTH OF EXISTING UTILITIES AND REPORT ANY DISCREPANCIES OR CONFLICTS TO THE ENGINEER BEFORE COMMENCING WORK.
- CONTRACTOR IS RESPONSIBLE FOR ALL LAYOUT FOR CONSTRUCTION PURPOSES.
- THE CONTRACTOR IS THE ONLY PERSON IN CHARGE OF SAFETY ON THE BUILDING SITE. THE CONTRACTOR IS RESPONSIBLE FOR PROVIDING ADEQUATE PROTECTION OF THE WORKERS, OTHER PERSONNEL AND THE GENERAL PUBLIC. PROTECTION OF MATERIALS, AS WELL AS MAINTAINING IN GOOD CONDITION THE COMPLETED WORKS AND WORKS TO BE COMPLETED. THE CONTRACTOR MUST PROVIDE AT ANY TIME:
 - A SUFFICIENT NUMBER OF FENCES, BARRIERS, POSTERS, GUARDS AND OTHERS TO ENSURE SAFETY.
 - NECESSARY CONVENIENCES FOR THE COMPLETION OF WORK SUCH AS HEATING, LIGHTING, VENTILATION ETC.
- CONTRACTOR IS RESPONSIBLE TO OBTAIN THE VARIOUS PERMITS/APPROVALS REQUIRED TO COMPLETE ALL THE WORKS AND ACTIVITIES AND BEAR COST OF THE SAME, SUCH AS BUT NOT LIMITED TO, ROAD CUT PERMITS, SEWER PERMITS, WATER PERMIT, ETC. AND THEIR ASSOCIATED COSTS.
- ALL ELEVATIONS ARE GEODETIC AND UTILIZE METRIC UNITS.
- JOB BENCH MARK - CONFIRM WITH PARSONS PRIOR TO UTILIZATION. THE CONTRACTOR MUST MAINTAIN BENCHMARKS AND LANDMARK REFERENCES AS IS, OTHERWISE THESE REFERENCES WILL BE REPOSITIONED BY A CERTIFIED LAND SURVEYOR AT THE CONTRACTOR'S EXPENSE.
- ALL GROUND SURFACES SHALL BE EVENLY GRADED WITHOUT PONDING AREAS AND LOW POINTS EXCEPT WHERE APPROVED SWALE OR CATCH BASIN OUTLETS ARE PROVIDED.
- IF GROUNDWATER IS ENCOUNTERED DURING CONSTRUCTION, DEWATERING OF EXCAVATIONS COULD BE REQUIRED. IT IS ASSUMED THAT GROUNDWATER WILL BE CONTROLLED BY SUMP AND PUMPING METHODS. THE CONTRACTOR SHALL OBTAIN A PERMIT TO TAKE WATER IF SITE CONDITIONS REQUIRE TAKING MORE THAN A TOTAL OF 400,000 L/DAY.
- STRIP AND REMOVE ALL TOPSOIL FROM IMPROVED AREAS. SITE PREPARATION INCLUDES CLEARING, GRUBBING, STRIPPING OF TOPSOIL, DEMOLITION, REMOVAL OF UNSUITABLE

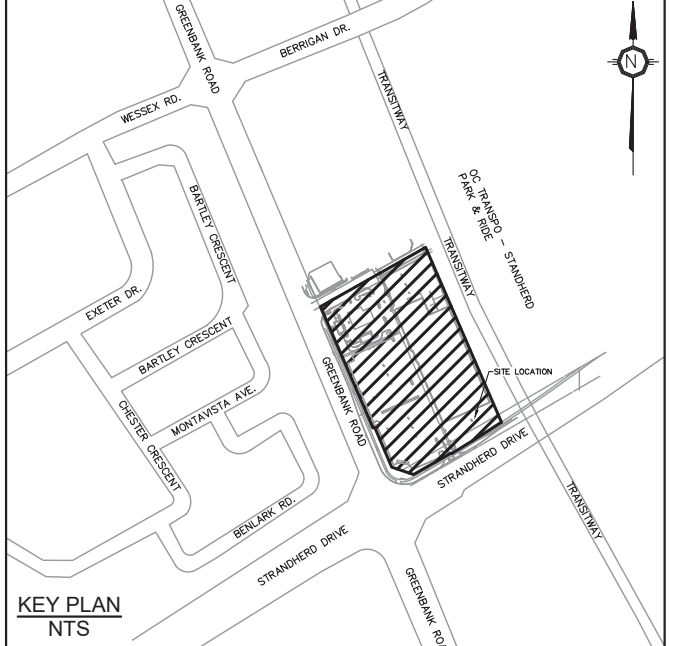
- MATERIALS, CUT, FILL AND ROUGH GRADING OF ALL AREAS TO RECEIVE FINISHED SURFACES.
- CONCRETE SHOULD EITHER BE MIXED AWAY FROM THE SITE OR SHOULD BE PREPARED ON PAVED SURFACES IF ONLY SMALL QUANTITIES ARE REQUIRED (I.E. MINOR REPAIRS); EXCESS CONCRETE MUST BE DISPOSED OFF-SITE AT A LOCATION THAT MEETS ALL REGULATORY REQUIREMENTS.
- THE WASHING OF CONCRETE TRUCKS AND OTHER EQUIPMENT USED FOR MIXING CONCRETE SHOULD NOT BE CARRIED OUT WITHIN 30 METERS OF A WATERCOURSE OR WETLAND AND SHOULD TAKE PLACE OUTSIDE OF THE WORK SITE.
- ALL CONCRETE TRUCKS SHOULD COLLECT THEIR WASH WATER AND RECYCLE IT BACK INTO THEIR TRUCKS FOR DISPOSAL OFF-SITE AT A LOCATION MEETING ALL REGULATORY REQUIREMENTS.
- THE CONTRACTOR SHALL ENSURE THAT ALL EXCAVATED SURPLUS MATERIALS THAT WILL BE REQUIRED TO BE DISPOSED OFFSITE BE STOCKPILED TEMPORARILY FOR SAMPLING PRIOR TO BEING LOADED TO OFFSITE.
- MINIMIZE DISTURBANCE TO EXISTING VEGETATION DURING THE EXECUTION OF ALL WORKS.
- TRENCHING, BACKFILLING AND COMPACTING MUST CONFORM TO OPS 401.
- DEWATERING OF PIPELINE, UTILITY AND ASSOCIATED STRUCTURE EXCAVATIONS TO BE COMPLETED AS PER OPS 517.
- THE CONTRACTOR MUST CONTROL SURFACE RUNOFF FROM PRECIPITATION DURING CONSTRUCTION.
- FOR ALL GEOTECHNICAL WORK, CONTRACTOR TO REFER TO "GEOTECHNICAL INVESTIGATION, CANADIAN TIRE STORE #442, GREENBANK ROAD, NEPEAN, ONTARIO, BY JACQUES, WHITFORD AND ASSOCIATES LIMITED, DATED JANUARY 31, 2000.
- REMOVE FROM SITE ALL EXCESS EXCAVATED MATERIAL UNLESS OTHERWISE DIRECTED FROM THE ENGINEER. EXCAVATE AND REMOVE ALL ORGANIC MATERIAL AND DEBRIS LOCATED WITHIN THE PROPOSED BUILDING, PARKING AND ROADWAY LOCATIONS.
- THE CONTRACTOR IS RESPONSIBLE FOR ALL EXCAVATION, BACKFILL AND REINSTATEMENT OFF ALL AREAS DISTURBED DURING CONSTRUCTION TO EXISTING CONDITIONS OR BETTER AND ALL ASSOCIATED WORKS TO THE SATISFACTION OF THE CONSULTANT AND MUNICIPAL AUTHORITIES. ASPHALT REINSTATEMENT MUST BE IN ACCORDANCE WITH OPSS 310. LANDSCAPE AREAS TO BE REINSTATED WITH 150 mm OF TOPSOIL AND SOD IN ACCORDANCE WITH OPSS 802 AND OPSS 803.
- DURING THE CONSTRUCTION PERIOD THE CONTRACTOR IS RESPONSIBLE FOR INSTALLING AND MAINTAINING TEMPORARY TRAFFIC SIGNAGE, INCLUDING TRAFFIC SIGNS, TRAFFIC MARKINGS AND TEMPORARY TRAFFIC LIGHTS, AND FLAGMEN, AS REQUIRED BY THE OWNER, THE CONSULTANT, THE MUNICIPALITY, THE MTO, AND OTHER GOVERNING AUTHORITIES.
- CONSTRUCTION REQUIRE TAKING MORE THAN A TOTAL OF 400,000 L/DAY.
- CONSTRUCT CONCRETE SIDEWALK AS PER OPSD 310.020 AND OPSS 351. TACTILE WALKING SURFACE INDICATORS PER OPSS 351.

TURNER FLEISCHER

Turner Fleischer Architects Inc.
67 Lesmill Road
Toronto, ON, M3B 2T8
T 416 425 2222
turnerfleischer.com

This drawing, as an instrument of service, is provided by and is the property of Turner Fleischer Architects Inc. The user shall not make any copies, modifications, or alterations to this drawing without the written consent of Turner Fleischer Architects Inc. The user shall be responsible for the accuracy of the information, mechanical, electrical, etc. information shown on this drawing. Refer to the appropriate contract documents before proceeding with the work. Construction must conform to all applicable codes and requirements of authorities having jurisdiction. The contractor working from drawings not specifically marked for construction assumes full responsibility and bears costs for any corrections or damages resulting from his work.

The site plan prepared by Turner Fleischer is based on a legal survey showing the boundaries of the land together with the current location of any existing buildings, features or improvements prepared by J.D. BARNES LIMITED, dated 2020-12-22 as provided by CANADIAN TIRE.



PARSONS

1223 MICHAEL STREET, SUITE 103, OTTAWA, ONTARIO K1J 7T2
Tel: 613-728-4160 Fax: 613-729-7105

TOPOGRAPHIC INFORMATION & BENCHMARK

SURVEY COMPLETED BY ANNIS, O'SULLIVAN, VOLLEBEKK LTD. ON NOVEMBER 9TH 2022. ELEVATIONS SHOWN ARE GEODETIC AND ARE REFERRED TO THE CGVD28 GEODETIC DATUM, DERIVED FROM CONTROL MONUMENT NO. 016680071 HAVING AN ELEVATION OF 99.742m.

NO.	DATE	DESCRIPTION	BY
1	2023-10-26	RE-ISSUED FOR SITE PLAN APPLICATION	MT
2	2023-05-18	ISSUED FOR SITE PLAN APPLICATION	PC
3			

BARRHAVEN
STORE No. 442

PROJECT
2501 GREENBANK RD
CANADIAN TIRE STORE EXPANSION
BARRHAVEN, ONTARIO

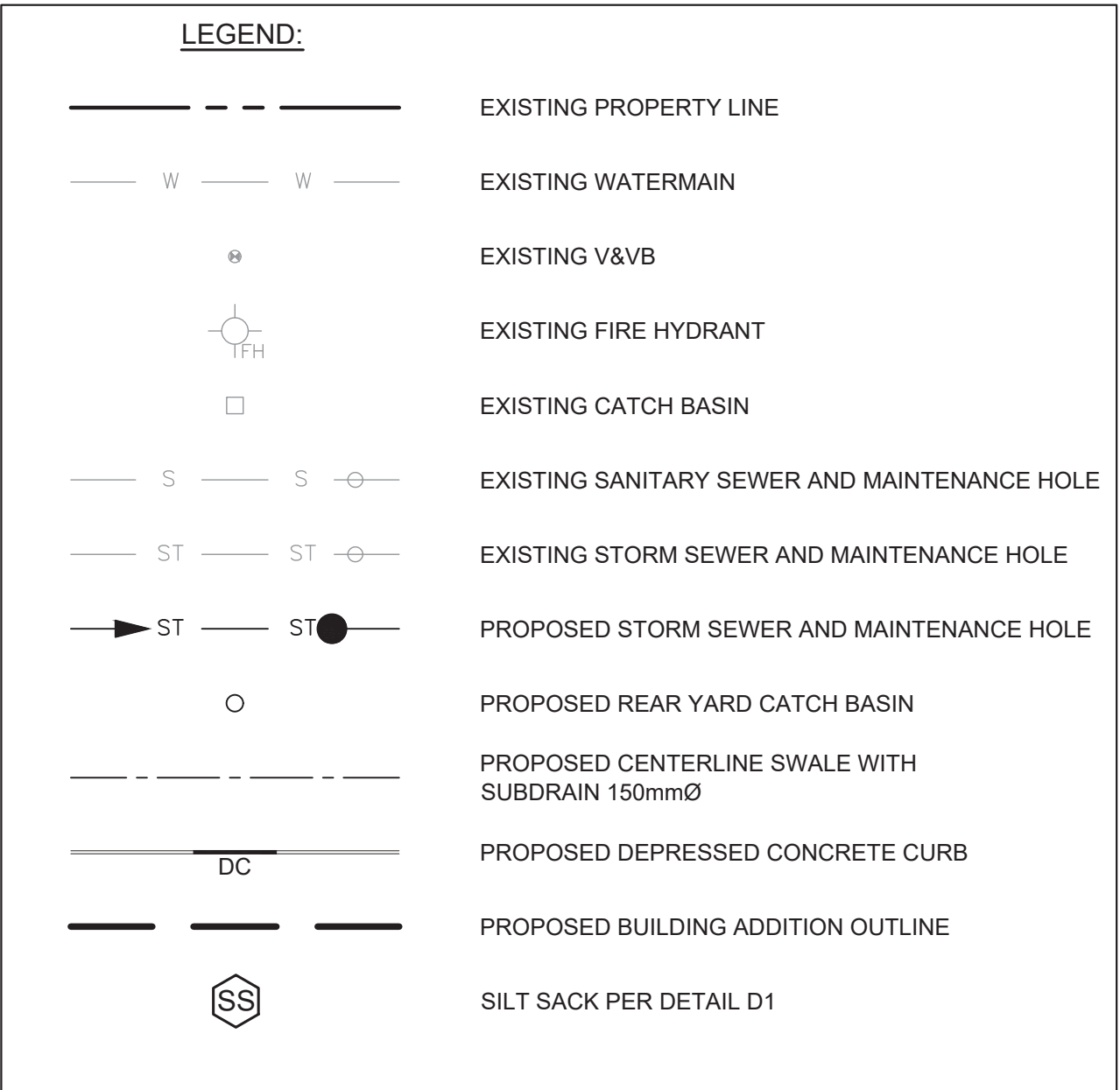
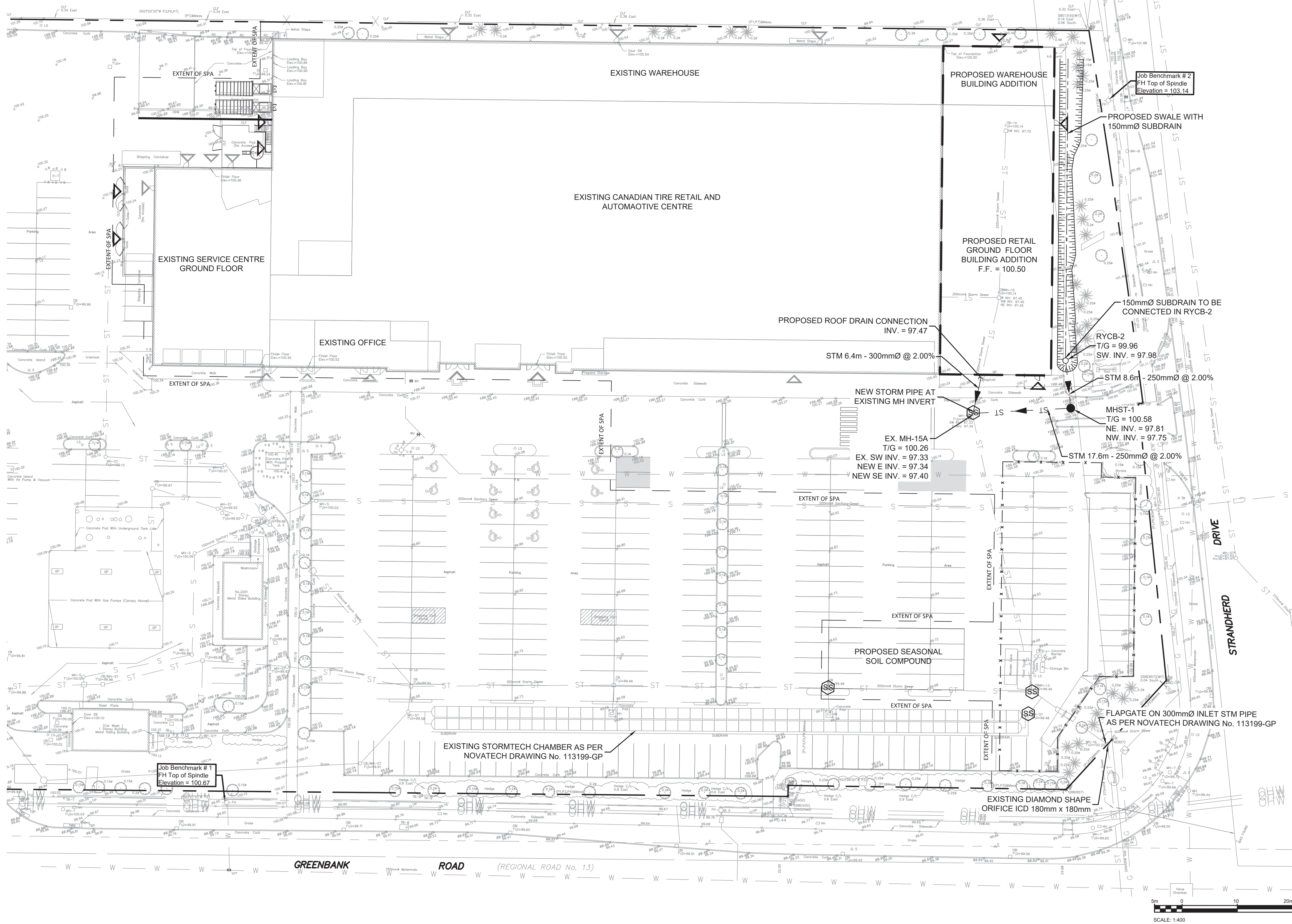
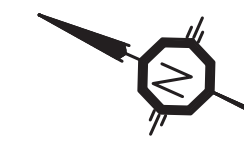
DRAWING
REMOVAL PLAN

PROJECT NO: 478461
PROJECT DATE: 2022-09-23
DRAWN BY: BV
CHECKED BY: MT
SCALE: As indicated
As indicated

PROFESSIONAL ENGINEER
B. VILLENEUVE
100553987
2023-10-26
PROVINCE OF ONTARIO

DRAWING NO: **C101**

#118206 - 007-23-04064



NOTES: SEWER

1. CONTRACTOR TO CONFIRM ELEVATION OF EXISTING STORM AND SANITARY SEWERS AT PROPOSED CONNECTION POINTS AND REPORT ANY DISCREPANCIES TO THE ENGINEER BEFORE COMMENCING ANY WORK.
2. ALL WORK SHALL BE PERFORMED AS APPLICABLE IN ACCORDANCE WITH OPSS 407, AND 410.
3. PIPE MATERIAL TO BE PVC SDR-35 AND CONFORMING TO OPSS 1841, UNLESS INDICATED OTHERWISE. PVC SEWERS TO BE INSTALLED PER OPSS 802.010 (MODIFIED). BEDDING AND COVER MATERIALS TO BE OPSS 1010 GRANULAR 'A' CRUSHER-RUN LIMESTONE BEDDING COMPACTED TO 95% SPMD.
4. ALL SEWERS WITH LESS THAN 1.5 METERS OF COVER ARE SUBJECT TO INSULATION PIPE BACKFILL MATERIAL TO BE APPROVED NATIVE MATERIAL OR SELECT SUBGRADE MATERIAL IN CONFORMANCE WITH OPSS 212.
5. ALL MAINTENANCE HOLES AND CATCH BASIN MAINTENANCE HOLES TO BE 1200mmØ AS PER OPSS 701.010, UNLESS INDICATED OTHERWISE. MAINTENANCE HOLES AND CATCH BASIN MAINTENANCE HOLES TO BE INSTALLED PER OPSS 407.
6. ALL CATCH BASINS TO BE 600x600mm AS PER OPSS 705.010, UNLESS INDICATED OTHERWISE. CATCH BASINS TO BE INSTALLED PER OPSS 407.
7. EXCAVATING, BACKFILLING, AND COMPACTING REQUIRED FOR MAINTENANCE HOLES, CATCH BASIN MAINTENANCE HOLES, AND CATCH BASINS TO BE COMPLETED AS PER OPSS 402. THEY ARE TO BE BACKFILLED WITH OPSS GRANULAR 'B' COMPACTED TO 98% SPMD. JOINTS BETWEEN SECTIONS TO BE WRAPPED WITH NON-WOVEN GEOTEXTILE.
8. FOR STORM STRUCTURES: CAST IRON CATCH BASIN MAINTENANCE HOLE COVER AS PER OPSS 401.010 TYPE 'B' AND CAST IRON CATCH BASIN COVER AS PER OPSS 402.020.
9. THE CONTRACTOR IS RESPONSIBLE FOR MAKING OR ARRANGING ALL CONNECTIONS TO THE EXISTING SEWERS AS PER MUNICIPAL REQUIREMENTS. PRIOR TO CONNECTION, THE CONTRACTOR MUST PROVIDE, TO THE CONSULTANT/ENGINEER AND THE CITY FOR APPROVAL, ALL TEST RESULTS PERFORMED ON THE INTERNAL SERVICES.
10. ADVISE THE CITY PUBLIC WORKS AT LEAST 72 HOURS IN ADVANCE BEFORE ANY CONNECTION TO THE TOWN SERVICES. CO-ORDINATE WITH TOWN AS REQUIRED.
11. TERMINATE AND PLUG ALL SERVICE CONNECTIONS AT 1.0 m FROM EDGE OF THE BUILDING.
12. ALL SEWERS TO BE C.C.T.V. INSPECTED BY THE CONTRACTOR AS PER OPSS 409. TWO COPIES OF THE INSPECTION REPORT MUST BE PROVIDED TO THE CONSULTANT AND THE C.C.T.V. INSPECTION IN DVD FORMAT ONLY.
13. SUBDRAIN KNOCKOUT (KO) WILL BE PRE-MANUFACTURED WITH CATCH BASINS AND MAINTENANCE HOLES.
14. EXISTING STORMTECH CHAMBERS LOCATED ON THE SOUTH WEST END OF THE PARKING LOT, PARALLEL TO GREENBANK (SEE PLAN C102), TO BE KEPT AND PROTECT, FREE OF ANY CONSTRUCTION DEBRIS OR ANY OTHER DAMAGES DURING CONSTRUCTION.

APPROVED
By Lily Xu at 10:20 am, Apr 02, 2024

Lily Xu
LILY XU, MCIP, RPP
MANAGER, DEVELOPMENT REVIEW SOUTH
PLANNING, INFRASTRUCTURE & ECONOMIC
DEVELOPMENT DEPARTMENT, CITY OF OTTAWA

EROSION AND SEDIMENT CONTROL MEASURES:

- CONTRACTOR IS RESPONSIBLE FOR ALL INSTALLATION, MONITORING, REPAIR AND REMOVAL OF ALL EROSION AND SEDIMENT CONTROL FEATURES. THE CONTRACTOR SHALL IMPLEMENT BEST MANAGEMENT PRACTICES, TO PROVIDE FOR PROTECTION OF THE AREA DRAINAGE SYSTEM AND THE RECEIVING WATERCOURSE. DURING CONSTRUCTION ACTIVITIES, THE CONTRACTOR ACKNOWLEDGES THAT FAILURE TO IMPLEMENT APPROPRIATE EROSION AND SEDIMENT CONTROL MEASURE MAY BE SUBJECT TO PENALTIES IMPOSED BY ANY APPLICABLE REGULATORY AGENCY.
 - SEDIMENT AND EROSION CONTROL PLAN OBJECTIVES:
 - PREVENT SOIL EROSION. THIS CAN RESULT FROM STREAMING RAIN WATER OR WIND EROSION DURING CONSTRUCTION.
 - PREVENT SEDIMENT DEPOSITS IN THE SEWER PIPES AND NEARBY COLLECTING STREAMS (AS APPLICABLE).
 - PREVENT AIR POLLUTION FROM PARTICULATE MATTER AND DUST.
- 1. PRIOR TO START OF CONSTRUCTION:**
- PRIOR TO THE REMOVAL OF ANY VEGETATIVE COVER, MOVING OF SOIL AND CONSTRUCTION:
 - INSTALL SILT FENCE (AS PER OPSS 219-110) ALONG DITCHES IMMEDIATELY DOWNSTREAM FROM AREAS TO BE DISTURBED.
 - INSTALL FILTER CLOTH ON DOWNSTREAM MANHOLE COVERS.
 - INSTALL SILTSACK FILTERS IN ALL CONCRETE CATCH BASINS STRUCTURES.
 - INSPECT MEASURES IMMEDIATELY AFTER INSTALLATION.
 - THE CONTRACTOR MUST SET UP THE MEASURES INDICATED ON THE PLAN, INSPECT THEM FREQUENTLY AND CLEAN AND REPAIR OR REPLACE THE DETERIORATED STRUCTURES. AT THE END OF THE CONSTRUCTION PERIOD, THE CONTRACTOR IS RESPONSIBLE FOR REMOVAL OF THE TEMPORARY STRUCTURES AND RECONDITIONING THE AFFECTED AREAS
- 2. DURING CONSTRUCTION:**
- SEDIMENT AND EROSION CONTROL MEASURES TO BE CONSTRUCTED AS PER OPSS 805.
 - WHEN SEDIMENT AND EROSION CONTROL MEASURES MUST BE REMOVED TO COMPLETE A PORTION OF THE WORK, THE SAME MEASURES MUST BE REINSTATED UPON THE WORKS COMPLETION.
 - WORK TO BE DONE IN THE VICINITY OF MAJOR WATERWAYS TO BE CARRIED OUT FROM JULY AND SEPTEMBER ONLY.
 - MINIMIZE THE EXTENT OF DISTURBED AREAS AND THE DURATION OF EXPOSURE.
 - PROTECT DISTURBED AREAS FROM RUNOFF.
 - PROVIDE TEMPORARY COVER SUCH AS SEEDING OR MULCHING IF DISTURBED AREA WILL NOT BE REHABILITATED SHORTLY.
 - INSPECT STRAW BALE FLOW CHECK DAMS, SILT FENCES, SILT SACKS, AND CATCH BASIN SUMPS REGULARLY AND AFTER EVERY MAJOR STORM EVENT. CLEAN AND REPAIR WHEN NECESSARY.
 - PLAN TO BE REVIEWED AND REVISED AS REQUIRED DURING CONSTRUCTION.
 - EROSION CONTROL FENCING TO BE ALSO INSTALLED AROUND THE BASE OF ALL STOCKPILES.
 - DO NOT LOCATE TOPSOIL PILES AND EXCAVATION MATERIAL CLOSER THAN 2.5m FROM ANY PAVED SURFACE, OR ONE WHICH IS TO BE PAVED BEFORE THE PILE IS REMOVED. ALL TOPSOIL PILES ARE TO BE SEEDED IF THEY ARE TO REMAIN ON SITE LONG ENOUGH FOR SEEDS TO GROW (LONGER THAN 30 DAYS) WHEN STORING SOIL ON SITE IN PILES THE CONTRACTOR MUST COVER EACH PILE WITH TAPPS, STRAW OR A GEOTEXTILE FABRIC TO AVOID FINE PARTICLE TRANSPORT BY WIND AND/OR STREAMING RAIN WATER.
 - CONTROL WIND-BLOWN DUST OFF SITE TO ACCEPTABLE LEVELS BY SEEDING TOPSOIL PILES AND OTHER AREAS TEMPORARILY (PROVIDE WATERING AS REQUIRED). FOR DUST CONTROL, CONTRACTOR TO APPLY CALCIUM CHLORIDE (TYPE I - OPSS 2501 AND CAN/CSSB-15-1) AND WATER WITH EQUIPMENT APPROVED BY THE OWNER'S REPRESENTATIVE AT RATE IN

3. AFTER CONSTRUCTION:

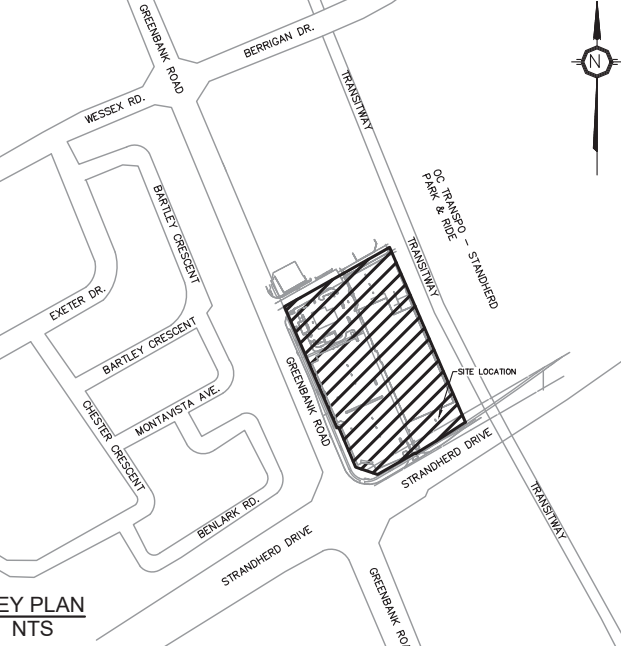
- ACCORDANCE TO OPSS 506 WHEN DIRECTED BY OWNER'S REPRESENTATIVE.
- ALL EROSION CONTROL STRUCTURE TO REMAIN IN PLACE UNTIL ALL DISTURBED GROUND SURFACES HAVE BEEN STABILIZED EITHER BY PAVING OR RESTORATION OF VEGETATIVE GROUND COVER. SEDIMENT CAPTURE SILT SACKS MUST BE MAINTAINED AND CANNOT BE REMOVED UNTIL ALL LANDSCAPING AREAS ARE COMPLETED.
- NO ALTERNATE METHODS OF EROSION PROTECTION SHALL BE PERMITTED UNLESS APPROVED BY THIS CONSULTING ENGINEER AND THE TOWN DEPARTMENT OF PUBLIC WORKS.
- CONTRACTOR RESPONSIBLE FOR MUNICIPAL ROADWAY AND SIDEWALK TO BE CLEANED OF ALL SEDIMENT FROM VEHICULAR TRACKING ETC. AT THE END OF EACH WORK DAY.
- DURING WET CONDITIONS, TIRES OF ALL VEHICLES/EQUIPMENT LEAVING THE SITE ARE TO BE SCRAPPED.
- ANY MUD/MATERIAL TRACKED ONTO THE ROAD SHALL BE REMOVED IMMEDIATELY BY HAND OR RUBBER TIRE LOADER.
- TAKE ALL NECESSARY STEPS TO PREVENT BUILDING MATERIAL, CONSTRUCTION DEBRIS OR WASTE BEING SPILLED OR TRACKED ONTO ADJACENT PROPERTIES OR PUBLIC STREETS DURING CONSTRUCTION AND PROCEED IMMEDIATELY TO CLEAN UP ANY AREAS SO AFFECTED.
- PROVIDE GRAVEL ENTRANCE WHEREVER EQUIPMENT LEAVES THE SITE TO PROVIDE MUD TRACKING ONTO PAVED SURFACES. GRAVEL BED SHALL BE A MINIMUM OF 10m LONG, 4m WIDE, AND 0.15m DEEP AND SHALL CONSIST OF COARSE MATERIAL, MAINTAIN GRAVEL ENTRANCE IN CLEAN CONDITION.
- PROVIDE PERMANENT COVER CONSISTING OF TOPSOIL AND SEED TO DISTURBED AREAS.
- ALL SEDIMENT AND EROSION CONTROL MEASURES TO BE REMOVED BY THE CONTRACTOR FOLLOWING THE COMPLETION OF WORK AND AFTER DISTURBED AREAS HAVE BEEN REHABILITATED AND STABILIZED. THIS INCLUDES REMOVE STRAW BALE FLOW CHECK DAMS, SILT FENCES AND FILTER CLOTHS ON CATCH BASINS AND MANHOLE COVERS.
- INSPECT AND CLEAN CATCH BASIN SUMPS AND STORM SEWERS.

STORM SEWER STRUCTURE TABLE				
STRUCTURE No.	STRUCTURE DETAILS	ELEVATIONS (m)	NORTHING	EASTING
MHST-1	CONCRETE MANHOLE 1200mm OPSS 701.010	T/G = 100.58 INV NE = 97.81 INV NW = 97.75	5014866.96	3639919.18
RYCB-2	RYCB 375mm CITY OF OTTAWA S31	T/G = 99.96 INV SW = 97.98	5014871.28	364006.61
EX. MH-15A	EXISTING STRUCTURE	EX T/G = 100.26 EX INV SW = 97.33 NEW INV E = 97.34 NEW INV SE = 97.40	5014882.64	363991.18

TURNER FLEISCHER
Turner Fleischer Architects Inc.
67 Lesmill Road
Toronto, ON, M3B 2T8
T 416 425 2222
turnerfleischer.com

This drawing, as an instrument of service, is provided by and is the property of Turner Fleischer Architects Inc. The drawings are not to be copied, reproduced, or used for any purpose other than that intended by the architect. The architect shall not be responsible for any errors or omissions in the drawings, or for any consequences arising therefrom. The contractor shall be responsible for all applications and requirements of authorities having jurisdiction. The contractor working from drawings not specifically marked 'For Construction' shall assume full responsibility and bear costs for any corrections or damages resulting from his work.

The site plan prepared by Turner Fleischer is based on a legal survey showing the boundaries of the lands together with the current location of any existing buildings, structures or improvements prepared by JD BARNES LIMITED, dated 2020-12-22 as provided by CANADIAN TIRE.



PARSONS
1223 MICHAEL STREET, SUITE 100, OTTAWA, ONTARIO K1J 7T2
Tel: 613-738-4100 Fax: 613-739-7100

TOPOGRAPHIC INFORMATION & BENCHMARK
SURVEY COMPLETED BY ANNIS, O'SULLIVAN, VOLLEBEKK LTD. ON NOVEMBER 9TH 2022. ELEVATIONS SHOWN ARE GEODETIC AND ARE REFERRED TO THE CGVD28 GEODETIC DATUM, DERIVED FROM CONTROL MONUMENT NO. 019680071 HAVING AN ELEVATION OF 99.742m.

NO.	DATE	DESCRIPTION	BY
2	2023-10-26	RE-ISSUED FOR SITE PLAN APPLICATION	MT
1	2023-05-18	ISSUED FOR SITE PLAN APPLICATION	PC



PROJECT
2501 GREENBANK RD
CANADIAN TIRE STORE EXPANSION
BARRHAVEN, ONTARIO

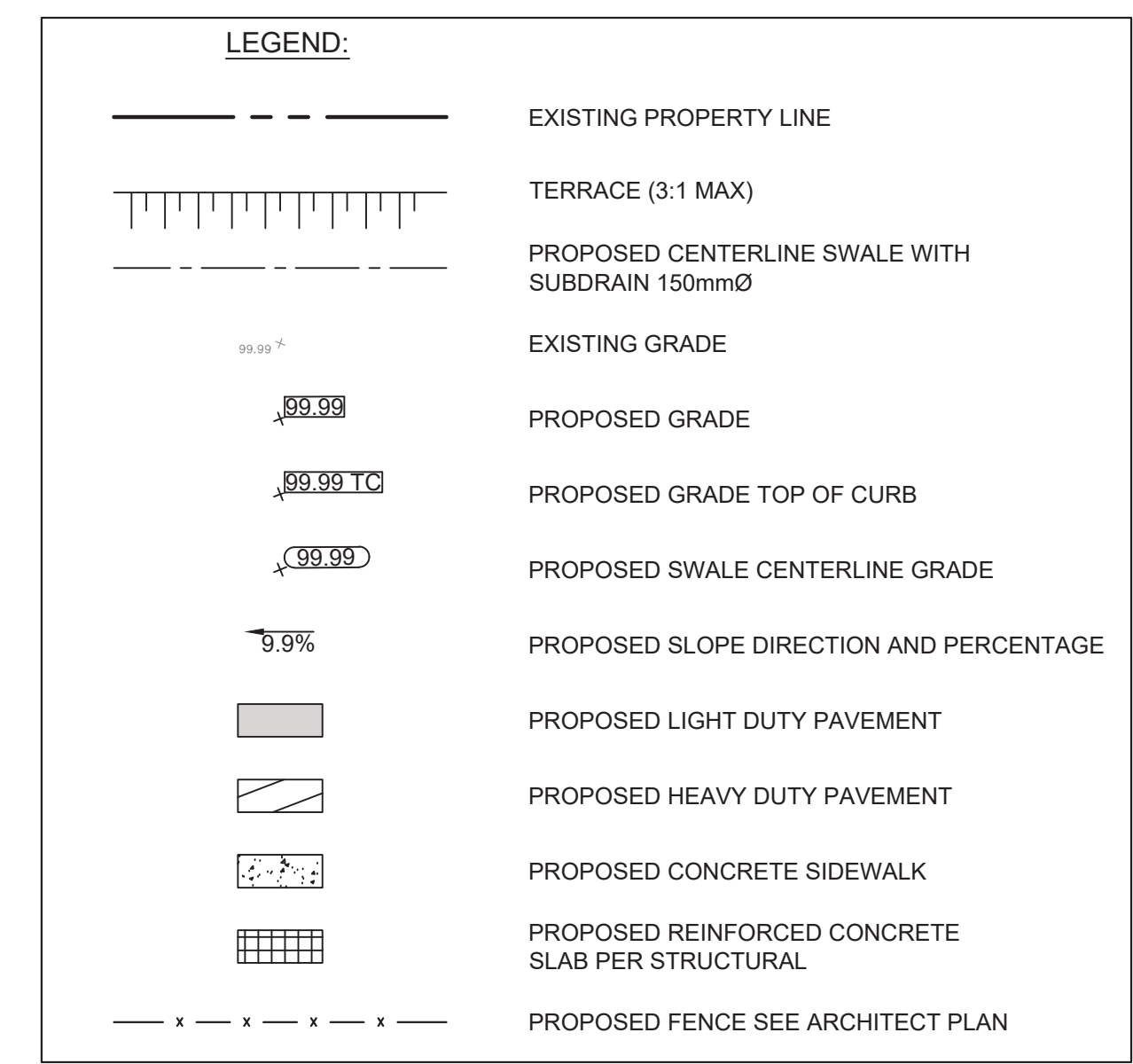
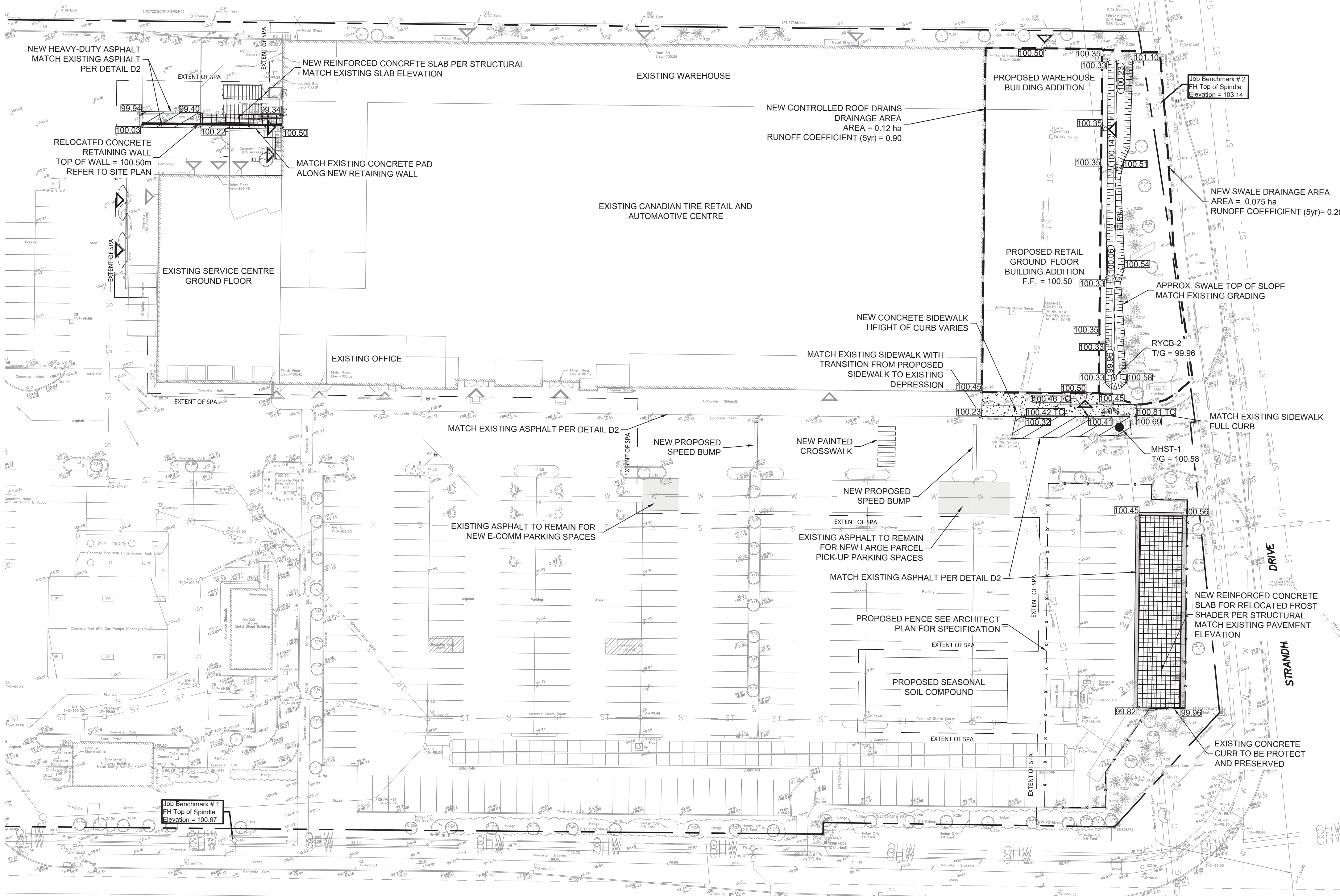
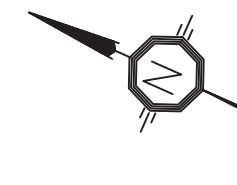
DRAWING
EROSION/SEDIMENT CONTROL PLAN

PROJECT NO: 478461
PROJECT DATE: 2022-09-23
DRAWN BY: BV
CHECKED BY: MT
SCALE: As indicated
As indicated

PROFESSIONAL ENGINEER
B. VILLENEUVE
100553987
2023-10-26
PROVINCE OF ONTARIO

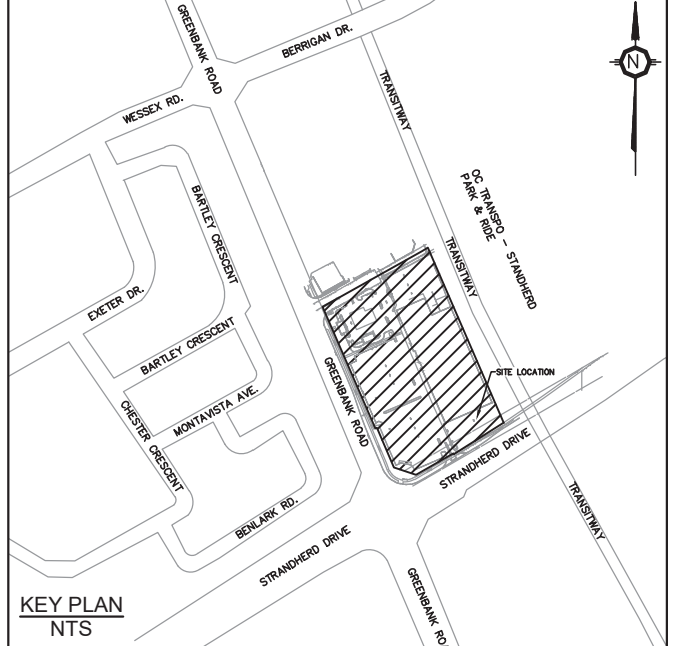
DRAWING NO: **C102** REV: _____

#18026 D07-12-24-004

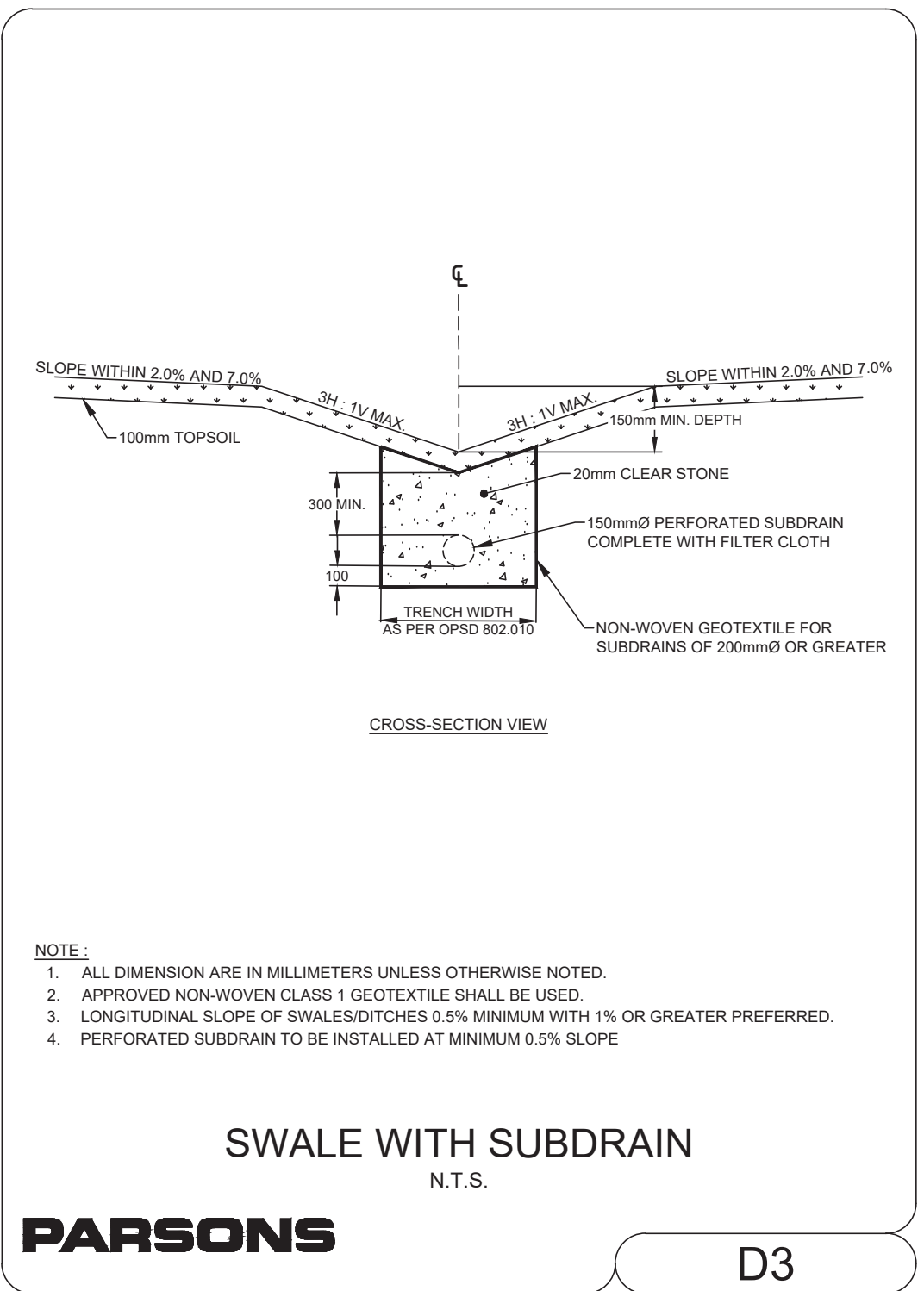
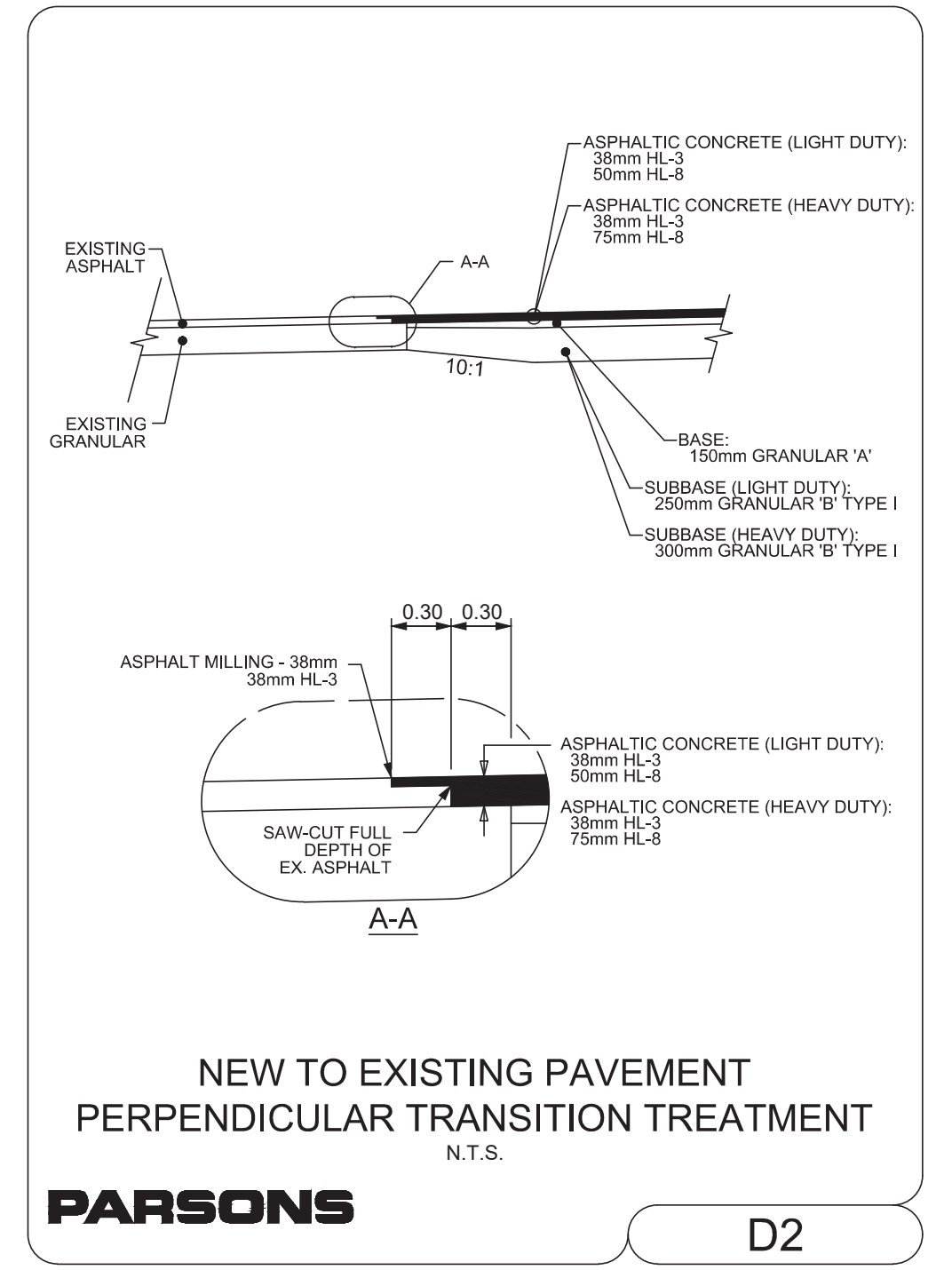


This drawing, as an instrument of service, is provided by and is the property of Turner Fleischer Architects Inc. The contractor shall verify and accept responsibility for all dimensions and conditions on site and shall notify Turner Fleischer Architects Inc. of any variations from the supplied information. This drawing is not to be used for any other project. The architect is not responsible for the accuracy of survey, structural, mechanical, electrical, etc. information shown on this drawing. Refer to the appropriate construction drawings before proceeding with the work. Contractor must conform to all applicable codes and requirements of authorities having jurisdiction. The contractor working from drawings not specifically marked 'For Construction' shall assume full responsibility and bear costs for any corrections or damages resulting from his work.

The site plan prepared by Turner Fleischer is based on a legal survey showing the boundaries of the lands together with the current location of any existing buildings, features or encroachments prepared by JD BARNES LIMITED, dated 2020-12-22 as provided by CANADIAN TIRE.



TOPOGRAPHIC INFORMATION & BENCHMARK
 SURVEY COMPLETED BY ANNIS, O'SULLIVAN, VOLLEBEK LTD. ON NOVEMBER 9TH, 2022. ELEVATIONS SHOWN ARE GEODETIC AND ARE REFERRED TO THE CGVD28 GEODETIC DATUM, DERIVED FROM CONTROL MONUMENT NO. 0196880071 HAVING AN ELEVATION OF 99.742m.



PAVEMENT STRUCTURES

MATERIAL	LIGHT DUTY	HEAVY DUTY	COMPACTION
Asphaltic Concrete Surface Course: HL3	38 mm	38 mm	≥ 97%
Asphaltic Concrete Binder Course: HL8	50 mm	75 mm	≥ 97%
Granular Base: OPSS 1010 Granular A (crushed limestone)	150 mm	150 mm	100%
Granular Sub-base: OPSS 1010 Granular B, Type I	250 mm	300 mm	100%

FROM: GEOTECHNICAL INVESTIGATION, PROPOSED BUILDING STORE #442, GREENBANK ROAD, NEPEAN, ONTARIO, BY JACQUES, WHITFORD LIMITED, DATED JANUARY 31, 2000
 *MINIMUM PAVEMENT COMPACTION BASED ON MARSHALL BULK DENSITY TEST
 **BASED ON STANDARD PROCTOR MAXIMUM DRY DENSITY (SPMDD)

APPROVED
 By Lily Xu at 10:20 am, Apr 02, 2024

Lily Xu
LILY XU, MCIP, RPP
 MANAGER, DEVELOPMENT REVIEW SOUTH
 PLANNING, INFRASTRUCTURE & ECONOMIC
 DEVELOPMENT DEPARTMENT, CITY OF OTTAWA

BARRHAVEN
 STORE No. 442

PROJECT
 2501 GREENBANK RD
 CANADIAN TIRE STORE EXPANSION
 BARRHAVEN, ONTARIO

DRAWING
 GRADING PLAN

PROJECT NO: 478461
PROJECT DATE: 2022-09-23
DRAWN BY: BV
CHECKED BY: MT
SCALE: As indicated

PROFESSIONAL ENGINEER
 B. VILLENEUVE
 100553987
 2023-10-26
 PROVINCE OF ONTARIO

DRAWING NO.: C103
REV.:

- NOTE:**
- ALL DIMENSIONS ARE IN MILLIMETERS UNLESS OTHERWISE NOTED.
 - APPROVED NON-WOVEN CLASS 1 GEOTEXTILE SHALL BE USED.
 - LONGITUDINAL SLOPE OF SWALES/DITCHES 0.5% MINIMUM WITH 1% OR GREATER PREFERRED.
 - PERFORATED SUBDRAIN TO BE INSTALLED AT MINIMUM 0.5% SLOPE

APPROVED
By Lily Xu at 10:21 am, Apr 02, 2024

Lily Xu

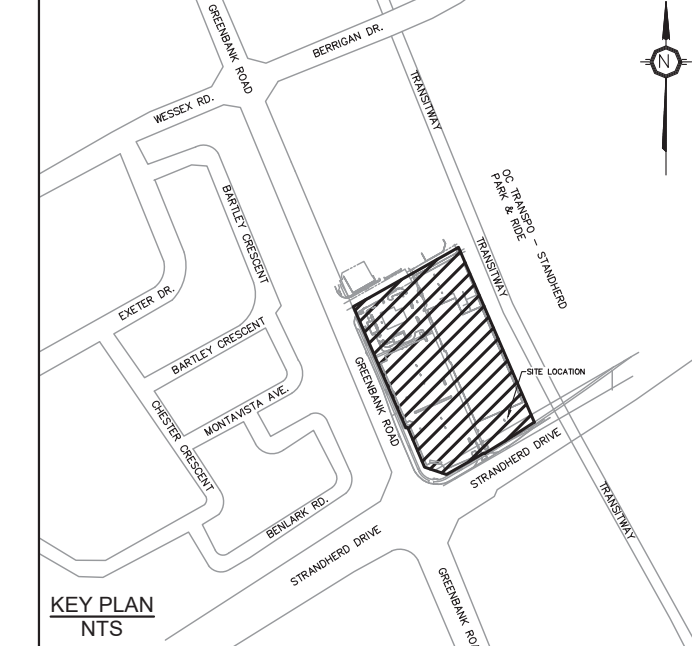
LILY XU, MCIP, RPP
MANAGER, DEVELOPMENT REVIEW SOUTH
PLANNING, INFRASTRUCTURE & ECONOMIC
DEVELOPMENT DEPARTMENT, CITY OF OTTAWA

TURNER FLEISCHER

Turner Fleischer Architects Inc.
67 Lesmill Road
Toronto, ON, M3B 2T8
T 416 425 2222
turnerfleischer.com

This drawing, as an instrument of service, is provided by and is the property of Turner Fleischer Architects Inc. The contractor must verify and accept responsibility for all dimensions and conditions on site and must notify Turner Fleischer Architects Inc. of any variations from the approved information. This drawing is to be used for the purpose of construction and is not responsible for the accuracy of survey, structural, mechanical, electrical, etc. information shown on this drawing. Refer to the appropriate consultant drawings before proceeding with the work. Construction must conform to all applicable codes and requirements of authorities having jurisdiction. The contractor working from drawings not specifically marked for construction must assume full responsibility and bear costs for any corrections or damages resulting from his work.

The site plan prepared by Turner Fleischer is reliant on a legal survey showing the boundaries of the levels together with the current location of any existing buildings, features or encroachments prepared by JD BARNES LIMITED, dated 2020-12-22 as provided by CANADIAN TIRE.



PARSONS
1223 MICHAEL STREET, SUITE 100, OTTAWA, ONTARIO K1J 7T2
Tel: 613-736-1150 Fax: 613-739-7105

TOPOGRAPHIC INFORMATION & BENCHMARK
SURVEY COMPLETED BY ANNIS, O'SULLIVAN, VOLLEBEKK LTD. ON NOVEMBER 9TH 2022. ELEVATIONS SHOWN ARE GEODETIC AND ARE REFERRED TO THE CGVD28 GEODETIC DATUM, DERIVED FROM CONTROL MONUMENT NO. 016980071 HAVING AN ELEVATION OF 99.742m.

SILT SACK DETAIL

PARSONS D1

NOTES:
1. Size and shape of the silt trap sack to fit the storm structure it will service. (rectangular or round).
2. The silt trap sack shall have a built-in high-flow relief system (overflow bypass).
3. The silt trap sack assembly must allow removal without spilling the collected material.
4. Empty silt trap sacks and dispose of sediment and debris before the sack is half full.
5. Ensure the silt trap sack assembly does not spill or fall into the storm structure. If sediment is spilled into the storm structure, remove the spilled material by suction hoses or other approved method.
6. Provide protection for catch basin hoods (Wattles, 2x4 lumber, and so forth).

TYPICAL SIDEWALK SECTION

SECTION AT PRIVATE ENTRANCE AND PEDESTRIAN RAMPS

NOTES:
1. ALL DIMENSIONS ARE IN MILLIMETRES UNLESS SHOWN OTHERWISE.
2. THE MAXIMUM SLOPE IS NOT TO EXCEED 2%.
3. FOR CURB RAMPS, SLOPE OF 2% TO 3% MAXIMUM IS ALLOWED.
4. EXPANSION AND DILATION JOINTS AS PER SCS.
5. DEPRESSION CURB HEIGHT - FOR PEDESTRIAN CURB RAMPS 5 TO 6 mm AND FOR PRIVATE ENTRANCES 8 TO 13 mm.

DATE: MAY 2001
REV: MAY 2021
DWG. NO.: SC2

STANDARD TRENCH REINSTATEMENT IN PAVED SURFACE

NOTES:
1. ALL DIMENSIONS ARE IN MILLIMETRES UNLESS SHOWN OTHERWISE.
2. THE MAXIMUM SLOPE IS NOT TO EXCEED 2%.
3. FOR CURB RAMPS, SLOPE OF 2% TO 3% MAXIMUM IS ALLOWED.
4. EXPANSION AND DILATION JOINTS AS PER SCS.
5. DEPRESSION CURB HEIGHT - FOR PEDESTRIAN CURB RAMPS 5 TO 6 mm AND FOR PRIVATE ENTRANCES 8 TO 13 mm.

DATE: MAY 2001
REV: MARCH 2023
DWG. NO.: R10

SINGLE TRENCH (SEWER & SEWER SERVICES)

CONDITION SEWER SERVICES

EARTH	150 Min.	150 Min.
ROCK	300 Min.	150 Min.

NOTES:
1. PIPE INSIDE DIAMETER (mm) CLEARANCE (mm)
400 CONC 450
OR LESS PVC 450
500 500
2. FINAL BACKFILL - APPROVED NATIVE MATERIAL OR SELECT SUBGRADE IN ACCORDANCE WITH F-2120.
3. ALL DIMENSIONS ARE IN MILLIMETRES UNLESS SHOWN OTHERWISE.
4. INITIAL BACKFILL MATERIAL
CONCRETE PIPE - GRANULAR 'A' GRANULAR 'B' OR SELECT SUBGRADE MATERIAL WITH 100% PASSING THE 37.5 mm SIEVE
PVC PIPE - GRANULAR 'A'
5. WHEN APPROVED BY THE CONTRACT ADMINISTRATOR, ROCK SOILS SHALL BE EXCAVATED TO CREATE A FOUNDATION THAT SHALL BE FILLED TO THE BOTTOM OF THE BEDDING WITH GRANULAR 'B'.

DATE: MAY 2001
REV: MARCH 2021
DWG. NO.: S6

STANDARD CIRCULAR FRAME FOR MAINTENANCE HOLES (MODIFIED OPSD-401.020)

NOTES:
1. MATERIAL - GREY IRON.
2. FOR MAINTENANCE HOLE COVER SEE DWS DSA, S34.1, S34.2.
3. OPSD-401-020 HOLES ARE ALSO ACCEPTED.
4. ALL DIMENSIONS ARE IN mm UNLESS OTHERWISE SHOWN.

DATE: MAY 2007
REV: MARCH 2019
DWG. NO.: S29

CATCH BASIN MAINTENANCE HOLE COVER (MODIFIED OPSD-401.020)

NOTES:
1. MATERIAL - GREY IRON.
2. FOR FRAME DETAIL SEE DETAIL DWG. NO. S25.
3. TOLERANCE +/- 0.5mm.
4. FOR CATCHBASIN MAINTENANCE HOLE APPLICATIONS ONLY.

DATE: MARCH 2009
REV: MARCH 2017
DWG. NO.: S28.1

CATCH BASIN - ELBOW FOR REAR YARD, DITCHED PIPE AND LANDSCAPING APPLICATIONS

PIPE DIAMETER (mm)	T
250mm	375mm
300mm	450mm
375mm	525mm
450mm	600mm
525mm	750mm
600mm	750mm

NOTES:
1. ALL DIMENSIONS ARE IN MILLIMETRES UNLESS OTHERWISE SHOWN.
2. FOR DITCHED PIPE APPLICATIONS, TOP OF CB SHALL BE MIN 50mm ABOVE BOTTOM OF THE DITCH/SWALE AND BE LOCATED 50mm FROM EDGE OF PAVEMENT.
3. WHEN NON-PERFORATED PIPE IS USED, MATCH THE T/HORIZONTAL OPENING DIMENSIONS TO THE PIPE DIAMETER AND CORRECT WITH MANHOLE RECOMMENDED CONNECTION SIZES.
4. SEE MS-22-18 FOR ALTERNATE APPROVED CASTING MANUFACTURERS.

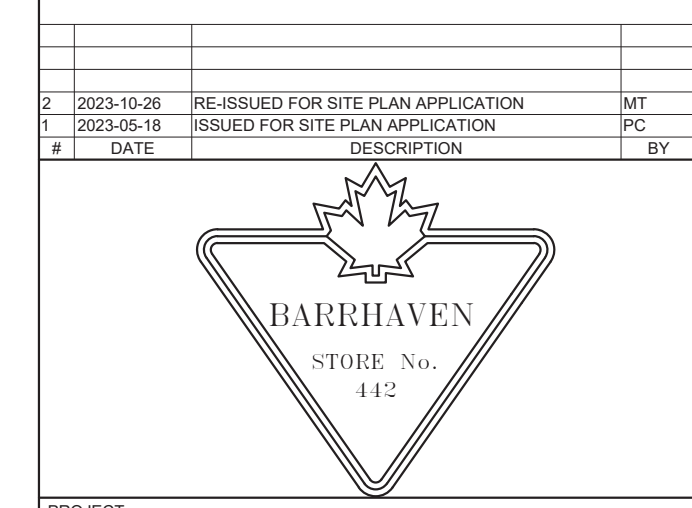
DATE: MARCH 2007
REV: MARCH 2015
DWG. NO.: S31

PRECAST CONCRETE MAINTENANCE HOLE 1200mm DIAMETER

NOTES:
1. The sump is measured from the lowest invert.
A Granular backfill shall be placed to a minimum thickness of 300mm all around the maintenance hole.
B Precast concrete components shall be according to OPSD 701.031, 701.031, or 701.032.
C Structure exceeding 5.0m in depth shall include safety platform according to OPSD 404.020.
D Pipe support according to OPSD 708.020.
E For benching and pipe opening details, see OPSD 701.021.
F For adjustment unit and frame installation, see OPSD 704.010.
G All dimensions are nominal.
H All dimensions are in millimetres unless otherwise shown.

DATE: Nov 2014
REV: 5
DWG. NO.: OPSD 701.010

#	DATE	DESCRIPTION	BY
2	2023-10-26	RE-ISSUED FOR SITE PLAN APPLICATION	MT
1	2023-05-18	ISSUED FOR SITE PLAN APPLICATION	PC



**2501 GREENBANK RD
CANADIAN TIRE STORE EXPANSION**
BARRHAVEN, ONTARIO

PROJECT
DRAWING

DETAILS

PROJECT NO. 478461
PROJECT DATE 2022-09-23
DRAWN BY BV
CHECKED BY MT
SCALE As indicated

PROFESSIONAL ENGINEER
B. VILLENEUVE
100553987
2023-10-26
PROVINCE OF ONTARIO

DRAWING NO. **C104**

#118206 007-12-23-0064