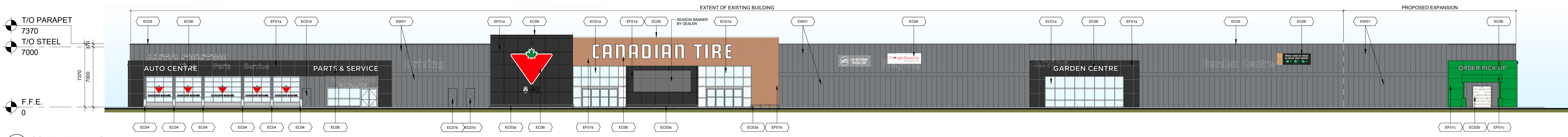


This drawing is an instrument of service, it is prepared and issued by the firm of Turner Fleischer Architects Inc. The project is the design and construction of the proposed expansion and renovation of the existing Canadian Tire Store #442. The project is located at 442 Barrhaven Road, Barrhaven, Ontario. The drawing is prepared in accordance with the Ontario Building Code and the City of Ottawa's Building By-Law. The drawing is prepared for the purpose of providing information to the client and is not intended to be used for any other purpose. The client is responsible for ensuring that the drawing is used in accordance with its intended purpose. The drawing is prepared in accordance with the Ontario Building Code and the City of Ottawa's Building By-Law. The drawing is prepared for the purpose of providing information to the client and is not intended to be used for any other purpose. The client is responsible for ensuring that the drawing is used in accordance with its intended purpose.

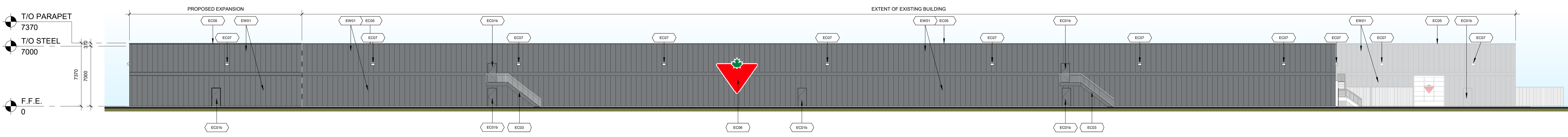
EXTERIOR FINISH SCHEDULE

EW01	CONCRETE FINISH
EF01A	ALUMINUM COMPOSITE PANELS COLOR: BLACK (AS APPROVED EQUIVALENT) MATERIAL: ALUMINUM COMPOSITE PANELS FINISH: POLYESTER POWDER COAT (AS APPROVED EQUIVALENT) CONTRACTOR TO PROVIDE COLOR CHARTS AND SAMPLES FOR APPROVAL PRIOR TO ORDERING OF MATERIALS
EF01B	ALUMINUM COMPOSITE PANELS COLOR: CUSTOM GREEN (AS APPROVED EQUIVALENT) MATERIAL: ALUMINUM COMPOSITE PANELS FINISH: POLYESTER POWDER COAT (AS APPROVED EQUIVALENT) CONTRACTOR TO PROVIDE COLOR CHARTS AND SAMPLES FOR APPROVAL PRIOR TO ORDERING OF MATERIALS
EF01C	ALUMINUM COMPOSITE PANELS COLOR: CUSTOM GREEN (AS APPROVED EQUIVALENT) MATERIAL: ALUMINUM COMPOSITE PANELS FINISH: POLYESTER POWDER COAT (AS APPROVED EQUIVALENT) CONTRACTOR TO PROVIDE COLOR CHARTS AND SAMPLES FOR APPROVAL PRIOR TO ORDERING OF MATERIALS
EC01A	GLASS DOORS & WINDOWS MATERIAL: ALUMINUM & GLASS SYSTEM COLOR: BLACK ANODIZED ALUMINUM GLAZING: CLEAR INSULATED GLASS (LOW E COATING) FINISH: CLEAR ANODIZED ALUMINUM CONTRACTOR TO PROVIDE COLOR CHARTS AND SAMPLES FOR APPROVAL PRIOR TO ORDERING OF MATERIALS
EC01B	GLASS DOORS & WINDOWS MATERIAL: ALUMINUM & GLASS SYSTEM COLOR: BLACK ANODIZED ALUMINUM GLAZING: CLEAR INSULATED GLASS (LOW E COATING) FINISH: CLEAR ANODIZED ALUMINUM CONTRACTOR TO PROVIDE COLOR CHARTS AND SAMPLES FOR APPROVAL PRIOR TO ORDERING OF MATERIALS
EC02A	INTERIOR DOOR FRAMES MATERIAL: ALUMINUM COLOR: FACTORY WHITE FINISH: FACTORY WHITE CONTRACTOR TO PROVIDE COLOR CHARTS AND SAMPLES FOR APPROVAL PRIOR TO ORDERING OF MATERIALS
EC02B	INTERIOR DOOR FRAMES MATERIAL: ALUMINUM COLOR: FACTORY WHITE FINISH: FACTORY WHITE CONTRACTOR TO PROVIDE COLOR CHARTS AND SAMPLES FOR APPROVAL PRIOR TO ORDERING OF MATERIALS
EC03	EXPOSED STEEL STUDS MATERIAL: GALVANNEAL STEEL COLOR: BLACK (AS APPROVED EQUIVALENT) FINISH: POLYESTER POWDER COAT (AS APPROVED EQUIVALENT) CONTRACTOR TO PROVIDE COLOR CHARTS AND SAMPLES FOR APPROVAL PRIOR TO ORDERING OF MATERIALS
EC04	STAINLESS STEEL CHECKER PLATE MATERIAL: STAINLESS STEEL COLOR: POLISHED (AS APPROVED EQUIVALENT) FINISH: POLISHED (AS APPROVED EQUIVALENT) CONTRACTOR TO PROVIDE COLOR CHARTS AND SAMPLES FOR APPROVAL PRIOR TO ORDERING OF MATERIALS
EC05	WALL PANELS MATERIAL: ALUMINUM & GLASS SYSTEM COLOR: BLACK (AS APPROVED EQUIVALENT) FINISH: POLYESTER POWDER COAT (AS APPROVED EQUIVALENT) CONTRACTOR TO PROVIDE COLOR CHARTS AND SAMPLES FOR APPROVAL PRIOR TO ORDERING OF MATERIALS
EC06	EXTERIOR SIGNAGE MATERIAL: ALUMINUM & GLASS SYSTEM COLOR: BLACK (AS APPROVED EQUIVALENT) FINISH: POLYESTER POWDER COAT (AS APPROVED EQUIVALENT) CONTRACTOR TO PROVIDE COLOR CHARTS AND SAMPLES FOR APPROVAL PRIOR TO ORDERING OF MATERIALS
EC07	LIGHT FIXTURES MATERIAL: ALUMINUM & GLASS SYSTEM COLOR: BLACK (AS APPROVED EQUIVALENT) FINISH: POLYESTER POWDER COAT (AS APPROVED EQUIVALENT) CONTRACTOR TO PROVIDE COLOR CHARTS AND SAMPLES FOR APPROVAL PRIOR TO ORDERING OF MATERIALS
EC08A	ROOFING MATERIAL: ALUMINUM & GLASS SYSTEM COLOR: BLACK (AS APPROVED EQUIVALENT) FINISH: POLYESTER POWDER COAT (AS APPROVED EQUIVALENT) CONTRACTOR TO PROVIDE COLOR CHARTS AND SAMPLES FOR APPROVAL PRIOR TO ORDERING OF MATERIALS
EC08B	ROOFING MATERIAL: ALUMINUM & GLASS SYSTEM COLOR: BLACK (AS APPROVED EQUIVALENT) FINISH: POLYESTER POWDER COAT (AS APPROVED EQUIVALENT) CONTRACTOR TO PROVIDE COLOR CHARTS AND SAMPLES FOR APPROVAL PRIOR TO ORDERING OF MATERIALS

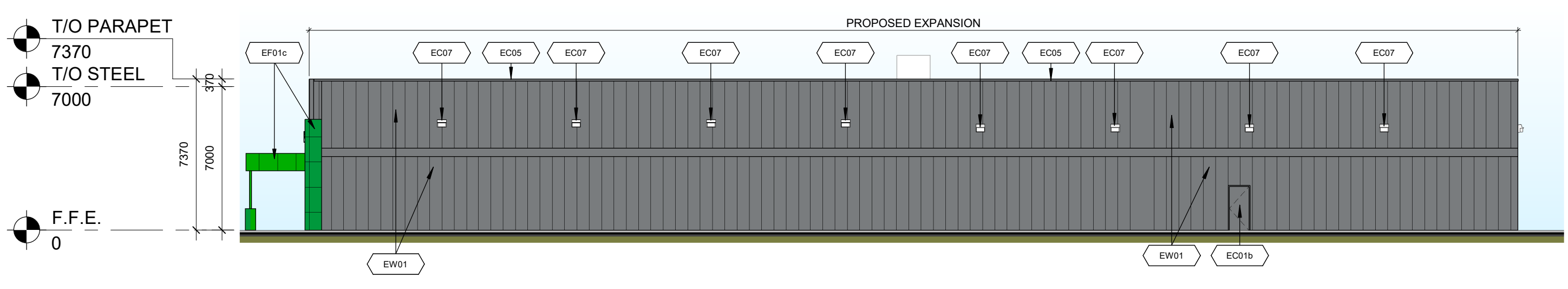
GENERAL NOTES:
1. FINISH SCHEDULE IS A REPRESENTATION OF THE COLOR & MATERIALS TO BE USED FOR THE PROPOSED EXPANSION AND RENOVATION OF THE EXISTING BUILDING.
2. COLOR & MATERIALS TO BE USED FOR THE PROPOSED EXPANSION AND RENOVATION OF THE EXISTING BUILDING ARE SUBJECT TO APPROVAL BY THE CITY OF OTTAWA.
3. CONTRACTOR TO PROVIDE COLOR CHARTS AND SAMPLES FOR APPROVAL PRIOR TO ORDERING OF MATERIALS.
4. CONTRACTOR TO PROVIDE COLOR CHARTS AND SAMPLES FOR APPROVAL PRIOR TO ORDERING OF MATERIALS.
5. CONTRACTOR TO PROVIDE COLOR CHARTS AND SAMPLES FOR APPROVAL PRIOR TO ORDERING OF MATERIALS.



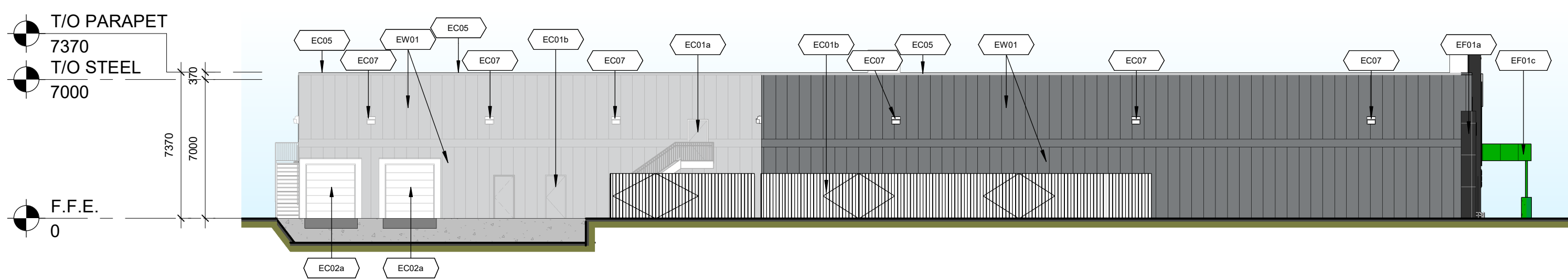
1 SOUTH ELEVATION
A2-9 / 1:200



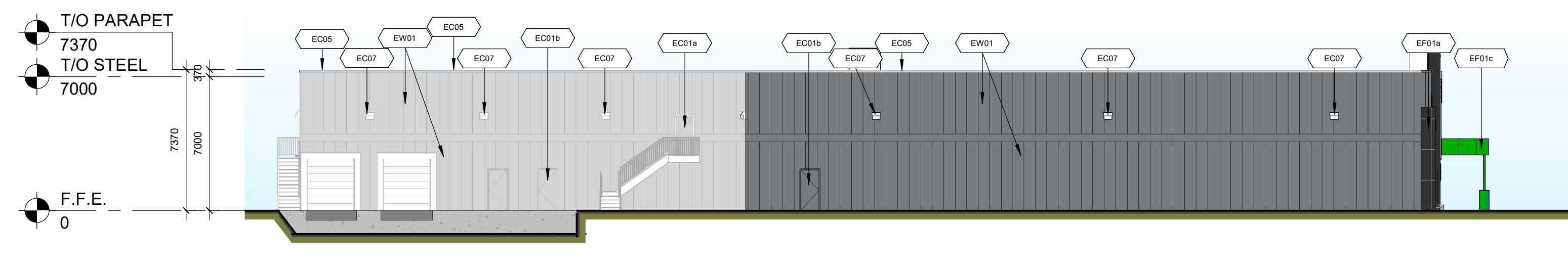
2 NORTH ELEVATION
A2-9 / 1:200



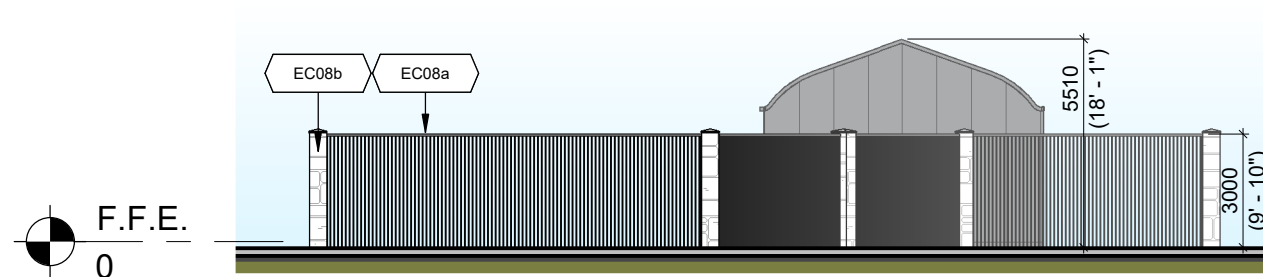
3 EAST ELEVATION
A2-9 / 1:200



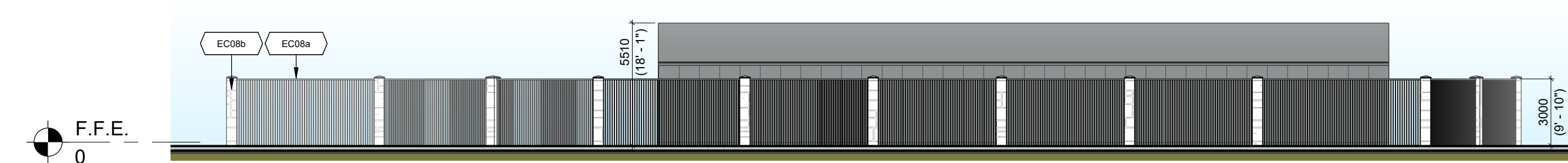
4 WEST ELEVATION
A2-9 / 1:200



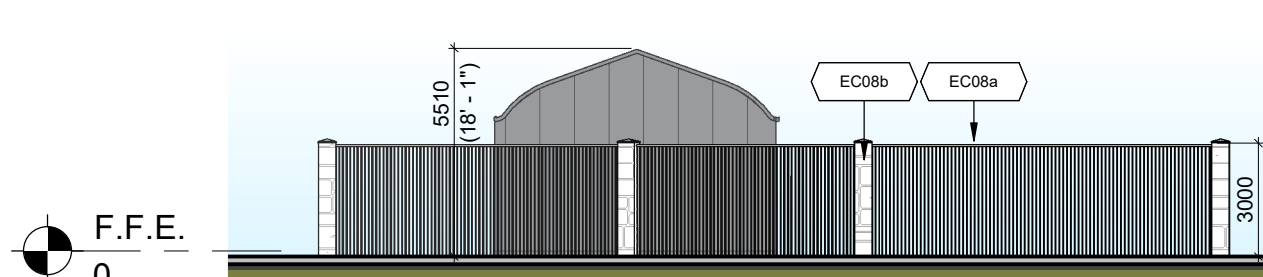
5 WEST ELEVATION - BEYOND
A2-9 / 1:200



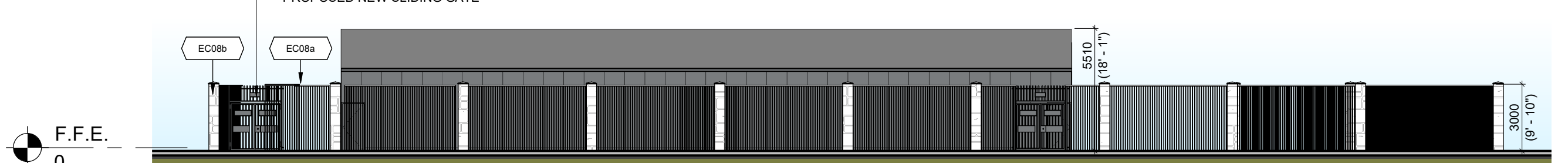
6 GARDEN CENTRE - SOUTH ELEVATION
A2-9 / 1:200



7 GARDEN CENTRE - EAST ELEVATION
A2-9 / 1:200



8 GARDEN CENTRE - NORTH ELEVATION
A2-9 / 1:200



9 GARDEN CENTRE - WEST ELEVATION
A2-9 / 1:200

APPROVED
By Lily Xu at 10:15 am, Apr 02, 2024

Lily Xu
LILY XU, MCIP, RPP
MANAGER, DEVELOPMENT REVIEW SOUTH
PLANNING, INFRASTRUCTURE & ECONOMIC
DEVELOPMENT DEPARTMENT, CITY OF OTTAWA

#	DATE	DESCRIPTION	BY
1	2023-10-05	ISSUED FOR COORDINATION	MMR
2	2023-09-15	ISSUED FOR COORDINATION	FR
3	2023-08-28	ISSUED FOR COORDINATION	FR
4	2023-08-02	ISSUED FOR COORDINATION	FR
5	2023-04-13	ISSUED FOR COORDINATION	FR
6	2023-04-05	ISSUED FOR COORDINATION	FR
7	2023-01-17	ISSUED FOR COORDINATION	FR



PROJECT
PROPOSED CANADIAN TIRE STORE#442 EXPANSION AND RENOVATION
BARRHAVEN, ON

DRAWING
EXTERIOR ELEVATIONS

PROJECT NO:	05-26450
PROJECT DATE:	2023-10-05
DRAWN BY:	FR
CHECKED BY:	RCH
SCALE:	As Indicated
DRAWING NO:	A2-9