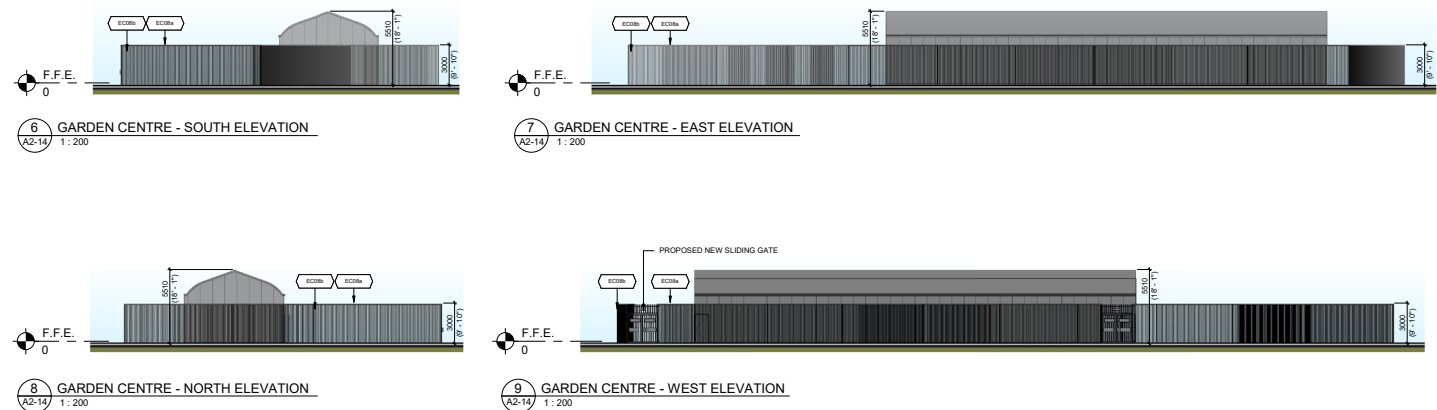


EXTERIOR FINISH SCHEDULE	
(EW01)	CONCRETE PANELS CONCRETE PRECAST COLOUR: STEEL WOOL
(EF01a)	ALUMINUM COMPOSITE PANEL MANUFACTURER: ALPOLIC (OR APPROVED EQUIVALENT) COLOUR: T08 BLACK 16mm DRY JOINT SYSTEM. ALL TRIMS & FLASHING TO MATCH CONTRACTOR TO PROVIDE COLOURFINISH SAMPLE FOR ARCHITECT/TOWNER APPROVAL PRIOR TO ORDERING OF MATERIALS
(EF01b)	INSULATED METAL WALL PANEL MANUFACTURER: ALPOLIC (OR APPROVED EQUIVALENT) COLOUR: STEEL WOOL 16mm DRY JOINT SYSTEM. ALL TRIMS & FLASHING TO MATCH CONTRACTOR TO PROVIDE COLOURFINISH SAMPLE FOR ARCHITECT/TOWNER APPROVAL PRIOR TO ORDERING OF MATERIALS
(EF01c)	ALUMINUM COMPOSITE PANEL MANUFACTURER: ALPOLIC (OR APPROVED EQUIVALENT) COLOUR: CUSTOM GREEN. ALPOLIC SHERWIN-WILLIAMS COL PARTONE 562 COATING: 755L180 - VAPOLON 17357 GREEN / CMR 17357 16mm DRY JOINT SYSTEM. ALL TRIMS & FLASHING TO MATCH CONTRACTOR TO PROVIDE COLOURFINISH SAMPLE FOR ARCHITECT/TOWNER APPROVAL PRIOR TO ORDERING OF MATERIALS
(EF01d)	ALUMINUM COMPOSITE PANEL MANUFACTURER: ALPOLIC (OR APPROVED EQUIVALENT) COLOUR: BLACK 16mm DRY JOINT SYSTEM. ALL TRIMS & FLASHING TO MATCH CONTRACTOR TO PROVIDE COLOURFINISH SAMPLE FOR ARCHITECT/TOWNER APPROVAL PRIOR TO ORDERING OF MATERIALS
(EC01a)	GLAZED DOORS & WINDOWS CURTAIN WALL & STOREFRONT FRAMING SYSTEM THERMALLY BROKEN ALUMINUM FRAMES COLOUR: BLACK ANODIZED GLAZING: CLEAR INSULATED VISION GLASS (W/ LOW-E COATING TINT: SOLARBAN 70XL GREEN GLAZING WILL NOT BE ACCEPTED (THERMALLY BROKEN AT DOORS & Sidelights)
(EC01b)	H.M. DOORS & FRAMES PREFABRICATED HOLLOW METAL DOORS AND FRAMES INSULATED DOORS ON THERMALLY BROKEN FRAMES COLOUR: STEEL WOOL
(EC01c)	H.M. DOORS & FRAMES PREFABRICATED HOLLOW METAL DOORS AND FRAMES INSULATED DOORS ON THERMALLY BROKEN FRAMES COLOUR: T08 BLACK
(EC02a)	OVERHEAD DOORS & FRAMES PREFABRICATED HOLLOW METAL DOOR AND FRAMES INSULATED DOORS ON THERMALLY BROKEN FRAMES FINISH: FACTORY WHITE COLOUR: PAINTED STEEL WOOL
(EC02b)	OVERHEAD DOORS & FRAMES PREFABRICATED HOLLOW METAL DOOR AND FRAMES INSULATED METAL DOOR ON ACRYLIC WINDOW FINISH: FACTORY WHITE COLOUR: PAINTED STEEL WOOL
(EC03)	EXPOSED STEEL STAIRS STEEL STAIRS, RAILINGS, STRUCTURE AND ALL ASSOCIATED COMPONENTS PROMINENT ZINC HIGH-PRIMER COLOUR: STEEL WOOL ASPHALTIC NOISE-PAINTED SAFETY YELLOW
(EC04)	STAINLESS STEEL CHECKER PLATE 1/8" THK 18-8/18% IN. STAINLESS STEEL CHECKER PLATE APPLIED TO STEEL COLUMN WITH COUNTERSINK GALVANIZED SCREWS WHICH FLUTES ALONG COLUMNS AND CONTINUE BASE TO 90° SLOPE OF ENTRANCE RAMP PROVIDE SEALANT ALONG PERIMETER WHERE TOP OF PLATE TERMINATES AT COLUMN
(EC05)	ACF FLASHING ACF FLASHING IS GAL METAL FLASHING • AT BLACK ACF PANELS: RETURN ACF AND FORM PARAPET • AT WOOD ACF PANELS: RETURN ACF AND FORM PARAPET • AT GREEN ACF PANELS: RETURN ACF AND FORM PARAPET • AT STEEL WOOL: ELECTROSTATICALLY PAINTED TO MATCH • AT SPRUCE BLACK: ELECTROSTATICALLY PAINTED TO MATCH REFER TO DETAILS FOR PROFILE
(EC06)	EXTERIOR SIGNAGE LED ILLUMINATED SIGNAGE PROVIDE 16mm EXTERIOR GRADE PLYWOOD BACKING S.C. TO PROVIDE ELECTRICAL CONNECTION (REFER TO ELEC. DWGS) COORDINATE EXACT DIMENSIONS OF BACKING AND POWER REQUIREMENTS WITH CANADIAN TIRE SIGNAGE SUPPLIER
(EC07)	LIGHT FIXTURE REFER TO ELEC. DWGS FOR LIGHT FIXTURE COLOUR: BLACK ON 16mm EXTERIOR GRADE PLYWOOD BACKING
(EC08a)	FENCING IRON EAGLE FENCE WITH IRON EAGLE GATE COLOUR: BLACK
(EC08b)	FENCING CULTURED STONE MANUFACTURER: CANADIAN STONE CONTRACTOR TO PROVIDE COLOURFINISH SAMPLE FOR ARCHITECT/TOWNER APPROVAL PRIOR TO ORDERING OF MATERIALS
<b>GENERAL NOTES</b> 1. COLOURED ELEVATIONS ARE ONLY A REPRESENTATION OF TRUE COLOURS 2. FOR COLOURS AND FINISHES REFER TO CANADIAN TIRE FINISH REFERENCE CHART 3. PAINT EXPOSED PIPES, DUCTS OR RELATED ELEMENTS TO MATCH THE COLOUR OF THE EXTERIOR WALLS FINISH ON WHICH THEY ARE INSTALLED 4. DO NOT PRIME FOUNDATION WALLS I.E.D. 5. PAINT ALL EXPOSED EDGES OF PRECAST CONCRETE PANELS TO MATCH WALL COLOUR	



This proposal constitutes Work. "Work" means all artwork, renderings, key plans, and other materials and designs prepared by Turner Fleischer solely for this project/site. All Work remains the exclusive property of Turner Fleischer and retain all rights and title to the Work. Work may not be copied, reproduced, or republished without our prior written consent. The Work is subject to change and is made available for your review for informational and consultation purposes only in relation to this project/site.



GREENBANK RD + STRANDHERD DR  
BARRHAVEN, ON.  
05.264

DWG #A2-14  
2025-04-09  
SCALE: N.T.S.

CANADIAN TIRE STORE #442  
EXTERIOR ELEVATIONS

TURNER  
FLEISCHER