

# 2760-2770 SHEFFIELD ROAD

## CIVIL DESIGN DRAWINGS

### 2760-2770 SHEFFIELD ROAD

#### CITY OF OTTAWA

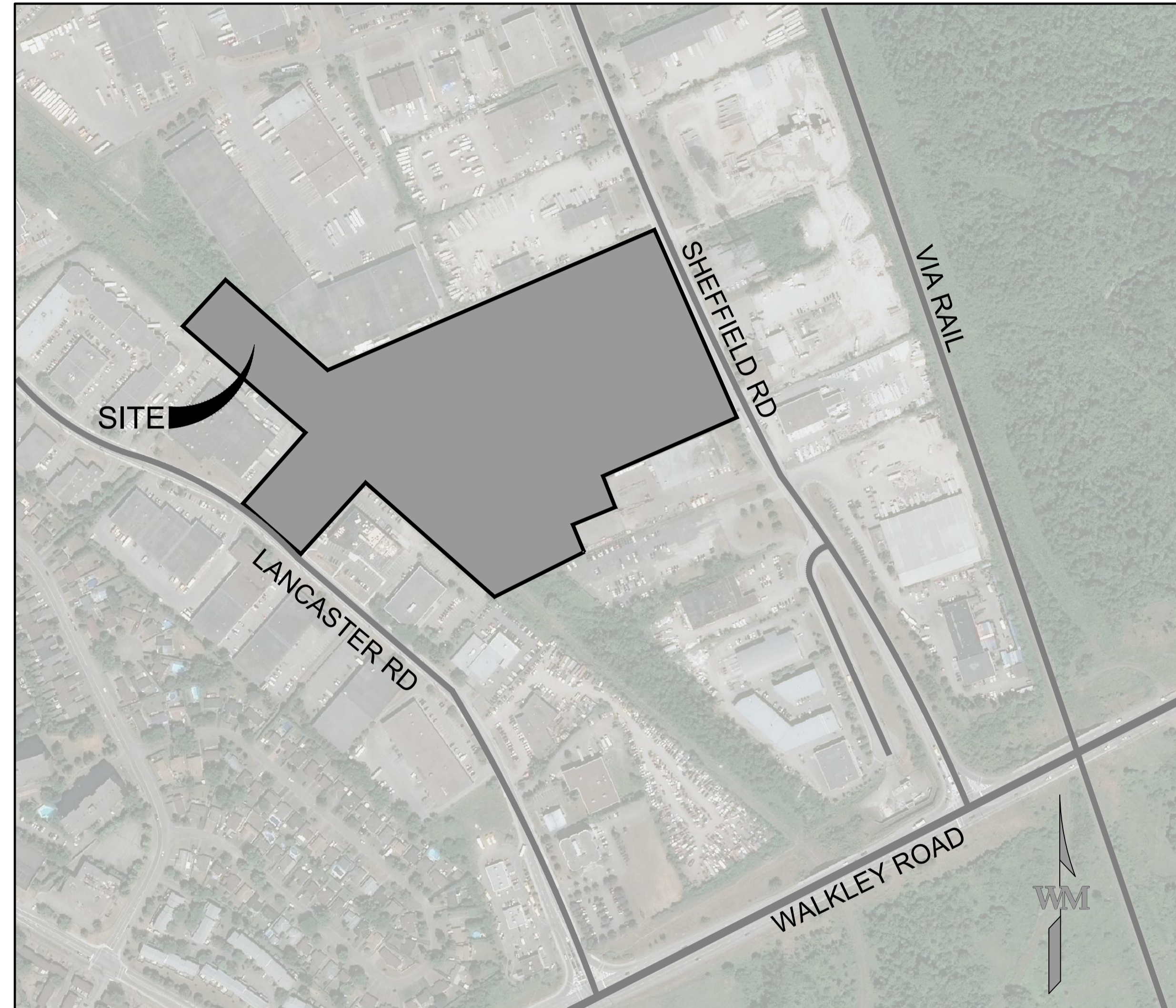
ISSUED FOR SITE PLAN APPROVAL 2023-10-20

**CIVIL ENGINEER:**

WARE MALCOMB  
180 BASS PRO MILLS DRIVE, UNIT 103  
VAUGHAN, ON, L4K 0G9

**ARCHITECT:**

WARE MALCOMB  
180 BASS PRO MILLS DRIVE, UNIT 103  
VAUGHAN, ON, L4K 0G9



**KEY PLAN**  
SCALE N.T.S.

**SURVEYOR**

PREPARED BY: ONTARIO LAND SURVEYOR  
DATE: NOVEMBER 18, 2022

**BENCHMARK**

ELEVATIONS SHOWN ARE GEODETIC AND ARE REFEREED TO THE CGVD28 GEODETIC DATUM.

**BASIS OF BEARINGS**

BEARINGS ARE GRID, DERIVED FROM CAN-NET 2016 REAL TIME NETWORK GPS OBSERVATIONS AND ARE REFERENCED TO SPECIFIED CONTROL POINTS 01919680105 AND 019198434761, MTM ZONE 9 (76°30' WEST LONGITUDE) NAD-83.

**SHEET INDEX**

C1.0	COVER SHEET
C1.1	NOTES
C2.0	PRE-DEVELOPMENT DRAINAGE PLAN
C3.0	POST DEVELOPMENT DRAINAGE PLAN
C4.0	GRADING PLAN
C5.0	SERVICING PLAN
C6.0	ESC & CONSTRUCTION MANAGEMENT PLAN
C7.0	DETAILS
C7.1	DETAILS

**WARE MALCOMB**  
LEADING DESIGN FOR COMMERCIAL REAL ESTATE  
180 bass pro mills drive  
unit 103  
vaughan ontario M4K 5W4  
p 905.760.1221  
waremalcomb.com



2760-2770 SHEFFIELD ROAD  
OTTAWA, ONTARIO  
COVER SHEET

NO.	DATE	REMARKS
1	2023-10-20	ISSUED FOR SITE PLAN APPROVAL

JOB NO.:	OTW21-0002
PA / PM:	NI
DRAWN BY:	SJ
DATE:	2023-10-20

SHEET  
**C1.0**  
Sheet 1 of 10

w:\b\m\23\2760-2770\2760-2770\_Sheffield\_Road\_Site\_Plan\_Approval\002\2760-2770\_Sheffield\_Road\_Site\_Plan\_Approval\_Notes.dwg 12/12/2022 2:01 PM ASRVASTAVA 1:10.8061



WARE MALCOMB assumes no responsibility for utility locations. The utilities shown on this drawing have been plotted from the best available information. It is, however, the contractors responsibility to field verify the location of all utilities prior to the commencement of any construction.

CITY FILE # D07-12-23-0065 PLAN # 19053

Table with columns for Item No., Description, and Remarks. Includes sections for GENERAL, EROSION AND SEDIMENT CONTROL PLAN, GRADING & DRAINAGE, and SITE SERVICES.

WARE MALCOMB LEADING DESIGN FOR COMMERCIAL REAL ESTATE. 180 bass pro mills drive, Unit 103, Vaughan Ontario M4K 5W4, p 905.760.1221, wmalcomb.com

Licensed Professional Engineer N.H. ITZKOVSKY 100175150, PROVINCE OF ONTARIO. FOR AND ON BEHALF OF WARE MALCOMB

2760-2770 SHEFFIELD ROAD OTTAWA, ONTARIO NOTES

Table with columns: NO., DATE, ISSUED FOR SITE PLAN APPROVAL, REMARKS.

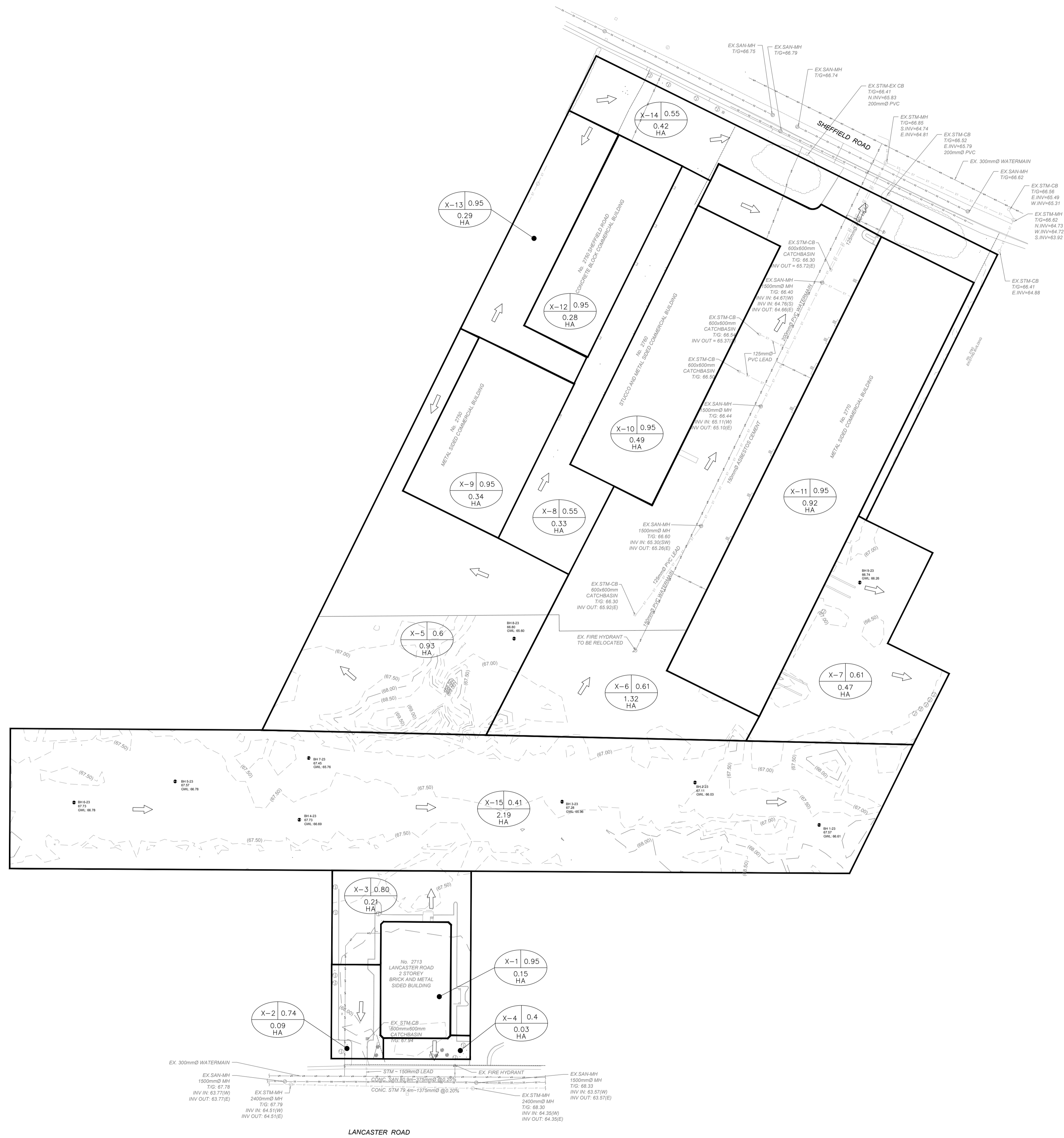
Table with columns: JOB NO., PA / PM, DRAWN BY, DATE.

SHEET C1.1 of 10. CITY FILE # D07-12-23-0065 PLAN # 19053

LEGEND:

- DRAINAGE AREA BOUNDARY
- |    |   |
|----|---|
| A  | C |
| B  |   |
| HA |   |

 A=DRAINAGE AREA ID  
 B=DRAINAGE AREA (HA)  
 C=RUNOFF COEFFICIENT
- ← OVERLAND FLOW ROUTE



**WARE MALCOMB**  
 LEADING DESIGN FOR COMMERCIAL REAL ESTATE

180 bass pro mills drive  
 unit 103  
 vaughan ontario M4K 5W4  
 p 905.760.1221  
 waresmalcomb.com

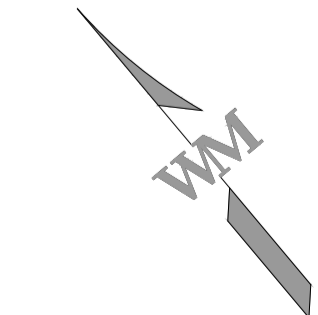


2760-2770 SHEFFIELD ROAD  
 OTTAWA, ONTARIO  
 PRE DEVELOPMENT DRAINAGE PLAN

NO.	DATE	REMARKS
1	2023-10-20	ISSUED FOR SITE PLAN APPROVAL

JOB NO.:	OTW21-0002
PA / PM:	NI
DRAWN BY:	SJ
DATE:	2023-10-20

SHEET  
**C2.0**  
 Sheet 3 of 10

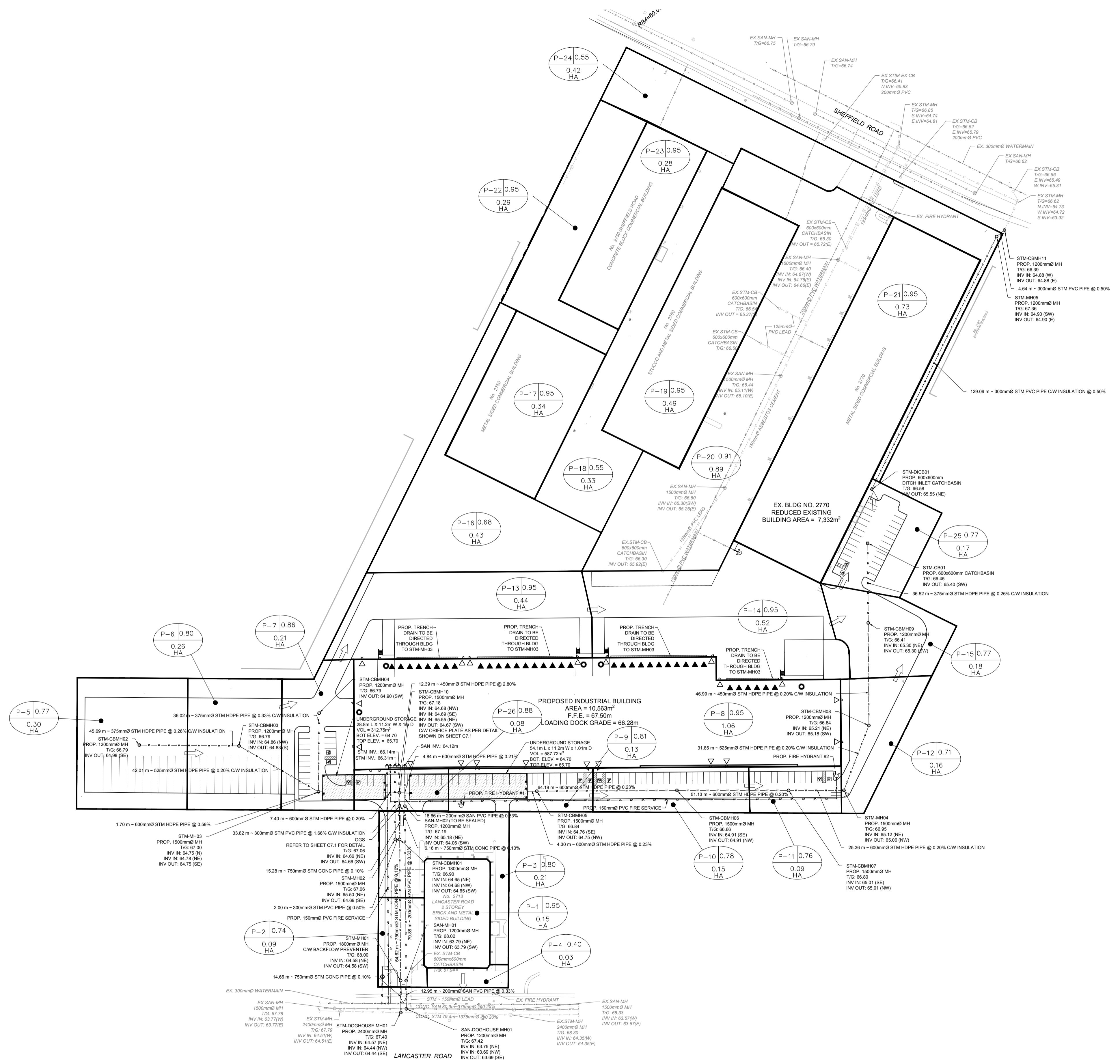


1:1000  
 0 10m 25m 50m

WARE MALCOMB assumes no responsibility for utility locations. The utilities shown on this drawing have been plotted from the best available information. It is, however, the contractor's responsibility to field verify the location of all utilities prior to the commencement of any construction.

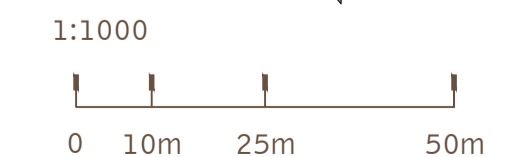
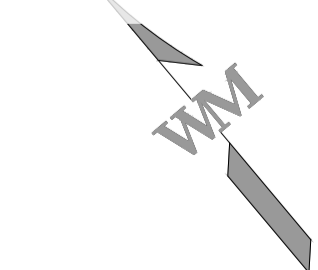
LEGEND:

- DRAINAGE AREA BOUNDARY
- A B C  
HA A=DRAINAGE AREA ID  
B=DRAINAGE AREA (HA)
- ← OVERLAND FLOW ROUTE



**APPROVED**  
By Lily Xu at 3:48 pm, Dec 15, 2023

*[Signature]*  
**LILY XU, MCIP, RPP**  
MANAGER, DEVELOPMENT REVIEW SOUTH  
PLANNING, INFRASTRUCTURE & ECONOMIC  
DEVELOPMENT DEPARTMENT, CITY OF OTTAWA



WARE MALCOMB assumes no responsibility for utility locations. The utilities shown on this drawing have been plotted from the best available information. It is, however, the contractors responsibility to field verify the location of all utilities prior to the commencement of any construction.

**WARE MALCOMB**  
LEADING DESIGN FOR COMMERCIAL REAL ESTATE

180 bass pro mills drive  
unit 103  
vaughan ontario M4K 5M4  
p 905.760.1221  
waremalcomb.com



FOR AND ON BEHALF OF WARE MALCOMB

**2760-2770 SHEFFIELD ROAD**  
**OTTAWA, ONTARIO**  
**POST DEVELOPMENT DRAINAGE PLAN**

NO.	DATE	REMARKS
1	2023-10-20	ISSUED FOR SITE PLAN APPROVAL

JOB NO.:	OTW21-0002
PA / PM:	NI
DRAWN BY:	SJ
DATE:	2023-10-20

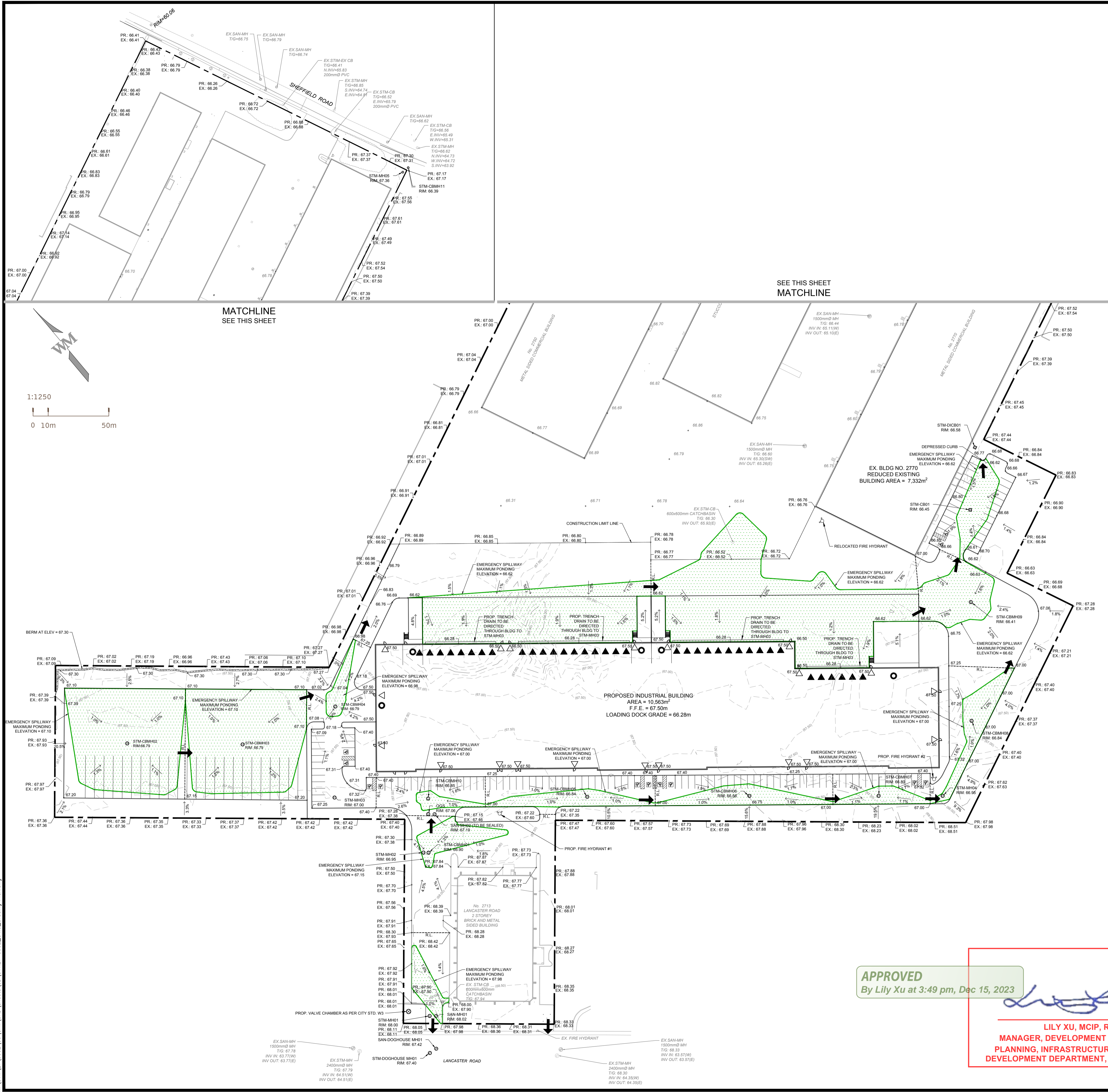
SHEET  
**C3.0**  
Sheet 4 of 10

LEGEND:

- PROPERTY LINE
- PROPOSED 0.25m CONTOUR
- EXISTING 0.25m CONTOUR
- PROPOSED SANITARY LINE
- EXISTING SANITARY LINE
- PROPOSED WATER LINE
- EXISTING WATER LINE
- PROPOSED FIRE LINE
- PROPOSED STORM LINE
- EXISTING STORM LINE
- PROPOSED SWALE
- PROPOSED FIRE HYDRANT
- EXISTING FIRE HYDRANT
- EXISTING STORM MANHOLE
- PROPOSED STORM MANHOLE
- PROPOSED PIPE PLUG
- VALVE BOX
- EXISTING SANITARY MANHOLE
- PROPOSED SANITARY MANHOLE
- EXISTING STORM CATCHBASIN
- PROPOSED STORM CATCHBASIN
- HIGH POINT
- LOW POINT
- MATCH EXISTING
- TOP OF CURB
- BOTTOM OF CURB
- TOP OF WALL
- BOTTOM OF WALL
- RIDGE LINE
- OVERLAND FLOW ROUTE

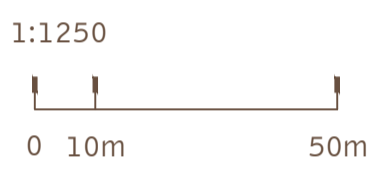
NOTE:

- ALL TOP OF CURB ELEVATIONS ARE TO BE 0.15m HIGHER THAN THE BOTTOM OF CURB ELEVATIONS, UNLESS OTHERWISE NOTED.
- MATCH EXISTING GRADES AT THE PROPERTY LINE.



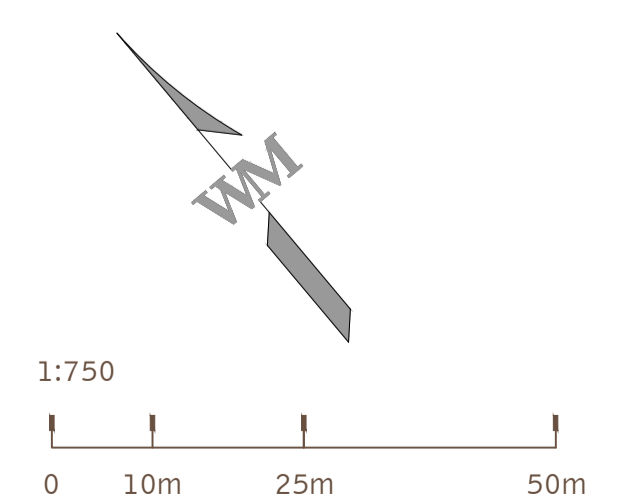
SEE THIS SHEET MATCHLINE

MATCHLINE SEE THIS SHEET



**APPROVED**  
By Lily Xu at 3:49 pm, Dec 15, 2023

*Lily Xu*  
**LILY XU, MCIP, RPP**  
MANAGER, DEVELOPMENT REVIEW SOUTH  
PLANNING, INFRASTRUCTURE & ECONOMIC  
DEVELOPMENT DEPARTMENT, CITY OF OTTAWA



**WARE MALCOMB**  
LEADING DESIGN FOR COMMERCIAL REAL ESTATE

180 base pro mills drive  
unit 103  
vaughan ontario M4K 5M4  
p 905.760.1221  
waremalcomb.com



FOR AND ON BEHALF OF WARE MALCOMB

**2760-2770 SHEFFIELD ROAD**  
**OTTAWA, ONTARIO**  
**GRADING PLAN**

NO.	DATE	ISSUED FOR	REMARKS
1	2023-10-20	ISSUED FOR SITE PLAN APPROVAL	

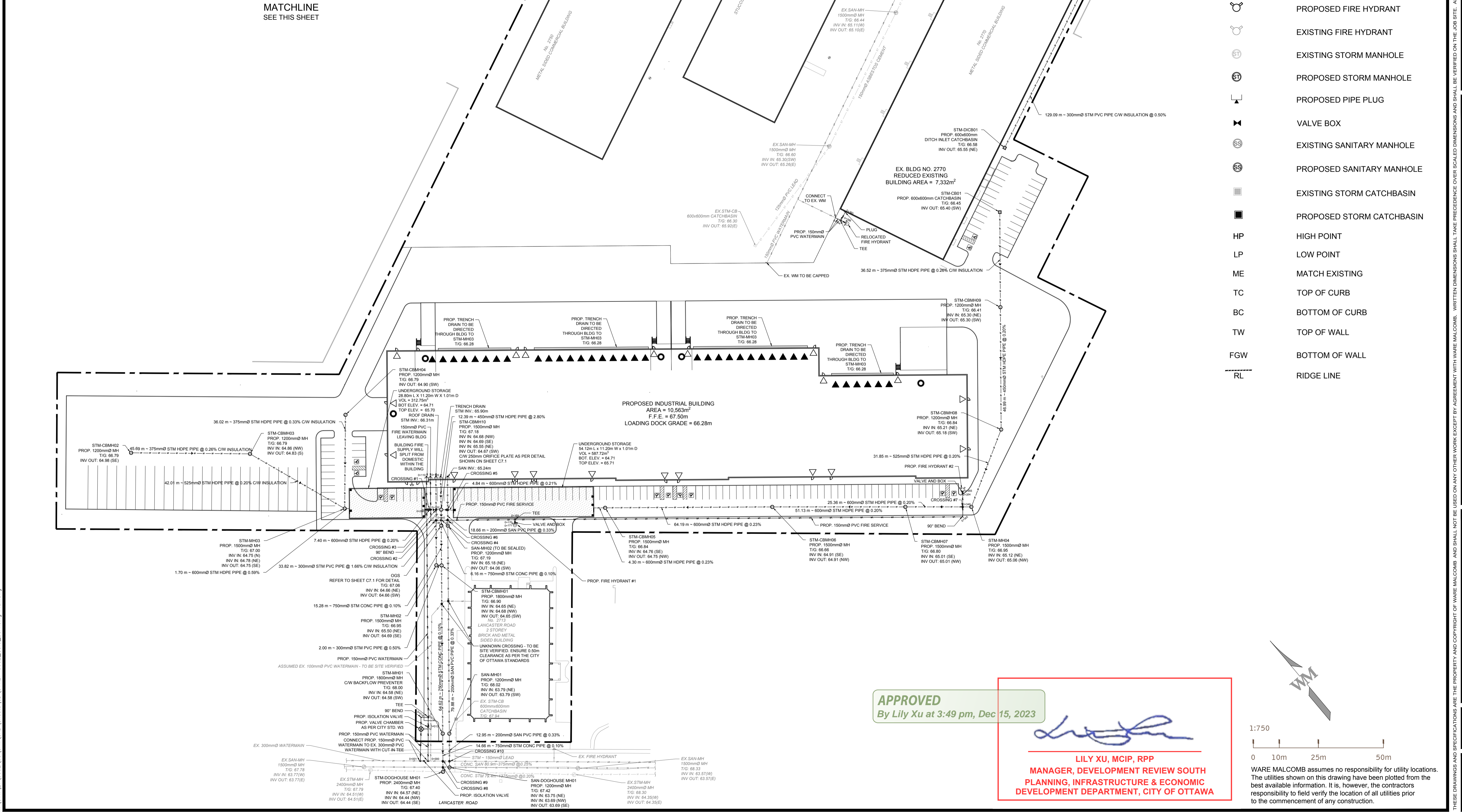
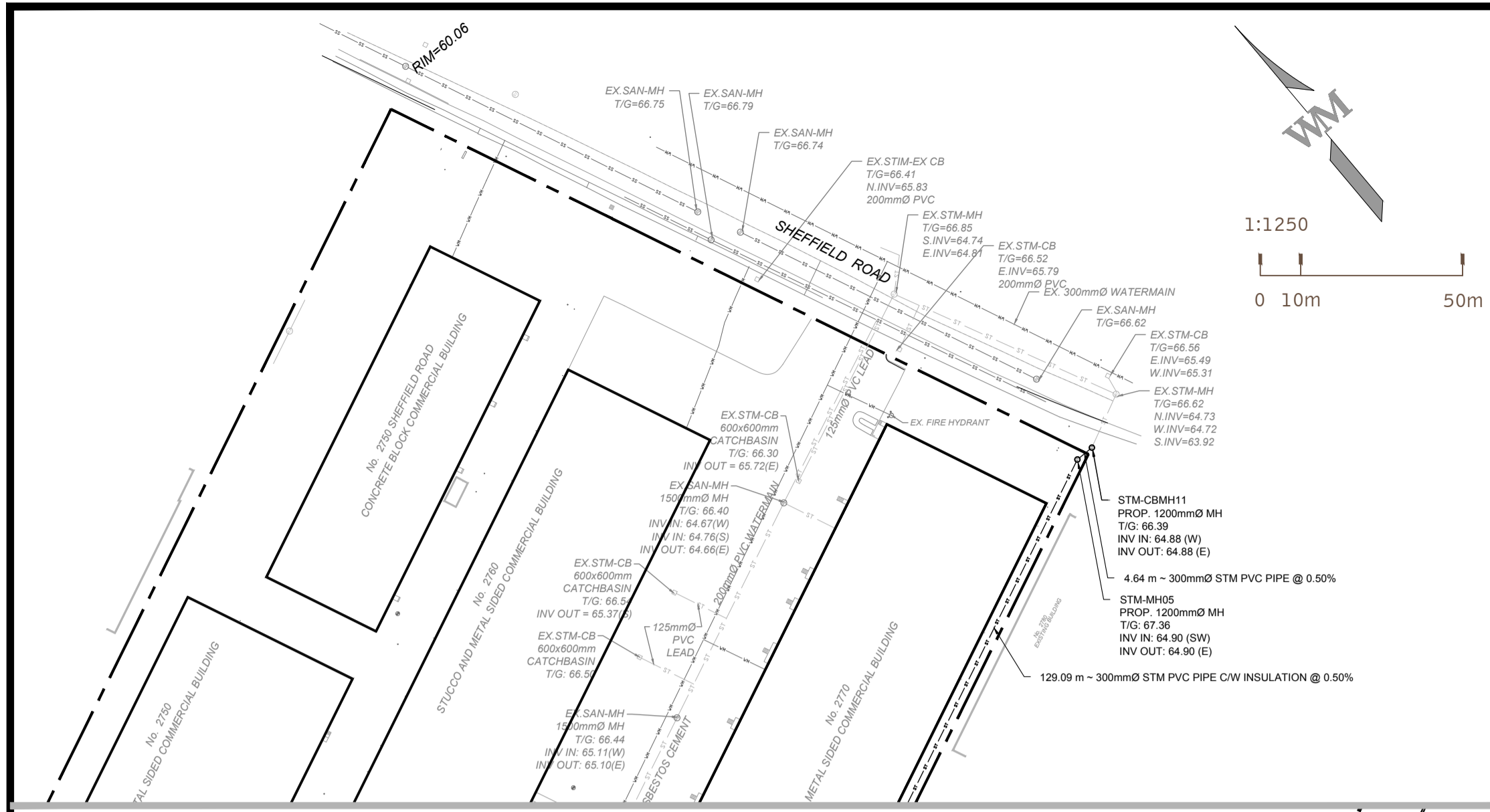
JOB NO.:	OTW21-0002
PA / PM:	NI
DRAWN BY:	SJ
DATE:	2023-10-20

SHEET  
**C4.0**  
Sheet 5 of 10

PROPOSED 150mmØ WATERMAIN TABLE			
STATION	SURFACE ELEVATION	TOP OF WATERMAIN ELEVATION	COMMENTS
0+000	67.97m	65.57m	TEE
0+001	67.91m	65.51m	TEE
0+012	68.12m	65.72m	VALVE CHAMBER W3
0+013	68.10m	65.10m	ISOLATION VALVE
0+014	68.05m	65.65m	90° BEND
0+018	68.15m	65.75m	TEE
0+098	67.13m	64.35m	CROSSING
0+110	67.50m	65.10m	BLDG CONNECTION
0+120	67.50m	65.10m	BLDG CONNECTION
0+132	67.13m	64.35m	CROSSING
0+136	67.14m	64.74m	90° BEND
0+138	67.08m	65.40m	CROSSING
0+140	67.08m	64.16m	CROSSING
0+143	67.08m	65.84m	CROSSING
0+169	67.16m	64.76m	TEE
0+170	67.15m	64.75m	VALVE AND BOX
0+171	67.13m	64.73m	HYDRANT
0+345	67.16m	64.76m	90° BEND
0+349	67.09m	64.54m	CROSSING
0+354	67.35m	64.95m	VALVE AND BOX
0+355	67.36m	64.96m	HYDRANT
0+360	66.77m	64.27m	PLUG
0+364	66.74m	64.24m	TEE
0+366	66.75m	64.25m	RELOCATED HYDRANT

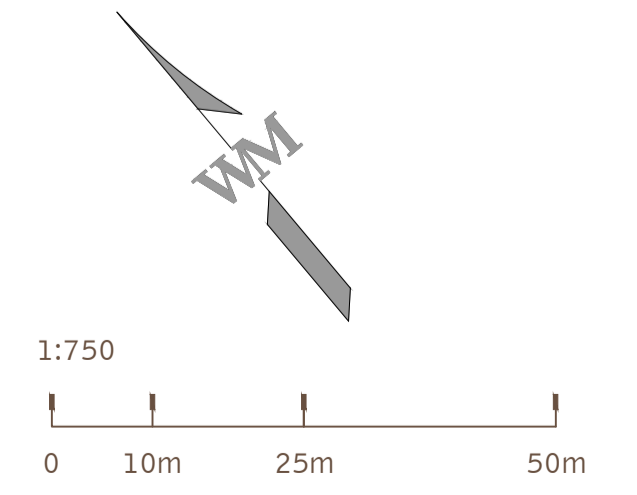
CROSSING TABLE			
CROSSING #	INVERT OF PIPE ABOVE	OBVERT OF PIPE BELOW	CLEARANCE
1	STM = 64.85m	WAT = 64.35m	0.50m
2	STM = 65.90m	WAT = 65.40m	0.50m
3	STM = 65.85m	STM = 65.35 m	0.50m
4	STM = 64.66m	WAT = 64.16m	0.50m
5	STM = 64.69m	SAN = 65.20m	0.50m
6	WAT = 65.69m	SAN = 65.19m	0.50m
7	STM = 65.04m	WAT = 64.54m	0.50m
8	STM = 64.57m	SAN = 64.07m	0.50m
9	EX. WAT = 65.71m	STM = 65.36m	0.35m
10	WAT = 65.71m	SAN = 63.90m	0.50m

- LEGEND:**
- PROPERTY LINE
  - - - 213.50 - - - PROPOSED 0.25m CONTOUR
  - - - (213.50) - - - EXISTING 0.25m CONTOUR
  - SS --- PROPOSED SANITARY LINE
  - SS --- EXISTING SANITARY LINE
  - VM --- PROPOSED WATER LINE
  - VM --- EXISTING WATER LINE
  - FW --- PROPOSED FIRE LINE
  - ST --- PROPOSED STORM LINE
  - ST --- EXISTING STORM LINE
  - PROPOSED SWALE
  - PROPOSED FIRE HYDRANT
  - EXISTING FIRE HYDRANT
  - PROPOSED STORM MANHOLE
  - EXISTING STORM MANHOLE
  - PROPOSED SANITARY MANHOLE
  - EXISTING SANITARY MANHOLE
  - PROPOSED STORM CATCHBASIN
  - EXISTING STORM CATCHBASIN
  - HP HIGH POINT
  - LP LOW POINT
  - ME MATCH EXISTING
  - TC TOP OF CURB
  - BC BOTTOM OF CURB
  - TW TOP OF WALL
  - FGW BOTTOM OF WALL
  - RL RIDGE LINE



**APPROVED**  
By Lily Xu at 3:49 pm, Dec 15, 2023

*Lily Xu*  
**LILY XU, MCIP, RPP**  
MANAGER, DEVELOPMENT REVIEW SOUTH  
PLANNING, INFRASTRUCTURE & ECONOMIC  
DEVELOPMENT DEPARTMENT, CITY OF OTTAWA



**WARE MALCOMB**  
LEADING DESIGN FOR COMMERCIAL REAL ESTATE

180 base pro mills drive  
unit 103  
vaughan ontario M4K 5W4  
p 905.760.1221  
waremalcomb.com



**2760-2770 SHEFFIELD ROAD**  
**OTTAWA, ONTARIO**  
**SERVICING PLAN**

NO.	DATE	REMARKS
1	2023-10-20	ISSUED FOR SITE PLAN APPROVAL

JOB NO.:	OTW21-0002
PA / FM:	NI
DRAWN BY:	SJ
DATE:	2023-10-20

SHEET  
**C5.0**  
Sheet 6 of 10

**NOTES FOR SEDIMENT & EROSION CONTROL**

- DISTURBED AREAS THAT HAVE FAILED TO HAVE STABLE GROUND COVER ESTABLISHED BY OCTOBER 15TH SHALL BE PROTECTED WITH A SILTATION CONTROL FENCE OR STRAW MULCH ETC. AND MAINTAINED BY THE CONTRACTOR UNTIL VEGETATION BECOMES ESTABLISHED IN THE SUBSEQUENT GROWING SEASON.
- ANY DEWATERING WASTE SHALL BE DISCHARGED TO A VEGETATED AREA AT LEAST 30 M FROM ANY WATERCOURSE AND FILTERED. FILTERING METHODS MUST BE APPROVED BY THE SITE ADMINISTRATOR.
- SILT FENCE SHALL BE PUT IN PLACE PRIOR TO AND MAINTAINED DURING ALL GRADING. SILT FENCE SHALL COMPLY WITH OPSD 219.110 FOR LIGHT DUTY AND/OR OPSD 219.130 FOR HEAVY DUTY, UNLESS NOTED OTHERWISE. SILT FENCE TO BE INSPECTED PRIOR TO COMMENCEMENT OF EARTH GRADING ACTIVITIES. SILT FENCE TO BE INSPECTED AND REPAIRED OR REPLACED IF DAMAGED AS DIRECTED BY THE SITE ADMINISTRATOR. SILT CONTROLS TO BE INSPECTED ON A REGULAR BASIS AND AFTER EVERY RAIN EVENT. INSTALLATION SHALL BE TO THE MANUFACTURER'S SUGGESTED SPECIFICATIONS.
- THE CONTRACTOR SHALL BE PREPARED FOR UNEXPECTED CONDITIONS AND ACCORDINGLY HAVE STOCKPILED MATERIALS ON SITE FOR NECESSARY REPAIRS AS A RESULT OF FAILURE OR INADEQUATE CONTROL MEASURES. ALL SEDIMENT AND EROSION CONTROL MEASURES SHALL BE INSPECTED AT LEAST ONCE A WEEK, AND AFTER EVERY RAINFALL EVENT.
- MUD MATS WHERE CONSTRUCTION TRAFFIC ENTERS OR LEAVES THE SITE SHALL BE USED. MUD MATS TO BE 200MM IN DEPTH, 8.0M WIDE BY 10.0M LONG, WHERE THE 10.0M OF LENGTH NEED TO BE 50MM TO 100MM OF CRUSHED STONE, OR MEET MUNICIPAL STANDARDS WHERE IDENTIFIED.
- CONTRACTOR SHALL OBTAIN A CURRENT COPY AND BECOME FAMILIAR WITH OPS 805, CONSTRUCTION SPECIFICATION FOR TEMPORARY EROSION AND SEDIMENT CONTROL MEASURES AS WELL AS ALL APPLICABLE MUNICIPAL STANDARDS.
- THE CONTRACTOR MAY CONSIDER ALTERNATIVE SEDIMENT AND EROSION CONTROL MEASURES. SUCH MEASURES SHOULD BE PRESENTED IN WRITING FOR APPROVAL OF THE SITE ADMINISTRATOR AND MUST BE APPROVED IN WRITING BY THE CONSERVATION AUTHORITY.
- THE TOPS OF ALL FILTER FABRIC MUST BE A MINIMUM OF 1.0 METRES ABOVE THE GROUND LEVEL AND ATTACHED TO THE FENCE WITH A CONTINUOUS STEEL WIRE. ALTERNATIVELY, THE FILTER FABRIC MUST BE FOLDED OVER THE TOP OF THE FENCE AND ATTACHED TO THE FENCE WITH WIRE LOOPED THROUGH THE FABRIC ON BOTH SIDES OF THE FENCE. FILTER FABRIC IS TO BE TERRAFIX 270R OR EQUIVALENT.
- ALL DISTURBED GROUND LEFT INACTIVE SHALL BE STABILIZED BY SEEDING, SODDING, MULCHING, OR COVERING OR OTHER EQUIVALENT CONTROL MEASURES. THIS PERIOD OF INACTIVITY SHALL BE AT THE DISCRETION OF THE MUNICIPAL DIRECTOR OF ENGINEERING BUT SHALL NOT EXCEED (30) DAYS OR SUCH LONGER PERIOD DEEMED ADVISABLE BY THE MUNICIPAL DIRECTOR OF ENGINEERING.
- CONTRACTOR SHALL INSTALL AND MAINTAIN CATCHBASIN SEDIMENT BARRIERS THROUGHOUT THE SITE DURING ALL CONSTRUCTION ACTIVITIES IN ORDER TO MITIGATE SEDIMENT ENTERING THE STORM STORM SEWERS.
- NO FUEL TO BE STORED ON SITE. IN CASE OF A SPILL PLEASE CONTACT: MOECO SPILLS ACTION CENTER 1-800-268-8060.
- SEDIMENT CONTROLS ARE TO REMAIN IN PLACE UNTIL WRITTEN DIRECTION IS RECEIVED FROM THE ENGINEER REGARDING THEIR REMOVAL.
- EROSION AND SEDIMENT CONTROLS WILL BE INSPECTED ON AS PER MUNICIPAL REQUIREMENTS OR AFTER SIGNIFICANT RAINFALL EVENTS.

**SEQUENCE OF CONSTRUCTION**

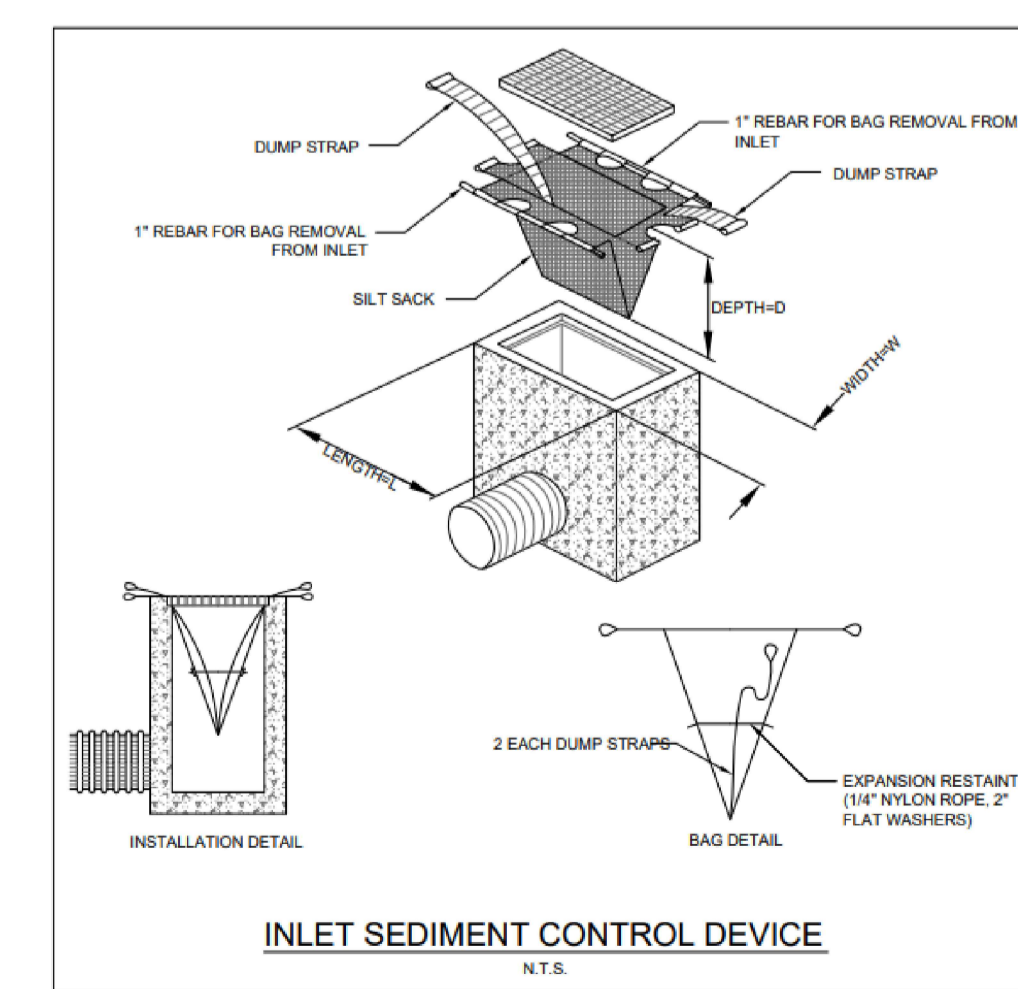
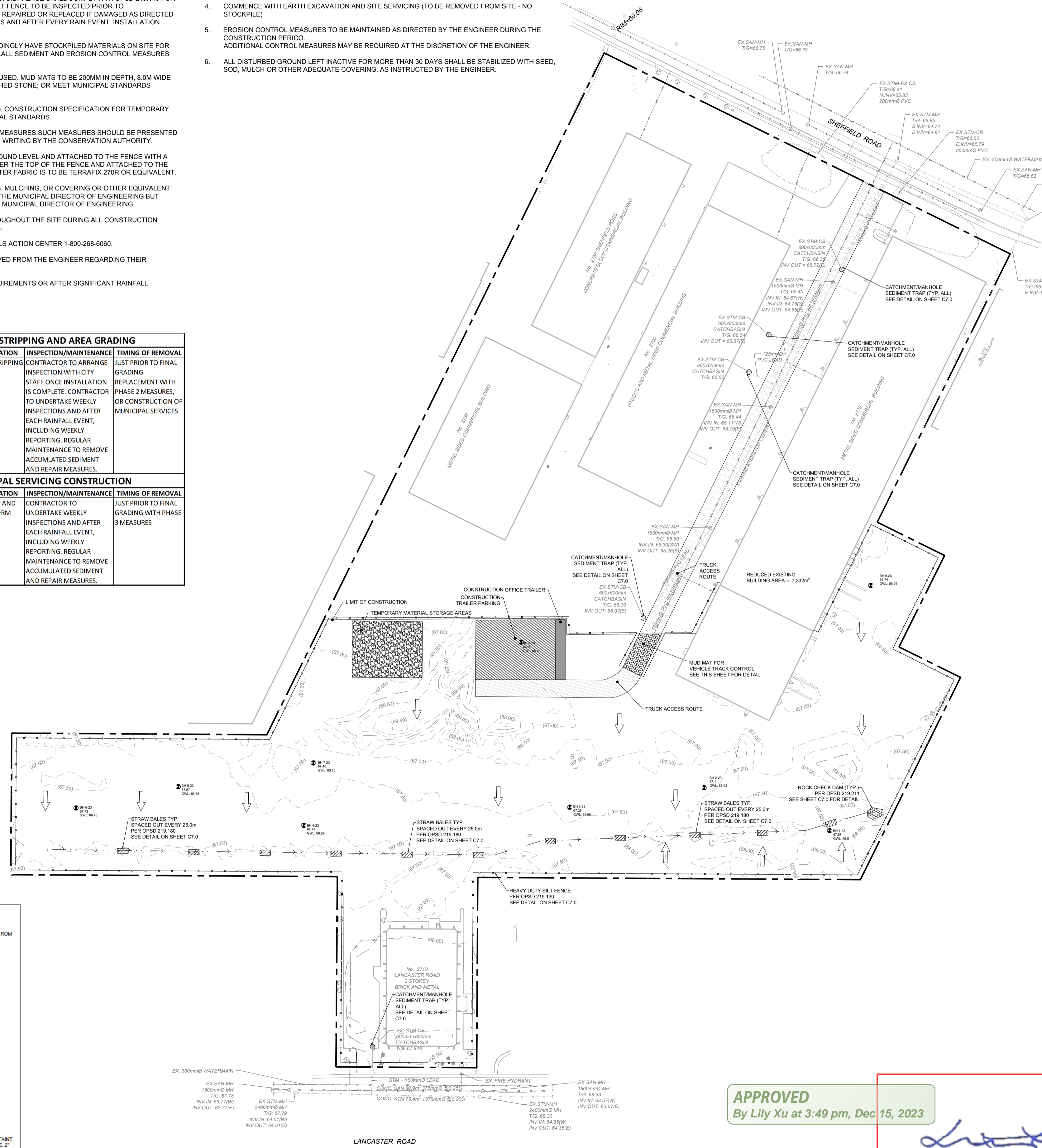
- ENGINEER TO BE NOTIFIED PRIOR TO INITIATION OF ANY ON SITE WORKS.
- SILT FENCE AND CONSTRUCTION ACCESS MATS TO BE INSTALLED PRIOR TO THE COMMENCEMENT OF ANY WORKS ON SITE.
- VEGETATION REMOVAL MAY COMMENCE AFTER ALL SILT FENCE IS INSTALLED AND APPROVED BY THE ENGINEER.
- COMMENCE WITH EARTH EXCAVATION AND SITE SERVICING (TO BE REMOVED FROM SITE - NO STOCKPILE)
- EROSION CONTROL MEASURES TO BE MAINTAINED AS DIRECTED BY THE ENGINEER DURING THE CONSTRUCTION PERIOD. ADDITIONAL CONTROL MEASURES MAY BE REQUIRED AT THE DISCRETION OF THE ENGINEER.
- ALL DISTURBED GROUND LEFT INACTIVE FOR MORE THAN 30 DAYS SHALL BE STABILIZED WITH SEED, SOD, MULCH OR OTHER ADEQUATE COVERING, AS INSTRUCTED BY THE ENGINEER.

**LEGEND:**

- SILT FENCE
- EXISTING CONTOUR
- ROCK CHECK DAM
- STRAW BALE
- TEMPORARY SWALE
- OVERLAND FLOW ROUTE
- BOREHOLE

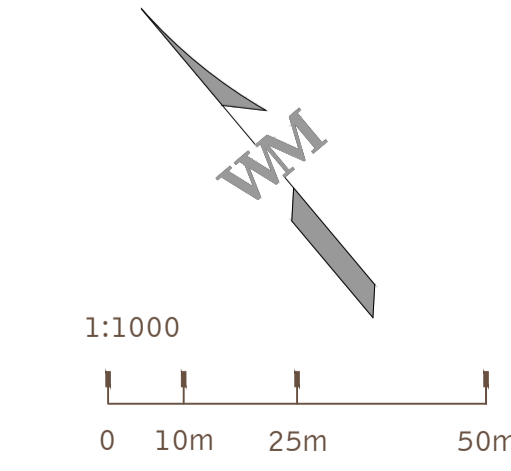
SITE AREA	84,454 sq.m
AREA OF ALTERATION	42,064 sq.m
EXISTING LAND USE	UNDEVELOPED
ADJOINING PROPERTY LAND USE	INDUSTRIAL
SOIL TYPE	SILTY CLAY

STAGE 1 - TOPSOIL STRIPPING AND AREA GRADING			
ESC MEASURE	TIMING OF INSTALLATION	INSPECTION/MAINTENANCE	TIMING OF REMOVAL
SILT FENCE	PRIOR TO TOPSOIL STRIPPING	CONTRACTOR TO ARRANGE INSPECTION WITH CITY STAFF ONCE INSTALLATION IS COMPLETE. CONTRACTOR TO UNDERTAKE WEEKLY INSPECTIONS AND AFTER EACH RAINFALL EVENT, INCLUDING WEEKLY REPORTING. REGULAR MAINTENANCE TO REMOVE ACCUMULATED SEDIMENT AND REPAIR MEASURES.	JUST PRIOR TO FINAL GRADING
MUD MAT			REPLACEMENT WITH PHASE 2 MEASURES, OR CONSTRUCTION OF MUNICIPAL SERVICES
TOPSOIL STOCKPILE			
STAGE 2 - MUNICIPAL SERVICING CONSTRUCTION			
ESC MEASURE	TIMING OF INSTALLATION	INSPECTION/MAINTENANCE	TIMING OF REMOVAL
RESTORATION HYDROSEEDING	AFTER AREA GRADING AND INSTALLATION OF STORM DRAINAGE SYSTEM IS COMPLETE.	CONTRACTOR TO UNDERTAKE WEEKLY INSPECTIONS AND AFTER EACH RAINFALL EVENT, INCLUDING WEEKLY REPORTING. REGULAR MAINTENANCE TO REMOVE ACCUMULATED SEDIMENT AND REPAIR MEASURES.	JUST PRIOR TO FINAL GRADING WITH PHASE 3 MEASURES
SEDIMENT TRAPS			
CONNECTIONS TO STORM SEWER			



**APPROVED**  
By Lily Xu at 3:49 pm, Dec 15, 2023

*[Signature]*  
**LILY XU, MCIP, RPP**  
MANAGER, DEVELOPMENT REVIEW SOUTH  
PLANNING, INFRASTRUCTURE & ECONOMIC  
DEVELOPMENT DEPARTMENT, CITY OF OTTAWA



THESE DRAWINGS AND SPECIFICATIONS ARE THE PROPERTY AND COPYRIGHT OF WARE MALCOMB AND SHALL NOT BE USED ON ANY OTHER WORK EXCEPT BY AGREEMENT WITH WARE MALCOMB. WRITTEN DIMENSIONS SHALL TAKE PRECEDENCE OVER SCALED DIMENSIONS AND SHALL BE VERIFIED ON THE JOB SITE. ANY DISCREPANCY SHALL BE BROUGHT TO THE NOTICE OF WARE MALCOMB PRIOR TO THE COMMENCEMENT OF ANY WORK.

**WARE MALCOMB**  
LEADING DESIGN FOR COMMERCIAL REAL ESTATE

180 bass pro mills drive  
unit 103  
vaughan ontario h4k 5w4  
p 905.760.1221  
waremalcomb.com

**LICENSED PROFESSIONAL ENGINEER**  
N.H. ITZKOVSKY  
100175150  
PROVINCE OF ONTARIO

FOR AND ON BEHALF  
OF WARE MALCOMB

**2760-2770 SHEFFIELD ROAD**  
**OTTAWA, ONTARIO**  
**ESC & CONSTRUCTION MANAGEMENT PLAN**

NO.	DATE	REMARKS
1	2023-10-20	ISSUED FOR SITE PLAN APPROVAL

JOB NO.: OTW21-0002  
PA / PM: NI  
DRAWN BY: SJ  
DATE: 2023-10-20

SHEET  
**C6.0**  
Sheet 7 of 10

CITY FILE # D07-12-23-0065 PLAN # 19053







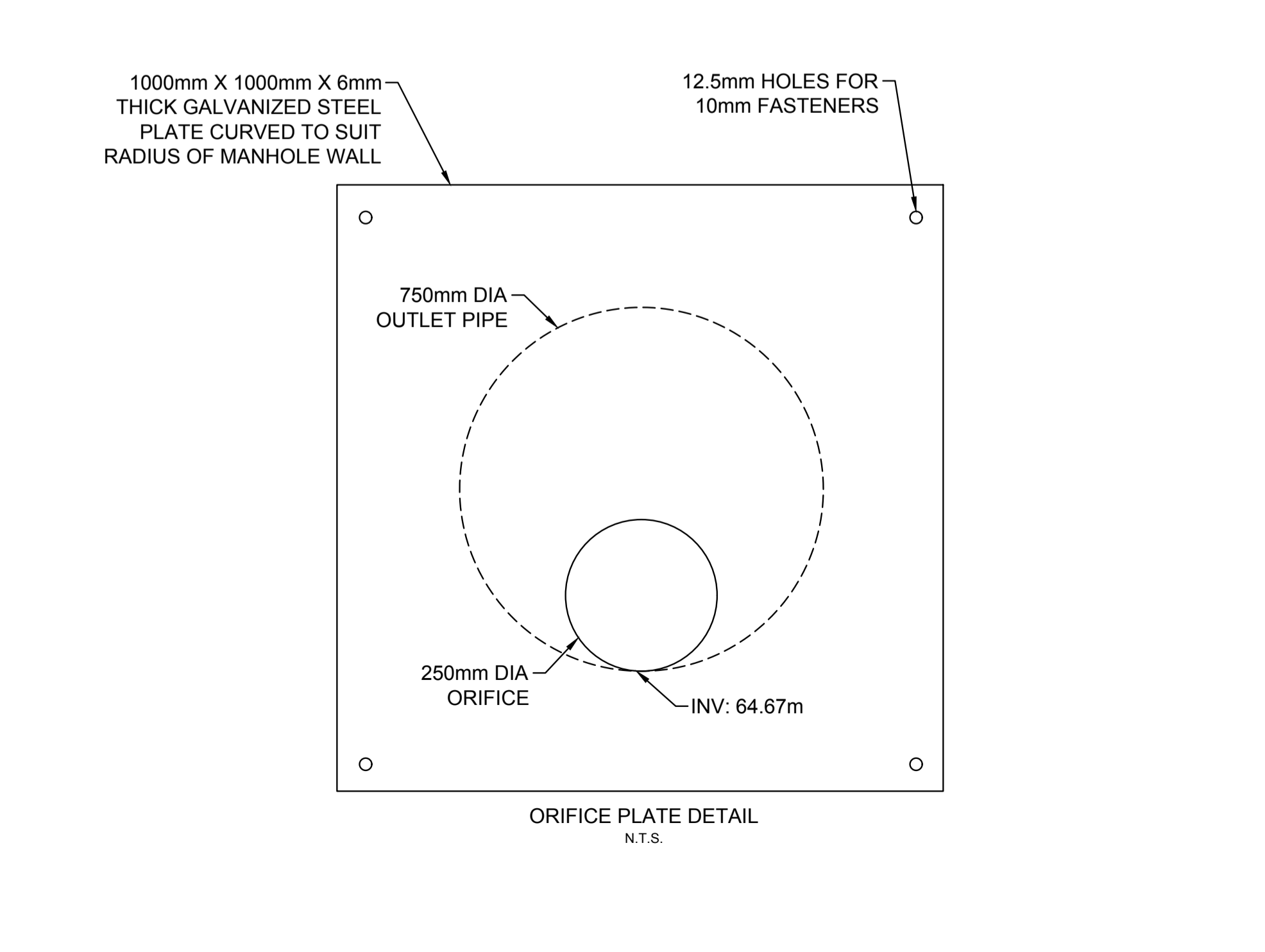
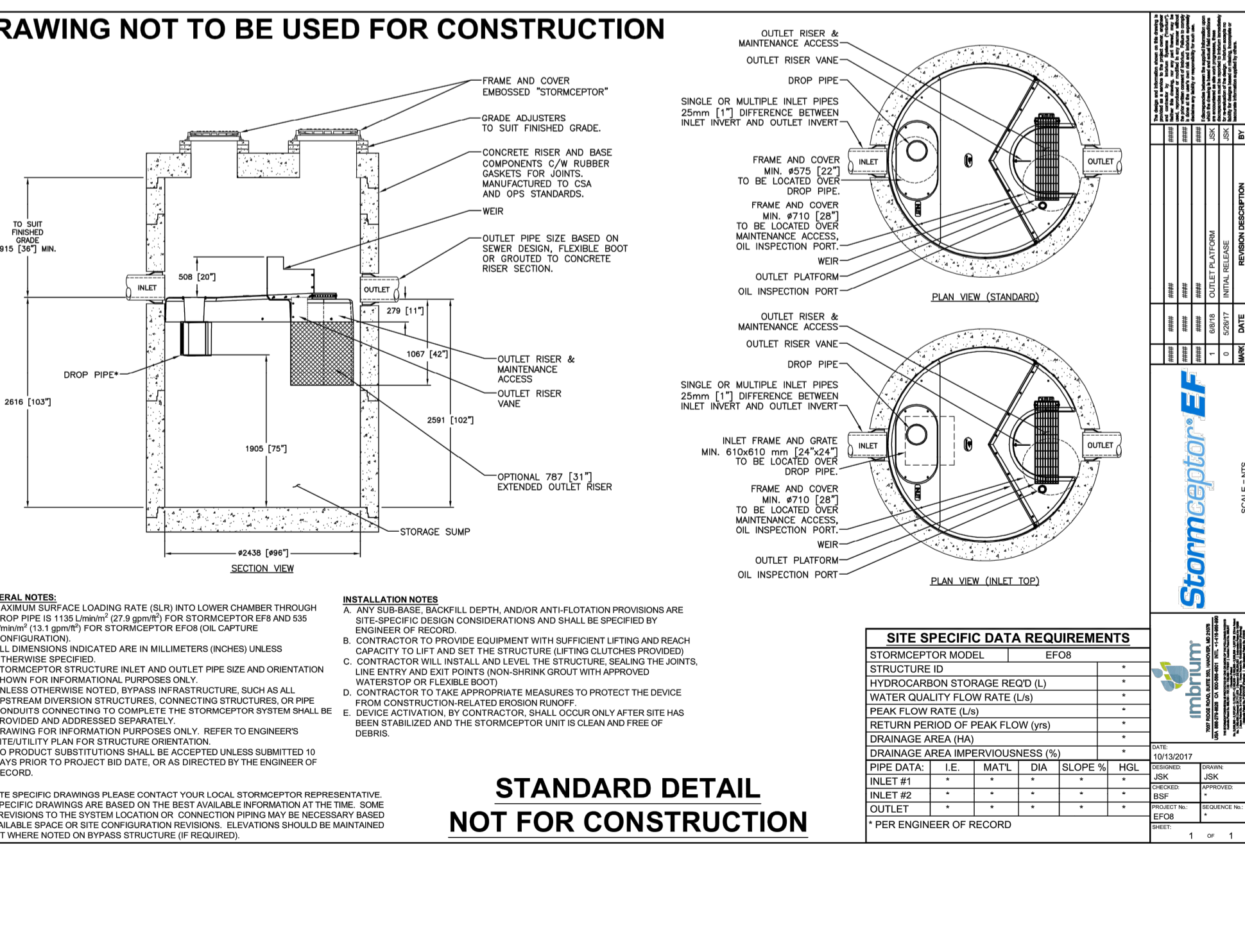
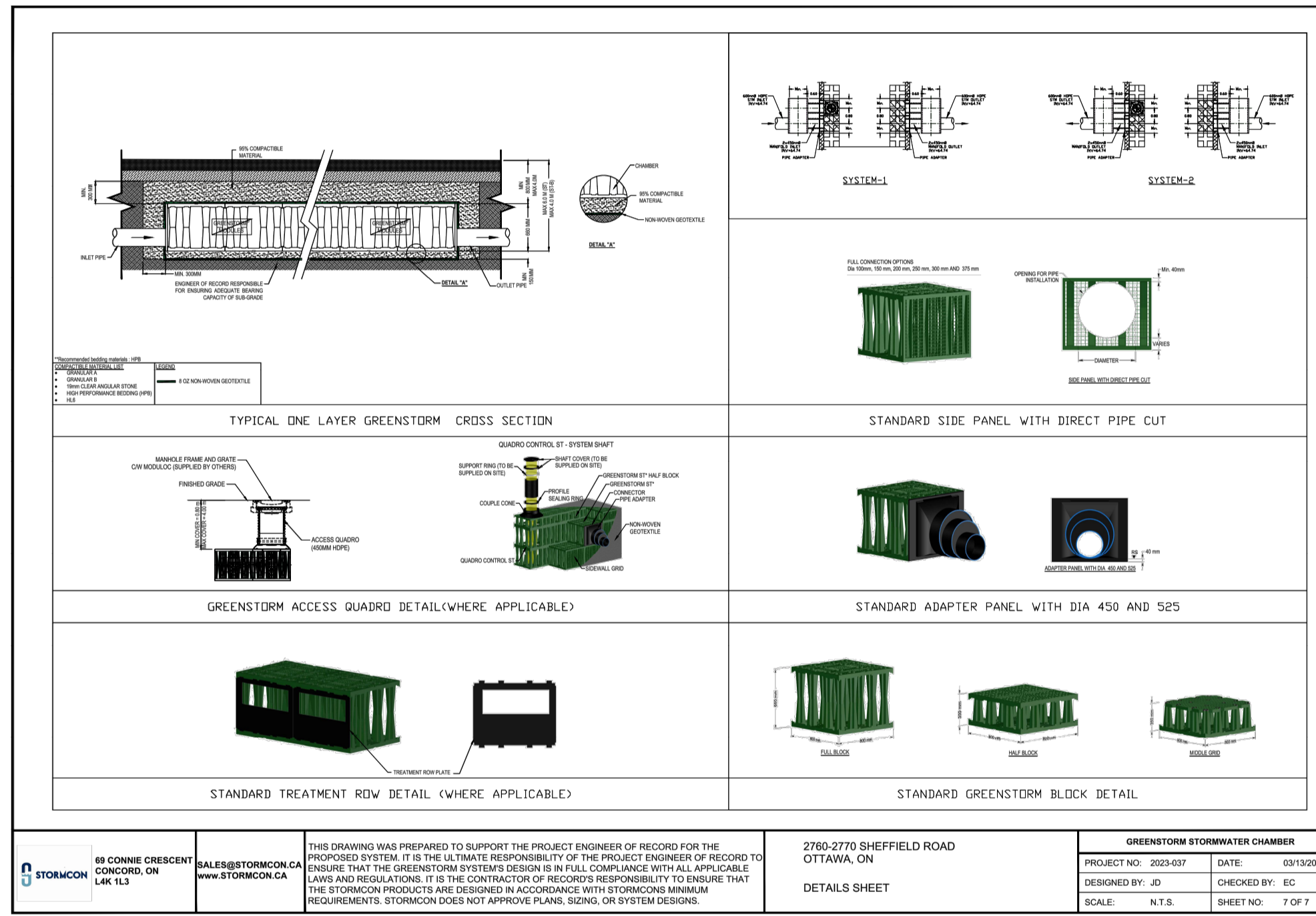
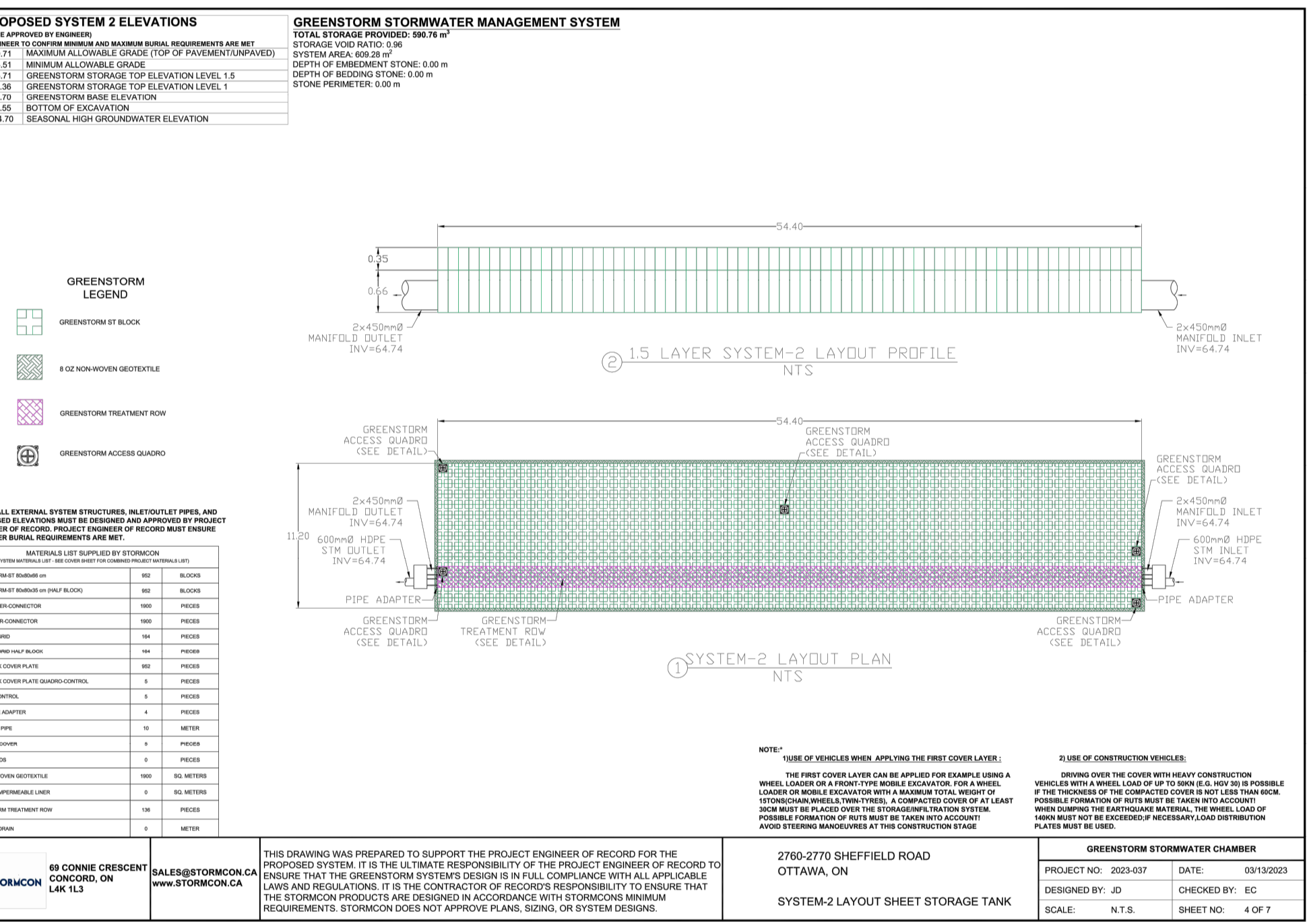
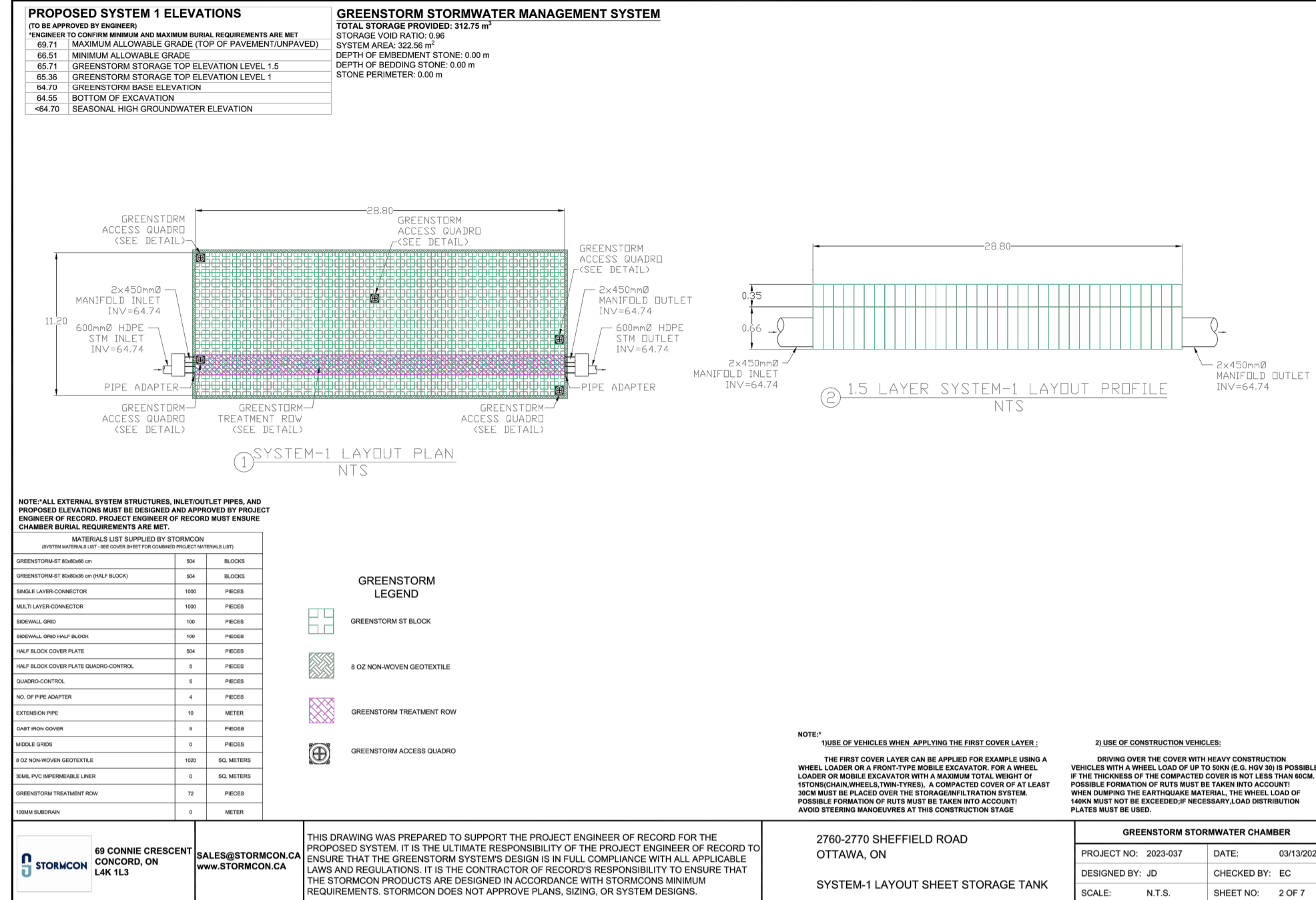
2760-2770 SHEFFIELD ROAD  
OTTAWA, ON

DRAWING INDEX

Table with 2 columns: TITLE, SHEET NO. Includes entries for COVER SHEET (1 OF 7), SYSTEM LAYOUT SHEETS (2-5 OF 7), SYSTEM OVERLAY SHEET (6 OF 7), and DETAIL SHEET (7 OF 7).

PROJECT INFORMATION table with columns: SITE CONTACT, ENGINEER / TECHNICAL SPECIALIST, SALES REP, PROJECT NO., REVISION, DATE, COMMENT, BY, JD.

GENERAL NOTES: 1. COORDINATE WITH MANUFACTURER'S REPRESENTATIVE/DISTRIBUTOR FOR PRE-CONSTRUCTION MEETING AND SITE INSPECTION DURING INSTALLATION. 2. ENGINEERING DRAWINGS SUPERSEDE ALL PROVIDED DOCUMENTATION. REFER TO SITE ENGINEERS FOR ADDITIONAL INSTRUCTIONS. 3. COORDINATE GREENSTORM INSTALLATION ACTIVITIES WITH OTHER SITE ACTIVITIES. 4. ALL DIMENSIONS ARE IN METERS UNLESS NOTED OTHERWISE. 5. THE SUB-GRADE AND SIDE BACKFILL TO BE COMPACTED TO 95% SPD OR AS DIRECTED BY THE QUALIFIED ENGINEER. 6. PRESENCE OF GROUND WATER ABOVE THE BASE OF THE SYSTEM MUST BE IDENTIFIED TO STORMCON AT THE MAXIMUM AND MINIMUM INSTALLATION DEPTHS TO ENSURE THE GROUND WATER IS ABOVE THE BASE OF THE SYSTEM UNLESS OTHERWISE NOTED. 7. CONFIRM GEOTECHNICAL SOIL EVALUATION BY A QUALIFIED ENGINEER TO DETERMINE SUITABILITY OF STRUCTURAL INSTALLATION. 8. CONFIRM FOR BURIED UNDERGROUND UTILITIES INCLUDING GAS, ELECTRICAL, PIPES AND CONCRETS. 9. ROOTS FROM SURROUNDING TREES MAY DAMAGE THE SYSTEM. DESIGN ENGINEER TO ENSURE ADEQUATE SEPARATION FROM ALL TREES. 10. WHEN INSTALLED IN CONFORMANCE TO THE INSTALLATION GUIDELINES, GREENSTORM BY CAN HANDLE STANDARD 40-45 TRUCK LOADS (AFTER 15MIN COVER) FOR NON-DRAINAGE LOADS AND INSTALLATION WITHIN GREENSTORM. CONTACT MANUFACTURER'S REPRESENTATIVE FOR TRUCK, TRAILER OR OTHER MEANS TO FULLY LOAD THE CONSTRUCTION IS COMPLETE. 11. PROTECT THE INSTALLATION AGAINST DAMAGE WITH CONSTRUCTION TAPE, FENCING OR OTHER MEANS TILL THE CONSTRUCTION IS COMPLETE. 12. ENSURE THAT CONSTRUCTION FOLLOWS APPLICABLE FEDERAL, PROVINCIAL, LOCAL, MUNICIPAL AND LOCAL LAWS, ORDINANCES, REGULATIONS AND SAFETY REQUIREMENTS. 13. VEHICULAR LOADS IS LIMITED TO 10000 LBS (4540 KG). THE USE OF EQUIPMENT OVER GREENSTORM CHAMBERS IS LIMITED. 14. REQUIREMENTS FOR ACCESSIBLE ARE APPROXIMATE AND MAY VARY BASED ON OVERLAP, WASTAGE. 15. NO RUBBER TREAD TRUCKS, TRACTORS, OR EXCAVATORS ARE ALLOWED UNLESS PROPER FILL DEPTHS ARE REACHED IN ACCORDANCE WITH THE CONSTRUCTION GUIDE. 16. WEIGHT LIMITS FOR CONSTRUCTION EQUIPMENT CAN BE FOUND IN THE CONSTRUCTION GUIDE. 17. CHECK GREENSTORM CHAMBERS FOR DAMAGE PRIOR TO INSTALLATION. DO NOT USE DAMAGED CHAMBERS. CONTACT YOUR SUPPLIER IMMEDIATELY TO REPORT DAMAGE OR PACKAGING DEFECTS. 18. GREENSTORM CHAMBERS ARE DESIGNED TO BE USED IN ACCORDANCE WITH STORMCON'S MINIMUM REQUIREMENTS. STORMCON DOES NOT APPROVE PLANS, SIZING, OR SYSTEM DESIGNS.



APPROVED By Lily Xu at 3:50 pm, Dec 15, 2023. Includes signature and title: LILY XU, MCIP, RPP, MANAGER, DEVELOPMENT REVIEW SOUTH PLANNING, INFRASTRUCTURE & ECONOMIC DEVELOPMENT DEPARTMENT, CITY OF OTTAWA.

WARE MALCOMB LEADING DESIGN FOR COMMERCIAL REAL ESTATE. Includes contact information, professional engineer license (N.H. ITZKOVSKY 100173150), and project details: 2760-2770 SHEFFIELD ROAD, OTTAWA, ONTARIO, DETAILS. CITY FILE # D07-12-23-0065, PLAN # 19053.