

brigit

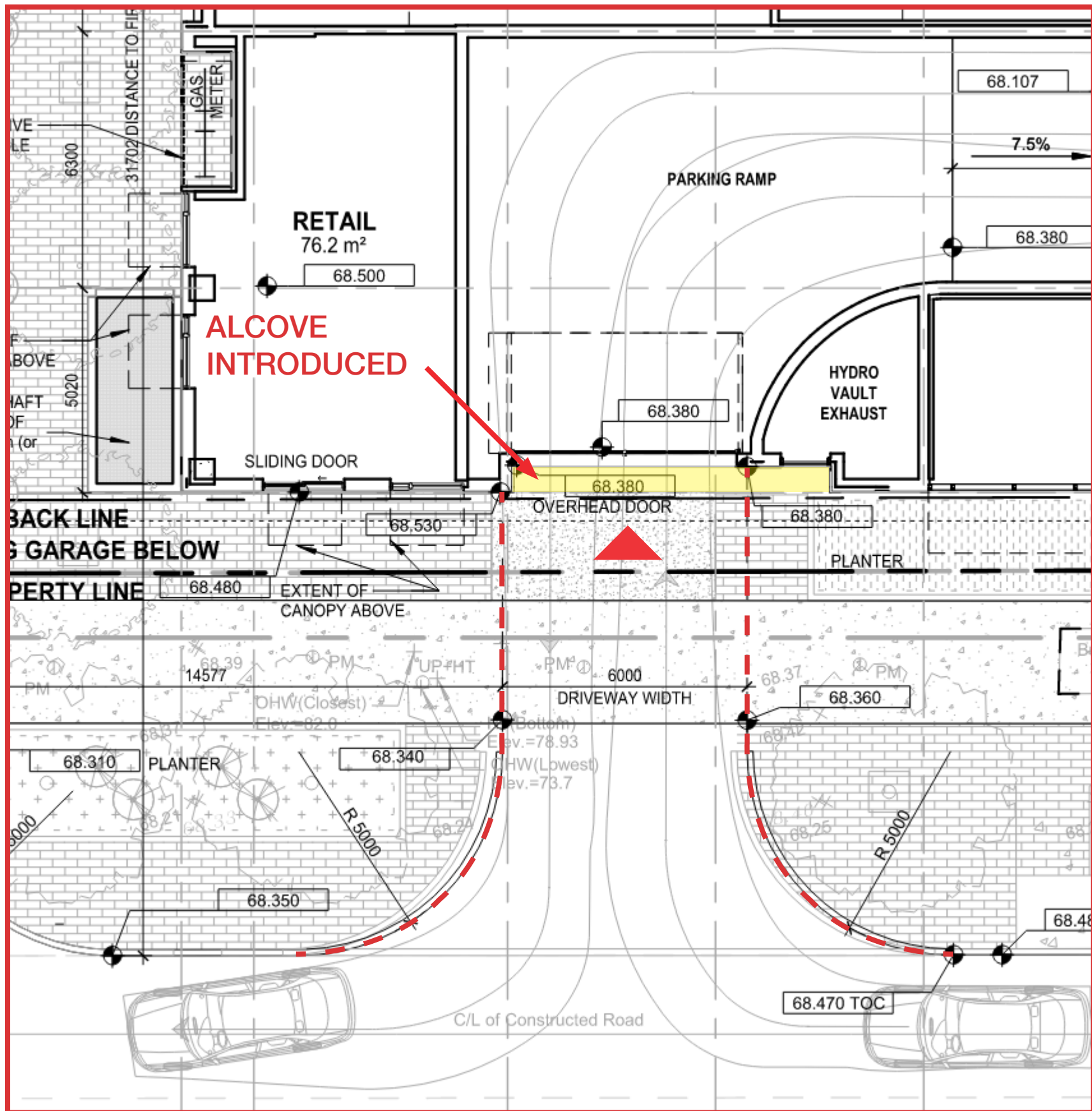
265 Catherine Street, Ottawa

Meeting with City Staff - Garage Entrances and Loading Bays

2 May 2024

**BDP.
Quadrangle**





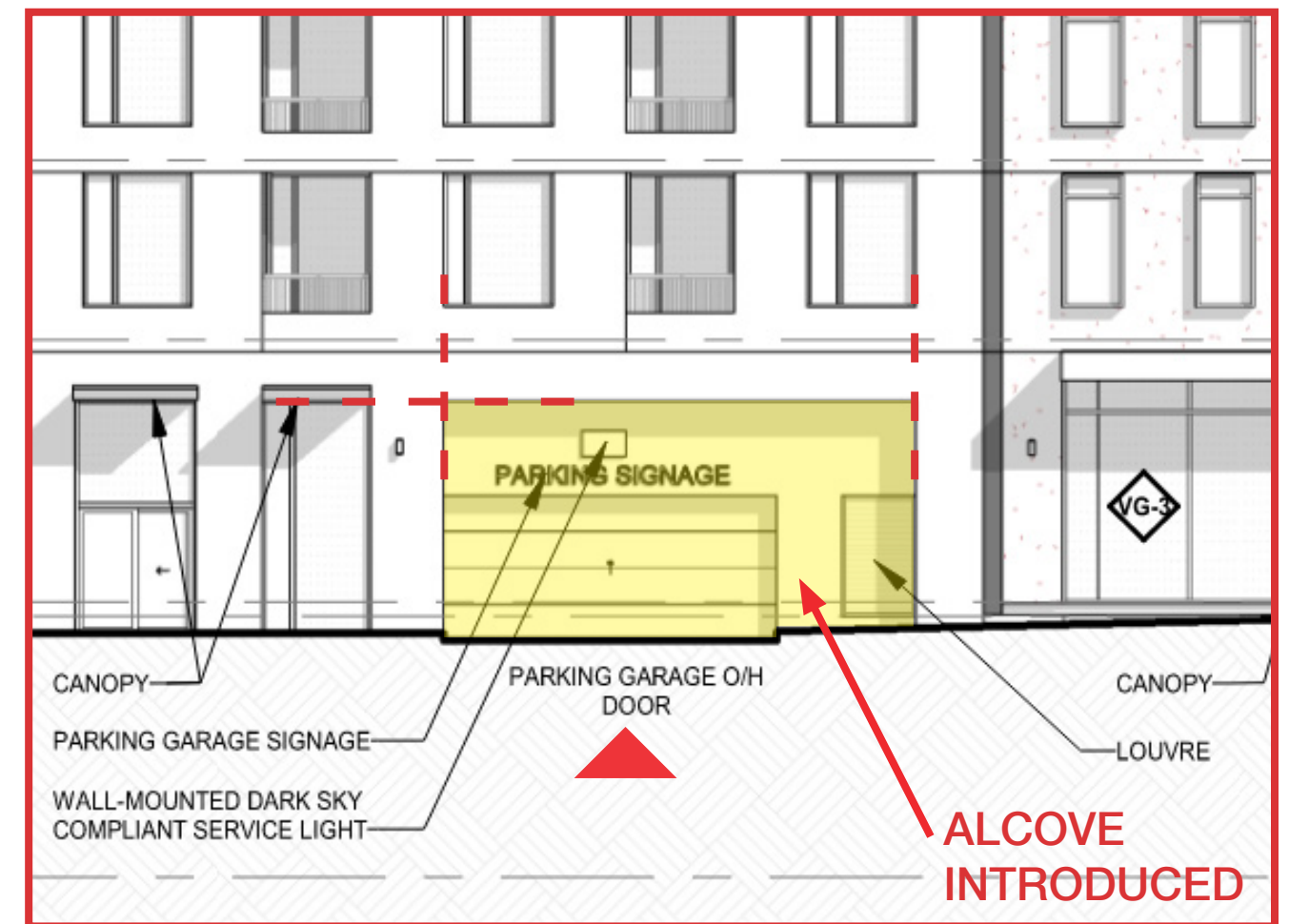
An alcove has been introduced to visually separate the parking garage entrance and louvre from the building façade and public realm.

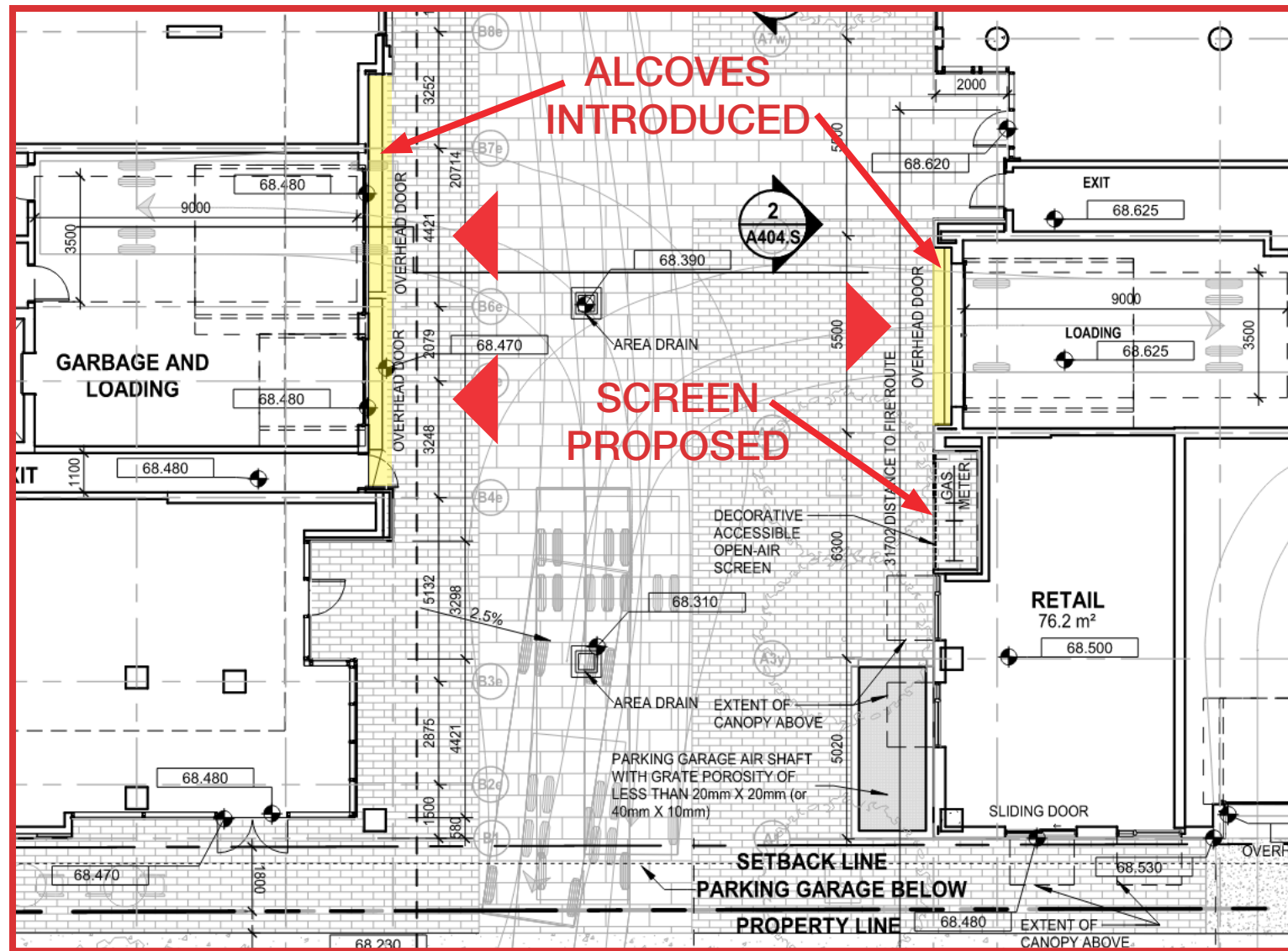
The driveway will shift to align.

The alcove was positioned to align with adjacent building elements.

Parking garage signage to be determined.

PREVIOUS

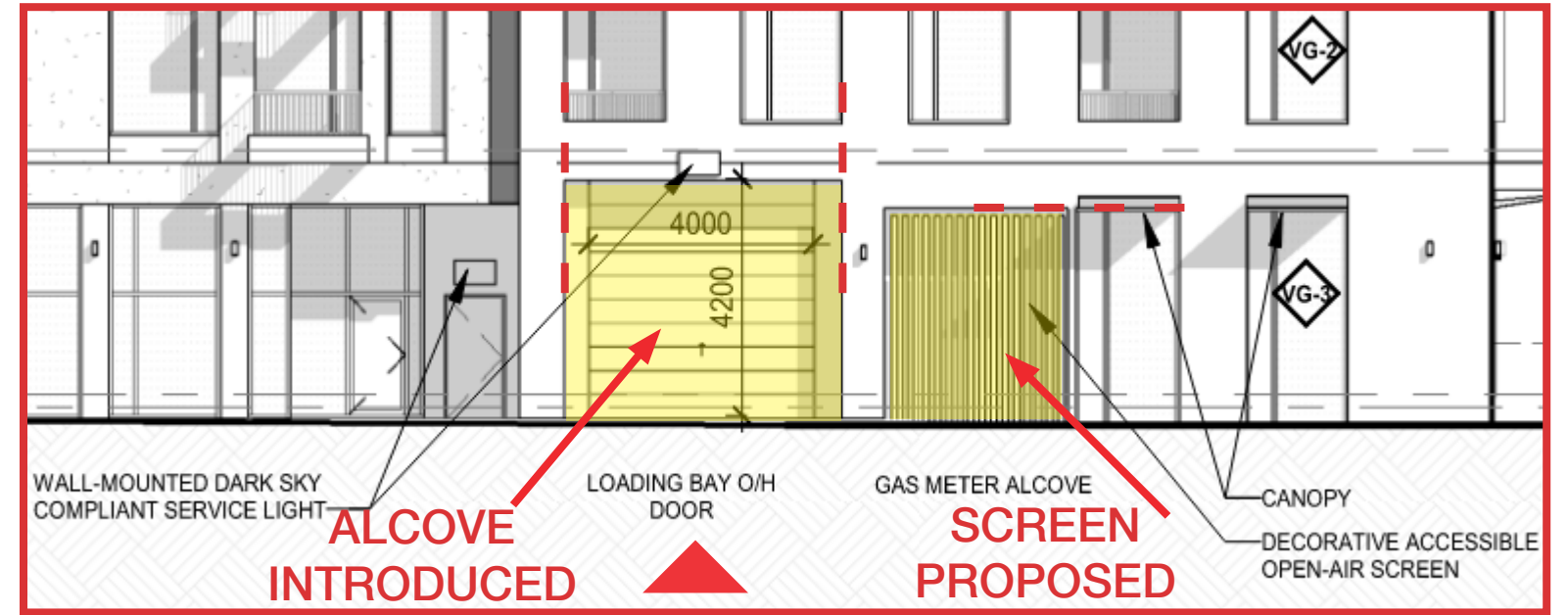
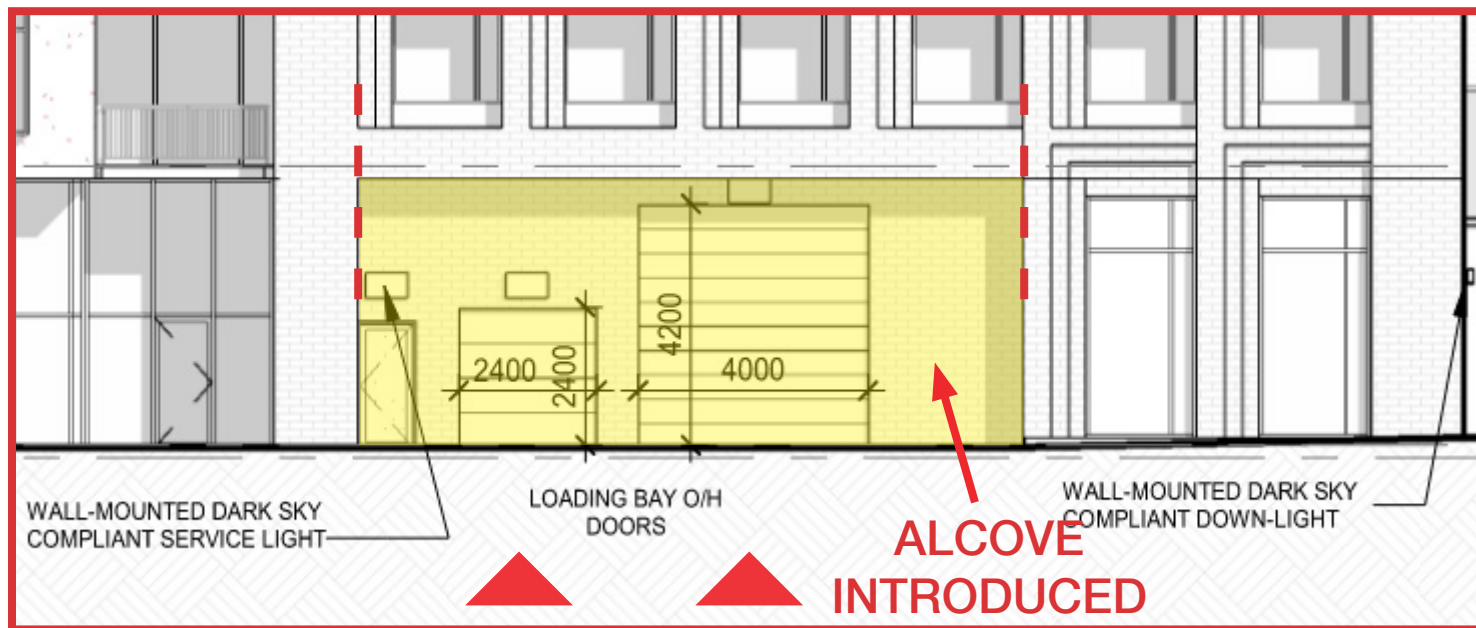




Alcoves has been introduced to group the utility doors and to visually separate this area from the building façade and public realm.

The alcoves were positioned to align with adjacent building elements. Loading Bay doors are 4 m wide x 4.2 m high.

A decorative open-air screen is proposed to shield the gas meter subject to Enbridge approval.



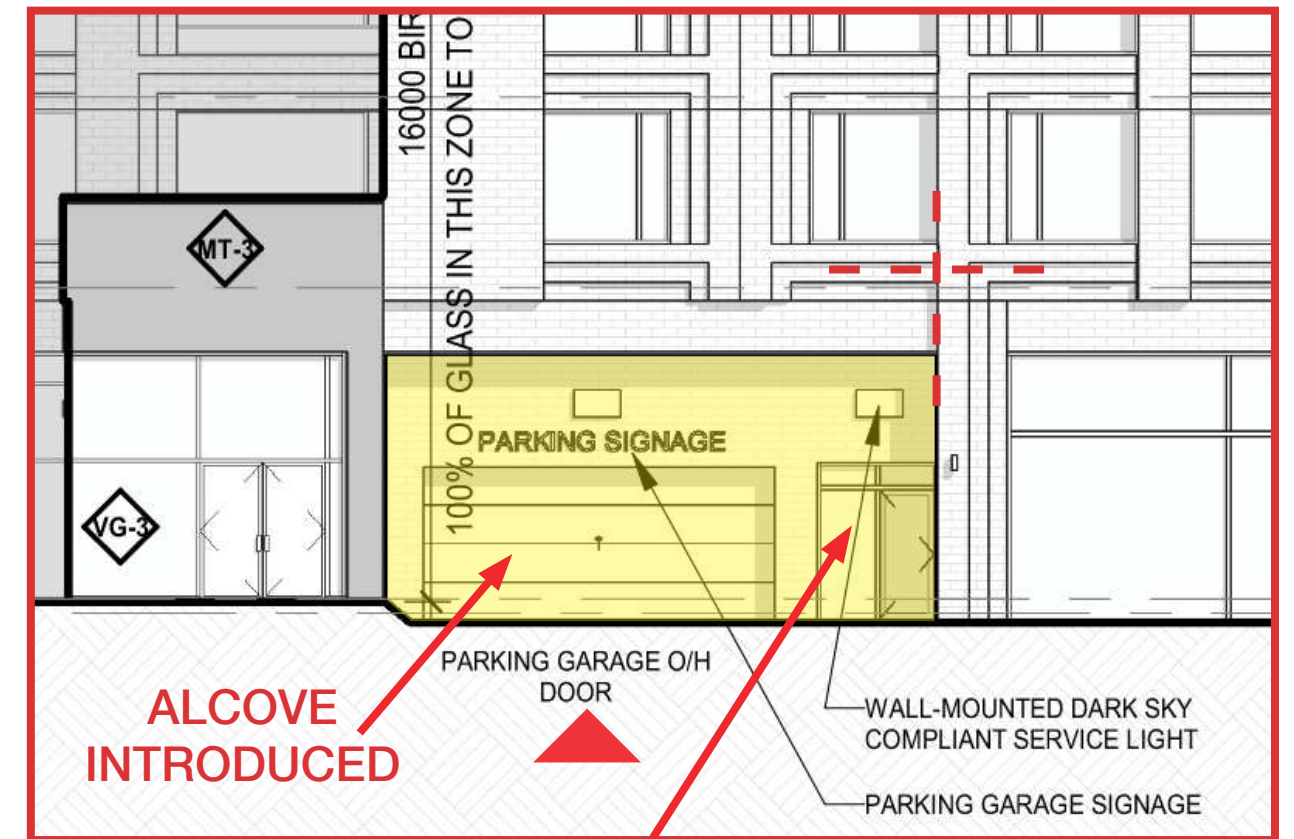
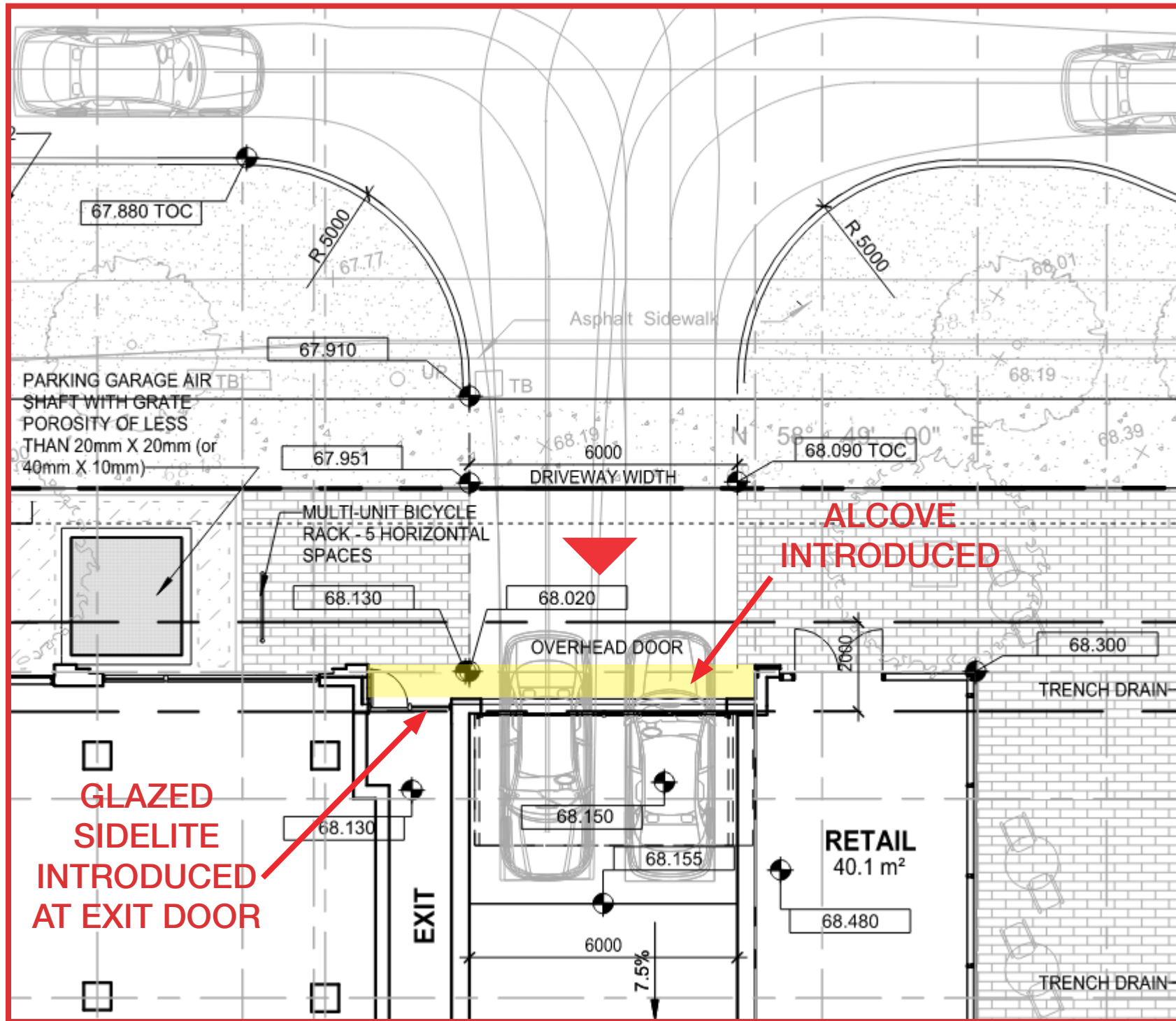
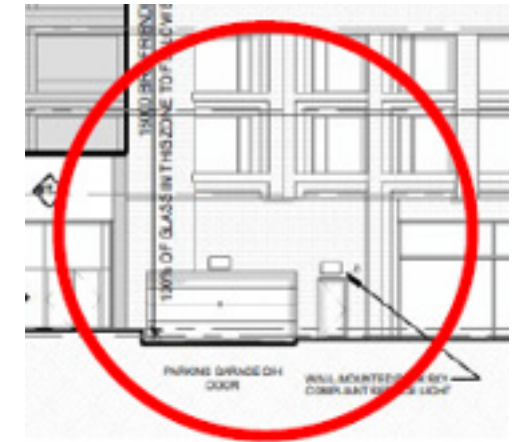
An alcove has been introduced to visually separate the parking garage entrance and exit door from the building façade and public realm.

The alcove was positioned to align with adjacent building elements.

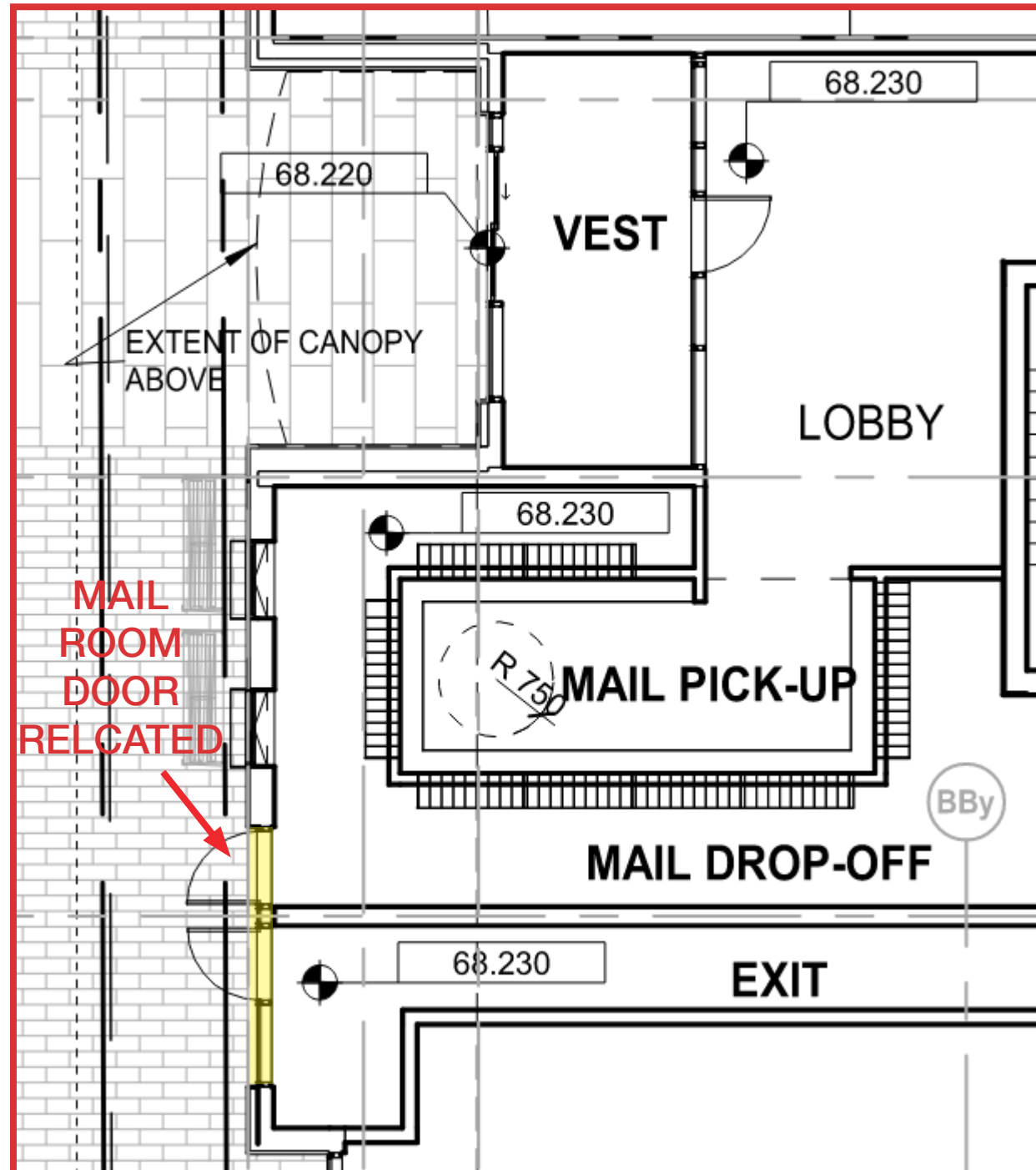
Parking garage signage to be determined.

A glazed sidelite was introduced at the exit door for added visibility, safety and security.

PREVIOUS



GLAZED SIDELITE
INTRODUCED AT EXIT DOOR



The mail drop-off room door has been relocated and grouped with the exit door.

Additional glazing has been introduced to provide more interest within the public realm and to provide more visibility, safety and security at the exit door.

The larger window and door segment was positioned to align to the adjacent retail window.

PREVIOUS

