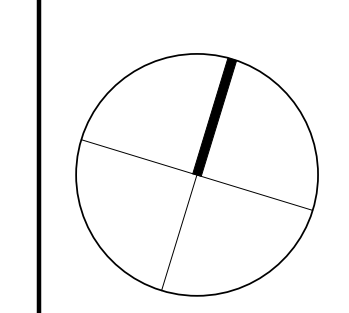


Date	No.	Description
2024-05-23	Zoning By-Law Amendment & Site Plan Approval (Resubmission)	
2024-03-15	Zoning By-Law Amendment & Site Plan Approval (Resubmission)	
2023-05-15	Zoning By-Law Amendment & Site Plan Approval	

Date	No.	Description
		ISSUE RECORD



## BDP. Quadrangle

Quadrangle Architects Limited  
 1410 Spadina Avenue, Suite 2100, Toronto, ON M5S 2S8  
 416-598-1242 www.bdpquadrangle.com

265 Catherine Street, Ottawa

for  
 Brigid  
 DWG190911 - 001-13-23-0017 SPC / 000-02-23-0042 28A /  
 201-01-23-0008 00A

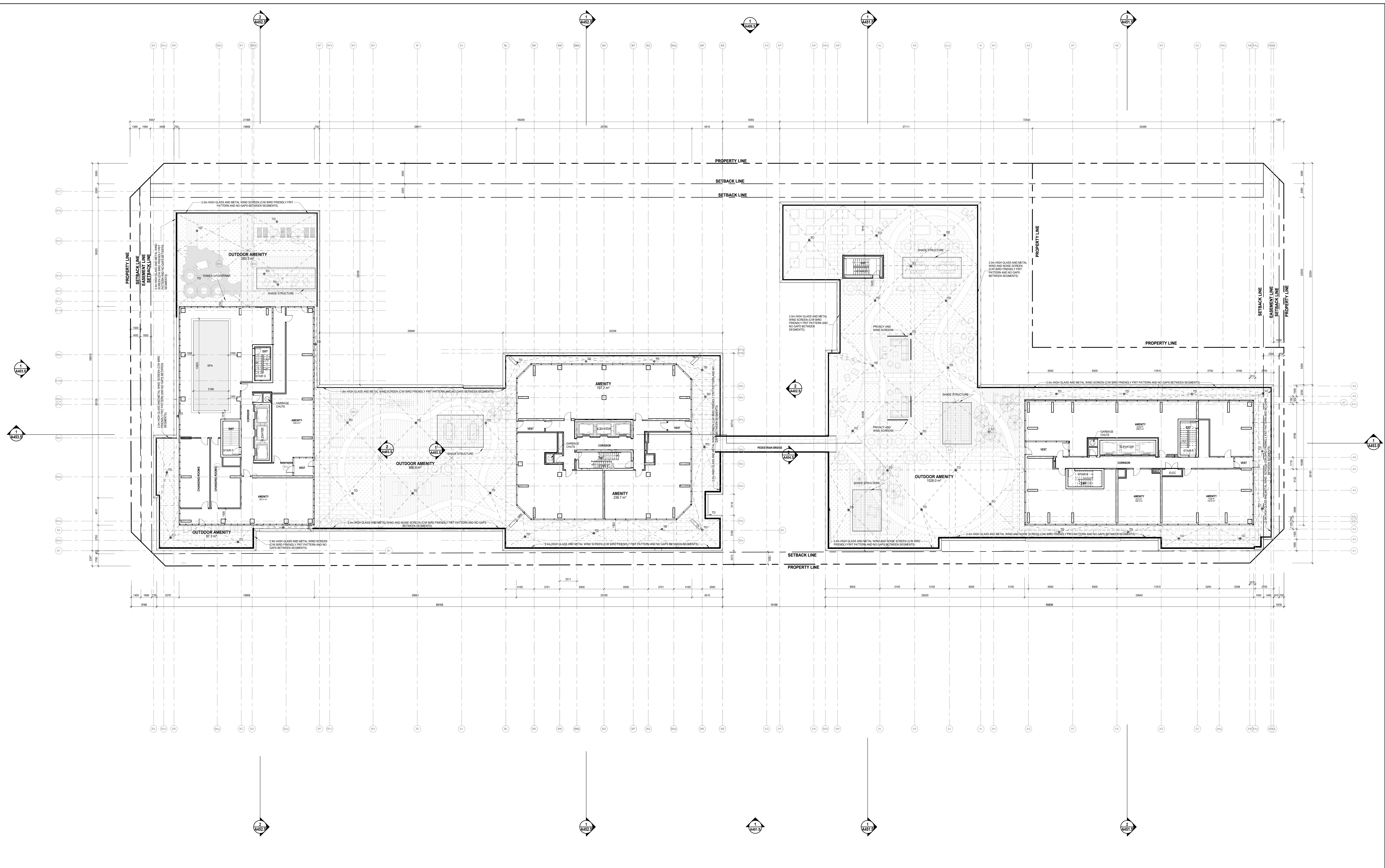
21007 1:150 GZ R/L  
 PROJECT SCALE DRAWN REVIEWED

Ground Floor Plan

# A200.S

Note: This drawing is the property of the Architect and may not be reproduced or used without the written consent of the Architect. The Architect is responsible for the accuracy of the information and dimensions on this drawing. Any discrepancies between the drawings and the actual construction shall be resolved by the Architect and shall constitute part of the construction work.

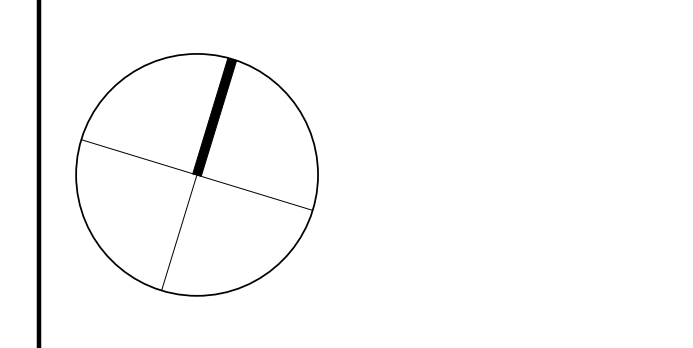




Date	No.	Description
2024-05-23	1	Zoning By-Law Amendment & Site Plan Approval (Resubmission)
2024-03-15	2	Zoning By-Law Amendment & Site Plan Approval (Resubmission)
2023-05-15	3	Zoning By-Law Amendment & Site Plan Approval

ISSUE RECORD	



**BDP.**  
**Quadrangle**

Quadrangle Architects Limited  
 1700 West Beaver Creek Avenue, Suite 2100, Toronto, ON M2B 0B8  
 T: 416 398-1200 www.bdpquadrangle.com

265 Catherine Street, Ottawa

for  
**Brigil**  
 DWG199911 - 001-13-23-0007-SPC / 002-02-23-0042-ZBA /  
 201-01-23-0008-CPA

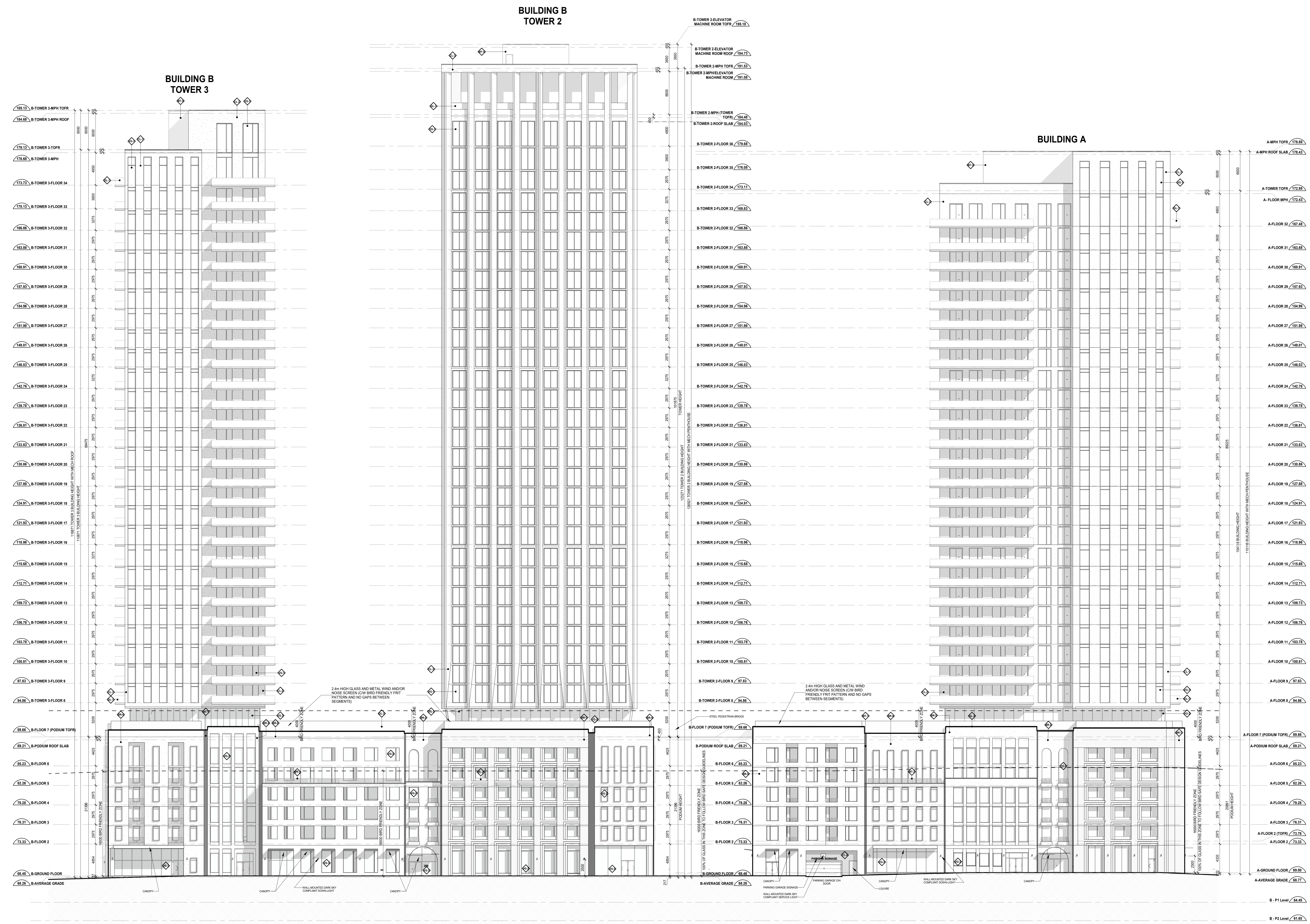
21007 1:150 GZ R/L  
 PROJECT SCALE DRAWN REVIEWED

Seventh Floor Plan

**A207.S**

Note: This drawing is the property of the Architect and may not be reproduced or used without the expressed approval of the Architect. The Architect is responsible for the accuracy of the information and does not warrant or make any representation as to the accuracy of the information or the results of its use. The Architect is not responsible for any errors or omissions in this drawing or for any consequences arising therefrom.





- LEGEND:**
- BRICK - COLOUR 1
  - BRICK - COLOUR 2
  - BRICK - COLOUR 3
  - BRICK - COLOUR 4
  - BRICK - COLOUR 5 (WHITE)
  - CLADDING 1 - WHITE
  - CLADDING 2 - DARK GREY
  - CLADDING 3 - OFF-WHITE
  - CLADDING 4 - TAN
  - CLADDING 5 - DARK GREY 2
  - PLATE ALUM CLADDING SYSTEM - COLOUR 1
  - BALCONY AND TERRACE RAILING HANDRAILS AND PRIVACY SCREENS, SUPPORT POSTS, HANDRAILS AND
  - PLATE ALUM CLADDING SYSTEM - COLOUR 2
  - METAL FLASHING AND PARAPET CAP FLASHING
  - SHEET STEEL CLADDING SYSTEM
  - BALCONY SLAB EDGE COVER
  - WINDOW SYSTEM METAL SPANDREL PROTECTING PANEL
  - WINDOW SYSTEM METAL SPANDREL FLUSH PANEL
  - WINDOW SYSTEM METAL SPANDREL RECESSED PANEL
  - RESIDENTIAL VISION GLASS - IGU
  - RESIDENTIAL VISION GLASS V5-1 WITH BIRD FRIENDLY FRUIT PATTERN
  - RETAIL VISION GLASS WITH BIRD-FRIENDLY FRUIT PATTERN
  - SPANDREL GLASS - COLOUR 1
  - RAILING GLASS
  - RAILING GLASS WITH BIRD-FRIENDLY FRUIT PATTERN
  - PRIVACY SCREEN GLASS
  - RESIDENTIAL AND STOREFRONT WINDOW SYSTEM GLASS
  - ARCHITECTURAL LOUVER

Date	No.	Description
2024-05-23	Zoning By-Law Amendment & Site Plan Approval (Resubmission)	
2024-03-15	Zoning By-Law Amendment & Site Plan Approval (Resubmission)	
2023-05-15	Zoning By-Law Amendment & Site Plan Approval	

**REVISION RECORD**

No.	Description
1	ISSUE RECORD

**BDP. Quadrangle**

Quadrangle Architects Limited  
 1100 Bay Street, Suite 2000, Toronto, ON M5V 0B8  
 416 598-1200 www.bdpquadrangle.com

265 Catherine Street, Ottawa

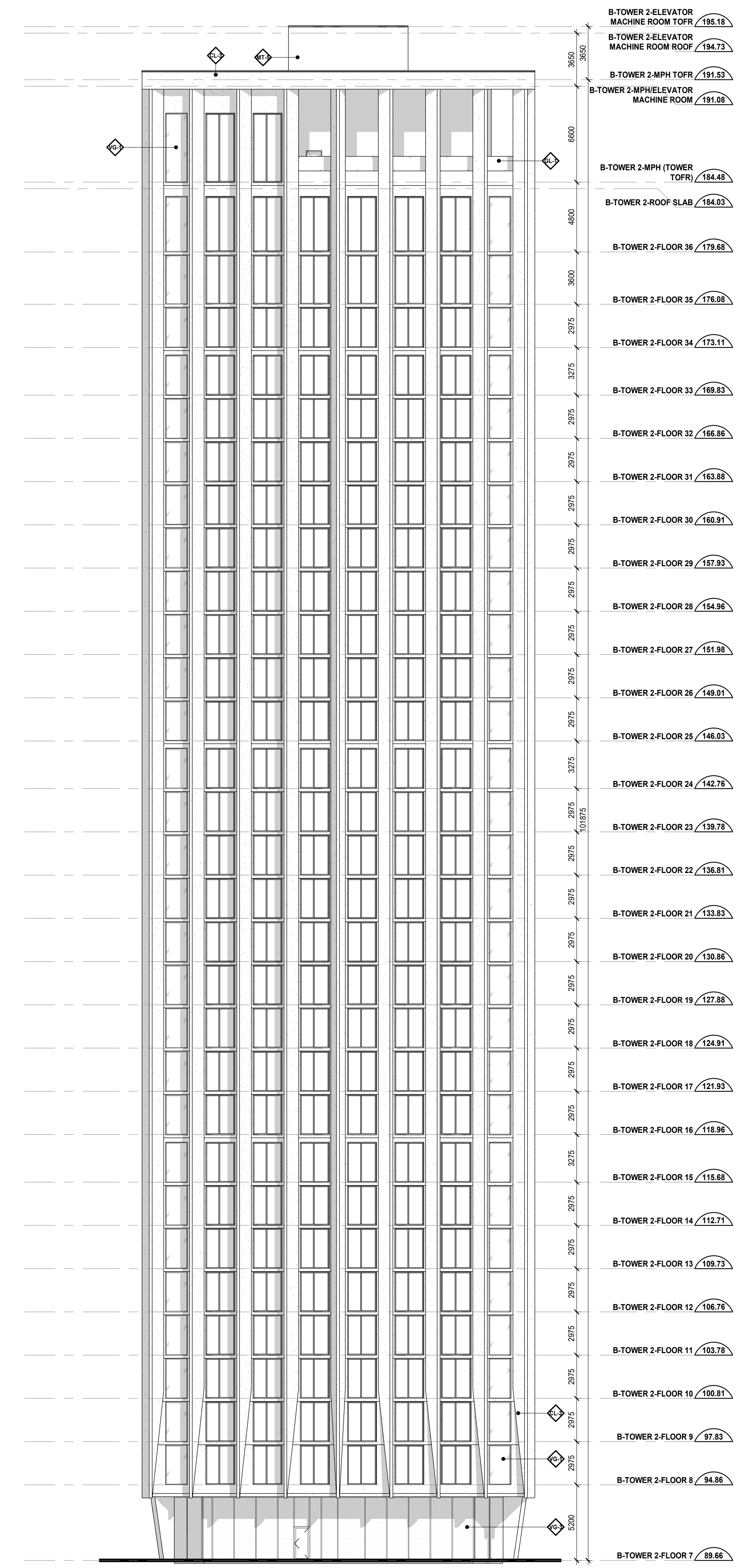
for  
 Brigid  
 DWG: 1001 - 001-12-001-SPC / 002-02-004-ZBA / 001-01-004-00A

21007 1:200 GZ RUL  
 PROJECT SCALE DRAWN REVIEWED

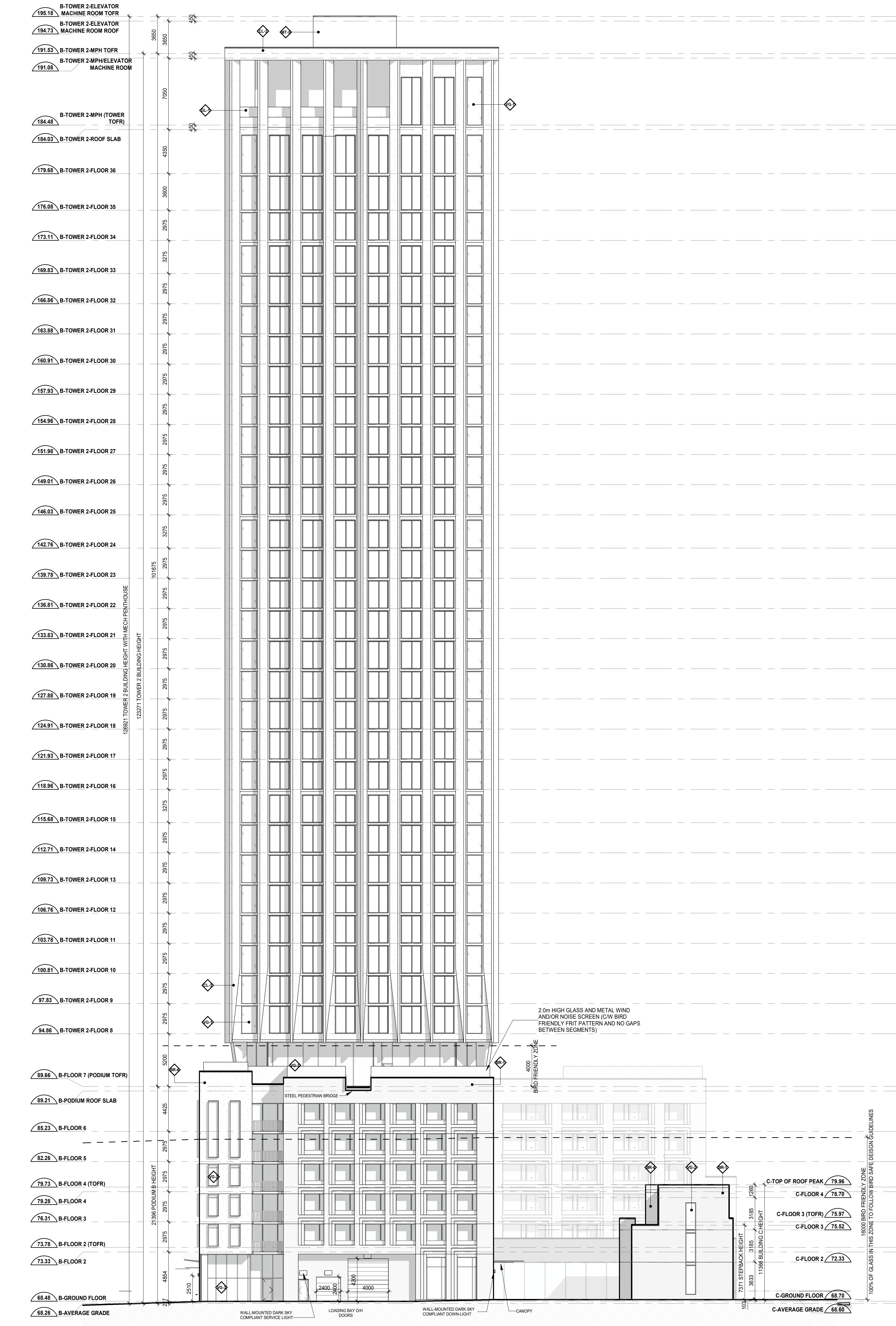
South Elevation

**A401.S**





1 Tower 2 - West Elevation



2 Building B - East Elevation

**LEGEND:**

- BRICK - COLOUR 1
- BRICK - COLOUR 2
- BRICK - COLOUR 3
- BRICK - COLOUR 4
- BRICK - COLOUR 5 (WHITE)
- CLADDING 1 - WHITE
- CLADDING 2 - DARK GREY
- CLADDING 3 - OFF-WHITE
- CLADDING 4 - TAN
- CLADDING 5 - DARK GREY 2
- PLATE ALUM CLADDING SYSTEM - COLOUR 1
- BALCONY AND TERRACE RAILING HANDRAILS AND PRIVACY SCREENS SUPPORT POSTS, HANDRAILS AND FLASHING
- PLATE ALUM CLADDING SYSTEM - COLOUR 2
- METAL FLASHING AND PARAPET CAP FLASHING
- SHEET STEEL CLADDING SYSTEM
- BALCONY SLAB EDGE COVER
- WINDOW SYSTEM METAL SPANDREL PROJECTING PANEL
- WINDOW SYSTEM METAL SPANDREL FLUSH PANEL
- WINDOW SYSTEM METAL SPANDREL RECESSED PANEL
- RESIDENTIAL VISION GLASS - IGU
- RESIDENTIAL VISION GLASS VIG-1 WITH BIRD FRIENDLY FRST PATTERN
- RETAIL VISION GLASS WITH BIRD FRIENDLY FRST PATTERN
- SPANDREL GLASS - COLOUR 1
- RAILING GLASS
- RAILING GLASS WITH BIRD FRIENDLY FRST PATTERN
- PRIVACY SCREEN GLASS
- RESIDENTIAL AND STOREFRONT WINDOW SYSTEM GLUVE
- ARCHITECTURAL LOUIRE

Date	No.	Description

Date	No.	Description

REVISION RECORD

Date	Description
2024-05-23	Zoning By-Law Amendment & Site Plan Approval (Resubmission)
2024-03-15	Zoning By-Law Amendment & Site Plan Approval (Resubmission)
2023-05-15	Zoning By-Law Amendment & Site Plan Approval

ISSUE RECORD

## BDP Quadrangle

Quadrangle Architects Limited  
 1100 West Beaver Creek Avenue, Suite 2000, Toronto, ON M3V 0B8  
 416-291-1200 www.bdpquadrangle.com

265 Catherine Street, Ottawa

for  
 Brigil  
 DWG190911 - 001-13-23-0017-SPC / 002-02-23-0042-ZBA / 201-01-23-0008-DMA  
 21007 1:200 GZ R/L  
 PROJECT SCALE DRAWN REVIEWED

Building B Elevations

# A402.S

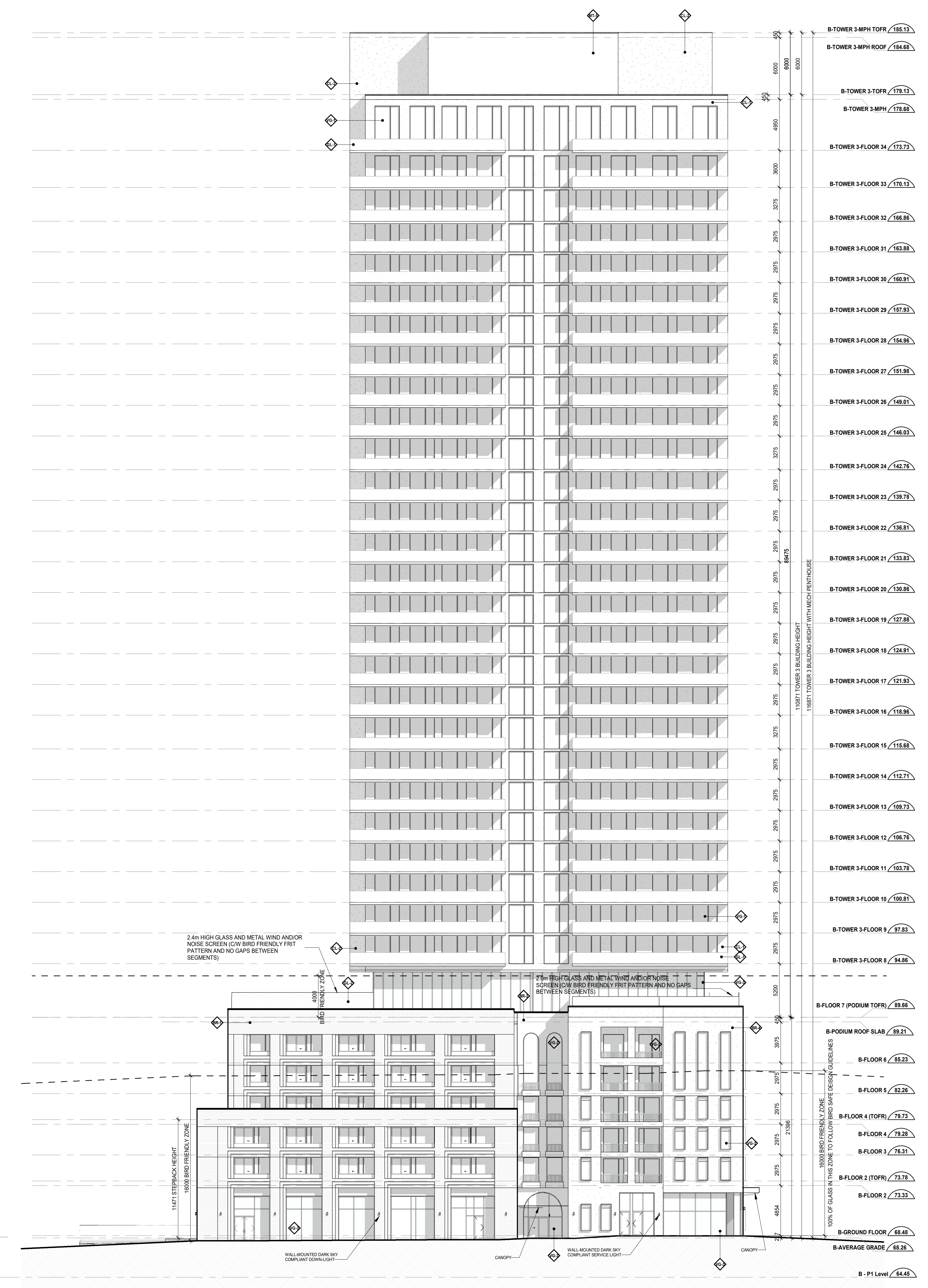
Note: This drawing is the property of the Architect and may not be reproduced or used without the expressed written consent of the Architect. The Contractor is responsible for ensuring that the drawings are used in accordance with the contract documents and specifications and shall coordinate with the Architect and other consultants prior to commencing work.

2024-05-23 10:00 AM





2 Tower 3 - East Elevation



1 Building B - West Elevation

**LEGEND:**

- BRICK - COLOUR 1
- BRICK - COLOUR 2
- BRICK - COLOUR 3
- BRICK - COLOUR 4
- BRICK - COLOUR 5 (WHITE)
- CLADDING 1 - WHITE
- CLADDING 2 - DARK GREY
- CLADDING 3 - OFF-WHITE
- CLADDING 4 - TAN
- CLADDING 5 - DARK GREY 2
- PLATE ALUM CLADDING SYSTEM - COLOUR 1
- BALCONY AND TERRACE RAILING HANDRAILS AND PRIVACY SCREENS SUPPORT POSTS, HANDRAILS AND FINISHING
- METAL FLASHING AND PARAPET CAP FINISHING
- SHEET STEEL CLADDING SYSTEM
- BALCONY GLAZING COVER
- WINDOW SYSTEM METAL SPANDREL PROJECTING PANEL
- WINDOW SYSTEM METAL SPANDREL FLUSH PANEL
- WINDOW SYSTEM METAL SPANDREL RECESSED PANEL
- RESIDENTIAL VISION GLASS - IGU
- RESIDENTIAL VISION GLASS V6-1 WITH BIRD FRIENDLY FRIT PATTERN
- RESIDENTIAL VISION GLASS WITH BIRD FRIENDLY FRIT PATTERN
- SPANDREL GLASS - COLOUR 1
- RAILING GLASS
- RAILING GLASS WITH BIRD FRIENDLY FRIT PATTERN
- PRIVACY SCREEN GLASS
- RESIDENTIAL AND STOREFRONT WINDOW SYSTEM CURVE
- ARCHITECTURAL LOUIRE

Date	No.	Description

REVISION RECORD

2024-05-23		Zoning By-Law Amendment & Site Plan Approval (Resubmission)
2024-03-15		Zoning By-Law Amendment & Site Plan Approval (Resubmission)
2023-05-15		Zoning By-Law Amendment & Site Plan Approval

ISSUE RECORD

**BDP. Quadrangle**

Quadrangle Architects Limited  
 1100 Hwy. 7, Suite 200, Toronto, ON M3H 0B8  
 416-598-1200 www.bdpquadrangle.com

265 Catherine Street, Ottawa

for  
 Brigil  
 DWG: 1001 - 001-12-001-001-SPC / 002-02-004-004-ZBA / 001-01-004-004-ZBA

21007 1:200 GZ R/L  
 PROJECT SCALE DRAWN REVIEWED

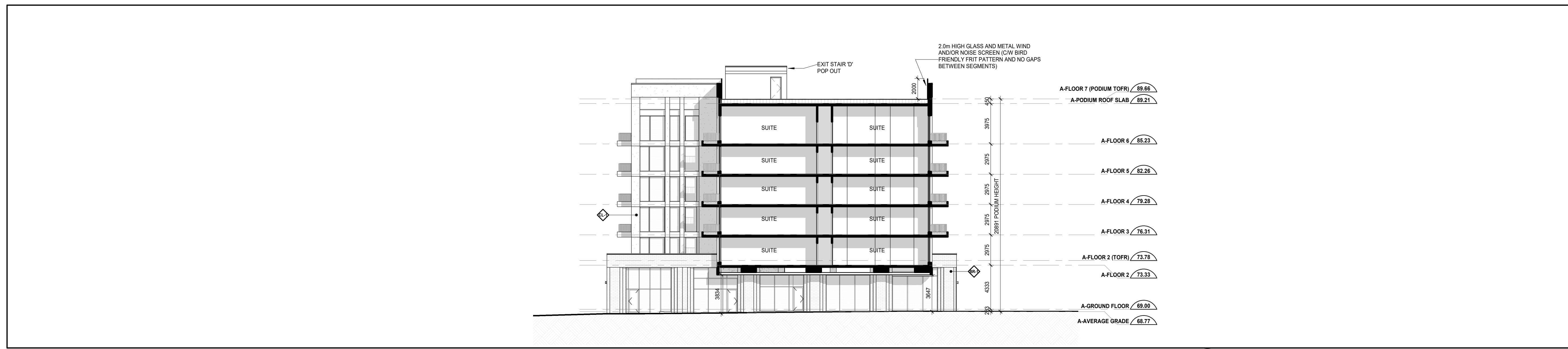
Building B Elevations 2

**A403.S**

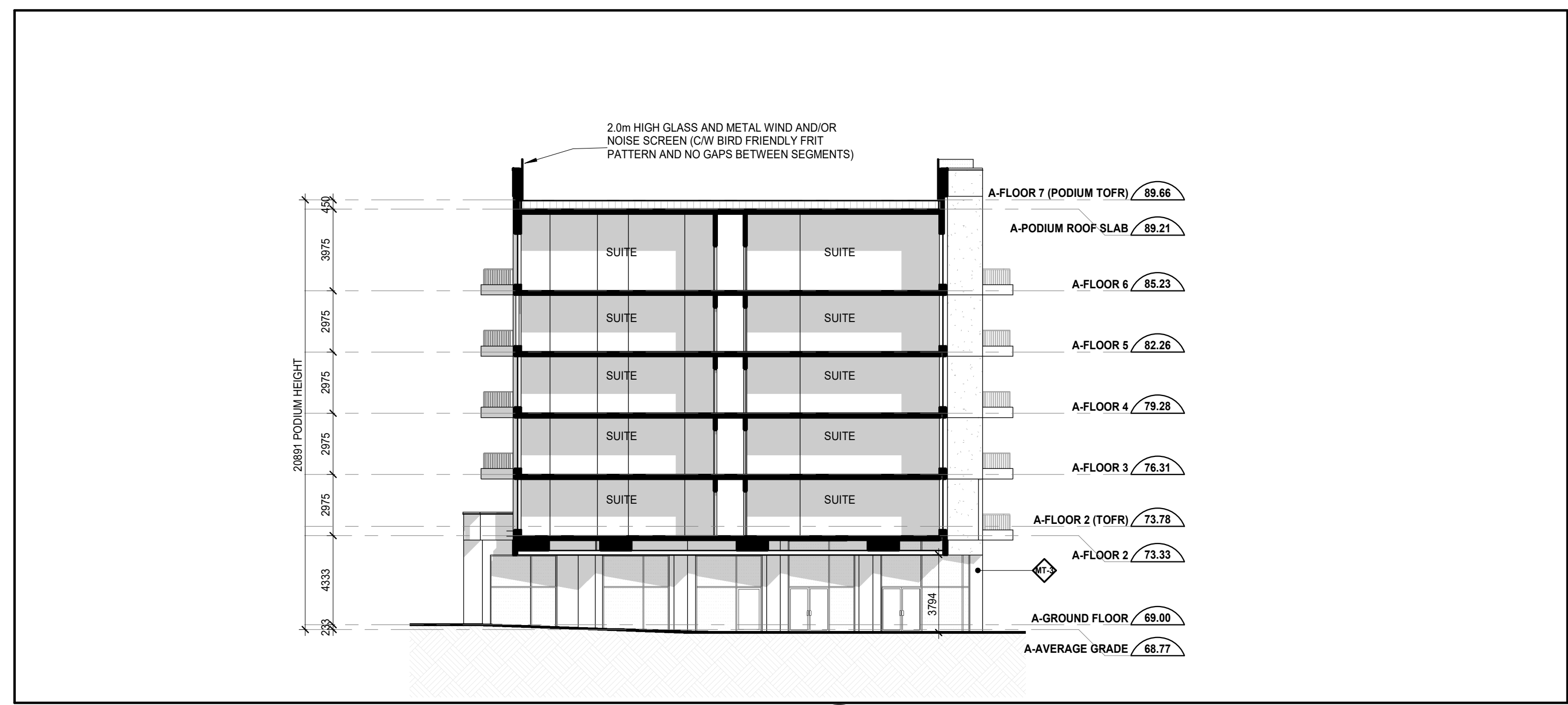
Note: This drawing is the property of the Architect and may not be reproduced or used without the express written consent of the Architect. The Contractor shall verify all dimensions and conditions on site and shall report all discrepancies to the Architect and obtain confirmation prior to commencing work.

2024-05-23 10:22 AM

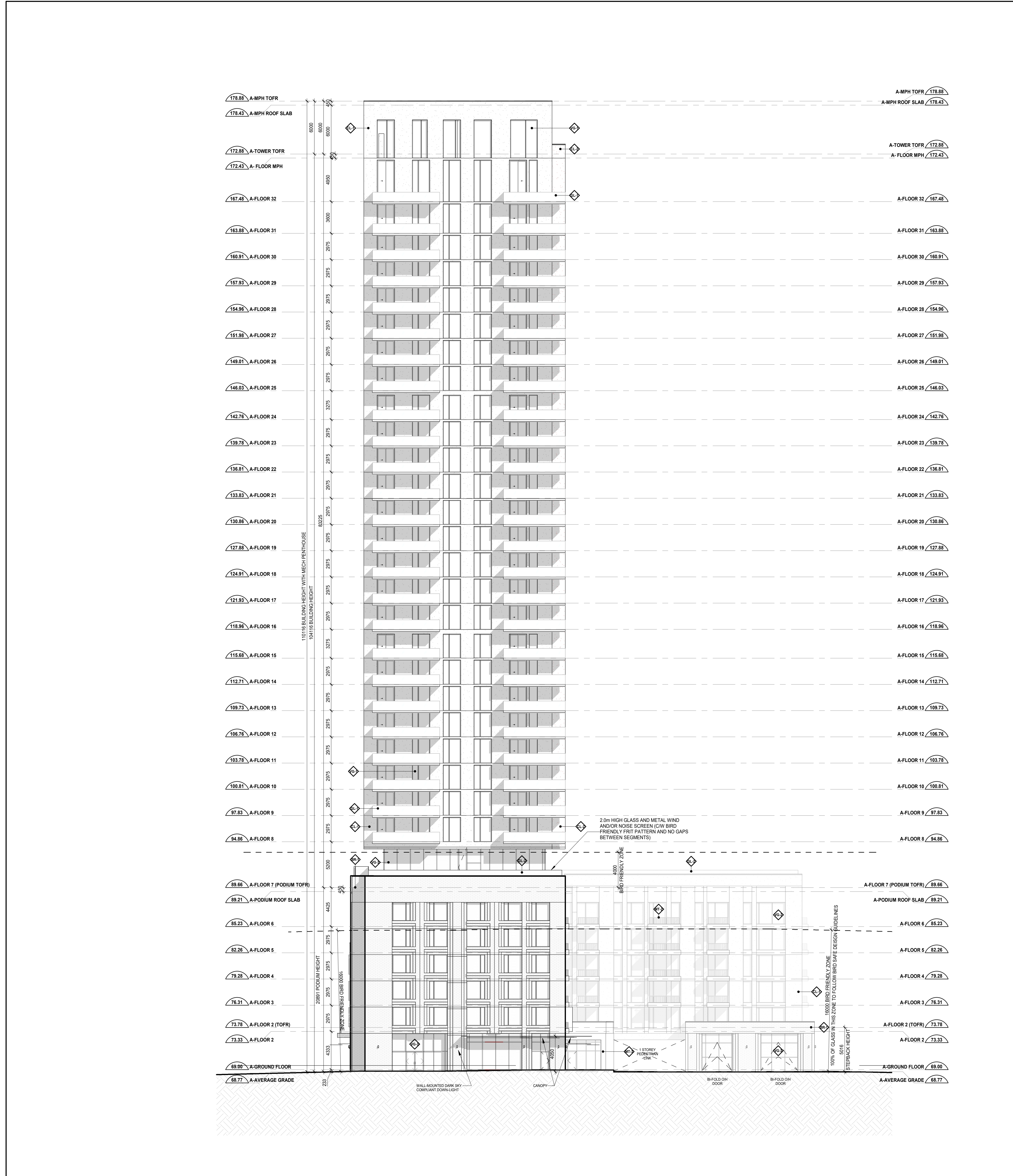




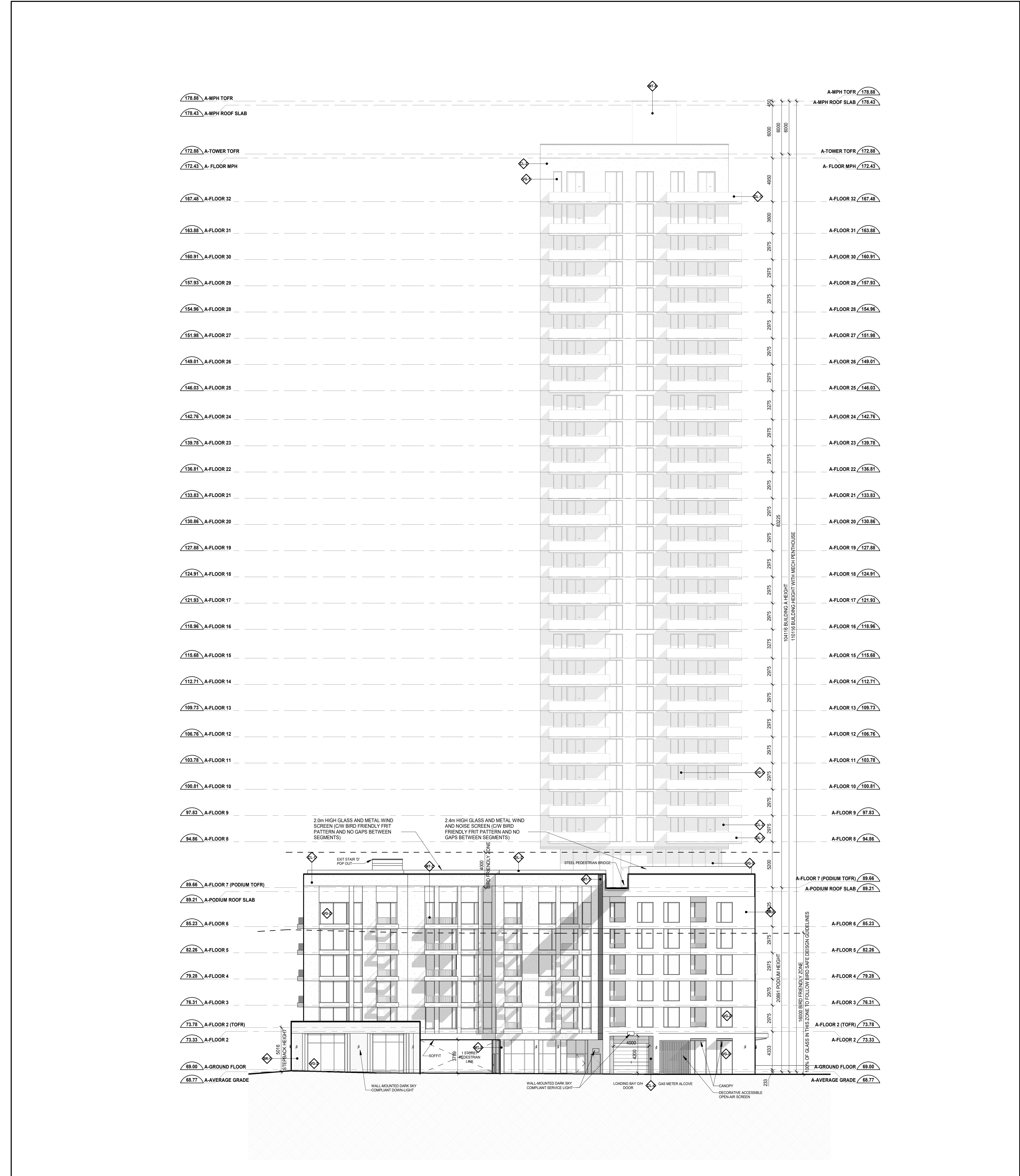
3 Building A - Pedestrian Passage - South Elevation



4 Building A - Pedestrian Passage - North Elevation



1 EAST ELEVATION



2 Building A - West Elevation

- LEGEND:**
- BRICK - COLOUR 1
  - BRICK - COLOUR 2
  - BRICK - COLOUR 3
  - BRICK - COLOUR 4
  - BRICK - COLOUR 5 (WHITE)
  - CLADDING 1 - WHITE
  - CLADDING 2 - DARK GREY
  - CLADDING 3 - OFF-WHITE
  - CLADDING 4 - TAN
  - CLADDING 5 - DARK GREY 2
  - PLATE ALUM CLADDING SYSTEM - COLOUR 1
  - BALCONY AND TERRACE RAILING HANDRAILS AND FINISHES; SUPPORT POSTS, HANDRAILS AND FINISHES
  - METAL ALUM CLADDING SYSTEM - COLOUR 2
  - METAL FLASHING AND PARAPET CAP FLASHING
  - SHEET STEEL CLADDING SYSTEM
  - BALCONY SLAB EDGE COVER
  - WINDOW SYSTEM METAL SPANDREL PROTECTING PANEL
  - WINDOW SYSTEM METAL SPANDREL FLUSH PANEL
  - WINDOW SYSTEM METAL SPANDREL RECESSED PANEL
  - RESIDENTIAL VISION GLASS - IGU
  - RESIDENTIAL VISION GLASS VIG-1 WITH BIRD FRIENDLY FRST PATTERN
  - RESIL VISION GLASS WITH BIRD FRIENDLY FRST PATTERN
  - SPANDREL GLASS - COLOUR 1
  - RAILING GLASS
  - RAILING GLASS WITH BIRD FRIENDLY FRST PATTERN
  - PRIVACY SCREEN GLASS
  - RESIDENTIAL AND STOREFRONT WINDOW SYSTEM CURVE
  - ARCHITECTURAL LOUIRE

Date	No.	Description

**REVISION RECORD**

Date	No.	Description
2024-05-23		Zoning By-Law Amendment & Site Plan Approval (Resubmission)
2024-03-15		Zoning By-Law Amendment & Site Plan Approval (Resubmission)
2023-05-15		Zoning By-Law Amendment & Site Plan Approval

**BDP. Quadrangle**

Quadrangle Architects Limited  
 1701 Hwy. 7, Suite 200, Toronto, ON M3J 1S8  
 416-598-1200 www.bdpquadrangle.com

265 Catherine Street, Ottawa

for  
 Brigil  
 DWG140911 - 001-13-20-001-SPC / D02-102-23-004-ZBA / 231-10-23-004-ZBA

21007 1:200 GZ RUL  
 PROJECT SCALE DRAWN REVIEWED

Building A Elevations

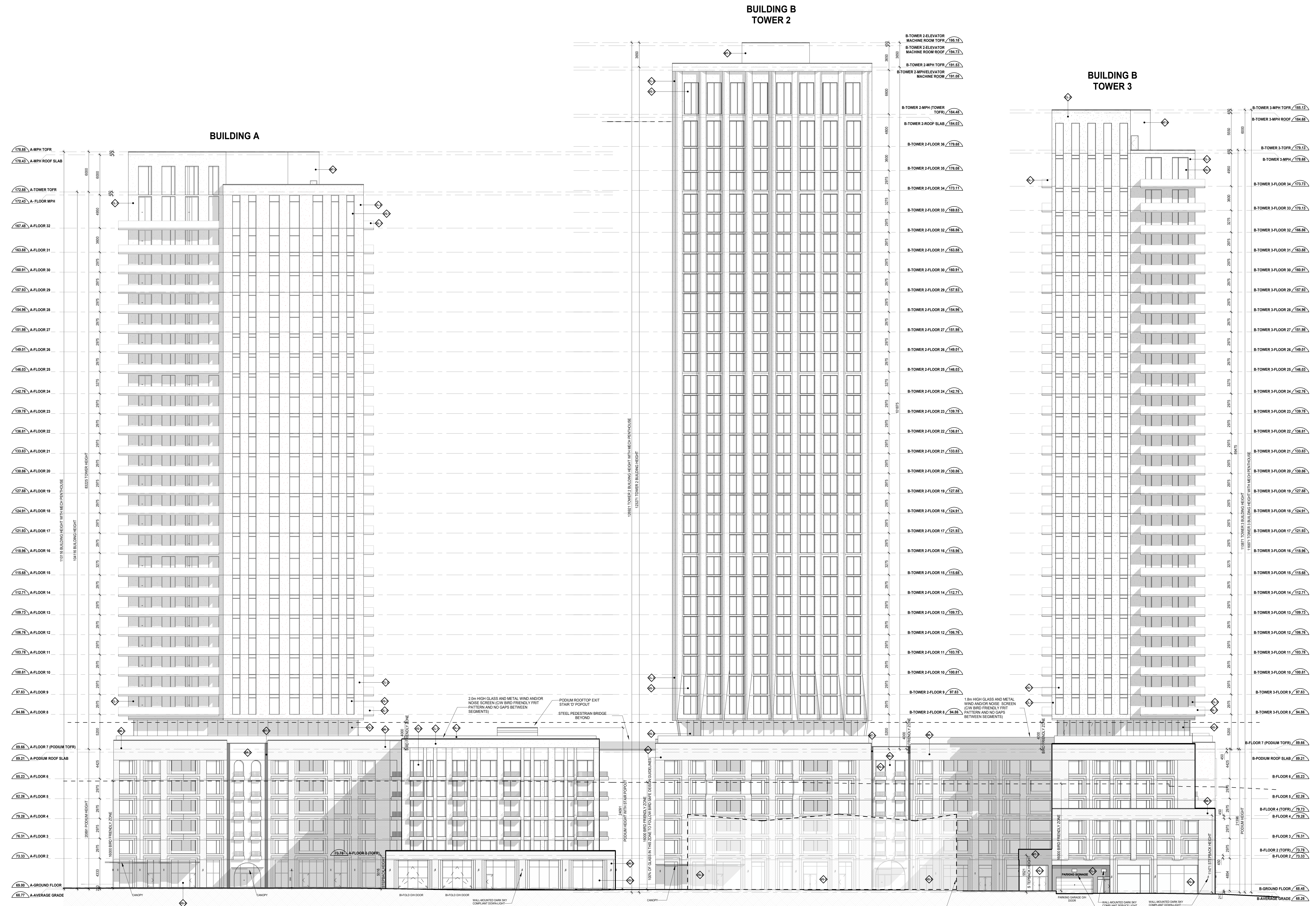
**A404.S**

Note: This drawing is the property of the Architect and may not be reproduced or used without the expressed consent of the Architect. The Contractor shall remain responsible for the A404.S and shall coordinate with the Architect.









**LEGEND:**

- BRICK - COLOUR 1
- BRICK - COLOUR 2
- BRICK - COLOUR 3
- BRICK - COLOUR 4
- BRICK - COLOUR 5 (WHITE)
- CLADDING 1 - WHITE
- CLADDING 2 - DARK GREY
- CLADDING 3 - OFF-WHITE
- CLADDING 4 - TAN
- CLADDING 5 - DARK GREY 2
- PLATE ALUM CLADDING SYSTEM - COLOUR 1
- BALCONY AND TERRACE RAILING HANDRAILS AND FINISHES: SUPPORT POSTS, HANDRAILS AND FINISHES
- METAL FLASHING AND PARAPET CAP FLASHING
- SHEET STEEL CLADDING SYSTEM
- BALCONY SLAB EDGE COVER
- WINDOW SYSTEM METAL SPANDREL PROTECTING PANEL
- WINDOW SYSTEM METAL SPANDREL FLUSH PANEL
- WINDOW SYSTEM METAL SPANDREL RECESSED PANEL
- RESIDENTIAL VISION GLASS - IGU
- RESIDENTIAL VISION GLASS V6+ WITH BIRD FRIENDLY FRST PATTERN
- RESIDENTIAL VISION GLASS WITH BIRD FRIENDLY FRST PATTERN
- SPANDREL GLASS - COLOUR 1
- RAILING GLASS
- RAILING GLASS WITH BIRD FRIENDLY FRST PATTERN
- PRIVACY SCREEN GLASS
- RESIDENTIAL AND STOREFRONT WINDOW SYSTEM CURVE
- ARCHITECTURAL LOUIRE

Date	No.	Description
2024-05-23	Zoning By-Law Amendment & Site Plan Approval (Resubmission)	
2024-03-15	Zoning By-Law Amendment & Site Plan Approval (Resubmission)	
2023-05-15	Zoning By-Law Amendment & Site Plan Approval	

**REVISION RECORD**

Date	No.	Description

**BDP.**  
**Quadrangle**

Quadrangle Architects Limited  
 700 West Beaver Creek Avenue, Suite 2100, Toronto, ON M2Y 0B8  
 T: 416 598-1240 www.bdpquadrangle.com

265 Catherine Street, Ottawa

for  
**Brigil**

DWG: 19091 - 001-13-23-0007-SPC / 002-02-23-0042-ZBA / 201-01-23-0008-CPA

21007 1:200 GZ R/JL  
 PROJECT SCALE DRAWN REVIEWED

North Elevation - No Townhouses

**A406.S**

1 Overall - North Elevation (No Townhouses)

C:\Users\jgibson\Documents\BDRP\_21007\_26 Catherine St\_2023\_CAD\BDRP\_21007\_26 Catherine St\_2023\_CAD.dwg