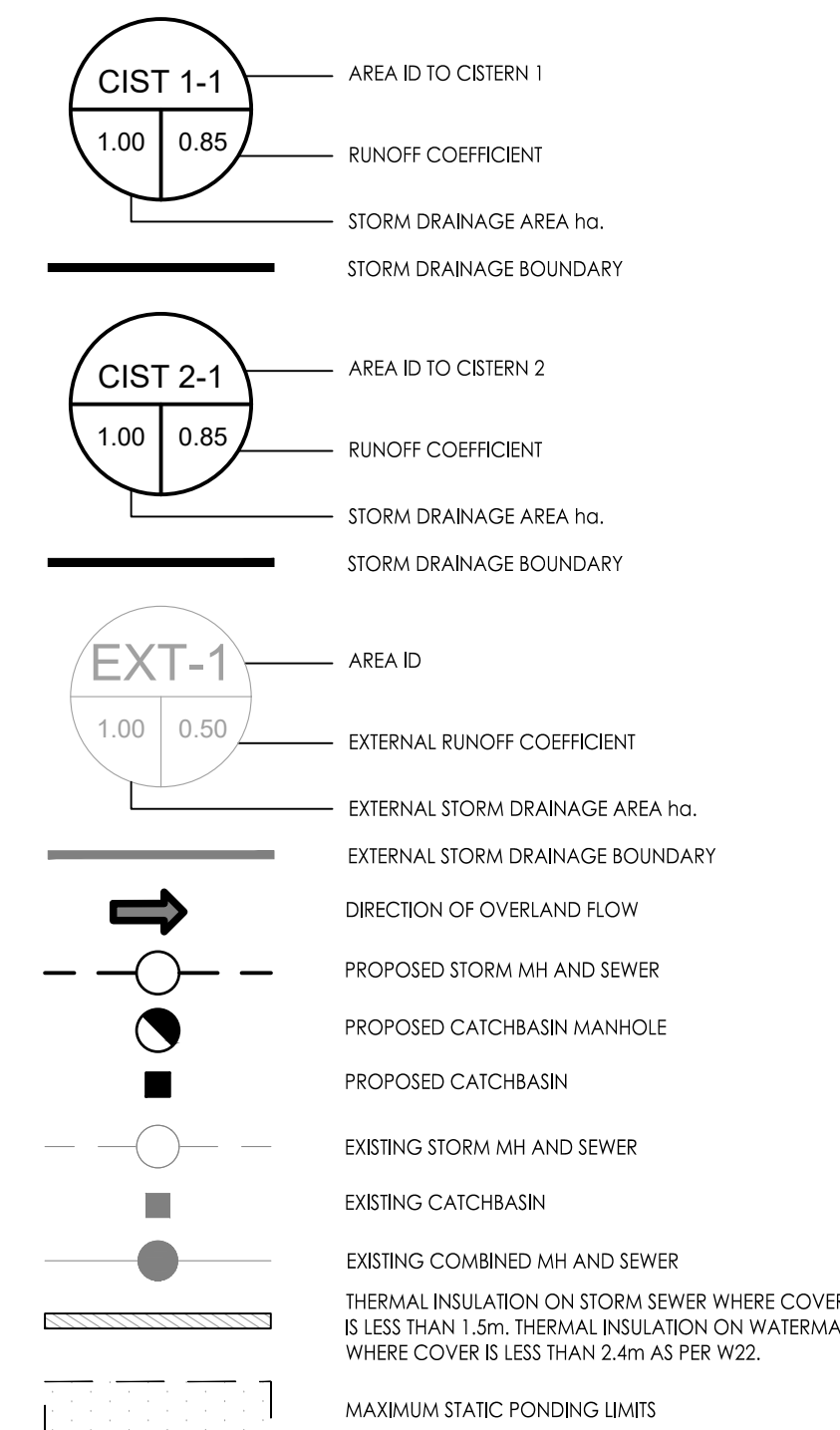


Copyright Reserved

The Contractor shall verify and be responsible for all dimensions. DO NOT scale the drawing - any errors or omissions shall be reported to Stantec without delay.  
The Copyrights to all designs and drawings are the property of Stantec. Reproduction or use for any purpose other than that authorized by Stantec is forbidden.

Legend



Notes

- ALL CATCH BASINS AND TRENCH DRAINS TO BE CONNECTED TO INTERNAL PLUMBING AND COLLECTED IN STORM WATER MANAGEMENT CISTERN. INSTALLATION BY OTHERS.
- STORMWATER MANAGEMENT TO BE PROVIDED THROUGH 2 CISTERNS. ONE CISTERN PER DEVELOPMENT PHASE.  
PHASE 1 CISTERN = 130.0m<sup>3</sup>  
PHASE 2 CISTERN = 180.0m<sup>3</sup>  
MAX. CISTERN RELEASE RATE TO STORM SEWER  
PHASE 1 CISTERN RELEASE RATE = 12.47L/s  
PHASE 2 CISTERN RELEASE RATE = 18.87L/s

Revision	Issued For	By	Appd.	YY.MM.DD
0	ISSUED FOR SPA	MJS	MF	23.05.15

Permit-Seal	Drawn	Chkd.	Dsgn.	YY.MM.DD
	MJS	DT	MJS	23.02.06

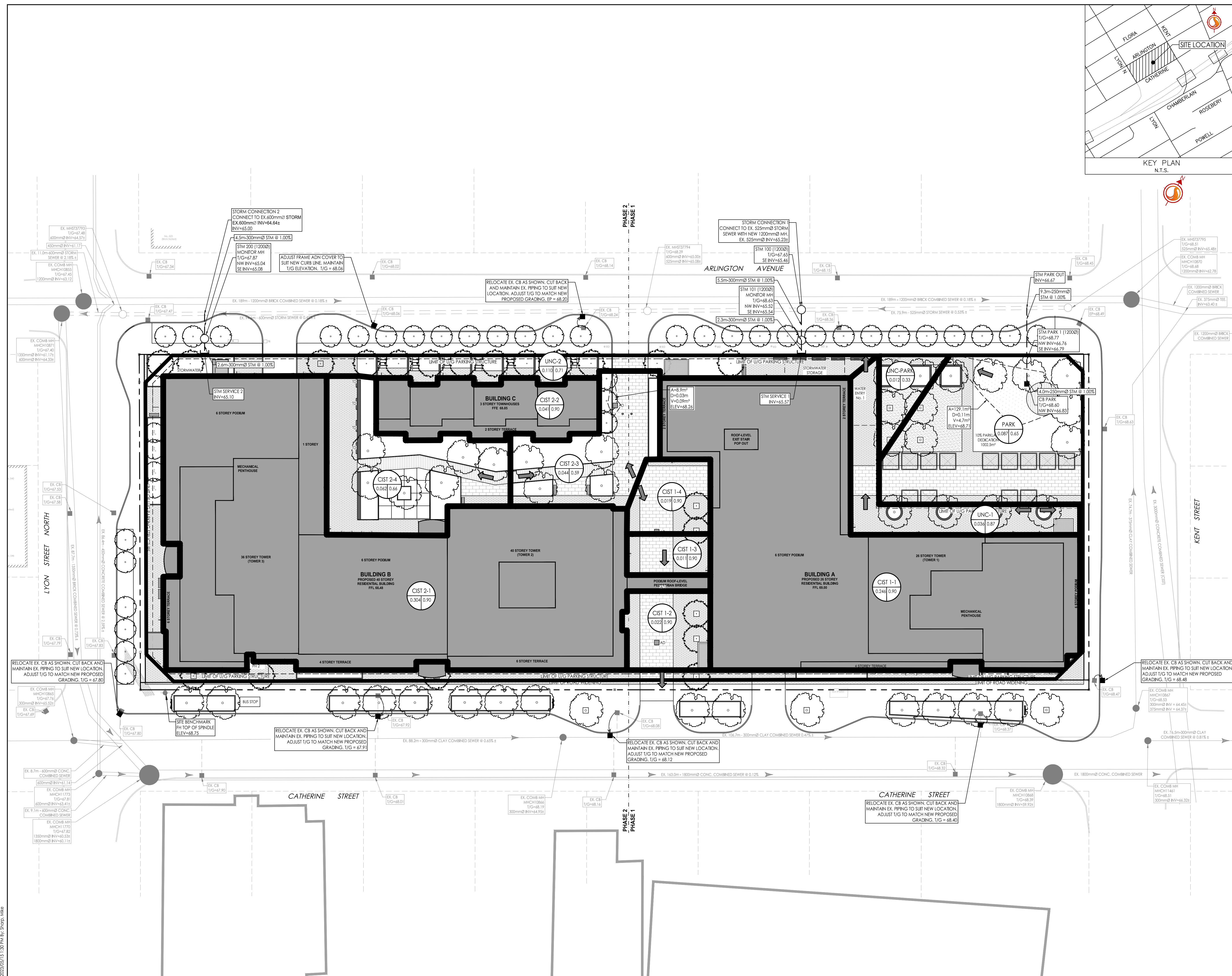


Client/Project  
**BRIGIL**

265 CATHERINE STREET  
OTTAWA, ONTARIO, CANADA

Title  
**STORM DRAINAGE PLAN**

Project No. 160401663	Scale 1:300	Sheet 6 of 7	Revision 0
--------------------------	----------------	-----------------	---------------



V:\1\160401663\160401663.dwg  
 2023/05/15 10:31 AM  
 ORIGINAL SHEET - ARCH D