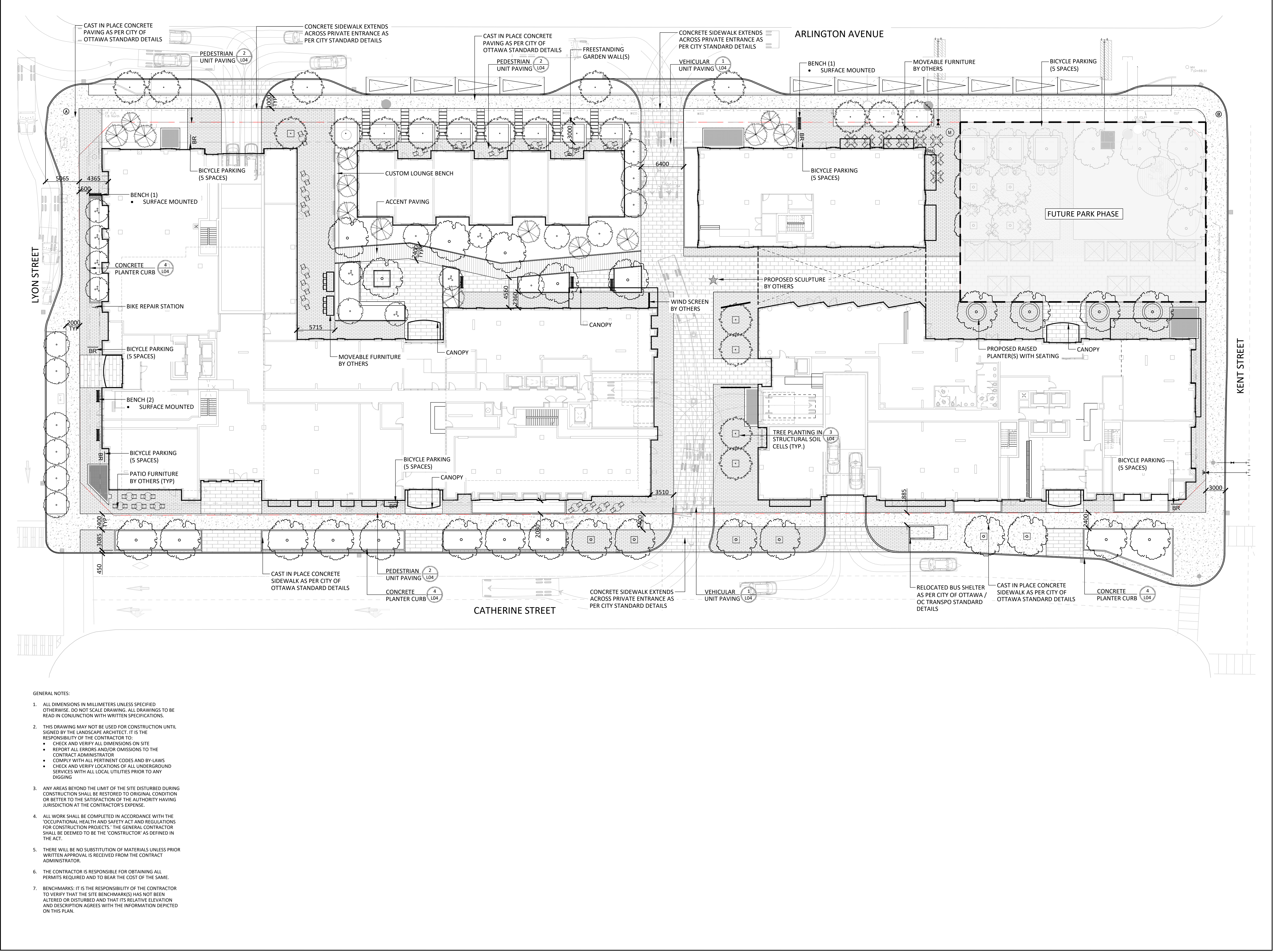


Contractor shall check all dimensions on the work and report any discrepancy to the Landscape Architect before proceeding. All drawings and specifications are the property of the Landscape Architect and must be returned at the completion of the work. This drawing is not to be used for construction until signed by the Landscape Architect.



LEGEND

--- PROPERTY LINE

PLANTING

- LARGE DECIDUOUS TREE
- MEDIUM TREE (<7m)
- SMALL TREE (<7m)
- CONIFEROUS TREE
- PLANT LIST A
- PLANT LIST B
- PLANT LIST C
- PLANT LIST D
- SOD

SURFACING

- UNIT PAVER TYPE 1
- UNIT PAVER TYPE 2
- CONCRETE PATTERN 1
- CONCRETE

PLANTING KEY

- TREE SPECIES QUANTITY
- SHRUB SPECIES QUANTITY

DETAIL KEY

- DETAIL NO. 1
- SHEET NO. D1

No.	Description	Date
4	Issued For Fourth Submission	24-09-10
3	Issued For Third Submission	24-05-23
2	Issued For Second Submission	24-03-14
1	Issued For Site Plan Approval	23-05-15
Revision		
City Approval Stamp		

- GENERAL NOTES:**
- ALL DIMENSIONS IN MILLIMETERS UNLESS SPECIFIED OTHERWISE. DO NOT SCALE DRAWINGS. ALL DRAWINGS TO BE READ IN CONJUNCTION WITH WRITTEN SPECIFICATIONS.
 - THIS DRAWING MAY NOT BE USED FOR CONSTRUCTION UNTIL SIGNED BY THE LANDSCAPE ARCHITECT. IT IS THE RESPONSIBILITY OF THE CONTRACTOR TO:
 - CHECK AND VERIFY ALL DIMENSIONS ON SITE
 - REPORT ALL ERRORS AND/OR OMISSIONS TO THE CONTRACT ADMINISTRATOR
 - COMPLY WITH ALL PERTINENT CODES AND BY-LAWS
 - CHECK AND VERIFY LOCATIONS OF ALL UNDERGROUND SERVICES WITH ALL LOCAL UTILITIES PRIOR TO ANY DIGGING
 - ANY AREAS BEYOND THE LIMIT OF THE SITE DISTURBED DURING CONSTRUCTION SHALL BE RESTORED TO ORIGINAL CONDITION OR BETTER TO THE SATISFACTION OF THE AUTHORITY HAVING JURISDICTION AT THE CONTRACTOR'S EXPENSE.
 - ALL WORK SHALL BE COMPLETED IN ACCORDANCE WITH THE 'OCCUPATIONAL HEALTH AND SAFETY ACT AND REGULATIONS FOR CONSTRUCTION PROJECTS'. THE GENERAL CONTRACTOR SHALL BE DEEMED TO BE THE 'CONSTRUCTOR' AS DEFINED IN THE ACT.
 - THERE WILL BE NO SUBSTITUTION OF MATERIALS UNLESS PRIOR WRITTEN APPROVAL IS RECEIVED FROM THE CONTRACT ADMINISTRATOR.
 - THE CONTRACTOR IS RESPONSIBLE FOR OBTAINING ALL PERMITS REQUIRED AND TO BEAR THE COST OF THE SAME.
 - BENCHMARKS: IT IS THE RESPONSIBILITY OF THE CONTRACTOR TO VERIFY THAT THE SITE BENCHMARK(S) HAS NOT BEEN ALTERED OR DISTURBED AND THAT ITS RELATIVE ELEVATION AND DESCRIPTION AGREES WITH THE INFORMATION DEPICTED ON THIS PLAN.

NAK
design strategies

1285 WELLINGTON STREET, OTTAWA, ON K1Y 3A8 CANADA
T 613.237.2345 NAKDESIGNSTRATEGIES.COM
Project

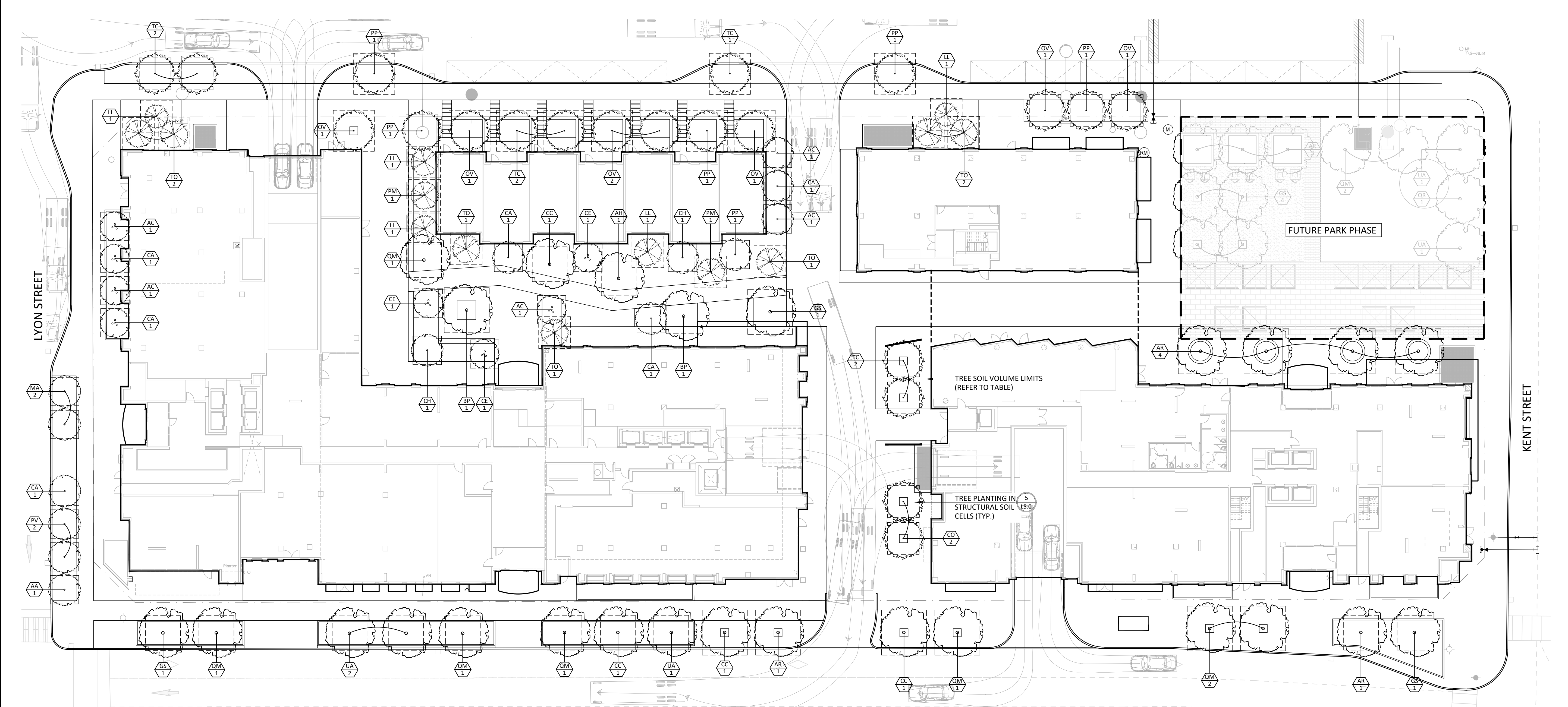
265 CATHERINE STREET
OTTAWA ONTARIO

Title

LAYOUT PLAN
GROUND FLOOR

Date	Scale	Drawn	Checked	Job No.	Sheet
2023-02-03	1:250	JC/IE	SC	23-015	L01

Contractor shall check all dimensions on the work and report any discrepancy to the Landscape Architect before proceeding. All drawings and specifications are the property of the Landscape Architect and must be returned at the completion of the work. This drawing is not to be used for construction until signed by the Landscape Architect.



LEGEND

--- PROPERTY LINE

PLANTING

- LARGE DECIDUOUS TREE
- MEDIUM TREE (<7m)
- SMALL TREE (<7m)
- CONIFEROUS TREE
- PLANT LIST A
- PLANT LIST B
- PLANT LIST C
- PLANT LIST D
- SOD

SURFACING

- UNIT PAVER TYPE 1
- UNIT PAVER TYPE 2
- CONCRETE PATTERN 1
- CONCRETE

PLANTING KEY

- TREE SPECIES QUANTITY
- SHRUB SPECIES QUANTITY

DETAIL KEY

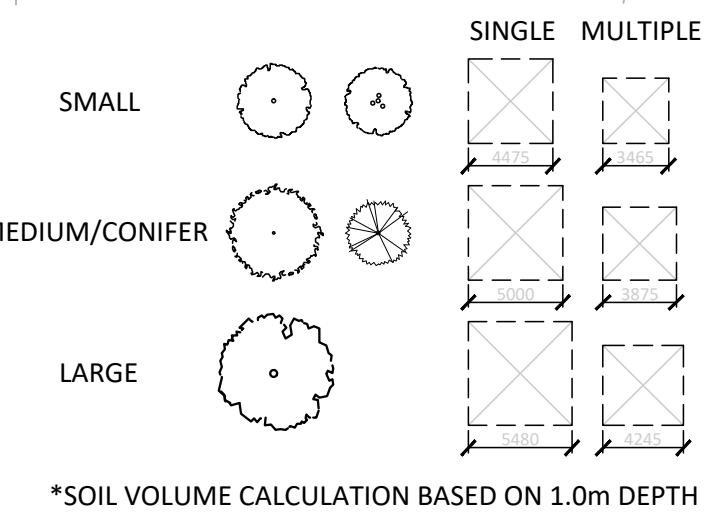
- DETAIL NO.
- SHEET NO.

4	Issued For Fourth Submission	24-09-10
3	Issued For Third Submission	24-05-23
2	Issued For Second Submission	24-03-14
1	Issued for Site Plan Approval	23-05-15
No.	Description	Date

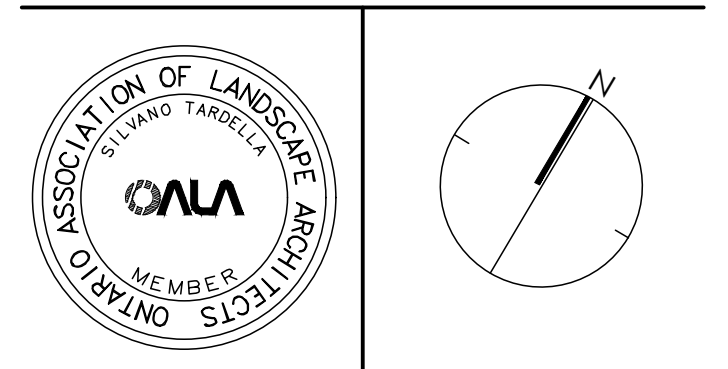
KEY	BOTANICAL NAME	COMMON NAME	QUANTITY	SIZE	REMARKS
CANOPY PLANTING PALETTE					
DECIDUOUS TREES - 60mm					
AH	AESCULUS HIPPOCASTANUM	HORSECHESNUT TREE	1	60mm	B&B
AR	ACER RUBRUM	RED MAPLE	6	60mm	B&B
CC	CARYA CORDIFORMIS	BITTERNUT HICKORY	4	60mm	B&B
CO	CELTIS OCCIDENTALIS	COMMON HACKBERRY	2	60mm	B&B
GS	GLEDITSIA TRIACANTHOS VAR. INERMIS	HONEYLOCUST	3	60mm	B&B
QM	QUERCUS MACROCARPA	BUR OAK	6	60mm	B&B
TC	TILIA CORDATA CORINTHIAN	CORINTHIAN LINDEN	7	60mm	B&B
UA	ULMUS AMERICANA "VALLEY FORGE"	VALLEY FORGE ELM	3	60mm	B&B
BP	BETULA PAPPYRIFERA	PAPER BIRCH	2	60mm	B&B
DECIDUOUS TREES - 40mm					
AC	AMELANCHIER CANADENSIS	SERVICEBERRY	5	40mm	B&B
CE	CERCIS CANADENSIS	EASTERN REDBUD	3	40mm	B&B
PP	PRUNUS PENNSYLVANICA	PIN CHERRY	6	40mm	B&B
CA	CORNUS ALTERNIFOLIA	ALTERNATE LEAVED DOGWOOD	6	40mm	B&B
PV	PRUNUS VIRGINIANA	CHOKECHERRY	2	40mm	B&B
AA	AMELANCHIER ALNIFOLIA	SASKATOON BERRY	1	40mm	B&B
MA	MALUS SPP	CRAB APPLES	2	40mm	B&B
CH	CARPINUS CAROLINIANA	HORNBEAM	2	40mm	B&B
OV	OSTRYA VIRGINIANA	IRONWOOD	7	40mm	B&B
CONIFEROUS TREES					
LL	LARIX LARICINA (M)	TAMARACK	5	180cm	B&B
TO	THUJA OCCIDENTALIS (M)	EASTERN WHITE CEDAR	7	180cm	B&B
PM	PICEA MARIANA (M)	BLACK SPRUCE	2	180cm	B&B

SOIL VOLUME STANDARDS

TREE TYPE/SIZE	SINGLE TREE SOIL VOLUME (m3)	MULTIPLE TREE SOIL VOLUME (m3/TREE)
ORNAMENTAL	15	9
COLUMNAR	15	9
SMALL	20	12
MEDIUM	25	15
LARGE	30	18
CONIFER	25	15



CATHERINE STREET



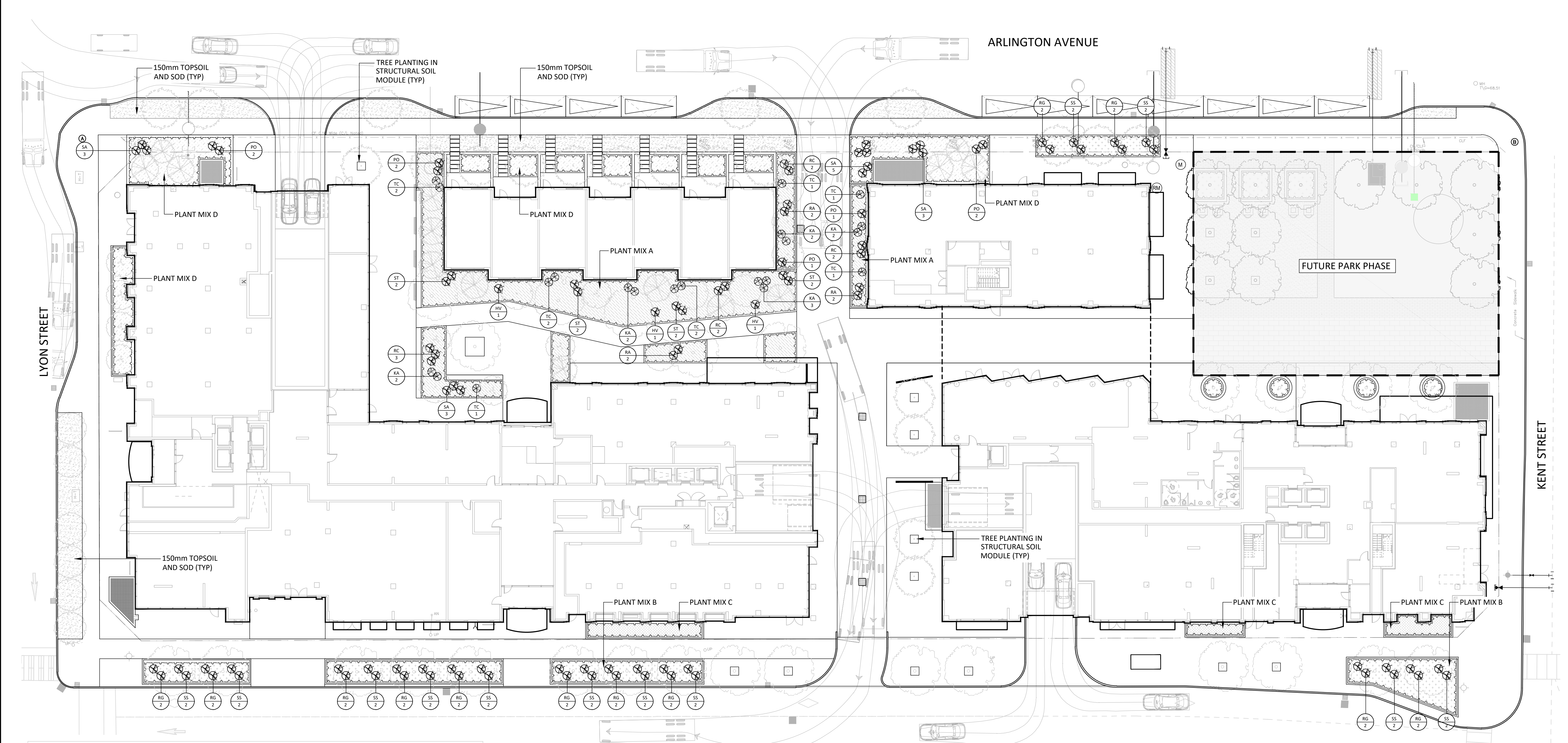
NAK
design strategies

1285 WELLINGTON STREET, OTTAWA, ON K1Y 3A8 CANADA
T 613.237.2345 NAKDESIGNSTRATEGIES.COM

265 CATHERINE STREET
OTTAWA ONTARIO

Title	CANOPY PLANTING PLAN GROUND FLOOR	
Date	2023-02-03	Sheet
Scale	1:250	L02
Drawn	JC/IE	
Checked	SC	
Job No.	23-015	

Contractor shall check all dimensions on the work and report any discrepancy to the Landscape Architect before proceeding. All drawings and specifications are the property of the Landscape Architect and must be returned at the completion of the work. This drawing is not to be used for construction until signed by the Landscape Architect.



LEGEND

- PROPERTY LINE
- PLANTING**
- LARGE DECIDUOUS TREE
- MEDIUM TREE (<7m)
- SMALL TREE (<7m)
- CONIFEROUS TREE
- PLANT LIST A
- PLANT LIST B
- PLANT LIST C
- PLANT LIST D
- SOD
- SURFACING**
- UNIT PAVER TYPE 1
- UNIT PAVER TYPE 2
- CONCRETE PATTERN 1
- CONCRETE
- PLANTING KEY**
- TREE SPECIES QUANTITY
- SHRUB SPECIES QUANTITY
- DETAIL KEY**
- DETAIL NO. 1
- SHEET NO. 01

No.	Description	Date
4	Issued For Fourth Submission	24-09-10
3	Issued For Third Submission	24-05-23
2	Issued For Second Submission	24-03-14
1	Issued for Site Plan Approval	23-05-15
Revision		
City Approval Stamp		

PLANT LIST

KEY	BOTANICAL NAME	COMMON NAME	QUANTITY	SIZE	REMARKS
SHRUB AND PERENNIAL PLANTING PALETTE - AMENITY AREA (PART SUN/PART SHADE/SHADE) - MIX A (370m2)					
SHRUBS					
RA	RIBES AUREUM	GOLDEN CURRANT	6	3 GAL.	POTTED
SA	SPIRAEA ALBA	MEADOWSWEET	3	3 GAL.	POTTED
ST	SPIRAEA TOMENTOSA	STEEPLEBUSH	8	3 GAL.	POTTED
PO	PHYSOCARPUS OPULIFOLIUS 'DIABLO'	EASTERN NINEBARK	4	3 GAL.	POTTED
HV	HAMMELIS VIRGINIANA	WITCHHAZEL	3	3 GAL.	POTTED
RC	RHODODENDRON CANADENSE	CANADIAN RHODODENDRON	9	3 GAL.	POTTED
KA	KALMIA ANGUSTIFOLIA	SHEEP LAUREL	11	3 GAL.	POTTED
TC	TAXUS CANADENSIS	CANADA YEW	10	3 GAL.	POTTED
PERENNIALS					
CC	CORNUS CANADENSIS	BUNCHBERRY	284	1 GAL.	POTTED
CP	COMPTONIA PEREGRINA	SWEETFERN	284	1 GAL.	POTTED
GM	GERANIUM MACULATUM	WILD GERANIUM	284	1 GAL.	POTTED
GP	GAULTHERIA PROCUMBENS	WINTERGREEN	284	1 GAL.	POTTED
SR	MAIANTHEMUM RACEMOSUM	FALSE SOLOMANS SEAL	284	1 GAL.	POTTED
SC	SYMPHYOTRICHUM CORDIFOLIUM (M)	HEART-LEAVED ASTER	284	1 GAL.	POTTED
OC	OSMUNDA CINNAMOMEA	CINNAMON FERN	284	1 GAL.	POTTED
SR	MAIANTHEMUM RACEMOSUM	FALSE SOLOMANS SEAL	284	1 GAL.	POTTED
AQ	AQUILEGIA CANADENSIS (M)	WILD COLUMBINE	284	1 GAL.	POTTED
AC	ANEMONE CANADENSIS (M)	CANADA ANEMONE	284	1 GAL.	POTTED
AF	ATHYRIUM FILIX-FEMINA	LADY FERN	284	1 GAL.	POTTED
AF	CAREX PENNSYLVANICA	OAK SEDGE	288	1 GAL.	POTTED
AF	CAREX APPALACHICA	APPALACHIAN SEDGE	288	1 GAL.	POTTED

CATHERINE STREET

PLANT LIST

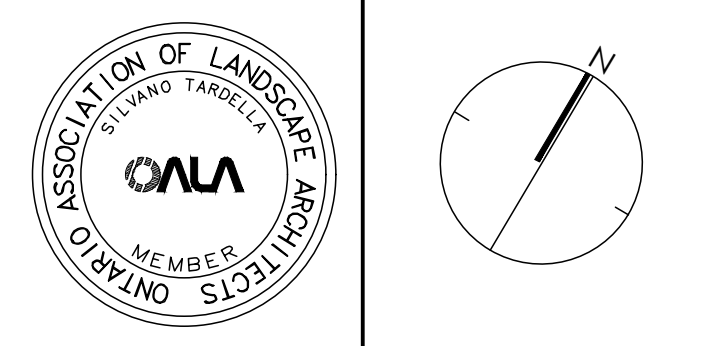
KEY	BOTANICAL NAME	COMMON NAME	QUANTITY	SIZE	REMARKS
PERENNIAL PLANTING PALETTE - BUILDING PLANTERS (FULL SUN) - MIX B (182m2)					
PERENNIALS					
BC	BOUTELOUA CURTIPENDULA	SIDEOTS GRAMA	227	1 GAL.	POTTED
MF	MONARDA FITULOSA	WILD BERGAMOT	227	1 GAL.	POTTED
SH	SPOROBOLUS HETEROLEPIS	PRAIRIE DROPSEED	227	1 GAL.	POTTED
RH	RUDBEKIA HIRTA	BLACK EYED SUSAN	227	1 GAL.	POTTED
AL	ARTEMISIA LUDOVICIANA	SAGEBRUSH	227	1 GAL.	POTTED
EP	ECHINACEA PURPUREA	PURPLE CONEFLOWER	227	1 GAL.	POTTED
SC	SCHIZACHYRIUM SCOPARIUM	LITTLE BLUESTEM	231	1 GAL.	POTTED
CL	COREOPSIS LANCEOLATA	LANCELEAF TICK-SEED	227	1 GAL.	POTTED

PLANT LIST

KEY	BOTANICAL NAME	COMMON NAME	QUANTITY	SIZE	REMARKS
SHRUB & PERENNIAL PLANTING - ROW (FULL SUN) - MIX C (45m2)					
PERENNIALS					
RG	RHUS AROMATICA GRO-LOW	GRO-LOW SUMAC	24	3 GAL.	POTTED
SS	SORBARIA SORBIFOLIA SEM	SEM FALSE SPIRAEA	24	3 GAL.	POTTED
SH	SPOROBOLUS HETEROLEPIS	PRAIRIE DROPSEED	225	1 GAL.	POTTED
BC	BOUTELOUA CURTIPENDULA	SIDEOTS GRAMA	225	1 GAL.	POTTED

PLANT LIST

KEY	BOTANICAL NAME	COMMON NAME	QUANTITY	SIZE	REMARKS
SHRUB AND PERENNIAL PLANTING PALETTE - BUILDING PLANTERS (PART SUN/PART SHADE/SHADE) - MIX D (224m2)					
SHRUBS					
SA	SPIRAEA ALBA	MEADOWSWEET	8	3 GAL.	POTTED
PO	PHYSOCARPUS OPULIFOLIUS 'DIABLO'	EASTERN NINEBARK	4	3 GAL.	POTTED
PERENNIALS					
AC	ANEMONE CANADENSIS (M)	CANADA ANEMONE	560	1 GAL.	POTTED
AF	ATHYRIUM FILIX-FEMINA	LADY FERN	560	1 GAL.	POTTED
AF	CAREX PENNSYLVANICA	OAK SEDGE	560	1 GAL.	POTTED
AF	CAREX APPALACHICA	APPALACHIAN SEDGE	560	1 GAL.	POTTED

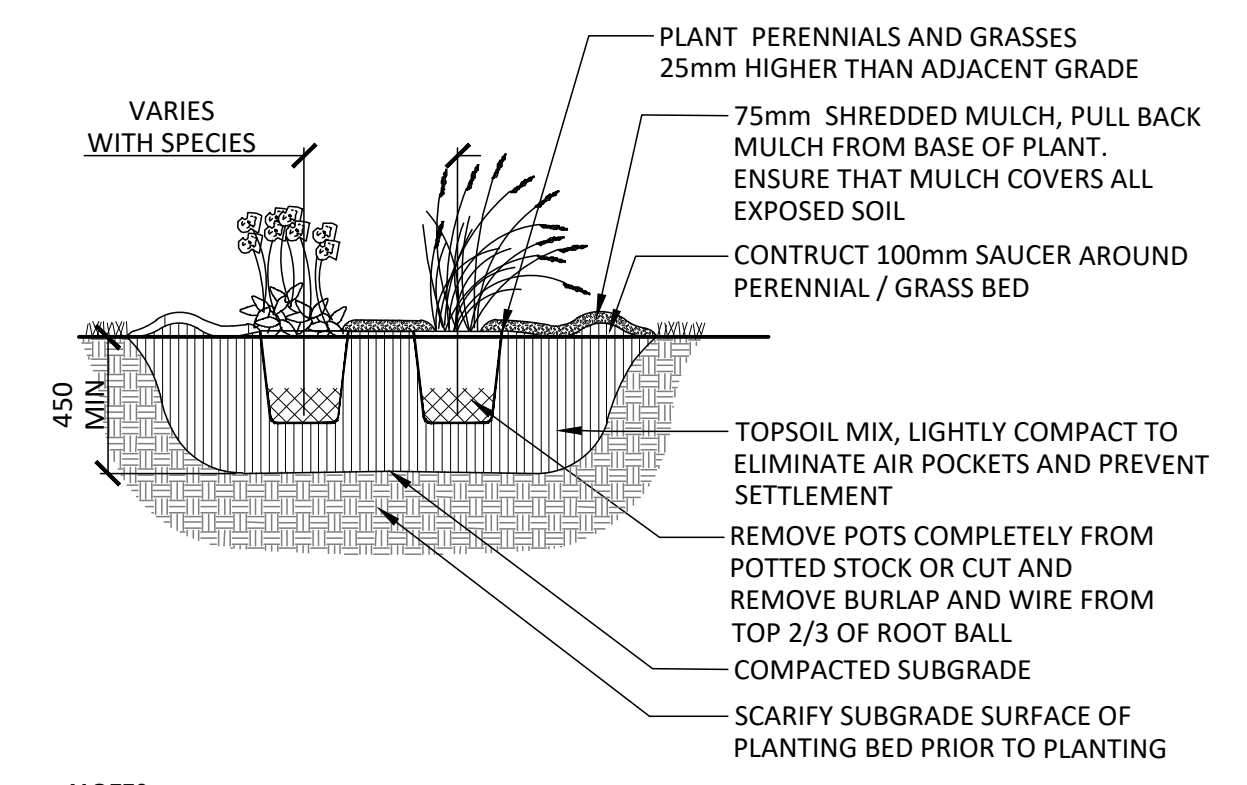
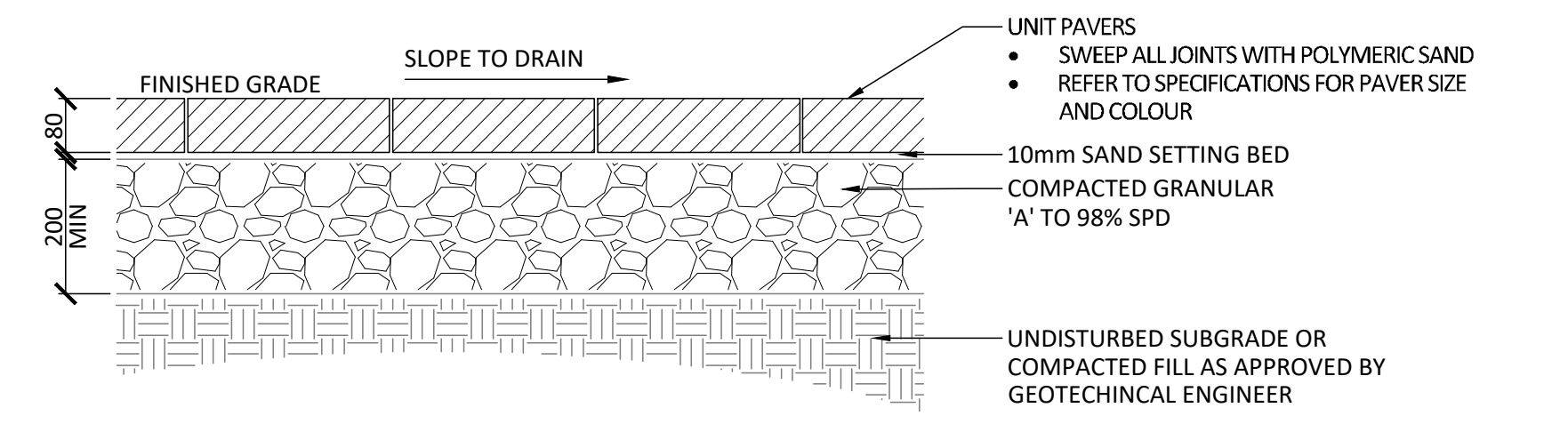
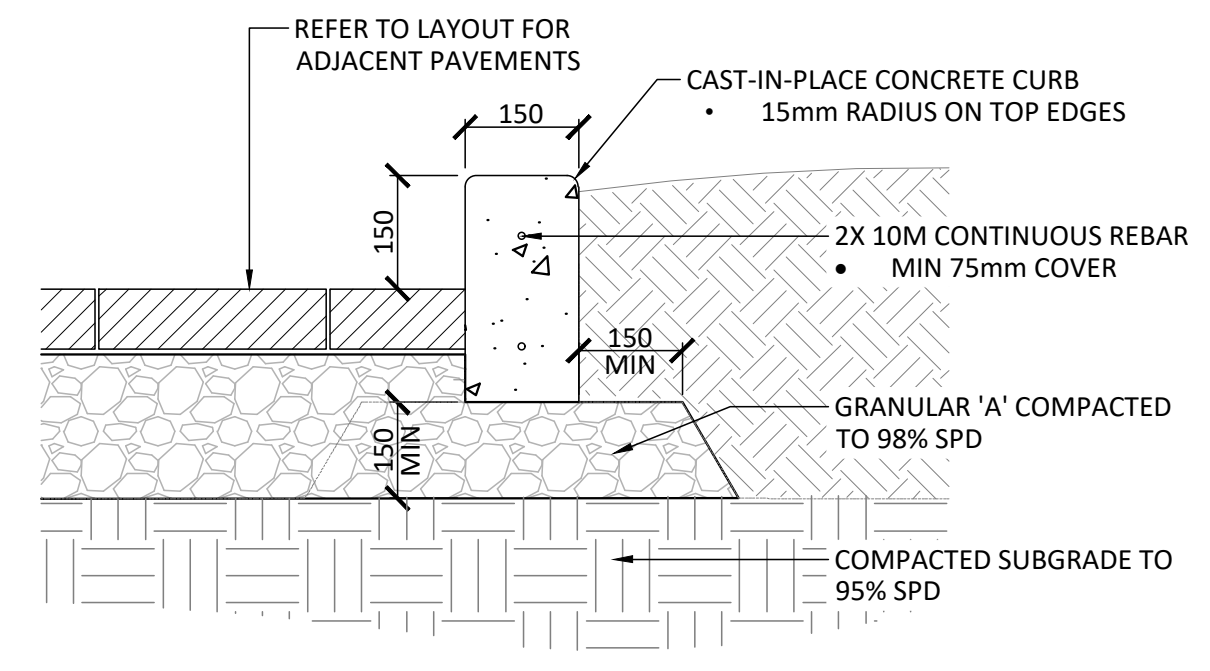
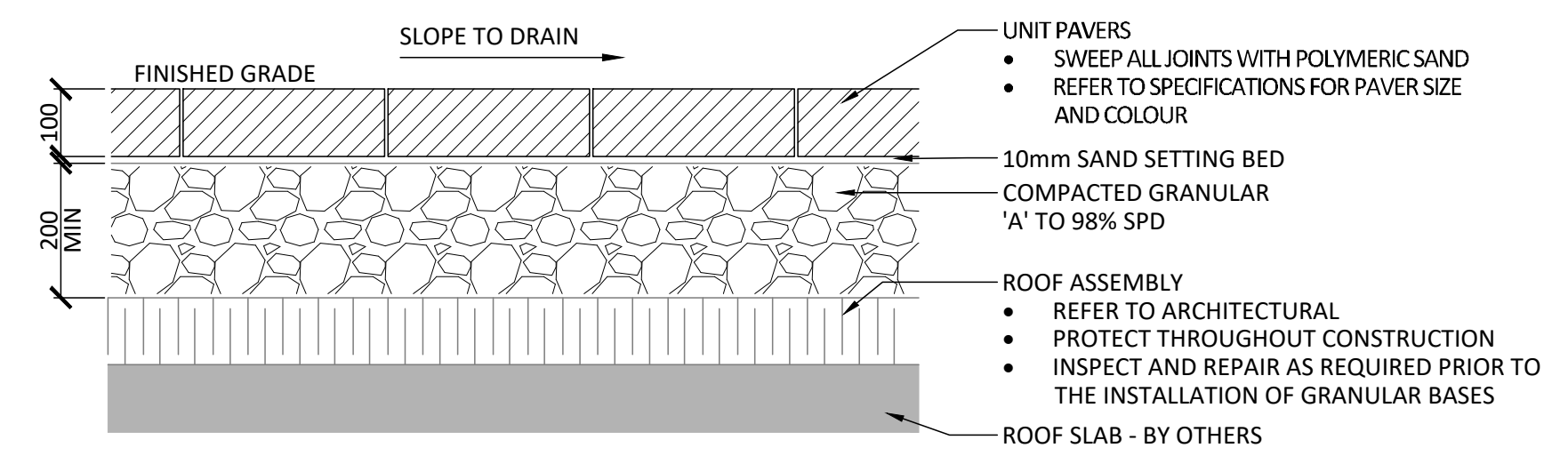


NAK
design strategies
1285 WELLINGTON STREET, OTTAWA, ON K1Y 3A8 CANADA
T 613.237.2345
Project

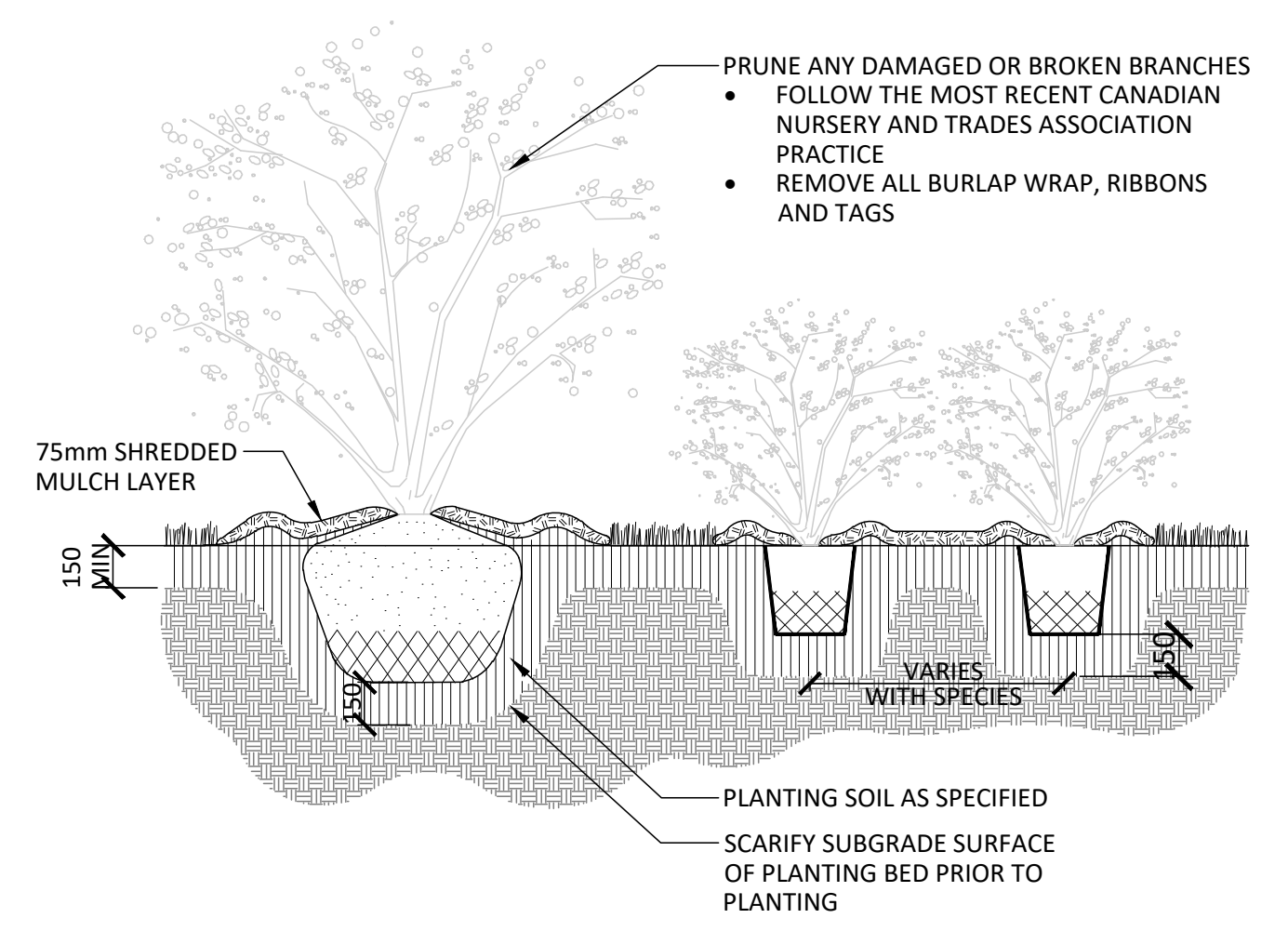
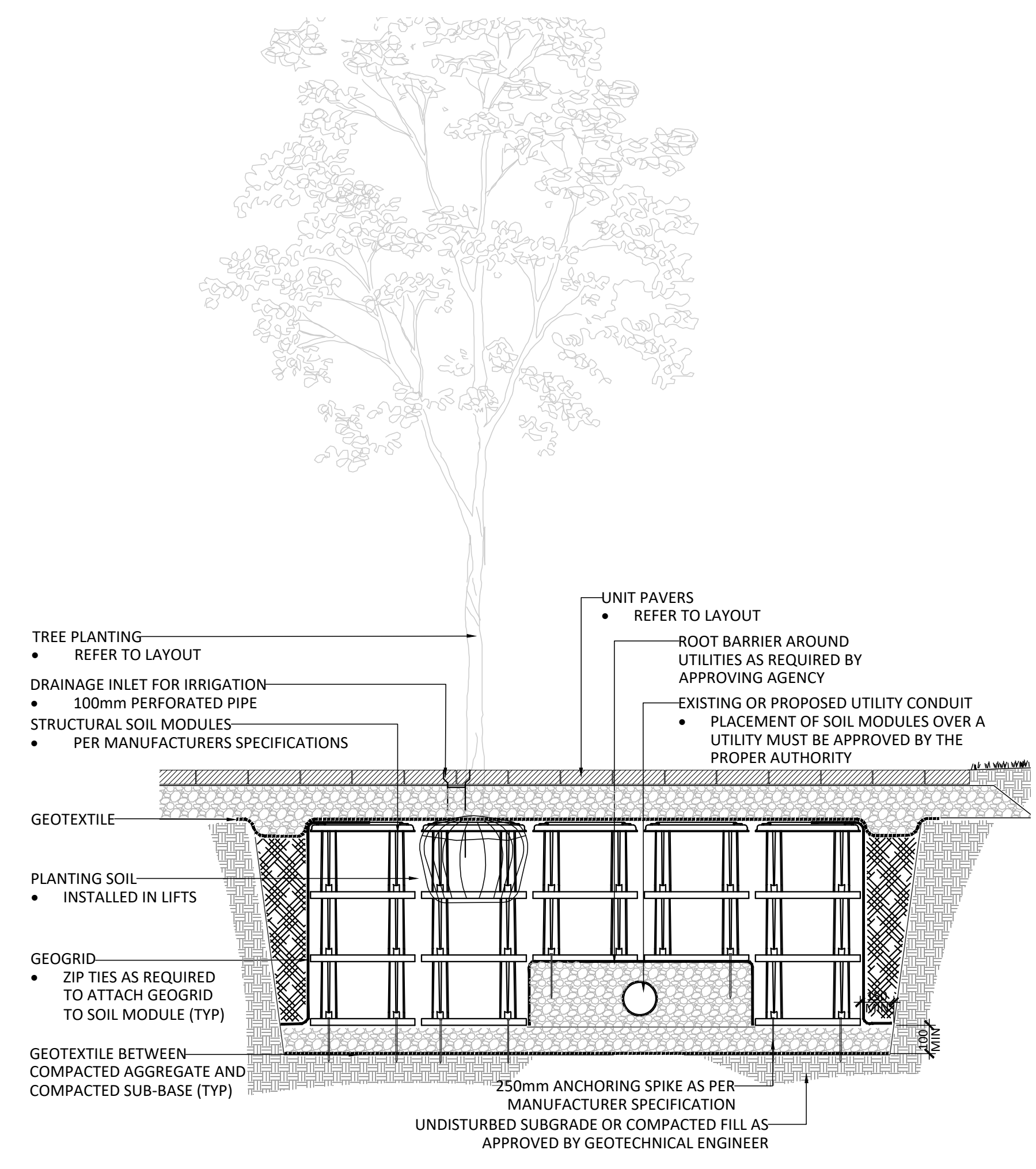
265 CATHERINE STREET
OTTAWA ONTARIO

Title		L03
SHRUB & PERENNIAL PLANTING PLAN GROUND FLOOR		
Date	2023-02-03	
Scale	1:250	
Drawn	JC/IE	
Checked	SC	
Job No.	23-015	

Contractor shall check all dimensions on the work and report any discrepancy to the Landscape Architect before proceeding. All drawings and specifications are the property of the Landscape Architect and must be returned at the completion of the work. This drawing is not to be used for construction until signed by the Landscape Architect.



NOTES:
1. TOPSOIL MIXTURE AND SHREDDED MULCH AS PER SPECIFICATION.
2. PROVIDE 100mm HIGH EARTH SAUCER AROUND PERENNIAL/GRASS BED.



NOTES:
1. SHRUBS SPECIFIED TO BE PLANTED SO THAT ROOTS ARE FULLY EXTENDED IN PLANTING HOLE WITH SOIL MIX BACKFILLED CAREFULLY TO PREVENT ROOT DAMAGE
2. PROVIDE 100mm HIGH EARTH SAUCER AROUND SHRUB BED

-		
-		
-		
4	Issued for Fourth Submission	24-09-10
3	Issued for Third Submission	24-05-23
2	Issued for Second Submission	24-05-06
1	Issued for Site Plan Approval	23-05-15
No.	Description	Date
Revision		
City Approval Stamp		

ASSOCIATION OF LANDSCAPE ARCHITECTS ONTARIO
SILVANO TAMBELLA
MEMBER
NAK design strategies
1285 WELLINGTON STREET, OTTAWA, ON K1Y 3A8 CANADA
T 613.237.2345
NAKDESIGNSTRATEGIES.COM
Project

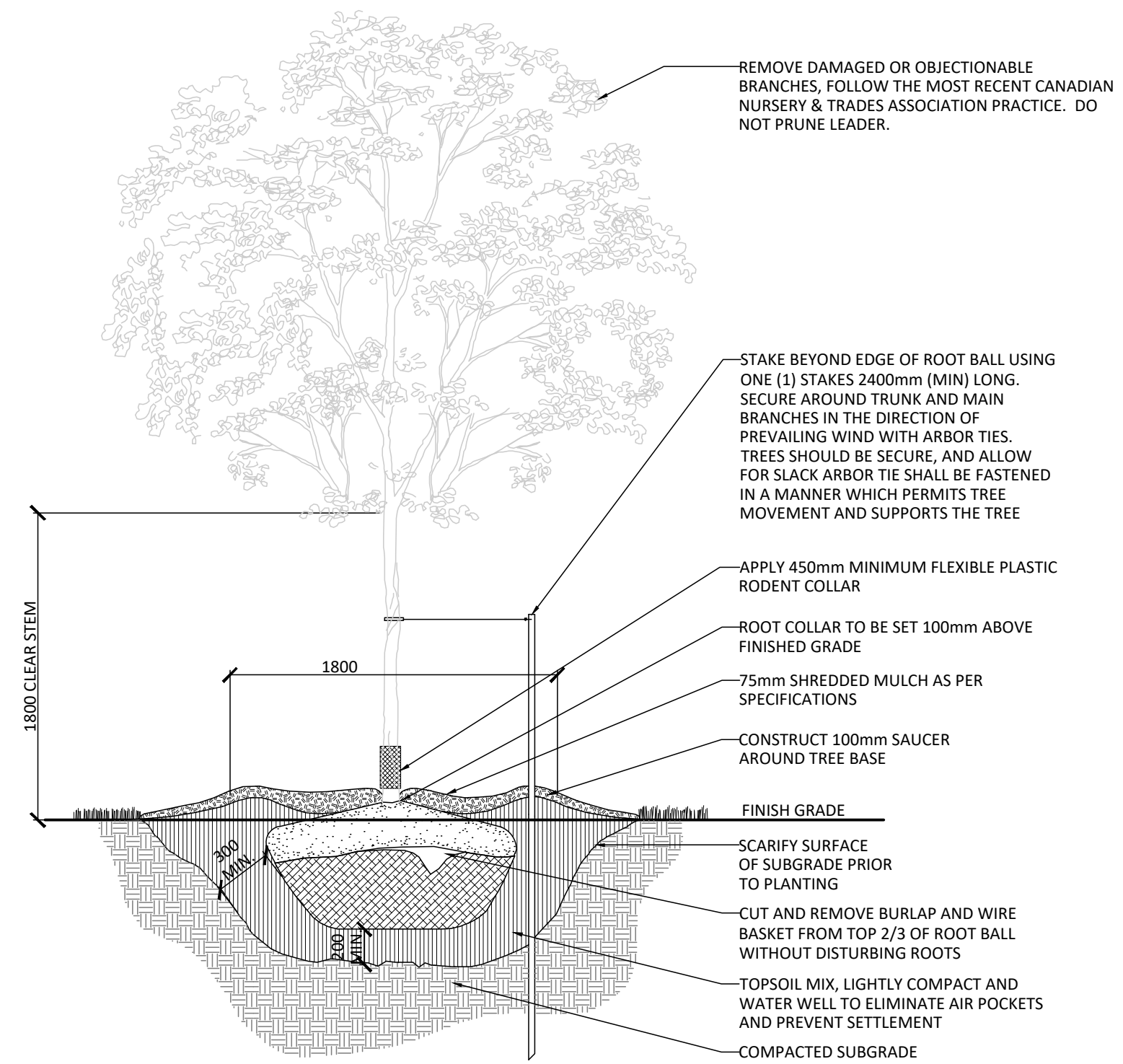
256 CATHERINE STREET
OTTAWA ONTARIO

Title
DETAILS

Date	2023-02-03	Sheet
Scale	AS SHOWN	
Drawn	JE/MM	
Checked	SC	
Job No.	23-015	

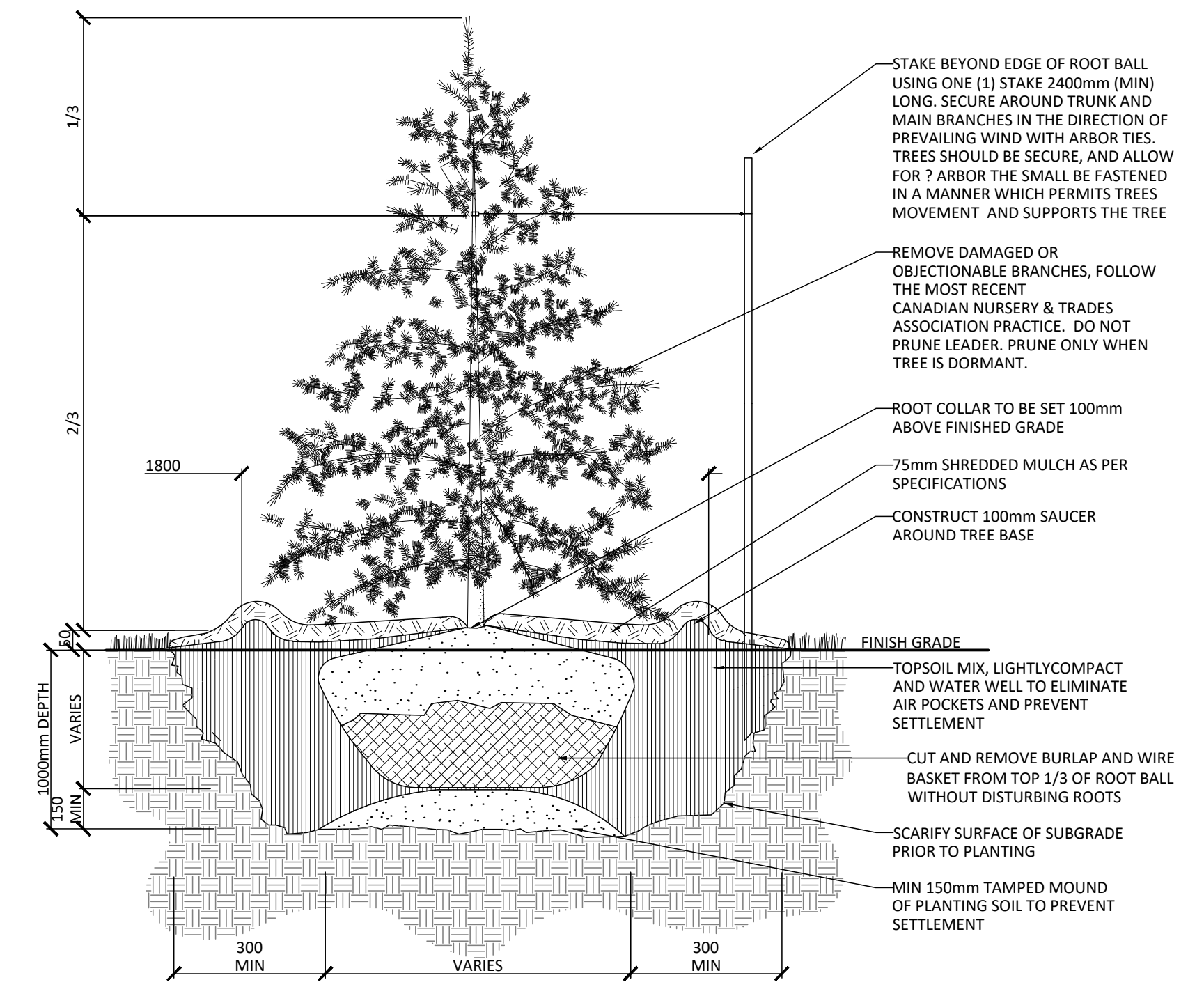
L05

Contractor shall check all dimensions on the work and report any discrepancy to the Landscape Architect before proceeding. All drawings and specifications are the property of the Landscape Architect and must be returned at the completion of the work. This drawing is not to be used for construction until signed by the Landscape Architect.



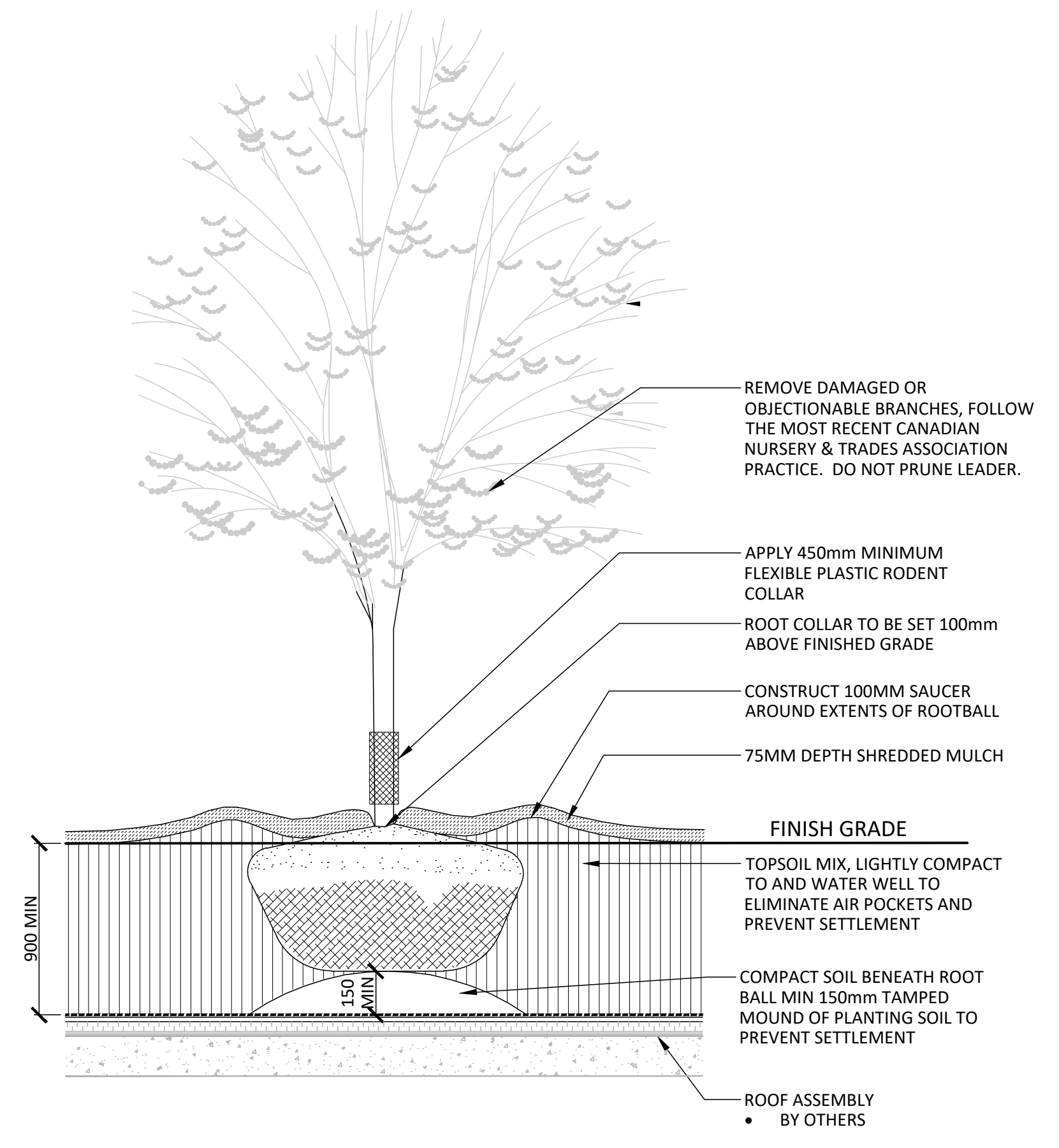
- NOTES:
1. REMOVE STAKE AFTER ONE YEAR OR UNTIL TAKEOVER, UNLESS OTHERWISE DIRECTED BY THE LANDSCAPE ARCHITECT.
 2. TOPSOIL MIXTURE AND SHREDDED MULCH AS PER SPECIFICATION
 3. REMOVE TREE WRAP AFTER PLANTING
 4. CALIPER TO BE MEASURED AT THE BASE OF TREE AT ROOT BALL.

1 DECIDUOUS TREE PLANTING (ONE STAKE W/ARBOR TIES)
N.T.S.

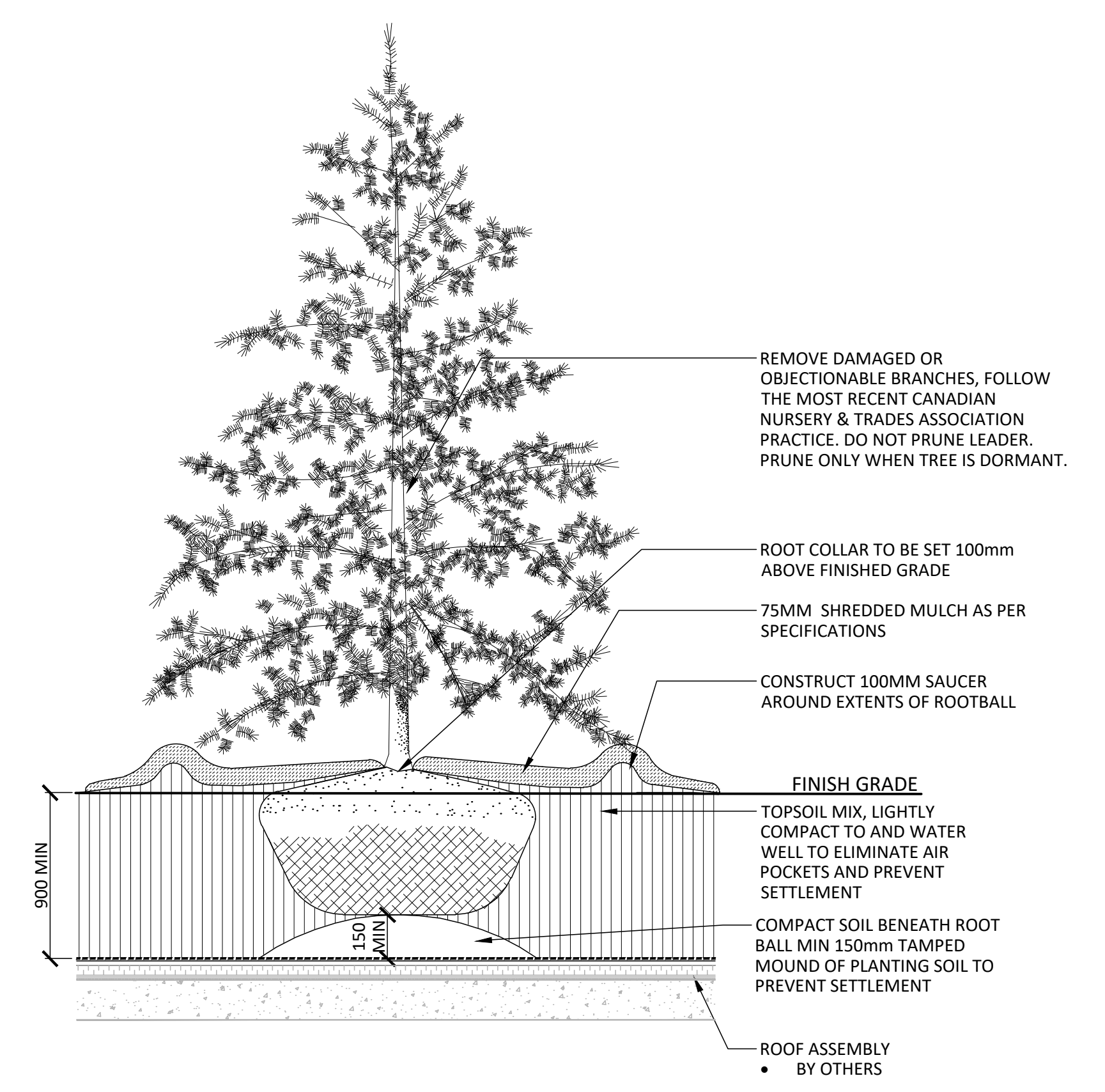


- NOTES:
1. REMOVE STAKE AFTER ONE YEAR OR UNTIL TAKEOVER UNLESS OTHERWISE DIRECTED BY THE LANDSCAPE ARCHITECT.
 2. TOPSOIL MIXTURE AND SHREDDED MULCH AS PER SPECIFICATION

3 CONIFEROUS TREE PLANTING (ONE STAKE W/ARBOR TIES)
N.T.S.



2 DECIDUOUS TREE PLANTING - ON SLAB
N.T.S.



4 CONIFEROUS TREE PLANTING - ON SLAB
N.T.S.

-		
-		
-		
4	Issued for Fourth Submission	24-09-10
3	Issued for Third Submission	24-05-23
2	Issued for Second Submission	24-05-06
1	Issued for Site Plan Approval	23-05-15
No.	Description	Date

Revision

City Approval Stamp



NAK
design strategies

1285 WELLINGTON STREET, OTTAWA, ON K1Y 3A8 CANADA
T 613.237.2345 NAKDESIGNSTRATEGIES.COM

256 CATHERINE STREET
OTTAWA ONTARIO

Title

DETAILS

Date	2023-02-03	Sheet	
Scale	AS SHOWN		
Drawn	JE/MM		
Checked	SC		
Job No.	23-015		
			L05