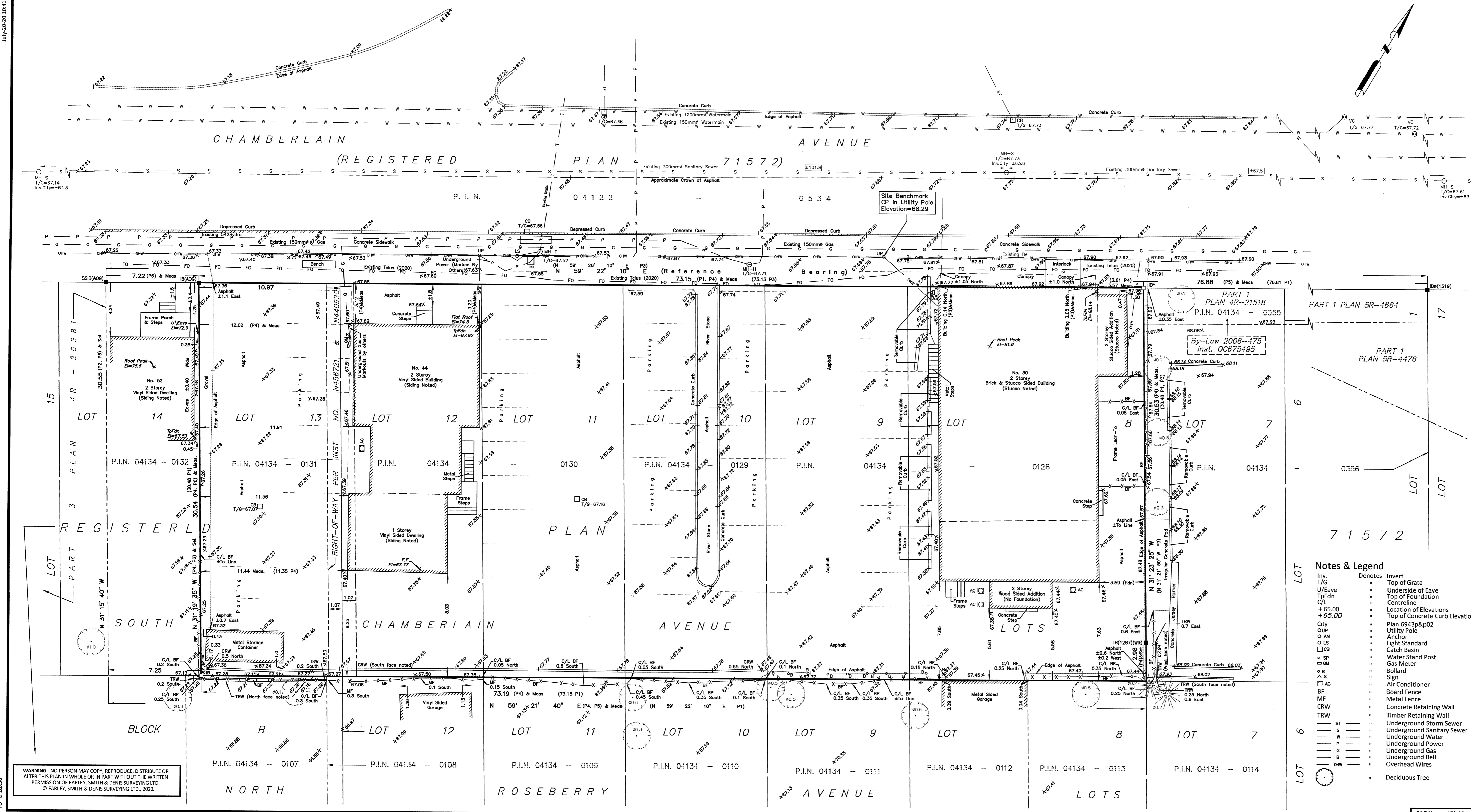


WARNING: NO PERSON MAY COPY, REPRODUCE, DISTRIBUTE OR ALTER THIS PLAN IN WHOLE OR IN PART WITHOUT THE WRITTEN PERMISSION OF FARLEY, SMITH & DENIS SURVEYING LTD. © FARLEY, SMITH & DENIS SURVEYING LTD., 2020.



TOPOGRAPHIC PLAN OF SURVEY OF
LOTS 8, 9, 10, 11, 12 & 13
(SOUTH CHAMBERLAIN AVENUE)
REGISTERED PLAN 71572
CITY OF OTTAWA
FARLEY, SMITH & DENIS SURVEYING LTD. 2020

Scale 1: 150
0 1.5 3 6 9 12 15 metres

Metric Note
Distances and coordinates on this plan are in metres and can be converted to feet by dividing by 0.3048.

Bearing Note
Bearings hereon are grid bearings derived from the Smart-Net Real Time Network and are referred to the Central Meridian of MTM Zone 9 (76°30' West Longitude) Nad-83 (Original).

For bearing comparisons, a rotation of 0°36'43" counter-clockwise was applied to bearings on P1, P2 & P6.
For bearing comparisons, a rotation of 0°01'05" clockwise was applied to bearings on P4.

Elevation Notes
1. Elevations shown are geodetic and are referred to Geodetic Datum CGVD-1928 :1978. (FSD File No. 17-17)
2. It is the responsibility of the user of this information to verify that the job benchmark has not been altered or disturbed and that its relative elevation and description agrees with the information shown on this drawing.

Utility Notes
1. This drawing cannot be accepted as acknowledging all of the utilities and it will be the responsibility of the user to contact the respective utility authorities for confirmation.
2. Only visible surface utilities were located.
3. Underground utility data derived from City of Ottawa utility sheet reference: F-12-16, F-12-17, 6943p&p02 & F11a.
4. Sanitary and storm sewer grades and inverts were derived/compiled from: Field measurement \ City of Ottawa
5. A field location of underground plant by the pertinent utility authority is mandatory before any work involving breaking ground, probing, excavating etc.

Notes & Legend

□	Denotes	Survey Monument Planted
■	Survey Monument Found	
SSIB	Short Standard Iron Bar	
IB	Iron Bar	
IBØ	Round Iron Bar	
(Wit)	Witness	
Meas	Measured	
(P1)	Registered Plan 71572	
(P2)	Plan 4R-21518	
(P3)	Plan 4R-21518	
(P4)	Plan by (1287) dated July 24, 2003 (Job no. 240-03)	
(P5)	Plan by (AOG) dated July 3, 2019 (Job no. 17750-19)	
(P6)	Plan by (AOG) dated October 4, 1988	
○ MH-ST	Maintenance Hole (Storm)	
○ MH-S	Maintenance Hole (Sanitary)	
○ MH-T	Maintenance Hole (Traffic)	
○ MH-H	Maintenance Hole (Hydro)	
⊕ VC	Valve Chamber (Watermain)	

REVISION NOTE:
This plan was revised to show existing tree location.

July 20/20
Date

Daniel Robinson
Ontario Land Surveyor

ASSOCIATION OF ONTARIO LAND SURVEYORS
PLAN SUBMISSION FORM
2123499

THIS PLAN IS NOT VALID UNLESS IT IS AN EMBOSSED ORIGINAL COPY ISSUED BY THE SURVEYOR In accordance with Regulation 3026, Section 29 (3).

Surveyor's Certificate
I certify that:
1. This survey and plan are correct and in accordance with the Surveys Act, the Surveys Act and the Regulations made under them.
2. The survey was completed on the 10th day of June, 2020.

June 18/20
Date

Daniel Robinson
Ontario Land Surveyor

FARLEY, SMITH & DENIS SURVEYING LTD.
ONTARIO LAND SURVEYORS
CANADA LAND SURVEYORS
190 COLONNADE ROAD, OTTAWA, ONTARIO K2E 7J5
TEL. (613) 727-8226 FAX. (613) 727-1826