

NEIGHBORING BUILDING

- GENERAL NOTES:**
- It is the responsibility of the appropriate contractor or official to report any errors, omissions or discrepancies on this plan with actual site conditions to the Landscape Architect before proceeding with construction.
  - The contractor is to notify all utility companies and authorities prior to any excavation and ascertain locations of underground services.
  - The contractor is to reinstate all areas and items damaged as a result of construction activity.
  - The contractor is to comply with all pertinent codes and by-laws.
  - The contractor is to maintain a positive surface run-off throughout the entire construction period.
  - The Landscape Architect is not responsible for subsurface conditions.
  - The contractor is to identify all existing trees to remain on site with the Landscape Architect prior to construction.

AS PER SECTION 75 OF THE 'TREE PROTECTION BY-LAW' MITIGATION MEASURES WILL INCLUDE 'THE PLACEMENT OF PLYWOOD, WOOD CHIPS OR STEEL PLATING OVER THE ROOTS; THE PROPER PRUNING AND CARE FOR ROOTS WHERE THEY ARE ENCOUNTERED AND ; THE USE OF TUNNELING OR BORING WHEN EXCAVATING'

NOTE: NO GRADING IS TO TAKE PLACE WITHIN CRITICAL ROOT ZONE OF EXISTING TREES TO REMAIN

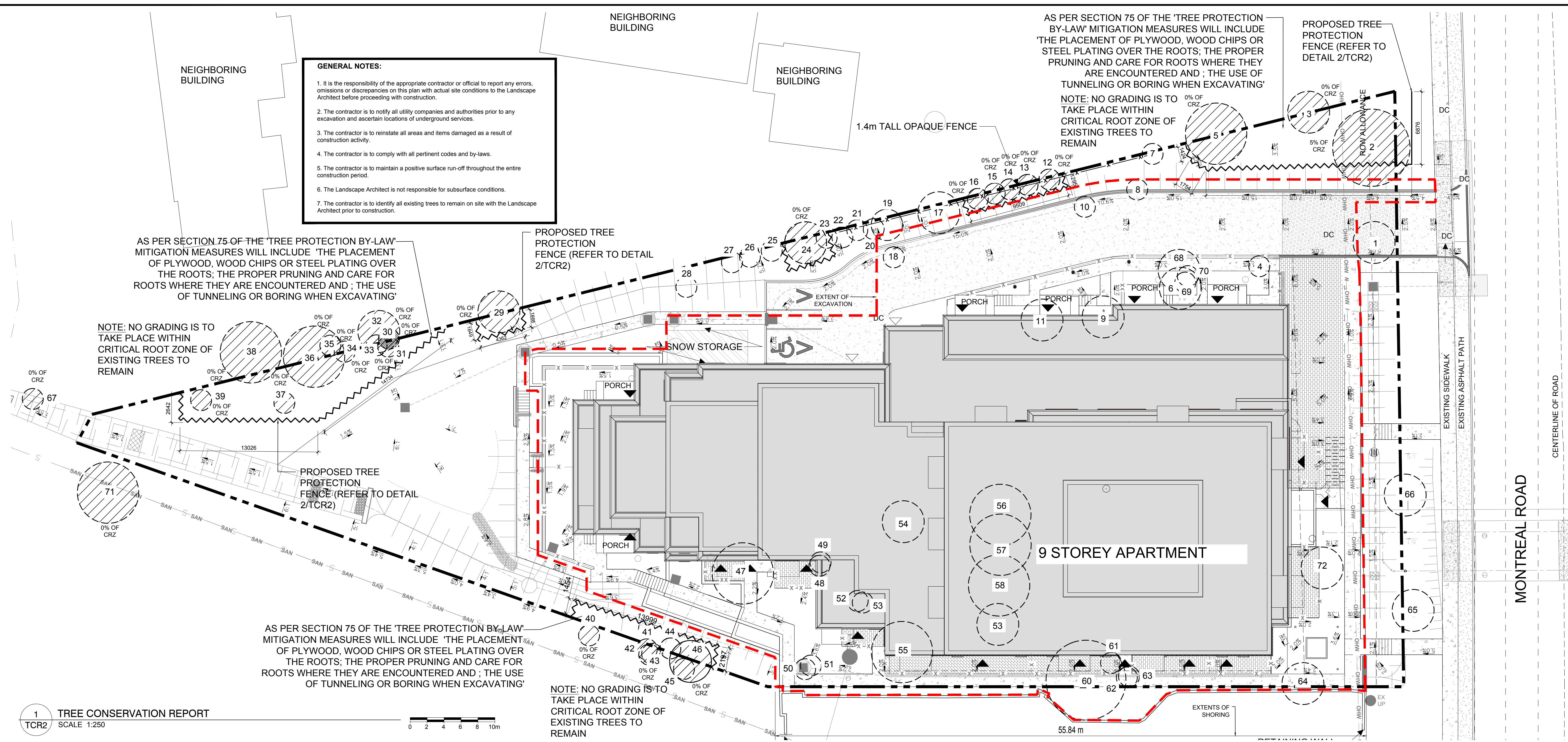
AS PER SECTION 75 OF THE 'TREE PROTECTION BY-LAW' MITIGATION MEASURES WILL INCLUDE 'THE PLACEMENT OF PLYWOOD, WOOD CHIPS OR STEEL PLATING OVER THE ROOTS; THE PROPER PRUNING AND CARE FOR ROOTS WHERE THEY ARE ENCOUNTERED AND ; THE USE OF TUNNELING OR BORING WHEN EXCAVATING'

NOTE: NO GRADING IS TO TAKE PLACE WITHIN CRITICAL ROOT ZONE OF EXISTING TREES TO REMAIN

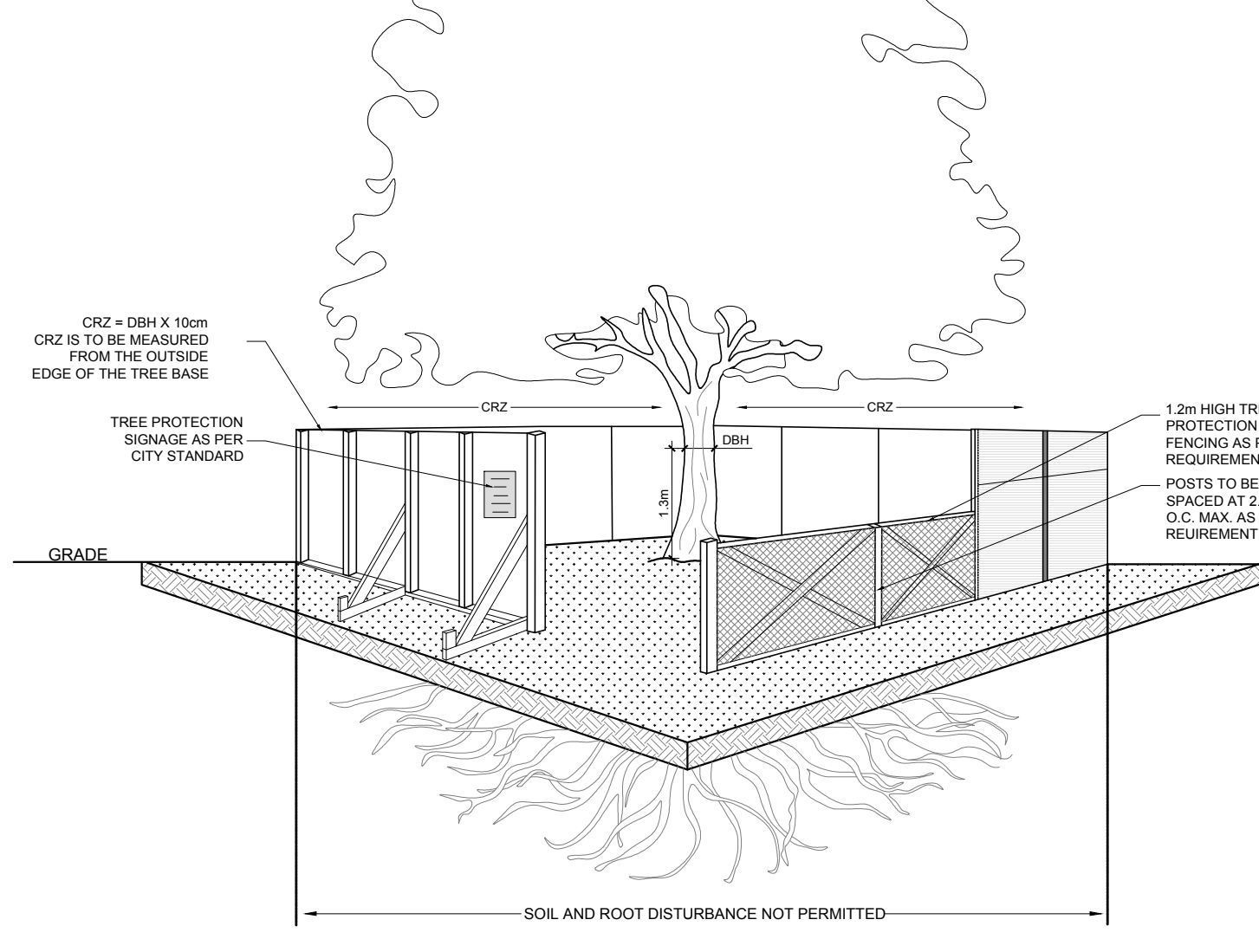
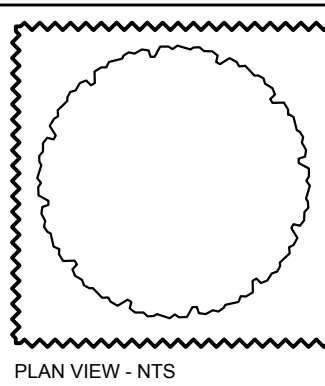
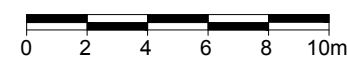
AS PER SECTION 75 OF THE 'TREE PROTECTION BY-LAW' MITIGATION MEASURES WILL INCLUDE 'THE PLACEMENT OF PLYWOOD, WOOD CHIPS OR STEEL PLATING OVER THE ROOTS; THE PROPER PRUNING AND CARE FOR ROOTS WHERE THEY ARE ENCOUNTERED AND ; THE USE OF TUNNELING OR BORING WHEN EXCAVATING'

NOTE: NO GRADING IS TO TAKE PLACE WITHIN CRITICAL ROOT ZONE OF EXISTING TREES TO REMAIN

PROPOSED TREE PROTECTION FENCE (REFER TO DETAIL 2/TCR2)



1 TREE CONSERVATION REPORT  
SCALE 1:250



**TREE PROTECTION REQUIREMENTS:**

- PRIOR TO ANY WORK ACTIVITY WITHIN THE CRITICAL ROOT ZONE (CRZ = 10x DIAMETER) OF A TREE, TREE PROTECTION FENCING MUST BE INSTALLED SURROUNDING THE CRITICAL ROOT ZONE AND REMAIN IN PLACE UNTIL THE WORK IS COMPLETE.
    - DO NOT PLACE ANY MATERIAL OR EQUIPMENT INCLUDING OUTHOUSES;
    - DO NOT ATTACH ANY SIGNS, NOTICES OR POSTERS TO ANY TREE;
    - DO NOT RAISE OR LOWER THE EXISTING GRADE;
    - TUNNEL OR BORE WHEN DIGGING;
    - DO NOT DAMAGE THE ROOT SYSTEM, TRUNK, OR BRANCHES OF ANY TREE;
    - ENSURE THAT EXHAUST FUMES FROM ALL EQUIPMENT ARE NOT DIRECTED TOWARD ANY TREE CANOPY;
    - DO NOT EXTEND HARD SURFACE OR SIGNIFICANTLY CHANGE LANDSCAPING
  - UNLESS PLANS ARE APPROVED BY CITY FORESTRY STAFF, FOR WORK WITHIN THE CRZ:
    - DO NOT PLACE ANY MATERIAL OR EQUIPMENT INCLUDING OUTHOUSES;
    - DO NOT ATTACH ANY SIGNS, NOTICES OR POSTERS TO ANY TREE;
    - DO NOT RAISE OR LOWER THE EXISTING GRADE;
    - TUNNEL OR BORE WHEN DIGGING;
    - DO NOT DAMAGE THE ROOT SYSTEM, TRUNK, OR BRANCHES OF ANY TREE;
    - ENSURE THAT EXHAUST FUMES FROM ALL EQUIPMENT ARE NOT DIRECTED TOWARD ANY TREE CANOPY;
    - DO NOT EXTEND HARD SURFACE OR SIGNIFICANTLY CHANGE LANDSCAPING
  - TREE PROTECTION FENCING MUST BE AT LEAST 1.2m IN HEIGHT, AND BE CONSTRUCTED OF RIGID OR FRAMED MATERIALS (E.G. MODULOC - STEEL PLYWOOD HOARDING, OR SNOW FENCE ON A 2"x4" WOOD FRAME) WITH POSTS 2.4m APART. SUCH THAT THE FENCE LOCATION CANNOT BE ALTERED. ALL SUPPORTS AND BRACINGS MUST BE PLACED OUTSIDE OF THE CRZ, AND INSTALLATION MUST MINIMIZE DAMAGE TO EXISTING ROOTS. (SEE DETAIL)
  - THE LOCATION OF THE TREE PROTECTION FENCING MUST BE DETERMINED BY AN ARBORIST AND DETAILED ON ANY ASSOCIATED PLANS FOR THE SITE (E.G. TREE CONSERVATION REPORT, TREE DISCLOSURE REPORT, ETC). THE PLAN AND CONSTRUCTED FENCING MUST BE APPROVED BY CITY FORESTRY STAFF PRIOR TO THE COMMENCEMENT OF WORK.
  - IF THE FENCED TREE PROTECTION AREA MUST BE REDUCED TO FACILITATE CONSTRUCTION, MITIGATION MEASURES MUST BE PRESCRIBED BY AN ARBORIST AND APPROVED BY CITY FORESTRY STAFF. THESE MAY INCLUDE THE PLACEMENT OF PLYWOOD, WOOD CHIPS OR STEEL PLATING OVER THE ROOTS FOR PROTECTION OR THE PROPER PRUNING AND CARE OF ROOTS WHERE ENCOUNTERED.
- BY-LAWS:**
- ALL CITY-OWNED TREES ARE PROTECTED UNDER THE MUNICIPAL TREES AND NATURAL AREAS PROTECTION BY-LAW (2006-279), WITHIN THE URBAN AREA.
- PRIVATELY-OWNED TREES GREATER THAN 50cm IN DIAMETER ON LOTS 1 HECTARE IN SIZE OR LESS, AND TREES GREATER THAN 10cm IN DIAMETER ON LOTS GREATER THAN 1 HECTARE, ARE PROTECTED UNDER THE URBAN TREE CONSERVATION BY-LAW (2009-200).

Tree #	COMMON NAME	BOTANICAL NAME	DBH (mm)	CRZ (m)	Ownership	Condition	Recommended Action
1	White Spruce	<i>Picea glauca</i>	460	4.6	1815 MONTREAL	Good	To be removed
2	White Spruce	<i>Picea glauca</i>	380	3.8	1815 MONTREAL	Good	To remain
3	White Spruce	<i>Picea glauca</i>	510	5.1	203 ROTHWELL	Good	To remain
4	Manitoba Maple	<i>Acer negundo</i>	210	2.1	1815 MONTREAL	Poor	To be removed
5	White Spruce	<i>Picea glauca</i>	660	6.6	203 ROTHWELL	Good	To remain
6	Manitoba Maple	<i>Acer negundo</i>	230	2.3	1815 MONTREAL	Fair	To be removed
7	White Pine	<i>Pinus strobus</i>	330	3.3	1815 MONTREAL	Good	To be removed
8	Norway Maple	<i>Acer platanoides</i>	210	2.1	1815 MONTREAL	Good	To be removed
9	White Cedar	<i>Thuja occidentalis</i>	450	4.5	1815 MONTREAL	Good	To be removed
10	Norway Maple	<i>Acer platanoides</i>	20	2	1815 MONTREAL	Good	To be removed
11	Balsam Fir	<i>Abies balsamea</i>	440	4.4	1815 MONTREAL	Good	To be removed
12	White Spruce	<i>Picea glauca</i>	200	2	JOINTLY OWNED	Good	To remain
13	White Spruce	<i>Picea glauca</i>	220	2.2	JOINTLY OWNED	Good	To remain
14	White Spruce	<i>Picea glauca</i>	210	2.1	JOINTLY OWNED	Good	To remain
15	White Spruce	<i>Picea glauca</i>	240	2.4	JOINTLY OWNED	Dead	To remain
16	White Spruce	<i>Picea glauca</i>	190	1.9	JOINTLY OWNED	Good	To remain
17	White Spruce	<i>Picea glauca</i>	310	3.1	1815 MONTREAL	Good	To be removed
18	Manitoba Maple	<i>Acer negundo</i>	320	3.2	1815 MONTREAL	Good	To be removed
19	White Spruce	<i>Picea glauca</i>	400	4.0	1815 MONTREAL	Good	To be removed
20	White Spruce	<i>Picea glauca</i>	360	3.6	1815 MONTREAL	Good	To be removed
21	White Spruce	<i>Picea glauca</i>	210	2.1	1815 MONTREAL	Good	To be removed
22	White Spruce	<i>Picea glauca</i>	220	2.2	1815 MONTREAL	Good	To be removed
23	White Spruce	<i>Picea glauca</i>	150	1.5	1815 MONTREAL	Good	To be removed
24	White Spruce	<i>Picea glauca</i>	240	2.4	JOINTLY OWNED	Good	To remain
25	Norway Maple	<i>Acer platanoides</i>	150	1.5	1815 MONTREAL	Good	To be removed
26	Norway Maple	<i>Acer platanoides</i>	110	1.1	1815 MONTREAL	Poor	To be removed
27	Norway Maple	<i>Acer platanoides</i>	210	2.1	1815 MONTREAL	Good	To be removed
28	Manitoba Maple	<i>Acer negundo</i>	260	2.6	1815 MONTREAL	Good	To be removed
29	Manitoba Maple	<i>Acer negundo</i>	360	3.6	201 ROTHWELL	Good	To remain
30	White Cedar	<i>Thuja occidentalis</i>	150	1.5	162 ROTHWELL	Poor	To remain
31	White Cedar	<i>Thuja occidentalis</i>	150	1.5	1815 MONTREAL	Poor	To remain
32	American Elm	<i>Picea glauca</i>	2x400	4.00	162 ROTHWELL	Fair	To remain
33	White Cedar	<i>Thuja occidentalis</i>	150	1.5	1815 MONTREAL	Poor	To remain
34	Sugar Maple	<i>Acer saccharum</i>	150	1.5	162 ROTHWELL	Good	To remain
35	Sugar Maple	<i>Acer saccharum</i>	150	1.5	162 ROTHWELL	Good	To remain
36	Sugar Maple	<i>Acer saccharum</i>	450	4.5	162 ROTHWELL	Good	To remain
37	White Spruce	<i>Picea glauca</i>	100	1.0	1815 MONTREAL	Good	To remain

Tree #	COMMON NAME	BOTANICAL NAME	DBH (mm)	CRZ (m)	Ownership	Cond.	Recommended Action
38	White Spruce	<i>Picea glauca</i>	400	4.0	162 ROTHWELL	Good	To remain
39	White Spruce	<i>Picea glauca</i>	120	1.2	1815 MONTREAL	Good	To remain
40	Sugar Maple	<i>Acer saccharum</i>	25	2.5	41 CEDAR ROAD	Good	To remain
41	Sugar Maple	<i>Acer saccharum</i>	100	1.0	JOINTLY OWNED	Good	To remain
42	Sugar Maple	<i>Acer saccharum</i>	100	1.0	41 CEDAR ROAD	Good	To remain
43	Sugar Maple	<i>Acer saccharum</i>	100	1.0	41 CEDAR ROAD	Good	To remain
44	Sugar Maple	<i>Acer saccharum</i>	100	1.0	1815 MONTREAL	Good	To be removed
45	Sugar Maple	<i>Acer saccharum</i>	100	1.0	41 CEDAR ROAD	Poor	To remain
46	Sugar Maple	<i>Acer saccharum</i>	220	2.2	JOINTLY OWNED	Good	To remain
47	Sugar Maple	<i>Acer saccharum</i>	730	7.3	1815 MONTREAL	Good	To be removed
48	Sugar Maple	<i>Acer saccharum</i>	100	1.0	1815 MONTREAL	Good	To be removed
49	Sugar Maple	<i>Acer saccharum</i>	140	1.4	1815 MONTREAL	Good	To be removed
50	Sugar Maple	<i>Acer saccharum</i>	150	1.5	1815 MONTREAL	Good	To be removed
51	Sugar Maple	<i>Acer saccharum</i>	150	1.5	1815 MONTREAL	Good	To be removed
52	Crabapple	<i>Malus spp.</i>	200	2.0	1815 MONTREAL	Good	To be removed
53	Crabapple	<i>Malus spp.</i>	200	2.0	1815 MONTREAL	Good	To be removed
54	Crabapple	<i>Malus spp.</i>	260	2.6	1815 MONTREAL	Good	To be removed
55	Manitoba Maple	<i>Acer negundo</i>	3x250-350	3.5	1815 MONTREAL	Good	To be removed
56	White Pine	<i>Pinus strobus</i>	550	5.5	1815 MONTREAL	Good	To be removed
57	White Spruce	<i>Picea glauca</i>	560	5.6	1815 MONTREAL	Good	To be removed
58	White Spruce	<i>Picea glauca</i>	600	6.0	1815 MONTREAL	Good	To be removed
59	Scots Pine	<i>Pinus sylvestris</i>	380	3.8	1815 MONTREAL	Good	To be removed
60	Sugar Maple	<i>Acer saccharum</i>	530	5.3	1815 MONTREAL	Good	To be removed
61	Sugar Maple	<i>Acer saccharum</i>	570	5.7	1815 MONTREAL	Good	To be removed
62	Sugar Maple	<i>Acer saccharum</i>	100	1.0	1815 MONTREAL	Good	To be removed
63	Sugar Maple	<i>Acer saccharum</i>	100	1.0	1815 MONTREAL	Good	To be removed
64	Sugar Maple	<i>Acer saccharum</i>	210	2.1	1815 MONTREAL	Good	To be removed
65	Manitoba Maple	<i>Acer negundo</i>	220	2.2	CITY OF OTTAWA	Poor	To remain
66	Sugar Maple	<i>Acer saccharum</i>	510	5.1	CITY OF OTTAWA	Fair	To be removed
67	White Spruce	<i>Picea glauca</i>	100	1.0	CITY OF OTTAWA	Good	To remain
68	Manitoba Maple	<i>Acer negundo</i>	150	1.5	1815 MONTREAL	Good	To be removed
69	Manitoba Maple	<i>Acer negundo</i>	210	2.1	1815 MONTREAL	Poor	To be removed
70	Manitoba Maple	<i>Acer negundo</i>	220	2.2	1815 MONTREAL	Good	To be removed
71	Norway Spruce	<i>Picea abies</i>	400	4.0	41 CEDAR ROAD	Good	To remain
72	Common Purple Lilac	<i>Syringa vulgaris</i>	100-150	1.5	1815 MONTREAL	Good	To be removed
73	Manitoba Maple	<i>Acer negundo</i>	200-300	3.0	CITY OF OTTAWA	Good	To be removed
74	Norway Maple	<i>Acer platanoides</i>	150	1.5	CITY OF OTTAWA	Good	To be removed

CLIENT  
**Creative Development Ventures - 14193679 CANADA INC**

CONSULTANTS  
ARCHITECTS  
**CSV ARCHITECTS**  
sustainable design · conception écologique  
413.564.8118 190 O'Connor Street, Suite 100  
www.csv.ca Ottawa, Ontario, K2P 2P3

SURVEYORS:  
**J.D. BARNES**  
LAND INFORMATION SPECIALISTS  
OTHER SERVICES: REAL ESTATE CONSULTING, PHOTOGRAPHY, VIDEOGRAPHY

**LEGEND**

- EXISTING TREE TO REMAIN
- EXISTING TREE TO BE REMOVED
- TREE PROTECTION FENCE
- EXTENT OF EXCAVATION

6	REVISED PER NEW CIVIL DRAWING	02/16/2024	ML	JL
5	EXCAVATION EXTENT REVISED	02/15/2024	ML	JL
4	REVISED PER NEW SITE PLAN	01/08/2024	ML	JL
3	REVISED PER CITY COMMENTS	01/03/2024	CM	JL
2	ISSUED FOR SITE PLAN CONTROL	05/30/2023	CM	JL
1	ISSUED FOR DISCUSSION AND REVIEW	05/18/2023	ML	JL
Issue		Date	ML	DR CK

**JAMES B. LENNOX & ASSOCIATES INC.**  
**LANDSCAPE ARCHITECTS**  
3332 CARLING AVE. OTTAWA, ONTARIO K2H 5A8  
Tel: (613) 722-5168 Fax: (866) 343-3942

PROJECT  
**PROPOSED DEVELOPMENT**  
1815 MONTREAL STREET, KINGSTON ON

DRAWING  
**TREE CONSERVATION REPORT**

STAMP

SCALE  
AS SHOWN

START DATE  
APRIL 2023

PROJECT NO.  
23CV2349

PROJECT NORTH

DRAWING NO.  
**TCR2**

PLOT SIZE ARCH-D