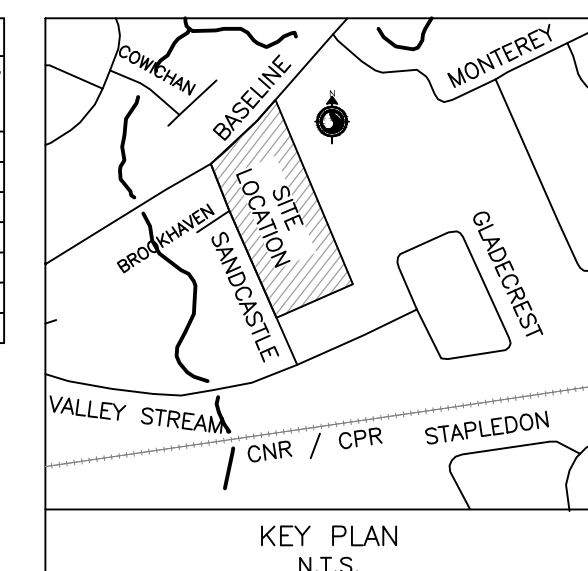
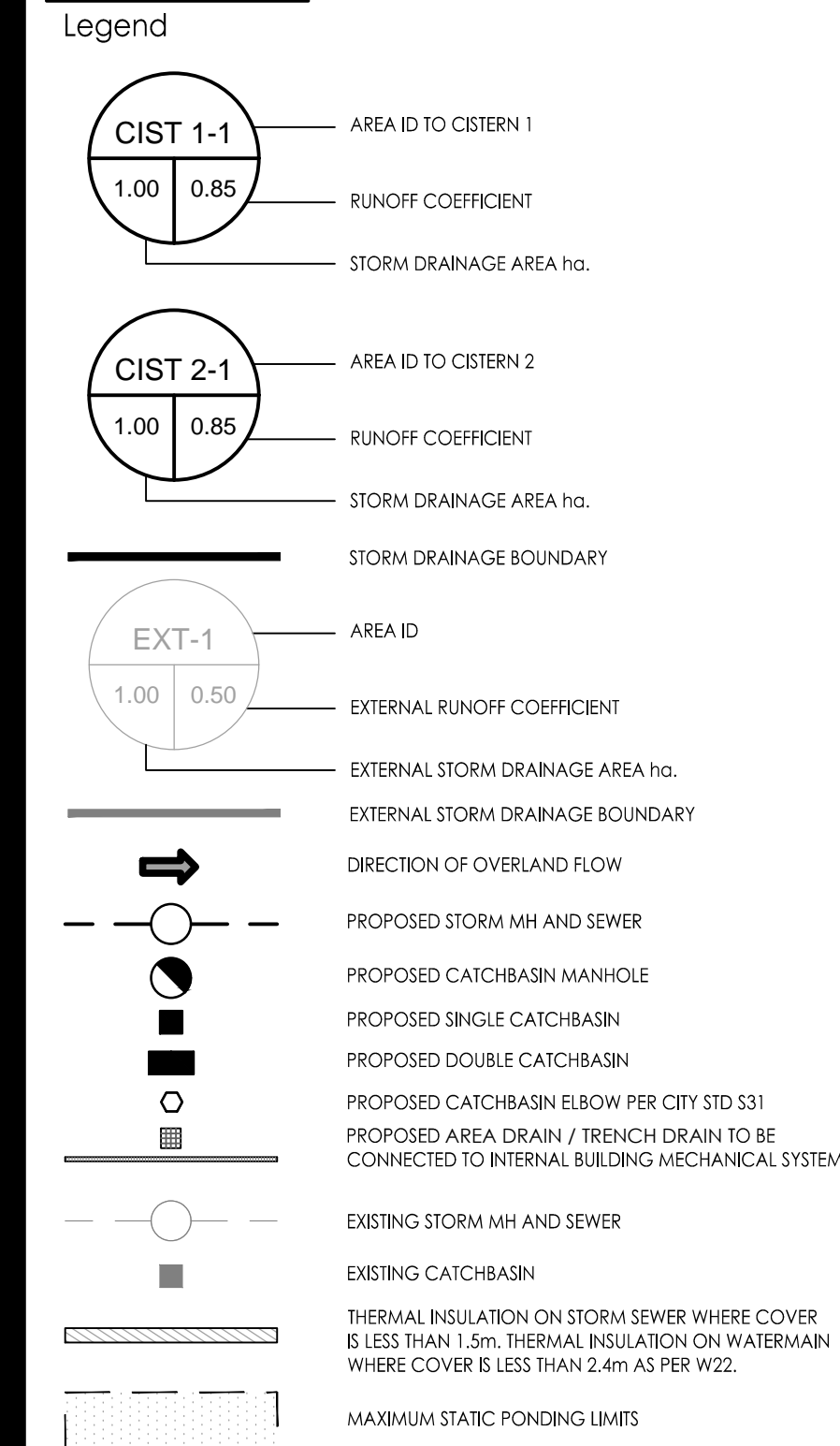


ICD TABLE				
CATCHBASIN ID	TRIBUTARY AREA ID	ICD TYPE	5-YR FLOW (L/s)	100-YR FLOW (L/s)
EX 100	PL1	EX 171 mm ORIFICE	75.6	97.3
STM 100	CIST 1-1 TO 1-12, EXT-1, EXT-2	BUILDING MECHANICAL	21.3	21.3
STM 200	CIST 2-1 TO 2-11	BUILDING MECHANICAL	17.2	17.2
PARK 1	FREE1	UNCONTROLLED	14.8	21.6
	OFF-SITE 1	UNCONTROLLED	8.1	15.5
	OFF-SITE 2	UNCONTROLLED	18.2	35.0



Stantec Consulting Ltd.
400 - 1331 Clyde Avenue
Ottawa ON
Tel. 613.722.4420
www.stantec.com

Copyright Reserved
The Contractor shall verify and be responsible for all dimensions. DO NOT scale the drawing - any errors or omissions shall be reported to Stantec without delay.
The Copyrights to all designs and drawings are the property of Stantec. Reproduction or use for any purpose other than that authorized by Stantec is forbidden.



Notes
1. STORMWATER MANAGEMENT TO BE PROVIDED THROUGH INTERNAL BUILDING MECHANICAL SYSTEMS.
PHASE 3 + 4 = 175.0 m²
PHASE 5 + 6 = 216.0 m²
MAX. RELEASE RATE TO STORM SEWER
PHASE 3 + 4 RELEASE RATE = 21.3 L/s
PHASE 5 + 6 RELEASE RATE = 17.2 L/s
STORAGE AND RELEASE RATE CONTROL AS PER BUILDING MECHANICAL ENGINEERING DESIGN.

NO.	REVISION	DATE	BY	CHKD.	APPD.
1	REVISED AS PER NEW SITE PLAN	24.07.19	MJS	RB	
0	ISSUED FOR SPA	23.05.25	MJS	RB	
Revision					
			By	Appd.	YY.MM.DD
File Name:	160401676 D8.dwg	MJS	RB	MJS	23.03.31
Permit-Seal		Dwn.	Chkd.	Dgn.	YY.MM.DD

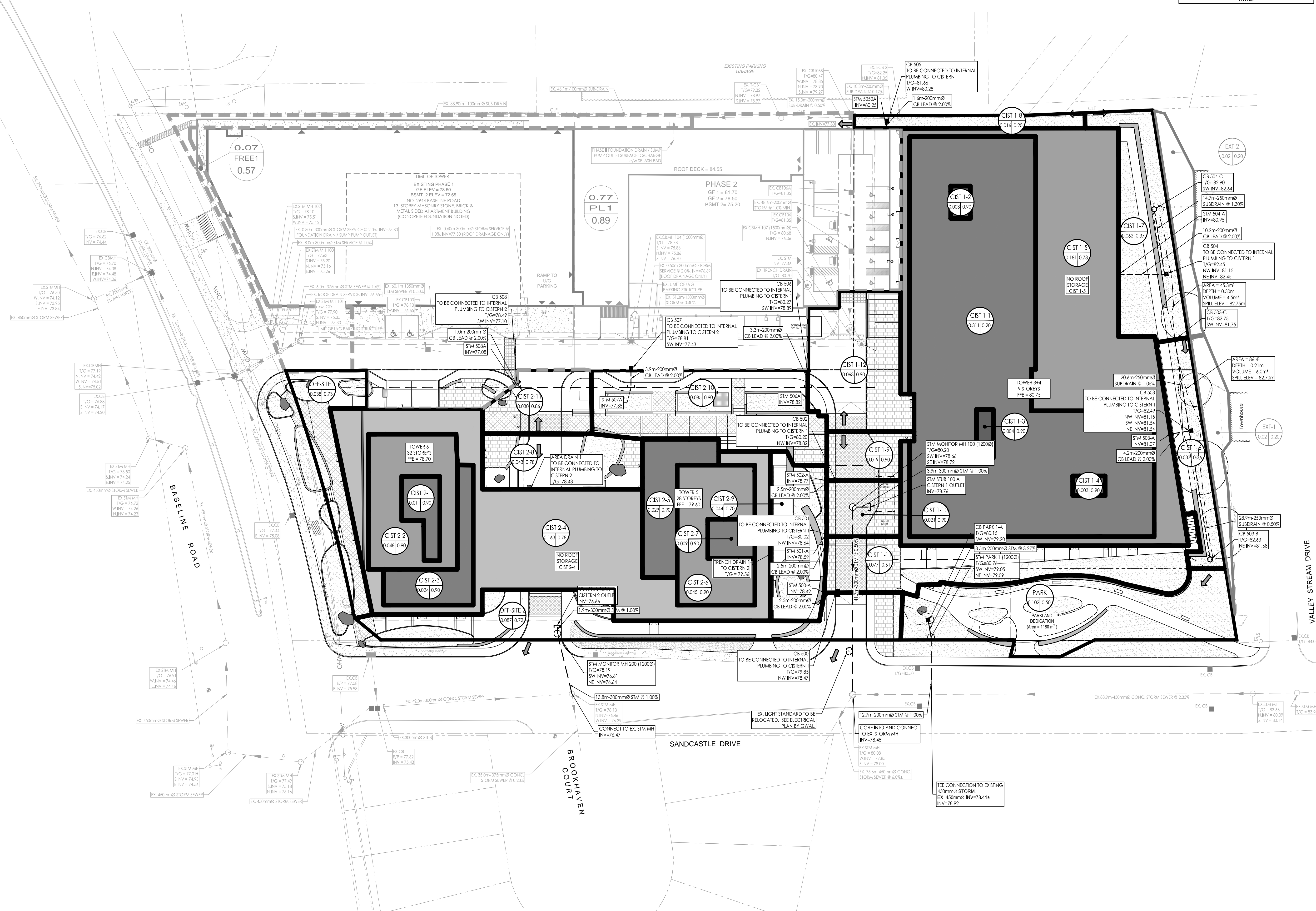


Client/Project
BRIGIL HOMES

BASELINE TOWERS 3-4-5-6
2946 BASELINE ROAD
OTTAWA, ON, CANADA

Title
STORM DRAINAGE PLAN

Project No.	Scale	0 4 12 20m
160401676	1:400	
Drawing No.	Sheet	Revision
SD-1	6 of 7	1



I:\Projects\160401676\160401676 D8.dwg
 2024/07/19 09:58:19 AM
 ORIGINAL SHEET - ARCH D