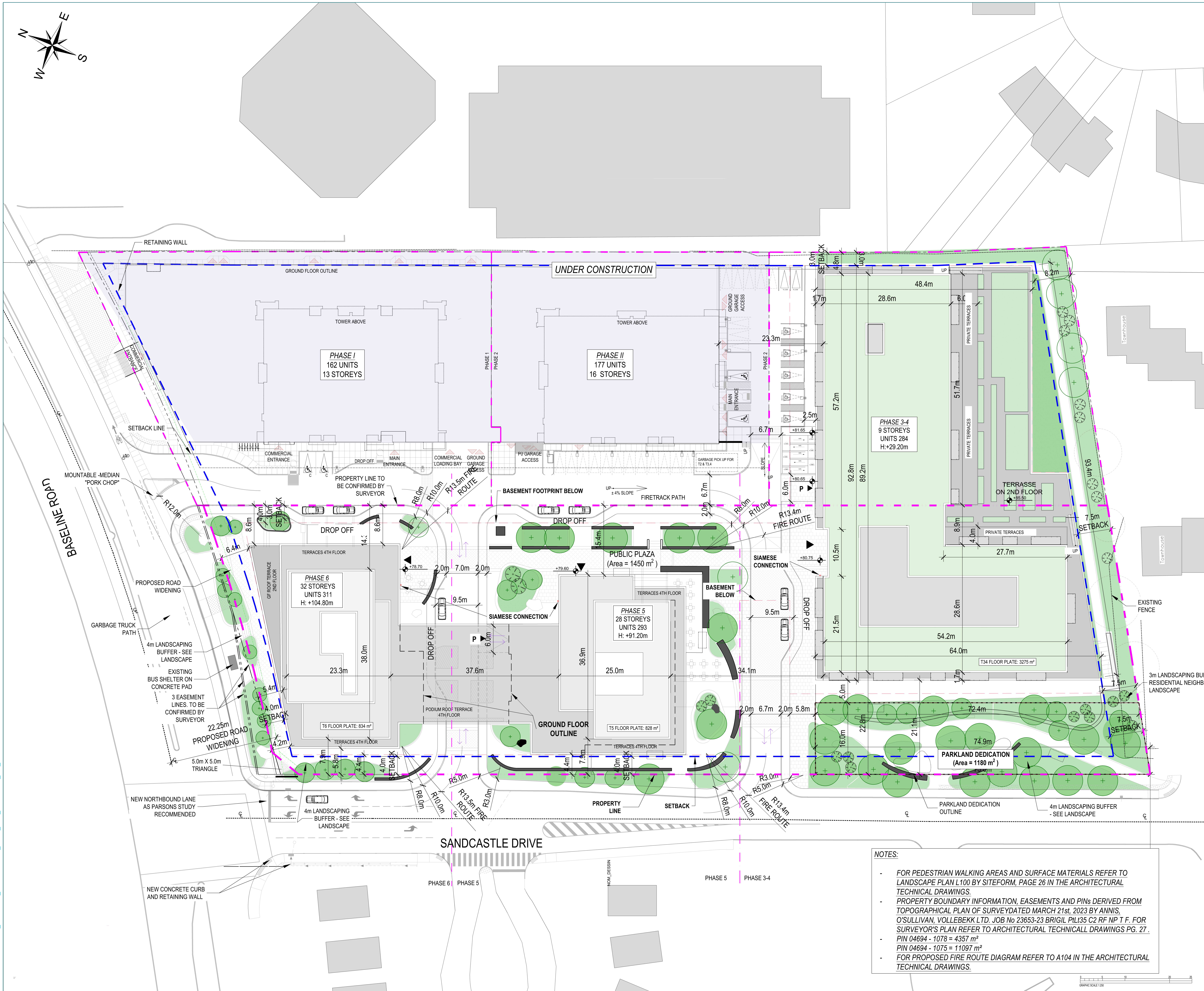


Autodesk Docs://12762_BASELINE_R22/BASELINE_12762_ARC_TOWER 5-6_INT_R22.rvt



NOTES GÉNÉRALES / General Notes

1. Ces documents d'architecture sont la propriété exclusive de NEUF Architecture et ne peuvent être utilisés, reproduits ou copiés sans autorisation écrite préalable. / These architectural documents are the exclusive property of NEUF Architecture and cannot be used, copied or reproduced without written pre-authorization.
2. Les dimensions apparaissant aux documents doivent être vérifiées par l'entrepreneur avant le début des travaux. / All dimensions which appear on the documents must be verified by the contractor before to start the work.
3. Veuillez aviser l'architecte de toute dimension erronée ou divergence entre ces documents et ceux des autres professionnels. / The architect must be notified of all errors, omissions and discrepancies between these documents and those of the others professionals.
4. Les dimensions sur ces documents doivent être lues et non mesurées. / The dimensions on these documents must be read and not measured.

STRUCTURE / Structural
Laroux & Cyr
 500 boul. Cham. Est. Bureau 105, Montréal QC H3L 3R9
 T: 514-381-7773 Courriel: glaroux@larouxcy.com

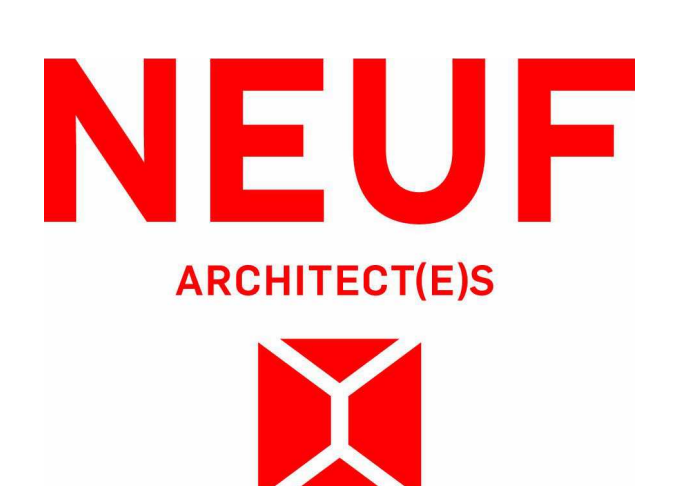
PLANIFICATEUR / Planner
FOTENN Planning & Urban Design
 223, McCord Street, Ottawa, ON K2P 6Z8
 T: 613 739 5700 Email: bee@fotenn.com

ARCHITECTURE DE PAYSAGE / Landscape Architect
SITEFORM
 Jonathan Landmann
 T: 613 796 4537 Email: jonathan.landmann@siteform.ca

GÉOTECHNIQUE / Geotechnical
Paterson Group
 6400 Ave. Ontario, Ottawa, ON K2E 1T9
 T: 613 226 7361 Email: jylleneuve@patersongroup.ca

CIVIL / Civil
STANTEC
 300 - 1331 Clyde Avenue, Ottawa ON K2C 3G4
 T: 613 722-4430 Email:

ARCHITECTES / Architect
NEUF ARCHITECTES INC.
 650, boul. René-Lévesque O. 32e étage, Montréal QC H3B 1S6
 T: 514-847-1117 NEUFARCHITECTES.COM



OUVRAGE / Project
BASELINE TOWER 3456

EMPLACEMENT / Location
2946 BASELINE ROAD, OTTAWA, ON

NO. / REVISION **DATE (aa-mm-jj)**

1	FOR SITE PLAN APPLICATION	26-06-2023
2	FOR SITE PLAN APPLICATION	19-07-2024

DESIGNÉ PAR / Drawn by **VÉRIFIÉ PAR / Checked by**
 CB/AT CB

DATE (aa-mm-jj) **ECHELLE / Scale**
 23/04/21

TITRE DU DESSIN / Drawing Title
PROPOSED SITE PLAN

REVISION / Revision **NO. DESSIN / Dwg Number**

NOTES:

- FOR PEDESTRIAN WALKING AREAS AND SURFACE MATERIALS REFER TO LANDSCAPE PLAN L100 BY SITEFORM, PAGE 26 IN THE ARCHITECTURAL TECHNICAL DRAWINGS.
- PROPERTY BOUNDARY INFORMATION, EASEMENTS AND PINs DERIVED FROM TOPOGRAPHICAL PLAN OF SURVEY DATED MARCH 21st, 2023 BY ANNIS, O'SULLIVAN, VOLLEBEKK LTD. JOB No 23653-23 BRIGIL P1L35 C2 RF NP T F. FOR SURVEYOR'S PLAN REFER TO ARCHITECTURAL TECHNICAL DRAWINGS PG. 27.
- PIN 04694 - 1078 = 4357 m²
- PIN 04694 - 1075 = 11097 m²
- FOR PROPOSED FIRE ROUTE DIAGRAM REFER TO A104 IN THE ARCHITECTURAL TECHNICAL DRAWINGS.

