

LOT 6 AND  
PART OF LOTS 5, 7, 8, 9, 10, 11 & 12  
REGISTERED PLAN 310501  
& PART OF LOTS 5, 6, 7, 8 & 9  
REGISTERED PLAN 310509  
CITY OF OTTAWA  
FARLEY, SMITH & DENIS SURVEYING LTD. 2023

Scale 1: 400  
0 10 20 30 40 metres

**Metric Note**  
Distances shown on this plan are in metres and can be converted to feet by dividing by 0.3048.

**Distance Note**  
Distances shown on this plan are ground distances and can be converted to grid distances by multiplying by the combined scale factor of 0.99994.

**Bearing Note**  
Bearings hereon are grid bearings derived from the Can-Nat Real Time Network and are referred to the Central Meridian of MTN Zone 9 (76°30' West Longitude) Nad-83 (Original).  
For bearing comparisons, a rotation of 0°32'15" counter-clockwise was applied to bearings on P1, P2, P3, P4, P6, P7 & P9.

**Elevation Notes**  
1. Elevations shown are geodetic and are referred to Geodetic Datum CGVD-1928 1578. (Mounton No. 19608002)  
2. It is the responsibility of the user of this information to verify that its relative elevation and description agrees with the information shown on this drawing.

**Utility Notes**  
1. This drawing cannot be accepted as acknowledging all of the utilities and it will be the responsibility of the user to contact the respective utility authorities for confirmation.  
2. Only visible surface utilities were located.  
3. Underground utility data derived from City of Ottawa utility sheet reference: 1-06-04, 1-06-05, 1-06-07, 833-834-835p4-03, 6122p&01, 11521p&8 & 12512p&1.  
4. Sanitary and storm sewer grades and inverts were compiled from: City of Ottawa Utility Sheets.  
5. A field location of underground plant by the pertinent utility authority is mandatory before any work involving breaking ground, probing, excavating, etc.

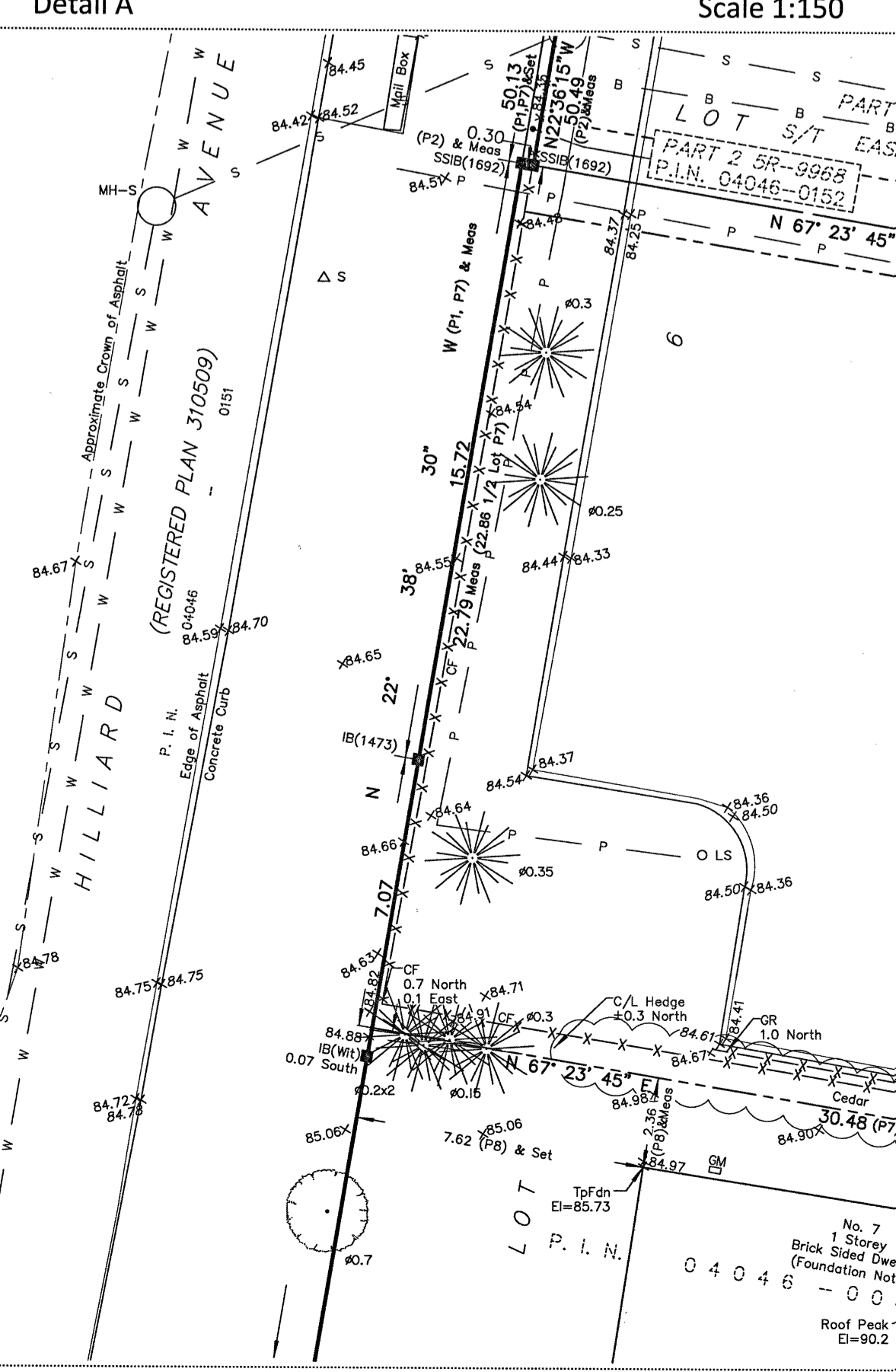
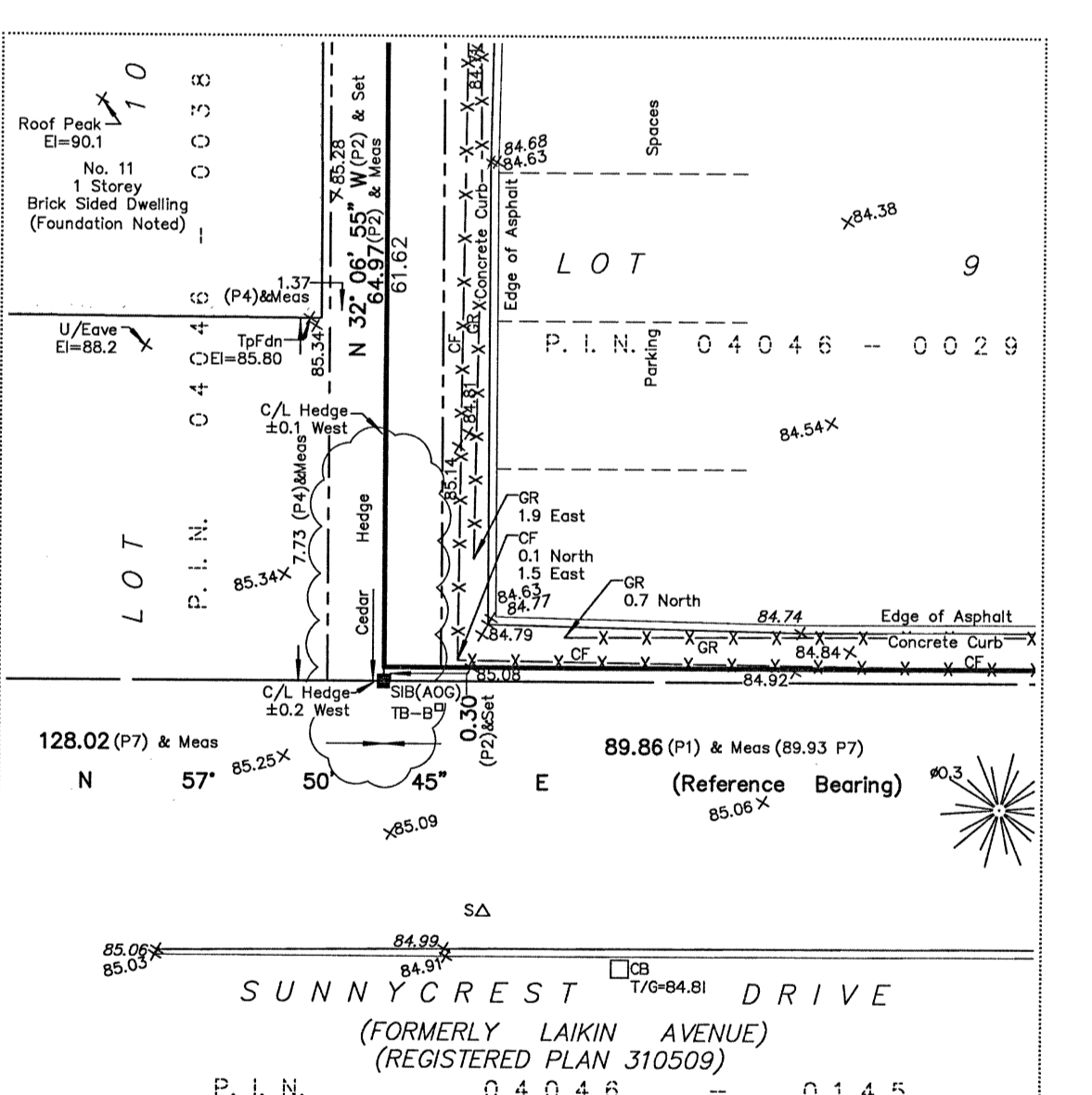
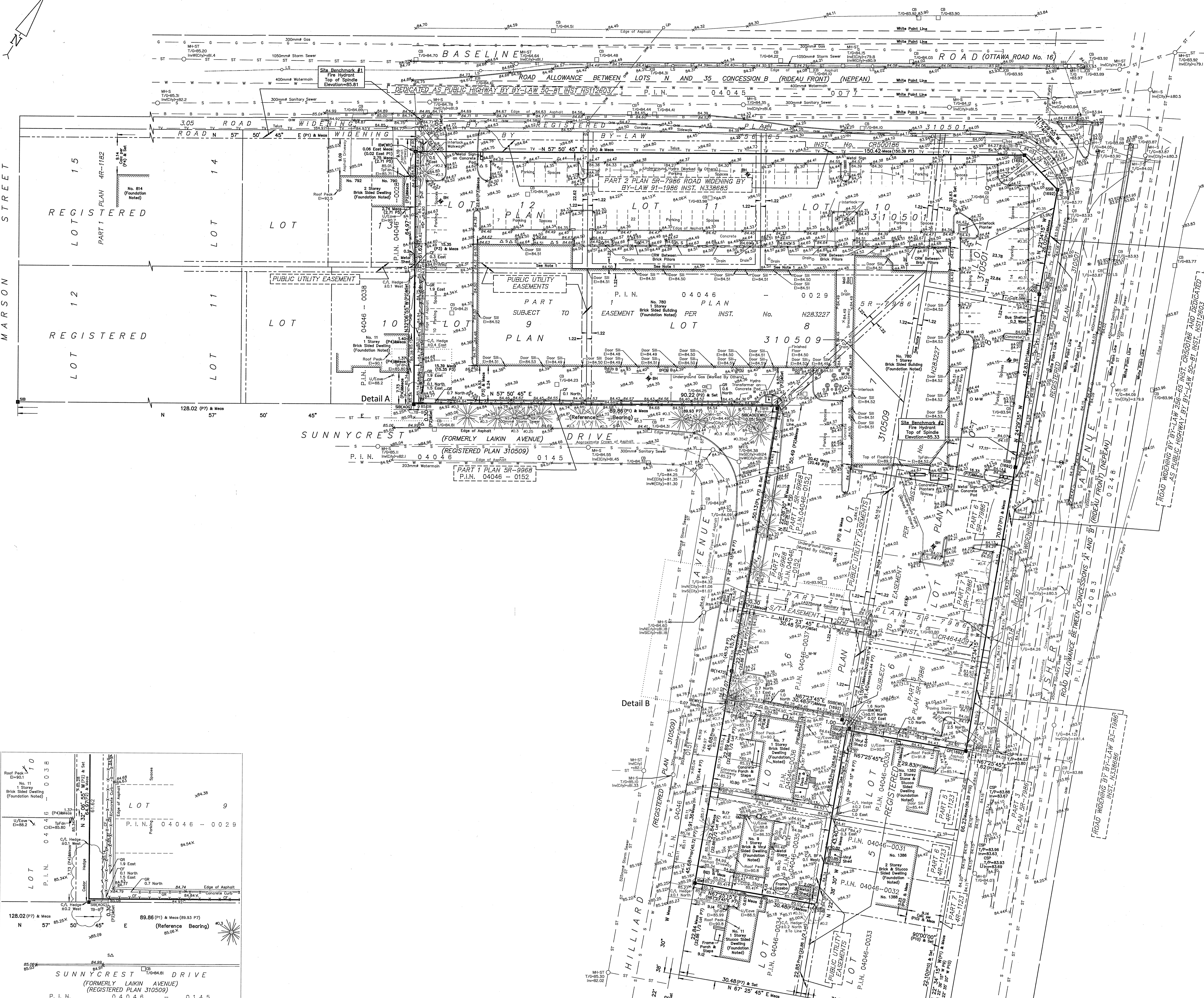
**Notes & Legend**

	Survey Monument Planted
	Survey Monument Found
	Standard Iron Bar
	Short Standard Iron Bar
	Iron Bar
	Round Iron Bar
	Concrete Pin
	Witness
	Measured
	Plan 5R-7986
	Plan 5R-9968
	Plan by (AOG) dated April 22, 1986
	Plan by (AOG) dated May 28, 1993 (Ref. No. D-132-93)
	Plan by (671) dated April 26, 1963 (Ref. No. OT310501-3)
	Records of 1692 (Ref. No. 151-131)
	Registered Plan 310509
	Plans (725) dated June 2, 1965 (Ref. No. 284-65)
	Registered Plan 310501
	Plan 4R-1123
	Notes by (1287) dated August 30, 2002
	Notes by (647) Reference 15-310509
	Notes by (647) dated May 21, 1963
	Underground Sanitary Sewer
	Underground Water
	Underground Storm Sewer
	Underground Power
	Underground Gas
	Underground Soil
	Underground Lighting
	Overhead Wires
	Utility Pole
	Anchor
	Light Standard
	Catch Basin
	Corrugated Steel Pipe
	Fire Hydrant
	Fire Hydrant Valve
	Water Valve
	Gas Meter
	Handhole
	Bell Terminal Box
	Sign
	Air Conditioner
	Refuse Container
	Monitoring Well
	Shed
	Board Fence
	Concrete Fence
	Concrete Retaining Wall
	Invert
	Invert from City of Ottawa Utility Plans
	Top of Pipe
	Top of Grate
	Ditch Centreline
	Underside of Eave
	Top of Foundation
	Centreline
	Not To Scale
	Location of Elevations
	Top of Concrete Curb/Retaining Wall Elevation
	Property Line
	Deciduous Tree
	Coniferous Tree

The symbol shown denotes location and trunk diameter only. Size of its root system/overhead canopy may be smaller/larger than the symbol size depicted on this plan.

**Site Area=15688.6 sq.m.**

**Note 1**  
Section of "Public Utility Easements" that is subject to easement CR310572.



**Revision Note**  
Revised to show topographic information at No. 7 and No. 9 Hilliard Avenue. Fieldwork was completed on the 9th day of February, 2023.  
Date Feb 23/23  
Jamie Leslie  
Ontario Land Surveyor

**Surveyor's Certificate**  
I certify that:  
1. This survey and plan are correct and in accordance with the Surveys Act, the Surveyors Act and the Regulations made under them.  
2. The survey was completed on the 26th day of April, 2022.  
Date April 27, 2022  
Jamie Leslie  
Ontario Land Surveyor

This plan of survey relates to AOLS Plan Submission Form Number V-25555  
**FARLEY, SMITH & DENIS SURVEYING LTD.**  
ONTARIO LAND SURVEYORS  
CANADA LAND SURVEYORS

Unit 275, 30 COLONNADE ROAD, OTTAWA, ONTARIO K2E 7J6  
TEL: (613) 727-8226 E-mail: fdsurveys@bellsouth.ca

WARNING: NO PERSON MAY COPY, REPRODUCE, DISTRIBUTE OR ALTER THIS PLAN IN WHOLE OR IN PART WITHOUT THE WRITTEN PERMISSION OF FARLEY, SMITH & DENIS SURVEYING LTD. © FARLEY, SMITH & DENIS SURVEYING LTD., 2023.  
FILE NO.: 26-23