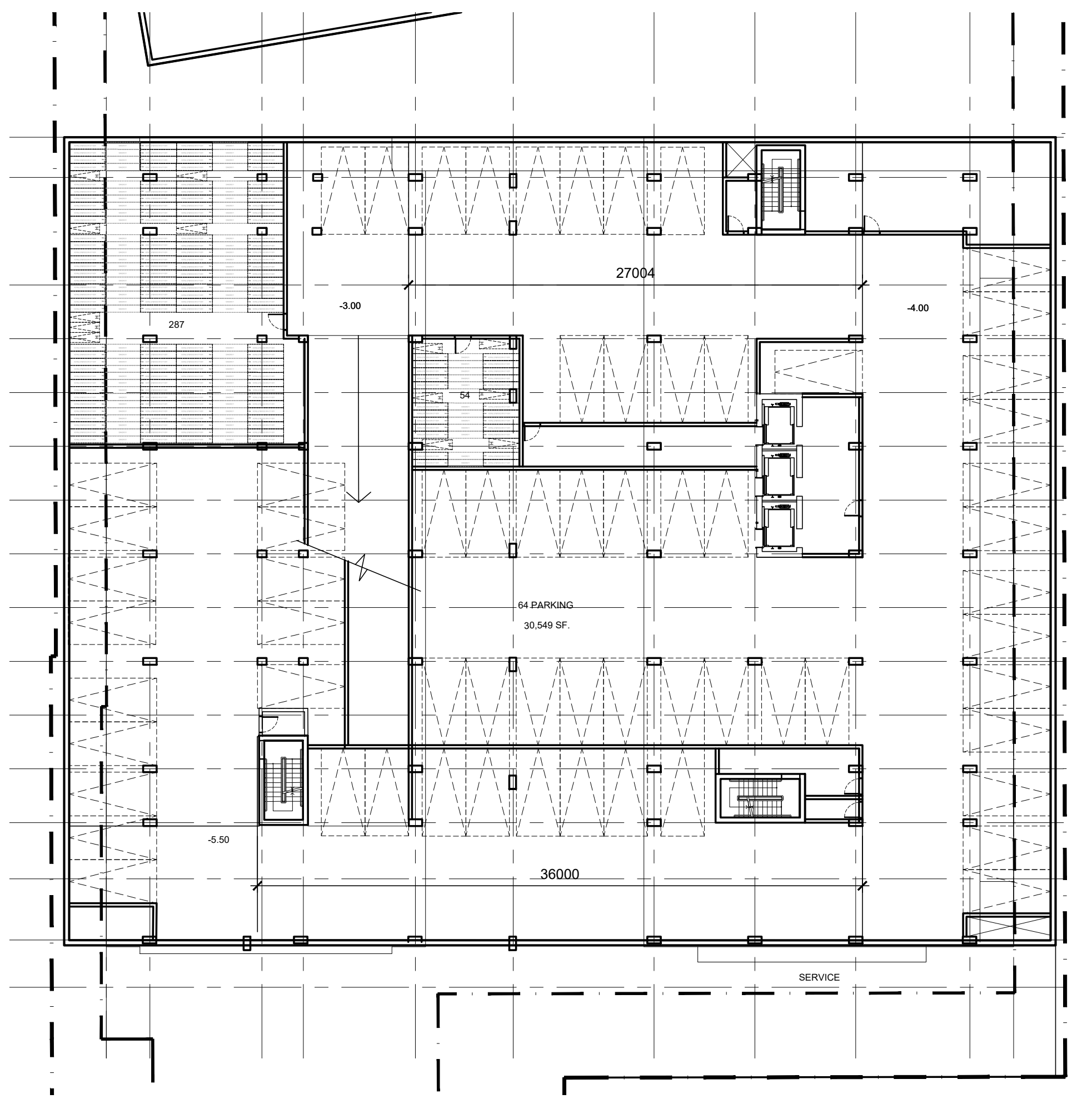
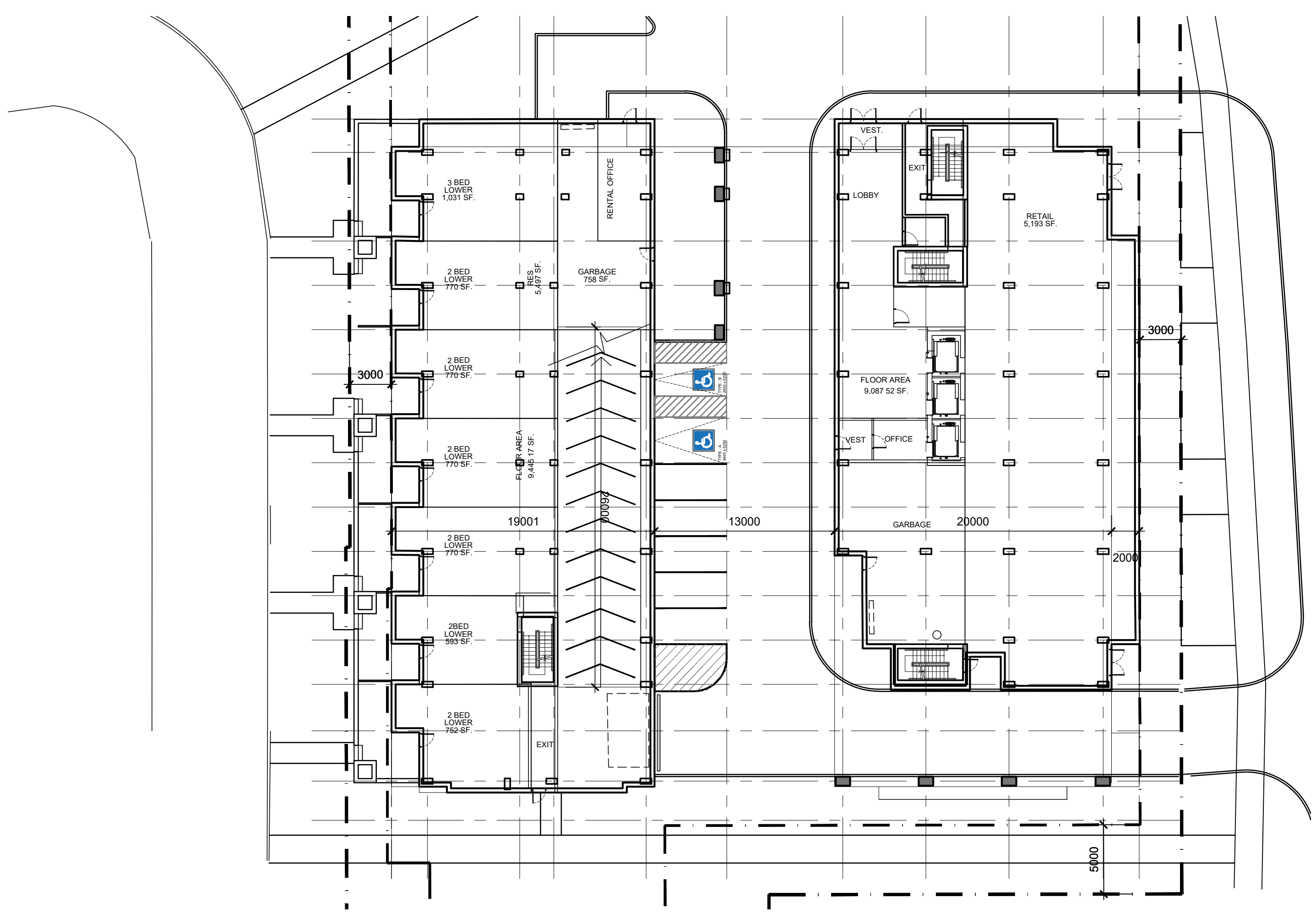


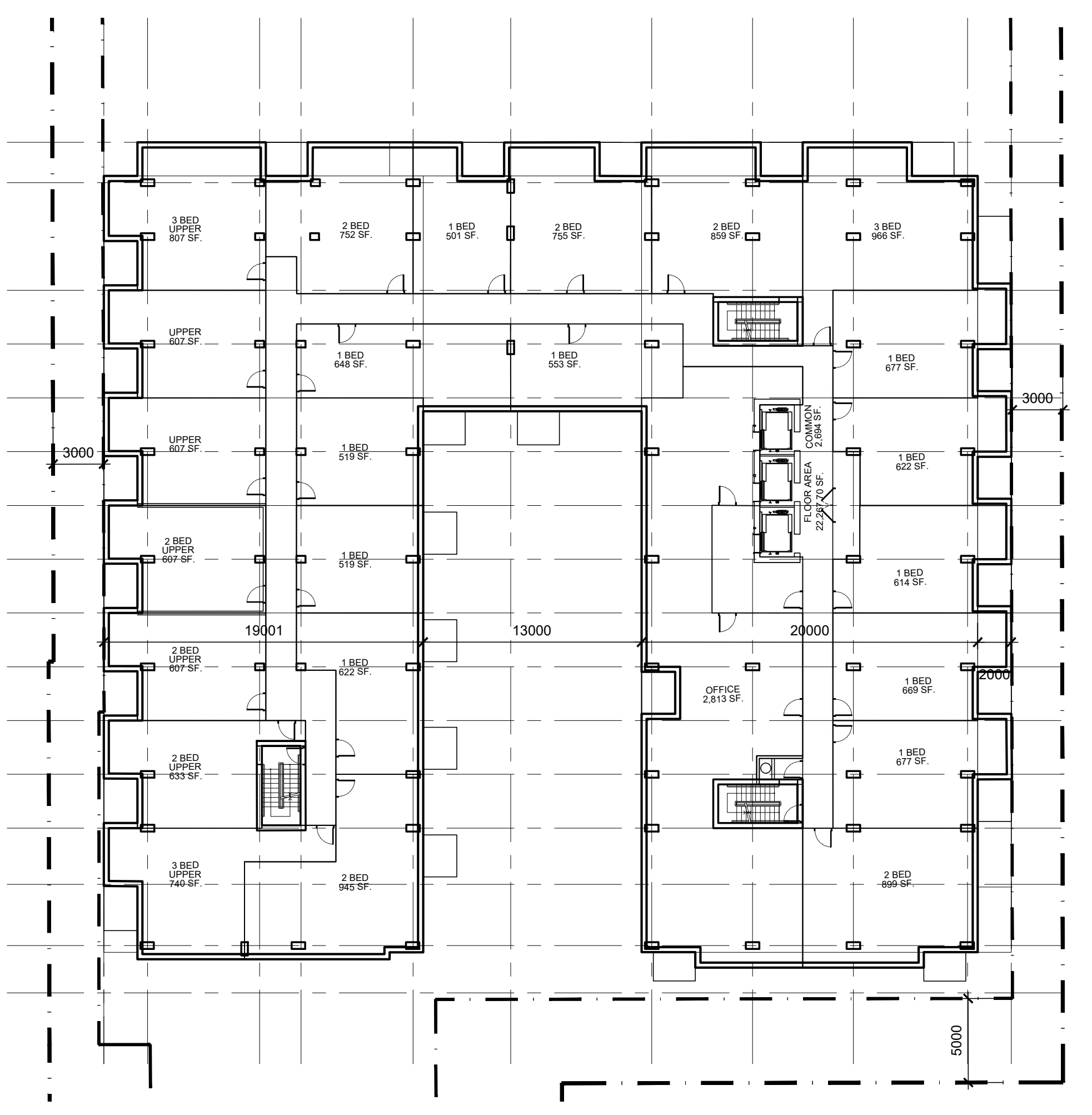
01 P2 LEVEL FLOOR PLAN



02 P1 LEVEL FLOOR PLAN



03 GROUND LEVEL FLOOR PLAN



04 LEVEL 2 FLOOR PLAN

IT IS THE RESPONSIBILITY OF THE APPROPRIATE CONTRACTOR TO CHECK AND VERIFY ALL DIMENSIONS ON SITE AND TO REPORT ALL ERRORS AND/OR OMISSIONS TO THE ARCHITECT.
 ALL CONTRACTORS MUST COMPLY WITH ALL PERTINENT CODES AND BY-LAWS.
 THIS DRAWING MAY NOT BE USED FOR CONSTRUCTION UNTIL SIGNED BY THE ARCHITECT.
 DO NOT SCALE DRAWINGS.
 COPYRIGHT RESERVED.

NOTATION SYMBOLS:

- (N) INDICATES DRAWING NOTES, LISTED ON EACH SHEET.
- (A) INDICATES ASSEMBLY TYPE; REFER TO TYPICAL ASSEMBLIES SCHEDULE.
- (W) INDICATES WINDOW TYPE; REFER TO WINDOW ELEVATIONS AND DETAILS ON A800 SERIES.
- (D) INDICATES DOOR TYPE; REFER TO DOOR SCHEDULE AND DETAILS ON A800 SERIES.
- (-) DETAIL NUMBER
- (T) TITLE
- (S) SCALE
- (R) DETAIL REFERENCE PAGE
- (C) DETAIL CROSS REFERENCE PAGE

No.	DESCRIPTION	DATE
1	ISSUED FOR SPC APPLICATION	June 09, 23
2	ISSUED FOR OWNER / CONSULTANT REVIEW	April 13, 23

ARCHITECT SEAL: **RODERICK LAHEY ARCHITECTS**
 ARCHITECT: **RODERICK LAHEY**
 LICENSE: 4375
 SEAL DATE: STAMP DATE

NORTH ARROW:

CLIENT: **THEBERGE HOMES**
 Theberge Developments Ltd.

ARCHITECT: **RODERICK LAHEY ARCHITECT INC**
 56 Beech Street, Ottawa, Ontario K1S 3J6
 1.613.724.9932 1.613.724.1209 www.rodericklahey.ca

PROJECT TITLE:
780 Baseline Road PHASE ONE

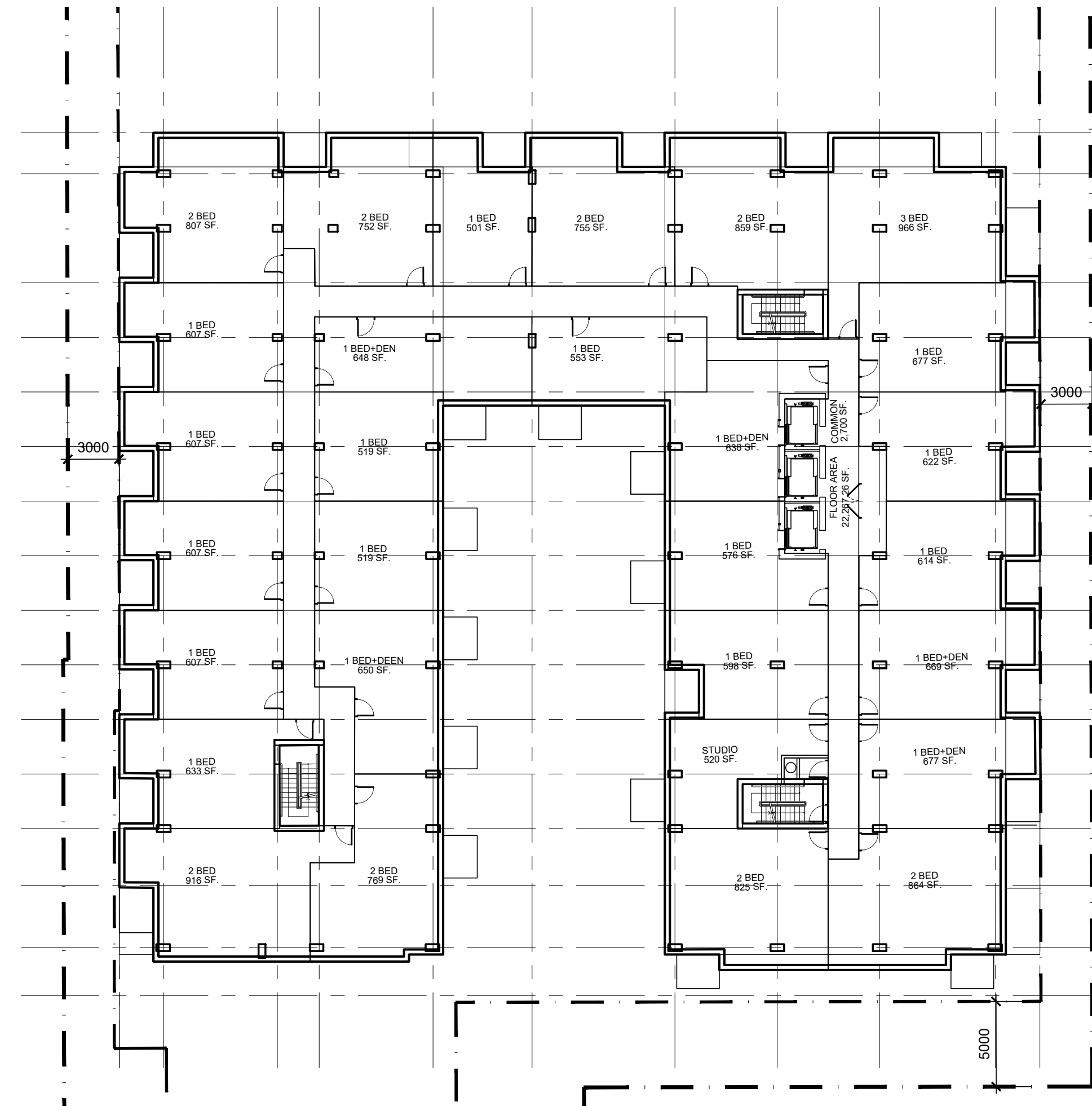
OTTAWA ONTARIO

SHEET TITLE:
FLOOR PLANS

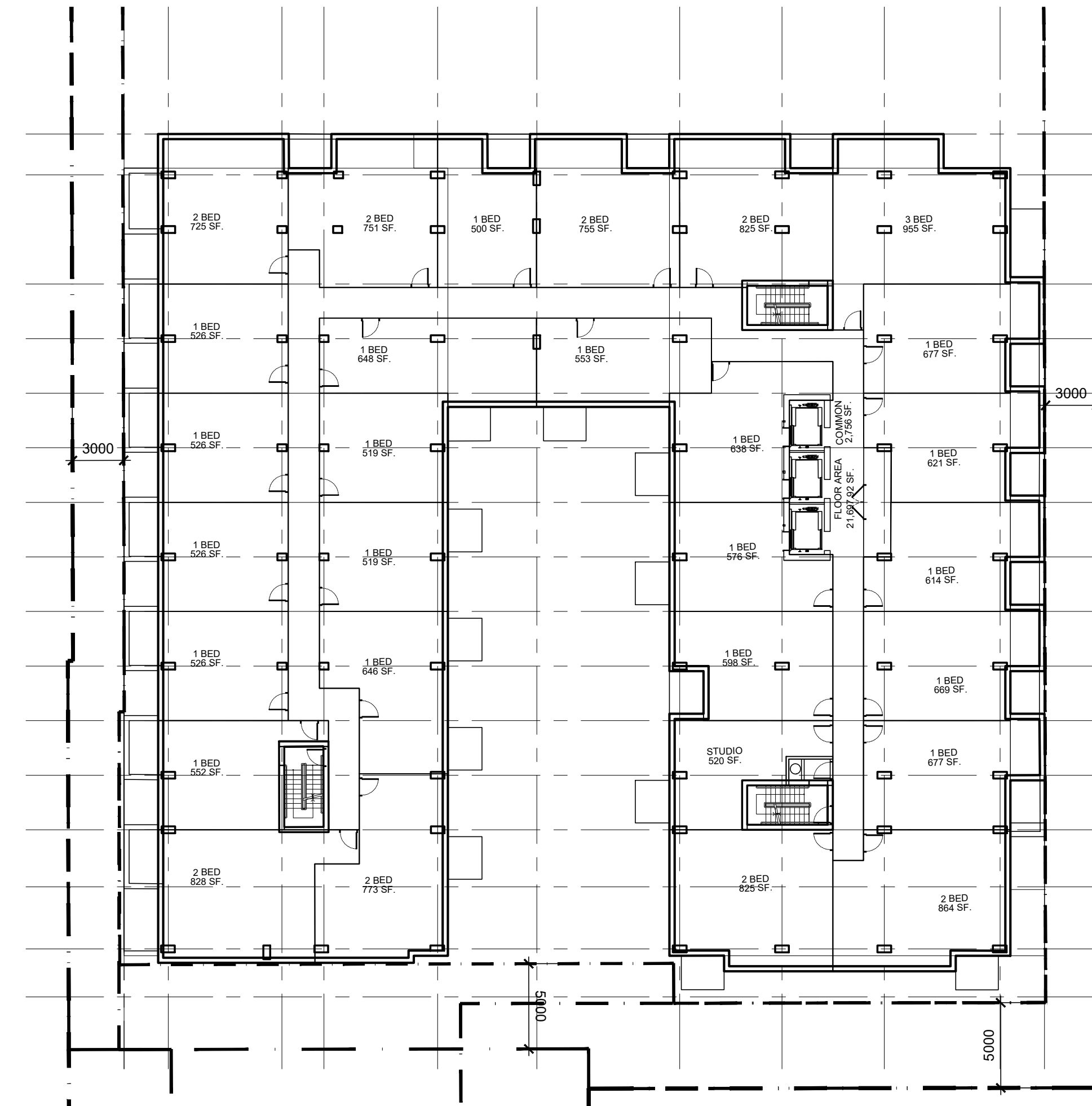
DRAWN: T.Z.	CHECKED: T.Z.
SCALE: 1:250	SHEET No. A100
PROJECT No. 2131	

Plan No.: #

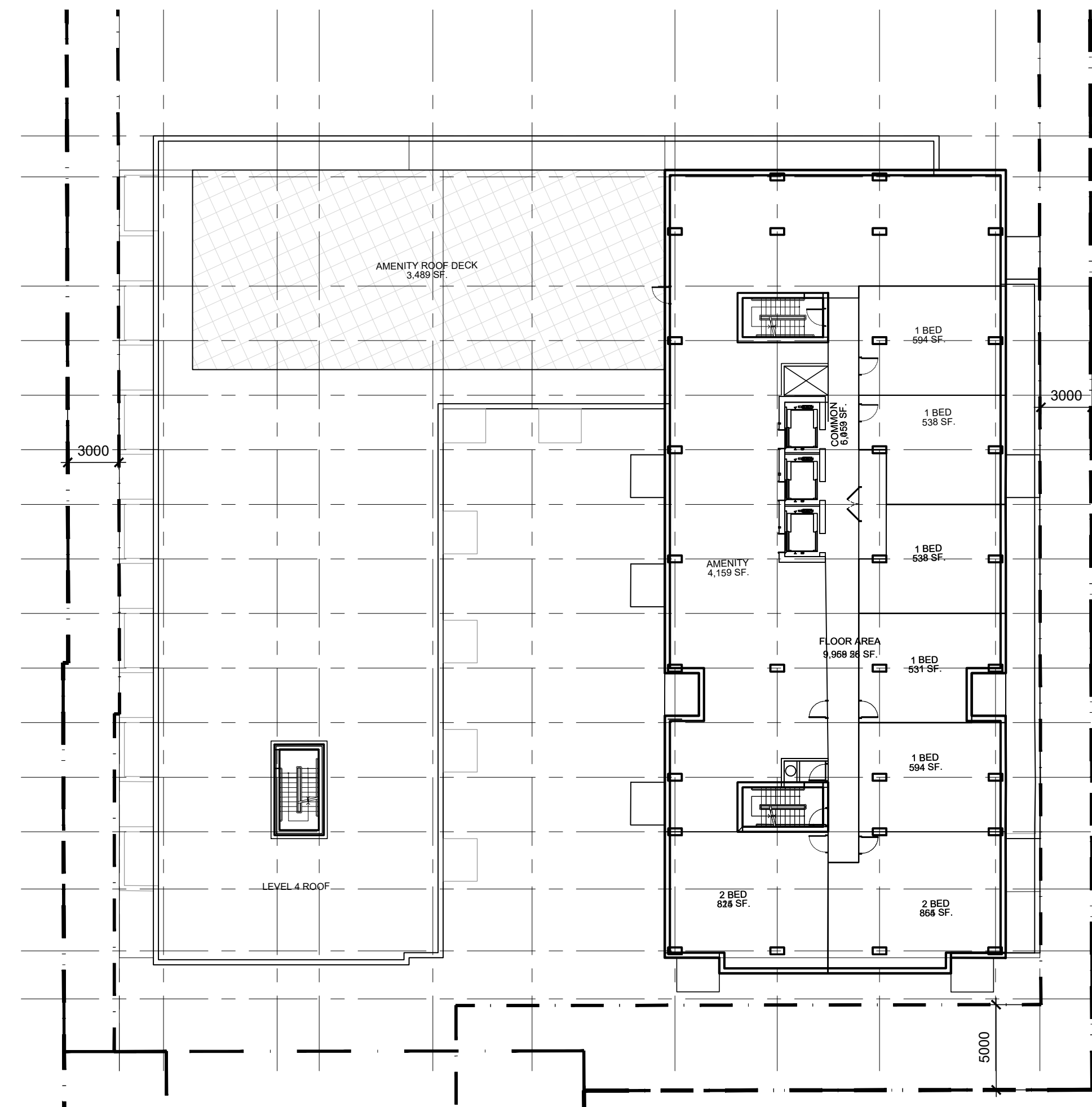
PAPER SIZE: ISO Full Bleed B1 (707.00 X 1000.00 MM) PEN STYLE: RLA.cab
 F:\2021\2131 - Baseline & Fisher\01 Design Development\02 Concept Design\01 CAD\2131 - 780 Baseline Plan 2023 04 05 Plans.dwg PLOT SCALE: 1:1
 D07-12-



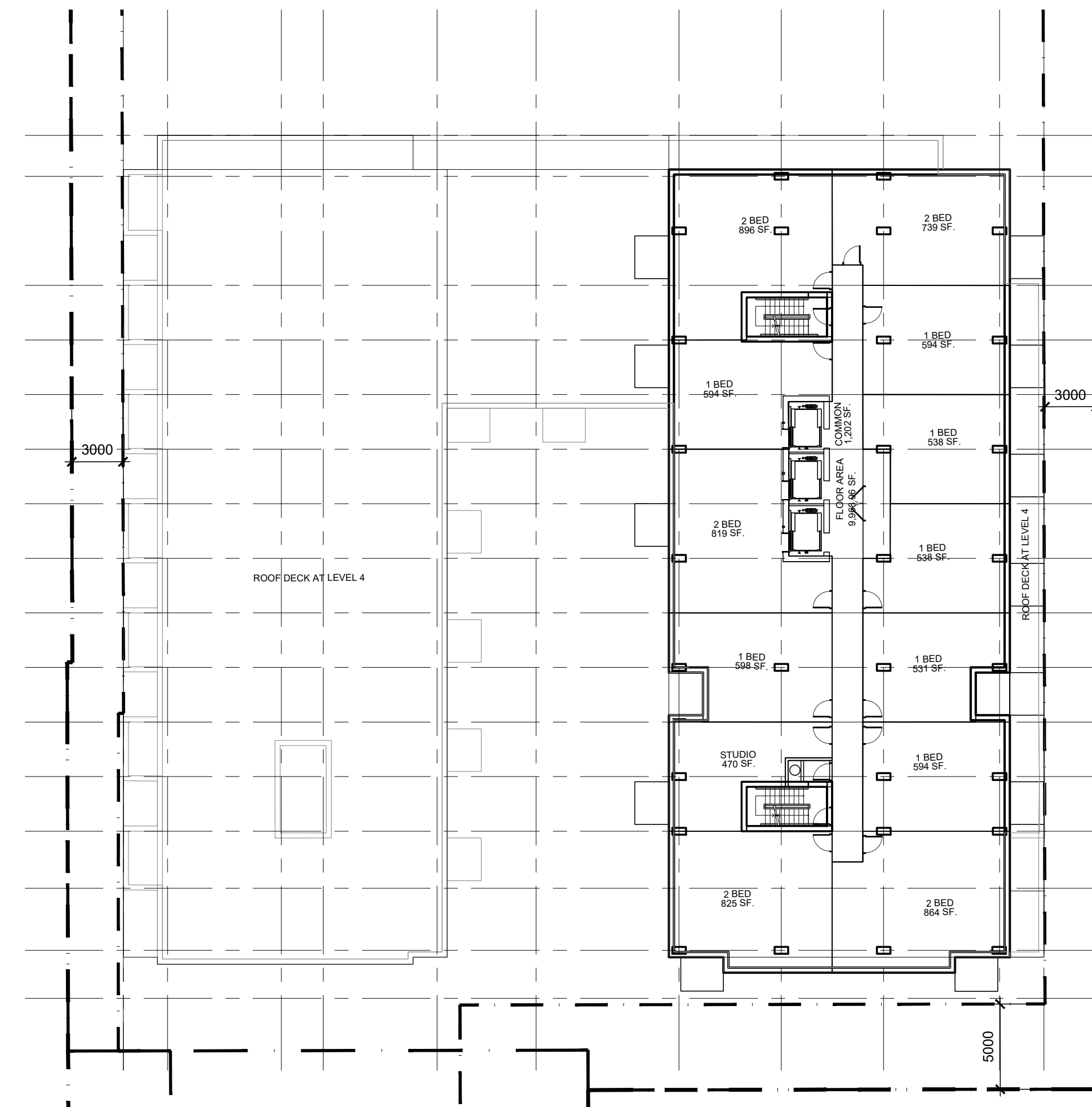
01 LEVEL 3
- FLOOR PLAN



02 LEVEL 4
- FLOOR PLAN



03 LEVEL 5
- FLOOR PLAN



04 LEVEL 6-20
- FLOOR PLAN

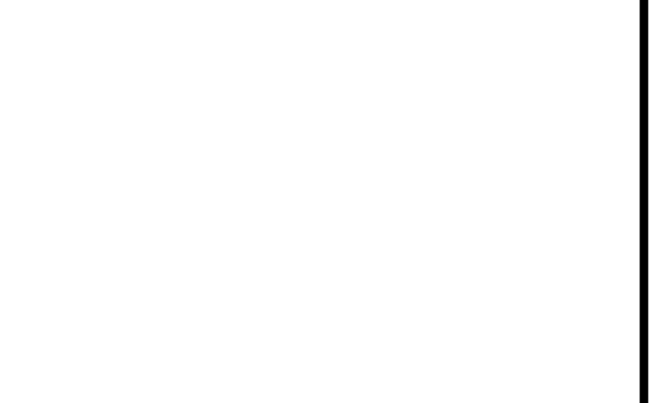
IT IS THE RESPONSIBILITY OF THE APPROPRIATE CONTRACTOR TO CHECK AND VERIFY ALL DIMENSIONS ON SITE AND TO REPORT ALL ERRORS AND/OR OMISSIONS TO THE ARCHITECT.
ALL CONTRACTORS MUST COMPLY WITH ALL PERTINENT CODES AND BY-LAWS.
THIS DRAWING MAY NOT BE USED FOR CONSTRUCTION UNTIL SIGNED BY THE ARCHITECT.
DO NOT SCALE DRAWINGS.
COPYRIGHT RESERVED.

NOTATION SYMBOLS:

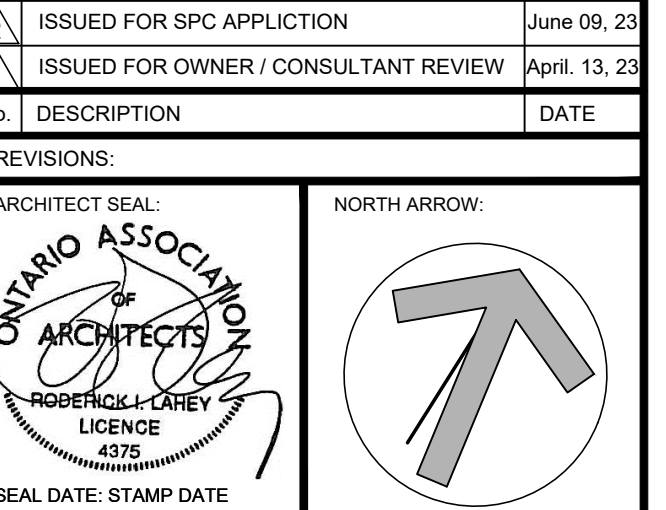
- ① INDICATES DRAWING NOTES, LISTED ON EACH SHEET.
- ⦿ INDICATES ASSEMBLY TYPE: REFER TO TYPICAL ASSEMBLY SCHEDULE.
- ⊕ INDICATES WINDOW TYPE: REFER TO WINDOW ELEVATIONS AND DETAILS ON A500 SERIES.
- ⦿ INDICATES DOOR TYPE: REFER TO DOOR SCHEDULE AND DETAILS ON A500 SERIES.
- DETAIL NUMBER
- ① TITLE
2022 SCALE
—●— DETAIL REFERENCE PAGE
① DETAIL CROSS REFERENCE PAGE

No.	DESCRIPTION	DATE
1	ISSUED FOR SPC APPLICATION	June 09, 23
2	ISSUED FOR OWNER / CONSULTANT REVIEW	April 13, 23

No.	DESCRIPTION	DATE



ARCHITECT SEAL:
ONTARIO ASSOCIATION OF ARCHITECTS
RODERICK LAHEY
LICENCE 4375
SEAL DATE: STAMP DATE



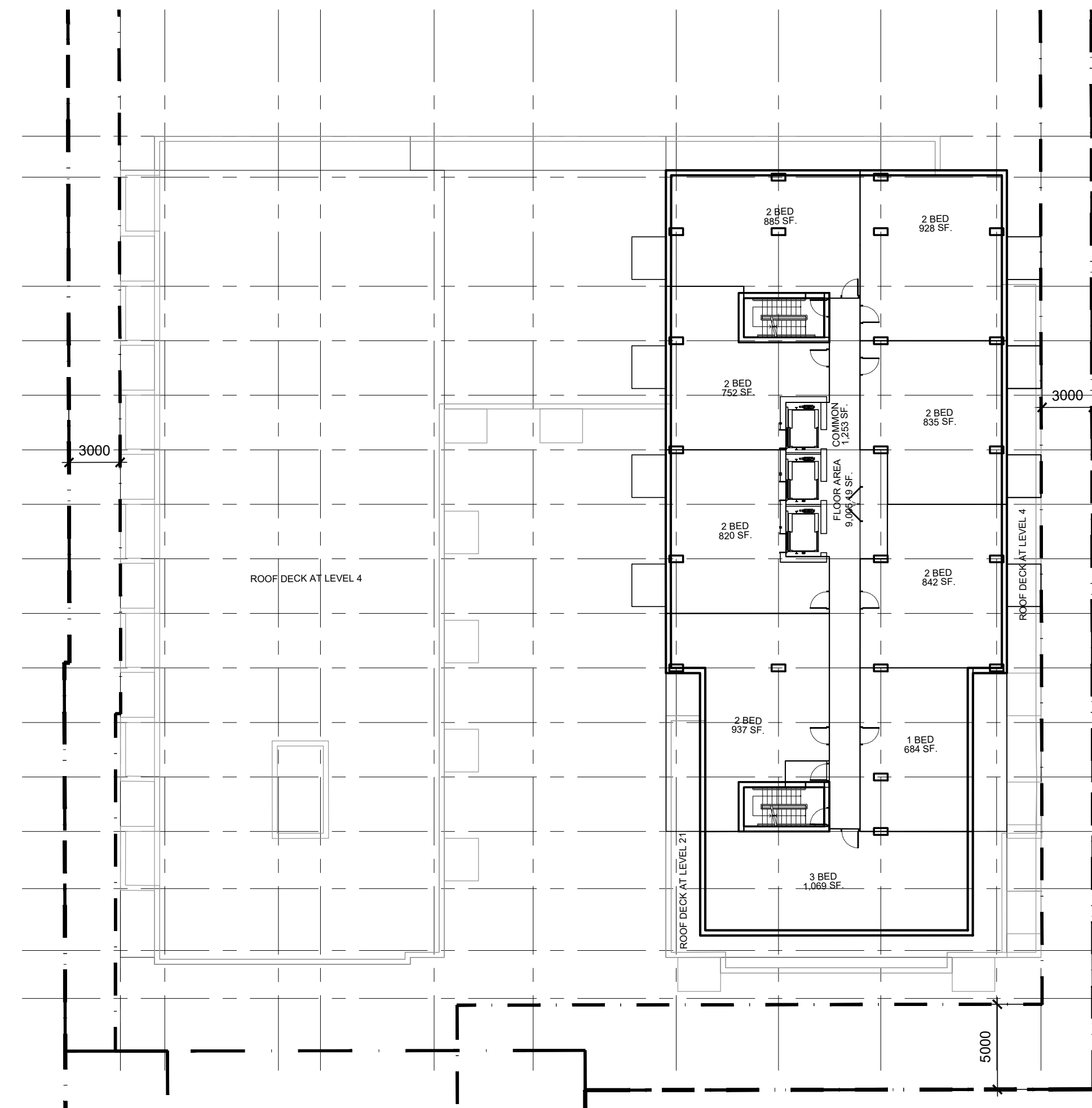
ARCHITECT:
RODERICK LAHEY ARCHITECT INC
56 Beech Street, Ottawa, Ontario K1S 3J6
1.613.724.7932 1.613.724.1209 www.rodericklahey.ca

PROJECT TITLE:
780 Baseline Road PHASE ONE

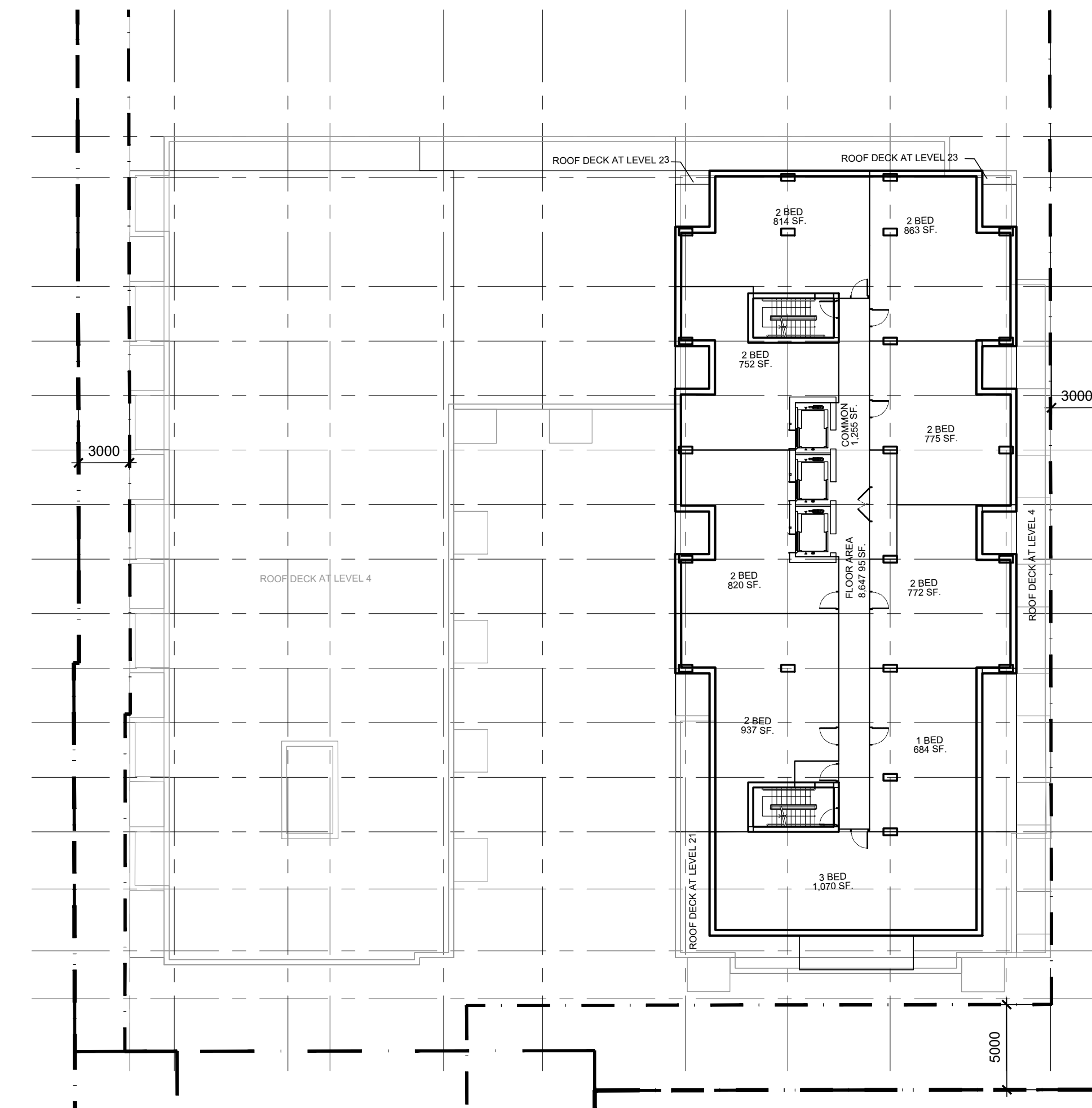
OTTAWA ONTARIO

SHEET TITLE:
FLOOR PLANS

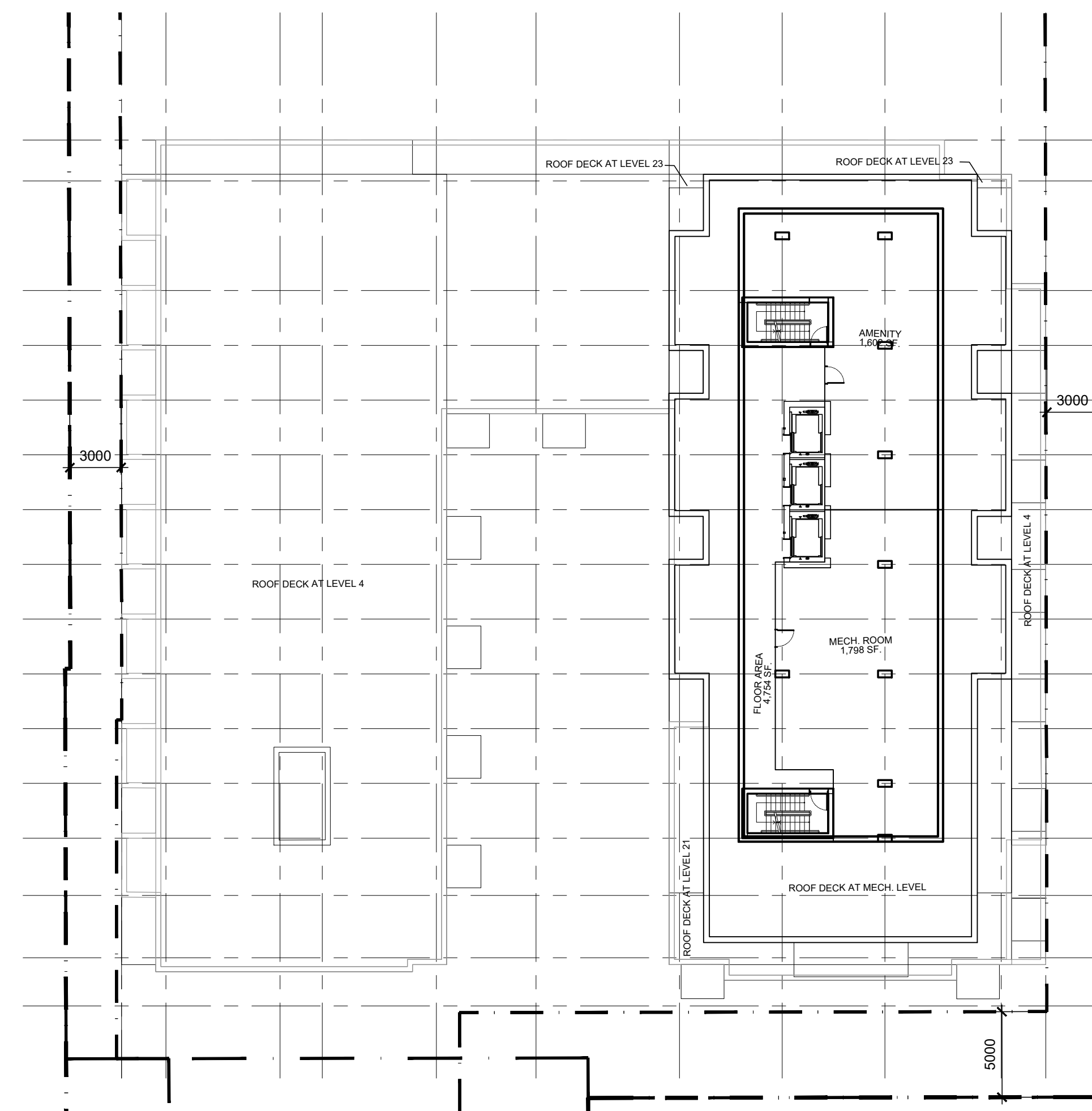
DRAWN: T.Z.	CHECKED: T.Z.
SCALE: 1:250	SHEET No. A101
PROJECT No. 2131	



01 LEVEL 21-22
- FLOOR PLAN



02 LEVEL 23-24
- FLOOR PLAN



03 MECH. LEVEL
- FLOOR PLAN

IT IS THE RESPONSIBILITY OF THE APPROPRIATE CONTRACTOR TO CHECK AND VERIFY ALL DIMENSIONS ON SITE AND TO REPORT ALL ERRORS AND/OR OMISSIONS TO THE ARCHITECT.
ALL CONTRACTORS MUST COMPLY WITH ALL PERTINENT CODES AND BY-LAWS.
THIS DRAWING MAY NOT BE USED FOR CONSTRUCTION UNTIL SIGNED BY THE ARCHITECT.
DO NOT SCALE DRAWINGS.
COPYRIGHT RESERVED.

NOTATION SYMBOLS:

- (N) INDICATES DRAWING NOTES, LISTED ON EACH SHEET.
- (AS) INDICATES ASSEMBLY TYPE; REFER TO TYPICAL ASSEMBLIES SCHEDULE.
- (W) INDICATES WINDOW TYPE; REFER TO WINDOW ELEVATIONS AND DETAILS ON A900 SERIES.
- (D) INDICATES DOOR TYPE; REFER TO DOOR SCHEDULE AND DETAILS ON A900 SERIES.
- DETAIL NUMBER
- (S) TITLE
- SCALE
- DETAIL REFERENCE PAGE
- DETAIL CROSS REFERENCE PAGE

No.	DESCRIPTION	DATE
1	ISSUED FOR SPC APPLICATION	June 09, 23
2	ISSUED FOR OWNER / CONSULTANT REVIEW	April 13, 23

REVISIONS:

--	--

ARCHITECT SEAL: NORTH ARROW:
 RODERICK LAHEY ARCHITECTS INC.
 LICENSE 4375
 SEAL DATE: STAMP DATE

CLIENT:

Theberge Developments Ltd.

ARCHITECT:
RODERICK LAHEY
 ARCHITECT INC
 56 Beech Street, Ottawa, Ontario K1S 3J6
 1.613.724.9932 1.613.724.1209 www.rodericklahey.ca

PROJECT TITLE:
780 Baseline Road
PHASE ONE

OTTAWA ONTARIO

SHEET TITLE:
FLOOR PLANS

DRAWN: T.Z.	CHECKED: T.Z.
SCALE: 1:250	SHEET No. A102
PROJECT No. 2131	

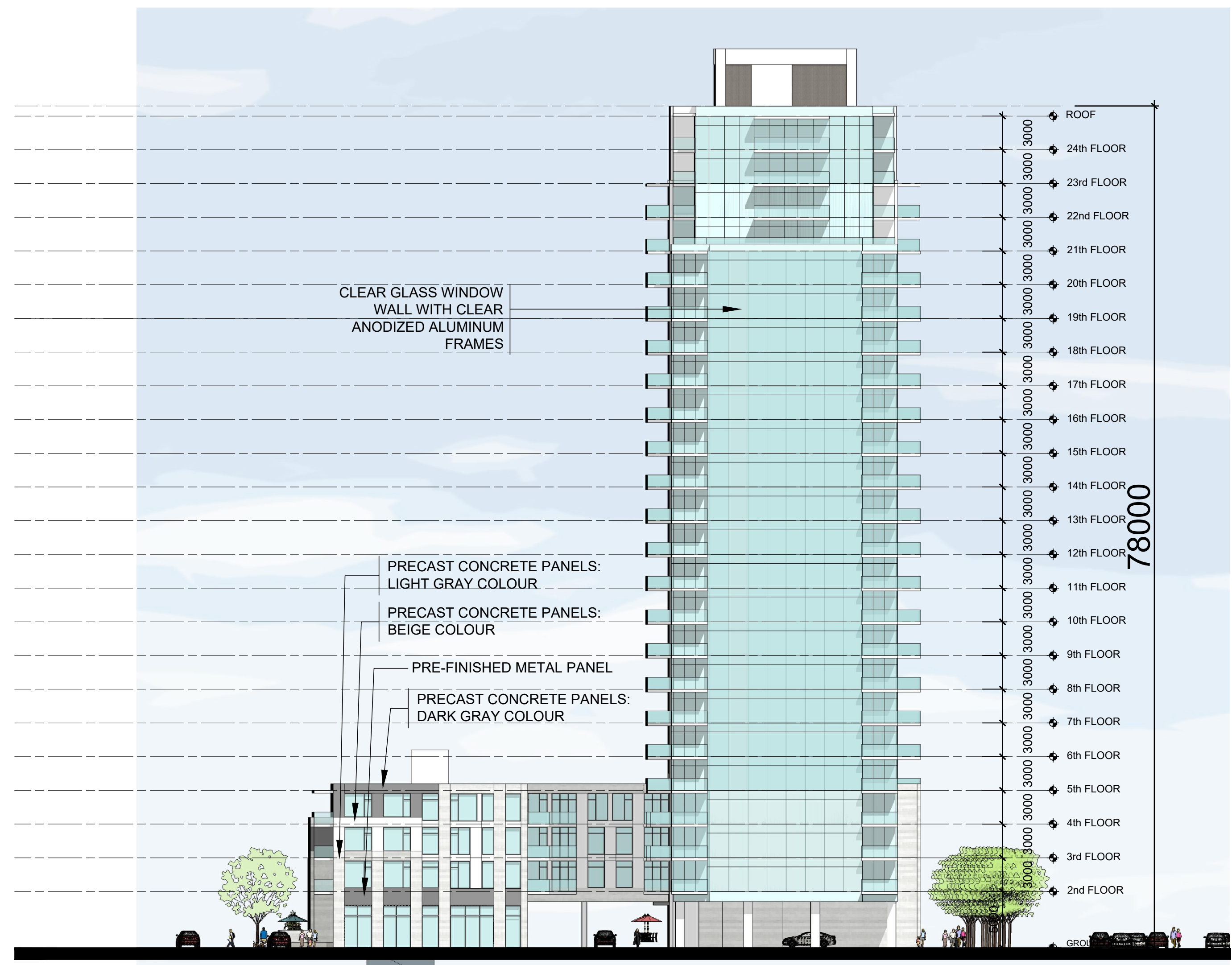
Plan No.: # _____

IT IS THE RESPONSIBILITY OF THE APPROPRIATE CONTRACTOR TO CHECK AND VERIFY ALL DIMENSIONS ON SITE AND TO REPORT ALL ERRORS AND/OR OMISSIONS TO THE ARCHITECT.
 ALL CONTRACTORS MUST COMPLY WITH ALL PERTINENT CODES AND BY-LAWS.
 THIS DRAWING MAY NOT BE USED FOR CONSTRUCTION UNTIL SIGNED BY THE ARCHITECT.
 DO NOT SCALE DRAWINGS.
 COPYRIGHT RESERVED.

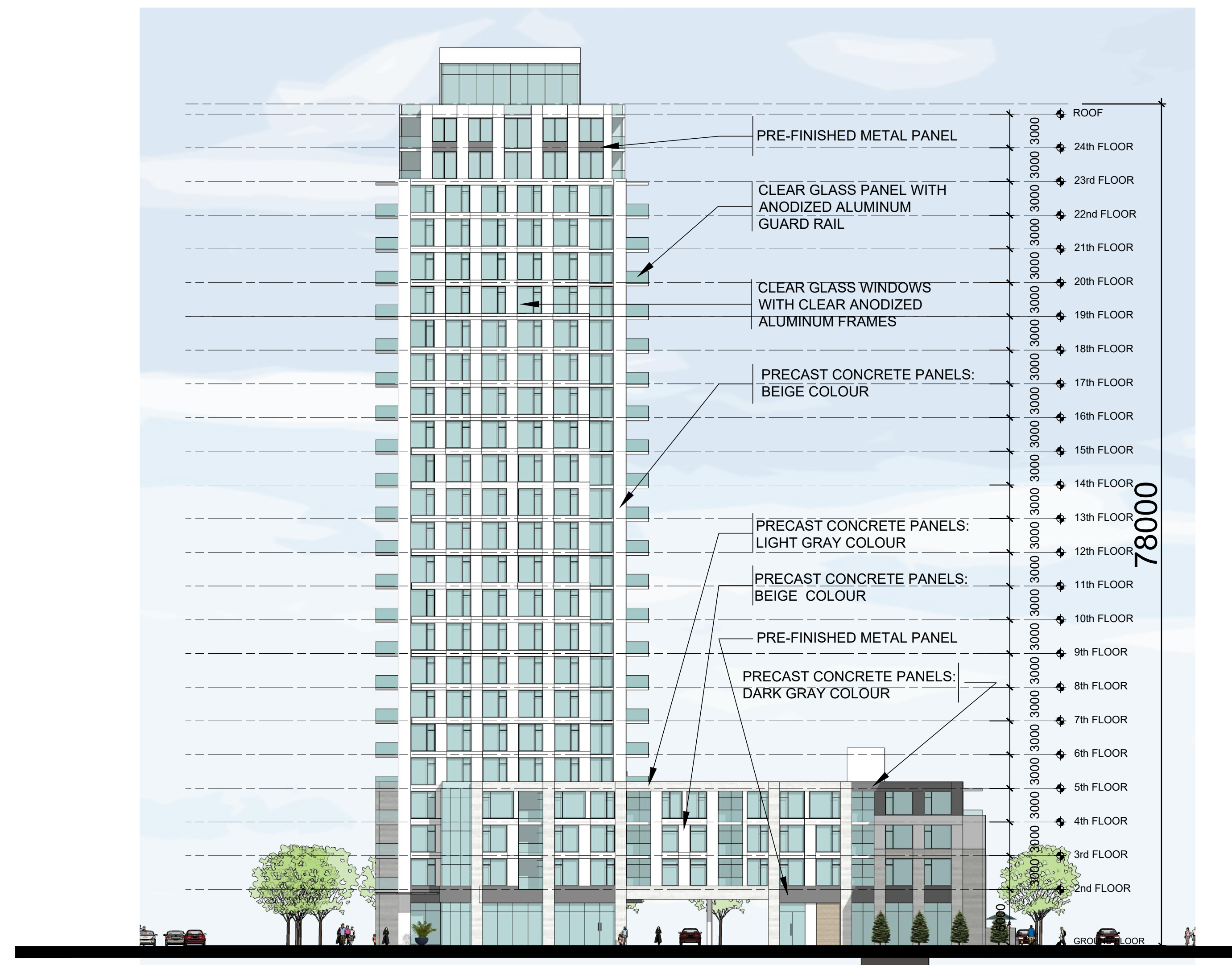
NOTATION SYMBOLS:

- (01) INDICATES DRAWING NOTES, LISTED ON EACH SHEET.
- (02) INDICATES ASSEMBLY TYPE; REFER TO TYPICAL ASSEMBLIES SCHEDULE.
- (03) INDICATES WINDOW TYPE; REFER TO WINDOW ELEVATIONS AND DETAILS ON A300 SERIES.
- (04) INDICATES DOOR TYPE; REFER TO DOOR SCHEDULE AND DETAILS ON A300 SERIES.

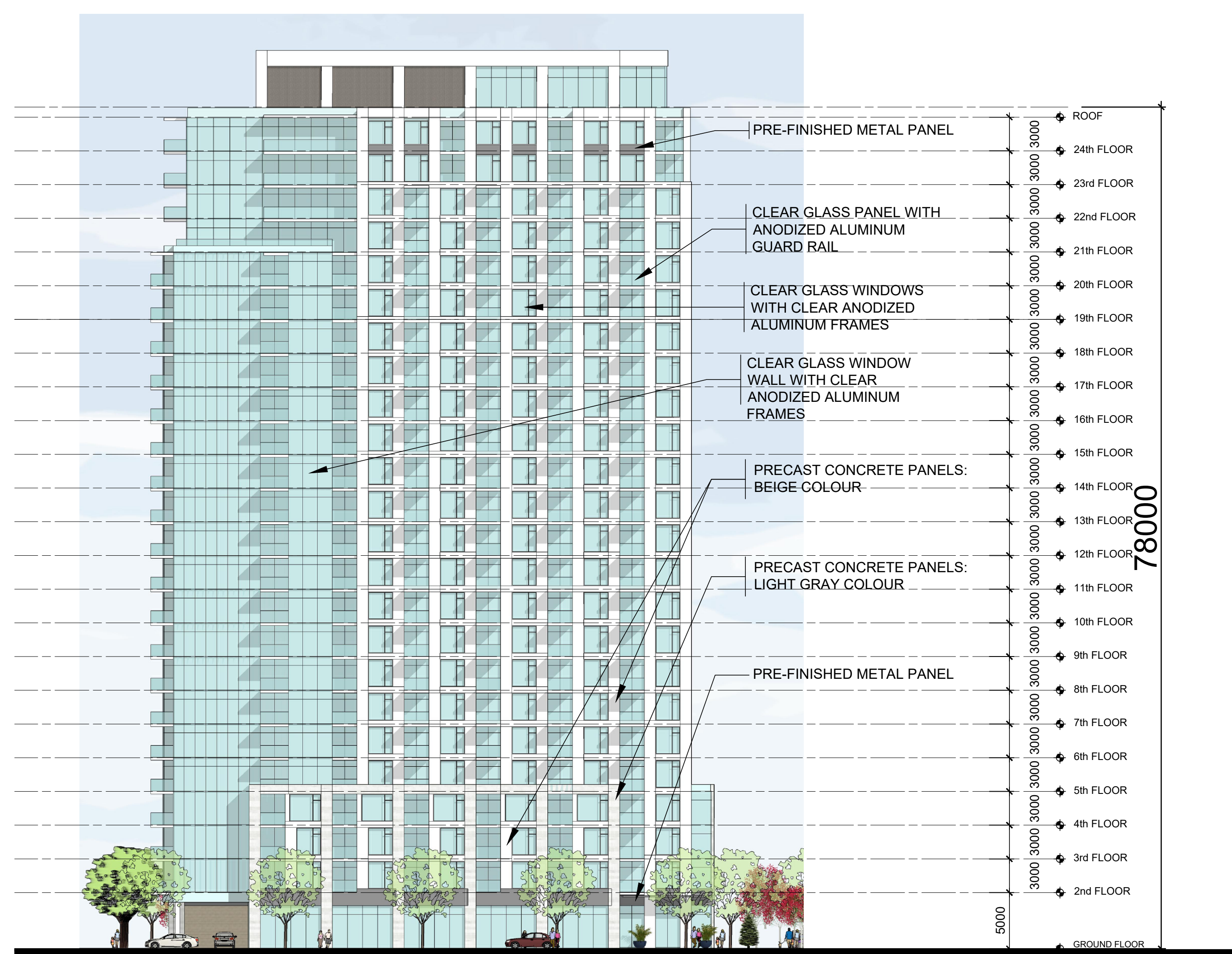
— DETAIL NUMBER
 — TITLE — SCALE
 — DETAIL REFERENCE PAGE
 — DETAIL CROSS REFERENCE PAGE



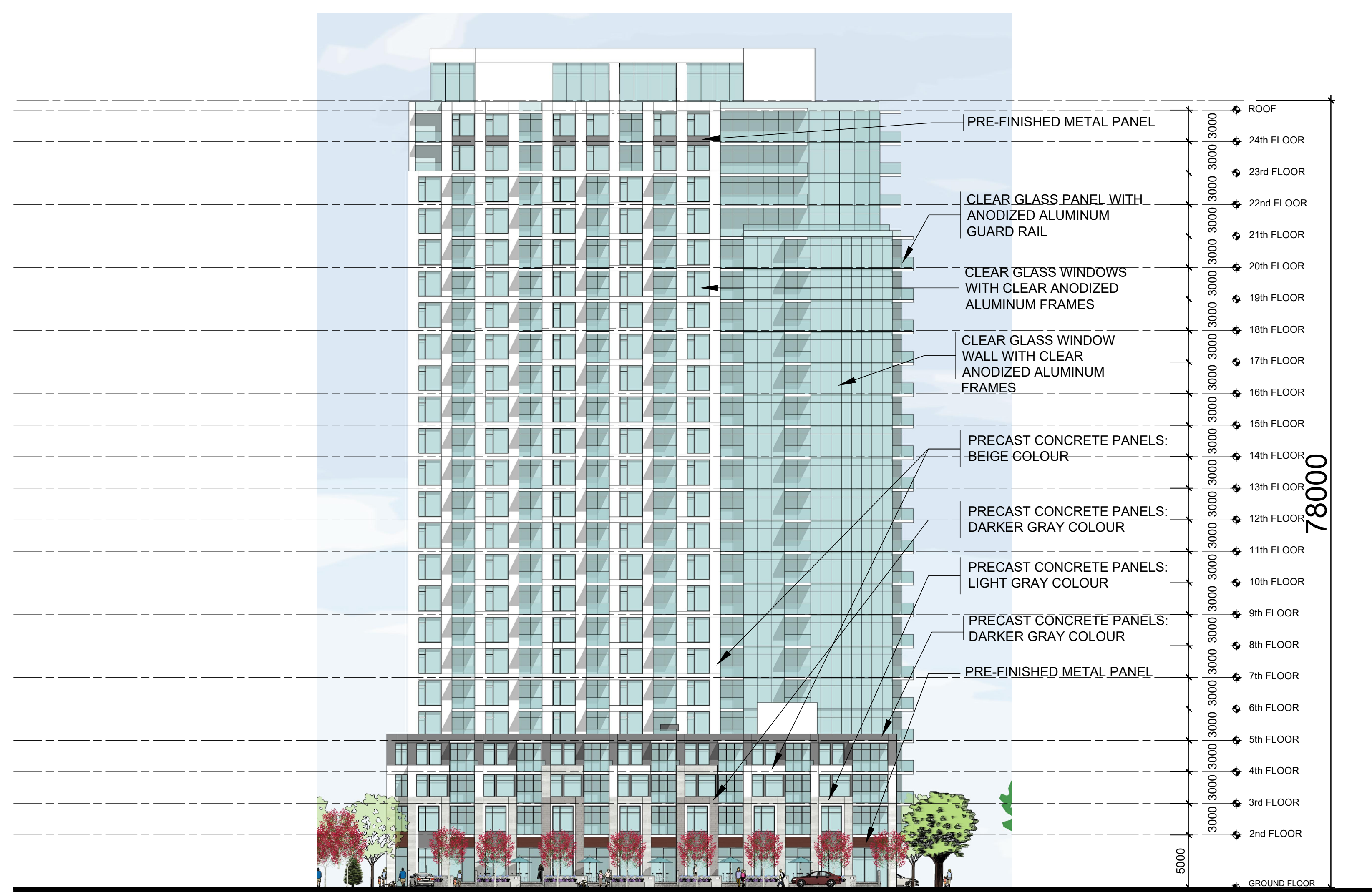
01 SOUTH ELEVATION
 - BUILDING A



02 NORTH ELEVATION
 - BUILDING A



03 EAST ELEVATION
 - BUILDING A



04 WEST ELEVATION
 - BUILDING A

ISSUED FOR SPC APPLICATION		June 09, 23
ISSUED FOR OWNER / CONSULTANT REVIEW		April 13, 23
No.	DESCRIPTION	DATE
REVISIONS:		
ARCHITECT SEAL:		NORTH ARROW:
CLIENT:		
 Theberge Developments Ltd.		
ARCHITECT:		
RODERICK LAHEY ARCHITECT INC 56 Beech Street, Ottawa, Ontario K1S 3J6 1.613.724.9932 1.613.724.1209 www.rodericklahey.ca		
PROJECT TITLE:		
780 Baseline Road PHASE ONE		
OTTAWA		ONTARIO
SHEET TITLE:		
BUILDING A ELEVATIONS		
DRAWN:	CHECKED:	
T.Z.	T.Z.	
SCALE:	SHEET No.	
1:300		A200
PROJECT No:		
2131		



01 VIEW SOUTHWEST FROM BASELINE ROAD
- PERSPECTIVE VIEW



02 VIEW SOUTH FROM FISHER AVENUE
- PERSPECTIVE VIEW



03 VIEW NORTH FROM HILLIARD AVENUE
- PERSPECTIVE VIEW



04 VIEW EAST FROM BASELINE ROAD
- PERSPECTIVE VIEW

IT IS THE RESPONSIBILITY OF THE APPROPRIATE CONTRACTOR TO CHECK AND VERIFY ALL DIMENSIONS ON SITE AND TO REPORT ALL ERRORS AND/OR OMISSIONS TO THE ARCHITECT.
ALL CONTRACTORS MUST COMPLY WITH ALL PERTINENT CODES AND BY-LAWS.
THIS DRAWING MAY NOT BE USED FOR CONSTRUCTION UNTIL SIGNED BY THE ARCHITECT.
DO NOT SCALE DRAWINGS.
COPYRIGHT RESERVED.

NOTATION SYMBOLS:

- (N) INDICATES DRAWING NOTES, LISTED ON EACH SHEET.
- (A) INDICATES ASSEMBLY TYPE; REFER TO TYPICAL ASSEMBLY SCHEDULE.
- (W) INDICATES WINDOW TYPE; REFER TO WINDOW ELEVATIONS AND DETAILS ON A900 SERIES.
- (D) INDICATES DOOR TYPE; REFER TO DOOR SCHEDULE AND DETAILS ON A900 SERIES.
- (#) DETAIL NUMBER
- (#) TITLE SCALE
- (#) DETAIL REFERENCE PAGE
- (#) DETAIL CROSS REFERENCE PAGE

No.	DESCRIPTION	DATE
1	ISSUED FOR SPC APPLICATION	June 09, 23
2	ISSUED FOR OWNER / CONSULTANT REVIEW	April 13, 23

REVISIONS:

ARCHITECT SEAL: 	NORTH ARROW:
SEAL DATE: STAMP DATE	

CLIENT:

Theberge Developments Ltd.

ARCHITECT:

RODERICKLAHEY
ARCHITECT INC

56 Beech Street, Ottawa, Ontario K1S 3J6
1.613.724.9932 1.613.724.1209 www.rodericklahey.ca

PROJECT TITLE:

**780 Baseline Road
PHASE ONE**

OTTAWA ONTARIO

SHEET TITLE:

PERSPECTIVE VIEWS

DRAWN: T.Z.	CHECKED: T.Z.
SCALE: NTS	SHEET No. A300
PROJECT No. 2131	



01 VIEW NORTH FROM FISHER AVENUE
- PERSPECTIVE VIEW



02 VIEW NORTHEAST FROM KESLER AVENUE
- PERSPECTIVE VIEW



03 VIEW ENTERING SITE FROM FISHER AVENUE
- PERSPECTIVE VIEW



04 VIEW NORTH FROM HILLIARD AVENUE
- PERSPECTIVE VIEW

IT IS THE RESPONSIBILITY OF THE APPROPRIATE CONTRACTOR TO CHECK AND VERIFY ALL DIMENSIONS ON SITE AND TO REPORT ALL ERRORS AND/OR OMISSIONS TO THE ARCHITECT.
ALL CONTRACTORS MUST COMPLY WITH ALL PERTINENT CODES AND BY-LAWS.
THIS DRAWING MAY NOT BE USED FOR CONSTRUCTION UNTIL SIGNED BY THE ARCHITECT.
DO NOT SCALE DRAWINGS.
COPYRIGHT RESERVED.

NOTATION SYMBOLS:

- INDICATES DRAWING NOTES, LISTED ON EACH SHEET.
- ◇ INDICATES ASSEMBLY TYPE; REFER TO TYPICAL ASSEMBLIES SCHEDULE.
- ⊞ INDICATES WINDOW TYPE; REFER TO WINDOW ELEVATIONS AND DETAILS ON A300 SERIES.
- ⊞ INDICATES DOOR TYPE; REFER TO DOOR SCHEDULE AND DETAILS ON A300 SERIES.

○ — DETAIL NUMBER
○ — TITLE ○ — SCALE
○ — DETAIL REFERENCE PAGE
○ — DETAIL CROSS REFERENCE PAGE

No.	DESCRIPTION	DATE
1	ISSUED FOR SPC APPLICATION	June 09, 23
2	ISSUED FOR OWNER / CONSULTANT REVIEW	April 13, 23

ARCHITECT SEAL:

 NORTH ARROW:

CLIENT:

 Theberge Developments Ltd.

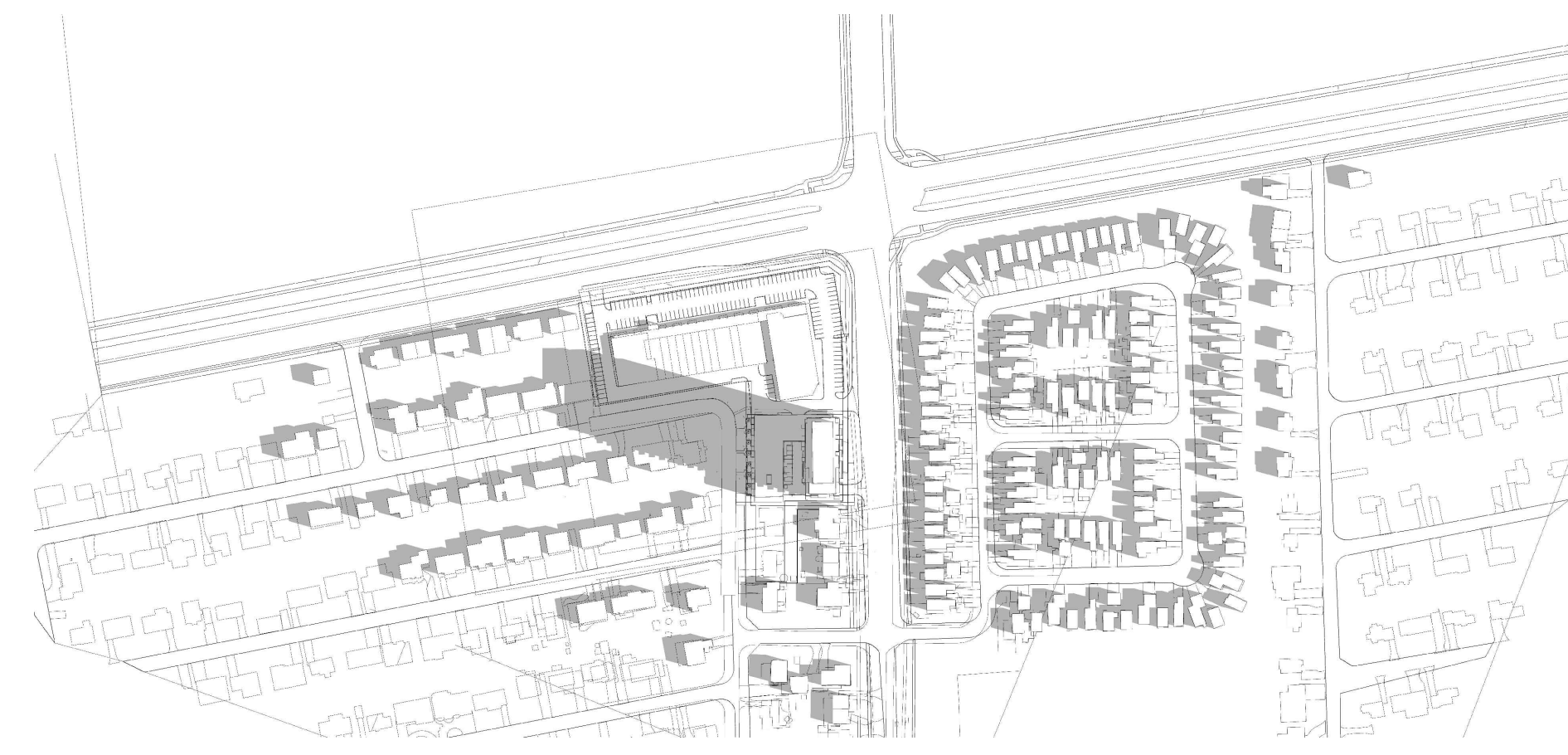
ARCHITECT:
RODERICK LAHEY
 ARCHITECT INC
 56 Beech Street, Ottawa, Ontario K1S 3J6
 1.613.724.9932 1.613.724.1209 www.roderricklahey.ca

PROJECT TITLE:
780 Baseline Road
PHASE ONE
 OTTAWA ONTARIO

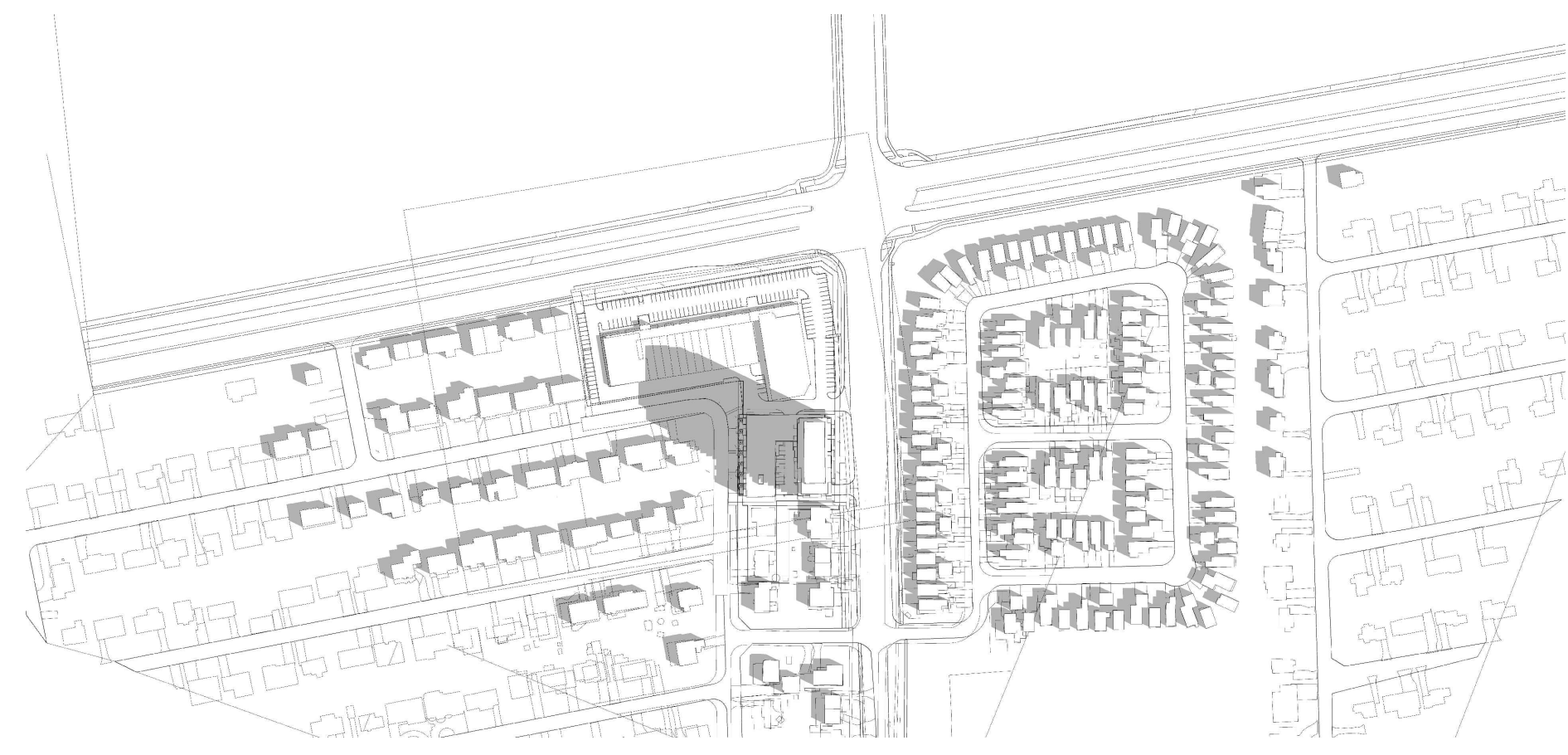
SHEET TITLE:
PERSPECTIVE VIEWS

DRAWN: T.Z.	CHECKED: T.Z.
SCALE: NTS	SHEET No. A301
PROJECT No. 2131	

JUNE 21 (DST)



8:00 AM



9:00 AM



10:00 AM



11:00 AM



12:00 PM



1:00 PM



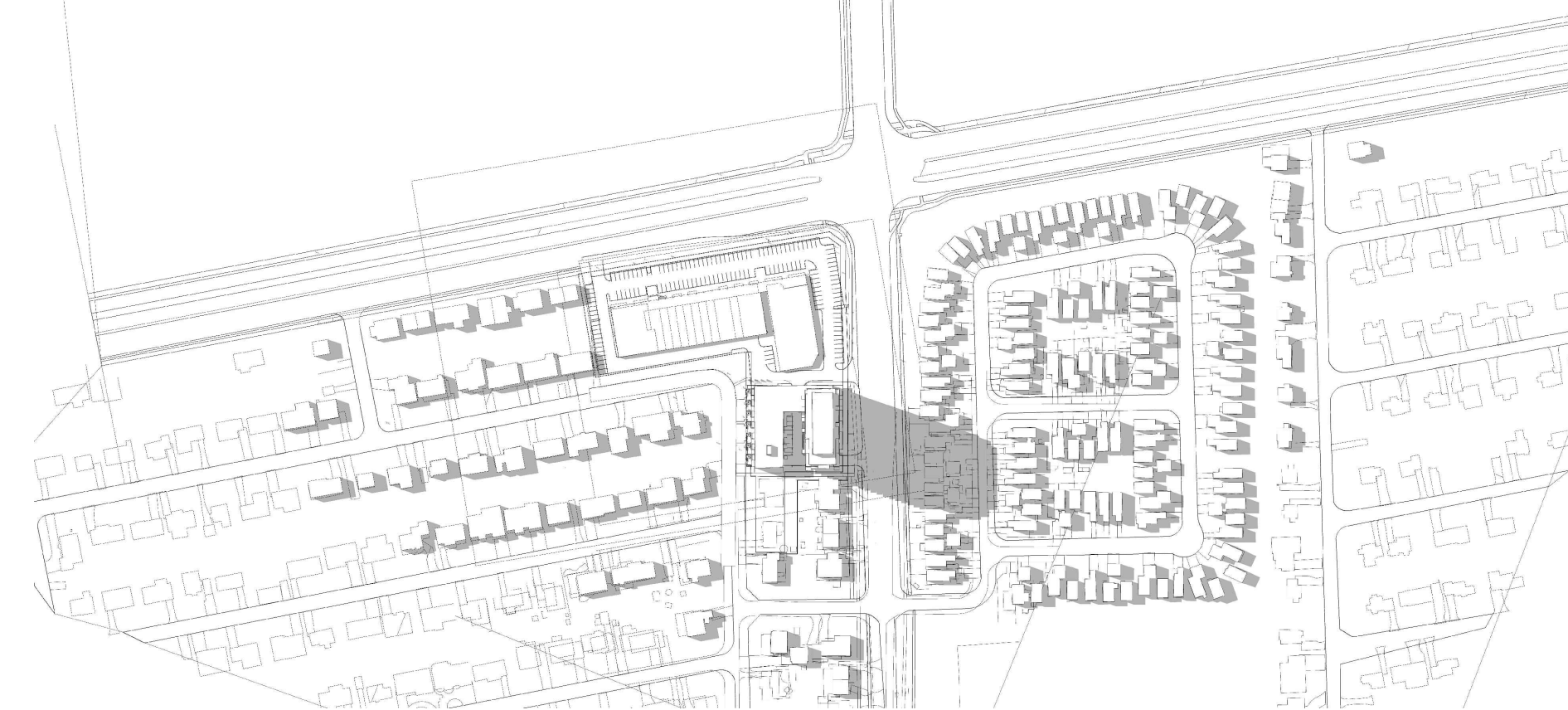
2:00 PM



3:00 PM



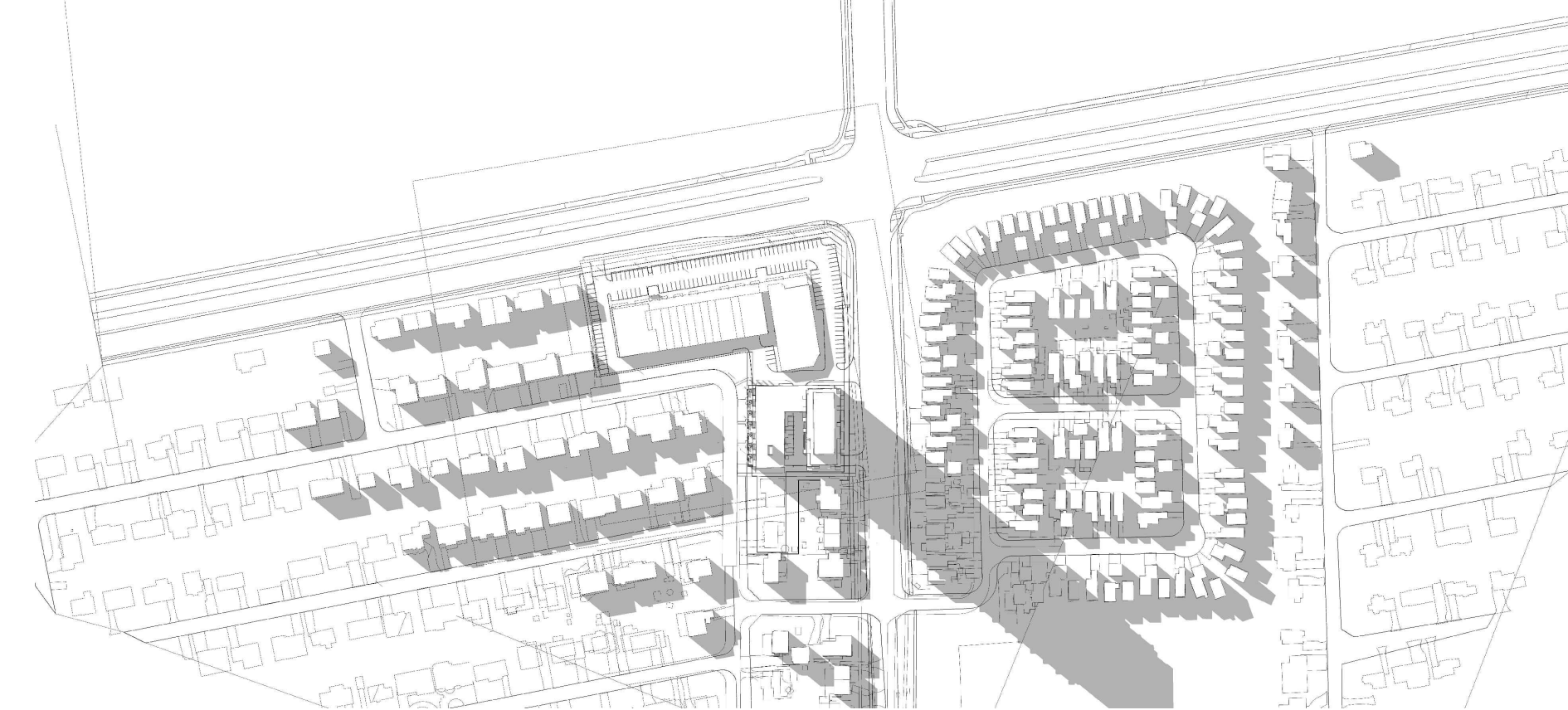
4:00 PM



5:00 PM



6:00 PM



7:00 PM



8:00 PM

IT IS THE RESPONSIBILITY OF THE APPROPRIATE CONTRACTOR TO CHECK AND VERIFY ALL DIMENSIONS ON SITE AND TO REPORT ALL ERRORS AND/OR OMISSIONS TO THE ARCHITECT.
ALL CONTRACTORS MUST COMPLY WITH ALL PERTINENT CODES AND BY-LAWS.
THIS DRAWING MAY NOT BE USED FOR CONSTRUCTION UNTIL SIGNED BY THE ARCHITECT.
DO NOT SCALE DRAWINGS.
COPYRIGHT RESERVED.

NOTATION SYMBOLS:

- INDICATES DRAWING NOTES, LISTED ON EACH SHEET.
- INDICATES ASSEMBLY TYPE; REFER TO TYPICAL ASSEMBLIES SCHEDULED.
- INDICATES WINDOW TYPE; REFER TO WINDOW ELEVATIONS AND DETAILS ON A800 SERIES.
- INDICATES DOOR TYPE; REFER TO DOOR SCHEDULE AND DETAILS ON A800 SERIES.
- DETAIL NUMBER
- TITLE
- DETAIL REFERENCE PAGE
- DETAIL CROSS REFERENCE PAGE

	ISSUED FOR SPC APPLICATION	June 09, 23
	ISSUED FOR OWNER / CONSULTANT REVIEW	April 13, 23
No.	DESCRIPTION	DATE

REVISIONS:

 ARCHITECT SEAL: RODERICK LAHEY LICENSE 4375 SEAL DATE: STAMP DATE	NORTH ARROW:
---	------------------

CLIENT:

Theberge Developments Ltd.

ARCHITECT:
RODERICK LAHEY
 ARCHITECT INC
 56 Beech Street, Ottawa, Ontario K1S 3J6
 1.613.724.9932 1.613.724.1209 www.rodericklahey.ca

PROJECT TITLE:
**780 Baseline Road
 PHASE ONE**

OTTAWA ONTARIO

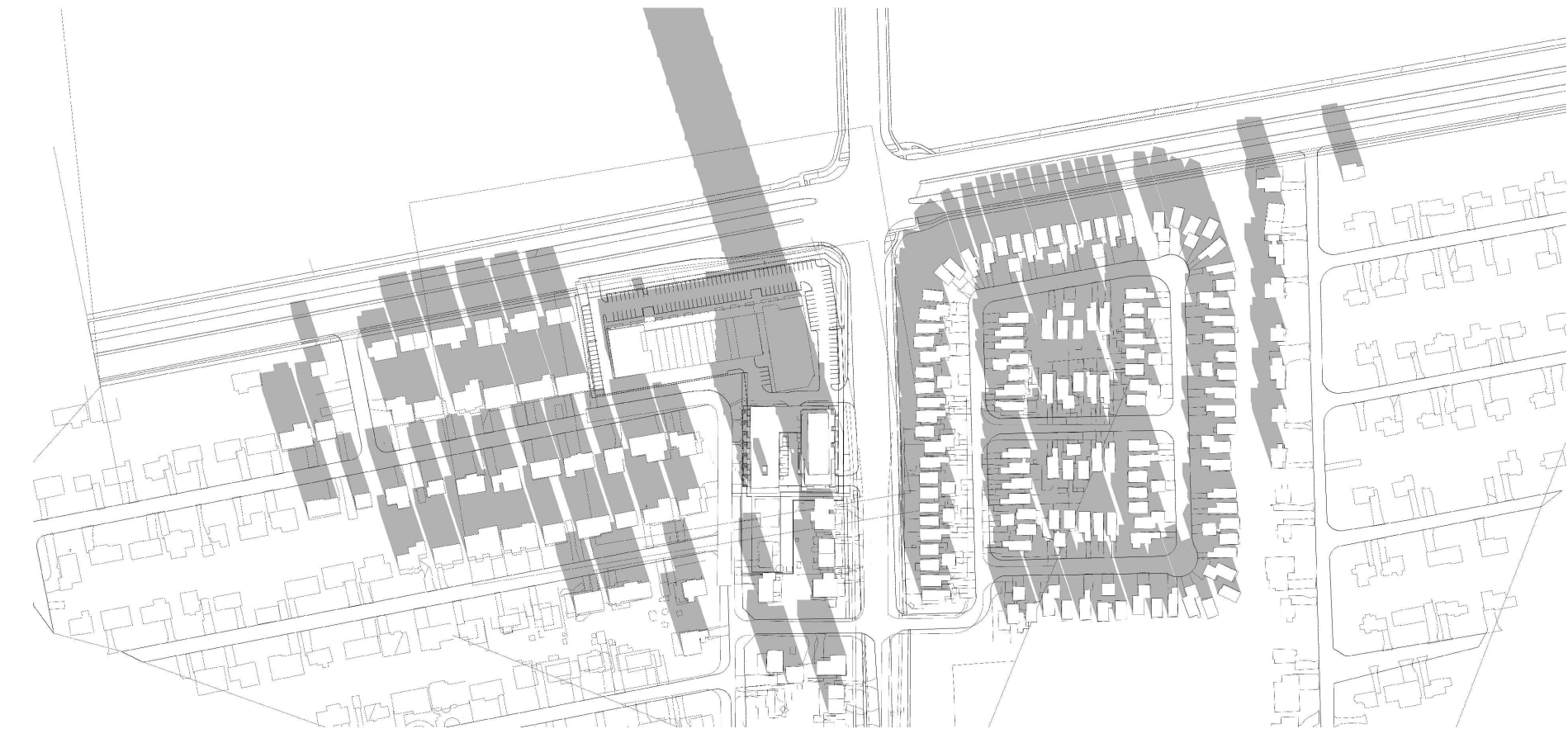
SHEET TITLE:
**SHADOW STUDY
 JUNE 21 (DST)**

DRAWN: T.Z.	CHECKED: T.Z.
SCALE: NTS	SHEET No. A400
PROJECT No. 2131	

Plan No.: #

PAPER SIZE: ISO Full Bleed B1 (707.00 X 1000.00 MM) PLOT SCALE: 1:1 F:\2021\2131 - Baseline & Fisher\01 - Baseline & Fisher\01 Design Development\02 Concept Design\01 CAD\2131 - 780 Baseline Plan 2023 04 05 Plans.dwg

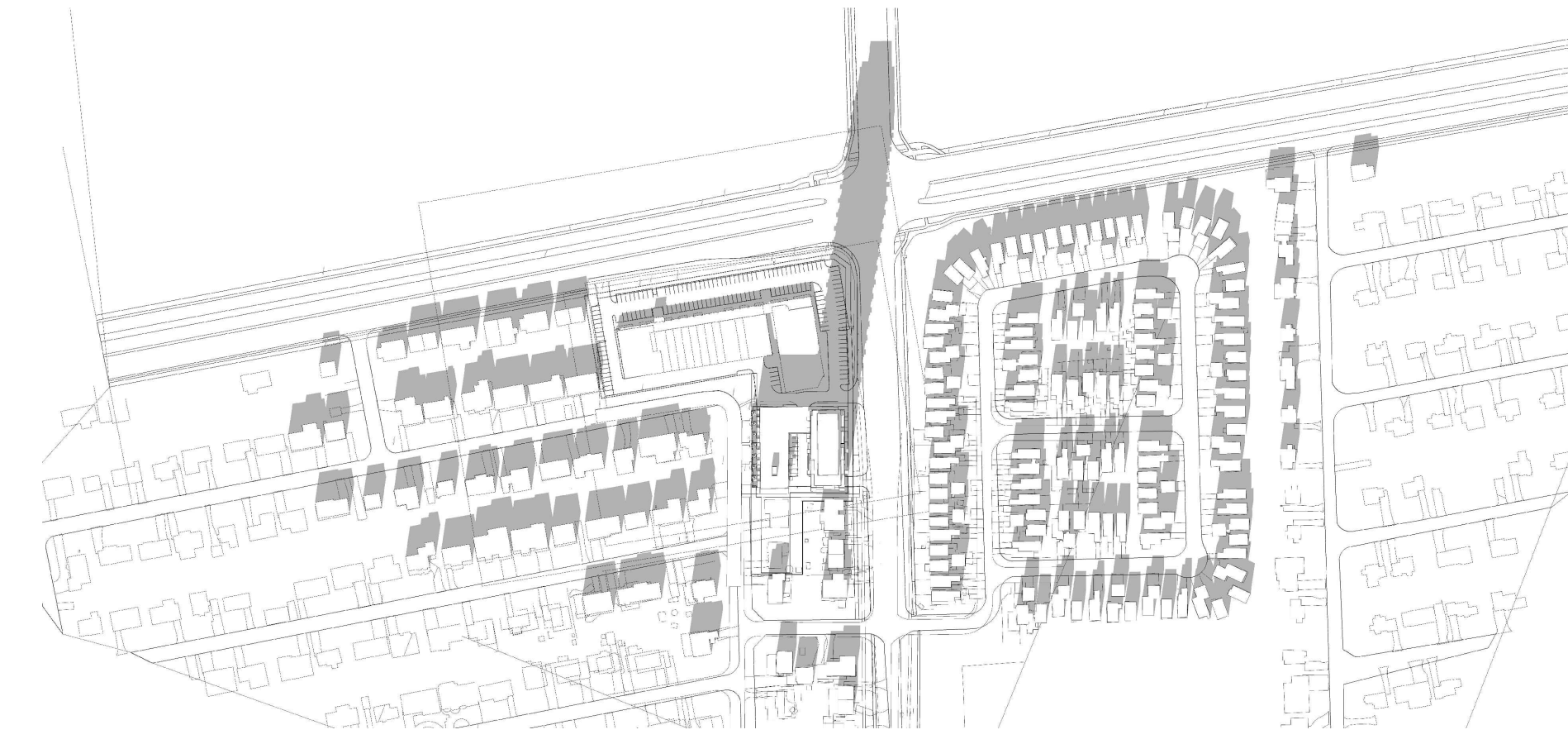
DECEMBER 21



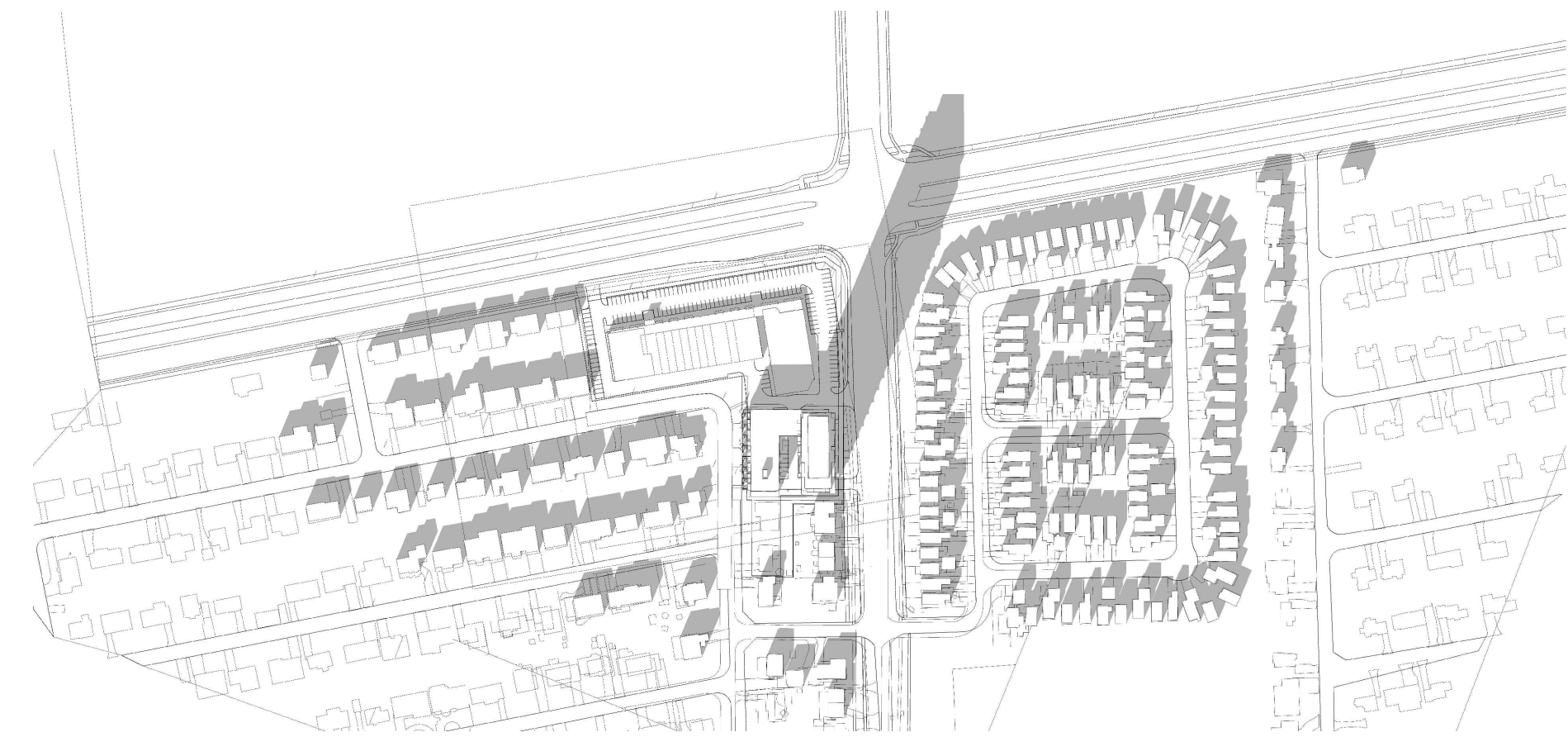
9:00 AM



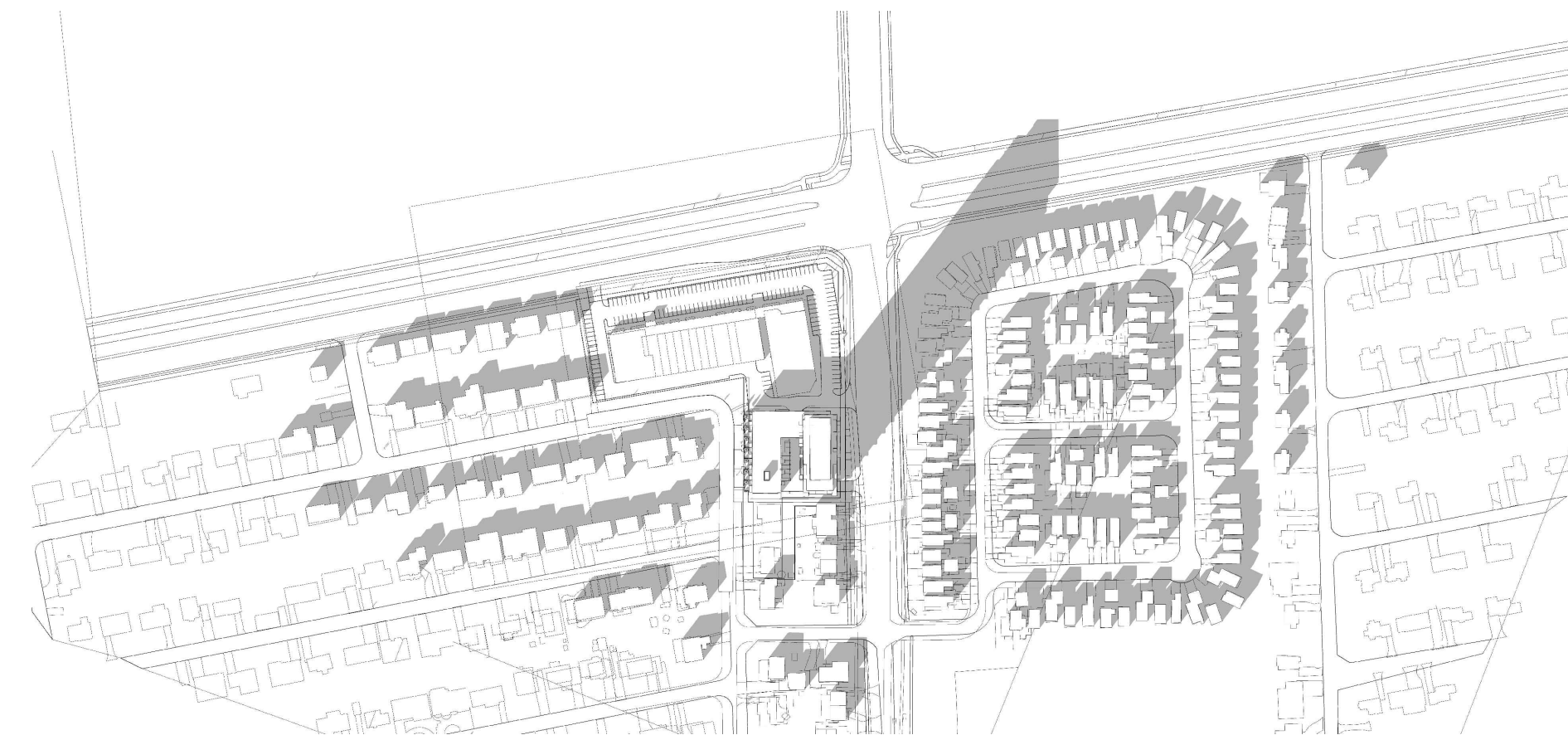
10:00 AM



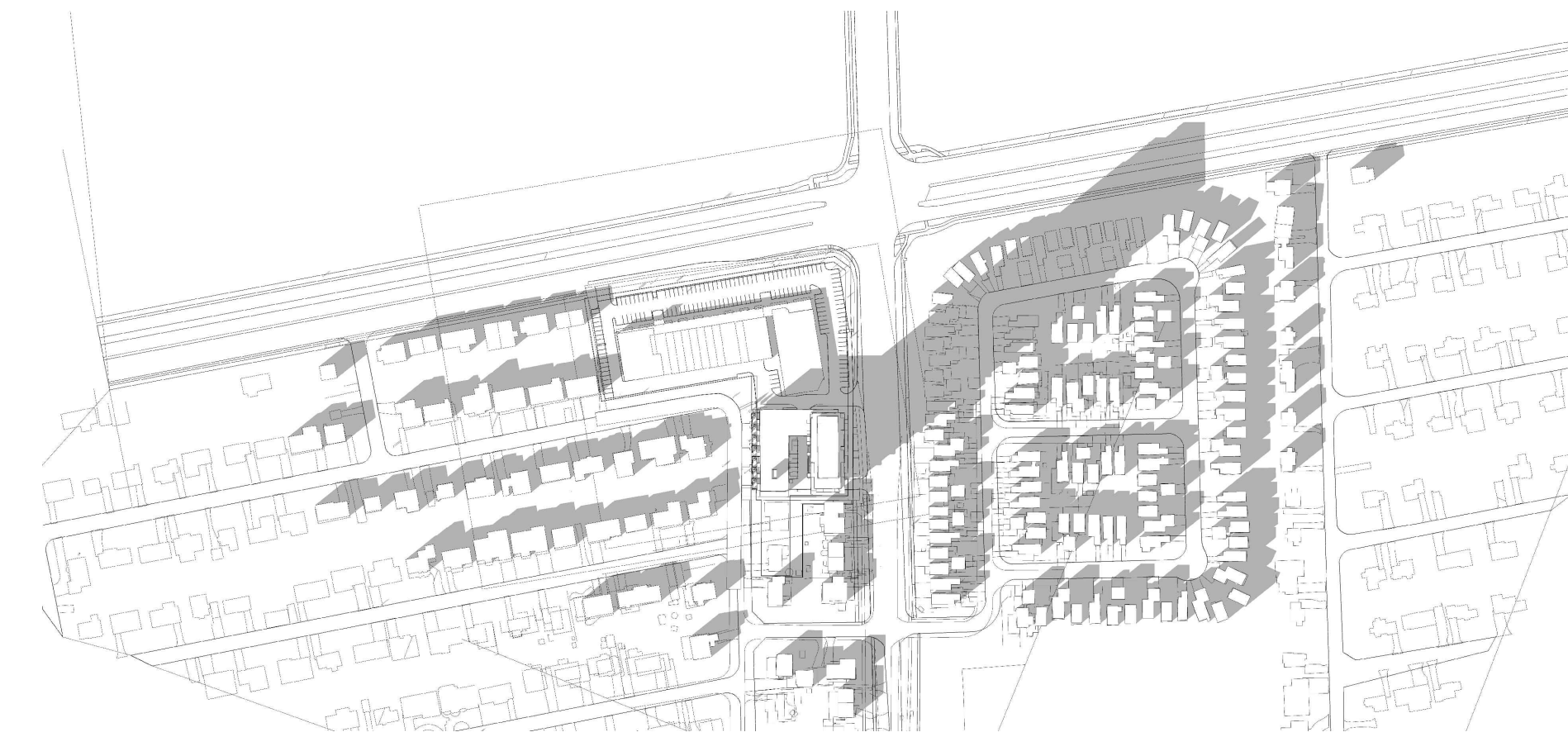
11:00 AM



12:00 PM



1:00 PM



2:00 PM



3:00 PM

IT IS THE RESPONSIBILITY OF THE APPROPRIATE CONTRACTOR TO CHECK AND VERIFY ALL DIMENSIONS ON SITE AND TO REPORT ALL ERRORS AND/OR OMISSIONS TO THE ARCHITECT.
ALL CONTRACTORS MUST COMPLY WITH ALL PERTINENT CODES AND BY-LAWS.
THIS DRAWING MAY NOT BE USED FOR CONSTRUCTION UNTIL SIGNED BY THE ARCHITECT.
DO NOT SCALE DRAWINGS.
COPYRIGHT RESERVED.

NOTATION SYMBOLS:

- INDICATES DRAWING NOTES, LISTED ON EACH SHEET.
- INDICATES ASSEMBLY TYPE; REFER TO TYPICAL ASSEMBLY SCHEDULE.
- INDICATES WINDOW TYPE; REFER TO WINDOW ELEVATIONS AND DETAILS ON A900 SERIES.
- INDICATES DOOR TYPE; REFER TO DOOR SCHEDULE AND DETAILS ON A900 SERIES.
- DETAIL NUMBER
- TITLE SCALE
- DETAIL REFERENCE PAGE
- DETAIL CROSS REFERENCE PAGE

	ISSUED FOR SPC APPLICATION	June 09, 23
	ISSUED FOR OWNER / CONSULTANT REVIEW	April 13, 23
No.	DESCRIPTION	DATE

REVISIONS:

	NORTH ARROW:
SEAL DATE: STAMP DATE	

CLIENT:

Theberge Developments Ltd.

ARCHITECT:

RODERICK LAHEY
ARCHITECT INC

56 Beech Street, Ottawa, Ontario K1S 3J6
1.613.724.9932 1.613.724.1209 www.rodericklahey.ca

PROJECT TITLE:

**780 Baseline Road
PHASE ONE**

OTTAWA ONTARIO

SHEET TITLE:

**SHADOW STUDY
SEP. 21 (DST)**

DRAWN: T.Z.	CHECKED: T.Z.
SCALE: NTS	SHEET No. A402
PROJECT No. 2131	

Plan No.: #