

GENERAL NOTES:

- ALL PLANT MATERIAL SHALL BE NURSERY GROWN STOCK UNLESS OTHERWISE NOTED.
- TREES TO HAVE A MINIMUM 1800 CLEAR STEM ABOVE GRADE.
- CONTRACTOR TO MAKE GOOD ALL EXISTING AREAS DAMAGED BY HIS WORK TO THE SATISFACTION OF THE CONTRACTOR.
- ALL PLANT MATERIAL SHALL BE WARRANTED FOR TWO YEARS FROM THE DATE OF SUBSTANTIAL COMPLETION.
- CONTRACTOR TO VERIFY LOCATION OF ALL SERVICES PRIOR TO ANY EXCAVATION.
- ANY PROPOSED SUBSTITUTIONS OF PLANT SPECIES SHALL BE MADE WITH PLANTS OF EQUIVALENT OVERALL FORM, HEIGHT, BRANCHING HABIT, FLOWER, LEAF, COLOR, FRUIT AND CULTURE AND ONLY AFTER APPROVAL OF THE LANDSCAPE ARCHITECT.

PROJECT CONSULTANTS:

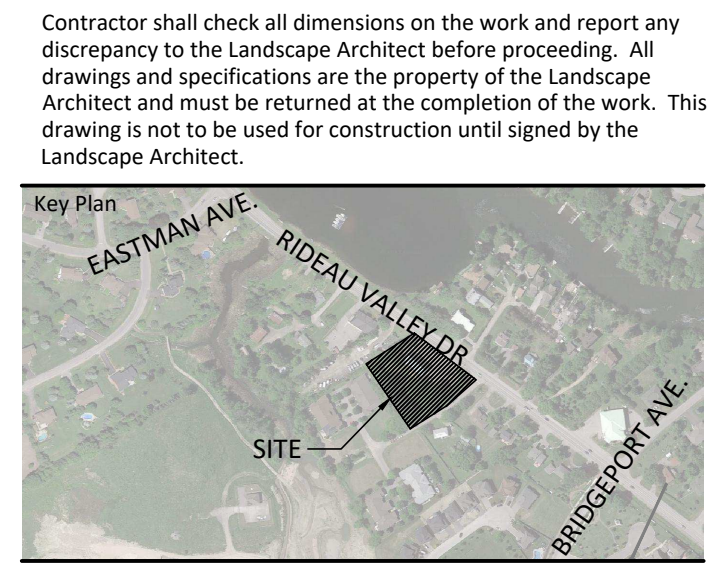
Architecture and Site Plan
 Rossmann Architecture
 88 Saint-Joseph Boulevard, Gatineau
 QC J8Y 3W5
<https://www.rossmannarchitecture.ca/>

Civil Engineer
 EGIS Group
 114 Walgreen Road
 R.R. 3 Carp, ON K0A 1L0
<https://www.egis-group.com/>

Structural Engineer
 Leekor Engineering Inc.
 359 Kent St #501, Ottawa, ON K2P 2M8
<https://www.leekor.com/>

Mechanical Engineer
 Miron Ltd
 2000 Thurston Dr #31, Ottawa, ON K1G 4K7
<https://www.miron.com/>

Electrical Engineer
 Miron Ltd
 2000 Thurston Dr #31, Ottawa, ON K1G 4K7
<https://www.miron.com/>



- LEGEND**
- PROPERTY LINE
 - FENCING
 - PRIVACY FENCE LOCATED 0.15M ON PRIVATE PROPERTY
 - SURFACING
 - C.I.P. CONCRETE
 - UNIT PAVING
 - SOD
 - PROJECTED FUTURE TREE CANOPY COVER (40 YRS)
 - SOIL VOLUME DELINEATION
 - DECIDUOUS SHRUB
 - CONIFEROUS SHRUB

PLANT LIST

KEY	BOTANICAL NAME	COMMON NAME	SIZE	REMARKS	QTY	NATIVE SPP. (Y/N)
DECIDUOUS TREES						
AR	ACER RUBRUM	RED MAPLE	50mm	B&B/W.B.	3	Y
CO	CELTIS OCCIDENTALIS	COMMON HACKBERRY	50mm	B&B/W.B.	2	Y
CS	CATALPA SPECIOSA	NORTHERN CATALPA	50mm	B&B/W.B.	2	Y
QM	QUERCUS MACROCARPA	BURR OAK	50mm	B&B/W.B.	2	Y
					9	
SMALL MULTI-STEM TREES						
CC	CARPINUS CAROLINIANA	BLUE BEECH	15 GAL.	POTTED	3	Y
SA	SORBUS AMERICANA	AMERICAN MOUNTAIN ASH	15 GAL.	POTTED	4	Y
					7	
CONIFEROUS SHRUBS						
Js	JUNIPERUS SABINA 'TAMARISCIFOLIA'	TAMARIX JUNIPER	3 GAL.	POTTED	10	N
					10	
DECIDUOUS SHRUBS						
Ss	SPIRAEA SORBIFOLIA 'SEM'	SEM FALSE SPIREA	3 GAL.	POTTED	12	N
Sm	SYRINGA MEYERI 'MISS KIM'	DWARF MISS KIM LILAC	3 GAL.	POTTED	11	N
					23	

TREE SOIL VOLUMES

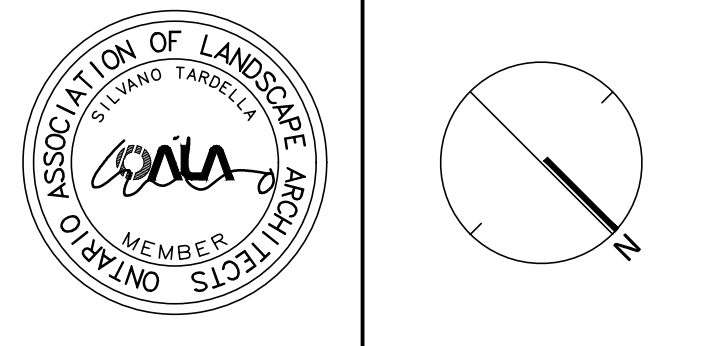
TREE TYPE/SIZE	SINGLE TREE SOIL VOLUME	MULTIPLE TREE SOIL VOLUME (m3/TREE)
ORNAMENTAL	15	9
COLUMNAR	15	9
SMALL	20	12
MEDIUM	25	15
LARGE	30	18
CONIFER	25	15

No.	Description	Date
8	Issued for Fourth Submission	2024/06/27
7	Re-issued for Third Submission	2024/04/19
6	Issued for Third Submission	2024/02/21
5	Issued for Revised Second Submission	2023/11/24
4	Issued for Second Submission	2023/11/14
3	Issued for Coordination	2023/10/27
2	Issued for First Submission	2023/06/09
1	Issued for Client Review	2023/05/19

Revision
 City Approval Stamp

PROPERTY INFORMATION
 LOT4, CONCESSION 'A' (BROKEN FRONT), GEOGRAPHIC TOWNSHIP OF NORTH GOWER PREPARED BY MCINTOSH PERRY SURVEYING INC.
 650a Eagleson Rd, Kanata, ON K2M 1H4

HAWKINS PROPERTIES
 650a Eagleson Rd, Kanata, ON K2M 1H4



NAK
 design strategies
 1285 WELLINGTON STREET, OTTAWA, ON K1Y 3A8 CANADA
 T 613.237.2345
NAKDESIGNSTRATEGIES.COM

5646, 5650 Manotick Main St.
 OTTAWA, ONTARIO

Title	LANDSCAPE PLAN
Date	2023-05-16
Scale	1:150
Drawn	AM
Checked	SC
Job No.	23-088
Sheet	L01

1:150



CITY FILE N° D07-12-23-0080