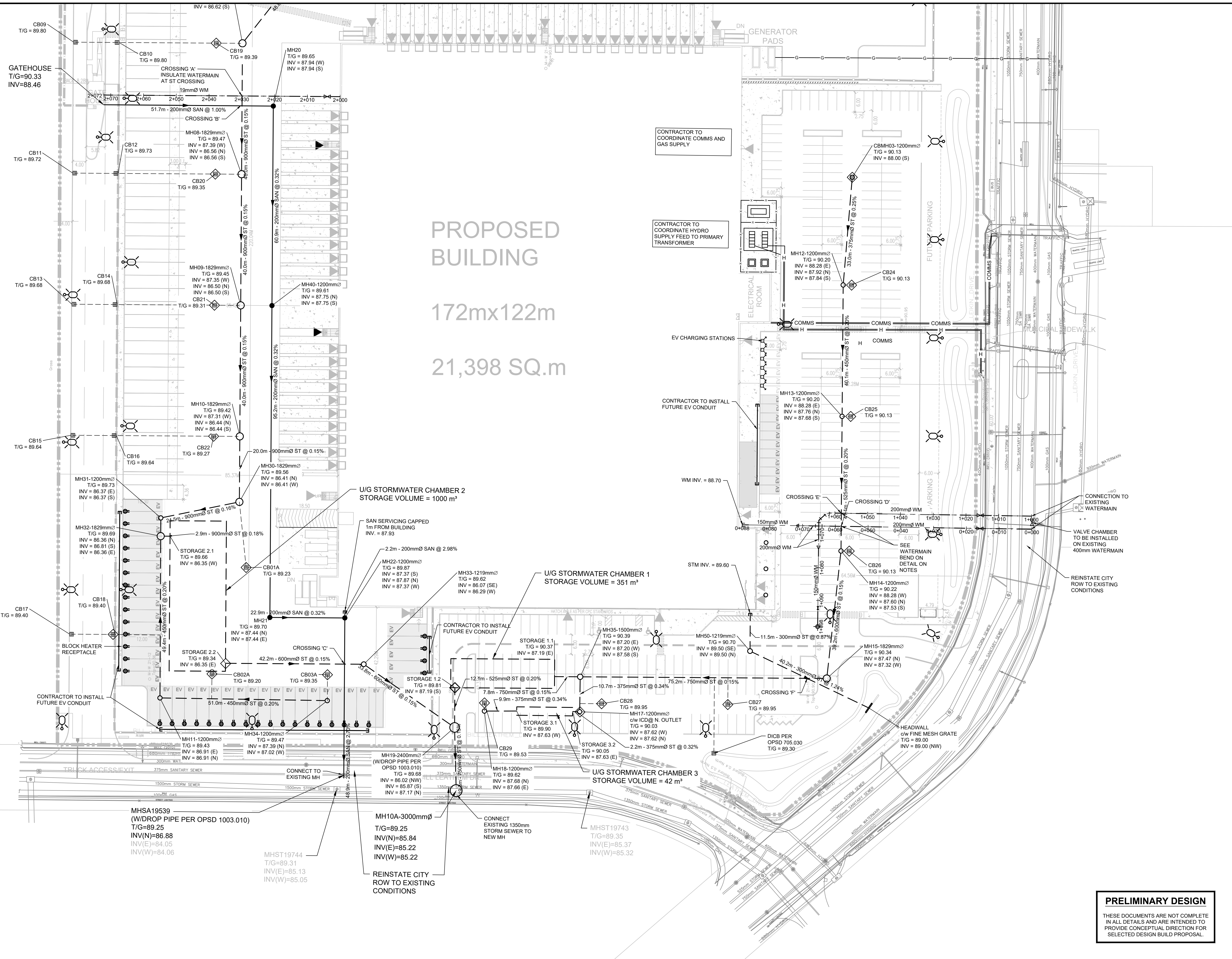
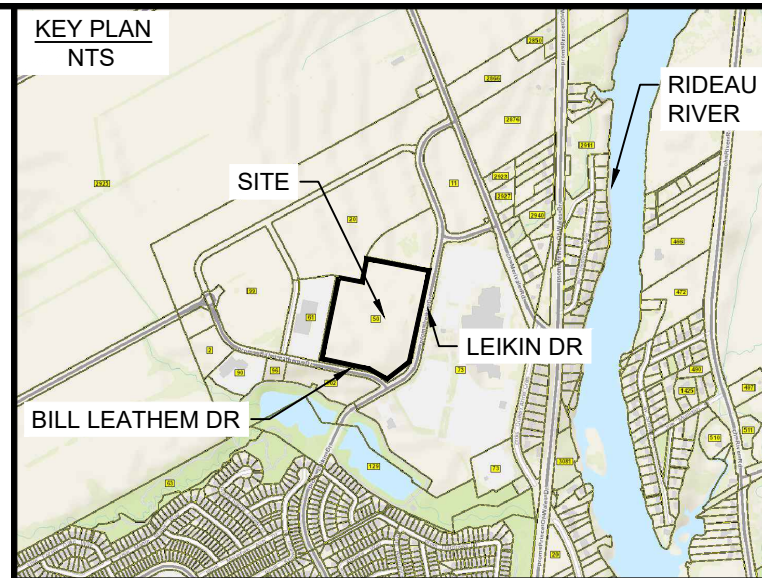


File Location: P:\13100031940-000 - CFC Ottawa and Vancouver Processing Centre\Production\Civil\13100031940-000 C SERVING.dwg



PROPOSED BUILDING
172mx122m
21,398 SQ.m



- LEGEND**
- PROPERTY LINE
 - VC EXISTING VALVE CHAMBER (WATERMAIN)
 - FH EXISTING FIRE HYDRANT
 - WV EXISTING WATER VALVE
 - CB EXISTING CATCH BASIN INLET
 - M-W EXISTING MONITORING WELL
 - MH EXISTING MAINTENANCE HOLE
 - 2.7m HIGH PROPOSED CHAIN LINK FENCE
 - 2.7m HIGH PROPOSED ORNAMENTAL FENCE
 - FL PROPOSED FIRE HYDRANT
 - FE FUTURE ELECTRIC VEHICLE CONDUIT
 - H PROPOSED HYDRO
 - GH PROPOSED GAS
 - BH BLOCK HEATER RECEPTACLE
 - EV ELECTRIC VEHICLE CHARGER

No.	ISSUE / REVISION	DDMMYY
1	ISSUED FOR SITE PLAN CONTROL	28/06/23
0	ISSUED FOR SITE PLAN CONTROL	16/06/23

THESE DRAWINGS HAVE BEEN PRODUCED BY J.L. RICHARDS & ASSOCIATES LIMITED AND ARE SUBJECT TO COPYRIGHT AND USE RESTRICTIONS SET OUT IN THE APPLICABLE PROJECT CONTRACT. ANY USE, REUSE, OR MODIFICATION OF THESE DRAWINGS FOR PURPOSES OTHER THAN THE ORIGINAL PROJECT OR EXECUTION OF THE DESCRIBED WORK IS NOT PERMITTED OR ENDORSED WITHOUT THE PRIOR WRITTEN AUTHORIZATION OF J.L.R. J.L.R. MAKES NO WARRANTIES, EITHER EXPRESS OR IMPLIED, OF THE SUITABILITY OR FITNESS OF THESE DRAWINGS FOR ANY OTHER PURPOSE, AND ANY PARTY WHICH CHOOSES TO USE, MODIFY, OR OTHERWISE RELY ON THESE DRAWINGS WITHOUT J.L.R.'S AUTHORIZATION ACCEPTS THESE LIMITATIONS AND DOES SO AT THEIR SOLE RISK AND WITHOUT LIABILITY TO J.L.R.

VERIFY SHEET SIZE AND SCALES. THE BAR TO THE RIGHT IS 25mm IF THIS IS A FULL SIZE DRAWING.

SCALE: 1:500



CONSULTANT: **J.L. Richards**
ENGINEERS-ARCHITECTS-PLANNERS



PROFESSIONAL STAMP: **A. WILLIAMS**
100218963
2023-06-26
PROVINCE OF ONTARIO

PROJECT NORTH

PROJECT: **CANADA POST CORPORATION OTTAWA PROCESSING CENTRE**
50 LEIKIN DRIVE
OTTAWA, ONTARIO

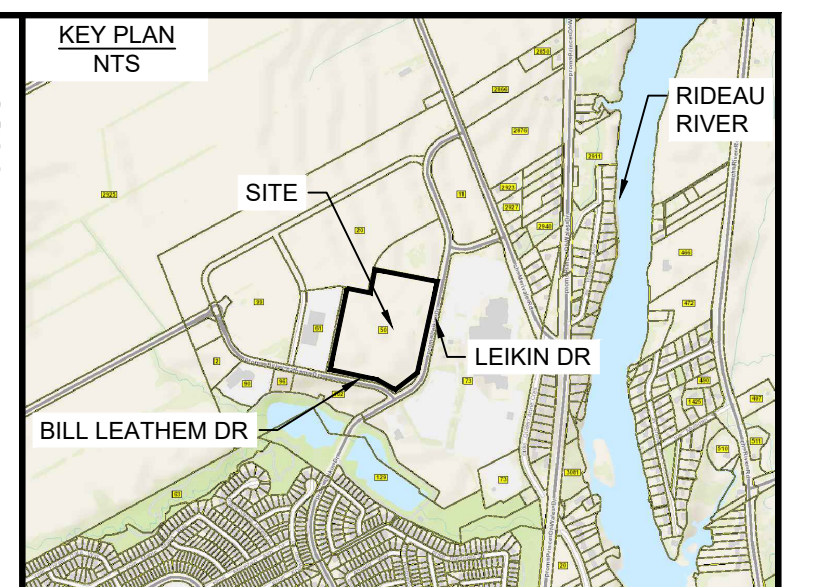
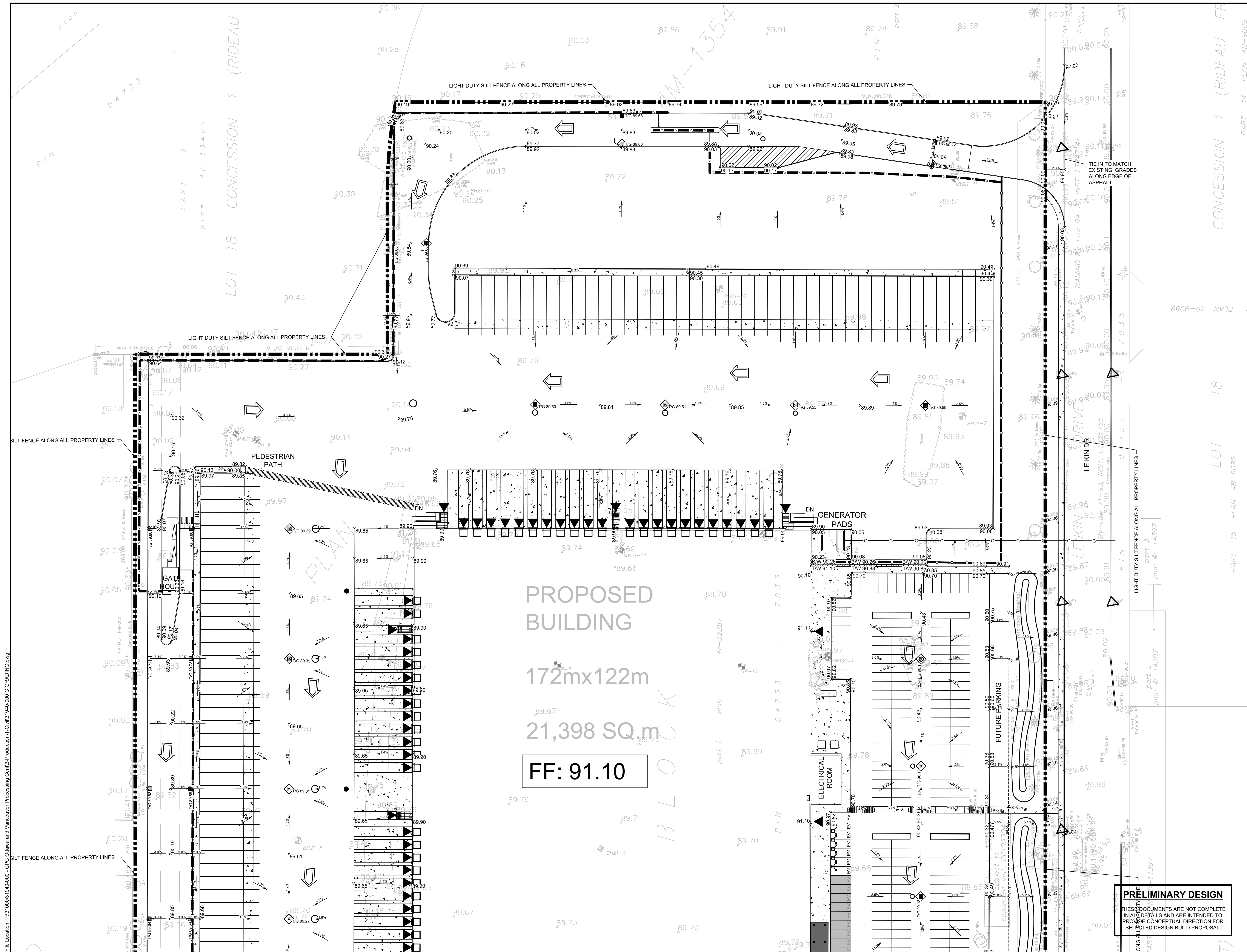
DRAWING: **SITE SERVICING**

PRELIMINARY DESIGN

THESE DOCUMENTS ARE NOT COMPLETE IN ALL DETAILS AND ARE INTENDED TO PROVIDE CONCEPTUAL DIRECTION FOR SELECTED DESIGN BUILD PROPOSAL.

DESIGN: AW	DRAWING #:
DRAWN: NQ/KT	C02.1
CHECKED: LJ	
JLR #: 31940-000	

PLOT DATE: June 26, 2023 3:58:31 PM



LEGEND

- PROPERTY LINE
- 89.92 EXISTING ELEVATION (m)
- 89.92* EXISTING TOP OF CURB/WALL ELEVATION (m)
- 89.53* PROPOSED ELEVATION
- 1.5% SURFACE SLOPE
- FLOW DIRECTION
- △ FILTER CLOTH FOR EXISTING STRUCTURE
- IB IRON BAR
- VC EXISTING VALVE CHAMBER (WATERMAIN)
- FH EXISTING FIRE HYDRANT
- WV EXISTING WATER VALVE
- CB EXISTING CATCH BASIN INLET
- M-W EXISTING MONITORING WELL
- MH EXISTING MAINTENANCE HOLE
- 2.7m HIGH PROPOSED CHAIN LINK FENCE
- 2.7m HIGH PROPOSED ORNAMENTAL FENCE
- OVERLAND FLOW
- ▬ RETAINING WALL

No.	ISSUE / REVISION	DDMMYY
1	ISSUED FOR SITE PLAN CONTROL	26/06/23
0	ISSUED FOR SITE PLAN CONTROL	16/06/23

THESE DRAWINGS HAVE BEEN PRODUCED BY J.L. RICHARDS & ASSOCIATES LIMITED AND ARE SUBJECT TO COPYRIGHT AND USE RESTRICTIONS SET OUT IN THE APPLICABLE PROJECT CONTRACT. ANY USE, REUSE OR MODIFICATION OF THESE DRAWINGS FOR PURPOSES OTHER THAN THE ORIGINAL PROJECT OR EXECUTION OF THE DESCRIBED WORK IS NOT PERMITTED OR ENDORSED WITHOUT THE PRIOR WRITTEN AUTHORIZATION OF J.L.R. J.L.R. MAKES NO WARRANTIES, EITHER EXPRESS OR IMPLIED, OF THE SUITABILITY OR FITNESS OF THESE DRAWINGS FOR ANY OTHER PURPOSE, AND ANY PARTY WHICH CHOOSES TO USE, MODIFY, OR OTHERWISE RELY ON THESE DRAWINGS WITHOUT A.P.S. AUTHORIZATION ACCEPTS THESE LIMITATIONS AND DOES SO AT THEIR SOLE RISK AND WITHOUT LIABILITY TO J.L.R.

VERIFY SHEET SIZE AND SCALES. THE BAR TO THE RIGHT IS 25mm IF THIS IS A FULL SIZE DRAWING.

SCALE: 1:500

CLIENT:

CONSULTANT:

CONSULTANT:

PROFESSIONAL STAMP

PROJECT NORTH

PROJECT:

**CANADA POST CORPORATION
OTTAWA PROCESSING CENTRE**

50 LIEKIN DRIVE
OTTAWA, ONTARIO

DRAWING:

GRADING AND EROSION & SEDIMENT CONTROL PLAN

DESIGN: AW

DRAWN: NO/JKT

CHECKED: LJ

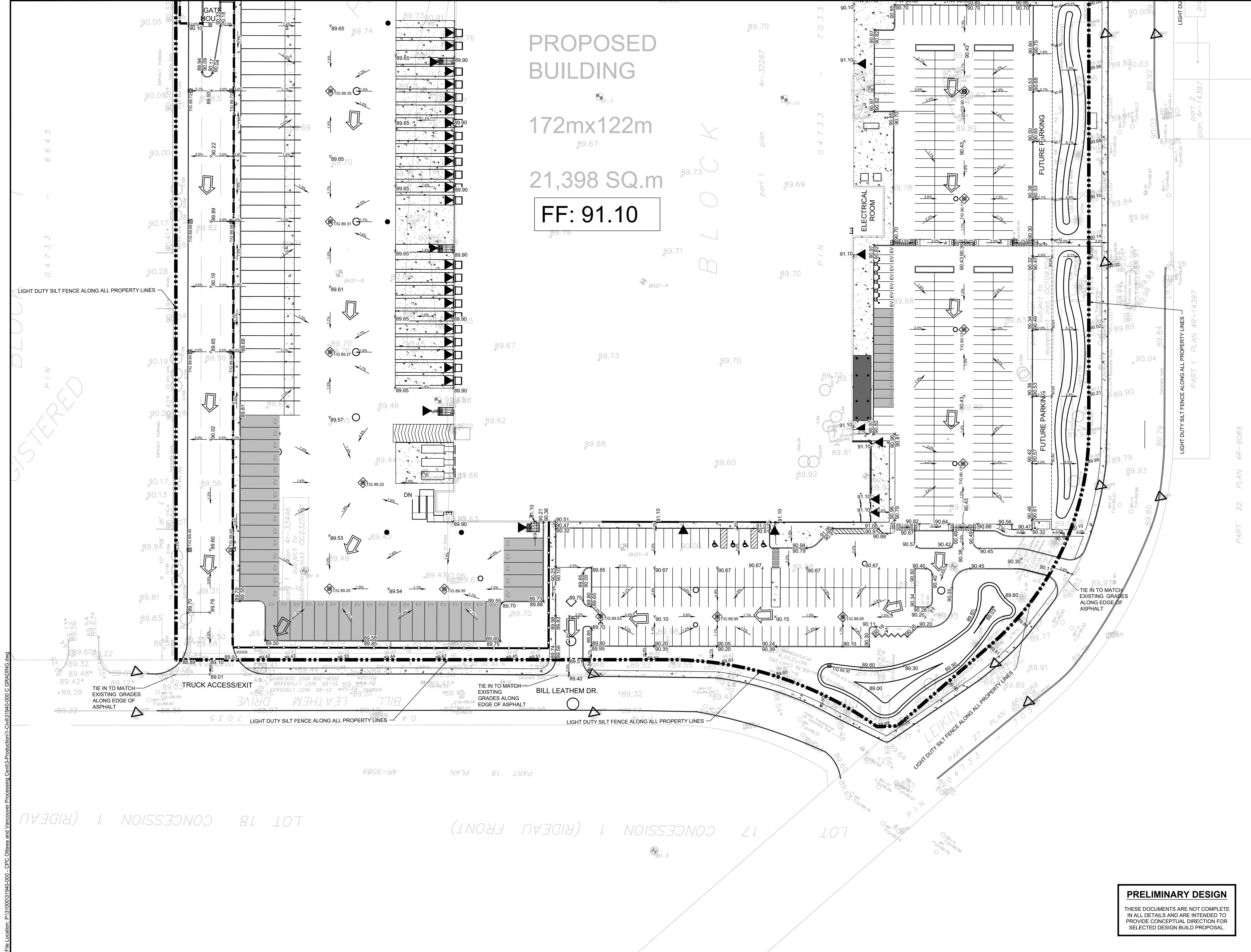
JLR #: 31940-000

DRAWING #:

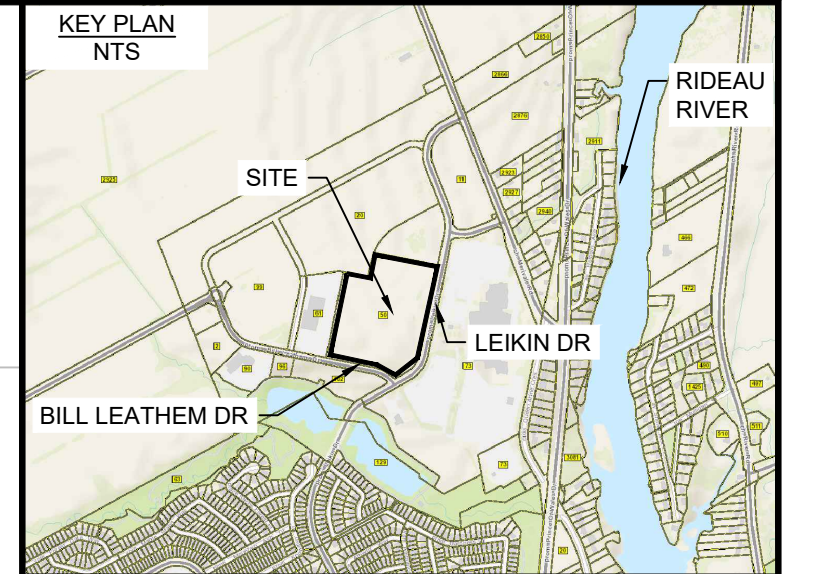
C03

PRELIMINARY DESIGN

THESE DOCUMENTS ARE NOT COMPLETE IN ALL DETAILS AND ARE INTENDED TO PROVIDE CONCEPTUAL DIRECTION FOR SELECTED DESIGN BUILD PROPOSAL.



PROPOSED
BUILDING
172mx122m
21,398 SQ.m
FF: 91.10



LEGEND

- PROPERTY LINE
- EXISTING ELEVATION (m)
- EXISTING TOP OF CURB/WALL ELEVATION (m)
- PROPOSED ELEVATION
- SURFACE SLOPE
- FLOW DIRECTION
- △ FILTER CLOTH FOR EXISTING STRUCTURE
- IB IRON BAR
- VC EXISTING VALVE CHAMBER (WATERMAIN)
- FW EXISTING FIRE HYDRANT
- WV EXISTING WATER VALVE
- CB EXISTING CATCH BASIN INLET
- MW EXISTING MONITORING WELL
- MH EXISTING MAINTENANCE HOLE
- 2.7m HIGH PROPOSED CHAIN LINK FENCE
- 2.7m HIGH PROPOSED ORNAMENTAL FENCE
- OVERLAND FLOW
- RETAINING WALL

No.	ISSUE / REVISION	DDMMYY
1	ISSUED FOR SITE PLAN CONTROL	26/06/23
0	ISSUED FOR SITE PLAN CONTROL	16/06/23

THESE DRAWINGS HAVE BEEN PRODUCED BY J.L. RICHARDS & ASSOCIATES LIMITED AND ARE SUBJECT TO COPYRIGHT AND USE RESTRICTIONS SET OUT IN THE APPLICABLE PROJECT CONTRACT. ANY USE, REUSE, OR MODIFICATION OF THESE DRAWINGS FOR PURPOSES OTHER THAN THE ORIGINAL PROJECT OR EXECUTION OF THE DESCRIBED WORK IS NOT PERMITTED OR ENDORSED WITHOUT THE PRIOR WRITTEN AUTHORIZATION OF J.L.R. J.L.R. MAKES NO WARRANTIES, EITHER EXPRESS OR IMPLIED, OF THE SUITABILITY OR FITNESS OF THESE DRAWINGS FOR ANY OTHER PURPOSE, AND ANY PARTY WHICH CHOOSES TO USE, MODIFY, OR OTHERWISE RELY ON THESE DRAWINGS WITHOUT J.L.R.'S AUTHORIZATION ACCEPTS THESE LIMITATIONS AND DOES SO AT THEIR SOLE RISK AND WITHOUT LIABILITY TO J.L.R.

VERIFY SHEET SIZE AND SCALES. THE BAR TO THE RIGHT IS 25mm IF THIS IS A FULL SIZE DRAWING.

SCALE: 1:500



PROFESSIONAL STAMP

PROJECT NORTH

PROJECT:

**CANADA POST CORPORATION
OTTAWA PROCESSING CENTRE**

50 LEIKIN DRIVE
OTTAWA, ONTARIO

DRAWING:

**GRADING, EROSION AND
SEDIMENT CONTROL PLAN**

DESIGN: AW

DRAWN: NQ/KT

CHECKED: LJ

JLR #: 31940-000

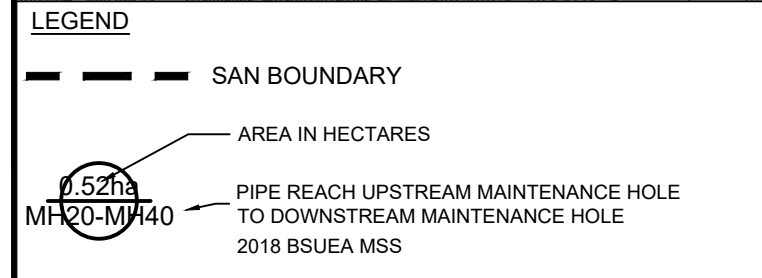
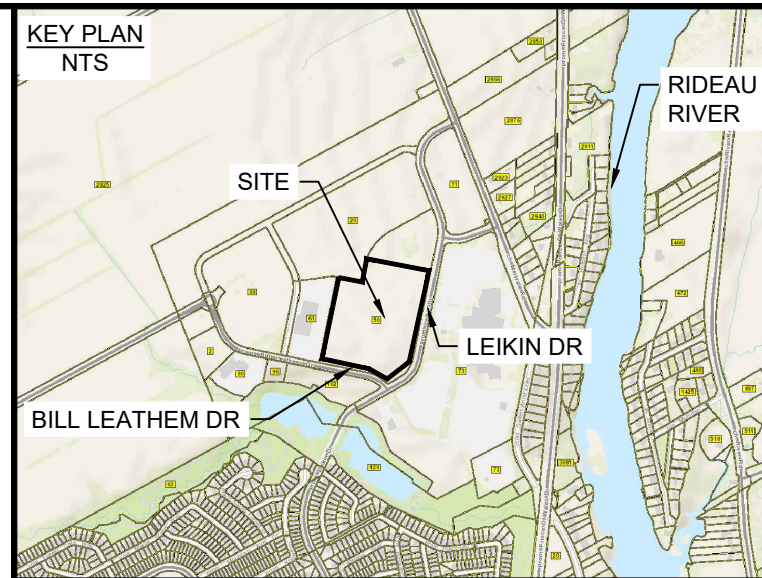
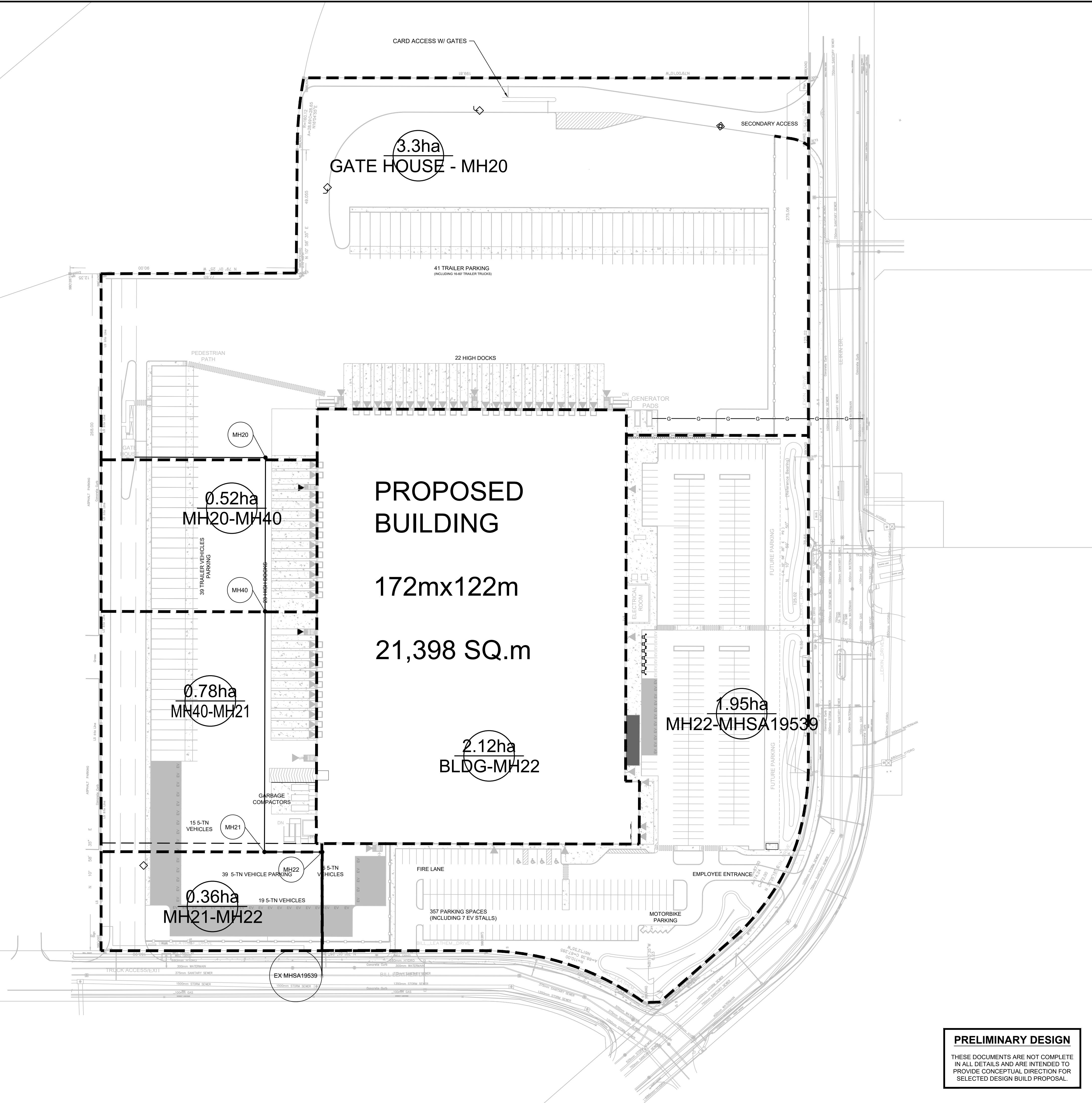
DRAWING #:

C03.1

PRELIMINARY DESIGN

THESE DOCUMENTS ARE NOT COMPLETE IN ALL DETAILS AND ARE INTENDED TO PROVIDE CONCEPTUAL DIRECTION FOR SELECTED DESIGN BUILD PROPOSAL.

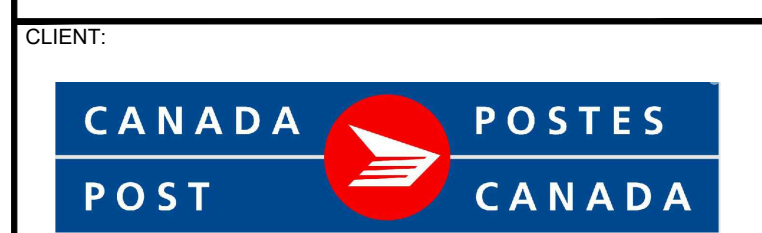
File Location: P:\131000\31940-000 - CFC Ottawa and Vancouver Processing Centres-Production\1-Civil\31940-000 C DSAN.dwg



No.	ISSUE / REVISION	DDMMYY
1	ISSUED FOR SITE PLAN CONTROL	28/06/23
0	ISSUED FOR SITE PLAN CONTROL	16/06/23

THESE DRAWINGS HAVE BEEN PRODUCED BY J.L. RICHARDS & ASSOCIATES LIMITED AND ARE SUBJECT TO COPYRIGHT AND USE RESTRICTIONS SET OUT IN THE APPLICABLE PROJECT CONTRACT. ANY USE, REUSE, OR MODIFICATION OF THESE DRAWINGS FOR PURPOSES OTHER THAN THE ORIGINAL PROJECT OR EXECUTION OF THE DESCRIBED WORK IS NOT PERMITTED OR ENDORSED WITHOUT THE PRIOR WRITTEN AUTHORIZATION OF J.L.R. J.L.R. MAKES NO WARRANTIES, EITHER EXPRESS OR IMPLIED, OF THE SUITABILITY OR FITNESS OF THESE DRAWINGS FOR ANY OTHER PURPOSE, AND ANY PARTY WHICH CHOOSES TO USE, MODIFY, OR OTHERWISE RELY ON THESE DRAWINGS WITHOUT J.L.R.'S AUTHORIZATION ACCEPTS THESE LIMITATIONS AND DOES SO AT THEIR SOLE RISK AND WITHOUT LIABILITY TO J.L.R.

VERIFY SHEET SIZE AND SCALES. THE BAR TO THE RIGHT IS 25mm IF THIS IS A FULL SIZE DRAWING. SCALE: 1:750



CONSULTANT: **J.L. Richards**
ENGINEERS - ARCHITECTS - PLANNERS



--	--

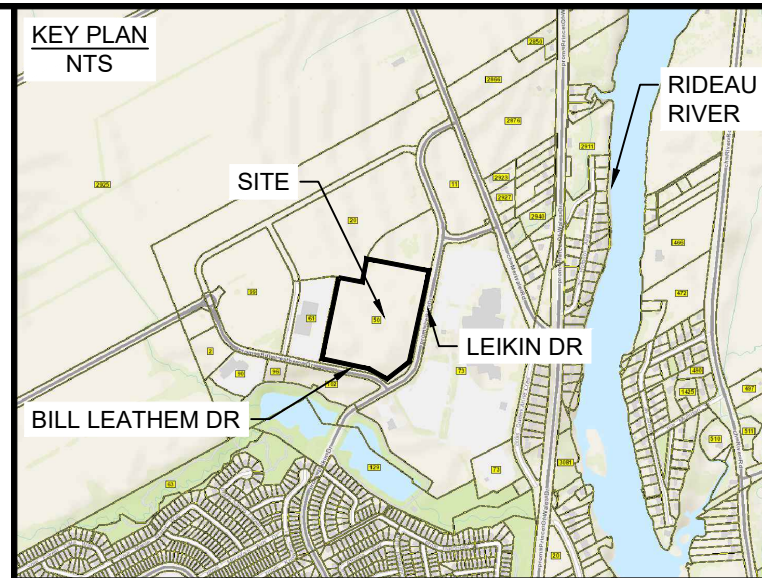
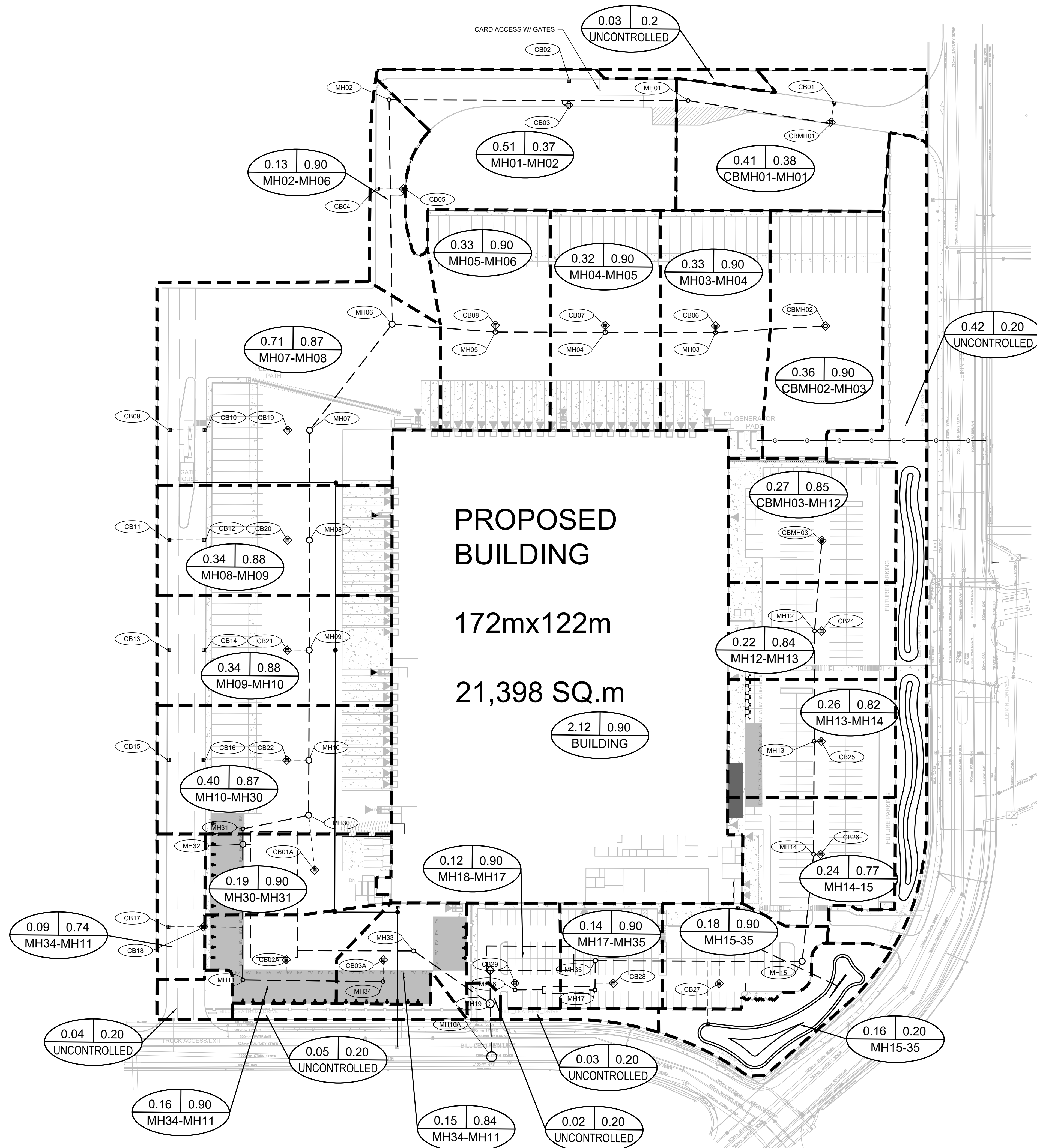
PROJECT:
CANADA POST CORPORATION
OTTAWA PROCESSING CENTRE
50 LEIKIN DRIVE
OTTAWA, ONTARIO

DRAWING:
SANITARY DRAINAGE PLAN

PRELIMINARY DESIGN
THESE DOCUMENTS ARE NOT COMPLETE IN ALL DETAILS AND ARE INTENDED TO PROVIDE CONCEPTUAL DIRECTION FOR SELECTED DESIGN BUILD PROPOSAL.

DESIGN: AW	DRAWING #:
DRAWN: NQ	C04
CHECKED: LJ	
JLR #: 31940-000	

PLOT DATE: June 26, 2023 3:52:54 PM



LEGEND

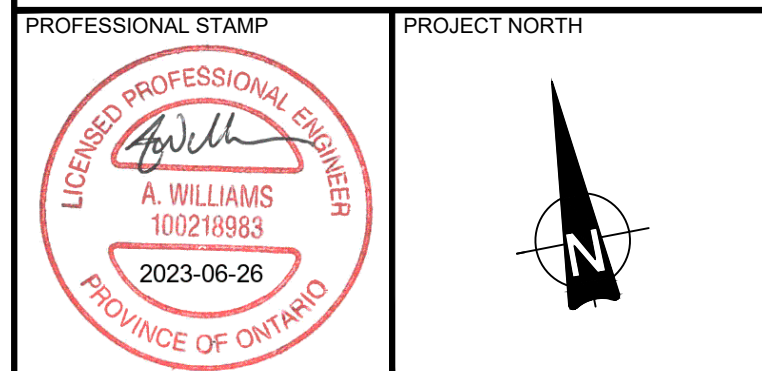
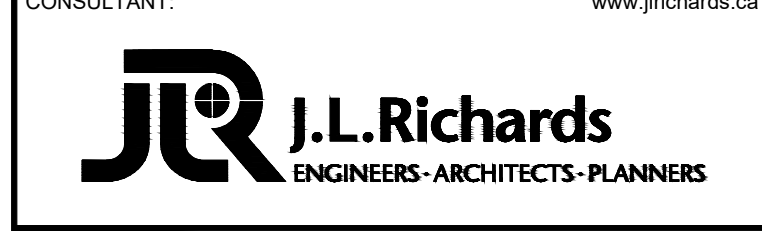
- STM BOUNDARY
- PROPOSED STORM SEWER & MANHOLE
- AREA IN HECTARES
- RUNOFF COEFFICIENT (1-5 YEAR)
- PIPE REACH UPSTREAM MAINTENANCE HOLE TO DOWNSTREAM MAINTENANCE HOLE

No.	ISSUE / REVISION	DDMMYY
1	ISSUED FOR SITE PLAN CONTROL	26/06/23
0	ISSUED FOR SITE PLAN CONTROL	16/06/23

THESE DRAWINGS HAVE BEEN PRODUCED BY J.L. RICHARDS & ASSOCIATES LIMITED AND ARE SUBJECT TO COPYRIGHT AND USE RESTRICTIONS SET OUT IN THE APPLICABLE PROJECT CONTRACT. ANY USE, REUSE, OR MODIFICATION OF THESE DRAWINGS FOR PURPOSES OTHER THAN THE ORIGINAL PROJECT OR EXECUTION OF THE DESCRIBED WORK IS NOT PERMITTED OR ENDORSED WITHOUT THE PRIOR WRITTEN AUTHORIZATION OF J.L.R. J.L.R. MAKES NO WARRANTIES, EITHER EXPRESS OR IMPLIED, OF THE SUITABILITY OR FITNESS OF THESE DRAWINGS FOR ANY OTHER PURPOSE, AND ANY PARTY WHICH CHOOSES TO USE, MODIFY, OR OTHERWISE RELY ON THESE DRAWINGS WITHOUT J.L.R.'S AUTHORIZATION ACCEPTS THESE LIMITATIONS AND DOES SO AT THEIR SOLE RISK AND WITHOUT LIABILITY TO J.L.R.

VERIFY SHEET SIZE AND SCALES. THE BAR TO THE RIGHT IS 25mm IF THIS IS A FULL SIZE DRAWING.

SCALE: 1:750



PROJECT: CANADA POST CORPORATION
OTTAWA PROCESSING CENTRE
50 LEIKIN DRIVE
OTTAWA, ONTARIO

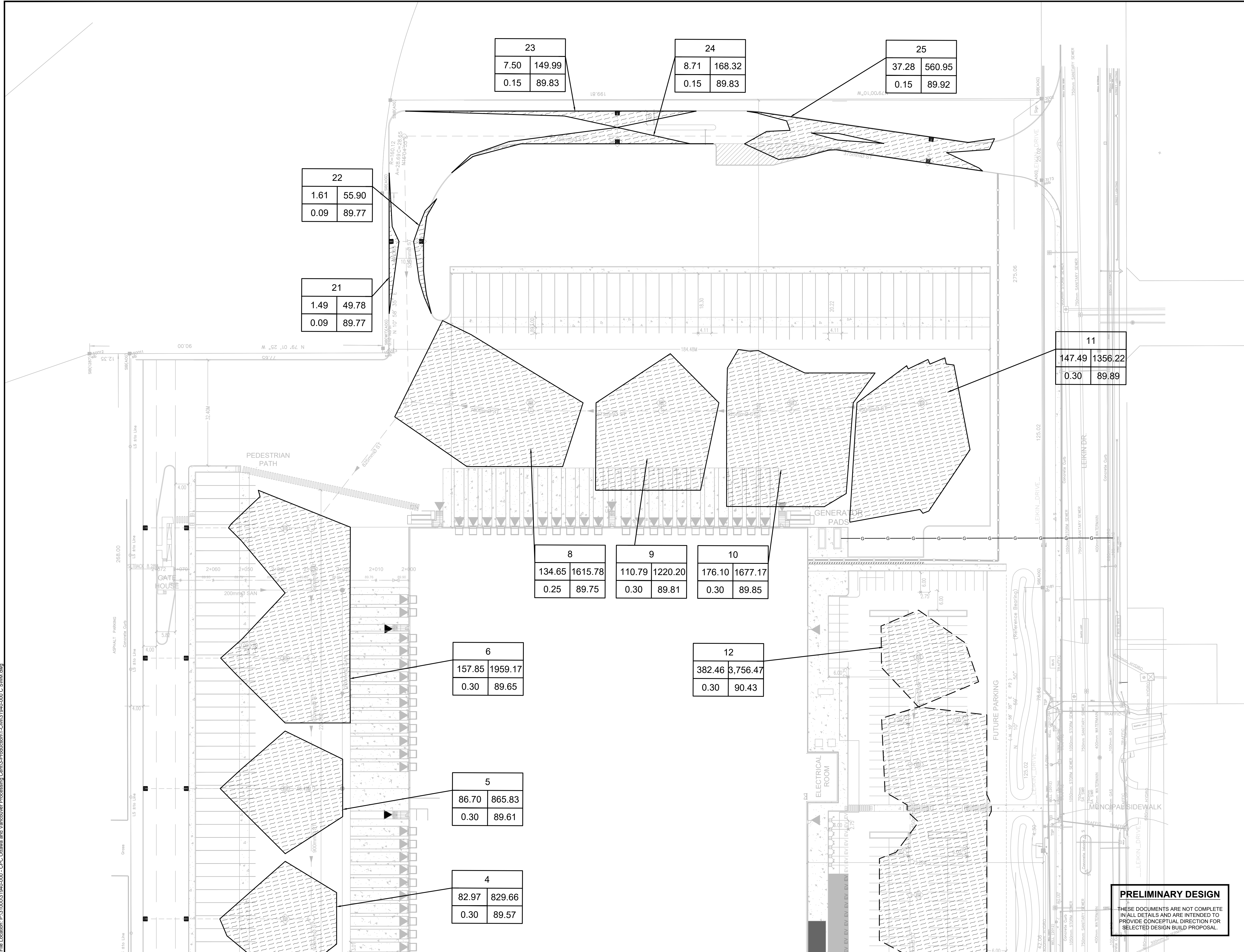
DRAWING: STORM DRAINAGE PLAN

PRELIMINARY DESIGN
THESE DOCUMENTS ARE NOT COMPLETE IN ALL DETAILS AND ARE INTENDED TO PROVIDE CONCEPTUAL DIRECTION FOR SELECTED DESIGN BUILD PROPOSAL.

DESIGN: AW	DRAWING #:
DRAWN: NQ	C05
CHECKED: LJ	
JLR #: 31940-000	

File Location: P:\131000\31940-000 - CFC Ottawa and Vancouver Processing Centre\Production\1-Civil\31940-000 C.DST.dwg

PLOT DATE: June 26, 2023 3:53:13 PM



23	
7.50	149.99
0.15	89.83

24	
8.71	168.32
0.15	89.83

25	
37.28	560.95
0.15	89.92

22	
1.61	55.90
0.09	89.77

21	
1.49	49.78
0.09	89.77

11	
147.49	1356.22
0.30	89.89

8	
134.65	1615.78
0.25	89.75

9	
110.79	1220.20
0.30	89.81

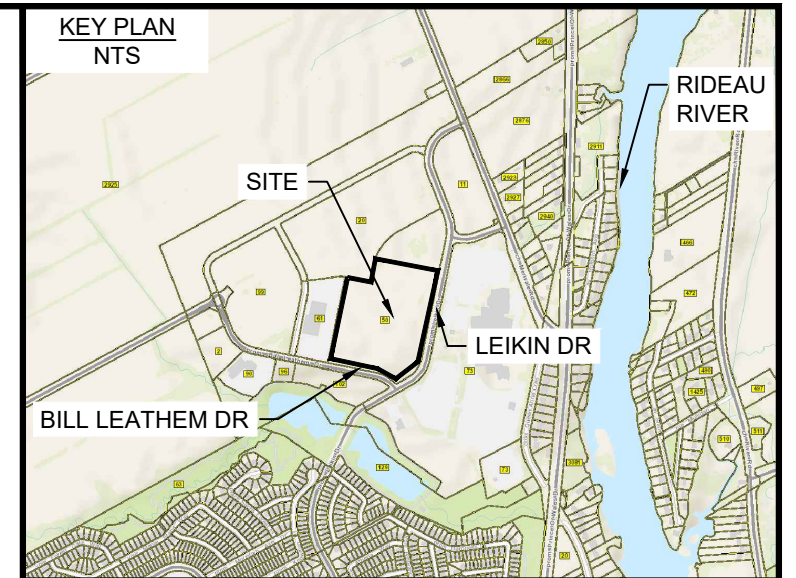
10	
176.10	1677.17
0.30	89.85

6	
157.85	1959.17
0.30	89.65

12	
382.46	3,756.47
0.30	90.43

5	
86.70	865.83
0.30	89.61

4	
82.97	829.66
0.30	89.57



LEGEND

- MAXIMUM WATER LEVEL (STATIC)
- MAX. PONDING VOLUME (m³)
- AREA ID
- MAX. PONDING AREA (m²)
- MAX. WATER LEVEL (STATIC)
- PONDING DEPTH (STATIC)

No.	ISSUE / REVISION	DDMMYY
1	ISSUED FOR SITE PLAN CONTROL	26/06/23
0	ISSUED FOR SITE PLAN CONTROL	16/06/23

THESE DRAWINGS HAVE BEEN PRODUCED BY J.L. RICHARDS & ASSOCIATES LIMITED AND ARE SUBJECT TO COPYRIGHT AND USE RESTRICTIONS SET OUT IN THE APPLICABLE PROJECT CONTRACT. ANY USE, REUSE, OR MODIFICATION OF THESE DRAWINGS FOR PURPOSES OTHER THAN THE ORIGINAL PROJECT OR EXECUTION OF THE DESCRIBED WORK IS NOT PERMITTED OR ENDORSED WITHOUT THE PRIOR WRITTEN AUTHORIZATION OF J.L.R. J.L.R. MAKES NO WARRANTIES, EITHER EXPRESS OR IMPLIED, OF THE SUITABILITY OR FITNESS OF THESE DRAWINGS FOR ANY OTHER PURPOSE, AND ANY PARTY WHICH CHOOSES TO USE, MODIFY, OR OTHERWISE RELY ON THESE DRAWINGS WITHOUT J.L.R.'S AUTHORIZATION ACCEPTS THESE LIMITATIONS AND DOES SO AT THEIR SOLE RISK AND WITHOUT LIABILITY TO J.L.R.

VERIFY SHEET SIZE AND SCALES. THE BAR TO THE RIGHT IS 25mm IF THIS IS A FULL SIZE DRAWING.

SCALE: 1:500



CONSULTANT: **J.L. Richards**
ENGINEERS-ARCHITECTS-PLANNERS



PROFESSIONAL STAMP: **A. WILLIAMS**, LICENSED PROFESSIONAL ENGINEER, 100218963, 2023-06-26, PROVINCE OF ONTARIO.

PROJECT NORTH:

PROJECT: **CANADA POST CORPORATION**
OTTAWA PROCESSING CENTRE
50 LEIKIN DRIVE OTTAWA, ONTARIO

DRAWING: **STORM DRAINAGE AND PONDING PLAN**

DESIGN: AW	DRAWING #:
DRAWN: NQ/KT	C06
CHECKED: LJ	
JLR #: 31940-000	

PRELIMINARY DESIGN
THESE DOCUMENTS ARE NOT COMPLETE IN ALL DETAILS AND ARE INTENDED TO PROVIDE CONCEPTUAL DIRECTION FOR SELECTED DESIGN BUILD PROPOSAL.

134.65	1615.78	110.79	1220.20	176.10	1677.17
0.25	89.75	0.30	89.81	0.30	89.85

6	157.85	1959.17
0.30	89.65	

12	382.46	3,756.47
0.30	90.43	

5	86.70	865.83
0.30	89.61	

4	82.97	829.66
0.30	89.57	

3	45.84	592.20
0.30	89.53	

1	72.81	736.87
0.30	89.50	

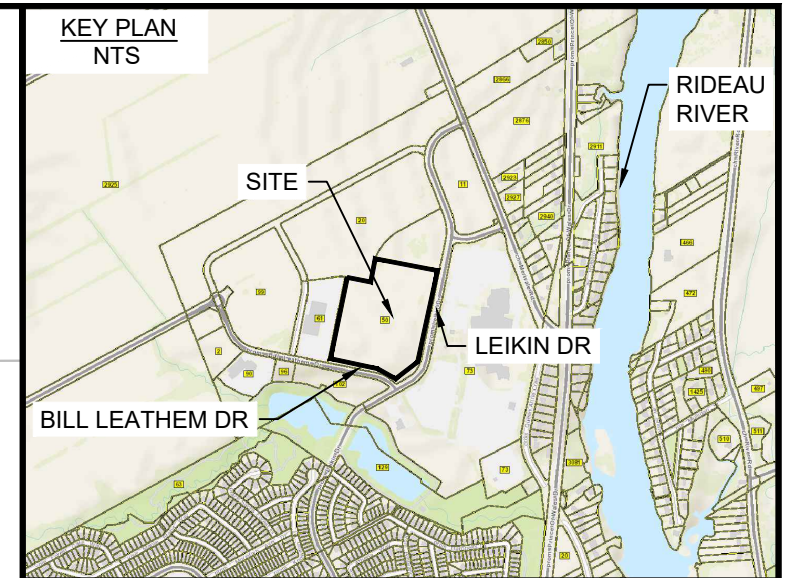
20	98.00	500.81
0.30	89.70	

2	33.73	532.53
0.30	89.54	

15	8.78	120.05
0.30	89.74	

14	13.01	244.22
0.15	90.10	

13	21.95	313.49
0.20	90.15	



LEGEND

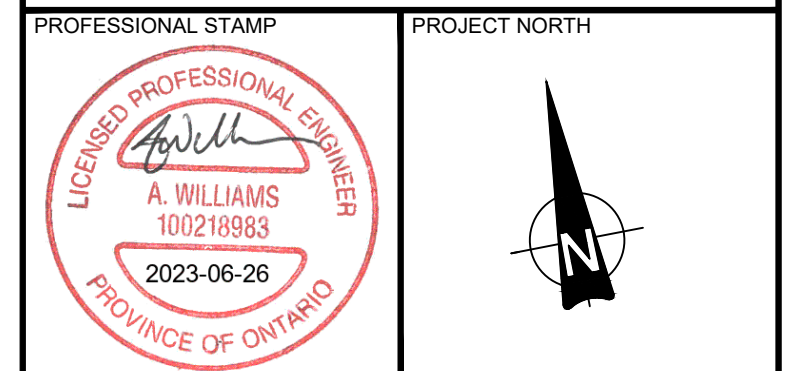
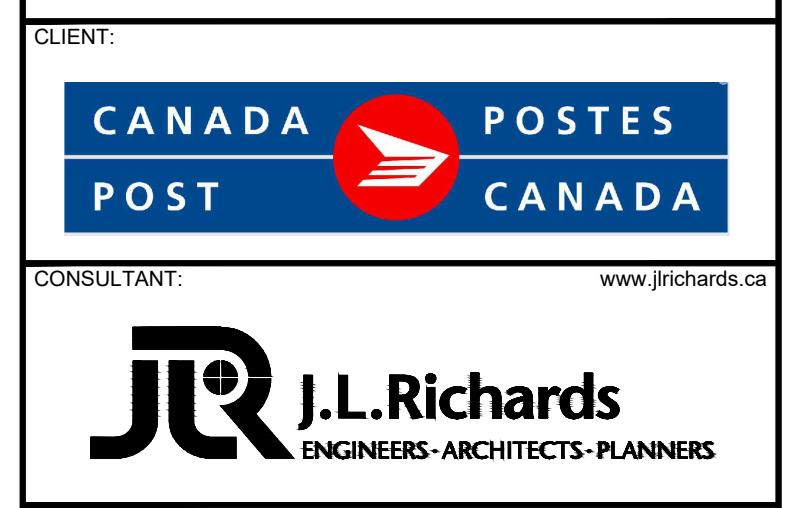
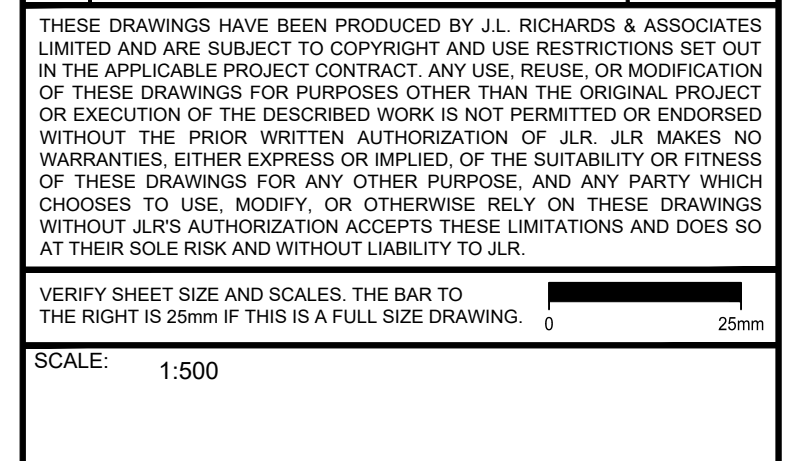
	MAXIMUM WATER LEVEL (STATIC)
	MAX. PONDING VOLUME (m³)
	AREA ID
	MAX. PONDING AREA (m²)
	MAX. WATER LEVEL (STATIC)
	PONDING DEPTH (STATIC)

No.	ISSUE / REVISION	DD/MM/YY
1	ISSUED FOR SITE PLAN CONTROL	26/06/23
0	ISSUED FOR SITE PLAN CONTROL	16/06/23

THESE DRAWINGS HAVE BEEN PRODUCED BY J.L. RICHARDS & ASSOCIATES LIMITED AND ARE SUBJECT TO COPYRIGHT AND USE RESTRICTIONS SET OUT IN THE APPLICABLE PROJECT CONTRACT. ANY USE, REUSE, OR MODIFICATION OF THESE DRAWINGS FOR PURPOSES OTHER THAN THE ORIGINAL PROJECT OR EXECUTION OF THE DESCRIBED WORK IS NOT PERMITTED OR ENDORSED WITHOUT THE PRIOR WRITTEN AUTHORIZATION OF J.L.R. J.L.R. MAKES NO WARRANTIES, EITHER EXPRESS OR IMPLIED, OF THE SUITABILITY OR FITNESS OF THESE DRAWINGS FOR ANY OTHER PURPOSE, AND ANY PARTY WHICH CHOOSES TO USE, MODIFY, OR OTHERWISE RELY ON THESE DRAWINGS WITHOUT J.L.R.'S AUTHORIZATION ACCEPTS THESE LIMITATIONS AND DOES SO AT THEIR SOLE RISK AND WITHOUT LIABILITY TO J.L.R.

VERIFY SHEET SIZE AND SCALES. THE BAR TO THE RIGHT IS 25mm IF THIS IS A FULL SIZE DRAWING.

SCALE: 1:500



PROJECT: CANADA POST CORPORATION
OTTAWA PROCESSING CENTRE
50 LEIKIN DRIVE OTTAWA, ONTARIO

DRAWING: STORM DRAINAGE AND PONDING PLAN

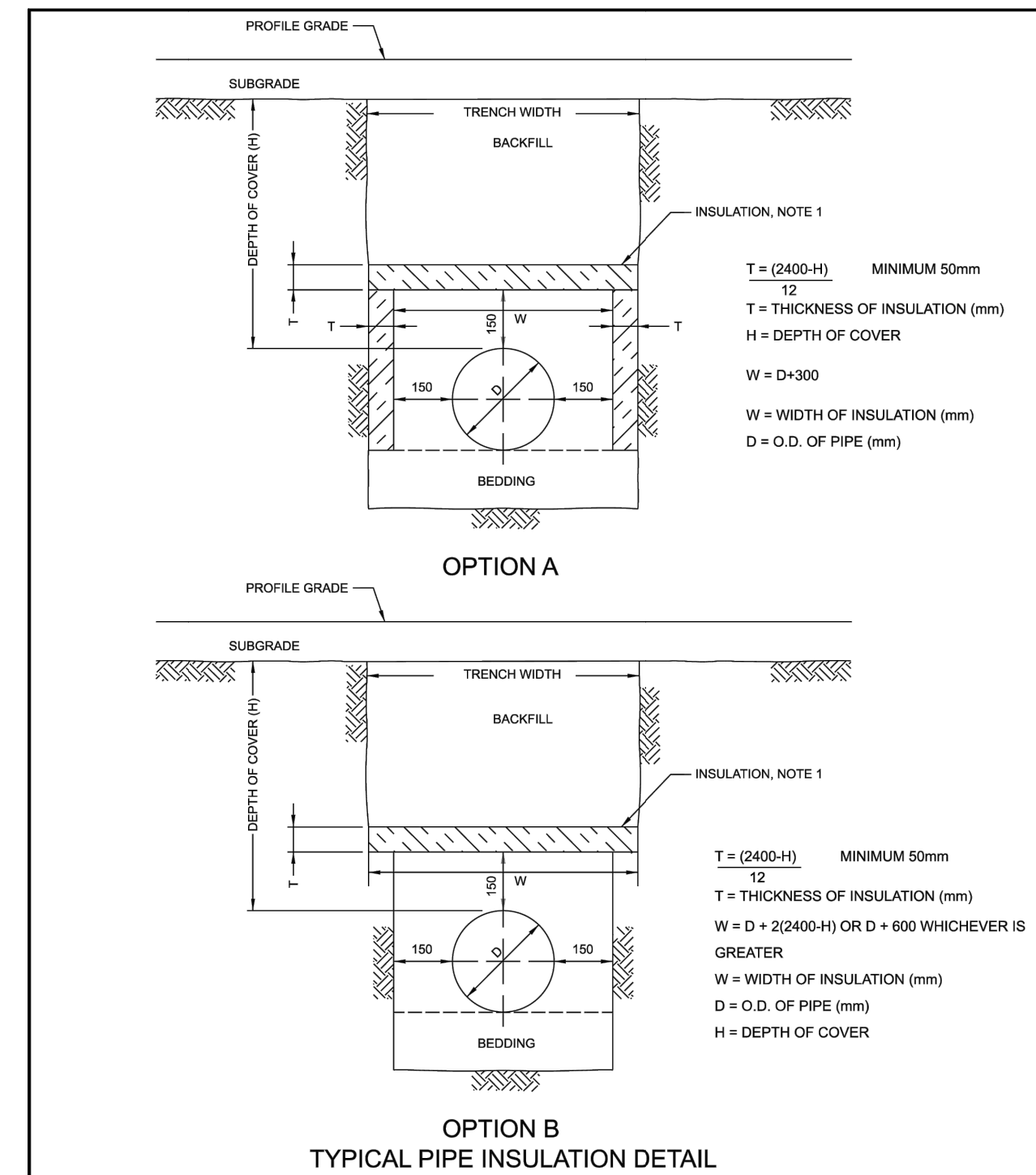
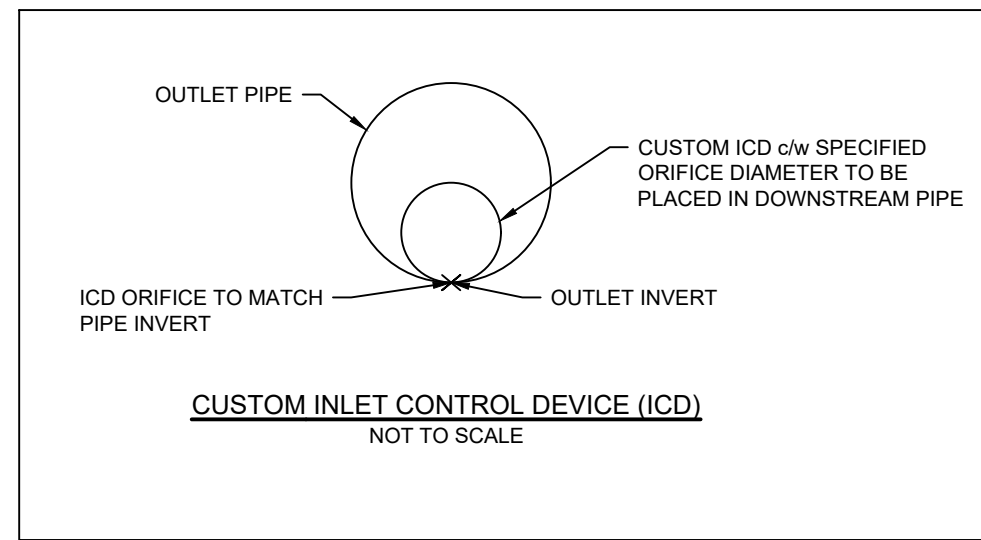
DESIGN: AW	DRAWING #: C06.1
DRAWN: NQ/KT	
CHECKED: LJ	
JLR #: 31940-000	

PRELIMINARY DESIGN
THESE DOCUMENTS ARE NOT COMPLETE IN ALL DETAILS AND ARE INTENDED TO PROVIDE CONCEPTUAL DIRECTION FOR SELECTED DESIGN BUILD PROPOSAL.

SIZE	STATION ALONG WM	DETAIL	FINISHED GRADE	TOP OF WM
200mmØ	0+000	CONNECTION TO EXISTING WM	89.89	87.49
	0+010		89.85	87.45
	0+016.01	VALVE AND BOX	89.94	87.54
	0+020		90.14	87.6
	0+030		90.64	87.7
	0+040		90.42	87.8
	0+050		90.31	87.91
	0+055.01	45° VERTICAL BEND (WM CROSSING UNDER STORM)	90.31	87.91
	0+056.79	45° VERTICAL BEND (WM CROSSING UNDER STORM)	90.27	87.02
	0+059.59	45° VERTICAL BEND (WM CROSSING UNDER STORM)	90.34	87.02
	0+060		90.36	87.02
	0+060.57	45° VERTICAL BEND (WM CROSSING UNDER STORM)	90.37	87.97
	0+064.73	CROSS	90.48	88.02
	0+070		90.62	88.22
0+071.14	REDUCER TO 150mm	90.64	88.24	
150mmØ	0+080		91.03	88.63
	0+089	CAP	91.08	88.68
200mmØ	1+000	CONNECTION TO EXISTING WM	89.89	87.49
	1+010		89.85	87.45
	1+016.01	VALVE AND BOX	89.96	87.56
	1+020		90.14	87.6
	1+030		90.64	87.7
	1+040		90.41	87.9
	1+050		90.37	87.91
	1+055.67	45° VERTICAL BEND (WM CROSSING UNDER STORM)	90.31	87.91
	1+056.65	45° VERTICAL BEND (WM CROSSING UNDER STORM)	90.33	87.04
	1+059.45	45° VERTICAL BEND (WM CROSSING UNDER STORM)	90.4	87.04
	1+060		90.42	87.04
	1+060.49	45° VERTICAL BEND (WM CROSSING UNDER STORM)	90.42	88.02
	1+062.38	45° HORZ BEND	90.47	88.02
	1+065.59	45° HORZ BEND	90.51	88.02
1+067.29	CROSS	90.48	88.02	
1+070		90.45	88.05	
1+076.1	REDUCER TO 150mm	90.67	88.1	
150mmØ	1+080		90.53	88.13
	1+090		90.66	88.26
	1+092.35	VALVE AND BOX	90.72	88.3
1+098	HYDRANT	90.71	88.31	

WATERMAIN TABLE
PEX - STA 2+000 TO 2+072

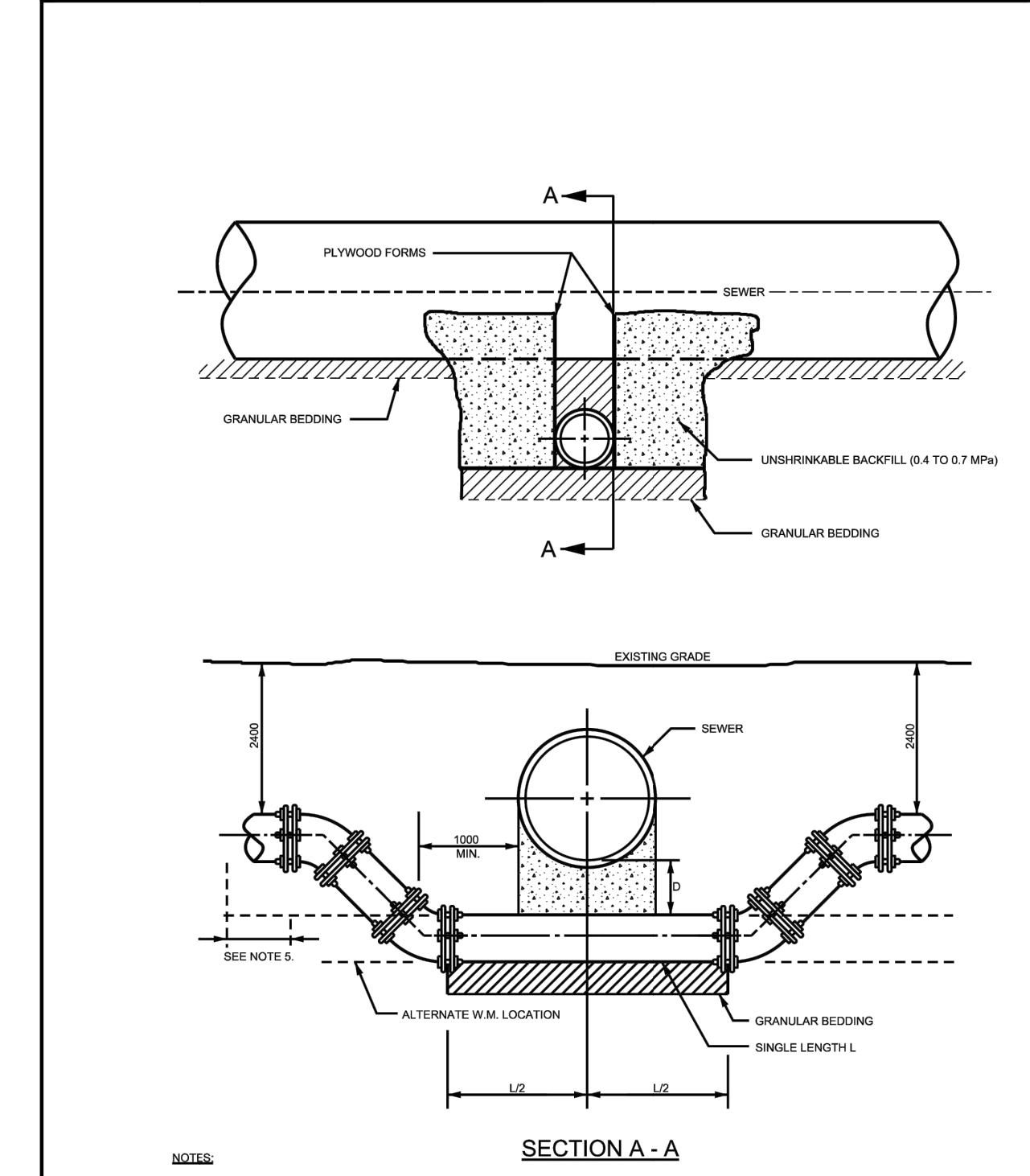
SIZE	STATION ALONG WM	DETAIL	FINISHED GRADE	TOP OF WM
190mmØ	2+000	CONNECTION AT BUILDING	89.9	87.5
	2+003.95	VALVE AND BOX	89.85	87.45
	2+010		89.76	87.36
	2+020		89.65	87.25
	2+030	WATER SERVICE CROSSING OVER STORM C/W INSULATION	89.67	87.86
	2+040		89.66	87.26
	2+050		89.81	87.41
2+060		89.96	87.56	
2+070		90.09	87.69	
2+072	CONNECTION AT GATEHOUSE	90.27	87.87	



- NOTES:
1. THE INSULATION MATERIAL SHALL BE EXTRUDED POLYSTYRENE ACCORDING TO MW-19.15 WITH A MINIMUM COMPRESSIVE STRENGTH OF 275 KPA.
 2. MINIMUM INSULATION THICKNESS SHALL BE 50MM.
 3. JOINTS SHALL BE STAGGERED FOR MULTIPLE INSULATION SHEETS.
 4. ALL DIMENSIONS ARE IN MILLIMETERS UNLESS OTHERWISE SHOWN.

Ottawa INSULATION FOR SHALLOW SEWERS

DATE: MARCH 2021
REV. DATE: ---
DWG. No.: S35



Ottawa WATERMAIN CROSSING BELOW SEWER

DATE: MAY 2021
REV. DATE: MARCH 2021
DWG. No.: W25

CROSSINGS	
CROSSING 'A':	19mmØ WATER SERVICE TO CROSS OVER 900mmØ STORM SEWER. BOTTOM OF WM = 87.86 m ST SEWER OBVERT = 87.49 m CLEARANCE = 0.37 m
CROSSING 'B':	200mmØ SANITARY SEWER TO CROSS OVER 900mmØ STORM SEWER. SAN SEWER INVERT = 88.04 m ST SEWER OBVERT = 87.48 m CLEARANCE = 0.56 m
CROSSING 'C':	200mmØ SANITARY SEWER TO CROSS OVER 600mmØ STORM SEWER. SAN SEWER INVERT = 87.23 m ST SEWER OBVERT = 86.89 m CLEARANCE = 0.34 m
CROSSING 'D':	200mmØ WATERMAIN TO CROSS UNDER 525mmØ STORM SEWER. TOP OF WM = 87.02 m ST SEWER INVERT = 87.61 m CLEARANCE = 0.59 m
CROSSING 'E':	200mmØ WATERMAIN TO CROSS UNDER 525mmØ STORM SEWER. TOP OF WM = 87.04 m ST SEWER INVERT = 87.63 m CLEARANCE = 0.59 m
CROSSING 'F':	300mmØ STORM SEWER TO CROSS OVER 750mmØ STORM SEWER. 300mmØ ST SEWER INVERT = 89.28 m 750 mmØ ST SEWER OBVERT = 88.06 m CLEARANCE = 1.22 m

PRELIMINARY DESIGN

THESE DOCUMENTS ARE NOT COMPLETE IN ALL DETAILS AND ARE INTENDED TO PROVIDE CONCEPTUAL DIRECTION FOR SELECTED DESIGN BUILD PROPOSAL.

1	ISSUED FOR SITE PLAN CONTROL	28/06/23
0	ISSUED FOR SITE PLAN CONTROL	16/06/23
No.	ISSUE / REVISION	DDMMYY
THESE DRAWINGS HAVE BEEN PRODUCED BY J.L. RICHARDS & ASSOCIATES LIMITED AND ARE SUBJECT TO COPYRIGHT AND USE RESTRICTIONS SET OUT IN THE APPLICABLE PROJECT CONTRACT. ANY USE, REUSE, OR MODIFICATION OF THESE DRAWINGS FOR PURPOSES OTHER THAN THE ORIGINAL PROJECT OR EXECUTION OF THE DESCRIBED WORK IS NOT PERMITTED OR ENDORSED WITHOUT THE PRIOR WRITTEN AUTHORIZATION OF J.L.R. J.L.R. MAKES NO WARRANTIES, EITHER EXPRESS OR IMPLIED, OF THE SUITABILITY OR FITNESS OF THESE DRAWINGS FOR ANY OTHER PURPOSE, AND ANY PARTY WHICH CHOOSES TO USE, MODIFY, OR OTHERWISE RELY ON THESE DRAWINGS WITHOUT J.L.R.'S AUTHORIZATION ACCEPTS THESE LIMITATIONS AND DOES SO AT THEIR SOLE RISK AND WITHOUT LIABILITY TO J.L.R.		
VERIFY SHEET SIZE AND SCALES. THE BAR TO THE RIGHT IS 25mm IF THIS IS A FULL SIZE DRAWING. 0 25mm		
SCALE:		
CLIENT:		
CONSULTANT:		
CONSULTANT:		
PROFESSIONAL STAMP	PROJECT NORTH	
PROJECT:		
CANADA POST CORPORATION OTTAWA PROCESSING CENTRE		
50 LEIKIN DRIVE OTTAWA, ONTARIO		
DRAWING:		
GENERAL NOTES		
DESIGN: AW	DRAWING #:	
DRAWN: NQ/KT	C08	
CHECKED: LJ	JLR #:	
JLR #: 31940-000		