

PLAN 4R-32287
 RECEIVED AND DEPOSITED
 DATE: Oct 2, 2019
 D. Bourdeau
 REPRESENTATIVE FOR
 LAND REGISTRAR FOR THE
 LAND TITLES DIVISION OF
 OTTAWA-CARLETON NO. 4.

SCHEDULE			
PART	BLOCK	PLAN	PIN
1			
2	ALL OF 2	4M-1354	ALL OF 04733-6646
3			

Part 3: Subject to easement, Inst. OC1093047.
 Parts 1, 2 and 3 together constitute all of PIN 04733-6646.

PLAN OF SURVEY OF
BLOCK 2
REGISTERED PLAN 4M-1354
CITY OF OTTAWA
 Surveyed by Annis, O'Sullivan, Vollebek Ltd.

Scale 1:1000

Metric
 DISTANCES AND COORDINATES SHOWN ON THIS PLAN
 ARE IN METRES AND CAN BE CONVERTED TO FEET BY
 DIVIDING BY 0.3048.

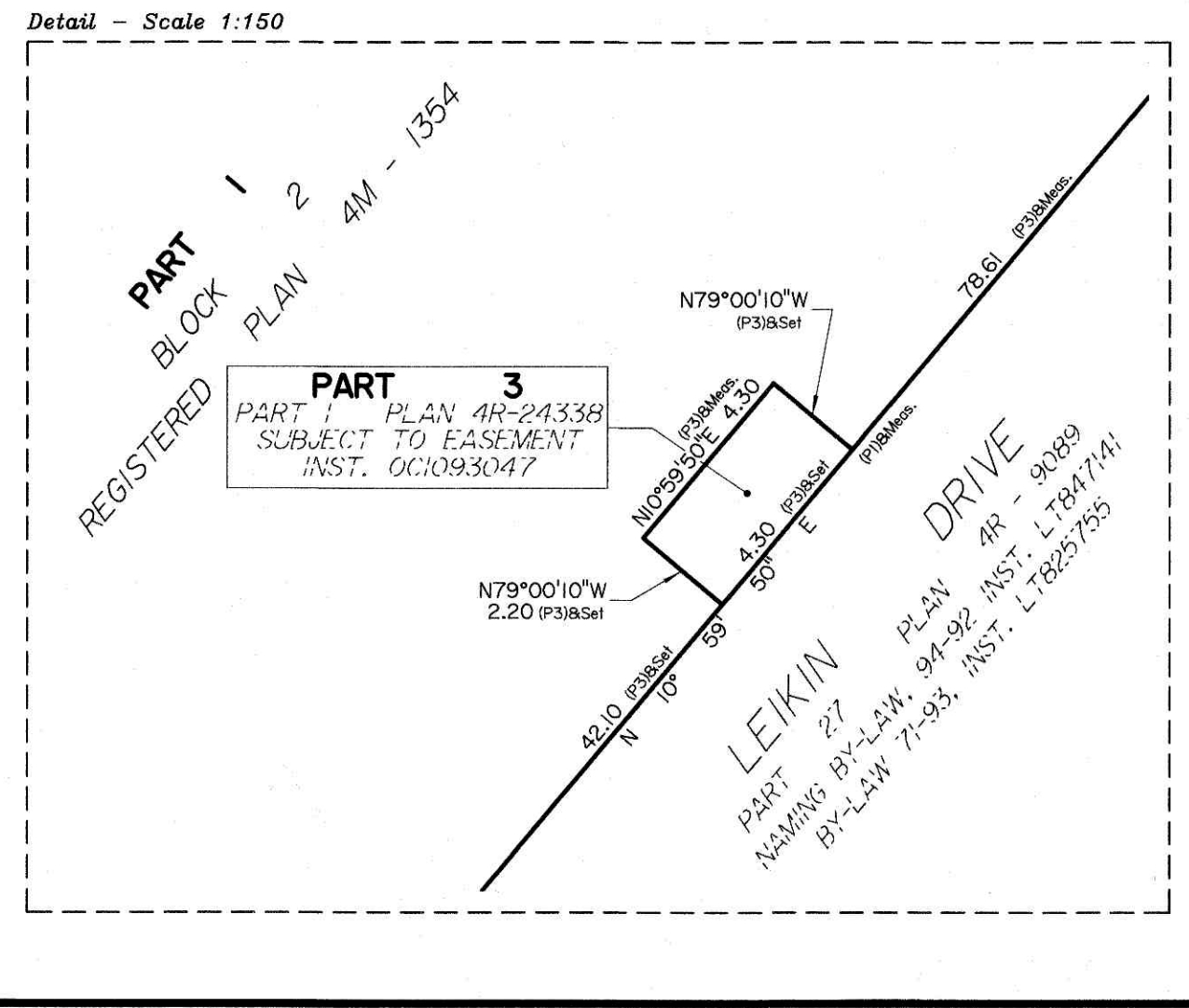
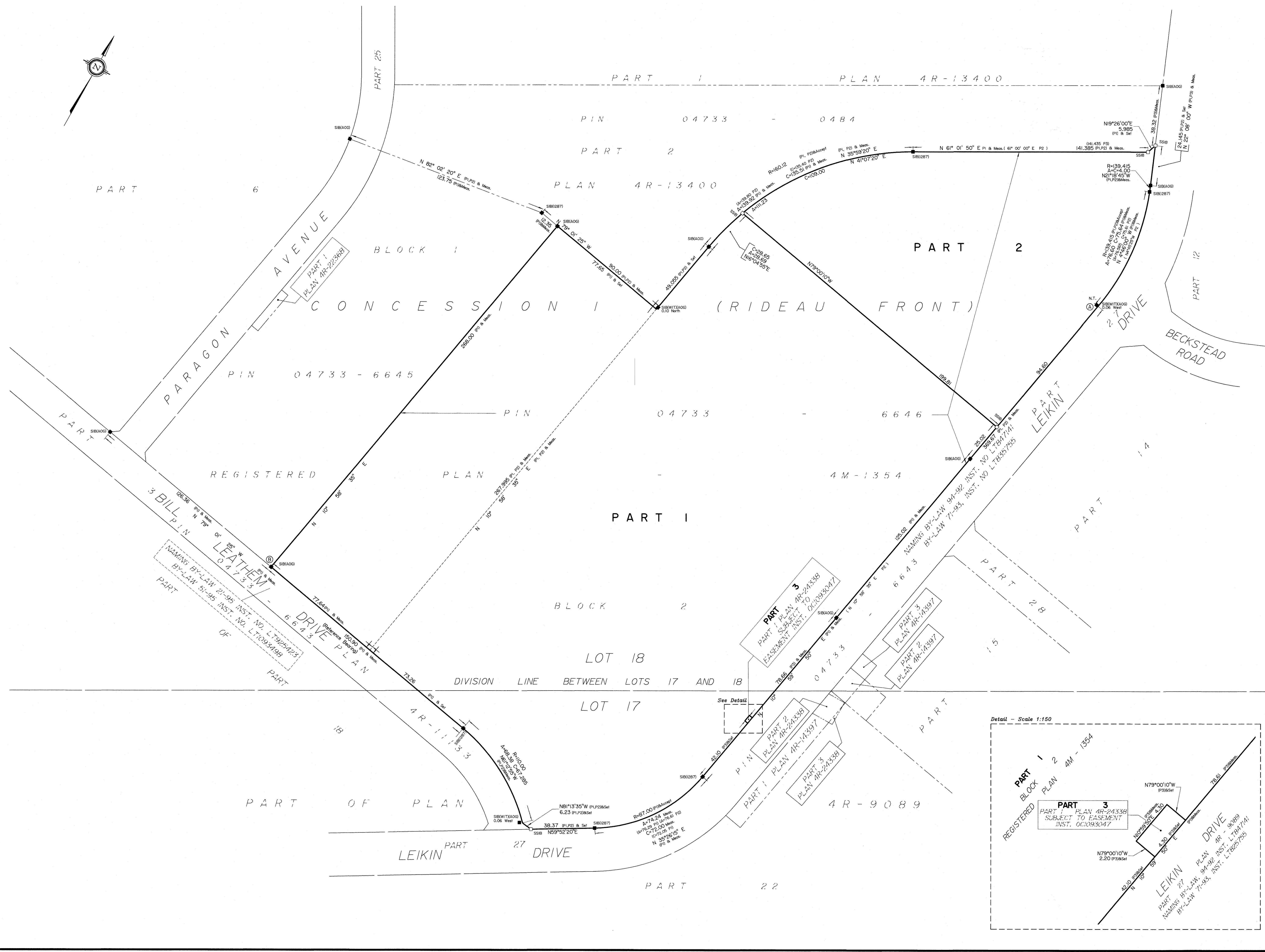
Surveyor's Certificate

- I CERTIFY THAT:
- This survey and plan are correct and in accordance with the Surveys Act, the Surveyors Act and the Land Titles Act and the regulations made under them.
 - The survey was completed on the 18th day of September, 2019.

Sept 18/19
 Date

 Ontario Land Surveyor

- Notes & Legend**
- Denotes Survey Monument Planted
 - Denotes Survey Monument Found
 - SIB = Standard Iron Bar
 - SSIB = Short Standard Iron Bar
 - IB = Iron Bar
 - WIT = Witness
 - (AOG) = Annis, O'Sullivan, Vollebek Ltd.
 - Meas. = Measured
 - NT = Non Tangential
 - (P1) = Plan 4M-1354
 - (P2) = Plan 4R-9089
 - (P3) = Plan 4R-24338



Distances shown on this plan are ground distances and can be converted to grid distances by multiplying by the combined scale factor of 0.999933.
 Bearings are grid, derived from the westerly limit of Leikin Drive, shown to be N 10°59'50" E on Registered Plan 4M-1354 and are referred to the Central Meridian of MTM Zone 9 (76°30' West Longitude) NAD-83 (original).
 Coordinates are derived from Can-Net 2016 Real Time Network GPS observations referenced to Specified Control Points 01919791338 and 01919871649, MTM Zone 9 (76°30' West Longitude) NAD-83 (original).
 Coordinate values are to urban accuracy in accordance with O. Reg. 216/10.

.01919791338	Northing	5006055.96	Easting	346140.91
.01919871649	Northing	5007189.87	Easting	372435.05
.Point A	Northing	5017899.36	Easting	367075.65
.Point B	Northing	5017520.64	Easting	366716.97

Caution: Coordinates cannot, in themselves, be used to re-establish corners or boundaries shown on this plan.