

RELATED BY LAWS:
- TREE PROTECTION BY-LAW (No. 2020-340)

REFER TO THE TREE PROTECTION NOTES, FOUND ON THE PLANS AND/OR REPORT.

PRIOR TO ANY WORK ACTIVITY, THE PLAN AND THE INSTALLED FENCE MUST BE APPROVED BY CITY FORESTRY STAFF.

TREE PROTECTION FENCE SHALL BE ERRECTED TO PROTECT AND ENCLOSE THE CRITICAL ROOT ZONE (CRZ = DBH x 10). SEE PLAN FOR LOCATION.

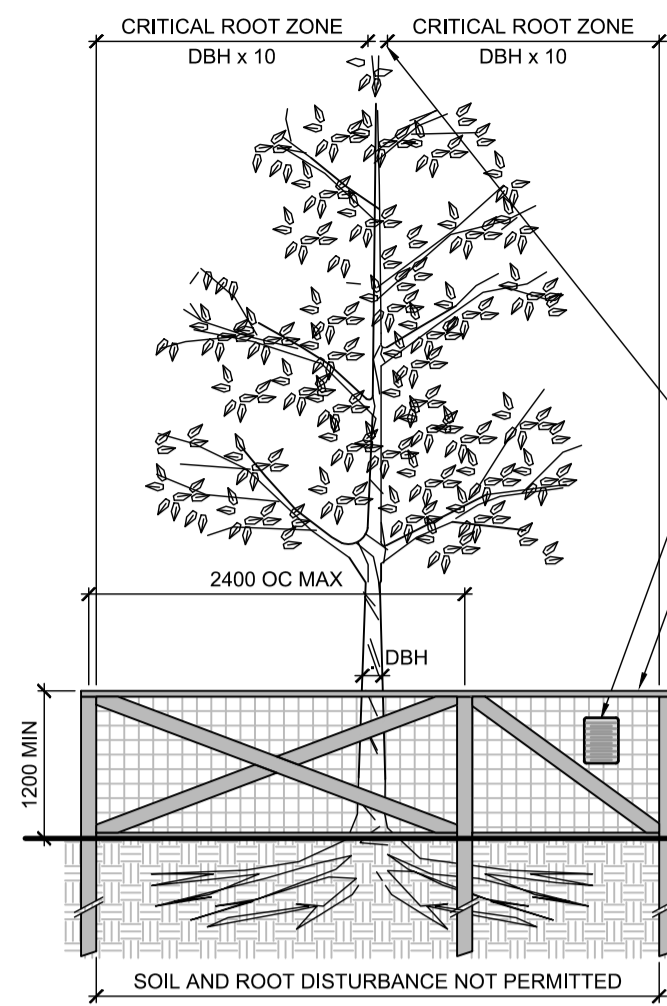
TREE PROTECTION TO REMAIN IN PLACE AND BE MAINTAINED IN GOOD CONDITION UNTIL THE SOIL/SEED IS STARTED; REMOVE FENCE AT THIS TIME.

TREE PROTECTION SIGNAGE AS PER CITY STANDARD

TREE PROTECTION FENCING MUST BE CONSTRUCTED OF RIGID OR FRAMED MATERIALS, eg.
- MODULOC - STEEL
- PLYWOOD HOARDING, OR
- SNOW FENCE ON 2x4 FRAME.

POSTS SHALL BE MAX. 2.4m APART, AND POSTS SHALL BE SECURED TO PREVENT ALTERATIONS TO THE FENCE LOCATION.

ALL SUPPORTS AND BRACING MUST BE PLACED OUTSIDE OF THE CRZ, AND INSTALLATION MUST MINIMIZE DAMAGE TO EXISTING ROOTS



TREE PROTECTION FENCE

D1

EXISTING TREE CANOPY COVER:

EXISTING CANOPY COVERAGE - As surveyed at site in 2023				
	AVERAGE EXISTING SPREAD	CANOPY COVERAGE EXISTING PER TREE	QUANTITY OF TREES	TOTAL EXISTING CANOPY COVERAGE (m ²)
Existing Large Deciduous trees (tree #6)	10m	79	1	79
Existing Medium Deciduous trees (tree #2, 4, and 5)	6m	28	3	84
Existing Small Deciduous trees (tree #1 and 3)	4.5m	16	2	32
Existing Coniferous trees on site (tree #7)	5m	20	1	20
TOTAL EXISTING CANOPY COVERAGE (m²):				215

- Area of a circle = $(r \times r) \times \pi$
- Canopy coverage per tree calculation: $(\text{average mature spread} / 2) \times (\text{average mature spread} / 2) \times \pi$
- Canopy calculations do not include Trees 8, 9 and 10 because they are on the neighbouring property.

LEGEND

- EXISTING TREE TO REMAIN, SYMBOL SIZE REFLECTS CRZ
- EXISTING TREE TO REMOVE, SYMBOL SIZE REFLECTS CRZ
- TREE PROTECTION FENCE

TREE PROTECTION

Implement the following protection measures for retained trees, both on site and on adjacent sites, prior to any work activity, including tree removal. Maintain tree protection fence in place and in good condition for the duration of site works:

- The Landscape Architect or Certified Arborist is to determine the location of the tree protection fencing and detail it on any associated plans for the site (e.g. tree conservation report, tree disclosure report, etc.).
- Under the guidance of a Landscape Architect or Certified Arborist, erect a fence at the critical root zone (CRZ) of trees. Diameter at breast height (DBH) is the trunk diameter measured at 1.3m height on the tree trunk. The CRZ is calculated as DBH x 10. Refer to the Tree Protection Fence detail.
- Refer to the Tree Protection Plan for fence location. City Forestry Staff are to approve both the plan and the installed fence prior to work commencement.
- Do not place any material or equipment within 2m of the CRZ of any tree, including outhouses.
- Do not attach any signs, notices, or posters to any tree.
- Do not disturb, raise, or lower the existing grade within the CRZ without approval.
- Only tunnel or bore when digging within the CRZ of a tree. Hand work only where required within the CRZ; absolutely no machinery permitted.
- Do not damage the root system, trunk, or branches, or any tree.
- Do not extend hard surface or significantly change landscaping.
- Ensure that exhaust fumes from all equipment are directed away from any tree canopy.
- When trees marked for removal overlap with the CRZ of trees marked for preservation: cut roots at the edge of the CRZ and grind down stumps after tree removals, do not pull out stumps. Ensure there is no root pulling or disturbance of the ground within the CRZ.
- Prior to work taking place, notify and consult the Landscape Architect and City Forestry Staff if roots must be cut. Roots 20mm or larger should be cut at right angles with clean, sharp horticultural tools without tearing, crushing, or pulling. Refer to City of Ottawa Specification S.P. F-8011 Tree Protection, Excavation of Root Zone.
- If damaged or objectionable branches are observed, consult the Landscape Architect, before any work is conducted. Do not prune leaders. Do not prune more than 1/4 of crown.
- Set up a water and fertilizing program, if trees are being affected by site works, to the satisfaction of the Landscape Architect.
- The Landscape Architect is to prescribe mitigation measures if the protected fenced area must be reduced to facilitate construction. Measures may include the placement of plywood, wood chips, or steel plating over the roots for protection. City Forestry Staff are to approve said measures prior to fence movement.
- Excavation of Root Zone: Protects municipal trees and municipal natural areas in the City of Ottawa and trees on private property in the urban area of the City of Ottawa (2020-340).

EXISTING TREE INVENTORY:

NOTE: EXISTING TREES (8, 9 AND 10) ARE OUTSIDE THE PROPERTY LINE. TREE LOCATIONS ARE SCHEMATIC ONLY.

No.	Botanical Name	Common Name	DBH (cm)	CRZ (m)	Condition	Owner	Remarks	Recomm.
1	<i>Acer platanoides</i>	Norway Maple	23.0	2.30	F	Client	Conflict	Remove
2	<i>Acer platanoides</i>	Norway Maple	25.0	2.50	F	Client	Conflict	Remove
3	<i>Acer negundo</i>	Manitoba Maple	20.0	2.00	F	Client	Conflict	Remove
4	<i>Acer negundo</i>	Manitoba Maple	25.0	2.50	F	Client	Conflict	Remove
5	<i>Acer negundo</i>	Manitoba Maple	25.0	2.50	F	Client	Conflict	Remove
6	<i>Syringa vulgaris</i>	Common Lilac	21.0	2.10	P	Client	Conflict - 6 stems - 7cm ea. Dead wood evident, low vigor, suffering lack of light, leaning	Remove
7	<i>Picea glauca</i>	White Spruce	2.0	2.00	F	Client		Remove
8	<i>Tilia americana</i>	Basswood	20.0	2.00	VP	Neighbour	Presence of insects and disease; swollen areas on trunk; leader gone, decay evident in a number of places	Remove
9	<i>Pinus strobus</i>	White Pine	10.0	1.00	G	Neighbour		PROTECT
10	<i>Picea glauca</i>	White Spruce	20.0	2.00	G	Neighbour	Conflict	Remove

Legend

G Good	Conflict	Remove due to conflict with construction.
F Fair	Remove	Remove due to tree health or invasive status.
P Poor	PROTECT	Protect trees as per contract details and specifications.
VP Very Poor		



NOTE: THE POSITION OF ALL POLE LINES, CONDUITS, WATERMANS, SEWERS AND OTHER UNDERGROUND AND OVERGROUND UTILITIES AND STRUCTURES IS NOT NECESSARILY SHOWN ON THE CONTRACT DRAWINGS, AND WHERE SHOWN, THE ACCURACY OF THE POSITION OF SUCH UTILITIES AND STRUCTURES IS NOT GUARANTEED. BEFORE STARTING WORK, DETERMINE THE EXACT LOCATION OF ALL SUCH UTILITIES AND STRUCTURES AND ASSUME ALL LIABILITY FOR DAMAGE TO THEM.

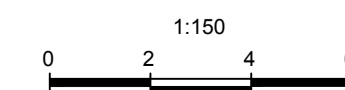
Owner:
2317916 ONT INC.
2081 MERIVALE ROAD
OTTAWA, ON K2G 1G9

NOT FOR CONSTRUCTION

No.	REVISION	DATE	BY
4.	RE-ISSUED FOR SPC	SEPT 6/24	RGJ
3.	RE-ISSUED FOR SPC	AUG 20/24	RGJ
2.	RE-ISSUED FOR SPC	JUN 26/24	RGJ
1.	ISSUED FOR SPC	JUN 13/23	RGJ

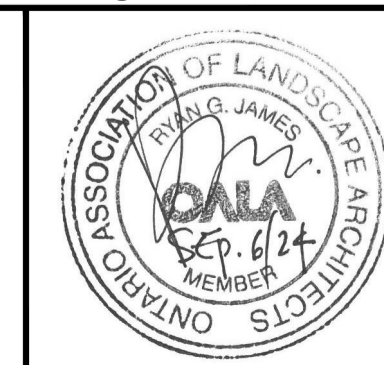
SCALE

1:150



FOR REVIEW ONLY

DESIGN	MEL
CHECKED	RGJ
DRAWN	MEL
CHECKED	RGJ
APPROVED	RGJ



NOVATECH
Engineers, Planners & Landscape Architects
Suite 200, 240 Michael Cowpland Drive
Ottawa, Ontario, Canada K2M 1P6

Telephone (613) 254-9643
Facsimile (613) 254-5867
Website www.novatech-eng.com

LOCATION
CITY OF OTTAWA
47 BEECHWOOD AVENUE

DRAWING NAME
TREE CONSERVATION PLAN 1
EXISTING CONDITION & TREE COVER

PART OF LOTS 1, 2, 3, & 4 (NORTH BEECHWOOD AVE.)
LOT 1 AND PART OF LOT 2 (WEST DOUGLAS AVE.)
REGISTERED PLAN T4
CITY OF OTTAWA

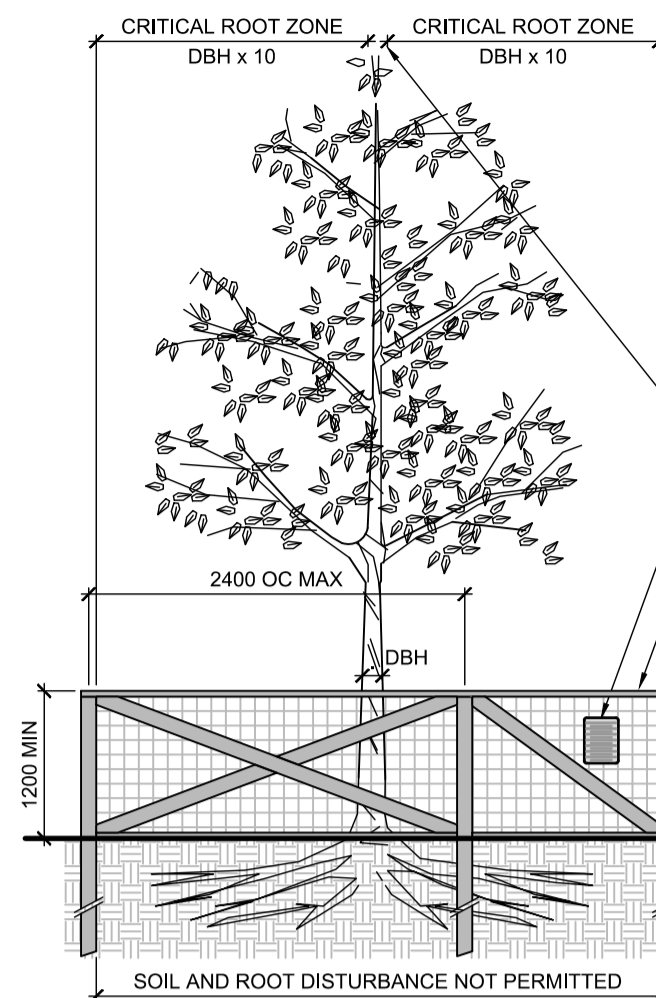
PROJECT No.
122186-00

REV # 4

DRAWING No.

122186-TCR1

RELATED BY-LAWS:
- TREE PROTECTION BY-LAW (No. 2020-340)



REFER TO THE TREE PROTECTION NOTES, FOUND ON THE PLANS AND/OR REPORT.

PRIOR TO ANY WORK ACTIVITY, THE PLAN AND THE INSTALLED FENCE MUST BE APPROVED BY CITY FORESTRY STAFF.

TREE PROTECTION FENCE SHALL BE ERRECTED TO PROTECT AND ENCLOSE THE CRITICAL ROOT ZONE (CRZ = DBH x 10). SEE PLAN FOR LOCATION.

TREE PROTECTION TO REMAIN IN PLACE AND BE MAINTAINED IN GOOD CONDITION UNTIL THE SOIL/SEED IS STARTED; REMOVE FENCE AT THIS TIME.

MEASURED FROM OUTSIDE EDGE AT BASE OF TRUNK

TREE PROTECTION SIGNAGE AS PER CITY STANDARD

TREE PROTECTION FENCING MUST BE CONSTRUCTED OF RIGID OR FRAMED MATERIALS, eg.
- MODULOC - STEEL
- PLYWOOD HOARDING, OR
- SNOW FENCE ON 2x4 FRAME.

POSTS SHALL BE MAX. 2.4m APART, AND POSTS SHALL BE SECURED TO PREVENT ALTERATIONS TO THE FENCE LOCATION.

ALL SUPPORTS AND BRACING MUST BE PLACED OUTSIDE OF THE CRZ, AND INSTALLATION MUST MINIMIZE DAMAGE TO EXISTING ROOTS

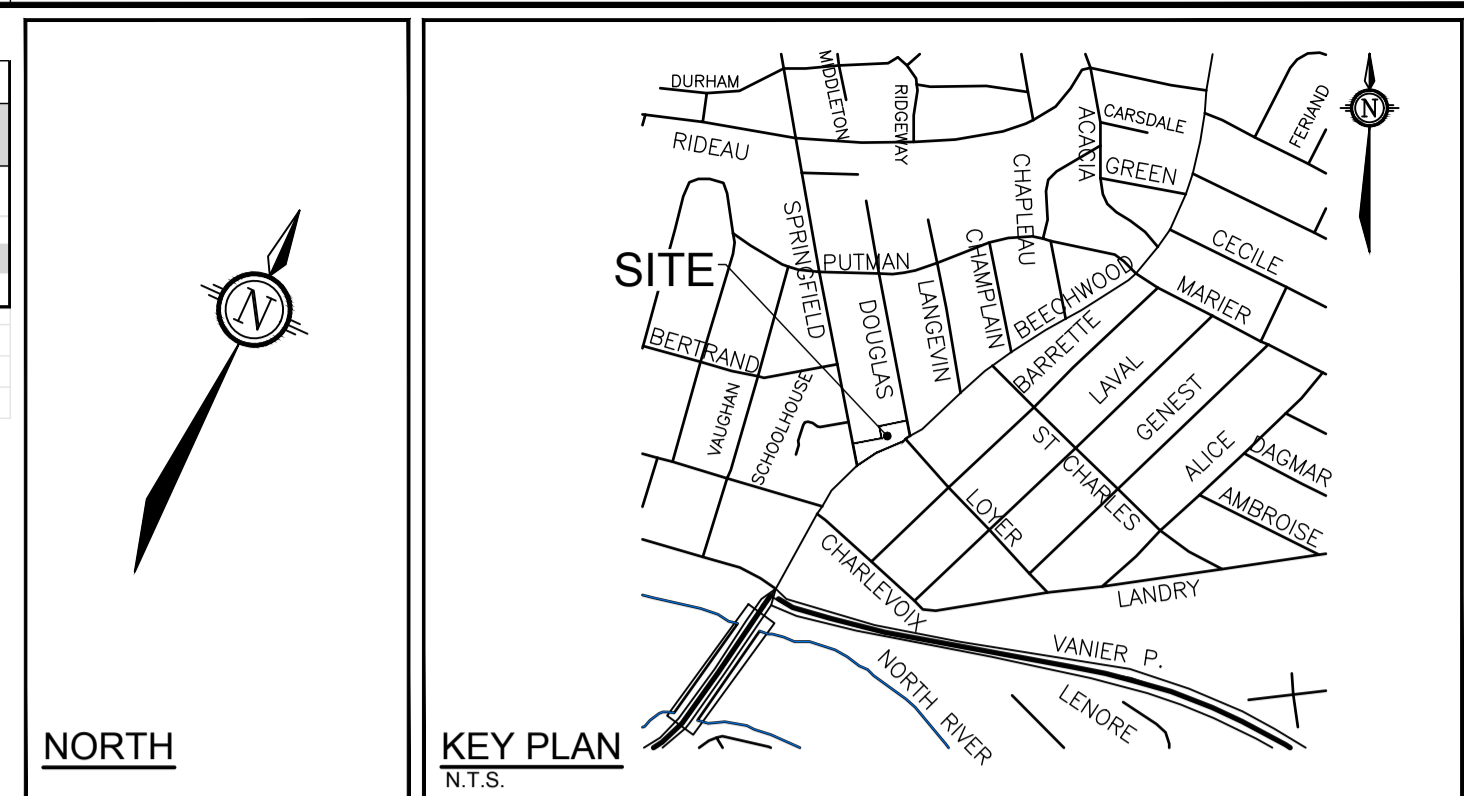
TREE PROTECTION FENCE

D1

PROPOSED & RETAINED TREE CANOPY COVER:

PROPOSED & RETAINED CANOPY COVERAGE AT MATURITY				
SIZE OF PROPOSED TREE	AVERAGE MATURE SPREAD	CANOPY COVERAGE PER TREE AT	QUANTITY OF TREES	TOTAL PROPOSED CANOPY COVERAGE AT MATURITY (m ²)
Deciduous - Small (less than 6m H)	4.5m	16	2	32
Deciduous - Medium (6m to 14m H)	11m	95	3	285
TOTAL PROPOSED CANOPY COVERAGE (m²):				317

1. Area of a circle = (r x r) x π
2. Canopy coverage per tree calculation: (average mature spread/2) x (average mature spread/2) x π
3. Canopy calculations do not include Trees 8, 9 and 10 because they are on the neighbouring property.



LEGEND

- EXISTING TREE TO REMAIN, SYMBOL SIZE REFLECTS CRZ
- EXISTING TREE TO REMOVE, SYMBOL SIZE REFLECTS CRZ
- TREE PROTECTION FENCE

TREE PROTECTION

Implement the following protection measures for retained trees, both on site and on adjacent sites, prior to any work activity, including tree removal. Maintain tree protection fence in place and in good condition for the duration of site works:

1. The Landscape Architect or Certified Arborist is to determine the location of the tree protection fencing and detail it on any associated plans for the site (e.g. tree conservation report, tree disclosure report, etc.).
2. Under the guidance of a Landscape Architect or Certified Arborist, erect a fence at the critical root zone (CRZ) of trees. Diameter at breast height (DBH) is the trunk diameter measured at 1.3m height on the tree trunk. The CRZ is calculated as DBH x 10. Refer to the Tree Protection Fence detail.
3. Refer to the Tree Protection Plan for fence location. City Forestry Staff are to approve both the plan and the installed fence prior to work commencement.
4. Do not place any material or equipment within 2m of the CRZ of any tree, including outhouses.
5. Do not attach any signs, notices, or posters to any tree.
6. Do not disturb, raise, or lower the existing grade within the CRZ without approval.
7. Only tunnel or bore when digging within the CRZ of a tree. Hand work only where required within the CRZ; absolutely no machinery permitted.
8. Do not damage the root system, trunk, or branches, or any tree.
9. Do not extend hard surface or significantly change landscaping.
10. Ensure that exhaust fumes from all equipment are directed away from any tree canopy.
11. When trees marked for removal overlap with the CRZ of trees marked for preservation: cut roots at the edge of the CRZ and grind down stumps after tree removals, do not pull out stumps. Ensure there is not root pulling or disturbance of the ground within the CRZ.
12. Prior to work taking place, notify and consult the Landscape Architect and City Forestry Staff if roots must be cut. Roots 20mm or larger should be cut at right angles with clean, sharp horticultural tools without tearing, crushing, or pulling. Refer to City of Ottawa Specification S.P. F-8011 Tree Protection, Excavation of Root Zone.
13. If damaged or objectionable branches are observed, consult the Landscape Architect, before any work is conducted. Do not prune leaders. Do not prune more than 1/4 of crown.
14. Set up a water and fertilizing program, if trees are being affected by site works, to the satisfaction of the Landscape Architect.
15. The Landscape Architect is to prescribe mitigation measures if the protected fenced area must be reduced to facilitate construction. Measures may include the placement of plywood, wood chips, or steel plating over the roots for protection. City Forestry Staff are to approve said measures prior to fence movement.
16. City of Ottawa By-law: Protects municipal trees and municipal natural areas in the City of Ottawa and trees on private property in the urban area of the City of Ottawa (2020-340).

OWNER
2317916 ONT INC.
2081 MERIVALE ROAD
OTTAWA, ON, K2G 1G9

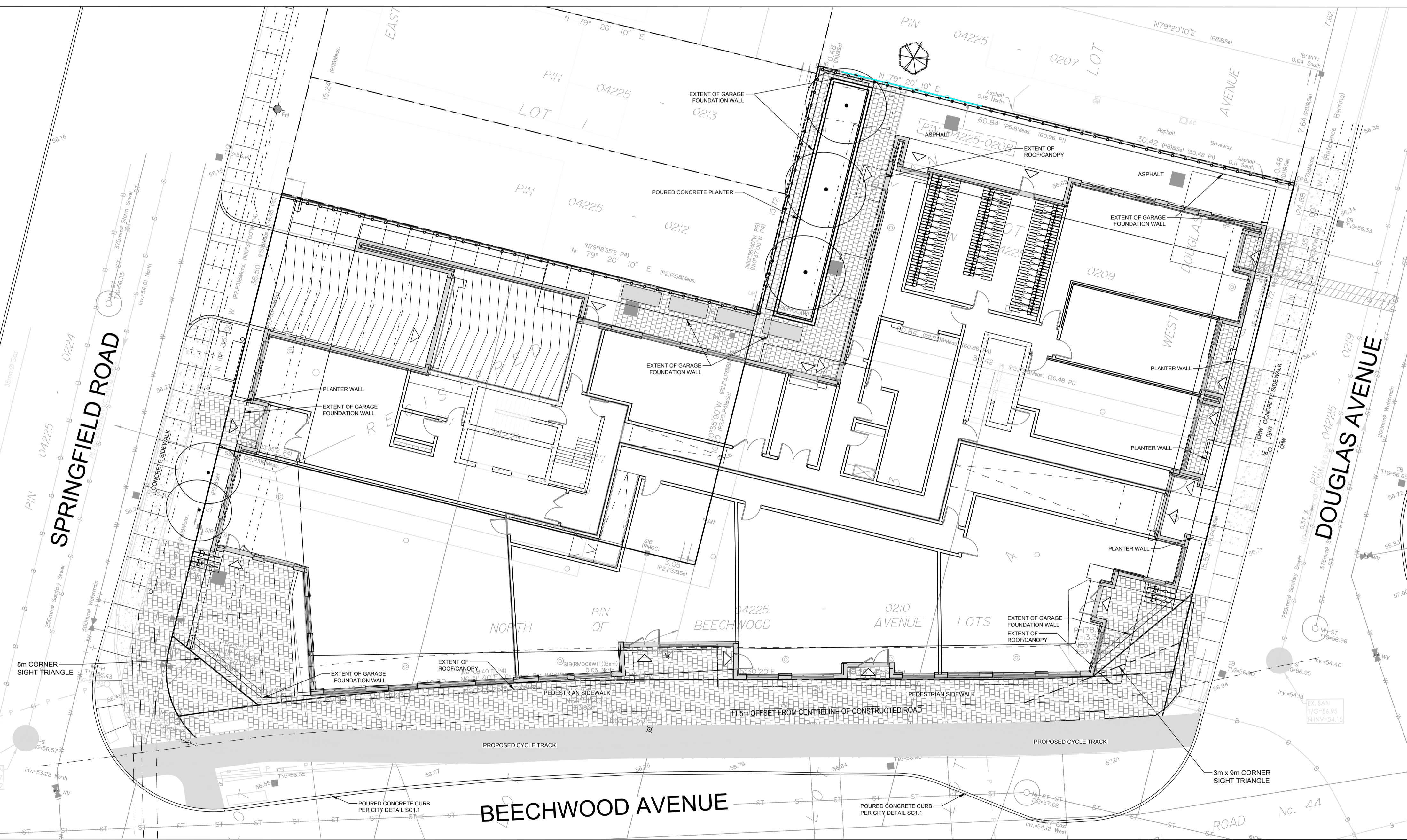
ARCHITECT
PROJECT 1 STUDIO
260 ST. PATRICK ST., SUITE 300
OTTAWA, ON, K1N 5K5

PLANNER
NOVATECH
240 MICHAEL COWPLAND DRIVE, SUITE 200
OTTAWA, ON, K2M 1P6

LANDSCAPE ARCHITECT
NOVATECH
240 MICHAEL COWPLAND DRIVE, SUITE 200
OTTAWA, ON, K2M 1P6

CIVIL ENGINEER
STANTEC
300 - 1331 CLYDE AVENUE
OTTAWA, ON, K2C 3G4

SURVEYOR
ANNIS O'SULLIVAN VOLLEBEK LTD.
14 CONCOURSE GATE, SUITE 500
OTTAWA, ON, K2E 7S6

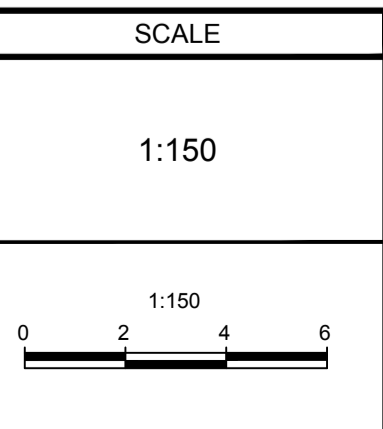


NOTE:
THE POSITION OF ALL POLE LINES, CONDUITS, WATERMANS, SEWERS AND OTHER UNDERGROUND AND OVERGROUND UTILITIES AND STRUCTURES IS NOT NECESSARILY SHOWN ON THE CONTRACT DRAWINGS, AND WHERE SHOWN, THE ACCURACY OF THE POSITION OF SUCH UTILITIES AND STRUCTURES IS NOT GUARANTEED. BEFORE STARTING WORK, DETERMINE THE EXACT LOCATION OF ALL SUCH UTILITIES AND STRUCTURES AND ASSUME ALL LIABILITY FOR DAMAGE TO THEM.

Owner:
2317916 ONT INC.
2081 MERIVALE ROAD
OTTAWA, ON, K2G 1G9
Phone: (XXX) XXX-XXXX

NOT FOR CONSTRUCTION

No.	REVISION	DATE	BY
4.	RE-ISSUED FOR SPC	SEPT 6/24	RGJ
3.	RE-ISSUED FOR SPC	AUG 20/24	RGJ
2.	RE-ISSUED FOR SPC	JUN 26/24	RGJ
1.	ISSUED FOR SPC	JUN 13/23	RGJ



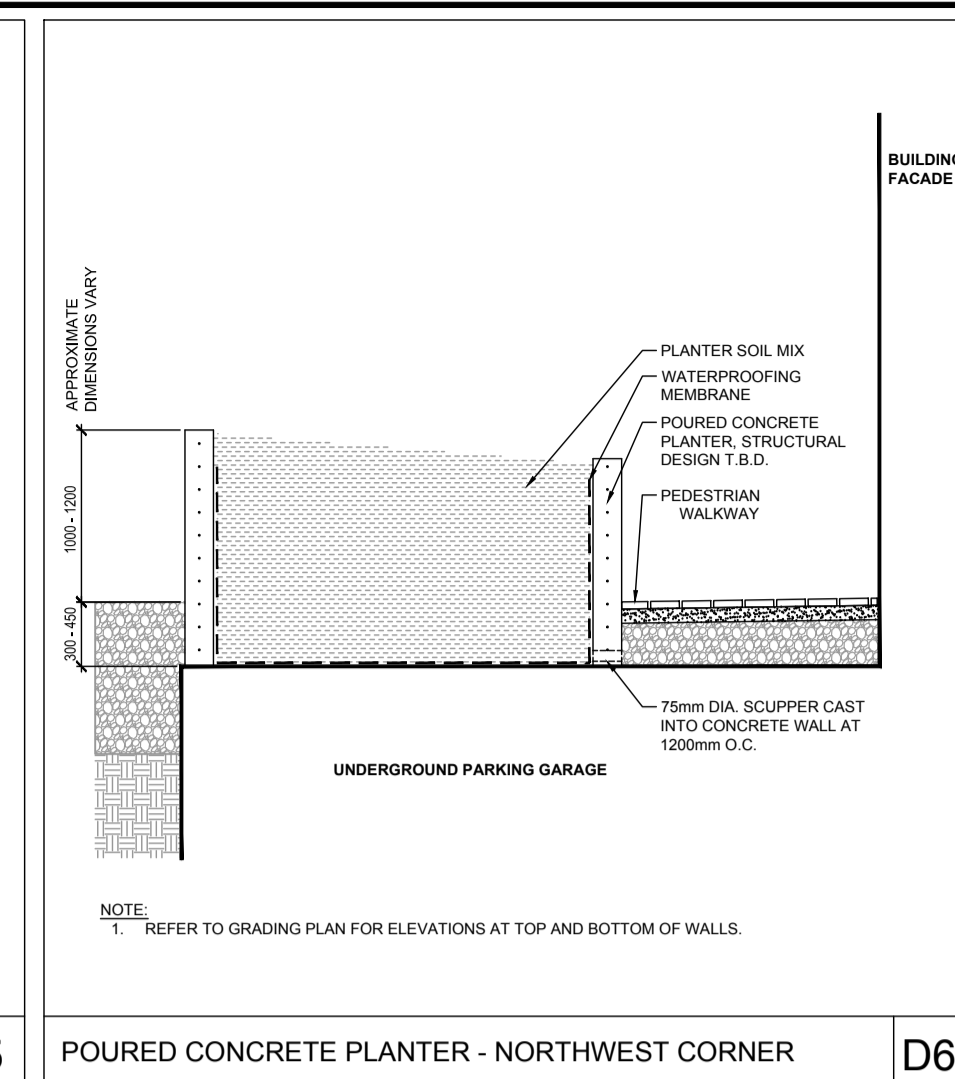
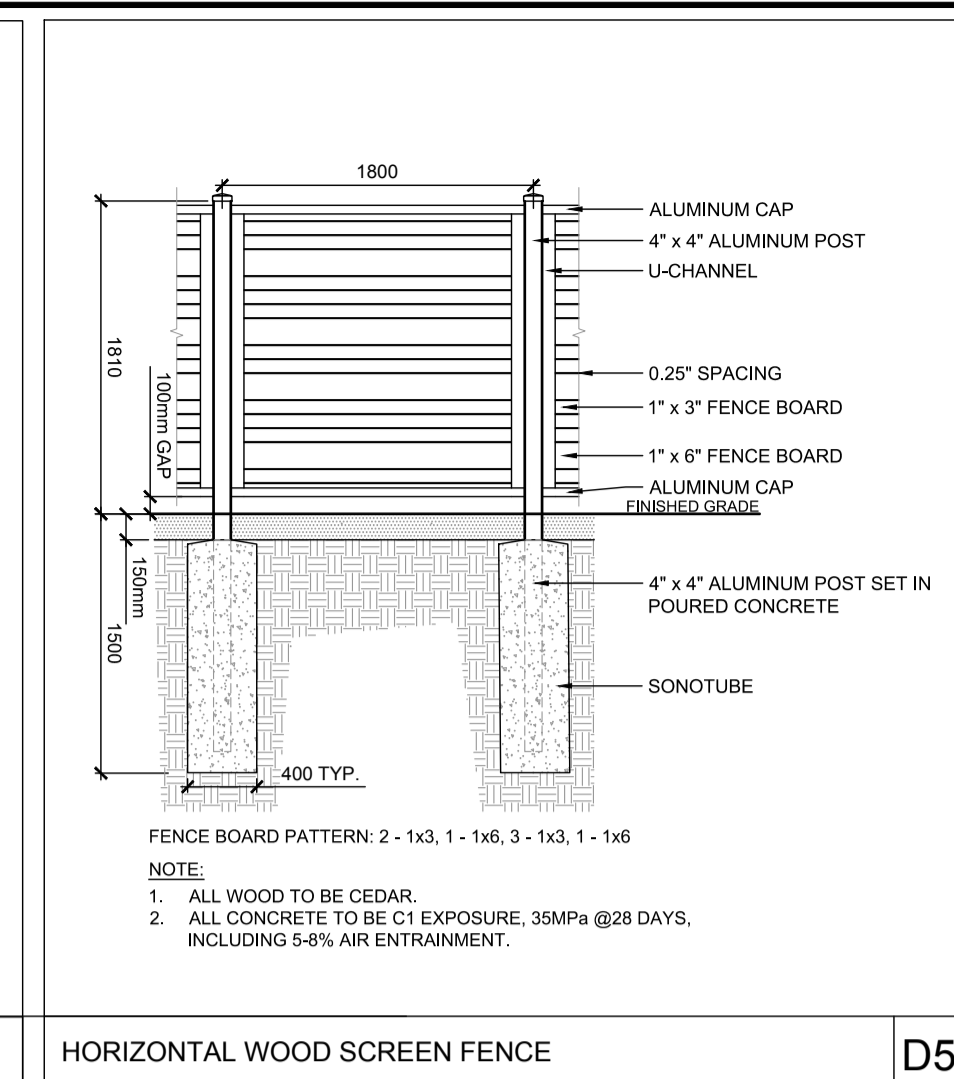
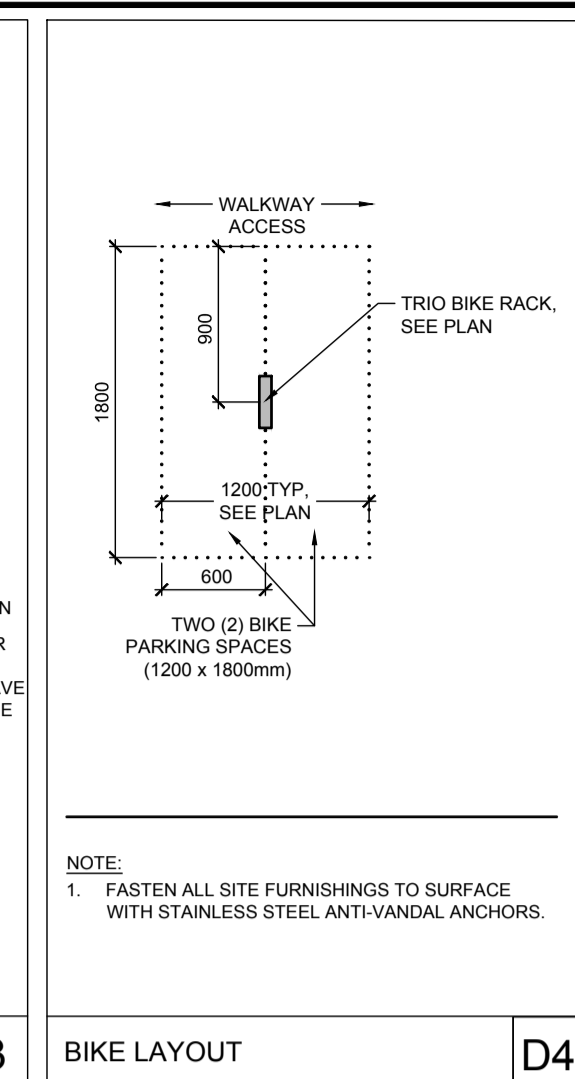
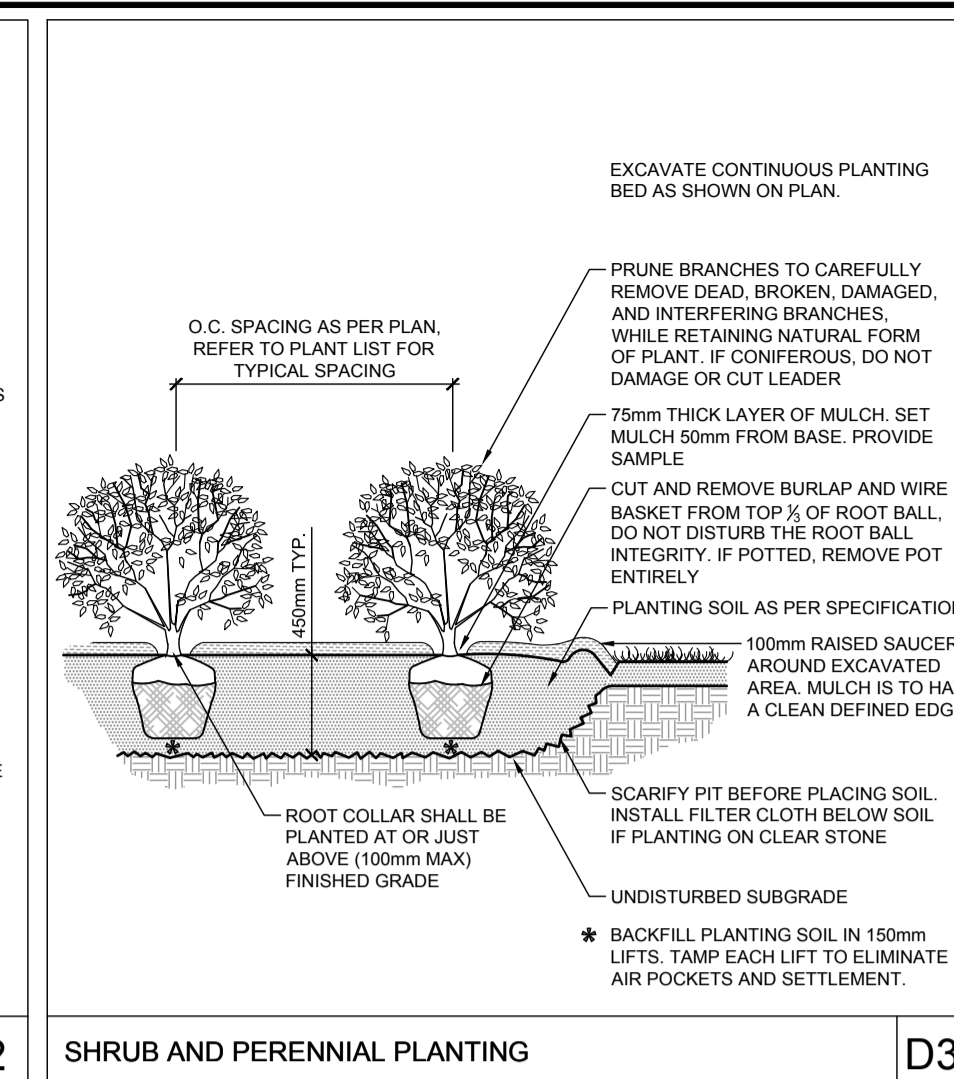
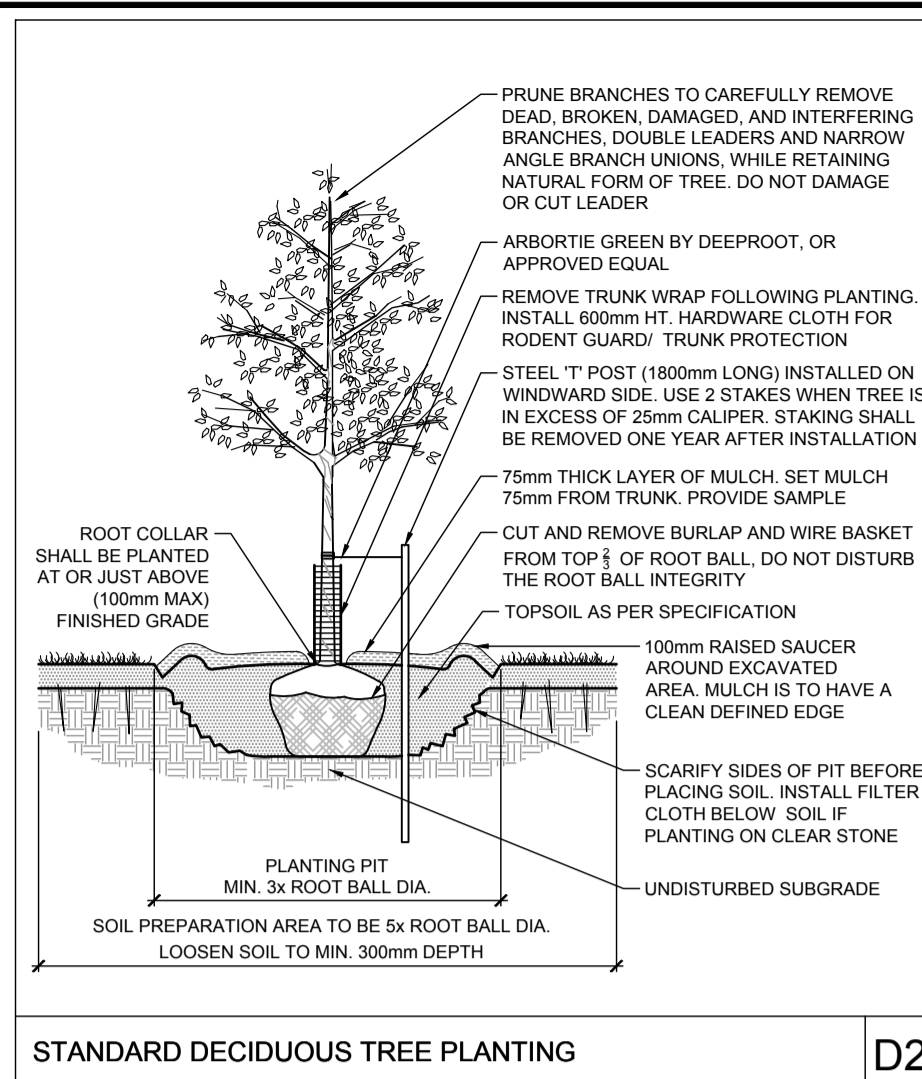
DESIGN	MEL
CHECKED	RGJ
DRAWN	MEL
CHECKED	RGJ
APPROVED	RGJ

FOR REVIEW ONLY

NOVATECH
Engineers, Planners & Landscape Architects
Suite 200, 240 Michael Cowpland Drive
Ottawa, Ontario, Canada K2M 1P6
Telephone: (613) 254-9643
Facsimile: (613) 254-5867
Website: www.novatech-eng.com

LOCATION	CITY OF OTTAWA 47 BEECHWOOD AVENUE
DRAWING NAME	TREE CONSERVATION PLAN 2 PROPOSED DEVELOPMENT & TREE COVER
PROJECT No.	122186-00
REV	REV # 4
DRAWING No.	122186-TCR2

D07-12-23-0084



OWNER
2317916 INT INC.
2081 MERIVALE ROAD
OTTAWA, ON, K2G 1G9

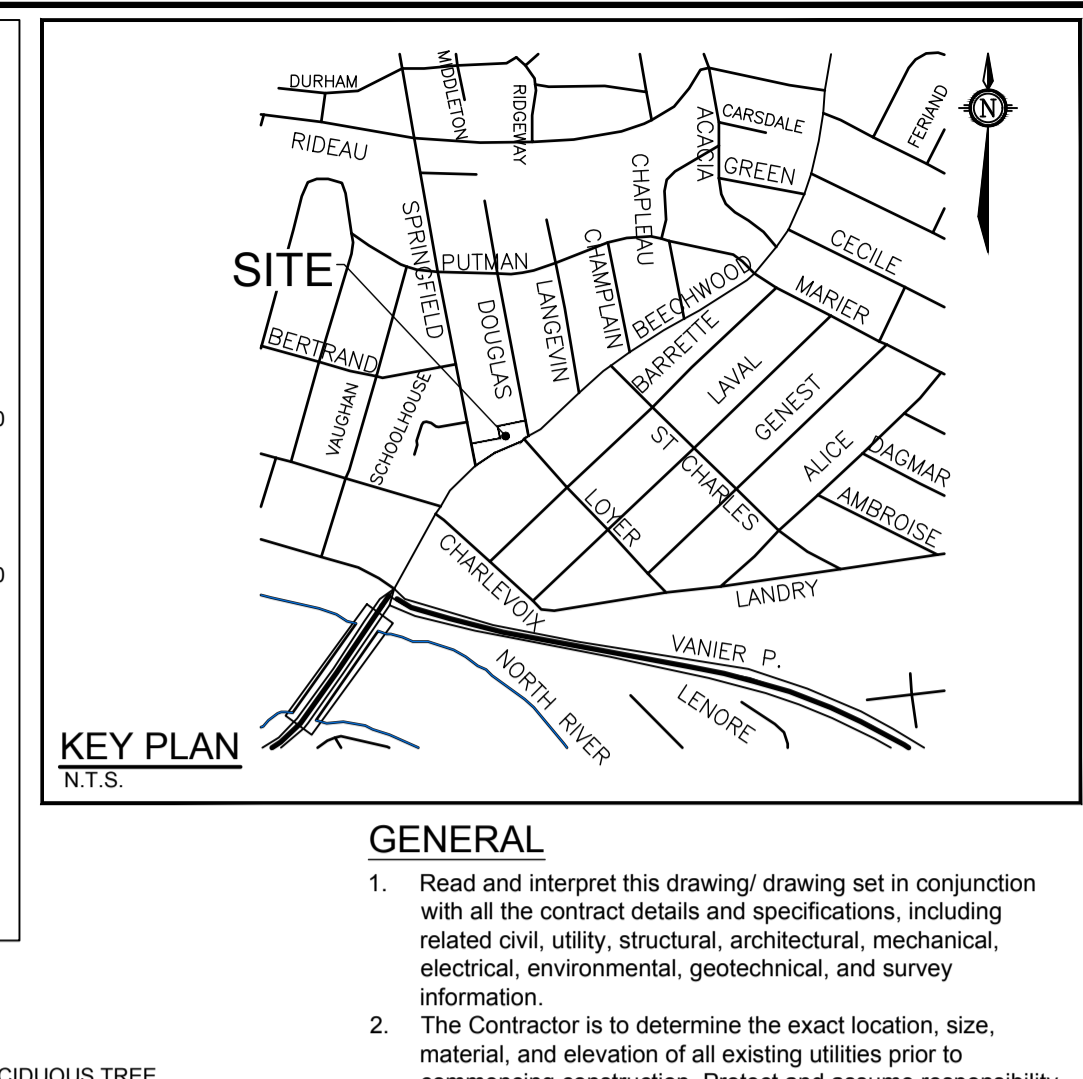
ARCHITECT
PROJECT 1 STUDIO
260 ST. PATRICK STREET, STE. 300
OTTAWA, ON, K1N 5K5

PLANNER
NOVATECH
240 MICHAEL COWPLAND DRIVE, STE. 200
OTTAWA, ON, K2M 1P6

LANDSCAPE ARCHITECT
NOVATECH
240 MICHAEL COWPLAND DRIVE, STE. 200
OTTAWA, ON, K2M 1P6

CIVIL ENGINEER
STANTEC
300 - 1331 CLYDE AVENUE
OTTAWA, ON, K2C 3G4

SURVEYOR
ANNIS O'SULLIVAN VOLLEBEKK LTD.
14 CONCORSE GATE, STE. 500
OTTAWA, ON, K2E 7S6



STANDARD DECIDUOUS TREE PLANTING D2

SHRUB AND PERENNIAL PLANTING D3

BIKE LAYOUT D4

HORIZONTAL WOOD SCREEN FENCE D5

POURED CONCRETE PLANTER - NORTHWEST CORNER D6

LEGEND

- PROPOSED DECIDUOUS TREE
- PROPOSED SHRUBS
- PROPOSED GRASSES/PERENNIALS
- SPECIES (SEE PLANT LIST)
- QUANTITY
- PROPOSED PAVERS
- CONCRETE WALKWAY
- WOOD PRIVACY FENCE 2.0m HT

PRODUCT INFORMATION

Install products as per manufacturer specifications. Shop drawings required.

PLANTER WALLS

- Tandem Wall Next by Techo-Bloc
- Location: Springfield Rd. & Douglas Ave.

PAVERS

Edge of pavers to receive edge restraint.

- Blu 60 by Techo-Bloc

FENCE

- Horizontal Wood Privacy Fence
- Panel Height: 2m
- Post Cap: TBD
- Colour: TBD

SITE FURNITURE

Fasten all site furnishings to surface with stainless steel anti-vandal anchors.

- Trio Bike Rack by Forms + Surfaces
- Powdercoat Colour: Dark Grey Metallic Texture

Trio Bike Rack
SKTRO

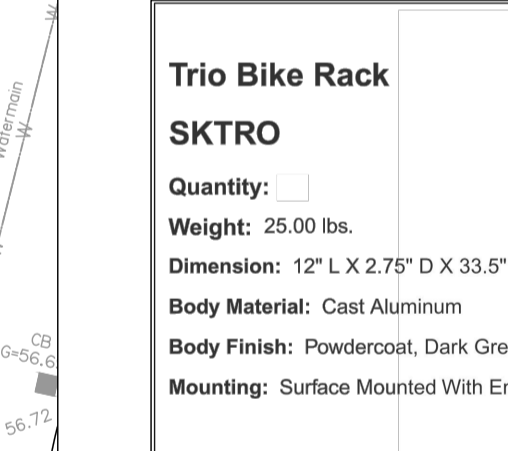
Quantity: 25.00 lbs.

Dimension: 12" L X 2.75" D X 33.5" H

Body Material: Cast Aluminum

Body Finish: Powdercoat, Dark Grey Metallic Texture

Mounting: Surface Mounted With Embedded Anchors



SOIL CALCULATIONS:

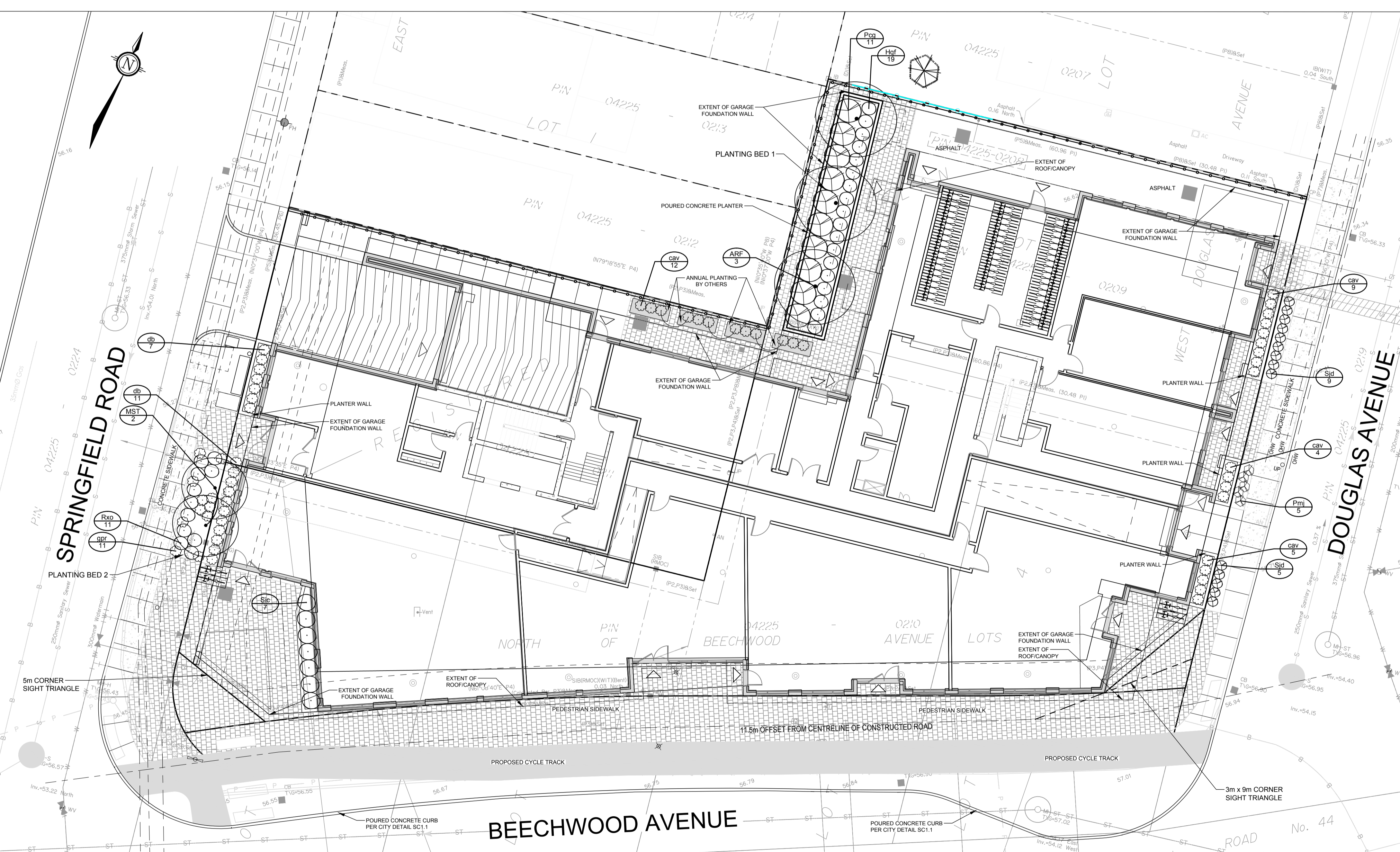
122186 - 47 Beechwood Avenue

Planting Bed No.	Available Soil Area (sq m)	Available Soil Depth (m)	Available Soil Volume (cu m)	No. of Proposed Trees				Total No. of trees	Min. required Soil Volume (cu m)
				Small 20m ² or 12m	Medium 25m ² or 15m	Large 30m ² or 18m	Evergreen 25m ² or 15m		
Planting Bed 1	33.00	1.50	49.50	0	3	0	0	3	45m ³
Planting Bed 2	20.80	1.2m	24.96	2	0	0	0	2	24m ³

PLANT LIST

122186 - Plant List

KEY	QTY	BOTANICAL NAME	COMMON NAME	OWNERSHIP	COMMENT	SIZE	COND	SPACING
Deciduous Trees								
ARF	3	<i>Acer rubrum</i> 'Autumn Flame'	Autumn Flame Red Maple	Private	Native Cultivar	50mm Cal	WB	As Shown
MST	2	<i>Malus</i> 'Sugar Tyme'	Sugar Tyme Crabapple	City	Non Native	50mm Cal	WB	As Shown
Coniferous Shrubs								
Fm	5	<i>Pinus mugo</i> 'Jakobsen'	Jakobsen Mugo Pine	City		40cm Spr	BB	As Shown
Deciduous Shrubs								
Hdf	19	<i>Hydrangea pan.</i> 'Tiny Quick Fire' (S/M/N/PSB)	Tiny Quick Fire Hydrangea	Private		40cm Ht	PT	As Shown
Pcg	11	<i>Physocarpus opulifolius</i> 'Centre Glow'	Centre Glow Ninebark	Private		60cm Ht	PT	As Shown
Rxo	11	<i>Rosa x</i> 'Italian Ice'	Oso Easy Italian Ice Rose	City		50cm Ht	PT	As Shown
Sjd	14	<i>Spiraea japonica</i> 'Double Play Candy Corn'	Double Play Candy Corn Spiraea	City		50cm Ht	PT	As Shown
Sic	7	<i>Stephanandra incisa</i> 'Crisp'	Cutleaf Stephanandra	Private		40cm Ht	PT	As Shown
Perennials								
gpr	11	<i>Geranium</i> 'Rozanne'	Rozanne Cranesbill	City		1g	PT	As Shown
Ornamental Grasses								
cav	30	<i>Calamagrostis acutiflora</i> 'Avalanche'	Avalanche Feather Reed Grass	Private		1g	PT	As Shown
db	18	<i>Deschampsia cespitosa</i> 'Bronzeschleier'	Bronze Veil Tufted Hair Grass	Private		1g	PT	As Shown



NOT FOR CONSTRUCTION

No.	REVISION	DATE	BY
4.	RE-ISSUED FOR SPC	SEPT 6/24	RGJ
3.	RE-ISSUED FOR SPC	AUG 20/24	RGJ
2.	RE-ISSUED FOR SPC	JUN 26/24	RGJ
1.	ISSUED FOR SPC	JUN 13/23	RGJ

SCALE

1:150

0 2 4 6

DESIGN

MEL

CHECKED

RGJ

DRAWN

MEL

CHECKED

RGJ

APPROVED

RGJ

FOR REVIEW ONLY

ASSOCIATION OF LANDSCAPE ARCHITECTS

MEMBER

SEP 6/24

NOVATECH

Engineers, Planners & Landscape Architects

Suite 200, 240 Michael Cowpland Drive
Ottawa, Ontario, Canada K2M 1P6

Telephone (613) 254-9643
Facsimile (613) 254-5867
Website www.novatech-eng.com

LOCATION
CITY OF OTTAWA
47 BEECHWOOD AVENUE

DRAWING NAME
LANDSCAPE PLAN

PROJECT No.
122186-00

REV #
REV # 4

DRAWING No.
122186-LP1

PART OF LOTS 1, 2, 3, & 4 (NORTH BEECHWOOD AVE.) LOT 1 AND PART OF LOT 2 (WEST DOUGLAS AVE.) REGISTERED PLAN T4 CITY OF OTTAWA

D07-12-23-0084