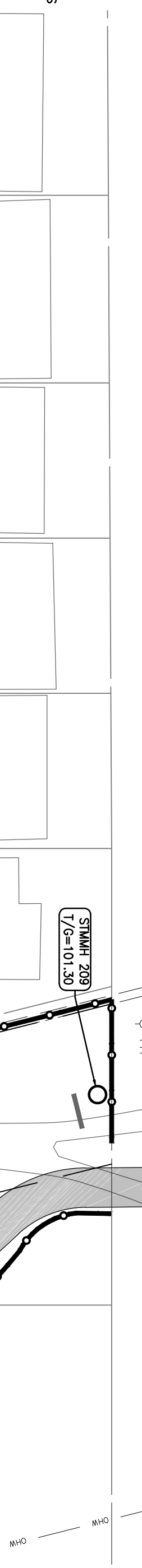
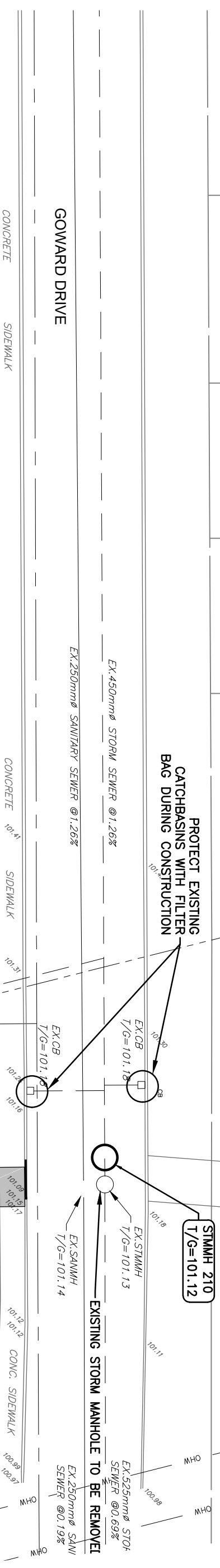
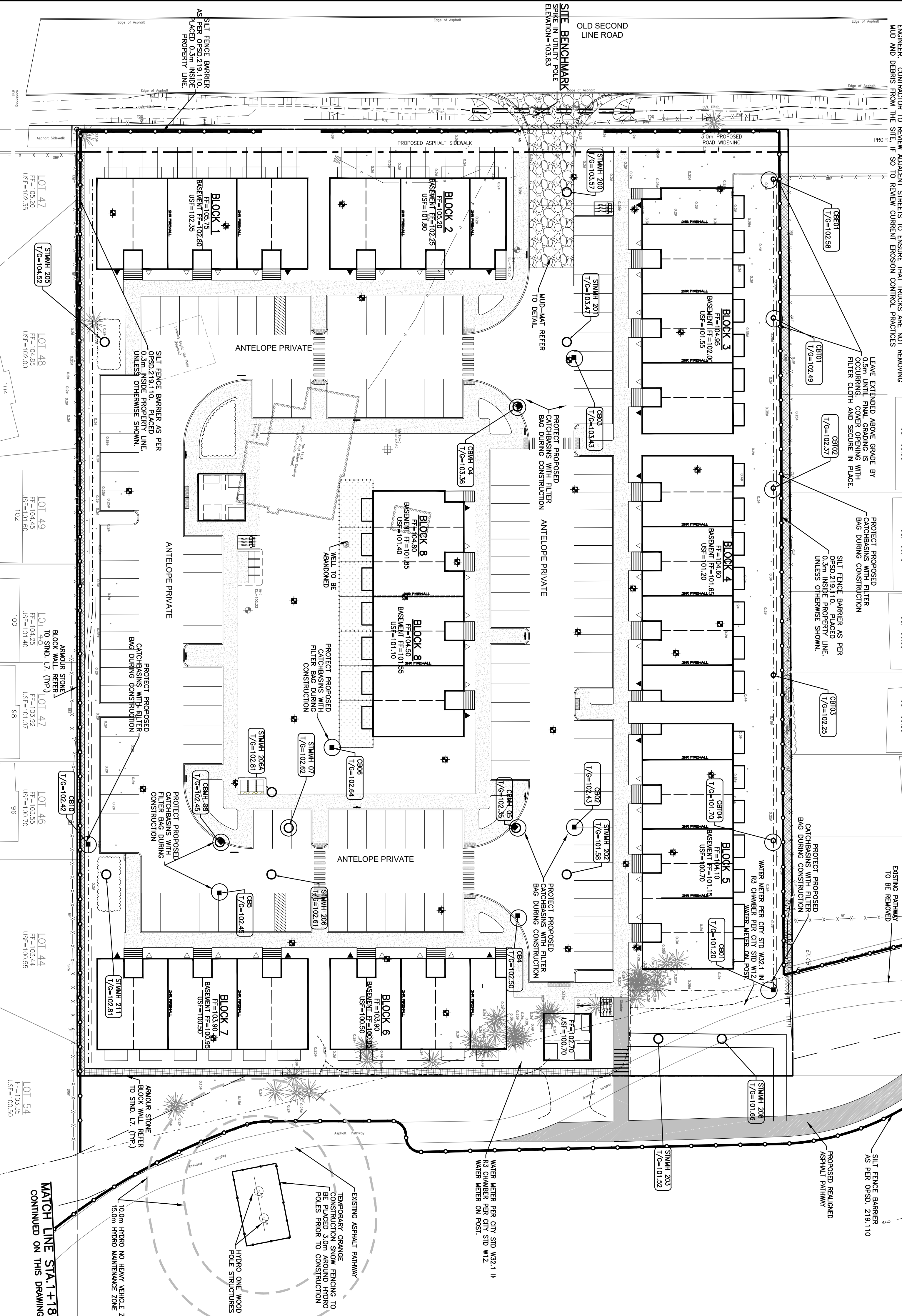


EROSION AND SEDIMENT CONTROLS DURING CONSTRUCTION

DURING ALL CONSTRUCTION ACTIVITIES, EROSION AND SEDIMENTATION SHALL BE CONTROLLED BY THE FOLLOWING TECHNIQUES:

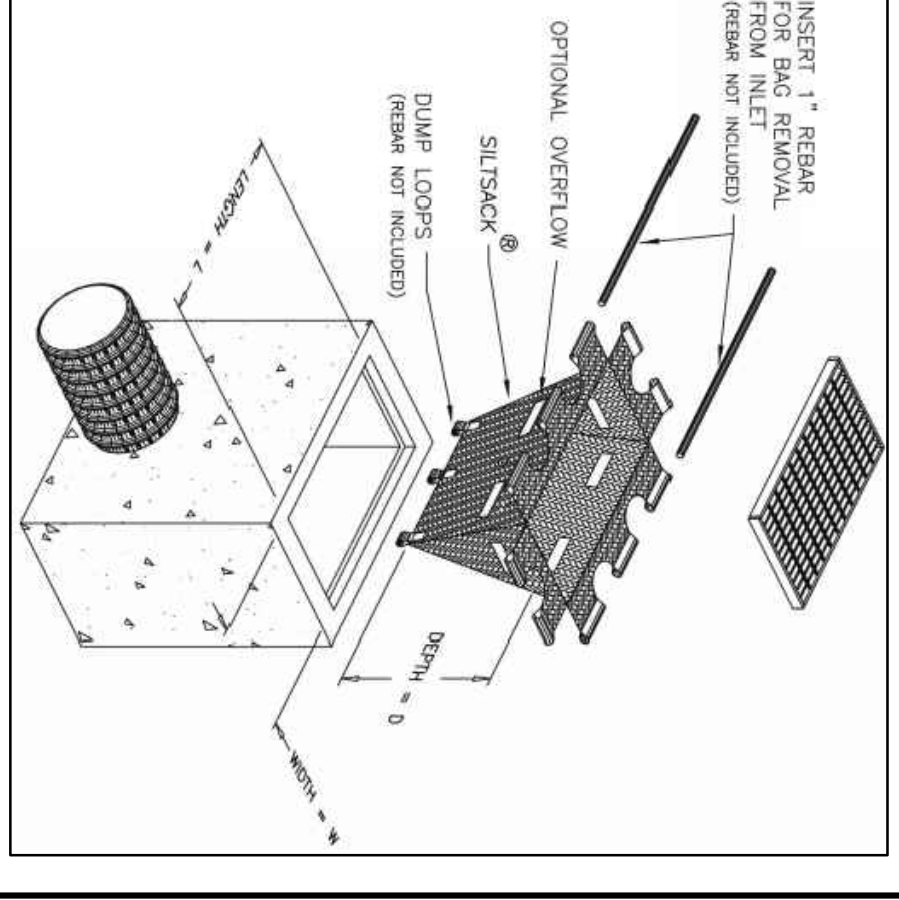
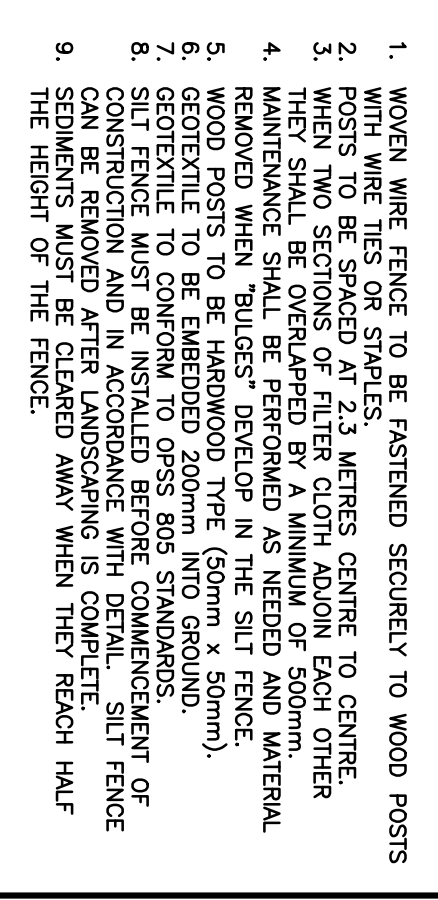
1. LIMITING THE EXTENT OF EXPOSED SOILS AT ANY GIVEN TIME.
2. REVEGETATION OF EXPOSED AREAS AS SOON AS POSSIBLE.
3. MINIMIZATION OF AREA TO BE CLEARED AND DISRUPTION TO ADJACENT AREAS.
4. INSTALLATION OF FILTER BAGS IN ALL PROPOSED CATCH BASINS AND CATCH BASIN MANHOLES.
5. A SILT FENCE TO BE INSTALLED 0.3m INSIDE THE SITE PROPERTY LINE TO LOCATIONS SHOWN ON THIS DRAWING.
6. A VISUAL INSPECTION SHALL BE COMPLETED DAILY ON SEDIMENT CONTROL BARRIERS AND ANY DAMAGE REPAIRED IMMEDIATELY. CARE WILL BE TAKEN TO PREVENT DAMAGE DURING CONSTRUCTION OPERATIONS.
7. IN SOME CASES SOME BARRIERS MAY BE REMOVED TEMPORARILY TO ACCOMMODATE THE CONSTRUCTION OPERATIONS. THE AFFECTED BARRIERS WILL BE REINSTATED AT NIGHT WHEN CONSTRUCTION IS COMPLETED.
8. THE SEDIMENT CONTROL DEVICES WILL BE CLEARED OF ACCUMULATED SILT AS REQUIRED. THE DEPOSITS WILL BE DISPOSED OF AS PER THE REQUIREMENTS OF THE CONTRACT.
9. DURING THE COURSE OF CONSTRUCTION IF THE ENGINEER BELIEVES THAT ADDITIONAL PREVENTION METHODS ARE REQUIRED TO CONTROL EROSION AND SEDIMENTATION, THE CONTRACTOR WILL INSTALL ADDITIONAL SILT FENCES OR OTHER METHODS AS REQUIRED TO THE SATISFACTION OF THE ENGINEER.
10. CONSTRUCTION AND MAINTENANCE REQUIREMENTS FOR EROSION AND SEDIMENT CONTROLS TO COMPLY WITH ONTARIO PROVINCIAL STANDARD SPECIFICATION (O.P.S.S.) CROSS ROAD, AND CITY OF OTTAWA SPECIFICATIONS.
11. THE CONTRACTOR SHALL PROVIDE SWEEPING ON ADJACENT STREETS TO THE SATISFACTION OF THE MUD AND DEBRIS FROM THE SITE. IT IS TO REVIEW CURRENT EROSION CONTROL PRACTICES.



- NOTES:**
1. STONE - USE CLEAR CRUSHED 100mm STONE.
 2. LENGTH - AS REQUIRED BUT NOT LESS THAN 15.0m.
 3. THICKNESS - NOT LESS THAN 300mm.
 4. WIDTH - 6.7m MINIMUM, NOT LESS THAN THE WIDTH AT POINTS WHERE INDESS OR EGRESS OCCURS.
 5. FILTER CLOTH - WILL BE PLACED OVER THE ENTIRE AREA PRIOR TO FLAGGING STONE.
 6. MAINTENANCE - THE ENTRANCE SHALL BE MAINTAINED IN A CONDITION WHICH WILL PREVENT TRACKING OR FLOWING OF SEDIMENT ONTO PUBLIC RIGHT-OF-WAY. THIS MAY REQUIRE PERIODIC TOP DRESSING WITH ADDITIONAL STONE AS CONDITIONS DEMAND AND REPAIR AND/OR CLEAN SPILLED, DRIPPED OR TRACKED ONTO THE PUBLIC RIGHT-OF-WAY MUST BE REMOVED IMMEDIATELY.
 7. PERIODIC INSPECTION AND NEEDED MAINTENANCE SHALL BE PROVIDED AFTER EACH RAIN.

MUD MAT DETAIL

**CONTINUED ON THIS DRAWING
MATCH LINE STA 1+180**



EROSION AND SEDIMENT CONTROL PLAN

CONNECT TO EXISTING 200mm^Ø PVC 818 WATERMAIN @ 7m-439.50. WATERMAIN CONNECTION BY CITY OF OTTAWA FORCES. REINSTATEMENT BY CONTRACTOR.

THEBERGE HOMES
1600 LAFERRIERE AVENUE, SUITE 205
OTTAWA, ON, K1Z 8P5
613.421.1515

exp.

LICENCED PROFESSIONAL ENGINEER
B. B. THOMPSON
2023-1-11
CREATING GREEN CITIES

| REV | DESCRIPTION | DATE | BY | APP |
|-----|---------------------------|----------|-----|-----|
| 1 | ISSUED FOR APPROVAL | 14/06/23 | SAB | BMT |
| 2 | REVISED PER CITY COMMENTS | 17/11/23 | AMS | BMT |

PROTECT EXISTING CATCHBASINS WITH FILTER BAGS DURING CONSTRUCTION

PROTECT EXISTING CATCHBASINS WITH FILTER BAGS DURING CONSTRUCTION

PROTECT EXISTING CATCHBASINS WITH FILTER BAGS DURING CONSTRUCTION

CAUTION: OF ALL POLE LINES, CONDUITS, WATERMANS, SEWERS AND OTHER UNDERGROUND AND OVERGROUND UTILITIES SHOWN HEREIN IS NOT KNOWN AND WHERE SHOWN, THE ACCURACY OF THE POSITION OF SUCH UTILITIES AND DEPTHS THEREOF IS NOT GUARANTEED. BEFORE STARTING WORK, DETERMINE THE EXACT LOCATION OF ALL SUCH UTILITIES FOR DAMAGE TO THEM.

LEGEND

- PROPOSED CURB
- PROPERTY LINE
- SILT FENCE

KEY PLAN

OLD SECOND LINE ROAD
MARCH ROAD
ROBBET ROAD
OTTAWA RIVER
SITE LOCATION

SECOND LINE ROAD
1158 OLD SECOND LINE ROAD
KANATA, ONTARIO.

PROJECT No. OTT-00245003-A1
DATE: JUNE 2023

PROJECT No. 004