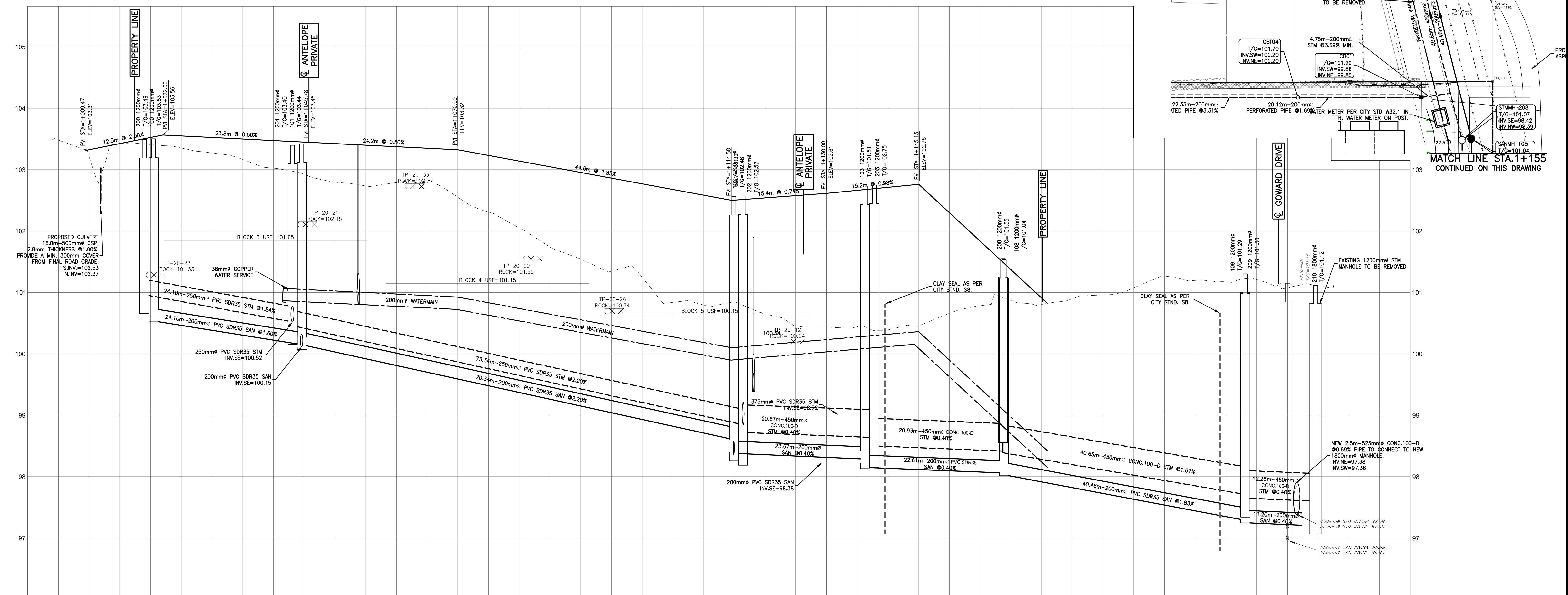
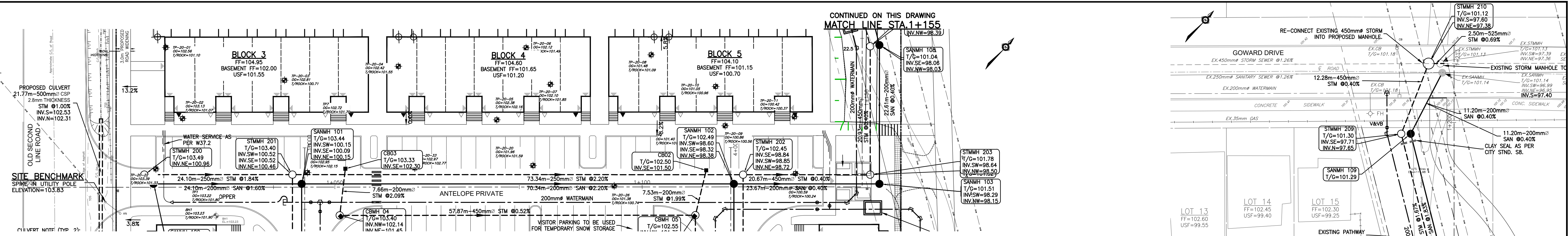


CONTINUED ON THIS DRAWING
MATCH LINE STA. 1+155



CHAINAGE	ELEVATIONS PROPOSED	TOP OF WATERMAIN ELEVATION	STORM SEWER INVERTS	SANITARY SEWER INVERTS	ELEVATION PROPOSED EXISTING	TOP OF WATERMAIN ELEVATION	STORM SEWER INVERTS	SANITARY SEWER INVERTS
1+000	103.32	101.07	21.77m-500mm ^Ø CSP STM 1.00%	100.96 NE	103.32	101.07	21.77m-500mm ^Ø CSP STM 1.00%	100.96 NE
1+019	103.42	101.05	24.10m-250mm ^Ø PVC SDR35 STM 1.84%	100.54 NE	103.42	101.05	24.10m-250mm ^Ø PVC SDR35 STM 1.84%	100.54 NE
1+020	103.52	101.04	24.10m-200mm ^Ø PVC SDR35 SAN 1.60%	100.99 SE	103.52	101.04	24.10m-200mm ^Ø PVC SDR35 SAN 1.60%	100.99 SE
1+040	103.55	101.01	73.34m-250mm ^Ø PVC SDR35 STM 2.20%	100.86	103.55	101.01	73.34m-250mm ^Ø PVC SDR35 STM 2.20%	100.86
1+050	103.52	100.97	70.34m-200mm ^Ø PVC SDR35 SAN 2.20%	100.82	103.52	100.97	70.34m-200mm ^Ø PVC SDR35 SAN 2.20%	100.82
1+075	103.47	100.92	20.67m-450mm ^Ø CONC. 100-D STM 0.40%	99.92	103.47	100.92	20.67m-450mm ^Ø CONC. 100-D STM 0.40%	99.92
1+080	103.45	100.91	20.93m-450mm ^Ø CONC. 100-D STM 1.67%	99.89	103.45	100.91	20.93m-450mm ^Ø CONC. 100-D STM 1.67%	99.89
1+085	103.42	100.90	40.65m-450mm ^Ø CONC. 100-D STM 1.67%	99.86	103.42	100.90	40.65m-450mm ^Ø CONC. 100-D STM 1.67%	99.86
1+090	103.40	100.89	40.46m-200mm ^Ø PVC SDR35 SAN 1.83%	99.83	103.40	100.89	40.46m-200mm ^Ø PVC SDR35 SAN 1.83%	99.83
1+100	103.37	100.88	12.28m-450mm ^Ø CONC. 100-D STM 0.40%	99.80	103.37	100.88	12.28m-450mm ^Ø CONC. 100-D STM 0.40%	99.80
1+105	103.35	100.87	11.20m-200mm ^Ø PVC SDR35 SAN 0.40%	99.77	103.35	100.87	11.20m-200mm ^Ø PVC SDR35 SAN 0.40%	99.77
1+110	103.32	100.86	20.67m-450mm ^Ø CONC. 100-D STM 1.67%	99.74	103.32	100.86	20.67m-450mm ^Ø CONC. 100-D STM 1.67%	99.74
1+115	103.23	100.85	40.65m-450mm ^Ø CONC. 100-D STM 1.67%	99.71	103.23	100.85	40.65m-450mm ^Ø CONC. 100-D STM 1.67%	99.71
1+120	103.14	100.84	12.28m-450mm ^Ø CONC. 100-D STM 0.40%	99.68	103.14	100.84	12.28m-450mm ^Ø CONC. 100-D STM 0.40%	99.68
1+125	103.05	100.83	11.20m-200mm ^Ø PVC SDR35 SAN 0.40%	99.65	103.05	100.83	11.20m-200mm ^Ø PVC SDR35 SAN 0.40%	99.65
1+130	102.95	100.82	20.67m-450mm ^Ø CONC. 100-D STM 1.67%	99.62	102.95	100.82	20.67m-450mm ^Ø CONC. 100-D STM 1.67%	99.62
1+135	102.86	100.81	40.65m-450mm ^Ø CONC. 100-D STM 1.67%	99.59	102.86	100.81	40.65m-450mm ^Ø CONC. 100-D STM 1.67%	99.59
1+140	102.77	100.80	12.28m-450mm ^Ø CONC. 100-D STM 0.40%	99.56	102.77	100.80	12.28m-450mm ^Ø CONC. 100-D STM 0.40%	99.56
1+145	102.69	100.79	11.20m-200mm ^Ø PVC SDR35 SAN 0.40%	99.53	102.69	100.79	11.20m-200mm ^Ø PVC SDR35 SAN 0.40%	99.53
1+150	102.59	100.78	20.67m-450mm ^Ø CONC. 100-D STM 1.67%	99.50	102.59	100.78	20.67m-450mm ^Ø CONC. 100-D STM 1.67%	99.50
1+155	102.50	100.77	40.65m-450mm ^Ø CONC. 100-D STM 1.67%	99.47	102.50	100.77	40.65m-450mm ^Ø CONC. 100-D STM 1.67%	99.47
1+160	102.41	100.76	12.28m-450mm ^Ø CONC. 100-D STM 0.40%	99.44	102.41	100.76	12.28m-450mm ^Ø CONC. 100-D STM 0.40%	99.44
1+165	102.32	100.75	11.20m-200mm ^Ø PVC SDR35 SAN 0.40%	99.41	102.32	100.75	11.20m-200mm ^Ø PVC SDR35 SAN 0.40%	99.41
1+170	102.23	100.74	20.67m-450mm ^Ø CONC. 100-D STM 1.67%	99.38	102.23	100.74	20.67m-450mm ^Ø CONC. 100-D STM 1.67%	99.38
1+175	102.14	100.73	40.65m-450mm ^Ø CONC. 100-D STM 1.67%	99.35	102.14	100.73	40.65m-450mm ^Ø CONC. 100-D STM 1.67%	99.35
1+180	102.05	100.72	12.28m-450mm ^Ø CONC. 100-D STM 0.40%	99.32	102.05	100.72	12.28m-450mm ^Ø CONC. 100-D STM 0.40%	99.32
1+185	101.95	100.71	11.20m-200mm ^Ø PVC SDR35 SAN 0.40%	99.29	101.95	100.71	11.20m-200mm ^Ø PVC SDR35 SAN 0.40%	99.29
1+190	101.86	100.70	20.67m-450mm ^Ø CONC. 100-D STM 1.67%	99.26	101.86	100.70	20.67m-450mm ^Ø CONC. 100-D STM 1.67%	99.26
1+195	101.77	100.69	40.65m-450mm ^Ø CONC. 100-D STM 1.67%	99.23	101.77	100.69	40.65m-450mm ^Ø CONC. 100-D STM 1.67%	99.23
1+200	101.68	100.68	12.28m-450mm ^Ø CONC. 100-D STM 0.40%	99.20	101.68	100.68	12.28m-450mm ^Ø CONC. 100-D STM 0.40%	99.20
1+205	101.59	100.67	11.20m-200mm ^Ø PVC SDR35 SAN 0.40%	99.17	101.59	100.67	11.20m-200mm ^Ø PVC SDR35 SAN 0.40%	99.17
1+210	101.50	100.66	20.67m-450mm ^Ø CONC. 100-D STM 1.67%	99.14	101.50	100.66	20.67m-450mm ^Ø CONC. 100-D STM 1.67%	99.14
1+215	101.41	100.65	40.65m-450mm ^Ø CONC. 100-D STM 1.67%	99.11	101.41	100.65	40.65m-450mm ^Ø CONC. 100-D STM 1.67%	99.11
1+220	101.32	100.64	12.28m-450mm ^Ø CONC. 100-D STM 0.40%	99.08	101.32	100.64	12.28m-450mm ^Ø CONC. 100-D STM 0.40%	99.08
1+225	101.23	100.63	11.20m-200mm ^Ø PVC SDR35 SAN 0.40%	99.05	101.23	100.63	11.20m-200mm ^Ø PVC SDR35 SAN 0.40%	99.05

CAUTION
THE POSITION OF ALL POLE LINES, CONDUITS, WATERMANS, SEWERS AND OTHER UNDERGROUND UTILITIES AND STRUCTURES IS NOT NECESSARILY SHOWN ON THE CONTRACT DRAWINGS, AND WHERE SHOWN, THE ACCURACY OF THE POSITION OF SUCH UTILITIES AND STRUCTURES IS NOT GUARANTEED. BEFORE STARTING WORK, DETERMINE THE EXACT LOCATION OF ALL SUCH UTILITIES AND STRUCTURES AND ASSUME ALL LIABILITY FOR DAMAGE TO THEM.

SCALE
1:300
HORIZONTAL

DESIGNED BY: B.M. THOMAS
REVIEWED BY: B.M. THOMAS
DATE: 14/06/23

THEBERGE HOMES
1600 LAPERRIERE AVENUE, SUITE 205
OTTAWA, ON. K1Z 8P5
613.421.1515

PROJECT: SECOND LINE ROAD
1158 OLD SECOND LINE ROAD
KANATA, ONTARIO.

TITLE: PROFILE ANTELOPE PRIVATE
STA. 1+000 TO STA. 1+225

PROJECT No. OTT-00245003-A1
SURVEY FSD
DATE: JUNE 2023
DRAWING No. C05