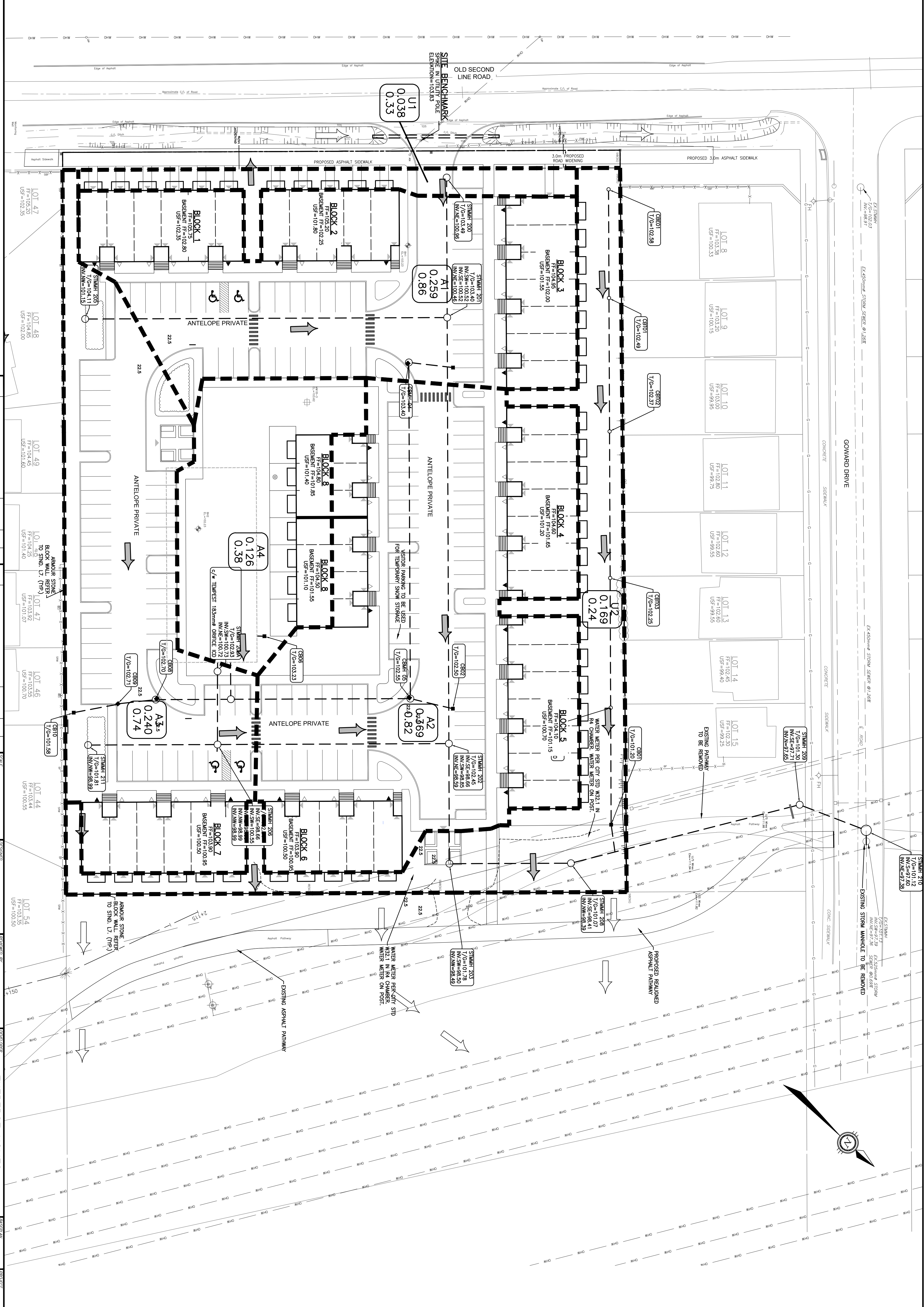


CAUTION: OF ALL POLE LINES, CONDUITS, WATERMANS, SEWERS AND OTHER UNDERGROUND AND OVERGROUND UTILITIES SHOWN HEREON. THE USER SHALL BE RESPONSIBLE FOR VERIFYING THE LOCATION AND DEPTH OF ALL SUCH UTILITIES AND BEFORE STARTING WORK, DETERMINE THE EXACT LOCATION OF ALL SUCH UTILITIES AND DAMAGE TO THEM.



REV	REVISION DESCRIPTION	DATE	BY	APP
1	ISSUED FOR APPROVAL	14/06/23	SAB	BMT

SCALE	1:300
DATE	2023-06-12

LICENCED PROFESSIONAL ENGINEER
 B. M. THOMAS
 2023-06-12
 PROFESSIONAL ENGINEER

exp.
 1600 LAPERIERE AVENUE, SUITE 205
 OTTAWA, ON, K1Z 8P5
 613.421.1515

DESIGNER	AS
PROJECT MANAGER	SAB
DATE	JUNE 2023
PROJECT TITLE	POST-DEVELOPMENT CATCHMENTS
PROJECT NO.	0245003-AN
DATE	JUNE 2023
PROJECT NO.	C09

LEGEND

- PROPERTY LINE
- ONSITE OVERLAND FLOW ROUTE
- EXTERNAL OVERLAND FLOW ROUTE
- AREA NO. 11
- AREA NO. 020
- RUNOFF COEFFICIENT
- CATCHMENT AREA

KEY PLAN

The key plan shows the site's location within a larger neighborhood context. It identifies Old Second Line Road, March Road, and the Ottawa River. The site location is marked with a black dot and labeled 'SITE LOCATION'. Other nearby streets like 'ROBERT ROAD' and 'L' are also shown.