

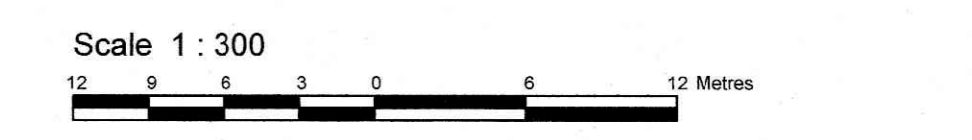
Notes & Legend

Denotes	
□	Survey Monument Planted
■	Survey Monument Found
SIB	Standard Iron Bar
SSIB	Short Standard Iron Bar
IB	Iron Bar
CC	Cut Cross
CP	Concrete Pin
IB*	Round Iron Bar
SBW	Spike & Washer
SSIB*	Short Standard Iron Bar
IB*	Iron Bar
(WIT)	Witness
Meas.	Measured
(AOG)	Annis, O'Sullivan, Vollebek Ltd.
(P1)	Plan SR-12696
(P2)	(857) Plan, dated July 14, 2000 (Ref. 16a-49GR)
○	Deciduous Tree
★	Coniferous Tree
○	Shrub
○ FH	Fire Hydrant
○ M-H	Maintenance Hole (Sanitary)
○ M-H T	Maintenance Hole (Traffic)
○ M-H H	Maintenance Hole (Hydro)
○ M-H	Maintenance Hole (Unidentified)
○ VC	Valve Chamber (Watermain)
○ W	Water Valve
○ HW	Overhead Wires
□	Catch Basin
○ M-W	Monitoring Well
○ GM	Gas Meter
○ S	Bollard
△ S	Sign
○ PM	Parking Meter
HR	Handrail
MF	Metal Fence
CLF	Chain Link Fence
BF	Board Fence
TW	Top Wire
MW	Middle Wire
BW	Bottom Wire
BP	Brick Pillar with Light
Elev	Elevation
T/G	Top of Grate
EOA	Edge of Asphalt
CRW	Concrete Retaining Wall
SRW	Stone Retaining Wall
Gate	Gate
○ LP	Utility Pole
○ AN	Anchor
○ LS	Light Standard
○ FP	Flag Pole
○	Diameter
○	Location of Elevations
○	Top of Concrete Curb Elevation
○	Centreline
Top of Wall	Top of Wall
Property Line	Property Line

TOPOGRAPHICAL PLAN OF SURVEY OF

LOTS 2, 4, 6, 8, 10, 12, 14, 16, 32, 33, 34, 35 AND PART OF LOT 1 REGISTERED PLAN 49 AND LOTS 14, 15, 16 AND PART OF LOTS 1, 2, 3, 4, AND 5 REGISTERED PLAN 51 AND PART OF LOT 7 JUNCTION GORE GEOGRAPHIC TOWNSHIP OF GLOUCESTER CITY OF OTTAWA

Prepared by Annis, O'Sullivan, Vollebek Ltd.
Field Work Completed March 6, 2020.



Metric
DISTANCES SHOWN ON THIS PLAN ARE IN METRES AND CAN BE CONVERTED TO FEET BY DIVIDING BY 0.3048

Surveyor's Certificate

- I CERTIFY THAT:
- This survey and plan are correct and in accordance with the Surveys Act, the Surveyors Act and the Land Titles Act and the regulations made under them.
 - The survey was completed on the 6th day of March, 2020.

Date: 6/03/20
V. Andrew Sheip
Ontario Land Surveyor

Bearing Note

Bearings are grid, derived from the northern limit of Selkirk Street having a bearing of N83°27'50"E as shown on a Plan by (857) dated July 14, 2000 and are referenced to the Central Meridian of MTM Zone 9 (76°30' West Longitude) NAD-83 (original).

ELEVATION NOTES

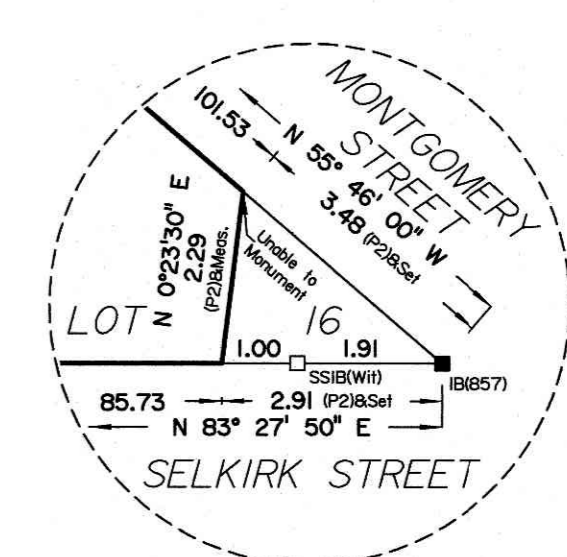
- Elevations shown are geodetic and are referred to the CGVD28 geodetic datum, derived from City of Ottawa benchmark No. 3465 having an elevation of 62.831 metres.
- It is the responsibility of the user of this information to verify that the job benchmark has not been altered or disturbed and that its relative elevation and description agrees with the information shown on this drawing.

UTILITY NOTES

- This drawing cannot be accepted as acknowledging all of the utilities and it will be the responsibility of the user to contact the respective utility authorities for confirmation.
- Only visible surface utilities were located.
- A field location of underground plant by the pertinent utility authority is mandatory before any work involving breaking ground, probing, excavating etc.

SITE AREA = 16931.9 m²

Topographic data was collected under Winter Conditions. Snow cover and ice preclude determining location and elevation of some topographical data that is otherwise visible.



Detail
Scale 1:100

ASSOCIATION OF ONTARIO LAND SURVEYORS
PLAN SUBMISSION FORM
2121743

THIS PLAN IS NOT VALID UNLESS IT IS AN EMBOSSSED ORIGINAL COPY ISSUED BY THE SURVEYOR in accordance with Regulation 1029, Section 29 (3).