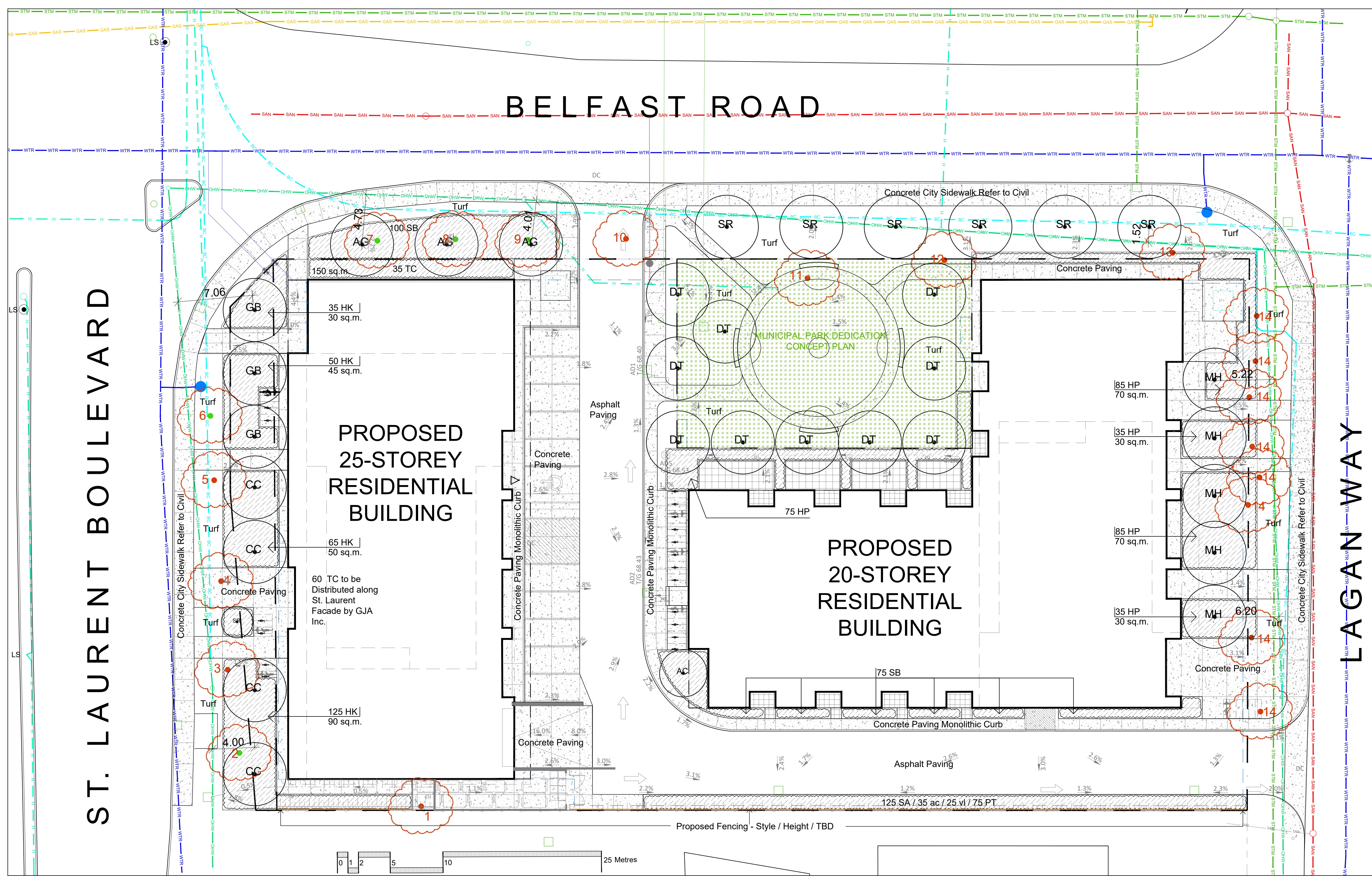


Drawing Remains the Property of/Copyright Reserved by GJA INC. Do Not Use or Reproduce Without Approval of GJA INC. NOT To Be Used For Construction Unless Indicated by Revision: **FOR LANDSCAPE CONSTRUCTION**. Contractor is Responsible for Verification of Site Locations of all Utilities. Report any Discrepancies Between Site and Drawing Immediately to GJA INC. Do NOT Proceed Until Clarified.



REFER TO TCR BY IFS

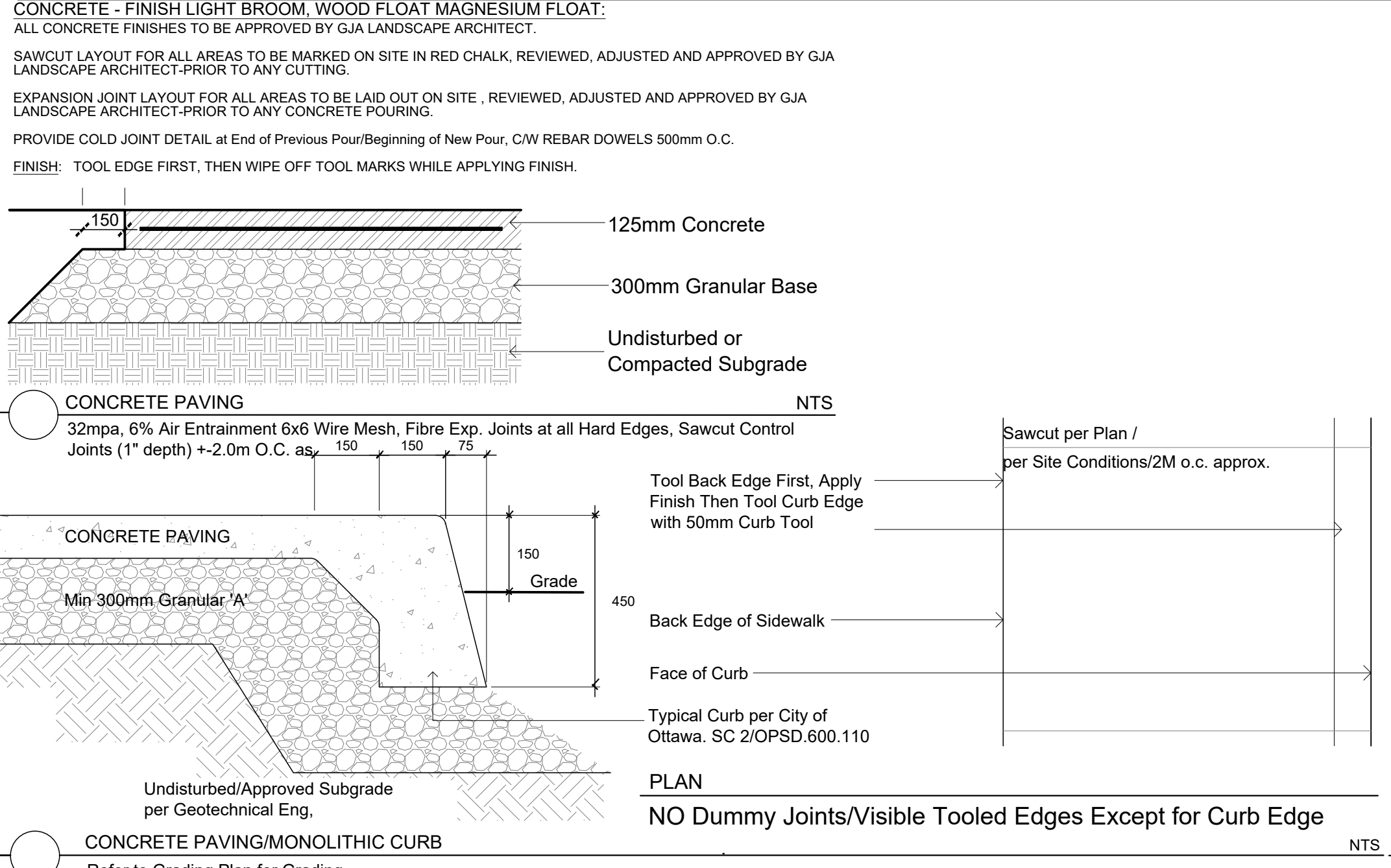
- Existing Trees - Refer to TCR by IFS for Details/Actions
- Existing Trees - Refer to TCR by IFS for Details/Actions

LANDSCAPE PLAN

- Proposed Deciduous Tree
- Shrub Planting Bed
- Concrete Monolithic Curb
- Concrete
- Patio Slabs
- Parking Garage
- Fence
- Bike Rack Anchor to Concrete
- Fire Hydrant
- FD Siamese Connection
- Light Standard
- Seat Wall
- Municipal Park Dedication

BELOW/ABOVE GRADE SERVICES REFER TO CIVIL/CUP

- U/G Water Service
- U/G Storm Service
- U/G Sanitary Service
- U/G Gas Service
- U/G TelCo Service
- U/G Hydro Service
- O/H Hydro Service



TREES 1531 ST LAURENT KATASA +

Code	Qty	Botanical Name	Common Name	Size	Condition
AC	3	Aesculus glabra	Ohio Buckeye	60mm cal	B + B specimen
CC	4	Carpinus caroliniana	Hornbeam Bluebeech	60mm cal	B + B specimen
GB	3	Quercus bicolor	Whiteoak Tree	70mm cal	B + B specimen
MH	5	Malus 'Harvest Gold'	Harvest Gold Crabapple	60mm cal	B + B specimen
SR	7	Syringa reticulata	Japanese Tree Lilac	80mm cal	B + B specimen
DT	10	Deciduous Tree TBD by Park Planner			

SHRUBS 1531 ST LAURENT KATASA +

Code	Qty	Botanical Name	Common Name	Size	Condition
ac	35	Amelanchier canadensis	Serviceberry	9cm Pot	Pot
HK	275	Hypericum salicarpium	Kalm St. John's Wort	9cm Pot	Pot
HP	315	Hypericum prostratum	Shrubby St. John's Wort	9cm Pot	Pot
SA	125	Spiraea alba	Meadowweet	9cm Pot	Pot
SB	175	Spiraea bumalda 'Dart's Red'	Dart's Red Spirea	9cm Pot	Pot
vt	25	Viburnum lentago	Nannyberry	9cm Pot	Pot
TC	95	Taxus cuspidata 'Nana'	Dwarf Japanese Yew	9cm Pot	Pot

OTHER 1531 ST LAURENT KATASA +

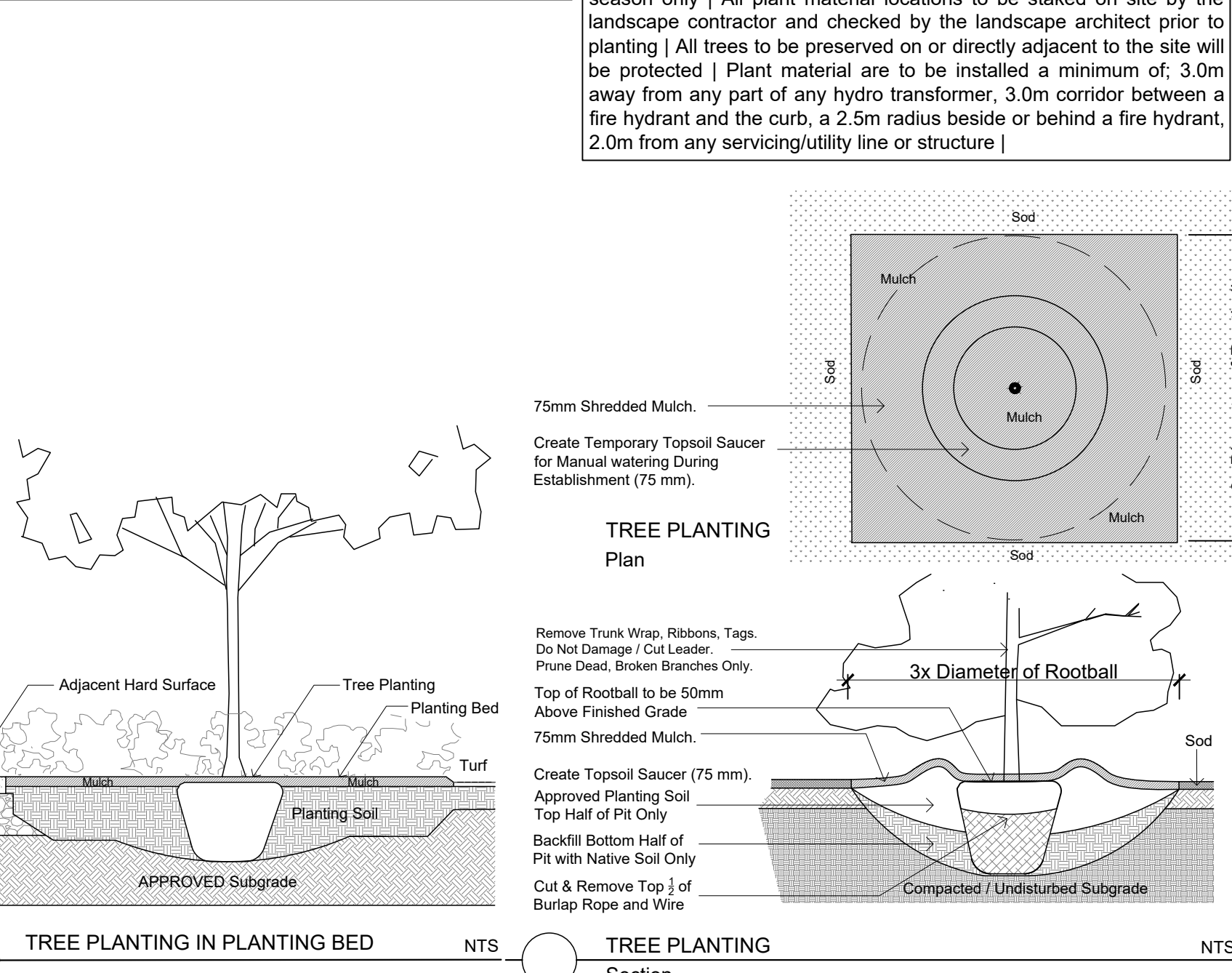
Code	Qty	Botanical Name	Common Name	Condition
75	Arctostaphylos uva-ursi	Bearberry	9cm Pot	Pot
125	Geranium macrorrhizum	Bigroot Geranium	9cm Pot	Pot
125	Geranium pilosystem 'Glowat'	Rosanne Geranium	9cm Pot	Pot
75	Parthenocissus tricuspidata	Boston Ivy	9cm Pot	Pot
75	Panicum virgatum	Switch Grass	9cm Pot	Pot

PLANTING ON INSULATED GARAGE ROOF
Ensure Filter Fabric is in Place over Insulation, with 500mm Overlap at Seams, and Continuous up and over any Upstands, Drains etc. Notify GJA INC. When Fabric Placement is Ready For Inspection Prior to ANY Soil Placement.

PLANTING BED
75mm Shredded Pine Mulch
MINIMUM 350mm Planting Soil and Continuous Down To Top of Filter Cloth
Filter Fabric/Geotextile
Insulation as per RT, by ARCHITECT
Drainage Board as per RT, by ARCHITECT
Waterproofing/Protection as per RT, by ARCHITECT

SHRUB PLANTING
PRUNE DAMAGED BRANCHES
75mm SHREDDED PINE BARK MULCH
FINISH GRADE PLANT AT SAME GRADE AS GROWN
LOOSEN POT BOUND ROOTS
PLANTING SOIL MIX
SCARIFY BOTTOM OF PIT 50MM DEPTH

TREE PLANTING IN PLANTING BED
Remove Trunk Wrap, Ribbons, Tags. Do Not Damage / Cut Leader. Prune Dead, Broken Branches Only. Top of Rootball to be 50mm Above Finished Grade. 75mm Shredded Mulch. Create Topsoil Saucer (75 mm). Approved Planting Soil. Top Half of Pit Only. Backfill Bottom Half of Pit with Native Soil Only. Cut & Remove Top of Burlap Rope and Wire.



1	SPC SUBMISSION 1	MAY 31 2023
0	REVIEW/COORDINATION	MAY 2023
#	REVISION	DATE

PROPERTY OWNER
KATASA Group
Katasa Groupe + Développement 301-69 Jean-Proulx
Gatineau, Quebec J8Z 1W2 Canada

Project
MIXED-USE RESIDENTIAL BUILDINGS
1531 ST. LAURENT BLVD, OTTAWA, ON
K1G 1A1

Scale:
1:200

LANDSCAPE PLAN
L1