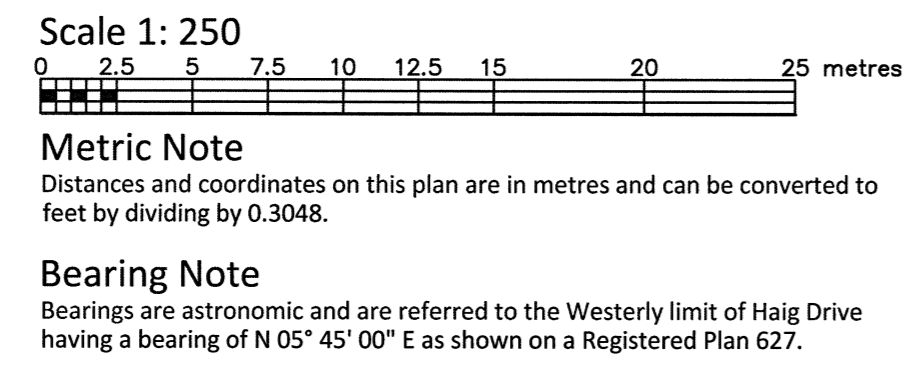


TOPOGRAPHIC PLAN OF SURVEY OF

PART OF LOTS 53, 54, 55, 56, 57, 58, 59, 60, 61, 62, 63, 66, 67, 79, 80, 92, 93, 105 & 106 PART OF HASTINGS AVENUE, PART OF SHAFTSBURY STREET & PART OF EAST STREET (As Closed by Judge's Order OT24350, OT24067 & OT24976) REGISTERED PLAN 370 CITY OF OTTAWA FARLEY, SMITH & DENIS SURVEYING LTD. 2020

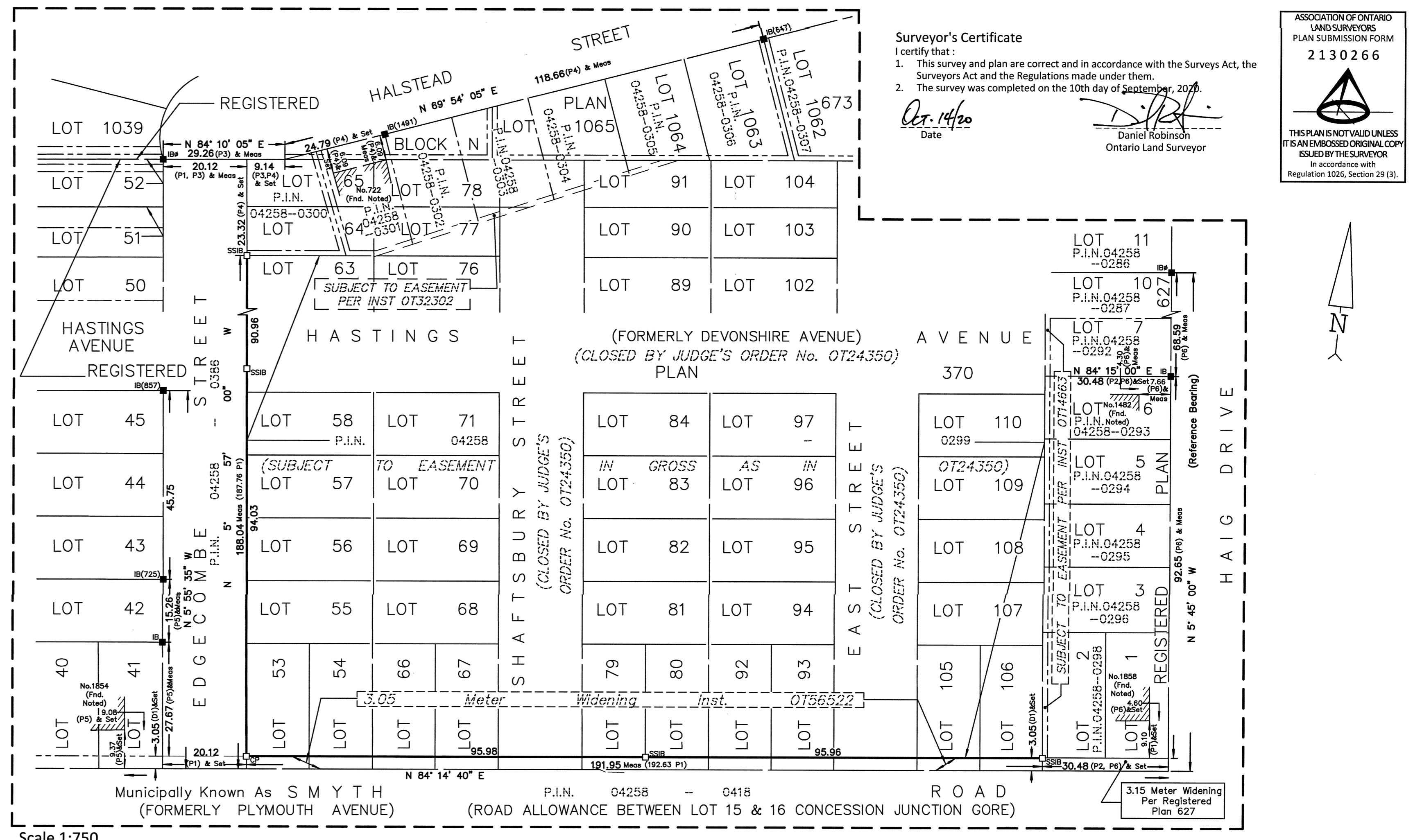


Bearing Note: Bearings are astronomic and are referred to the Westerly limit of Haig Drive having a bearing of N 05° 45' 00" E as shown on a Registered Plan 627.

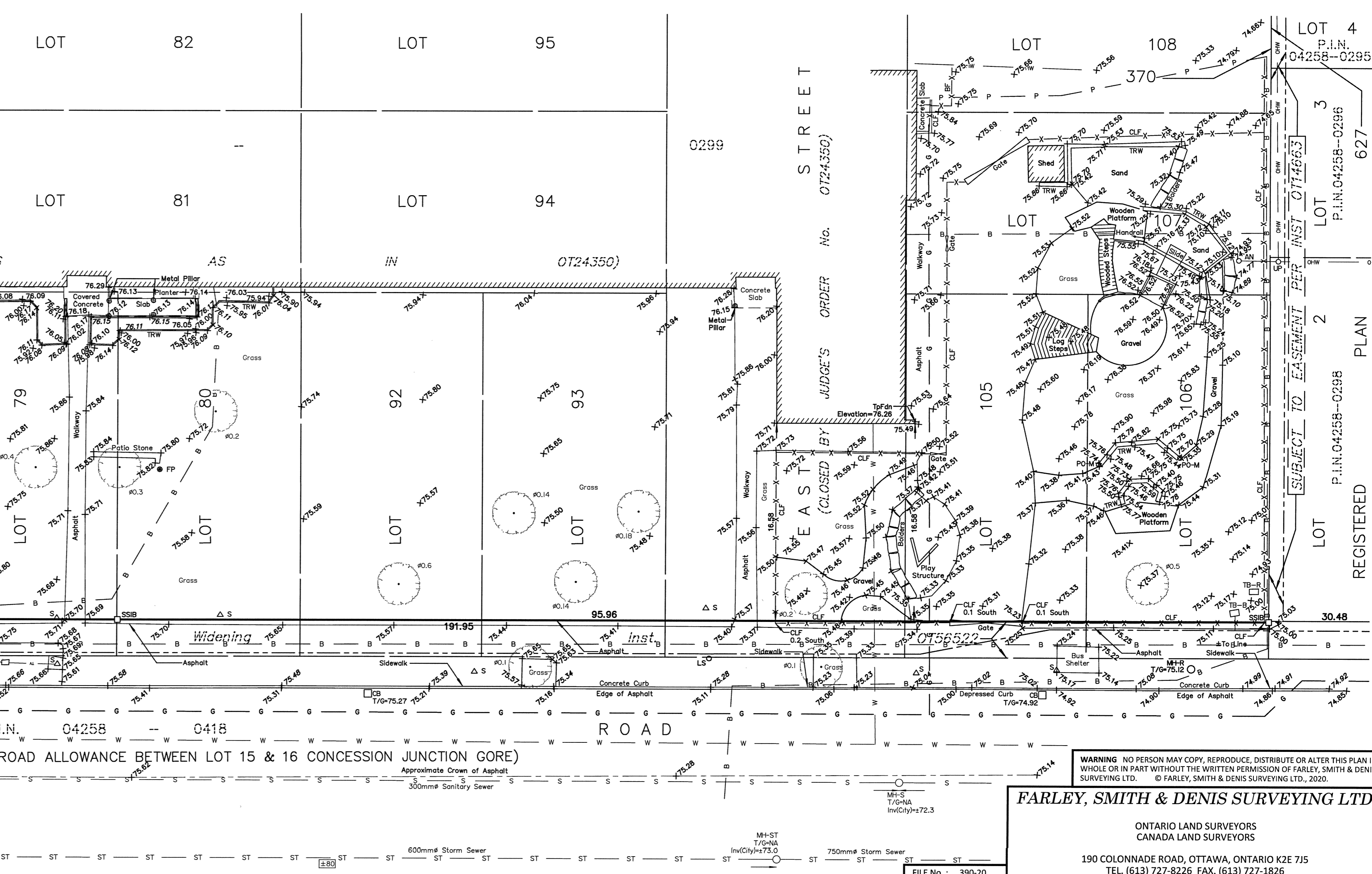
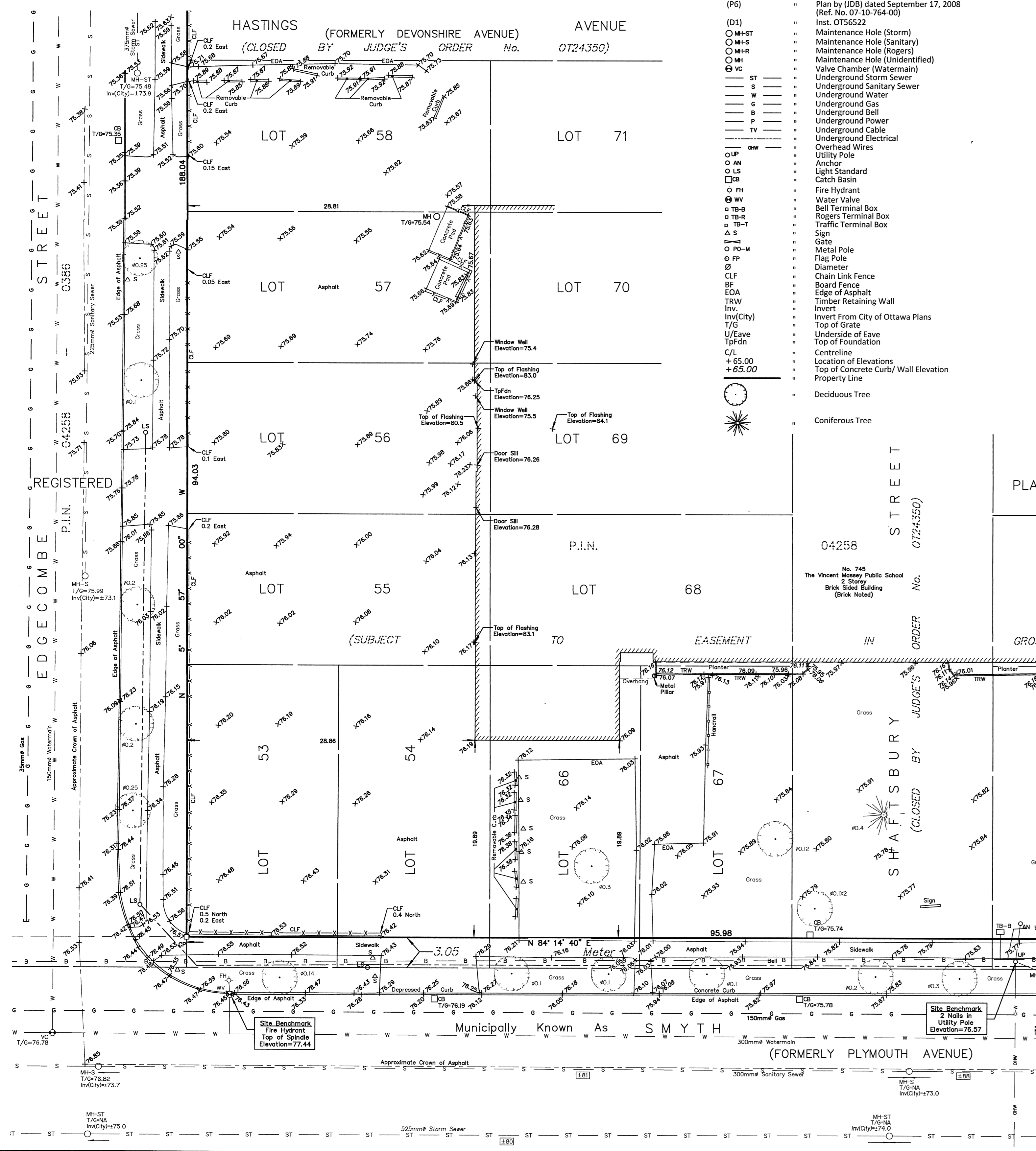
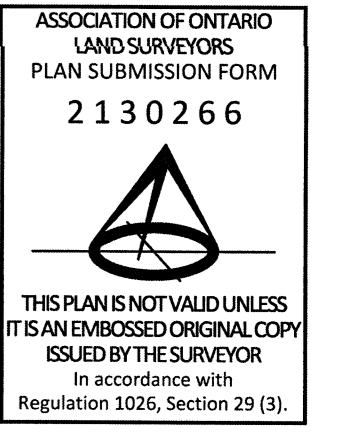
Elevation Notes: Elevations shown are geodetic and are referred to Geodetic Datum CGVD-1928-1978. It is the responsibility of the user of this information to verify that the job benchmark has not been altered or disturbed and that its relative elevation and description agrees with the information shown on this drawing.

- Utility Notes: 1. This drawing cannot be accepted as acknowledging all of the utilities and it will be the responsibility of the user to contact the respective utility authorities for confirmation. 2. Only visible surface utilities were located. 3. Underground utility data compiled from City of Ottawa utility sheet reference: I-18-10, I-18-11, J-18-15, J-19-01, D14c, 304p&p1, 304p&p3, 5916p&p2, 6067p&p02. 4. Sanitary and storm sewer grades and inverts were compiled from: City of Ottawa underground plans. 5. A field location of underground plant by the pertinent utility authority is mandatory before any work involving breaking ground, probing, excavating etc.

Notes & Legend table with symbols for Survey Monument, Registered Plan, Utility types (Storm Sewer, Sanitary Sewer, Water, Gas, Electric, etc.), and other features like Fire Hydrant, Flag Pole, etc.



Surveyor's Certificate: I certify that: 1. This survey and plan are correct and in accordance with the Surveys Act, the Surveys Act and the Regulations made under them. 2. The survey was completed on the 10th day of September, 2020. Date: 09.14.20 Daniel Robinson Ontario Land Surveyor



WARNING: NO PERSON MAY COPY, REPRODUCE, DISTRIBUTE OR ALTER THIS PLAN IN WHOLE OR IN PART WITHOUT THE WRITTEN PERMISSION OF FARLEY, SMITH & DENIS SURVEYING LTD. FARLEY, SMITH & DENIS SURVEYING LTD. 190 COLONNADE ROAD, OTTAWA, ONTARIO K2E 7J5 TEL: (613) 727-8226 FAX: (613) 727-1826 FILE No.: 390-20