

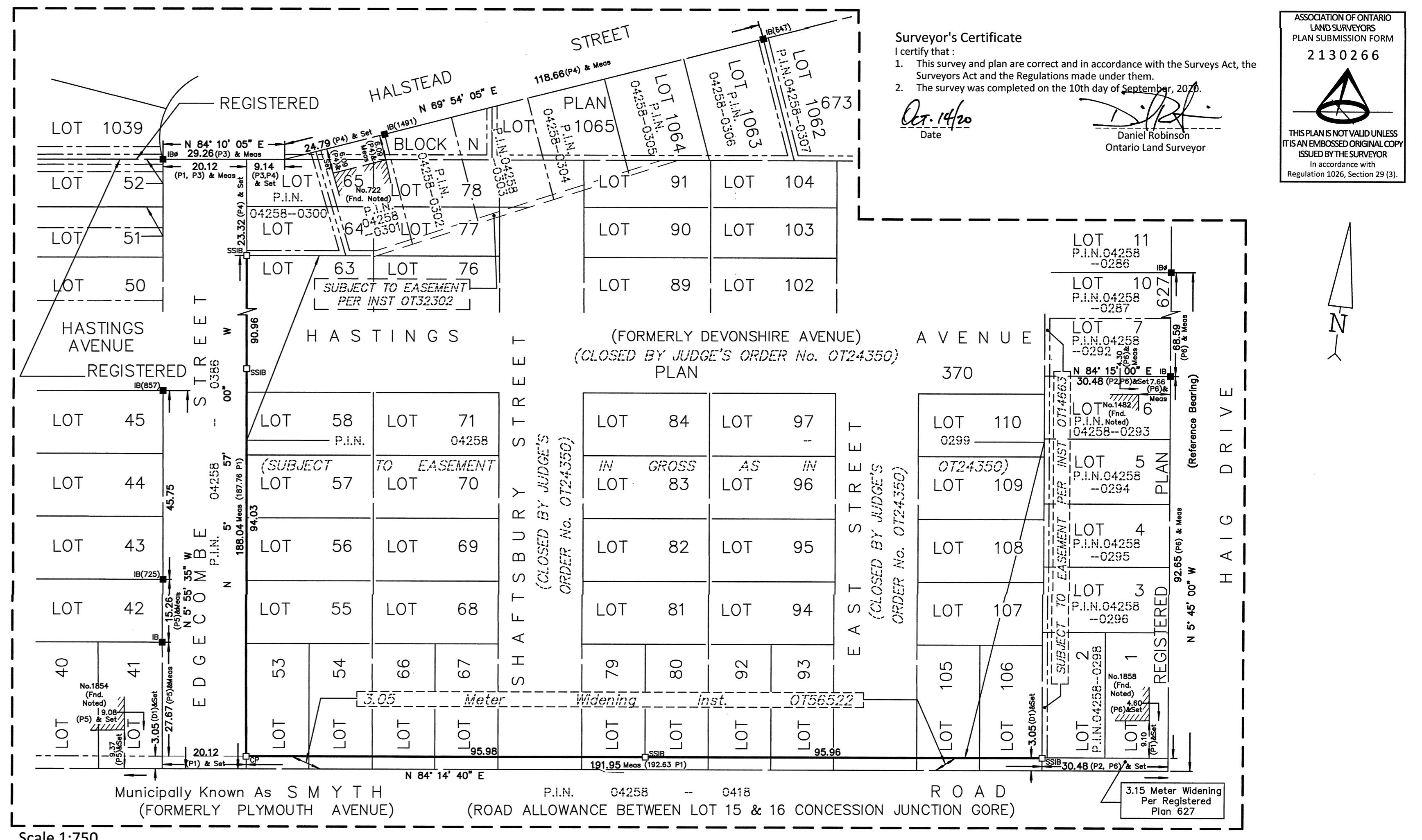
TOPOGRAPHIC PLAN OF SURVEY OF

PART OF LOTS 53, 54, 55, 56, 57, 58, 59, 60, 61, 62, 63, 66, 67, 79, 80, 92, 93, 105 & 106 PART OF HASTINGS AVENUE, PART OF SHAFTSBURY STREET & PART OF EAST STREET (As Closed by Judge's Order OT24350, OT24067 & OT24976) REGISTERED PLAN 370 CITY OF OTTAWA FARLEY, SMITH & DENIS SURVEYING LTD. 2020

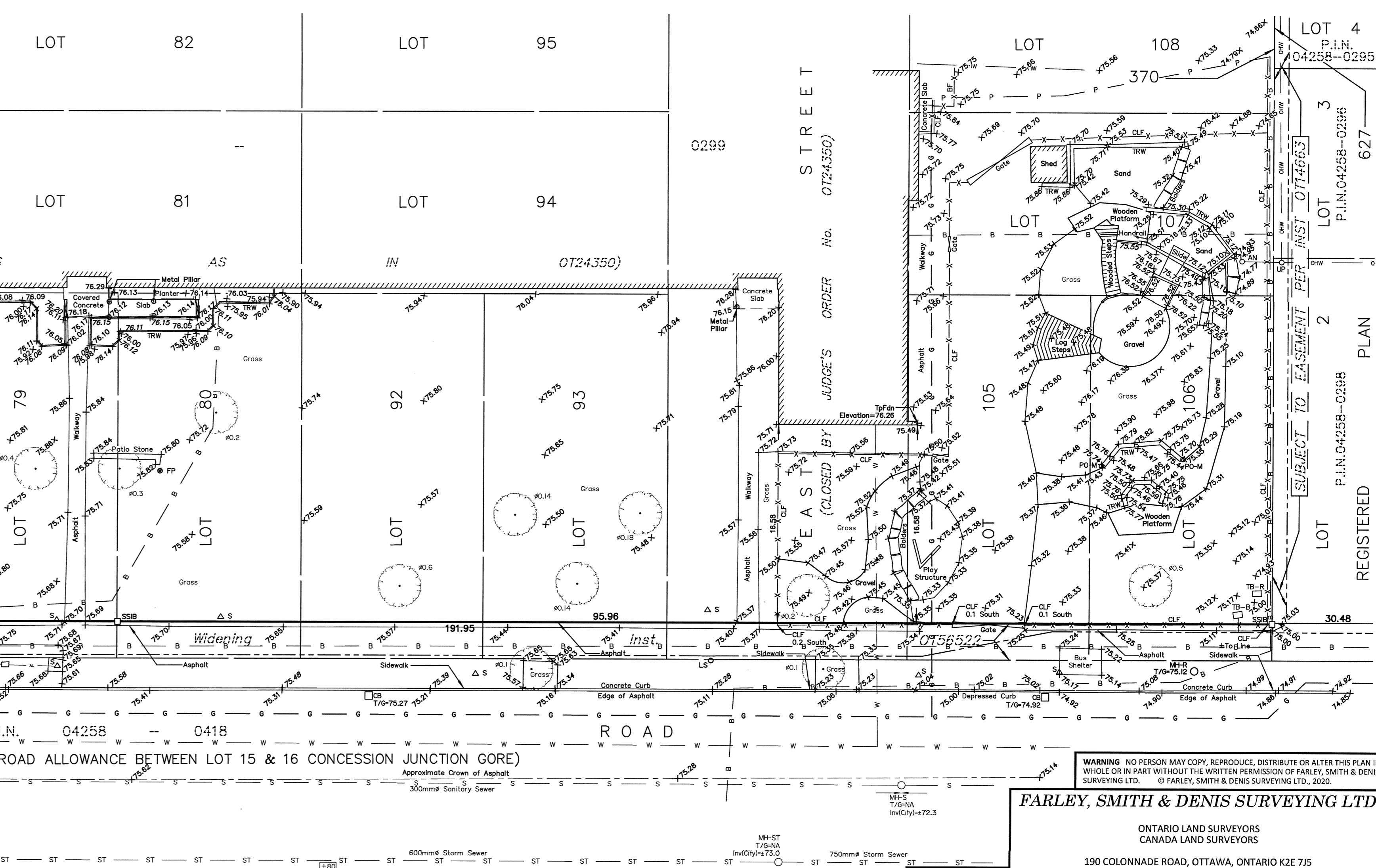
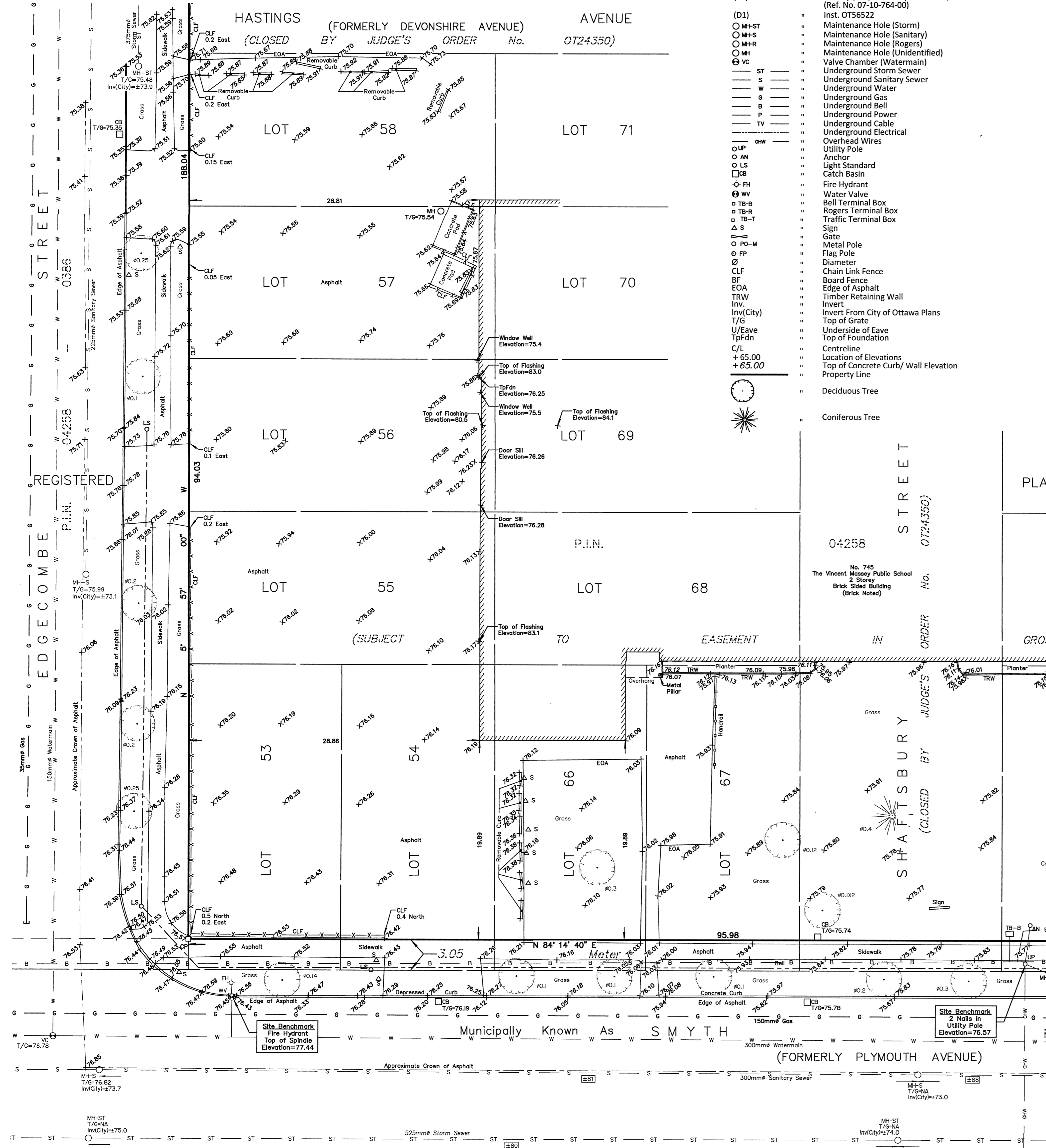
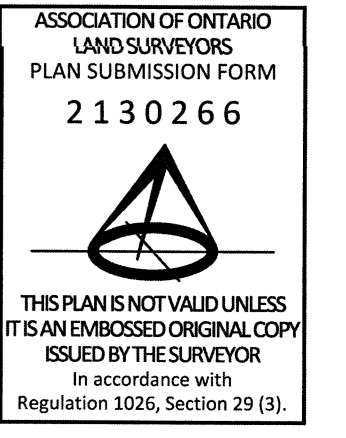
Scale 1: 250 Metric Note Distances and coordinates on this plan are in metres and can be converted to feet by dividing by 0.3048. Bearing Note Bearings are astronomic and are referred to the Westerly limit of Haig Drive having a bearing of N 05° 45' 00" E as shown on a Registered Plan 627. Elevation Notes Elevations shown are geodetic and are referred to Geodetic Datum CGVD-1928-1978. It is the responsibility of the user of this information to verify that the job benchmark has not been altered or disturbed and that its relative elevation and description agrees with the information shown on this drawing.

Utility Notes 1. This drawing cannot be accepted as acknowledging all of the utilities and it will be the responsibility of the user to contact the respective utility authorities for confirmation. 2. Only visible surface utilities were located. 3. Underground utility data compiled from City of Ottawa utility sheet reference: I-18-10, I-18-11, J-18-15, J-19-01, D14c, 304p&p1, 304p&p3, 5916p&p2, 6067p&p02. 4. Sanitary and storm sewer grades and inverts were compiled from: City of Ottawa underground plans. 5. A field location of underground plant by the pertinent utility authority is mandatory before any work involving breaking ground, probing, excavating etc.

Notes & Legend Denotes Survey Monument Found, Survey Monument Planted, Standard Iron Bar, Short Standard Iron Bar, Iron Bar, Round Iron Bar, Measured, Registered Plan 370, Registered Plan 627, Registered Plan 673, Plan by (L491) dated November 26, 1986, Plan 4R-8665, Plan by (JDB) dated September 17, 2008 (Ref. No. 07-10-764-00), Inst. 0756522, Maintenance Hole (Storm), Maintenance Hole (Sanitary), Maintenance Hole (Rogers), Maintenance Hole (Unidentified), Valve Chamber (Watermain), Underground Storm Sewer, Underground Sanitary Sewer, Underground Water, Underground Gas, Underground Bell, Underground Power, Underground Cable, Underground Electrical, Overhead Wires, Utility Pole, Anchor, Light Standard, Catch Basin, Fire Hydrant, Water Valve, Bell Terminal Box, Rogers Terminal Box, Traffic Terminal Box, Sign, Gate, Metal Pole, Flag Pole, Diameter, Chain Link Fence, Board Fence, Edge of Asphalt, Timber Retaining Wall, Invert, Invert From City of Ottawa Plans, Top of Foundation, Underside of Eave, Top of Foundation, Centreline, Location of Elevations, Top of Concrete Curb/Wall Elevation Property Line, Deciduous Tree, Coniferous Tree.



Surveyor's Certificate I certify that: 1. This survey and plan are correct and in accordance with the Surveys Act, the Surveys Act and the Regulations made under them. 2. The survey was completed on the 10th day of September, 2020. Date: 09.14.20 Daniel Robinson Ontario Land Surveyor



FARLEY, SMITH & DENIS SURVEYING LTD. ONTARIO LAND SURVEYORS CANADA LAND SURVEYORS 190 COLONNADE ROAD, OTTAWA, ONTARIO K2E 7J5 TEL. (613) 727-8226 FAX. (613) 727-1826 FILE No.: 390-20