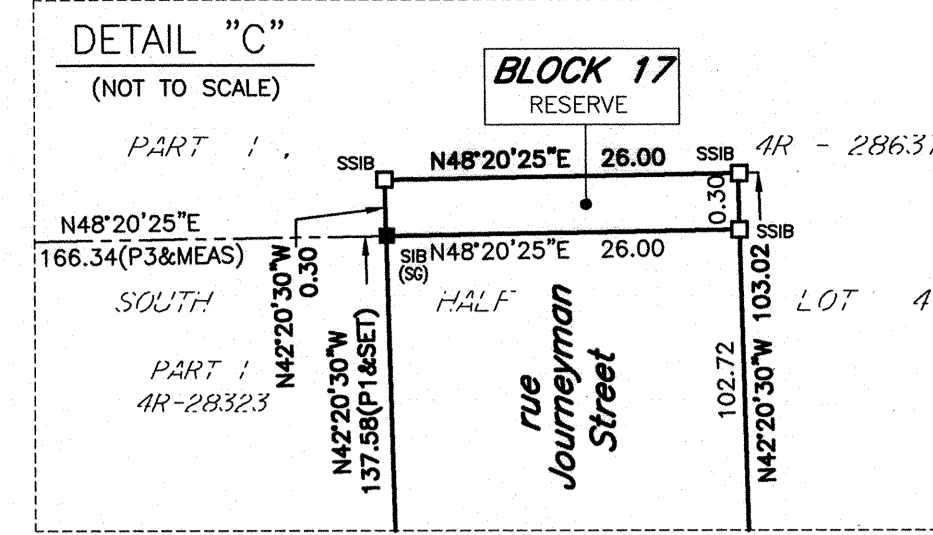
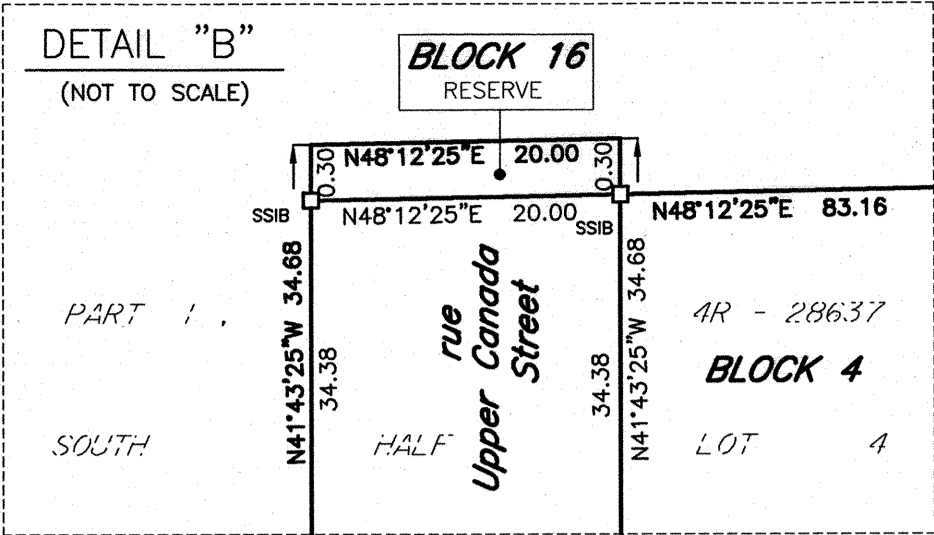
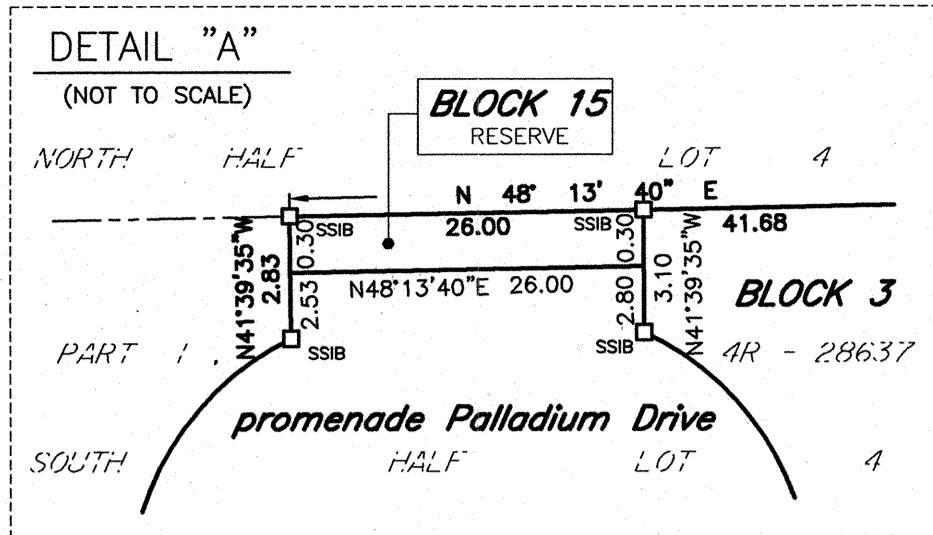


18 MAY 2016 11:16 AM



APPROVED UNDER SECTION 51 OF THE PLANNING ACT BY THE CITY OF OTTAWA THIS 30 DAY OF MAY, 2016

PLAN 4M-1566
I CERTIFY THAT THIS PLAN IS REGISTERED IN THE LAND REGISTRY OFFICE FOR THE LAND TITLES DIVISION OF OTTAWA-CARLETON No.4 AT 13:59 O'CLOCK ON THE 7 DAY OF June, 2016 AND ENTERED IN THE REGISTER FOR PROPERTY IDENTIFIER 04508-0123 and 04508-0125 AND THE REQUIRED CONSENTS ARE REGISTERED AS PLAN DOCUMENT NO. 01793704

MICHAEL MIZZI, MCIP, RPP, ACTING GENERAL MANAGER PLANNING AND GROWTH MANAGEMENT DEPARTMENT PLANNING AND INFRASTRUCTURE PORTFOLIO CITY OF OTTAWA

THIS PLAN COMPRISES THE LAND IDENTIFIED BY PART OF PINS 04508-0123 AND 04508-0125.

PLAN OF SUBDIVISION OF PART OF LOTS 3 AND 4 CONCESSION 1

GEOGRAPHIC TOWNSHIP OF HUNTLEY CITY OF OTTAWA Scale 1:2000

METRIC CONVERSION DISTANCES AND COORDINATES SHOWN ON THIS PLAN ARE IN METRES AND CAN BE CONVERTED TO FEET BY DIVIDING BY 0.3048

GRID SCALE CONVERSION DISTANCES ARE GROUND AND CAN BE CONVERTED TO GRID BY MULTIPLYING BY THE COMBINED SCALE FACTOR OF 0.99995.

BEARING NOTE BEARINGS HEREON ARE GRID BEARINGS DERIVED FROM THE CAN-NET VRS NETWORK AND ARE REFERRED TO THE CENTRAL MERIDIAN 76° 30' WEST LONGITUDE OF THE 3rd MTM ONTARIO COORDINATE SYSTEM, NAD83 (ORIGINAL) ZONE 9.

OBSERVED REFERENCE POINTS DERIVED FROM GPS OBSERVATIONS USING THE CAN-NET VIRTUAL REFERENCE STATION NETWORK: MTM ZONE 9, NAD83 (ORIGINAL), COORDINATES TO URBAN ACCURACY PER SEC 14(2) OF OREG. 216/10

Table with columns: ORP ID, NORTHING, EASTING. Rows include ORP 1, 2, 3 with coordinates.

LEGEND table listing symbols for DENOTES, FOUND MONUMENTS (STANTEC), and various types of monuments and markers.

OWNER'S CERTIFICATE

THIS IS TO CERTIFY THAT: 1. BLOCKS 1, 2, 5 TO 14 INCLUSIVE, THE STREETS, NAMELY PART OF promenade Campeau Drive, PART OF promenade Palladium Drive AND COUR NIPISING COURT HAVE BEEN LAID OUT IN ACCORDANCE WITH OUR INSTRUCTIONS.

DATED: May 16, 2016 DATED: May 18, 2016 KEVIN MCGARRAN VICE PRESIDENT WEST OTTAWA LAND HOLDINGS INC. JEFF PARKES VICE PRESIDENT WEST OTTAWA LAND HOLDINGS INC.

OWNER'S CERTIFICATE

THIS IS TO CERTIFY THAT: 1. BLOCKS 3 AND 4, THE STREETS, NAMELY PART OF promenade Campeau Drive, PART OF promenade Palladium Drive, rue Upper Canada Street AND rue Journeymen Street AND RESERVES NAMELY BLOCKS 15, 16 AND 17 HAVE BEEN LAID OUT IN ACCORDANCE WITH OUR INSTRUCTIONS.

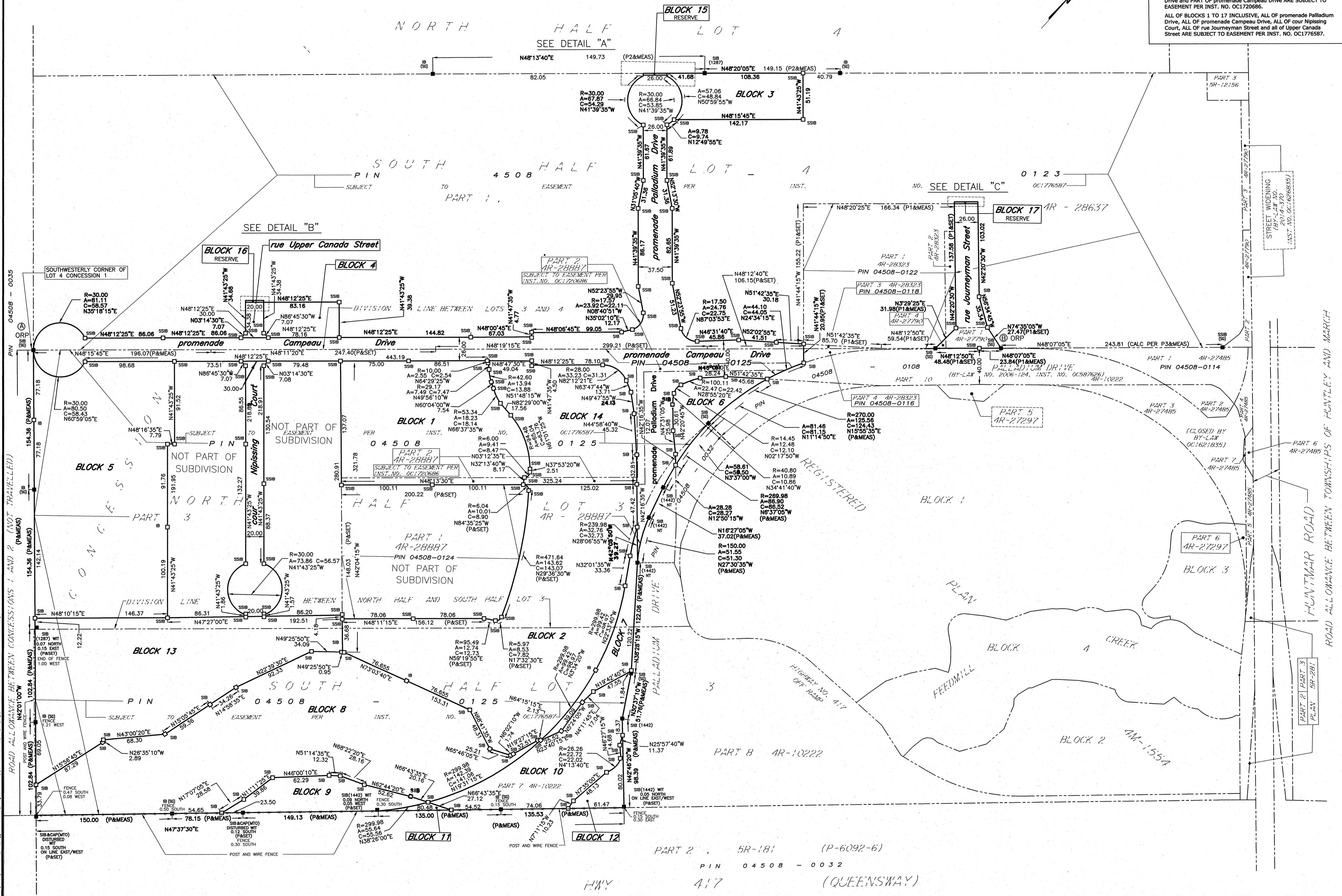
DATED: May 16, 2016 DATED: May 18, 2016 KEVIN MCGARRAN VICE PRESIDENT WEST OTTAWA LAND HOLDINGS INC. JEFF PARKES VICE PRESIDENT WEST OTTAWA LAND HOLDINGS INC.

SURVEYOR'S CERTIFICATE

I CERTIFY THAT: 1. THIS SURVEY AND PLAN ARE CORRECT AND IN ACCORDANCE WITH THE SURVEYS ACT, THE SURVEYS ACT AND THE LAND TITLES ACT AND THE REGULATIONS MADE UNDER THEM. 2. THE SURVEY WAS COMPLETED ON THE 3rd DAY OF MAY, 2016.

May 18/16 DATE BRIAN J. WEBSTER ONTARIO LAND SURVEYOR

Stantec Geomatics Ltd. CANADA AND ONTARIO LAND SURVEYORS 1331 CLYDE AVENUE, SUITE 400 OTTAWA, ONTARIO, K2C 3G4 TEL: (613) 722-4420 FAX: (613) 722-2799



PART 2, 5R-181 (P-6092-6) PIN 04508-0032 HWY 417 (QUEENSWAY)