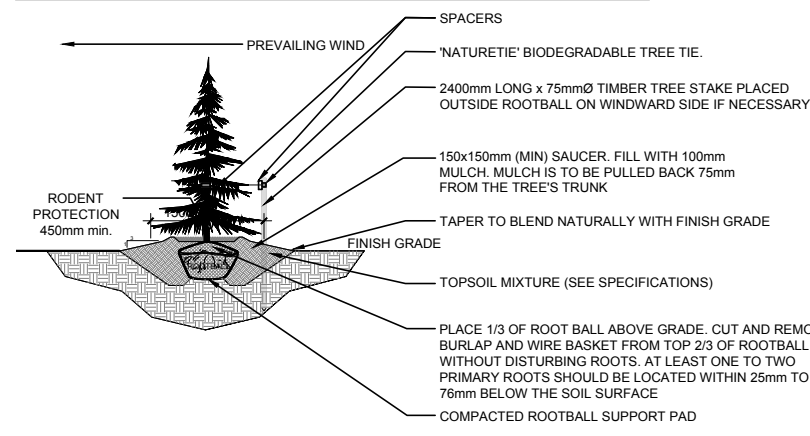


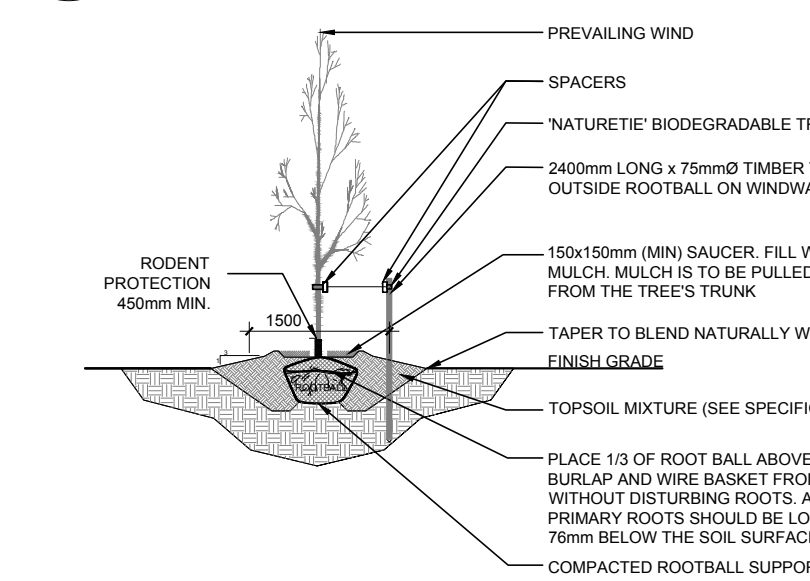
**40 YEAR CANOPY CALCULATION:**

- 17,794 m<sup>2</sup> site area
- (39) large trees proposed (154m<sup>2</sup> ea.)
- (28) medium trees proposed / transplanted (79m<sup>2</sup> ea.)
- (5) small trees proposed / transplanted (7m<sup>2</sup> ea.)
- (1) large coniferous tree proposed (79m<sup>2</sup> ea.)
- =8,332m<sup>2</sup> canopy cover =46.8% canopy cover
- \*Large trees calculated at 14m, medium & coniferous at 10m and small at 3m.



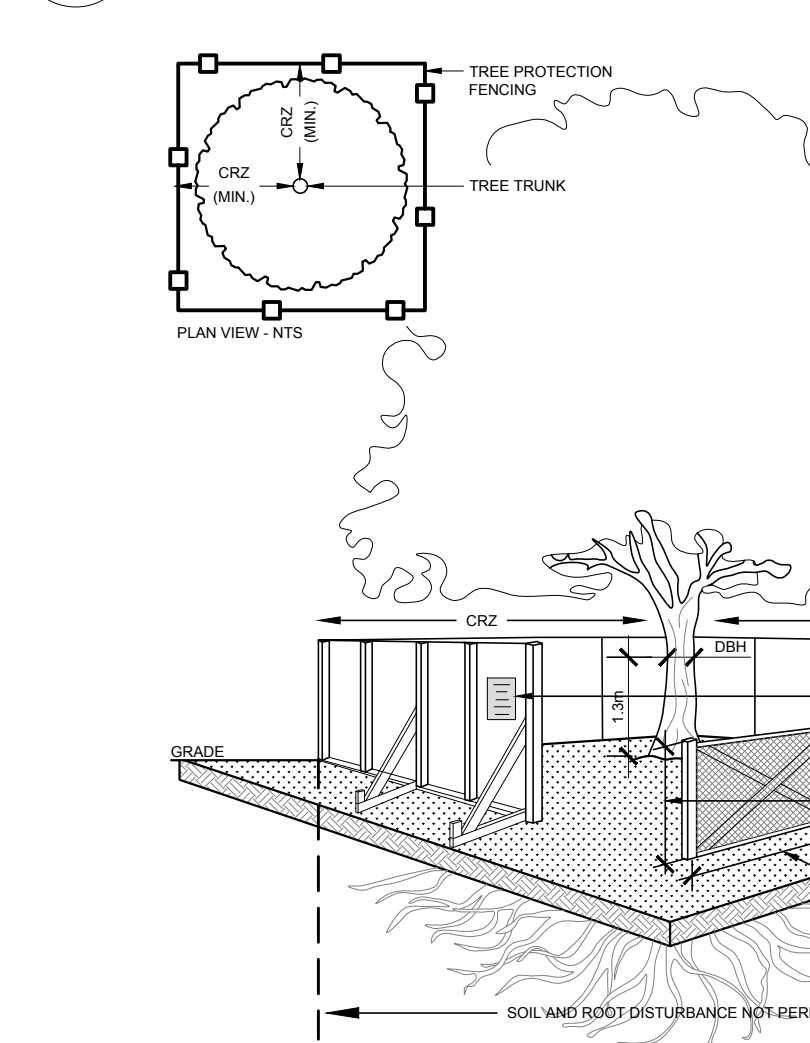
**2 CONIFEROUS TREE PLANTING**

L1 SCALE NTS



**3 DECIDUOUS TREE PLANTING**

L1 SCALE NTS

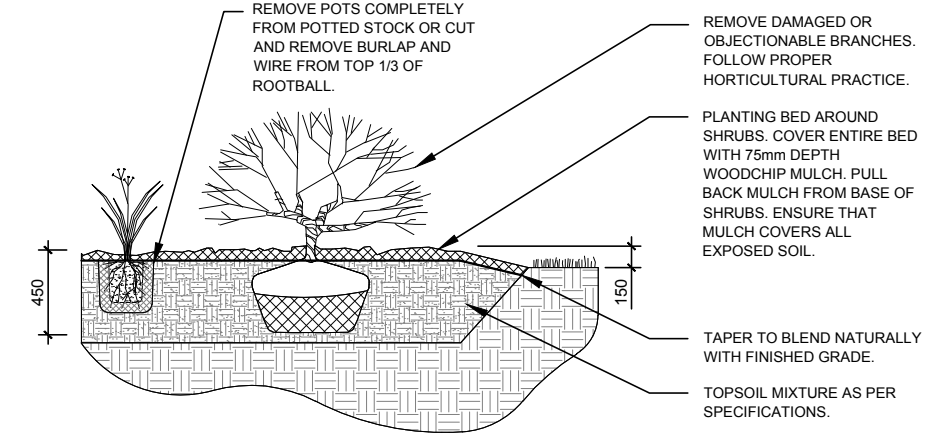


**4 TREE PROTECTION FENCE**

L1 SCALE NTS

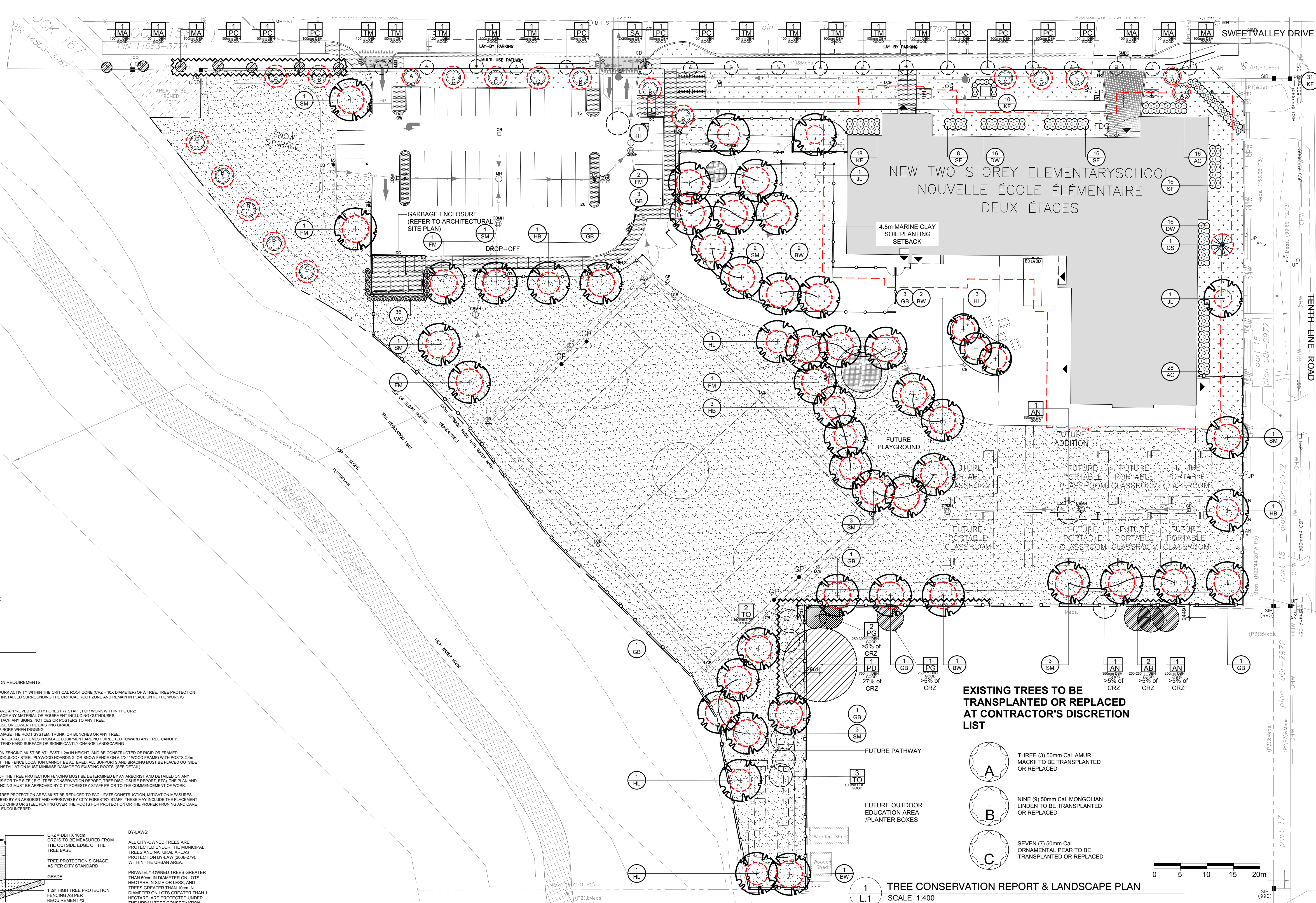
**EXISTING TREE LIST**

KEY	QTY	BOTANICAL NAME	COMMON NAME	SIZE	CONDITION	REMARKS	OWNERSHIP
AB	2	<i>Abies balsamea</i>	Balsam Fir	200-250mm DBH	GOOD	To remain	2680 TENTH LINE
AN	3	<i>Acer negundo</i>	Manitoba Maple	150-350mm DBH	GOOD	See plan	CITY OF OTTAWA
MA	6	<i>Maackia amurensis</i>	Amur Maackia	100mm DBH	GOOD	See plan	CITY OF OTTAWA
PC	10	<i>Pyrus calleryana</i>	Ornamental Pear	100mm DBH	GOOD	See plan	CITY OF OTTAWA
PD	1	<i>Populus deltoides</i>	Eastern Cottonwood	FAIR	To remain	2680 TENTH LINE	CITY OF OTTAWA
PG	1	<i>Picea glauca</i>	White Spruce	250-300mm DBH	GOOD	To remain	2680 TENTH LINE
PG	2	<i>Salix spp.</i>	Willow	2x200mm DBH	GOOD	To be removed	2680 TENTH LINE
TM	10	<i>Tilia mongolica</i>	Mongolian Linden	100mm DBH	GOOD	See plan	CITY OF OTTAWA
TO	5	<i>Thuja occidentalis</i>	Eastern White Cedar	150mm DBH	GOOD	To be removed	2666 TENTH LINE



**5 SHRUB AND ORNAMENTAL GRASS PLANTING**

L1 SCALE NTS



**EXISTING TREES TO BE TRANSPLANTED OR REPLACED AT CONTRACTOR'S DISCRETION LIST**

- THREE (3) 50mm Cal. AMUR MACKI TO BE TRANSPLANTED OR REPLACED
- NINE (9) 50mm Cal. MONGOLIAN LINDEN TO BE TRANSPLANTED OR REPLACED
- SEVEN (7) 50mm Cal. ORNAMENTAL PEAR TO BE TRANSPLANTED OR REPLACED

**1 TREE CONSERVATION REPORT & LANDSCAPE PLAN**

L1 SCALE 1:400

**PROPOSED PLANT LIST**

KEY	QTY	BOTANICAL NAME	COMMON NAME	SIZE	CONDITION	REMARKS
<b>TREES</b>						
BW	6	<i>Tilia americana</i>	Basswood	60mm cal.	B&B	
CS	1	<i>Picea pungens</i>	Colorado Spruce	1800mm ht.	B&B	
FM	6	<i>Acer x freemanii</i>	Freeman's Maple	60mm cal.	B&B	
GB	12	<i>Ginkgo biloba</i>	Maidenhair Tree	60mm cal.	B&B	Male tree
HB	5	<i>Celtis occidentalis</i>	Hackberry	60mm cal.	B&B	
HL	7	<i>Gleditsia triacanthos 'Shademaster'</i>	Shademaster Honey Locust	60mm cal.	B&B	Single leader
JL	2	<i>Syringa reticulata</i>	Japanese Tree Lilac	60mm cal.	B&B	
SM	15	<i>Acer saccharum</i>	Sugar Maple	60mm cal.	B&B	
<b>SHRUBS</b>						
AC	44	<i>Ribes alpinum</i>	Alpine Currant	800 mm ht.	Potted	1200 mm o.c.
DW	32	<i>Cornus sericea</i>	Red Osier Dogwood	800 mm ht.	Potted	1200 mm o.c.
SF	40	<i>Sorbaria sorbifolia 'Sem'</i>	Sem False Spirea	600mm ht.	B&B	1000 mm o.c.
WC	36	<i>Thuja occidentalis 'Clumps'</i>	Eastern White Cedar	2000mm ht.	Potted	600 mm o.c.
<b>ORNAMENTAL GRASSES</b>						
KF	59	<i>Calamagrostis 'Karl Foerster'</i>	Karl Foerster Grass	250mm pot	Potted	800 mm o.c.

NOTE: ALL PROPOSED PLANTING IS ON PRIVATE PROPERTY

**CONSEIL DES ÉCOLES CAHOLQUES DU CENTRE-EST**  
Le meilleur conseil qu'on puisse vous donner

**CONSULTANTS ARCHITECTS: EDWARD J. CUHACI & ASSOCIATES ARCHITECTS INC.**  
117 Queen St. Suite 100, Ottawa, Ontario, K1P 5K7  
Tel: (613) 236-1544 Telephone: (613) 236-7135 Email: info@ejca.com

**CIVIL ENGINEERS: wsp**  
T: 1-613-690-3786 M: 1-613-298-5960  
2811 Queenview Drive, Suite 300, Ottawa, Ontario, K2B 8K2 Canada

**LEGEND**

- PROPOSED PAVERS
- PROPOSED SOD
- PROPOSED SEEDED GRASS AREA
- PROPOSED ENGINEERED WOOD FIBER
- PROPOSED ASPHALT (REGULAR / HEAVY DUTY)
- EXISTING TREE TO REMAIN
- EXISTING TREE TO BE REMOVED
- REQUIRED SOIL VOLUME
- PROPOSED DECIDUOUS TREE
- REQUIRED SOIL VOLUME
- EXISTING TREE TO BE TRANSPLANTED OR REPLACED AT CONTRACTOR'S DISCRETION
- PROPOSED CONIFEROUS TREE
- PROPOSED SHRUBS / ORNAMENTAL GRASSES
- PROPOSED 1.5m HI CHAINLINK FENCE
- PROPOSED TREE PROTECTION FENCE

**GENERAL NOTES:**

- IT IS THE RESPONSIBILITY OF THE APPROPRIATE CONTRACTOR OR OFFICIAL TO REPORT ANY ERRORS, OMISSIONS OR DISCREPANCIES ON THIS PLAN WITH ACTUAL SITE CONDITIONS TO THE LANDSCAPE ARCHITECT BEFORE PROCEEDING WITH CONSTRUCTION.
- THE CONTRACTOR IS TO NOTIFY ALL UTILITY COMPANIES AND AUTHORITIES PRIOR TO ANY EXCAVATION AND ASCERTAIN LOCATIONS OF UNDERGROUND SERVICES.
- THE CONTRACTOR IS TO REINSTATE ALL AREAS AND ITEMS DAMAGED AS A RESULT OF CONSTRUCTION ACTIVITY.
- THE CONTRACTOR IS TO COMPLY WITH ALL PERTINENT CODES AND BY-LAWS.
- THE CONTRACTOR IS TO MAINTAIN A POSITIVE SURFACE RUN-OFF THROUGHOUT THE ENTIRE CONSTRUCTION PERIOD.
- THE LANDSCAPE ARCHITECT IS NOT RESPONSIBLE FOR SUBSURFACE CONDITIONS.
- THE CONTRACTOR IS TO IDENTIFY ALL EXISTING TREES TO REMAIN ON SITE WITH THE LANDSCAPE ARCHITECT PRIOR TO CONSTRUCTION.
- THE CONTRACTOR IS TO STAKE THE PROPOSED LOCATION OF ALL PLANT MATERIAL IN CONJUNCTION WITH THE LANDSCAPE ARCHITECT PRIOR TO EXCAVATION.
- MINIMUM DISTANCES FOR SELECTED DECIDUOUS TREES ARE AS FOLLOWS:
  - BUILDING FOUNDATIONS - 7.5M
  - SIDEWALKS - 1.5M
  - PUBLIC STREETS - 2.5M
  - UNDERGROUND INFRASTRUCTURE - 2.0M
- ALL TREES WITHIN 1M OF UNDERGROUND UTILITY TRENCHES ARE TO BE EXCAVATED BY HAND.
- REMOVE ALL PROTECTIVE WRAPPING FROM TREE TRUNKS AFTER INSTALLATION.
- STAKING OF TREES SHALL ONLY BE PERFORMED IF NECESSARY.
- ENSURE THAT MULCH IS PULLED BACK A MINIMUM DISTANCE OF 75MM FROM BASE OF TREE TRUNK.
- TREE REMOVAL IS NOT TO TAKE PLACE BETWEEN APRIL 15TH AND AUGUST 15TH DURING BIRD NESTING SEASON.

No.	Issue	Date	DR	CK
6	REVISED PER CITY COMMENTS	02/22/2024	ML	JL
5	UPDATED PER ZONING AMENDMENT	12/15/2023	ML	JL
4	SEEDED GRASS AREAS ADDED	09/17/2023	ML	JL
3	ISSUED FOR BUILDING PERMIT	07/21/2023	ML	JL
2	ISSUED FOR 66% REVIEW	06/23/2023	ML	JL
1	ISSUED FOR SITE PLAN CONTROL	06/12/2023	ML	JL

**JAMES B. LENNOX & ASSOCIATES INC. LANDSCAPE ARCHITECTS**  
3332 CARLING AVE. OTTAWA, ONTARIO K2H 5A5  
Tel: (613) 732-5168 Fax: (613) 732-5168

**PROJECT: AVALON III ELEMENTARY SCHOOL**

**DRAWING: TREE CONSERVATION REPORT AND LANDSCAPE PLAN**

**STAMP: ASSOCIATION OF LANDSCAPE ARCHITECTS**

**SCALE: AS SHOWN**

**START DATE: MAY, 2023**

**PROJECT NO.: 23EJC2351**

**DRAWING NO.: L.1**

**PLOT SIZE ARCH-D**

D07-12-23-0094