

**LEGEND:**

■ PROPOSED ROADWAY MODIFICATIONS

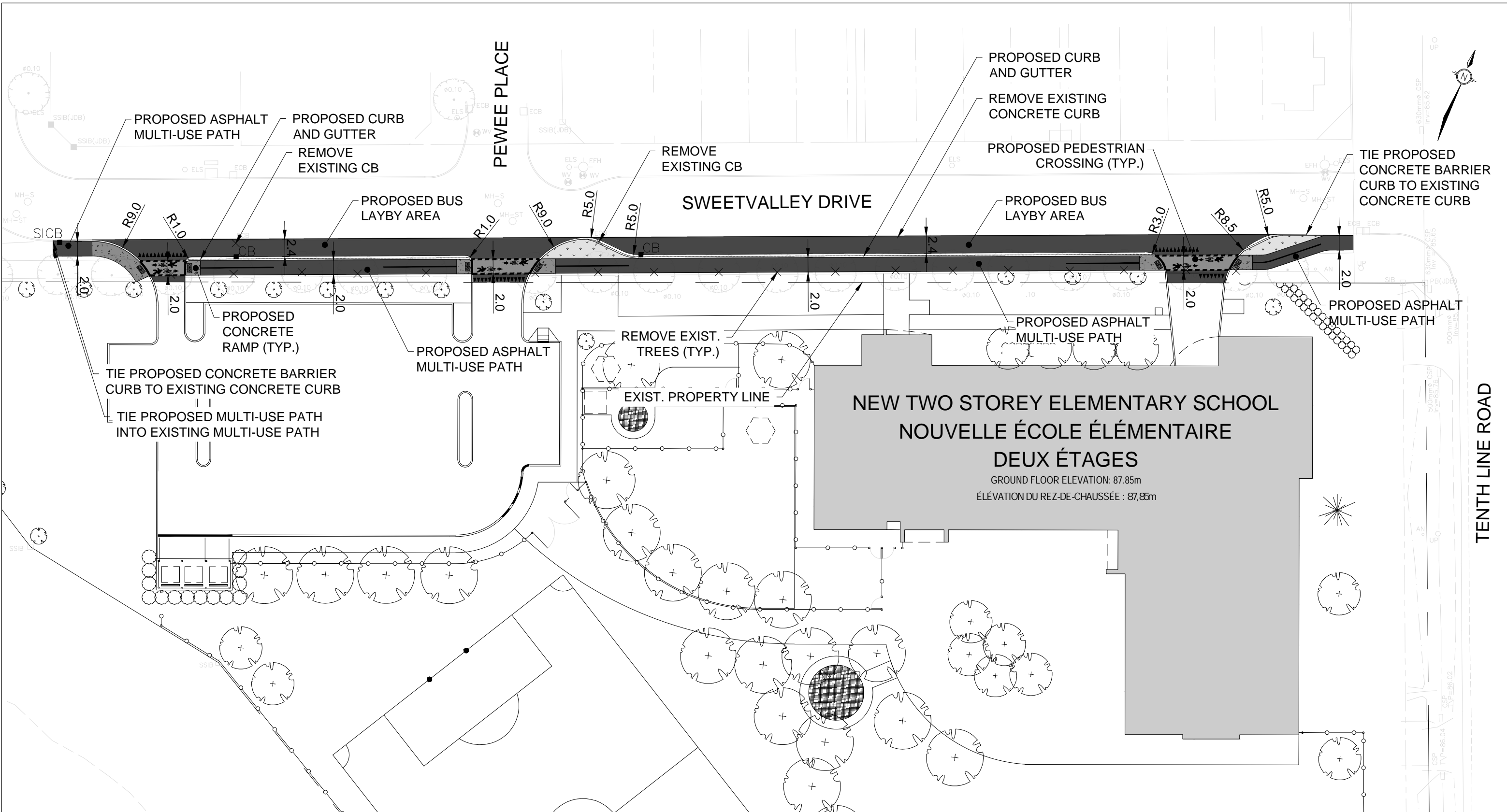
▨ PROPOSED DEVELOPMENT SITE

**Ottawa**  
TRANSPORTATION SERVICES  
DEPARTMENT

**KEY PLAN**  
**PROPOSED ROADWAY  
MODIFICATION**  
**ÉCOLE ÉLÉMENTAIRE  
AVALON III  
ELEMENTARY SCHOOL**

**TRANSPORTATION ENGINEERING SERVICES**

Approved By:	M.E.K.	Drawing No.:
Completed By:	DILLON CONSULTING LTD	
Scale:	Date:	<b>RMA-2023- XXX-XXXX</b>
1:5,000	JUN. 2023	



**LEGEND:**

	EXISTING CURB		PROPOSED DEPRESSED CURB		PROPOSED CATCH BASIN
	PROPOSED CONCRETE		PROPOSED ASPHALT		PROPOSED SOD
	PROPOSED TACTILE PLATE (TWSI)				



**PROPOSED ROADWAY MODIFICATION**

**ÉCOLE ÉLÉMENTAIRE AVALON III**  
**ELEMENTARY SCHOOL**

TRANSPORTATION ENGINEERING SERVICES	
Approved By: M.E.K.	Drawing No.:
Completed By: DILLON CONSULTING LTD	<b>RMA-2023-XXX-XXXX</b>
Scale: 1:500	Date: JUN. 2023

**Avalon III School Roadway Modification**

**CLASS D - CONSTRUCTION COST ESTIMATE**

No.	Description	Spec	Unit	Quantity	Unit Price	Estimated Cost
<b>ROADWAY</b>						
1	Traffic Control Plan	F-1010	LS	1	\$26,619	\$26,619.00
2	Pedestrian Control Plan	F1013	LS	1	\$6,895	\$6,894.85
3	Erosion and Sediment Control	805, F-1005	LS	1	\$2,856	\$2,856.30
4	Contract Initiation	F-1006	LS	1	\$5,860	\$5,859.50
5	Earth Excavation	206, 510, F-2060, F-4104	m3	251	\$26	\$6,659.02
6	Remove and Relocate Tree	F-8047	ea	18	\$350	\$6,300.00
7	Remove Catch Basin	510	ea	2	\$487	\$974.92
8	Remove Concrete Curb	510	m	172	\$26	\$4,515.56
9	Asphalt Surface with Gravel Base	F-6205	m <sup>2</sup>	436	\$155	\$67,649.13
10	Concrete Barrier Curb	353, 904, F-3531, F-9040, F-9045	m	45	\$126	\$5,727.68
11	Concrete Barrier Curb with Gutter	353, 904, F-3531, F-9040, F-9046	m	125	\$125	\$15,585.77
12	Tactile Walking Surface Indicator (TWSI)	351, F-3512	m <sup>2</sup>	4	\$1,202	\$5,365.15
13	Concrete Sidewalk with Granular 'A'	351, F-3531, F-9040, F-9045	m <sup>2</sup>	41	\$88	\$3,624.14
14	Asphalt Sidewalks (MUP)	311, F-3110	m <sup>3</sup>	27	\$57	\$1,537.94
15	Catch Basin (600mm X 600mm)	407, F-4070	ea	3	\$3,847	\$11,539.89
16	Sod, Water Included	803, F-8031	m <sup>2</sup>	34	\$32	\$1,072.70
17	Topsoil	802, F-8021	m <sup>3</sup>	5	\$133	\$676.11
18	Pavement marking and signage		LS	1	\$20,000	\$20,000.00
<b>ROAD SUB-TOTAL</b>						<b>\$193,457.67</b>
<b>CONSTRUCTION TOTAL</b>						<b>\$193,457.67</b>
Engineering and Architectural Services					15.0%	\$29,018.65
Utilities					15.0%	\$29,018.65
Property						
City Internal Costs					10.0%	\$19,345.77
Miscellaneous					5.0%	\$9,672.88
<b>SUB-TOTAL</b>						<b>\$280,513.62</b>
Contingency					30.0%	\$84,154.08
<b>TOTAL PRELIMINARY COST ESTIMATE</b>						<b>\$364,667.70</b>