

MATERIALS LEGEND

	SPECIAL MASONRY UNITS SMA1
	SPECIAL MASONRY UNITS SMA2
	EXTERIOR COMPOSITE ALUMINUM PANEL SYSTEM COLOUR 1
	EXTERIOR COMPOSITE ALUMINUM PANEL SYSTEM COLOUR 2
	EXTERIOR COMPOSITE ALUMINUM PANEL SYSTEM COLOUR 3
	INSULATED SPANDEL GLAZING WITH INSULATED BACK PANEL BEHIND IN ALUMINUM CURTAIN WALL
	VISION INSULATED GLASS UNITS CLEAR IN ALUMINUM CURTAIN WALL
	VISION INSULATED GLASS UNITS CERAMIC FREE PATTERN IN ALUMINUM CURTAIN WALL
	VISION INSULATED GLASS UNITS TRANSLUCENT IN ALUMINUM CURTAIN WALL
	PRE-FINISHED METAL SIDING

1	1	2024/02/21	RE-ISSUED FOR SITE PLAN CONTROL
1	0	2023/06/21	ISSUED FOR SITE PLAN CONTROL

ISSUE NO. REV. NO. DATE BY/REVISED ISSUE

LES IDÉES, CONCEPTS, DISPOSITIONS ET PLANS MONTRÉS OU REPRÉSENTÉS PAR CE DESSIN APPARTIENNENT À EDWARD J. CUHACI AND ASSOCIATES ARCHITECTS INC. ET ONT ÉTÉ CRÉÉS ET DÉVELOPPÉS POUR ÊTRE UTILISÉS DANS LE CADRE DU PRÉSENT PROJET. ILS NE DOIVENT PAS ÊTRE UTILISÉS À D'AUTRES FINS NI COMMUNIQUÉS À QUI QUE CE SOIT SANS LA PERMISSION ÉCRITE DE EDWARD J. CUHACI AND ASSOCIATES ARCHITECTS INC.

L'ARCHITECTE DÉCLINE TOUTE RESPONSABILITÉ DÉCOULANT DE PROBLÈMES FAISANT SUITE AU NON-RESPECT DES PLANS ET DEVIS OU DE L'INTENTION DU CONCEPT QU'ILS TRANSMETTENT OU DE TOUTS PROBLÈMES POUVANT RÉSULTER DU DÉFAUT DE TIERS D'OBTENIR OU DE SUIVRE LES INSTRUCTIONS DE L'ARCHITECTE RELATIVEMENT AUX ERREURS, OMISSIONS, INCOHÉRENCES, AMBIGUITÉS OU CONTRADICTIONS ALLÉGUÉES.

L'ENTREPRENEUR DOIT VÉRIFIER TOUTES LES DIMENSIONS SUR PLACE ET INFORMER L'ARCHITECTE DE TOUT ÉCART AVANT LE DÉBUT DES TRAVAUX. NE PAS MESURER LES DESSINS À L'ÉCHELLE.

ALL IDEAS, DESIGNS, ARRANGEMENTS, AND PLANS INDICATED OR REPRESENTED BY THIS DRAWING ARE OWNED BY AND THE PROPERTY OF EDWARD J. CUHACI AND ASSOCIATES INC. AND WERE CREATED, EVOLVED, AND DEVELOPED FOR USE ON AND IN CONNECTION WITH THE SPECIFIED PROJECT. NONE OF THE IDEAS, DESIGNS, ARRANGEMENTS OR PLANS SHALL BE USED BY OR DISCLOSED TO ANY PERSON, FIRM, OR CORPORATION FOR ANY PURPOSE WHATSOEVER WITHOUT THE WRITTEN PERMISSION OF EDWARD J. CUHACI AND ASSOCIATES INC.

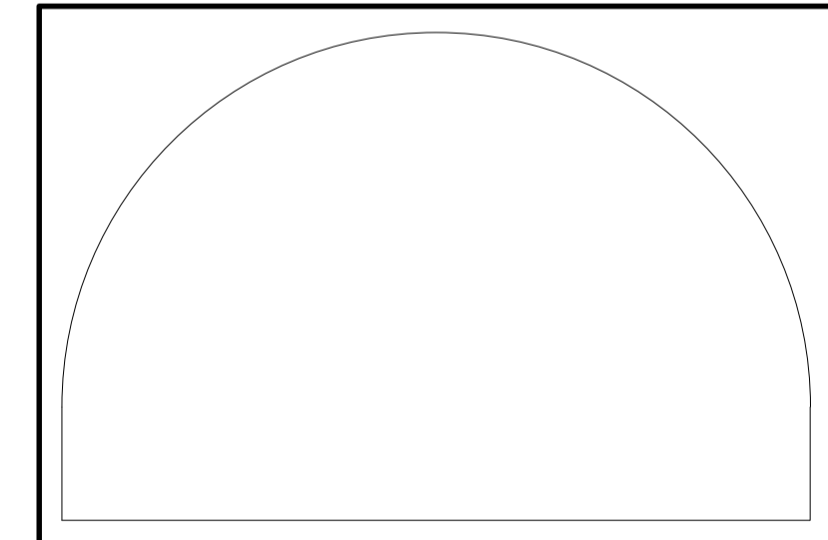
THE ARCHITECT WAIVES ANY AND ALL RESPONSIBILITY AND LIABILITY FOR PROBLEMS WHICH ARISE FROM FAILURE TO FOLLOW THESE PLANS, SPECIFICATIONS, AND THE DESIGN INTENT THEY CONVEY, OR FOR PROBLEMS WHICH ARISE FROM OTHERS' FAILURE TO OBTAIN AND/OR FOLLOW THE ARCHITECT'S GUIDANCE WITH RESPECT TO ANY ERRORS, OMISSIONS, INCONSISTENCIES, AMBIGUITIES OR CONFLICTS WHICH ARE ALLEGED.

CONTRACTOR TO VERIFY ALL DIMENSIONS AND NOTIFY THE ARCHITECT OF ANY DISCREPANCIES BEFORE WORK COMMENCES. DO NOT SCALE DRAWINGS

TRUE NORTH

PLAN NORTH

ONTARIO ASSOCIATION OF ARCHITECTS
ZOFIA ORLOWSKA-KRZEMIEWICZ
LICENCE 5281



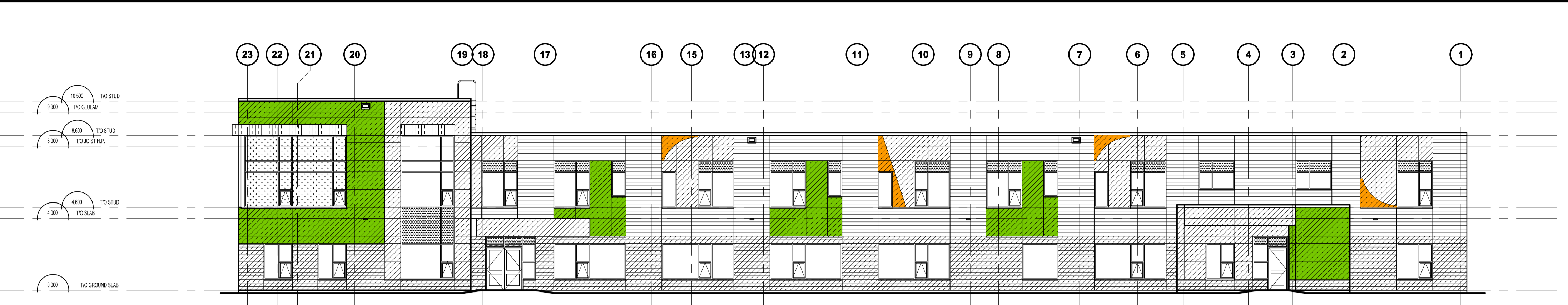
EDWARD J. CUHACI & ASSOCIATES ARCHITECTS Inc.
171 Slater St., Suite 100, Ottawa, Ontario, K1P 5H7
Fax: (613) 236-1944 Telephone: (613) 236-7135 E-mail: info@cuhaci.com

PROJECT TITLE/TITRE DU PROJET
ÉCOLE ÉLÉMENTAIRE CATHOLIQUE AVALON III
2666 TENTH LINE ROAD
OTTAWA, ONTARIO

CECCE
4000 LABELLE STREET
OTTAWA, ONTARIO, K1J 1A1

DRAWING TITLE/TITRE DU DESSIN
ELEVATIONS

SCALE ÉCHELLE	1:500	PROJ. No	2215	ISSUE No	1	REV. No	1
DRAWN BY DESSINÉ PAR	S.P.	DRAWING/DESSIN					A200
CHECKED BY VÉRIFIÉ PAR	Z.O.J.	DATE					
DATE	JANUARY 2022	FICHER ACAD FILE: 2215-A200.dwg					



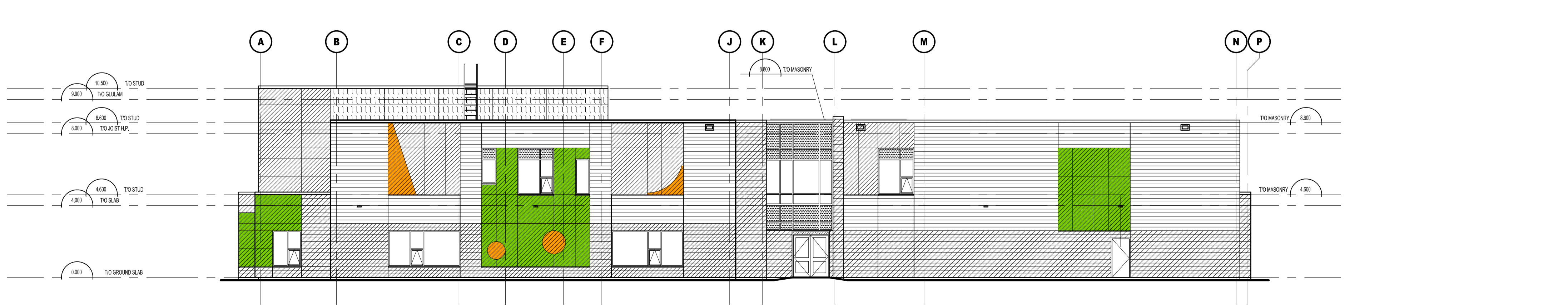
1 NORTH ELEVATION
A200 1:150



2 EAST ELEVATION
A200 1:150



3 SOUTH ELEVATION
A200 1:150



4 WEST ELEVATION
A200 1:150

Allison Hamlin

**ALLISON HAMLIN, MCIP, RPP
(ACTING) MANAGER,
DEVELOPMENT REVIEW ALL WARDS PLANNING,
DEVELOPMENT & BUILDING SERVICES
DEPARTMENT, CITY OF OTTAWA**

APPROVED
By Allison Hamlin at 3:38 pm, Jul 22, 2024

Plot Date: 2022-06-27 Plot Time: 10:07:27 Plot By: SIMON RICHU
 PLOT SETUP FOR ELEV. USE ONLY
 PLOTTER: DWG TO PDF PLOT3
 Page Setup