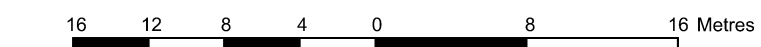


PART OF LOT 5
CONCESSION 11
Geographic Township of Cumberland
CITY OF OTTAWA
Surveyed by Annis, O'Sullivan, Vollebakk Ltd.

Scale 1 : 400

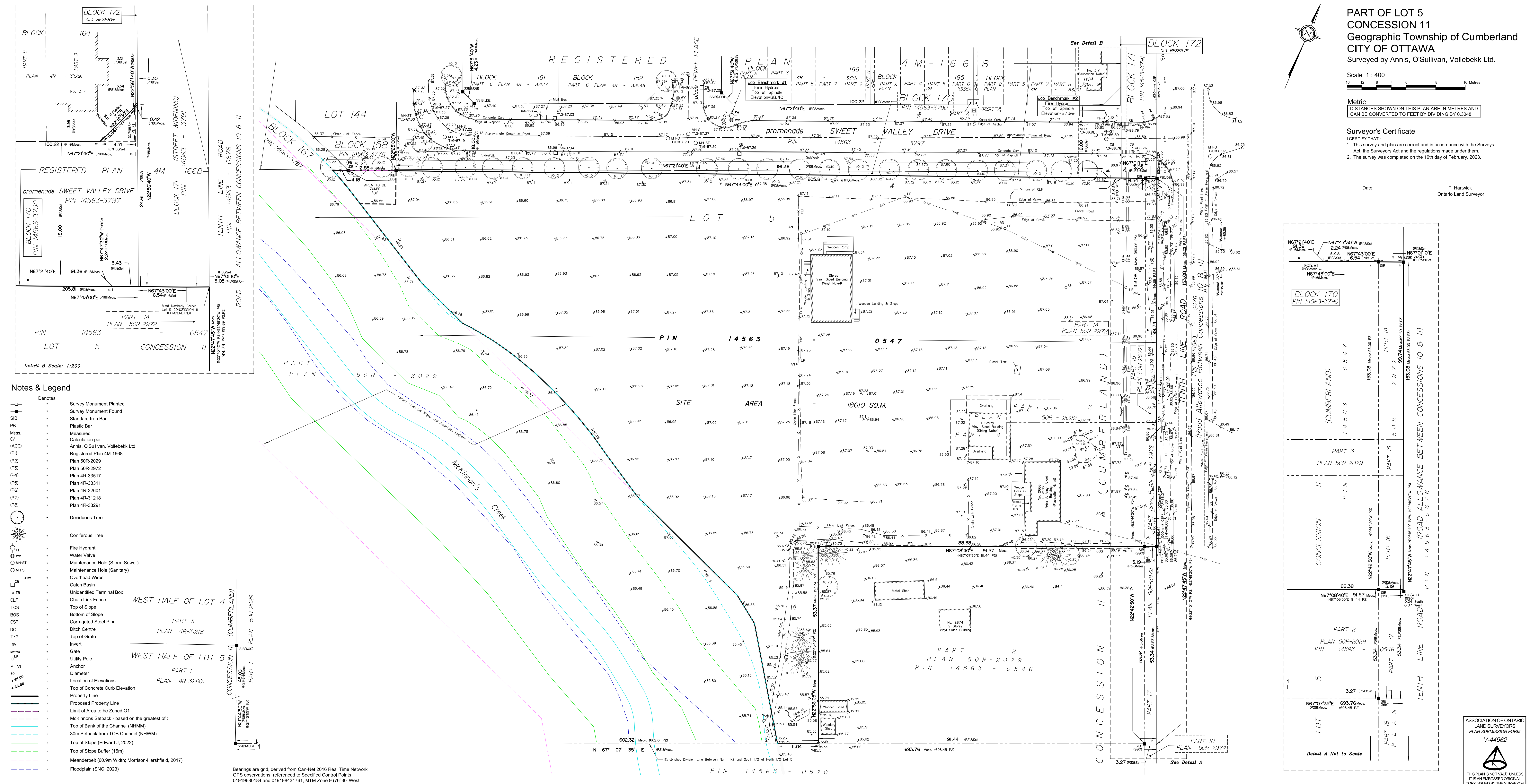


Metric
DISTANCES SHOWN ON THIS PLAN ARE IN METRES AND
CAN BE CONVERTED TO FEET BY DIVIDING BY 0.3048

Surveyor's Certificate

- I CERTIFY THAT:
1. This survey and plan are correct and in accordance with the Surveys Act, the Surveyors Act and the regulations made under them.
2. The survey was completed on the 10th day of February, 2023.

Date: T. Hartwick, Ontario Land Surveyor



- Notes & Legend
Denotes: Survey Monument Planted, Survey Monument Found, Standard Iron Bar, Plastic Bar, Measured, Calculation per Annis, O'Sullivan, Vollebakk Ltd., Registered Plan 4M-1668, Plan 50R-2029, Plan 50R-2972, Plan 4R-33517, Plan 4R-33311, Plan 4R-32601, Plan 4R-31218, Plan 4R-33291, Deciduous Tree, Coniferous Tree, Fire Hydrant, Water Valve, Maintenance Hole (Storm Sewer), Maintenance Hole (Sanitary), Overhead Wires, Catch Basin, Unidentified Terminal Box, Chain Link Fence, Top of Slope, Bottom of Slope, Corrugated Steel Pipe, Ditch Centre, Top of Grate, Invert, Gate, Utility Pole, Anchor, Diameter, Location of Elevations, Top of Concrete Curb Elevation, Property Line, Proposed Property Line, Limit of Area to be Zoned O1, McKimms Setback, Top of Bank of the Channel (NHM), 30m Setback from TOB Channel (NHWM), Top of Slope (Edward J, 2022), Top of Slope Buffer (15m), Meanderbelt (60.9m Width; Morrison-Hersfield, 2017), Floodplain (SNC, 2023)

Bearings are grid, derived from Can-Net 2016 Real Time Network GPS observations, referenced to Specified Control Points 01919680184 and 019198434761, MTM Zone 9 (76°30' West Longitude) NAD-83 (original).

For bearing comparisons, a rotation of 0°42'10" counter-clockwise was applied to bearings on plan (P2).

Topographic data was collected under Winter Conditions. Snow cover and ice preclude determining location and elevation of some topographic data that is otherwise visible.

ELEVATION NOTES

- 1. Elevations shown are geoidetic and are referred to the CGVD28 geoidetic datum.
2. It is the responsibility of the user of this information to verify that the job benchmark has not been altered or disturbed and that its relative elevation and description agrees with the information shown on this drawing.

UTILITY NOTES

- 1. This drawing cannot be accepted as acknowledging all of the utilities and it will be the responsibility of the user to contact the respective utility authorities for confirmation.
2. Only visible surface utilities were located.
3. A field location of underground plant by the pertinent utility authority is mandatory before any work involving breaking ground, probing, excavating etc.

ASSOCIATION OF ONTARIO LAND SURVEYORS PLAN SUBMISSION FORM V-44962
© Annis, O'Sullivan, Vollebakk Ltd. 2023. THIS PLAN IS PROTECTED BY COPYRIGHT.
ANNIS, O'SULLIVAN, VOLLEBAKK LTD.
14 Concession Gate, Suite 500
Nepean, Ont. K2E 7S6
Phone: (613) 727-0650 Fax: (613) 727-1079
Email: info@anniso.com