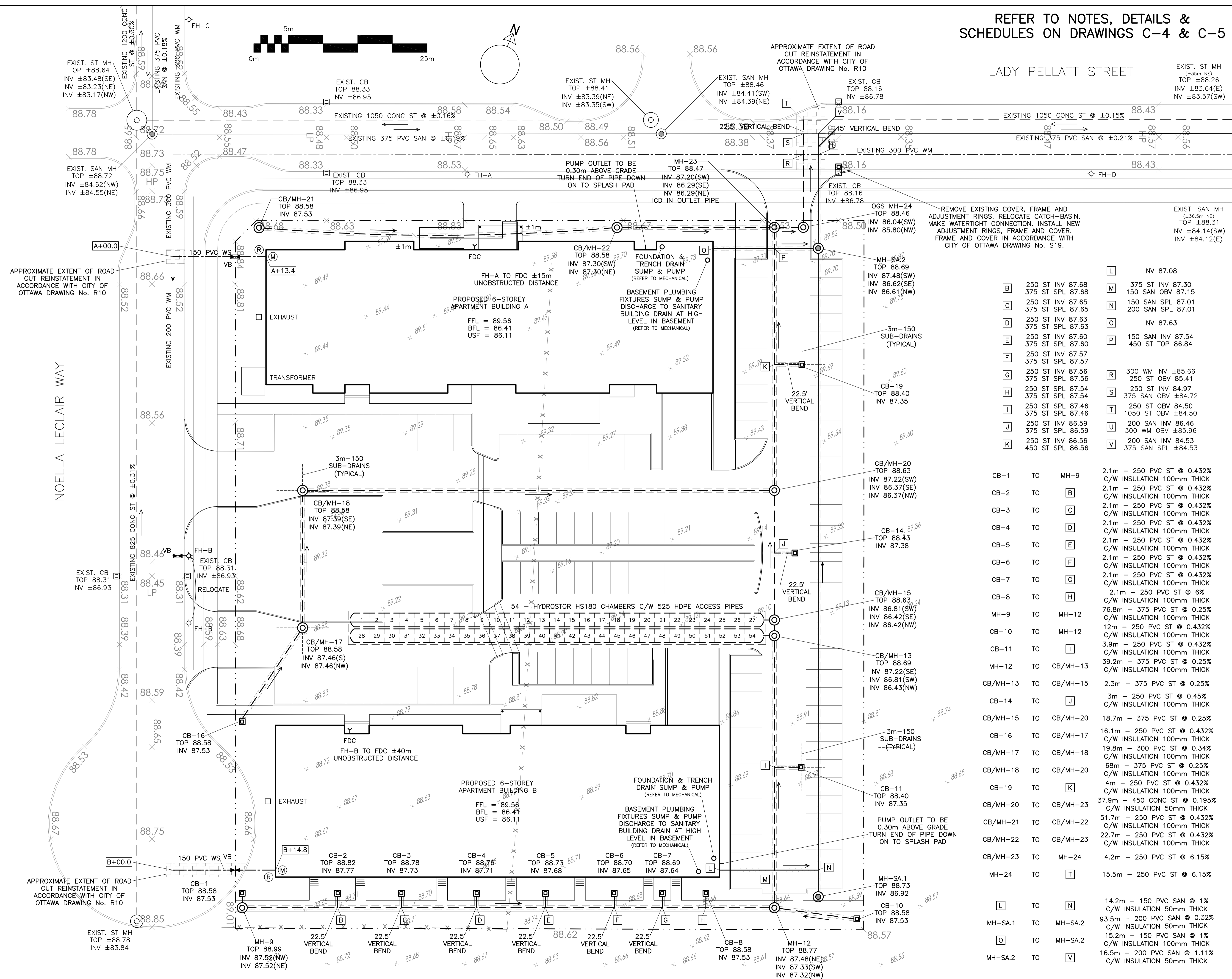


REFER TO NOTES, DETAILS & SCHEDULES ON DRAWINGS C-4 & C-5

LADY PELLATT STREET



LEGEND

- FFL FINISHED FLOOR ELEVATION
- BFL BASEMENT FLOOR ELEVATION
- USF UNDERSIDE OF FOOTING
- PROPERTY LINE
- CB CATCH-BASIN
- MH STORM MANHOLE
- CB/MH CATCH-BASIN/MANHOLE
- MH SANITARY MANHOLE
- FH FIRE HYDRANT
- FDC FIRE DEPARTMENT CONNECTION
- VB VALVE & VALVE BOX
- (M) WATER METER
- (R) REMOTE WATER METER
- SAN SANITARY SEWER
- ST STORM SEWER
- WS/WM WATER SERVICE/WATERMAIN
- OBV OBVERT OF PIPE
- SPL SPRINGLINE OF PIPE
- INV INVERT OF PIPE
- +99.99 EXISTING GRADE ELEVATION
- 150mm BARRIER CURB

B	250 ST INV 87.68	M	375 ST INV 87.30
C	250 ST INV 87.65	N	150 SAN SPL 87.01
D	250 ST INV 87.63	O	200 SAN SPL 87.01
E	250 ST INV 87.63	P	150 SAN INV 87.54
F	250 ST INV 87.60	R	450 ST TOP 86.84
G	250 ST INV 87.57	S	300 WM INV ±85.66
H	250 ST INV 87.56	T	250 ST INV 84.97
I	250 ST INV 87.54	U	375 SAN OBV ±84.72
J	250 ST INV 87.46	V	250 ST INV 84.50
K	250 ST INV 87.46		1050 ST OBV ±84.50
	250 ST INV 86.59		200 SAN INV 86.46
	250 ST INV 86.59		300 WM OBV ±85.96
	450 ST SPL 86.56		200 SAN INV 84.53
			375 SAN SPL ±84.53

CB-1	TO	MH-9	2.1m - 250 PVC ST @ 0.432% C/W INSULATION 100mm THICK
CB-2	TO	B	2.1m - 250 PVC ST @ 0.432% C/W INSULATION 100mm THICK
CB-3	TO	C	2.1m - 250 PVC ST @ 0.432% C/W INSULATION 100mm THICK
CB-4	TO	D	2.1m - 250 PVC ST @ 0.432% C/W INSULATION 100mm THICK
CB-5	TO	E	2.1m - 250 PVC ST @ 0.432% C/W INSULATION 100mm THICK
CB-6	TO	F	2.1m - 250 PVC ST @ 0.432% C/W INSULATION 100mm THICK
CB-7	TO	G	2.1m - 250 PVC ST @ 0.432% C/W INSULATION 100mm THICK
CB-8	TO	H	2.1m - 250 PVC ST @ 6% C/W INSULATION 100mm THICK
MH-9	TO	MH-12	76.8m - 375 PVC ST @ 0.25% C/W INSULATION 100mm THICK
CB-10	TO	MH-12	12m - 250 PVC ST @ 0.432% C/W INSULATION 100mm THICK
CB-11	TO	I	3.9m - 250 PVC ST @ 0.432% C/W INSULATION 100mm THICK
MH-12	TO	CB/MH-13	39.2m - 375 PVC ST @ 0.25% C/W INSULATION 100mm THICK
CB/MH-13	TO	CB/MH-15	2.3m - 375 PVC ST @ 0.25%
CB-14	TO	J	3m - 250 PVC ST @ 0.45% C/W INSULATION 100mm THICK
CB/MH-15	TO	CB/MH-20	18.7m - 375 PVC ST @ 0.25%
CB-16	TO	CB/MH-17	16.1m - 250 PVC ST @ 0.432% C/W INSULATION 100mm THICK
CB/MH-17	TO	CB/MH-18	19.8m - 300 PVC ST @ 0.34% C/W INSULATION 100mm THICK
CB/MH-18	TO	CB/MH-20	68m - 375 PVC ST @ 0.25% C/W INSULATION 100mm THICK
CB-19	TO	K	4m - 250 PVC ST @ 0.432% C/W INSULATION 100mm THICK
CB/MH-20	TO	CB/MH-23	37.9m - 450 CONC ST @ 0.195% C/W INSULATION 50mm THICK
CB/MH-21	TO	CB/MH-22	51.7m - 250 PVC ST @ 0.432% C/W INSULATION 100mm THICK
CB/MH-22	TO	CB/MH-23	22.7m - 250 PVC ST @ 0.432% C/W INSULATION 100mm THICK
CB/MH-23	TO	MH-24	4.2m - 250 PVC ST @ 6.15%
MH-24	TO	T	15.5m - 250 PVC ST @ 6.15%
L	TO	N	14.2m - 150 PVC SAN @ 1% C/W INSULATION 50mm THICK
MH-SA-1	TO	MH-SA-2	93.5m - 200 PVC SAN @ 0.32% C/W INSULATION 50mm THICK
O	TO	MH-SA-2	15.2m - 150 PVC SAN @ 1% C/W INSULATION 100mm THICK
MH-SA-2	TO	V	16.5m - 200 PVC SAN @ 1.11% C/W INSULATION 50mm THICK

No.	DATE	REVISION
3	DEC 15-23	RE-ISSUED FOR APPROVAL
2	JUN 28-23	ISSUED FOR APPROVAL
1	JUN 26-23	ISSUED FOR COORDINATION

D. B. GRAY ENGINEERING INC.
Stormwater Management - Grading & Drainage - Storm & Sanitary Sewers - Watermain
 700 Long Point Circle
 Ottawa, Ontario
 613-425-8044
 d.gray@dbgrayengineering.com

Project
PROPOSED 6-STORY APARTMENT BUILDINGS
 1001 NOELLA LECLAIR WAY
 OTTAWA, ONTARIO

Drawing Title
SITE SERVICING PLAN

Engineer's Seal

 NOT VALID UNLESS SIGNED & DATED

Drawn D.B.G.
 H. Scale 1:250
 V. Scale
 Date JUN 12-23
 Job No. 22068

Drawing No.
C-1
 of 6

REFER TO NOTES, DETAILS & SCHEDULES ON DRAWINGS C-4 & C-5

LADY PELLATT STREET

EXIST. ST MH TOP ±88.26

LEGEND

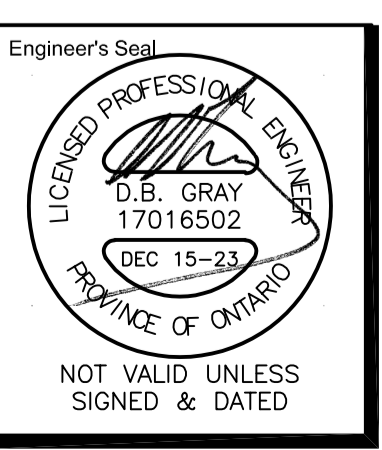
- FFL FINISHED FLOOR ELEVATION
- BFL BASEMENT FLOOR ELEVATION
- USF UNDERSIDE OF FOOTING
- PROPERTY LINE
- CB CATCH-BASIN
- MH STORM MANHOLE
- CB/MH CATCH-BASIN/MANHOLE
- MH SANITARY MANHOLE
- FH FIRE HYDRANT
- FDC FIRE DEPARTMENT CONNECTION
- +99.99 EXISTING GRADE ELEVATION
- +99.99 PROPOSED GRADE ELEVATION
- 2% PROPOSED SLOPE OF GRADE
- ⇨ EMERGENCY OVERLAND FLOW
- CENTERLINE OF SWALE
- 150mm BARRIER CURB
- D.C. DEPRESSED CURB
- /// LIGHT-DUTY PAVEMENT
- /// HEAVY-DUTY PAVEMENT
- CONCRETE
- LANDSCAPE

No.	DATE	REVISION
3	DEC 15-23	RE-ISSUED FOR APPROVAL
2	JUN 28-23	ISSUED FOR APPROVAL
1	JUN 26-23	ISSUED FOR COORDINATION

D. B. GRAY ENGINEERING INC.
 Stormwater Management - Grading & Drainage - Storm & Sanitary Sewers - Watermain
 700 Long Point Circle Ottawa, Ontario
 613-425-8044
 d.gray@dbgrayengineering.com

Project
PROPOSED 6-STORY APARTMENT BUILDINGS
 1001 NOELLA LECLAIR WAY
 OTTAWA, ONTARIO

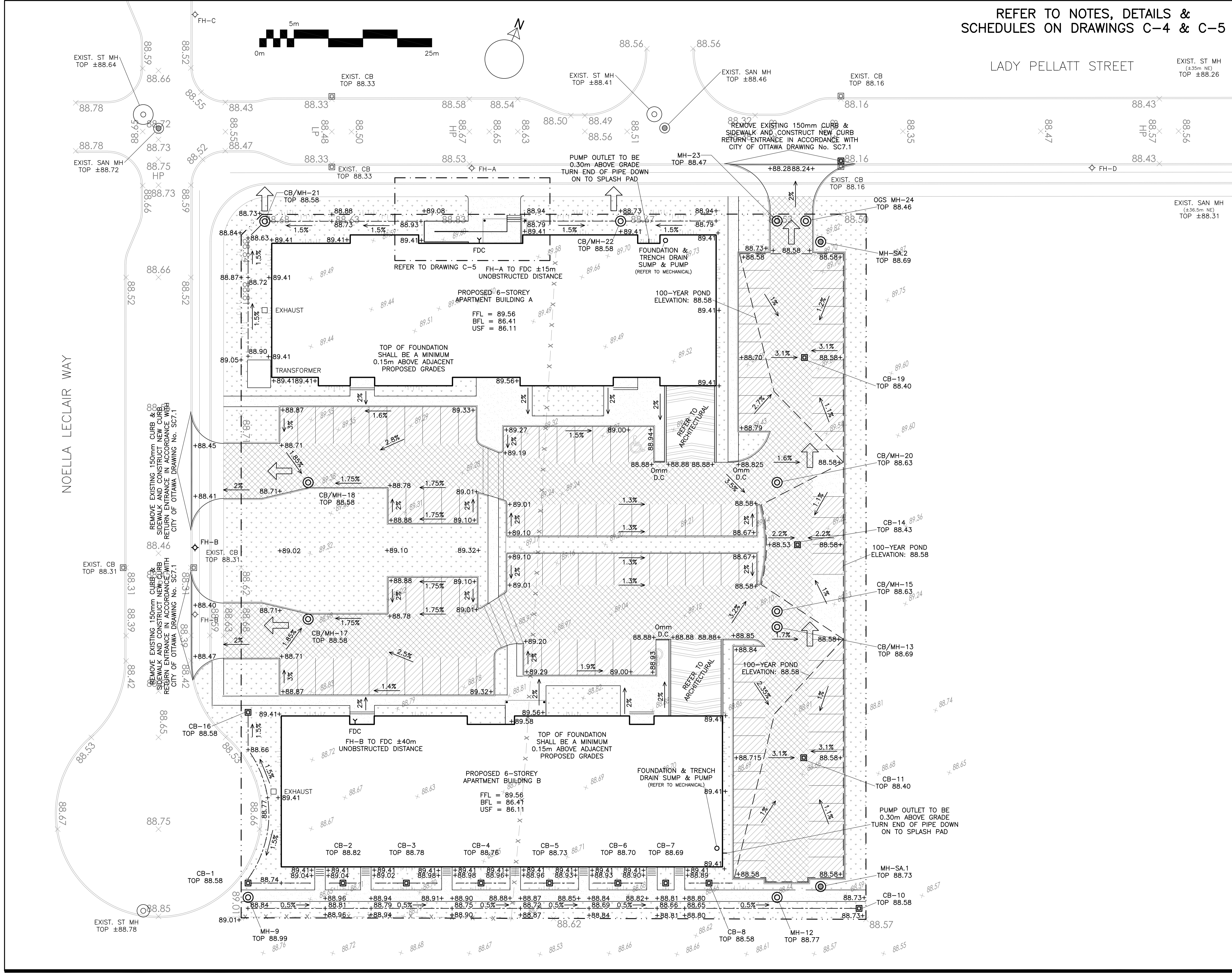
Drawing Title
GRADING PLAN



Engineer's Seal
 Drawn D.B.G.
 H. Scale 1:250
 V. Scale
 Date JUN 12-23
 Job No. 22068

Drawing No.
C-2
 of 6

#19033



NOELLA LECLAIR WAY

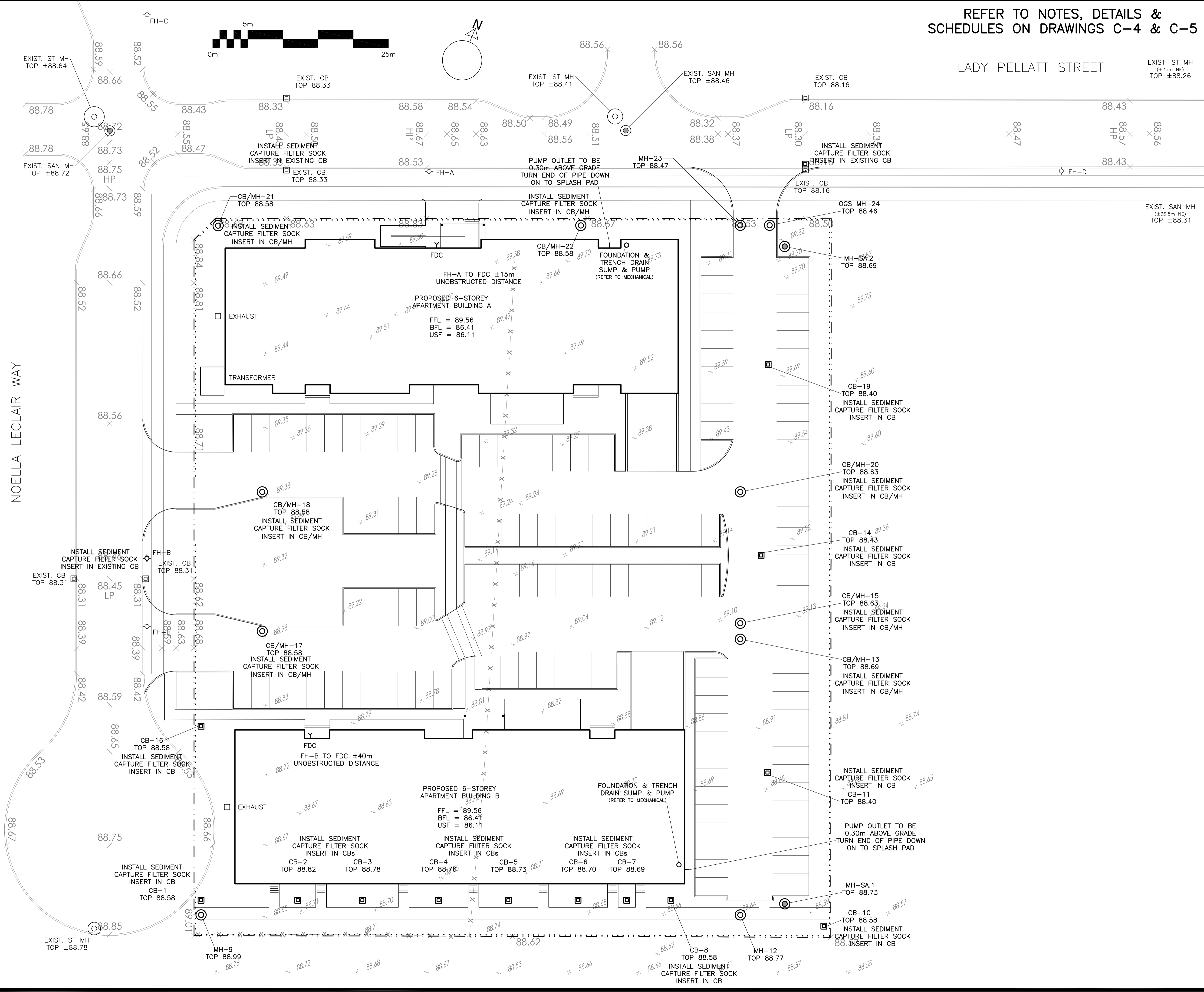
REFER TO NOTES, DETAILS &
SCHEDULES ON DRAWINGS C-4 & C-5

LADY PELLATT STREET

EXIST. ST MH
TOP ±88.26

LEGEND

- FFL FINISHED FLOOR ELEVATION
- BFL BASEMENT FLOOR ELEVATION
- USF UNDERSIDE OF FOOTING
- PROPERTY LINE
- CB [Symbol] CATCH-BASIN
- MH [Symbol] STORM MANHOLE
- CB/MH [Symbol] CATCH-BASIN/MANHOLE
- MH [Symbol] SANITARY MANHOLE
- FH [Symbol] FIRE HYDRANT
- FDC [Symbol] FIRE DEPARTMENT CONNECTION
- - - - - EXISTING GRADE ELEVATION
- ===== 150mm BARRIER CURB
- SILT FENCE BARRIER

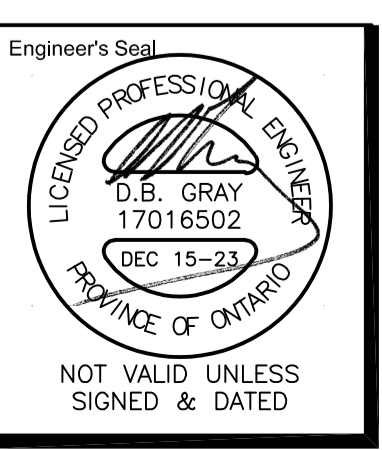


No.	DATE	REVISION
3	DEC 15-23	RE-ISSUED FOR APPROVAL
2	JUN 28-23	ISSUED FOR APPROVAL
1	JUN 26-23	ISSUED FOR COORDINATION

D. B. GRAY ENGINEERING INC.
Stormwater Management - Grading & Drainage - Storm & Sanitary Sewers - Watermain
 700 Long Point Circle 613-425-8044
 Ottawa, Ontario d.gray@dbgrayengineering.com

Project
PROPOSED 6-STORY APARTMENT BUILDINGS
 1001 NOELLA LECLAIR WAY
 OTTAWA, ONTARIO

Drawing Title
EROSION & SEDIMENT CONTROL PLAN

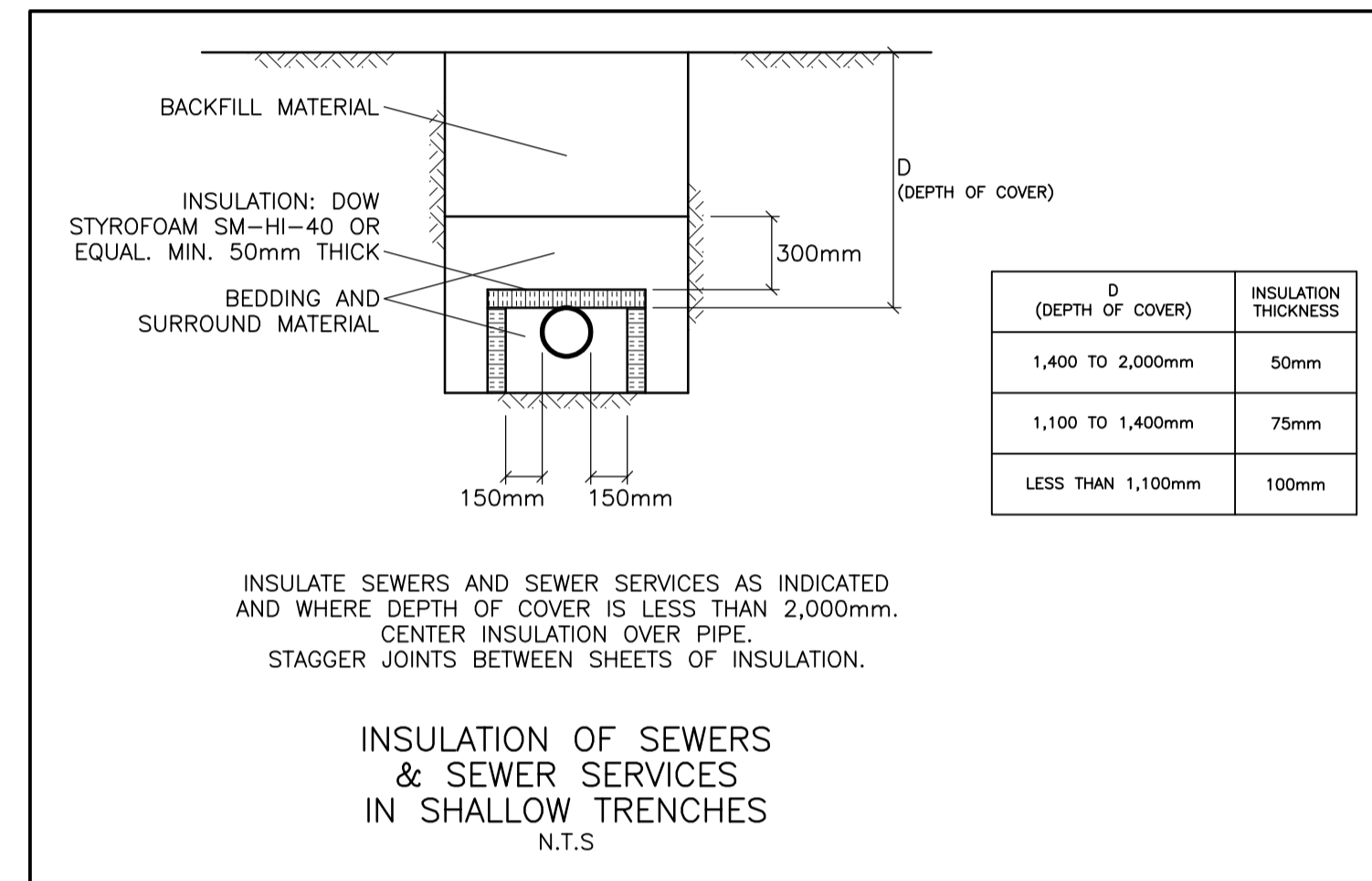
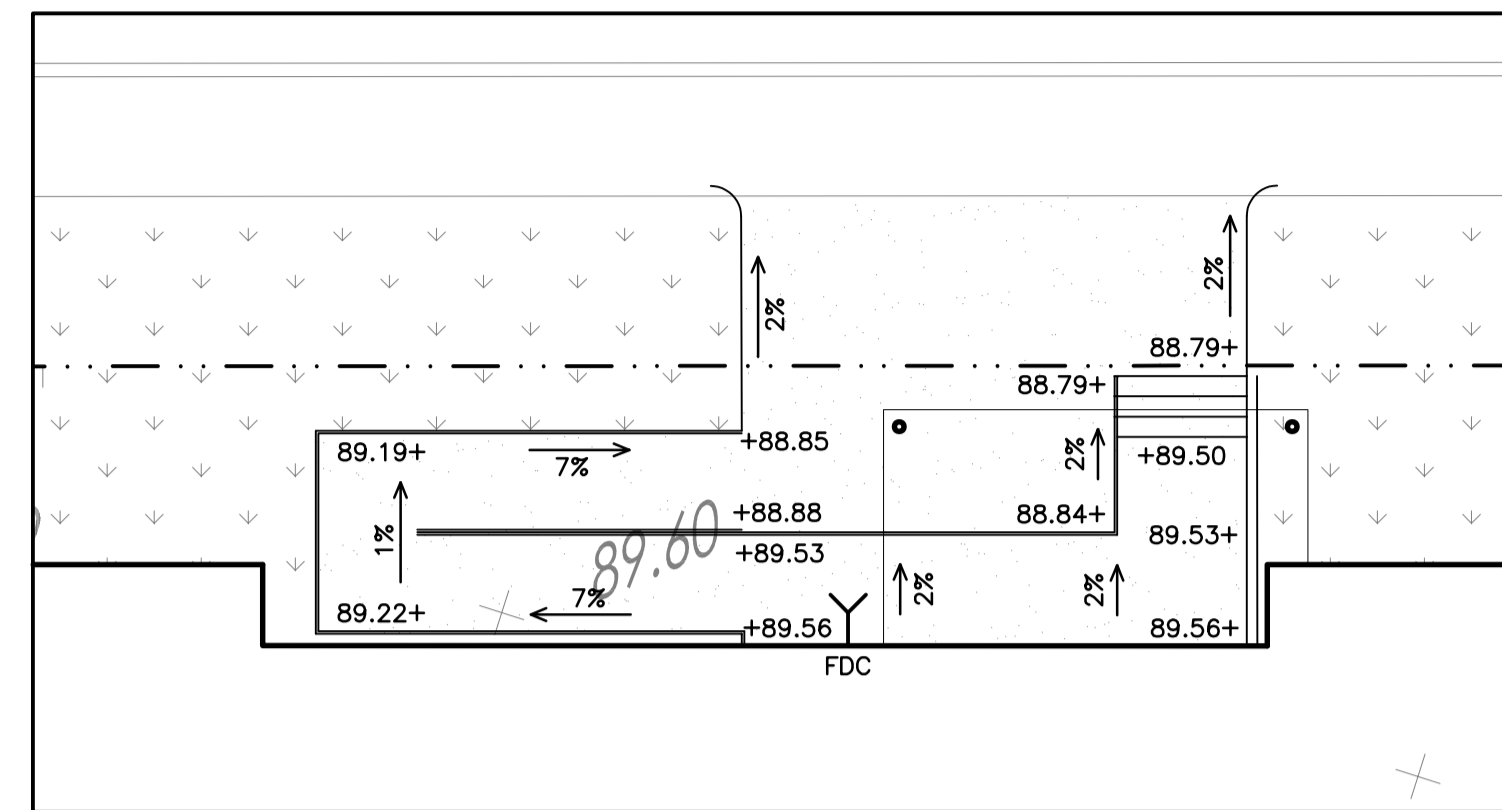


Drawn D.B.G.
 H. Scale 1:250
 V. Scale
 Date JUN 12-23
 Job No. 22068

Drawing No.
C-3
 of 6

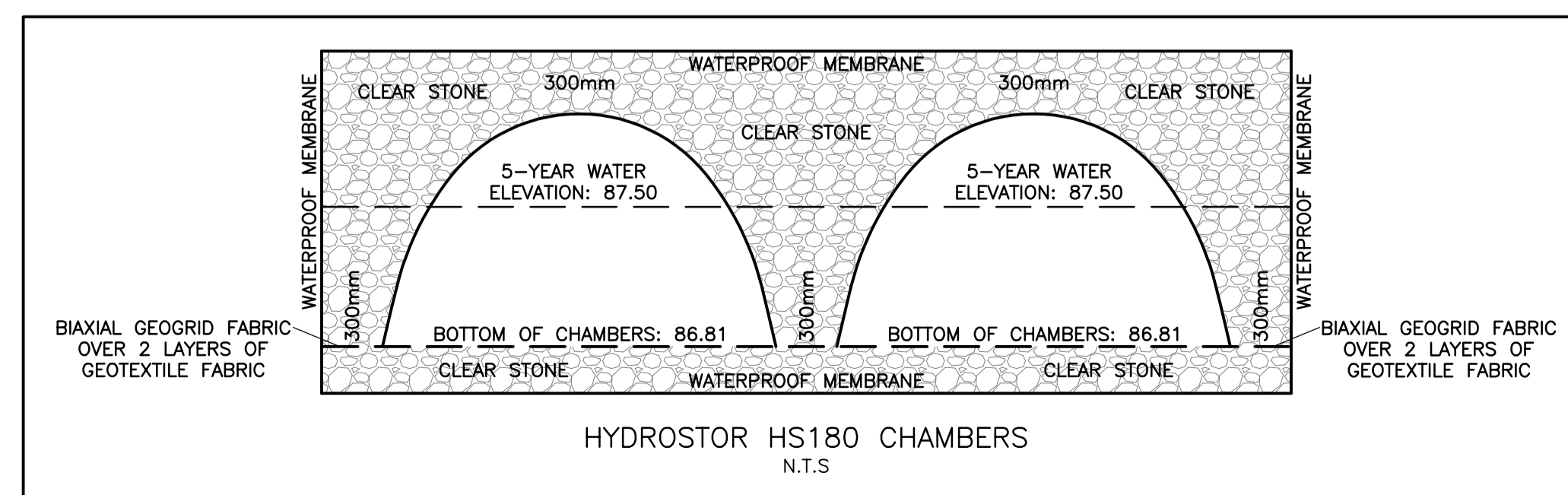
CATCH-BASIN & MANHOLE SCHEDULE

REF	TOP	SIZE	TYPE	INVERT AT INLET	INVERT AT OUTLET	NOTES
STORM SEWER						
CB-1	88.58	600mm x 600mm	PRECAST CONCRETE CATCH-BASIN	-	87.53	IN ACCORDANCE WITH OPSD 705.010 & CITY OF OTTAWA STANDARDS - FRAME & COVER IN ACCORDANCE WITH CITY OF OTTAWA DRAWING No. S19
CB-2	88.82	600mm x 600mm	PRECAST CONCRETE CATCH-BASIN	-	87.77	IN ACCORDANCE WITH OPSD 705.010 & CITY OF OTTAWA STANDARDS - FRAME & COVER IN ACCORDANCE WITH CITY OF OTTAWA DRAWING No. S19
CB-3	88.78	600mm x 600mm	PRECAST CONCRETE CATCH-BASIN	-	87.73	IN ACCORDANCE WITH OPSD 705.010 & CITY OF OTTAWA STANDARDS - FRAME & COVER IN ACCORDANCE WITH CITY OF OTTAWA DRAWING No. S19
CB-4	88.76	600mm x 600mm	PRECAST CONCRETE CATCH-BASIN	-	87.71	IN ACCORDANCE WITH OPSD 705.010 & CITY OF OTTAWA STANDARDS - FRAME & COVER IN ACCORDANCE WITH CITY OF OTTAWA DRAWING No. S19
CB-5	88.73	600mm x 600mm	PRECAST CONCRETE CATCH-BASIN	-	87.68	IN ACCORDANCE WITH OPSD 705.010 & CITY OF OTTAWA STANDARDS - FRAME & COVER IN ACCORDANCE WITH CITY OF OTTAWA DRAWING No. S19
CB-6	88.70	600mm x 600mm	PRECAST CONCRETE CATCH-BASIN	-	87.65	IN ACCORDANCE WITH OPSD 705.010 & CITY OF OTTAWA STANDARDS - FRAME & COVER IN ACCORDANCE WITH CITY OF OTTAWA DRAWING No. S19
CB-7	88.69	600mm x 600mm	PRECAST CONCRETE CATCH-BASIN	-	87.64	IN ACCORDANCE WITH OPSD 705.010 & CITY OF OTTAWA STANDARDS - FRAME & COVER IN ACCORDANCE WITH CITY OF OTTAWA DRAWING No. S19
CB-8	88.58	600mm x 600mm	PRECAST CONCRETE CATCH-BASIN	-	87.53	IN ACCORDANCE WITH OPSD 705.010 & CITY OF OTTAWA STANDARDS - FRAME & COVER IN ACCORDANCE WITH CITY OF OTTAWA DRAWING No. S19
MH-9	88.99	1200mm	PRECAST CONCRETE MANHOLE	87.52(NW)	87.52(NE)	IN ACCORDANCE WITH OPSD 701.010 & CITY OF OTTAWA STANDARDS - FRAME & COVER IN ACCORDANCE WITH CITY OF OTTAWA DRAWING No. S25 & S24.1
CB-10	88.58	600mm x 600mm	PRECAST CONCRETE CATCH-BASIN	-	87.53	IN ACCORDANCE WITH OPSD 705.010 & CITY OF OTTAWA STANDARDS - FRAME & COVER IN ACCORDANCE WITH CITY OF OTTAWA DRAWING No. S19
CB-11	88.40	600mm x 600mm	PRECAST CONCRETE CATCH-BASIN	-	87.35	IN ACCORDANCE WITH OPSD 705.010 & CITY OF OTTAWA STANDARDS - FRAME & COVER IN ACCORDANCE WITH CITY OF OTTAWA DRAWING No. S19
MH-12	88.77	1200mm	PRECAST CONCRETE MANHOLE	87.48(NE) 87.33(SW)	87.32(NW)	IN ACCORDANCE WITH OPSD 701.010 & CITY OF OTTAWA STANDARDS - FRAME & COVER IN ACCORDANCE WITH CITY OF OTTAWA DRAWING No. S25 & S24.1
CB/MH-13	88.69	1200mm	PRECAST CONCRETE CATCH-BASIN/MANHOLE	87.22(SE) 86.81(SW)	86.43(NW)	IN ACCORDANCE WITH OPSD 701.010 & CITY OF OTTAWA STANDARDS - FRAME & COVER IN ACCORDANCE WITH CITY OF OTTAWA DRAWING No. S25 & S28.1
CB-14	88.43	600mm x 600mm	PRECAST CONCRETE CATCH-BASIN	-	87.38	IN ACCORDANCE WITH OPSD 705.010 & CITY OF OTTAWA STANDARDS - FRAME & COVER IN ACCORDANCE WITH CITY OF OTTAWA DRAWING No. S19
CB/MH-15	88.63	1200mm	PRECAST CONCRETE CATCH-BASIN/MANHOLE	86.81(SW) 86.42(SE)	86.42(NW)	IN ACCORDANCE WITH OPSD 701.010 & CITY OF OTTAWA STANDARDS - FRAME & COVER IN ACCORDANCE WITH CITY OF OTTAWA DRAWING No. S25 & S28.1
CB-16	88.58	600mm x 600mm	PRECAST CONCRETE CATCH-BASIN	-	87.53	IN ACCORDANCE WITH OPSD 705.010 & CITY OF OTTAWA STANDARDS - FRAME & COVER IN ACCORDANCE WITH CITY OF OTTAWA DRAWING No. S19
CB/MH-17	88.58	1200mm	PRECAST CONCRETE CATCH-BASIN/MANHOLE	87.46(S)	87.46(NW)	IN ACCORDANCE WITH OPSD 701.010 & CITY OF OTTAWA STANDARDS - FRAME & COVER IN ACCORDANCE WITH CITY OF OTTAWA DRAWING No. S25 & S28.1
CB/MH-18	88.58	1200mm	PRECAST CONCRETE CATCH-BASIN/MANHOLE	87.39(SE)	87.39(NE)	IN ACCORDANCE WITH OPSD 701.010 & CITY OF OTTAWA STANDARDS - FRAME & COVER IN ACCORDANCE WITH CITY OF OTTAWA DRAWING No. S25 & S28.1
CB-19	88.40	600mm x 600mm	PRECAST CONCRETE CATCH-BASIN	-	87.35	IN ACCORDANCE WITH OPSD 705.010 & CITY OF OTTAWA STANDARDS - FRAME & COVER IN ACCORDANCE WITH CITY OF OTTAWA DRAWING No. S19
CB/MH-20	88.63	1200mm	PRECAST CONCRETE CATCH-BASIN/MANHOLE	87.22(SW) 86.37(SE)	86.37(NW)	IN ACCORDANCE WITH OPSD 701.010 & CITY OF OTTAWA STANDARDS - FRAME & COVER IN ACCORDANCE WITH CITY OF OTTAWA DRAWING No. S25 & S28.1
CB/MH-21	88.58	1200mm	PRECAST CONCRETE CATCH-BASIN/MANHOLE	-	87.53	IN ACCORDANCE WITH OPSD 701.010 & CITY OF OTTAWA STANDARDS - FRAME & COVER IN ACCORDANCE WITH CITY OF OTTAWA DRAWING No. S25 & S28.1
CB/MH-22	88.58	1200mm	PRECAST CONCRETE CATCH-BASIN/MANHOLE	87.30(SW)	87.30(NE)	IN ACCORDANCE WITH OPSD 701.010 & CITY OF OTTAWA STANDARDS - FRAME & COVER IN ACCORDANCE WITH CITY OF OTTAWA DRAWING No. S25 & S28.1
MH-23	88.47	1200mm	PRECAST CONCRETE MANHOLE	87.20(SW) 86.29(SE)	86.29(NE)	IN ACCORDANCE WITH OPSD 701.010 & CITY OF OTTAWA STANDARDS - FRAME & COVER IN ACCORDANCE WITH CITY OF OTTAWA DRAWING No. S25 & S24.1 ICD IN OUTLET PIPE
MH-24	88.46	CDS PMSU2015-4	PRECAST CONCRETE MANHOLE	86.04(SW)	85.80(NW)	-
SANITARY SEWER						
MH-SA.1	88.73	1200mm	PRECAST CONCRETE MANHOLE	-	86.92	IN ACCORDANCE WITH OPSD 701.010 & CITY OF OTTAWA STANDARDS - FRAME & COVER IN ACCORDANCE WITH CITY OF OTTAWA DRAWING No. S25 & S24
MH-SA.2	88.69	1200mm	PRECAST CONCRETE MANHOLE	87.48(SW) 86.62(SE)	86.61(NW)	IN ACCORDANCE WITH OPSD 701.010 & CITY OF OTTAWA STANDARDS - FRAME & COVER IN ACCORDANCE WITH CITY OF OTTAWA DRAWING No. S25 & S24



WATER SERVICE PROFILE TABLE

150mm PVC PRESSURE CLASS 235 DR18					
STATION	DESCRIPTION	GRADE ELEVATION	TOP OF PIPE	DEPTH OF COVER	NOTES
A+00.0	300mm x 150mm TEE IN 300mm MUNICIPAL WATERMAIN	±88.71	±86.21	±2.50	CONNECTION BY CITY. EXCAVATION, BACKFILL & REINSTATEMENT BY CONTRACTOR.
A+09.0	150mm VALVE BOX	88.85	86.21	2.64	ON PROPERTY LINE
A+13.4	-	89.41	86.21	3.20	ENTRY TO BUILDING
B+00.0	200mm x 150mm TEE IN 200mm MUNICIPAL WATERMAIN	±88.83	±86.29	±2.54	CONNECTION BY CITY. EXCAVATION, BACKFILL & REINSTATEMENT BY CONTRACTOR.
B+09.0	150mm VALVE BOX	88.69	86.29	2.40	ON PROPERTY LINE
B+14.8	-	89.41	86.29	3.12	ENTRY TO BUILDING



No.	DATE	REVISION
3	DEC 15-23	RE-ISSUED FOR APPROVAL
2	JUN 28-23	ISSUED FOR APPROVAL
1	JUN 26-23	ISSUED FOR COORDINATION

D. B. GRAY ENGINEERING INC.
Stormwater Management - Grading & Drainage - Storm & Sanitary Sewers - Watermain
 700 Long Point Circle
 Ottawa, Ontario
 613-425-8044
 d.gray@dbgrayengineering.com

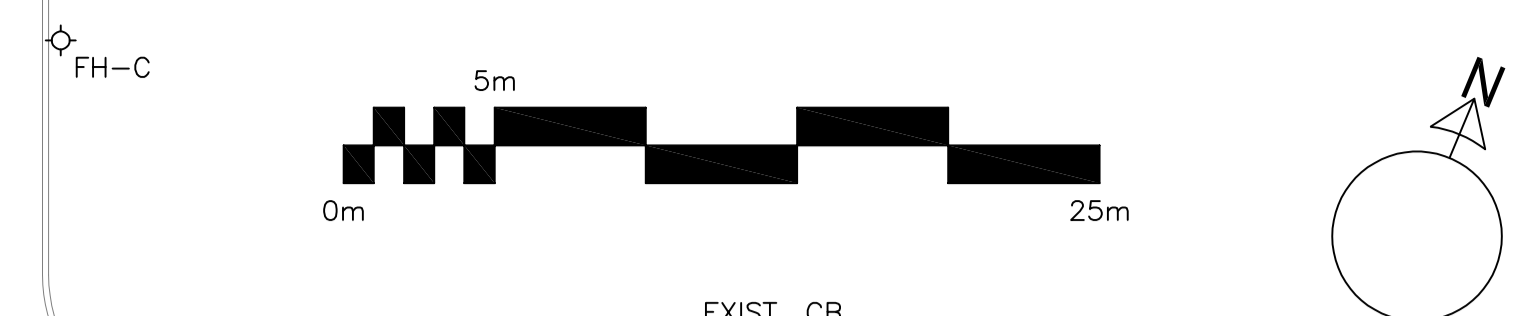
Project
PROPOSED 6-STORY APARTMENT BUILDINGS
1001 NOELLA LECLAIR WAY
 OTTAWA, ONTARIO

DETAILS & SCHEDULES

Engineer's Seal

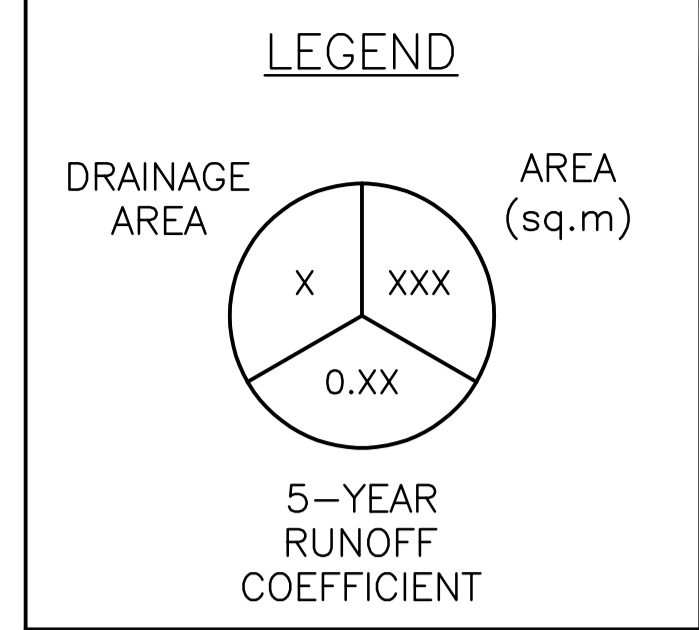
 NOT VALID UNLESS SIGNED & DATED

Drawn: D.B.G.
 H. Scale
 V. Scale
 Date: JUN 12-23
 Job No.: 22068
 Drawing No.: **C-5**
 of 6



LADY PELLATT STREET

EXIST. ST MH
TOP ±88.26



EXIST. ST MH
TOP ±88.64

EXIST. CB
TOP 88.33

EXIST. ST MH
TOP ±88.41

EXIST. SAN MH
TOP ±88.46

EXIST. CB
TOP 88.16

EXIST. SAN MH
TOP ±88.72

EXIST. CB
TOP 88.33

MH-23
TOP 88.47

EXIST. CB
TOP 88.16

EXIST. SAN MH
(±36.5m NE)
TOP ±88.31

CB/MH-21
TOP 88.58

CB/MH-22
TOP 88.58

OGS MH-24
TOP 88.46

MH-SA.2
TOP 88.69

PROPOSED 6-STORY APARTMENT BUILDING A
FFL = 89.56
BFL = 86.41
USF = 86.11

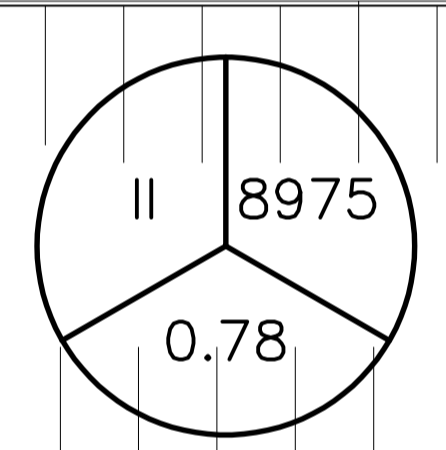
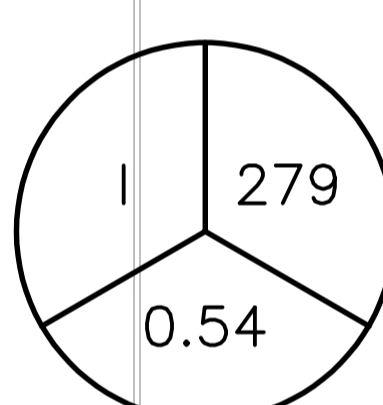
STRESS TEST POND
ELEVATION: 88.60

EXHAUST

TRANSFORMER

CB-19
TOP 88.40

NOELLA LECLAIR WAY



CB/MH-18
TOP 88.58

CB/MH-20
TOP 88.63

CB-14
TOP 88.43

STRESS TEST POND
ELEVATION: 88.60

CB/MH-15
TOP 88.63

CB/MH-13
TOP 88.69

STRESS TEST POND
ELEVATION: 88.60

CB-11
TOP 88.40

MH-SA.1
TOP 88.73

CB-10
TOP 88.58

EXIST. CB
TOP 88.31

EXIST. CB
TOP 88.31

CB/MH-17
TOP 88.58

CB-16
TOP 88.58

FDC

PROPOSED 6-STORY APARTMENT BUILDING B
FFL = 89.56
BFL = 86.41
USF = 86.11

CB-2
TOP 88.82

CB-3
TOP 88.78

CB-4
TOP 88.76

CB-5
TOP 88.73

CB-6
TOP 88.70

CB-7
TOP 88.69

CB-1
TOP 88.58

MH-9
TOP 88.99

CB-8
TOP 88.58

MH-12
TOP 88.77

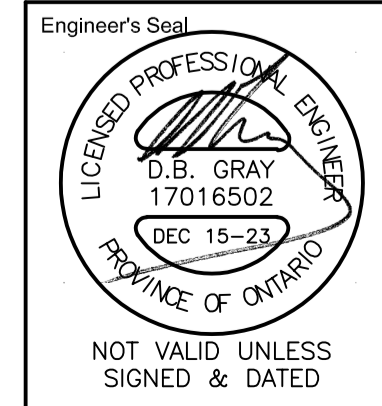
EXIST. ST MH
TOP ±88.78

No.	DATE	REVISION
3	DEC 15-23	RE-ISSUED FOR APPROVAL
2	JUN 28-23	ISSUED FOR APPROVAL
1	JUN 26-23	ISSUED FOR COORDINATION

D. B. GRAY ENGINEERING INC.
Stormwater Management - Grading & Drainage - Storm & Sanitary Sewers - Watermain
700 Long Point Circle 613-425-8044
Ottawa, Ontario d.gray@dbgrayengineering.com

Project
PROPOSED 6-STORY APARTMENT BUILDINGS
1001 NOELLA LECLAIR WAY
OTTAWA, ONTARIO

Drawing Title
DRAINAGE PLAN



Drawn D.B.G.
H. Scale 1:250
V. Scale
Date JUN 12-23
Job No. 22068

Drawing No.
C-6
of 6

#19033

#19033 D07-12-23-0095