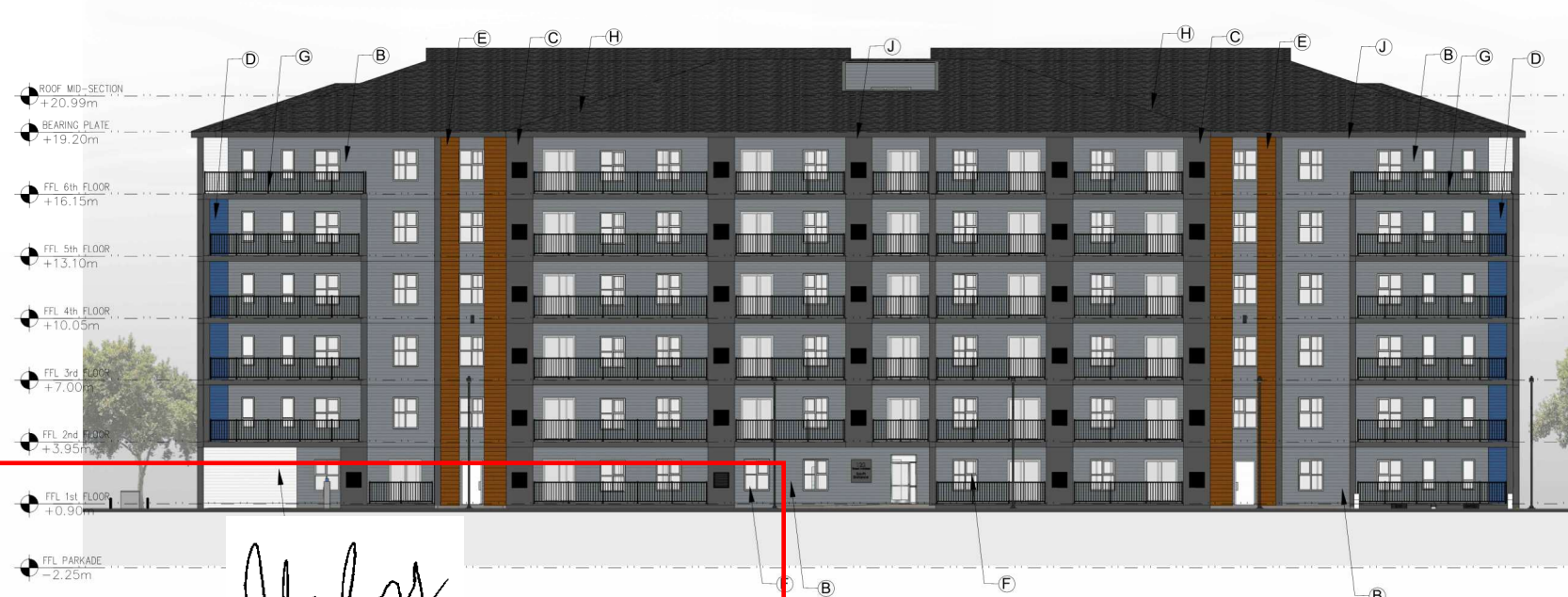


EAST ELEVATION



NORTH ELEVATION



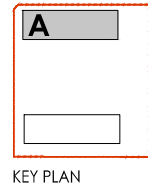
SOUTH E

*John Seigny*



WEST ELEVATION

**APPROVED**  
By sevignyjo at 10:33 am, May 24, 2024



- LEGEND**
- Ⓐ HARDIE PLANK, LAP SIDING - ARCTIC WHITE
  - Ⓑ HARDIE PLANK, LAP SIDING - NIGHT GRAY
  - Ⓒ HARDIE PANEL, SMOOTH - IRON GRAY
  - Ⓓ WESTMAN STEEL, HORIZONTAL METAL PANEL, ROYAL BLUE QC8790
  - Ⓔ HARDIE PLANK, LAP SIDING - CEDARTONE 2.0 (BY FISHER)
  - Ⓕ PVC FRAMED WINDOWS WITH CLEAR GLASS
  - Ⓖ ALUMINUM PICKET RAILING -BLACK
  - Ⓗ ASPHALT ROOF SHINGLES, MIDNIGHT BLACK
  - Ⓙ JAMES HARDIE, FASCIA AND SOFFIT - IRON GRAY

No.	Date	REVISION
6		
5		
4		
3		
2	24.01.03	Re-Submission
1	23.06.22	Submission

Project Number: 2133  
Designed By: J.P.M.  
Drawn By: D.D.  
Checked By: R.G.

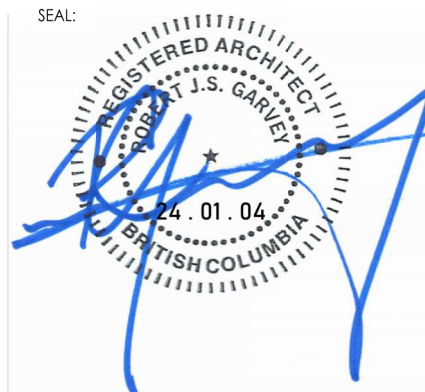
Noella Leclair Street,  
Ottawa, Ontario;

DEVELOPMENT PERMIT  
APPLICATION SET

BUILDING A- ELEVATIONS  
SCALE: 1:350

DP08

NOTES:  
**JOHN SEVIGNY C.E.T.**  
**MANAGER (A), DEVELOPMENT REVIEW EAST**  
**PLANNING, DEVELOPMENT & BUILDING SERVICES**  
**DEPARTMENT, CITY OF OTTAWA**



EAST ELEVATION



NORTH ELEVATION



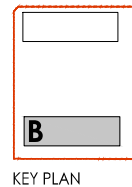
SOUTH E

*John Seigny*



WEST ELEVATION

**APPROVED**  
By sevignyjo at 10:33 am, May 24, 2024



LEGEND

- Ⓐ HARDIE PLANK, LAP SIDING - ARCTIC WHITE
- Ⓑ HARDIE PLANK, LAP SIDING - NIGHT GRAY
- Ⓒ HARDIE PANEL, SMOOTH - IRON GRAY
- Ⓓ WESTMAN STEEL, HORIZONTAL METAL PANEL, ROYAL BLUE QC8790
- Ⓔ HARDIE PLANK, LAP SIDING - CEDARTONE 2.0 (BY FISHER)
- Ⓕ PVC FRAMED WINDOWS WITH CLEAR GLASS
- Ⓖ ALUMINUM PICKET RAILING -BLACK
- Ⓗ ASPHALT ROOF SHINGLES, MIDNIGHT BLACK
- Ⓙ JAMES HARDIE, FASCIA AND SOFFIT - IRON GRAY

No.	Date	REVISION
6		
5		
4		
3		
2	24.01.03	Re-Submission
1	23.06.22	Submission

Project Number: 2133  
Designed By: J.P.M.  
Drawn By: D.D.  
Checked By: R.G.

Noella Leclair Street,  
Ottawa, Ontario;

DEVELOPMENT PERMIT  
APPLICATION SET

BUILDING B- ELEVATIONS  
SCALE: 1:350

DP09

NOTES:  
**JOHN SEVIGNY C.E.T.**  
**MANAGER (A), DEVELOPMENT REVIEW EAST**  
**PLANNING, DEVELOPMENT & BUILDING SERVICES**  
**DEPARTMENT, CITY OF OTTAWA**