

APPROVED UNDER SECTION 37 OF THE PLANNING ACT BY THE CITY OF OTTAWA
ON THE 27th DAY OF April 2009

PLAN 4M-1383
I CERTIFY THAT THIS PLAN IS REGISTERED IN THE LAND REGISTRY OFFICE FOR THE LAND TITLES DIVISION OF OTTAWA-CARLETON NO. 4 AND IS EFFECTIVE ON THE 27th DAY OF April 2009 AND ENTERED IN THE REGISTER BOOK PROPERTY IDENTIFIERS 0474-0398, 0478-0053, 0478-0058, 0478-0060, 0478-0066 AND PART OF PIN 0478-0022 AND THE REQUIRED CONSENTS ARE REGISTERED AS PLAN DOCUMENT NO. 0478-4044

Edna M. Vollebek
LAND REGISTAR

This plan comprises all of the land identified by PINs 0474-0398, 0478-0053, 0478-0058, 0478-0060, 0478-0066, 0478-0067, 0478-0069 and part of PIN 0478-0022.

PLAN OF SUBDIVISION OF PART OF LOTS 30 AND 31 And PART OF THE ROAD ALLOWANCE BETWEEN LOTS 30 AND 31
(As Closed by By-Law 44-99, Inst. M599928)
CONCESSION 10
Geographic Township of Goulbourn
CITY OF OTTAWA
Surveyed by **Annis, O'Sullivan, Vollebek Ltd.**

Scale 1:1000

Metric DISTANCES SHOWN ON THIS PLAN ARE IN METRES AND CAN BE CONVERTED TO FEET BY DIVIDING BY 0.3048

SURVEYOR'S CERTIFICATE
I CERTIFY THAT:
1. This survey and plan are correct and in accordance with the Survey Act, the Surveyors Act, the Land Titles Act and the regulations made under them.
2. The survey was completed on the 6th day of March, 2009.

M. S. Vollebek
M. S. Vollebek
Ontario Land Surveyor

OWNER'S CERTIFICATE
THIS IS TO CERTIFY THAT:
1. Blocks 1 to 72 (both inclusive), Blocks 74 to 80 (both inclusive), Blocks 82 to 101 (both inclusive), Blocks 103 to 122 (both inclusive), Blocks 124 to 126, 128, 129, 130, 131, part of Block 73, Block 81, 102, the 0.30 Reserve namely Blocks 127 and 128 and the Reserve namely Block 133, the Street Widdings Circle, Herby Way, Northgraves Crescent, Pepperville Crescent, Regiment Avenue, Sennock Avenue, Tabaret Street, Westwind Way, Westhill Way, Westpark Avenue, Westpark Avenue, Westpark Avenue, Westhill Way, Westpark Avenue, part of Akerston Road and part of Cope Drive have been laid out in accordance with my instruments.
2. The Street Widdings Circle, Herby Way, Northgraves Crescent, Pepperville Crescent, Regiment Avenue, Sennock Avenue, Tabaret Street, Westwind Way, Westhill Way, Westpark Avenue, part of Akerston Road and part of Cope Drive are hereby dedicated to the City of Ottawa as public highway.

APRIL 29, 2009
Brian Katz
Brian Katz (Authorized Signing Officer)
1200374 Ontario Ltd.
I have the authority to bind the corporation.

OWNER'S CERTIFICATE
THIS IS TO CERTIFY THAT:
1. Part of Blocks 73, 81, 102, the 0.30 Reserve namely Block 132, part of the 0.30 Reserve namely part of Block 131 and part of the Streets namely part of Akerston Road and part of Cope Drive have been laid out in accordance with my instruments.
2. Part of the Street namely part of Akerston Road and part of Cope Drive are hereby dedicated to the City of Ottawa as public highway.

APRIL 29, 2009
Laura O'Brien
Laura O'Brien, Mayor
City of Ottawa
I have the authority to bind the corporation.

APRIL 29, 2009
David Downey
David Downey, Deputy City Clerk
City of Ottawa
I have the authority to bind the corporation.

NOTES AND LEGEND

—	Survey Monument	Point
—	Survey Monument	Fouling
SB	Standard Iron Bar	
Cut	Cut	
CC	Cut	
IR	Iron Bar	
Meas.	Measured	
Accd.	Accepted	
NT	Not Terminate	
Area	Area	
(P1)	Plan 4R-1934	
(P2)	Plan 4R-1936	
(P3)	Plan 4R-1937	
(P4)	Plan 4R-1940	
(P5)	Plan 4R-1942	
(P6)	Plan 4R-2012	
(P7)	Plan 4R-2041	

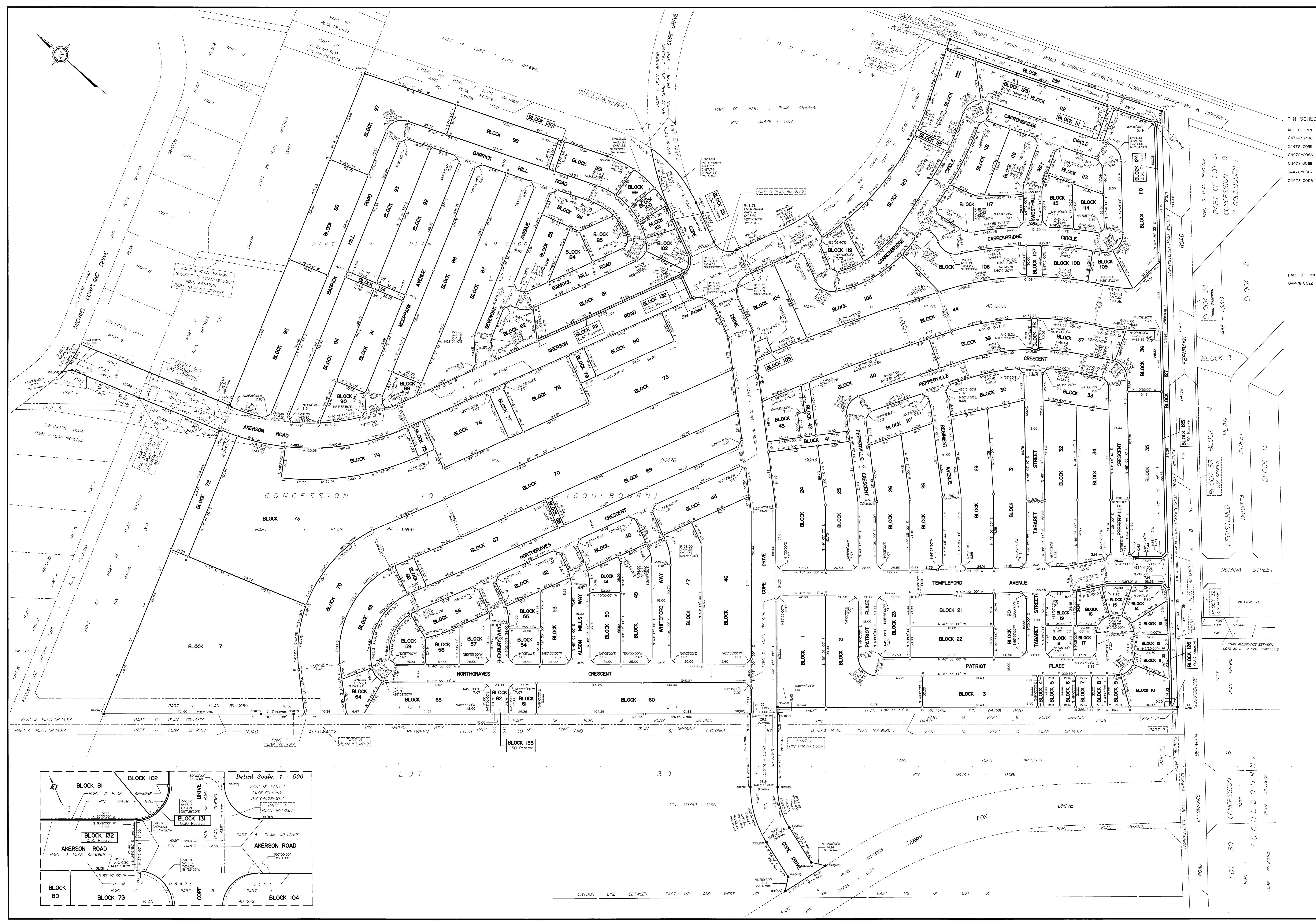
Distances shown on curved limits are Arc distances unless otherwise noted. All plotted survey monuments are SBB's unless otherwise noted.

Bearings are grid bearings, derived from the northerly line of Plan 4R-6966, shown in Plan P1118'00"E of Enplan.

CURVE SCHEDULE

N/R/L	LOCATION	RADIUS	ARC	CHORD	BEARING
C1	HENRY WAY	30.00	15.23	15.12	N 90° 57' 57" E
C2	HENRY WAY	58.00	28.55	28.37	N 30° 57' 57" E
C3	ALMON MILLS WAY	38.00	19.24	19.12	N 30° 57' 57" E
C4	ALMON MILLS WAY	24.55	12.45	12.37	N 30° 57' 57" E
C5	BARROCK HILL ROAD	18.00	14.60	14.20	N 1° 05' 57" W
C6	BLOCK 9	18.00	4.91	4.90	N 68° 44' 30" E
C7	BLOCK 10	18.00	11.31	11.83	N 1° 05' 57" W
C8	BLOCK 11	18.00	7.43	7.38	N 69° 29' 42" E
C9	BLOCK 12	18.00	9.71	9.60	N 59° 12' 30" E
C10	BLOCK 13	18.00	11.34	11.83	N 1° 05' 57" W
C11	BLOCK 14	18.00	11.31	11.83	N 1° 05' 57" W
C12	BLOCK 15	18.00	11.36	11.37	N 3° 20' 42" E
C13	BLOCK 16	18.00	15.19	14.75	N 81° 38' 30" E
C14	BLOCK 17	18.00	8.24	8.17	N 68° 44' 30" E
C15	BLOCK 48	58.00	8.64	8.63	N 2° 30' 57" E
C16	BLOCK 51	58.00	15.91	15.87	N 41° 13' 30" E
C17	BLOCK 52	58.00	9.91	9.90	N 30° 57' 57" E
C18	BLOCK 52	58.00	7.38	7.38	N 28° 28' 42" E
C19	BLOCK 53	58.00	8.32	8.31	N 42° 27' 30" E
C20	BLOCK 55	58.00	19.11	18.67	N 1° 05' 57" E
C21	BLOCK 59	36.00	5.30	5.30	N 2° 30' 57" E
C22	BLOCK 59	36.00	9.83	9.80	N 41° 13' 30" E
C23	BLOCK 64	63.12	3.34	3.34	N 30° 14' 57" E
C24	BLOCK 66	63.12	2.90	2.89	N 69° 12' 10" W
C25	BLOCK 89	72.60	16.41	16.36	N 1° 18' 30" E
C26	BLOCK 89	103.63	27.90	28.03	N 1° 05' 57" W
C27	BLOCK 100	103.63	20.17	20.13	N 14° 20' 42" E
C28	BLOCK 101	72.60	19.11	18.67	N 30° 29' 42" E
C29	BLOCK 101	103.63	9.34	9.34	N 27° 19' 42" E
C30	BLOCK 102	154.50	9.05	8.94	N 5° 19' 00" E
C31	BLOCK 103	1664.54	16.94	16.94	N 8° 51' 30" W
C32	BLOCK 109	324.25	27.8	27.8	N 30° 57' 57" W
C33	BLOCK 109	18.00	15.91	15.79	N 48° 52' 30" W
C34	BLOCK 109	18.00	5.54	5.54	N 81° 41' 30" E
C35	BLOCK 131	103.63	9.38	9.38	N 22° 18' 42" E

ANNIS, O'SULLIVAN, VOLLEBEK LTD.
14 Concession Gate, Suite 500
Newport, Ont. N6E 2S9
Phone: (613) 727-0850 / Fax: (613) 727-1079
Email: hansen@annissol.com



PIN SCHEDULE

ALL OF PIN DESCRIPTION

0474-0398 Part of Cope Drive
0478-0059 Part of Cope Drive
0478-0066 Part of Akerston Road
0478-0069 Part of Akerston Road
0478-0067 Part of Akerston Road
0478-0053 Blocks 1 to 72 (both inclusive), Blocks 74 to 80 (both inclusive), Blocks 82 to 101 (both inclusive), Blocks 103 to 122 (both inclusive), Blocks 124 to 126, 128, 129, 130, 131, part of Block 73, Block 81, 102, the Reserve, Blocks 127, 128, 129, 130, 131 and part of the Reserve, Block 131, the Street Widdings Circle, Herby Way, Northgraves Crescent, Pepperville Crescent, Regiment Avenue, Sennock Avenue, Tabaret Street, Westwind Way, Westhill Way, Westpark Avenue and part of Akerston Road and part of Cope Drive.

0478-0022 Part of Blocks 73, 81 and 102, the Reserve Block 132, Part of the Reserve Block 131, Part of Akerston Road and part of Cope Drive

REGISTERED PLAN

CONCESSION 10 (GOULBOURN)

LOT 30 AND 31

ROAD ALLOWANCE BETWEEN LOTS 30 & 31 NOT TRAVELLED

REGISTERED PLAN

CONCESSION 9 (GOULBOURN)