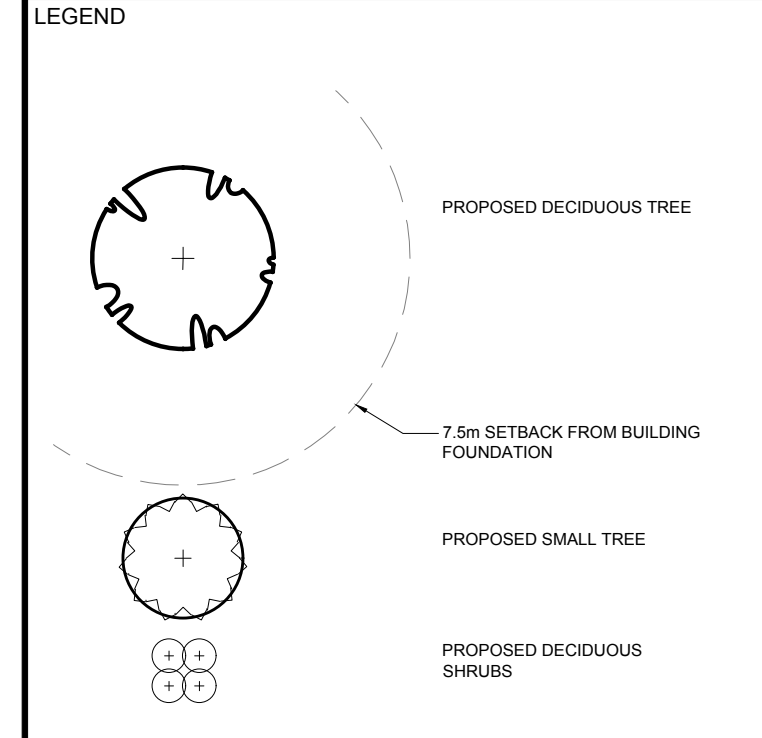


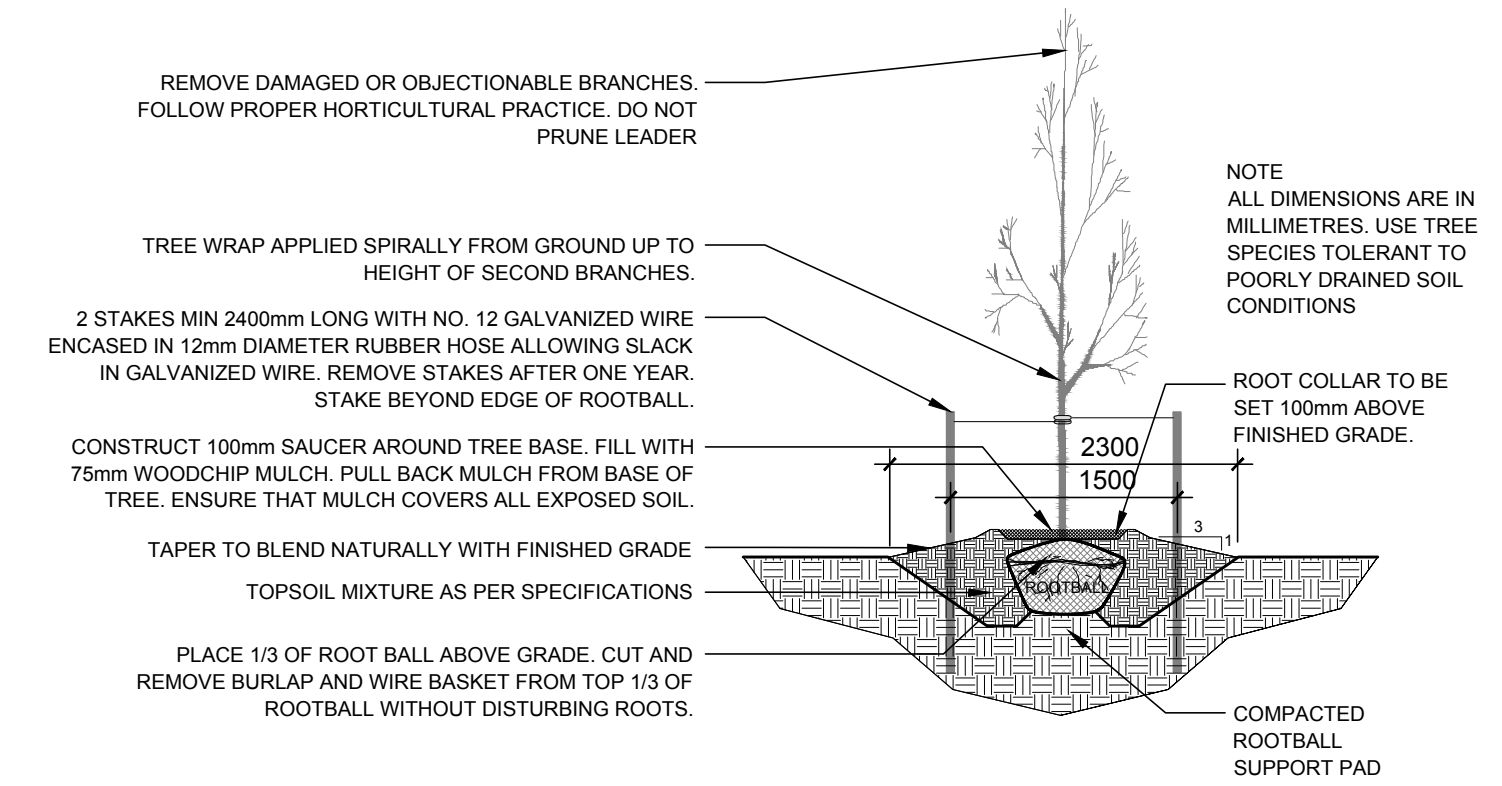
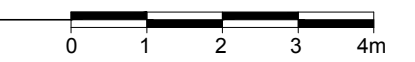
CLIENT  
**CAVANAGH DEVELOPMENTS**

CONSULTANTS  
 ARCHITECTS: M. David Blakely Architect Inc.  
 2200 Prince of Wales Dr. - Suite 101, Ottawa, ON K2E 6Z9  
 Tel: (613) 228-8811  
 CIVIL ENGINEERS: Stentec Consulting Ltd.  
 450-1311 Oryx Avenue, Ottawa, ON  
 Tel: (613) 722-4420

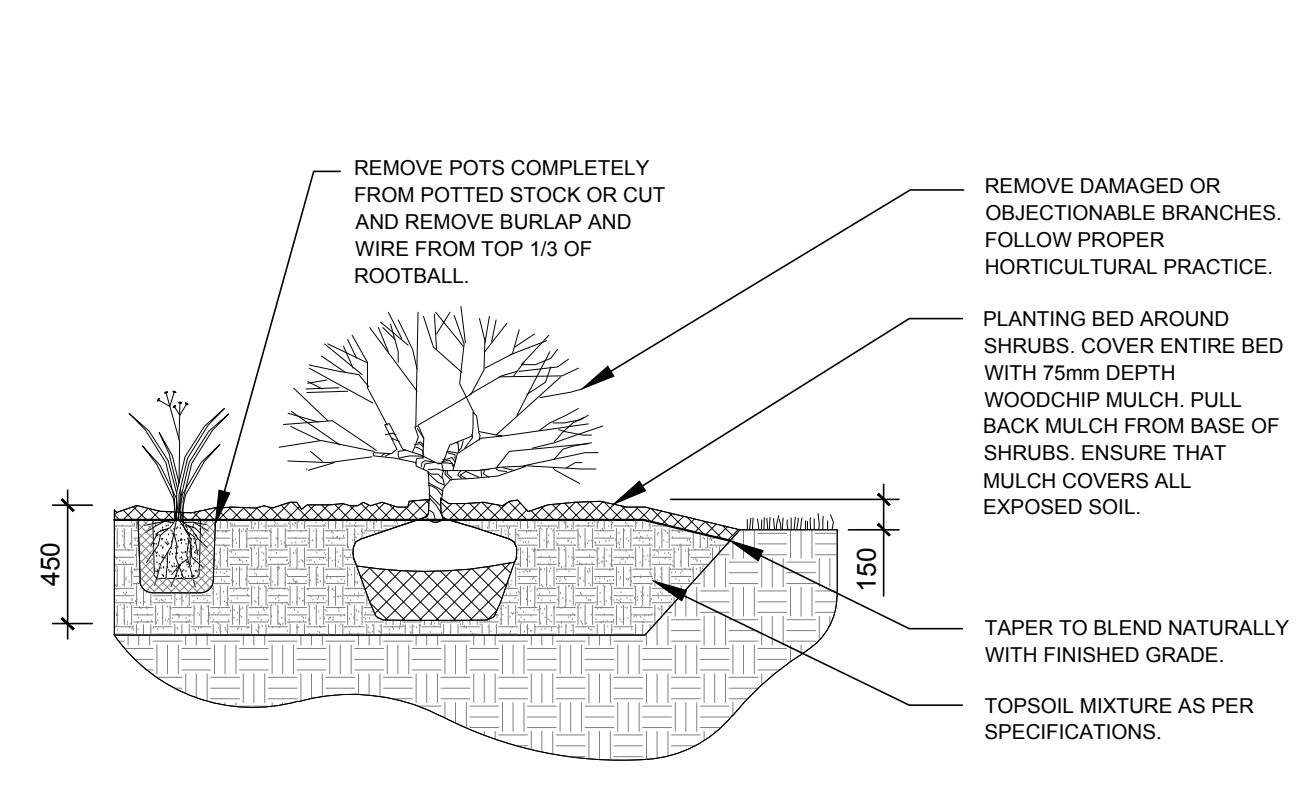


No.	Issue	Date	DR	CK
1	ISSUED FOR SITE PLAN CONTROL	06/28/2023	LC	JL

1 LANDSCAPE PLAN  
 L.1 SCALE 1:150



2 DECIDUOUS TREE PLANTING  
 L.1 N.T.S.



3 SHRUB AND PERENNIAL PLANTING  
 L.1 N.T.S.

PROPOSED PLANT LIST

KEY	QTY	BOTANICAL NAME	COMMON NAME	SIZE	CONDITION	SPACING
<b>DECIDUOUS TREES</b>						
AM	2	<i>Acer ginnata</i>	Amur Maple	60mm dia.	B&B	
CA	3	<i>Cornus alternifolia</i>	Alternateleaf Dogwood	2000mm ht.	Stringball	
HB	2	<i>Celtis occidentalis</i>	Hackberry	60mm dia.	B&B	
HL	2	<i>Gleditsia triacanthos</i> 'Skyline'	Skyline Honey Locust	60mm dia.	B&B	
JL	1	<i>Syringa reticulata</i>	Japanese Tree Lilac	60mm dia.	B&B	
LL	4	<i>Syringa meyeri</i> 'Palibin'	Dwarf Korean Lilac	Tree Form	B&B	
RM	2	<i>Acer rubrum</i>	Red Maple	60mm dia.	B&B	
SB	2	<i>Amelanchier canadensis</i>	Shadblow Serviceberry	60mm dia.	B&B	
SV	5	<i>Syringa vulgaris</i> 'Charles Joly'	Charles Joly Lilac	2000mm ht.	Stringball	
<b>SHRUBS, ORNAMENTAL GRASSES AND PERENNIALS</b>						
GS	18	<i>Spiraea x arguta</i>	Garland Spirea	800mm spr.	Potted	1000 mm o.c.
HY	11	<i>Hydrangea arborescens</i> 'Annabelle'	Annabelle Hydrangea	3 gal. pot.	Potted	800 mm o.c.
NB	19	<i>Physocarpus opulifolius</i> 'Little Devil'	Little Devil Ninebark	600mm pot.	Potted	1000 mm o.c.
PP	11	<i>Spiraea japonica</i> 'Little Princess'	Little Princess Spirea	600mm pot.	Potted	800 mm o.c.

GENERAL NOTES:

- IT IS THE RESPONSIBILITY OF THE APPROPRIATE CONTRACTOR OR OFFICIAL TO REPORT ANY ERRORS, OMISSIONS OR DISCREPANCIES ON THIS PLAN WITH ACTUAL SITE CONDITIONS TO THE LANDSCAPE ARCHITECT BEFORE PROCEEDING WITH CONSTRUCTION.
- THE CONTRACTOR IS TO NOTIFY ALL UTILITY COMPANIES AND AUTHORITIES PRIOR TO ANY EXCAVATION AND ASCERTAIN LOCATIONS OF UNDERGROUND SERVICES.
- THE CONTRACTOR IS TO REINSTATE ALL AREAS AND ITEMS DAMAGED AS A RESULT OF CONSTRUCTION ACTIVITY.
- THE CONTRACTOR IS TO COMPLY WITH ALL PERTINENT CODES AND BY-LAWS.
- THE CONTRACTOR IS TO MAINTAIN A POSITIVE SURFACE RUN-OFF THROUGHOUT THE ENTIRE CONSTRUCTION PERIOD.
- THE LANDSCAPE ARCHITECT IS NOT RESPONSIBLE FOR SUBSURFACE CONDITIONS.
- THE CONTRACTOR IS TO IDENTIFY ALL EXISTING TREES TO REMAIN ON SITE WITH THE LANDSCAPE ARCHITECT PRIOR TO CONSTRUCTION.
- THE CONTRACTOR IS TO STAKE THE PROPOSED LOCATION OF ALL PLANT MATERIAL IN CONJUNCTION WITH THE LANDSCAPE ARCHITECT PRIOR TO EXCAVATION.
- MINIMUM DISTANCES FOR SELECTED DECIDUOUS TREES ARE AS FOLLOWS:
  - BUILDING FOUNDATIONS - 7.5M
  - SIDEWALKS - 1.5M
  - PUBLIC STREETS - 2.5M
  - UNDERGROUND INFRASTRUCTURE - 2.0M
- ALL TREES WITHIN 1M OF UNDERGROUND UTILITY TRENCHES ARE TO BE EXCAVATED BY HAND.
- REMOVE ALL PROTECTIVE WRAPPING FROM TREE TRUNKS AFTER INSTALLATION.
- STAKING OF TREES SHALL ONLY BE PERFORMED IF NECESSARY.
- ENSURE THAT MULCH IS PULLED BACK A MINIMUM DISTANCE OF 75MM FROM BASE OF TREE TRUNK.

JAMES B. LENNOX & ASSOCIATES INC.  
 LANDSCAPE ARCHITECTS  
 3332 CARLING AVE. OTTAWA, ONTARIO K2H 5A8  
 Tel: (613) 722-5168 Fax: (866) 343-3942

PROJECT  
 151 COPE DRIVE  
 BLOCK 46  
 OTTAWA, ONTARIO

DRAWING  
 LANDSCAPE PLAN

SCALE  
 AS SHOWN  
 START DATE  
 NOVEMBER, 2022  
 PROJECT NO.  
 23-MIS-2314

DRAWING NO.  
**L.1**  
 PLOT SIZE ARCH-D

