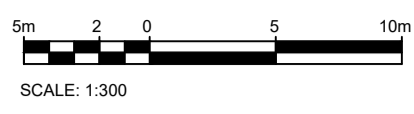


G. Wildman

GERALDINE WILDMAN
 ACTING MANAGER, DEVELOPMENT REVIEW, EAST
 PLANNING, REAL ESTATE & ECONOMIC DEVELOPMENT
 DEPARTMENT, CITY OF OTTAWA

APPROVED
 By Geraldine Wildman at 6:51 pm, Mar 21, 2024



- 6 0 2024/01/17 ISSUED FOR SITE PLAN CONTROL
- 5 0 2023/11/24 ISSUED FOR SITE PLAN CONTROL
- 4 0 2023/11/17 ISSUED FOR COORDINATION
- 3 0 2023/09/28 ISSUED FOR BUILDING PERMIT
- 2 0 2023/09/21 ISSUED FOR SITE PLAN CONTROL

ISSUE NO. REV. DATE ISSUE

LES IDÉES, CONCEPTS, DISPOSITIONS ET PLANS MONTRÉS OU REPRÉSENTÉS PAR CE DESSIN APPARTIENNENT À EDWARD J. CUHACI AND ASSOCIATES ARCHITECTS INC. ET ONT ÉTÉ CRÉÉS, DÉVELOPPÉS POUR ÊTRE UTILISÉS DANS LE CADRE DU PRÉSENT PROJET. ILS NE DOIVENT PAS ÊTRE UTILISÉS À D'AUTRES FINS NI COMMUNIQUÉS À QUI QUE CE SOIT SANS LA PERMISSION ÉCRITE DE EDWARD J. CUHACI AND ASSOCIATES ARCHITECTS INC.

L'ARCHITECTE DÉCLINE TOUTE RESPONSABILITÉ DÉCOULANT DE PROBLÈMES FAISANT SUITE AU NON RESPECT DES PLANS ET DEVIS OU DE L'INTENTION DU CONCEPT QU'ILS TRANSMETTENT, OU DE TOUTS PROBLÈMES POUVANT RÉSULTER DU DÉFAUT DE TIERS D'OBTENIR OU DE SUIVRE LES INSTRUCTIONS DE L'ARCHITECTE RELATIVEMENT AUX ERREURS, OMISSIONS, INCOHÉRENCES, AMBIGUITÉS OU CONTRADICTIONS ALLEGUÉS.

L'ENTREPRENEUR DOIT VÉRIFIER TOUTES LES DIMENSIONS SUR PLACE ET INFORMER L'ARCHITECTE DE TOUT ÉCART AVANT LE DÉBUT DES TRAVAUX. NE PAS MESURER LES DESSINS À L'ÉCHELLE.

ALL IDEAS, DESIGNS, ARRANGEMENTS, AND PLANS INDICATED OR REPRESENTED BY THIS DRAWING ARE OWNED BY AND THE PROPERTY OF EDWARD J. CUHACI AND ASSOCIATES INC. AND WERE CREATED, EVOLVED, AND DEVELOPED FOR USE ON AND IN CONNECTION WITH THE SPECIFIED PROJECT. NONE OF THE IDEAS, DESIGNS, ARRANGEMENTS OR PLANS SHALL BE USED OR DISCLOSED TO ANY PERSON, FIRM, OR CORPORATION FOR ANY PURPOSE WHATSOEVER WITHOUT THE WRITTEN PERMISSION OF EDWARD J. CUHACI AND ASSOCIATES INC.

THE ARCHITECT WAIVES ANY AND ALL RESPONSIBILITY AND LIABILITY FOR PROBLEMS WHICH ARISE FROM FAILURE TO FOLLOW THESE PLANS, SPECIFICATIONS, AND THE DESIGN INTENT THEY CONVEY, OR FOR PROBLEMS WHICH ARISE FROM OTHERS' FAILURE TO OBTAIN AND/OR FOLLOW THE ARCHITECT'S GUIDANCE WITH RESPECT TO ANY ERRORS, OMISSIONS, INCONSISTENCIES, AMBIGUITIES OR CONFLICTS WHICH ARE ALLEGED.

CONTRACTOR TO VERIFY ALL DIMENSIONS AND NOTIFY THE ARCHITECT OF ANY DISCREPANCIES BEFORE WORK COMMENCES. DO NOT SCALE DRAWINGS

TRUE NORTH

PLAN NORTH

EDWARD J. CUHACI & ASSOCIATES ARCHITECTS Inc.
 171 Slater St, Suite 100, Ottawa, Ontario, K1P 5H7
 Fax: (613) 236-1944 Telephone: (613) 236-7135 E-mail: info@cuhaci.com

PROJECT TITLE/TITRE DU PROJET
ÉCOLE ÉLÉMENTAIRE PUBLIQUE ORLÉANS SUD
 675 MONARDIE WAY
 OTTAWA, ONTARIO

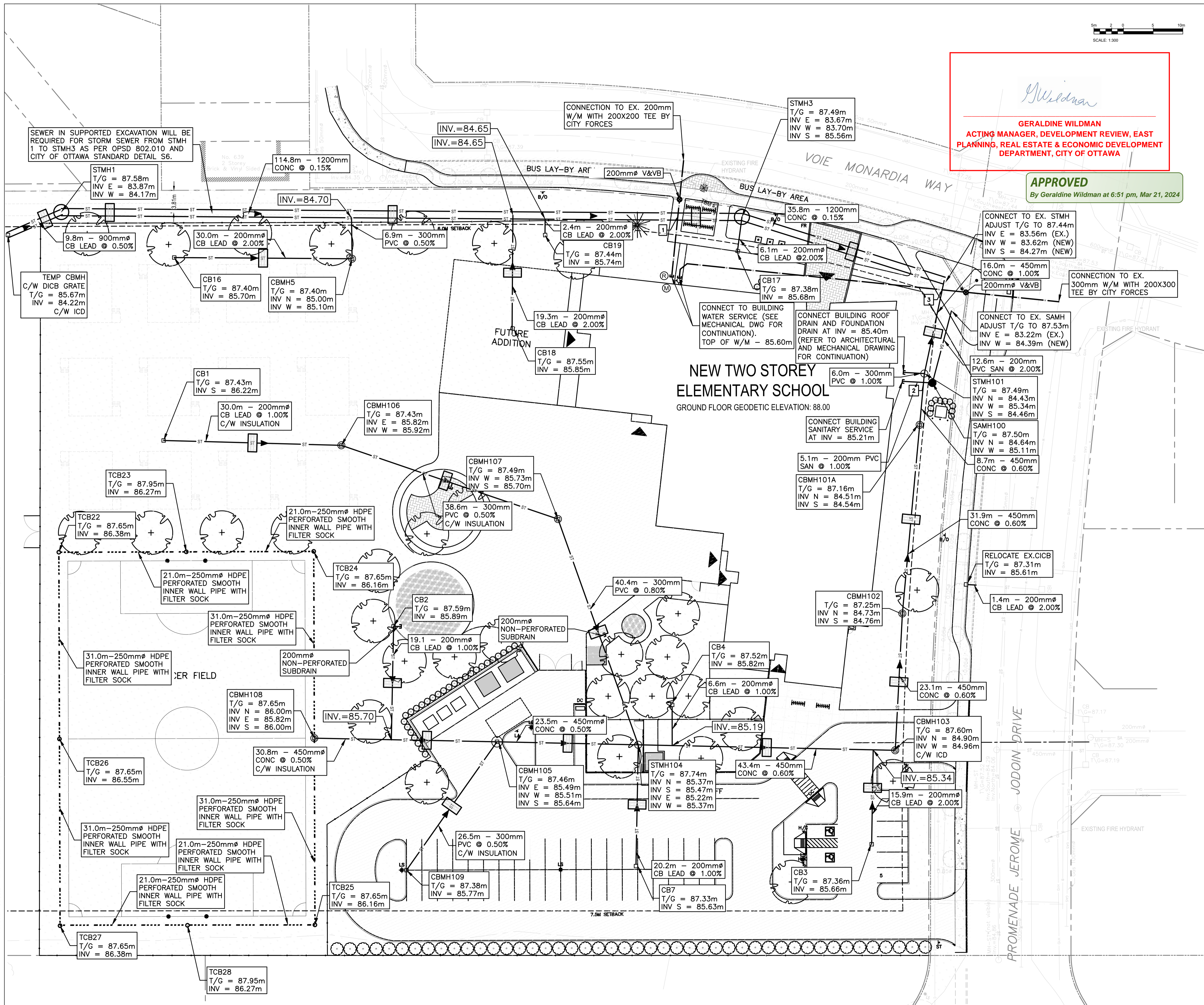
CONSEIL DES ÉCOLES PUBLIQUES DE L'EST DE L'ONTARIO
 2445 BOUL. ST-LAURENT, OTTAWA, ON

DRAWING TITLE/TITRE DU DESSIN
GRADING PLAN

SCALE ECHELLE	1:300	PROJ. No. 0003850-9668	ISSUE No. 6	REV. No. 0
DRAWN BY DESSINÉ PAR	ST-RVT	DRAWING/DESSIN		
CHECKED BY VÉRIFIÉ PAR	DY	C03		
DATE	JANUARY 2024	ACAD FILE/FICHER: 0003850-9668 C01-8.dwg		

D07-12-23-0102

#####



G. Wildman

GERALDINE WILDMAN
 ACTING MANAGER, DEVELOPMENT REVIEW, EAST
 PLANNING, REAL ESTATE & ECONOMIC DEVELOPMENT
 DEPARTMENT, CITY OF OTTAWA

APPROVED
 By Geraldine Wildman at 6:51 pm, Mar 21, 2024

**NEW TWO STOREY
 ELEMENTARY SCHOOL**
 GROUND FLOOR GEODETIC ELEVATION: 88.00



- 6 0 2024/01/17 ISSUED FOR SITE PLAN CONTROL
- 5 0 2023/11/24 ISSUED FOR SITE PLAN CONTROL
- 4 0 2023/11/17 ISSUED FOR COORDINATION
- 3 0 2023/09/28 ISSUED FOR BUILDING PERMIT
- 2 0 2023/09/21 ISSUED FOR SITE PLAN CONTROL

LES IDEES, CONCEPTS, DISPOSITIONS ET PLANS MONTRES OU REPRESENTES PAR CE DESSIN APPARTIENNENT A EDWARD J. CUHACI AND ASSOCIATES ARCHITECTS INC. ET ONT ETE CREEES, ET DEVELOPPEES POUR ETRE UTILISEES DANS LE CADRE DU PRESENT PROJET. ILS NE DOIVENT PAS ETRE UTILISES A D'AUTRES FINS NI COMMUNIQUEES A QUI QUE CE SOIT SANS LA PERMISSION ECRITE DE EDWARD J. CUHACI AND ASSOCIATES ARCHITECTS INC.

L'ARCHITECTE DECLINE TOUTE RESPONSABILITE DECOULANT DE PROBLEMES FAISANT SUITE AU NON RESPECT DES PLANS ET DEVIS OU DE L'INTENTION DU CONCEPT QU'ILS TRANSMETTENT, OU DE TOUTS PROBLEMES POUVANT RESULTER DU DEFAUT DE TIERS D'OBTENIR OU DE SUIVRE LES INSTRUCTIONS DE L'ARCHITECTE RELATIVEMENT AUX ERREURS, OMISSIONS, INCOHERENCES, AMBIGUITES OU CONTRADICTIONS ALLEGUES.

L'ENTREPRENEUR DOIT VERIFIER TOUTES LES DIMENSIONS SUR PLACE ET INFORMER L'ARCHITECTE DE TOUT ECART AVANT LE DEBUT DES TRAVAUX. NE PAS MESURER LES DESSINS A L'ECHELLE.

ALL IDEAS, DESIGNS, ARRANGEMENTS, AND PLANS INDICATED OR REPRESENTED BY THIS DRAWING ARE OWNED BY AND THE PROPERTY OF EDWARD J. CUHACI AND ASSOCIATES INC. AND WERE CREATED, EVOLVED, AND DEVELOPED FOR USE ON AND IN CONNECTION WITH THE SPECIFIED PROJECT. NONE OF THE IDEAS, DESIGNS, ARRANGEMENTS OR PLANS SHALL BE USED BY OR DISCLOSED TO ANY PERSON, FIRM, OR CORPORATION FOR ANY PURPOSE WHATSOEVER WITHOUT THE WRITTEN PERMISSION OF EDWARD J. CUHACI AND ASSOCIATES INC.

THE ARCHITECT WAIVES ANY AND ALL RESPONSIBILITY AND LIABILITY FOR PROBLEMS WHICH ARISE FROM FAILURE TO FOLLOW THESE PLANS, SPECIFICATIONS, AND THE DESIGN INTENT THEY CONVEY, OR FOR PROBLEMS WHICH ARISE FROM OTHERS' FAILURE TO OBTAIN AND/OR FOLLOW THE ARCHITECT'S GUIDANCE WITH RESPECT TO ANY ERRORS, OMISSIONS, INCONSISTENCIES, AMBIGUITIES OR CONFLICTS WHICH ARE ALLEGED.

CONTRACTOR TO VERIFY ALL DIMENSIONS AND NOTIFY THE ARCHITECT OF ANY DISCREPANCIES BEFORE WORK COMMENCES. DO NOT SCALE DRAWINGS

TRUE NORTH PLAN NORTH

EDWARD J. CUHACI & ASSOCIATES ARCHITECTS Inc.
 171 Slater St, Suite 100, Ottawa, Ontario, K1P 5H7
 Fax: (613) 236-1944 Telephone: (613) 236-7135 E-mail: info@cuhaci.com

PROJECT TITLE/TITRE DU PROJET
ÉCOLE ÉLÉMENTAIRE PUBLIQUE ORLÉANS SUD
 675 MONARDIE WAY
 OTTAWA, ONTARIO

CONSEIL DES ÉCOLES PUBLIQUES DE L'EST DE L'ONTARIO
 2445 BOUL. ST-LAURENT, OTTAWA, ON

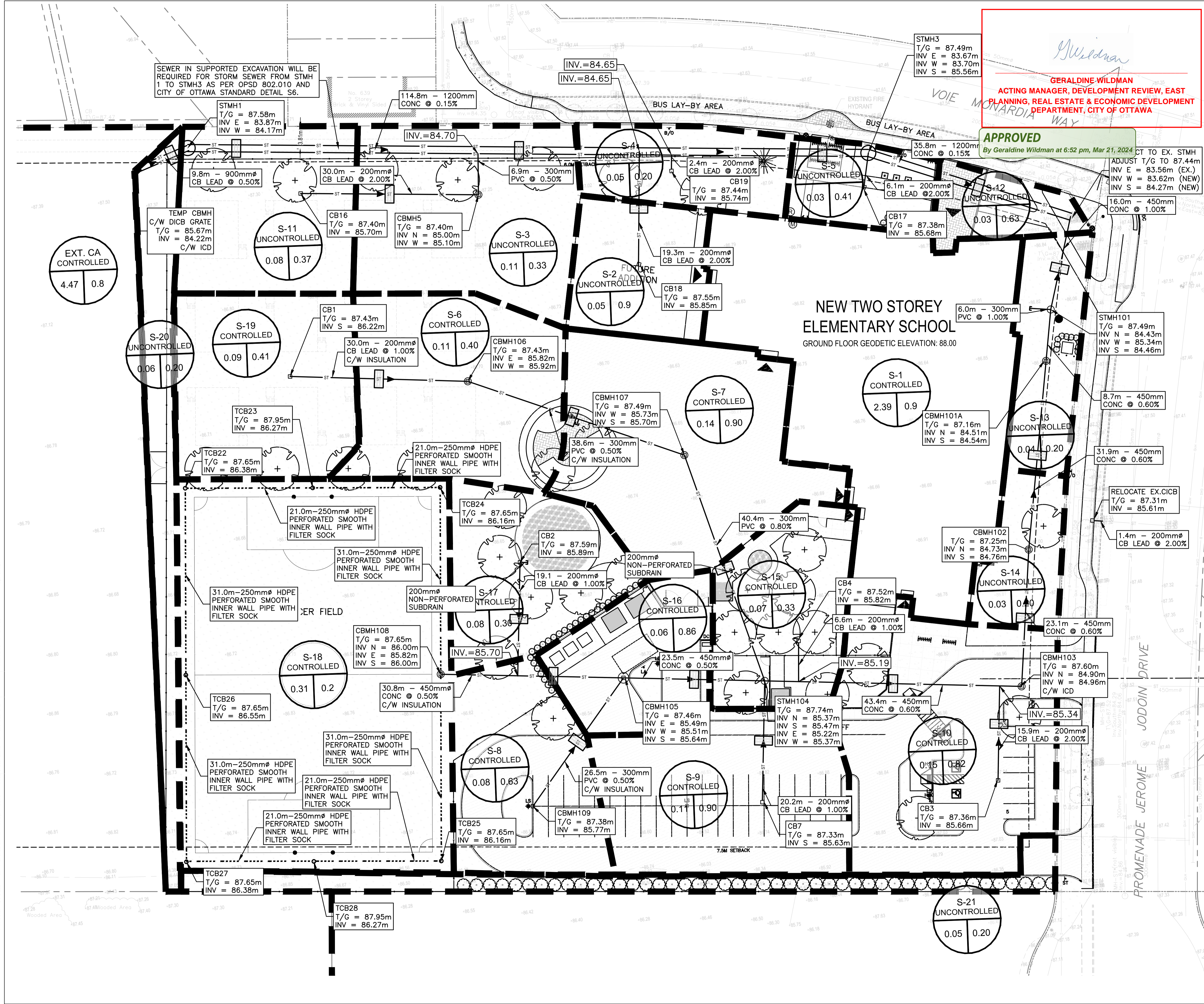
DRAWING TITLE/TITRE DU DESSIN
SERVICING PLAN

SCALE Echelle	1:300	PROJ. No. 0003850-9668	ISSUE No. 6	REV. No. 0
DRAWN BY DESSINE PAR	ST-RVT	DRAWING/DESSIN		
CHECKED BY VERIFIE PAR	DY	C04		
DATE	JANUARY 2024	ACAD FILE/FICHER: 0003850-9668 C01-8.dwg		

D07-12-23-0102

#####

GERALDINE WILDMAN
ACTING MANAGER, DEVELOPMENT REVIEW, EAST PLANNING, REAL ESTATE & ECONOMIC DEVELOPMENT DEPARTMENT, CITY OF OTTAWA
 APPROVED
 By Geraldine Wildman at 6:52 pm, Mar 21, 2024



- 6 0 2024/01/17 ISSUED FOR SITE PLAN CONTROL
- 5 0 2023/11/24 ISSUED FOR SITE PLAN CONTROL
- 4 0 2023/11/17 ISSUED FOR COORDINATION
- 3 0 2023/09/28 ISSUED FOR BUILDING PERMIT
- 2 0 2023/09/21 ISSUED FOR SITE PLAN CONTROL

LES IDÉES, CONCEPTS, DISPOSITIONS ET PLANS MONTRÉS OU REPRÉSENTÉS PAR CE DESSIN APPARTIENNENT À EDWARD J. CUHACI AND ASSOCIATES ARCHITECTS INC. ET ONT ÉTÉ CRÉÉS, DÉVELOPPÉS POUR ÊTRE UTILISÉS DANS LE CADRE DU PRÉSENT PROJET. ILS NE DOIVENT PAS ÊTRE UTILISÉS À D'AUTRES FINS NI COMMUNIQUÉS À QUI QUE CE SOIT SANS LA PERMISSION ÉCRITE DE EDWARD J. CUHACI AND ASSOCIATES ARCHITECTS INC.


L'ARCHITECTE DÉCLINE TOUTE RESPONSABILITÉ DÉCOULANT DE PROBLÈMES FAISANT SUITE AU NON RESPECT DES PLANS ET DEVIS OU DE L'INTENTION DU CONCEPT QU'ILS TRANSMETTENT, OU DE TOUTS PROBLÈMES POUVANT RÉSULTER DU DÉFAUT DE TIERS D'OBTENIR OU DE SUIVRE LES INSTRUCTIONS DE L'ARCHITECTE RELATIVEMENT AUX ERREURS, OMISSIONS, INCOHÉRENCES, AMBIGUITÉS OU CONTRADICTIONS ALLEGUES.

L'ENTREPRENEUR DOIT VÉRIFIER TOUTES LES DIMENSIONS SUR PLACE ET INFORMER L'ARCHITECTE DE TOUT ÉCART AVANT LE DÉBUT DES TRAVAUX. NE PAS MESURER LES DESSINS À L'ÉCHELLE.

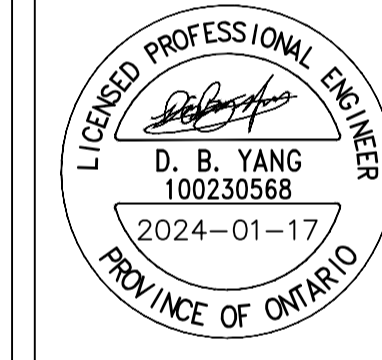
ALL IDEAS, DESIGNS, ARRANGEMENTS, AND PLANS INDICATED OR REPRESENTED BY THIS DRAWING ARE OWNED BY AND THE PROPERTY OF EDWARD J. CUHACI AND ASSOCIATES INC. AND WERE CREATED, EVOLVED, AND DEVELOPED FOR USE ON AND IN CONNECTION WITH THE SPECIFIED PROJECT. NONE OF THE IDEAS, DESIGNS, ARRANGEMENTS OR PLANS SHALL BE USED BY OR DISCLOSED TO ANY PERSON, FIRM, OR CORPORATION FOR ANY PURPOSE WHATSOEVER WITHOUT THE WRITTEN PERMISSION OF EDWARD J. CUHACI AND ASSOCIATES INC.

THE ARCHITECT WAIVES ANY AND ALL RESPONSIBILITY AND LIABILITY FOR PROBLEMS WHICH ARISE FROM FAILURE TO FOLLOW THESE PLANS, SPECIFICATIONS, AND THE DESIGN INTENT THEY CONVEY, OR FOR PROBLEMS WHICH ARISE FROM OTHERS' FAILURE TO OBTAIN AND/OR FOLLOW THE ARCHITECT'S GUIDANCE WITH RESPECT TO ANY ERRORS, OMISSIONS, INCONSISTENCIES, AMBIGUITIES OR CONFLICTS WHICH ARE ALLEGED.

CONTRACTOR TO VERIFY ALL DIMENSIONS AND NOTIFY THE ARCHITECT OF ANY DISCREPANCIES BEFORE WORK COMMENCES. DO NOT SCALE DRAWINGS.



 TRUE NORTH PLAN NORTH



 LICENSED PROFESSIONAL ENGINEER
 D. B. YANG
 100230568
 2024-01-17
 PROVINCE OF ONTARIO

EDWARD J. CUHACI & ASSOCIATES ARCHITECTS Inc.
 171 Slater St., Suite 100, Ottawa, Ontario, K1P 5H7
 Fax: (613) 236-1944 Telephone: (613) 236-7135 E-mail: info@cuhaci.com

PROJECT TITLE/TITRE DU PROJET
ÉCOLE ÉLÉMENTAIRE PUBLIQUE ORLÉANS SUD
 675 MONARDRIA WAY
 OTTAWA, ONTARIO

CONSEIL DES ÉCOLES PUBLIQUES DE L'EST DE L'ONTARIO
 2445 BOUL. ST-LAURENT, OTTAWA, ON

DRAWING TITLE/TITRE DU DESSIN
STORM DRAINAGE AREA PLAN

SCALE ECHELLE	1:300	PROJ. No 0003850-9668	ISSUE No 6	REV. No 0
DRAWN BY DESSINÉ PAR	ST-RVT	DRAWING/DESSIN		
CHECKED BY VÉRIFIÉ PAR		C05		
DATE	JANUARY 2024	ACAD FILE/FICHER: 0003850-9668 C01-8.002		



G. Wildman

GERALDINE WILDMAN
ACTING MANAGER, DEVELOPMENT REVIEW, EAST
PLANNING, REAL ESTATE & ECONOMIC DEVELOPMENT
DEPARTMENT, CITY OF OTTAWA

APPROVED
 By Geraldine Wildman at 6:52 pm, Mar 21, 2024

5m 2 0 5 10m
 SCALE: 1:300



- 6 0 2024/01/17 ISSUED FOR SITE PLAN CONTROL
- 5 0 2023/11/24 ISSUED FOR SITE PLAN CONTROL
- 4 0 2023/11/17 ISSUED FOR COORDINATION
- 3 0 2023/09/28 ISSUED FOR BUILDING PERMIT
- 2 0 2023/09/21 ISSUED FOR SITE PLAN CONTROL

ISSUE NO.	REV. NO.	DATE	ISSUE

LES IDÉES, CONCEPTS, DISPOSITIONS ET PLANS MONTRÉS OU REPRÉSENTÉS PAR CE DESSIN APPARTIENNENT À EDWARD J. CUHACI AND ASSOCIATES ARCHITECTS INC. ET ONT ÉTÉ CRÉÉS, ÉLÉVÉS, DÉVELOPPÉS POUR ÊTRE UTILISÉS DANS LE CADRE DU PRÉSENT PROJET. ILS NE DOIVENT PAS ÊTRE UTILISÉS À D'AUTRES FINS NI COMMUNIQUÉS À QUI QUE CE SOIT SANS LA PERMISSION ÉCRITE DE EDWARD J. CUHACI AND ASSOCIATES ARCHITECTS INC.

L'ARCHITECTE DÉCLINE TOUTE RESPONSABILITÉ DÉCOULANT DE PROBLÈMES FAISANT SUITE AU NON RESPECT DES PLANS ET DEVIS OU DE L'INTENTION DU CONCEPT QU'ILS TRANSMETTENT, OU DE TOUTS PROBLÈMES POUVANT RÉSULTER DU DÉFAUT DE TIERS D'OBTENIR OU DE SUIVRE LES INSTRUCTIONS DE L'ARCHITECTE RELATIVEMENT AUX ERREURS, OMISSIONS, INCOHÉRENCES, AMBIGUITÉS OU CONTRADICTIONS ALLEGUÉS.

L'ENTREPRENEUR DOIT VÉRIFIER TOUTES LES DIMENSIONS SUR PLACE ET INFORMER L'ARCHITECTE DE TOUT ÉCART AVANT LE DÉBUT DES TRAVAUX. NE PAS MESURER LES DESSINS À L'ÉCHELLE.

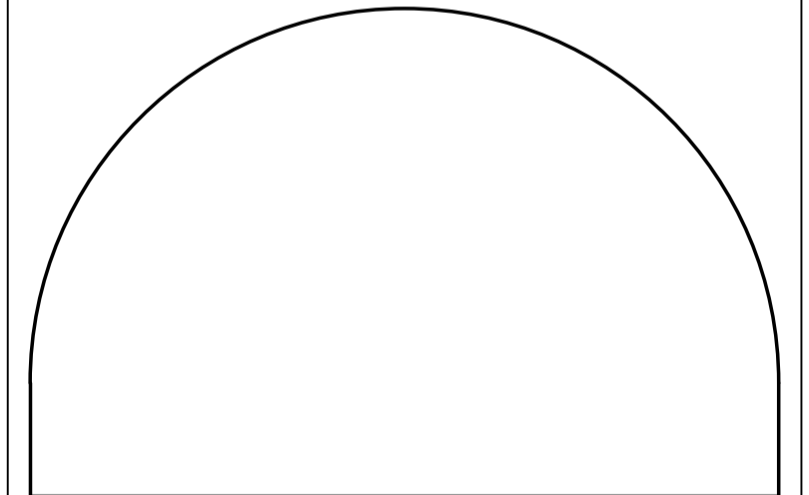
ALL IDEAS, DESIGNS, ARRANGEMENTS, AND PLANS INDICATED OR REPRESENTED BY THIS DRAWING ARE OWNED BY AND THE PROPERTY OF EDWARD J. CUHACI AND ASSOCIATES INC. AND WERE CREATED, EVOLVED, AND DEVELOPED FOR USE ON AND IN CONNECTION WITH THE SPECIFIED PROJECT. NONE OF THE IDEAS, DESIGNS, ARRANGEMENTS OR PLANS SHALL BE USED BY OR DISCLOSED TO ANY PERSON, FIRM, OR CORPORATION FOR ANY PURPOSE WHATSOEVER WITHOUT THE WRITTEN PERMISSION OF EDWARD J. CUHACI AND ASSOCIATES INC.

THE ARCHITECT WAIVES ANY AND ALL RESPONSIBILITY AND LIABILITY FOR PROBLEMS WHICH ARISE FROM FAILURE TO FOLLOW THESE PLANS, SPECIFICATIONS, AND THE DESIGN INTENT THEY CONVEY, OR FOR PROBLEMS WHICH ARISE FROM OTHERS' FAILURE TO OBTAIN AND/OR FOLLOW THE ARCHITECT'S GUIDANCE WITH RESPECT TO ANY ERRORS, OMISSIONS, INCONSISTENCIES, AMBIGUITIES OR CONFLICTS WHICH ARE ALLEGED.

CONTRACTOR TO VERIFY ALL DIMENSIONS AND NOTIFY THE ARCHITECT OF ANY DISCREPANCIES BEFORE WORK COMMENCES. DO NOT SCALE DRAWINGS

TRUE NORTH

PLAN NORTH



EDWARD J. CUHACI & ASSOCIATES ARCHITECTS Inc.
 171 Slater St., Suite 100, Ottawa, Ontario, K1P 5H7
 Fax: (613) 236-1944 Telephone: (613) 236-7135 E-mail: info@cuhaci.com

PROJECT TITLE/TITRE DU PROJET
ÉCOLE ÉLÉMENTAIRE PUBLIQUE ORLÉANS SUD
 675 MONARDIA WAY
 OTTAWA, ONTARIO

CONSEIL DES ÉCOLES PUBLIQUES DE L'EST DE L'ONTARIO
 2445 BOUL. ST-LAURENT, OTTAWA, ON

DRAWING TITLE/TITRE DU DESSIN
PRE-DEVELOPMENT DRAINAGE AREA PLAN

SCALE ECHELLE	1:300	PROJ. No. 0003850-9668	ISSUE No. 6	REV. No. 0
DRAWN BY DESSINE PAR	ST-RVT	DRAWING/DESSIN		
CHECKED BY VÉRIFIÉ PAR	DY	C06		
DATE	JANUARY 2024	ACAD FILE/FICHIER: 0003850-9668 C01-8.dwg		

#####

D07-12-23-0102

APPROVED
By Geraldine Wildman at 6:53 pm, Mar 21, 2024

G. Wildman
GERALDINE WILDMAN
ACTING MANAGER, DEVELOPMENT REVIEW, EAST
PLANNING, REAL ESTATE & ECONOMIC DEVELOPMENT
DEPARTMENT, CITY OF OTTAWA



6	0	2024/01/17	ISSUED FOR SITE PLAN CONTROL
5	0	2023/11/24	ISSUED FOR SITE PLAN CONTROL
4	0	2023/11/17	ISSUED FOR COORDINATION
3	0	2023/09/28	ISSUED FOR BUILDING PERMIT
2	0	2023/09/21	ISSUED FOR SITE PLAN CONTROL

ISSUE NO.	REV. NO.	DATE	ISSUE
-----------	----------	------	-------

LES IDÉES, CONCEPTS, DISPOSITIONS ET PLANS MONTRÉS OU REPRÉSENTÉS PAR CE DESSIN APPARTIENNENT À EDWARD J. CUHACI AND ASSOCIATES ARCHITECTS INC. ET ONT ÉTÉ CRÉÉS, ÉTÉ DÉVELOPPÉS POUR ÊTRE UTILISÉS DANS LE CADRE DU PRÉSENT PROJET. ILS NE DOIVENT PAS ÊTRE UTILISÉS À D'AUTRES FINS NI COMMUNIQUÉS À QUI QUE CE SOIT SANS LA PERMISSION ÉCRITE DE EDWARD J. CUHACI AND ASSOCIATES ARCHITECTS INC.

L'ARCHITECTE DÉCLINE TOUTE RESPONSABILITÉ DÉCOULANT DE PROBLÈMES FAISANT SUITE AU NON RESPECT DES PLANS ET DEVIS OU DE L'INTENTION DU CONCEPT QU'ILS TRANSMETTENT, OU DE TOUTS PROBLÈMES POUVANT RÉSULTER DU DÉFAUT DE TIERS D'OBTENIR OU DE SUIVRE LES INSTRUCTIONS DE L'ARCHITECTE RELATIVEMENT AUX ERREURS, OMISSIONS, INCOHÉRENCES, AMBIGUITÉS OU CONTRADICTIONS ALLEGUÉS.

L'ENTREPRENEUR DOIT VÉRIFIER TOUTES LES DIMENSIONS SUR PLACE ET INFORMER L'ARCHITECTE DE TOUT ÉCART AVANT LE DÉBUT DES TRAVAUX. NE PAS MESURER LES DESSINS À L'ÉCHELLE.

ALL IDEAS, DESIGNS, ARRANGEMENTS, AND PLANS INDICATED OR REPRESENTED BY THIS DRAWING ARE OWNED BY AND THE PROPERTY OF EDWARD J. CUHACI AND ASSOCIATES INC. AND WERE CREATED, EVOLVED, AND DEVELOPED FOR USE ON AND IN CONNECTION WITH THE SPECIFIED PROJECT. NONE OF THE IDEAS, DESIGNS, ARRANGEMENTS OR PLANS SHALL BE USED BY OR DISCLOSED TO ANY PERSON, FIRM, OR CORPORATION FOR ANY PURPOSE WHATSOEVER WITHOUT THE WRITTEN PERMISSION OF EDWARD J. CUHACI AND ASSOCIATES INC.

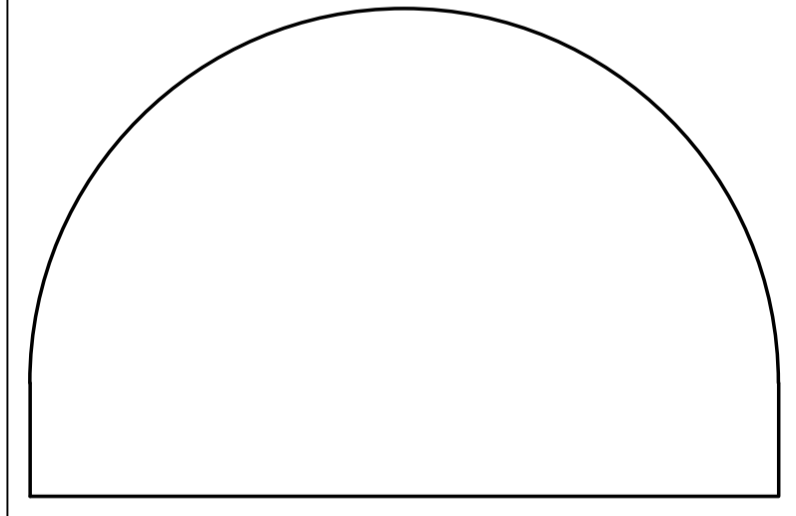
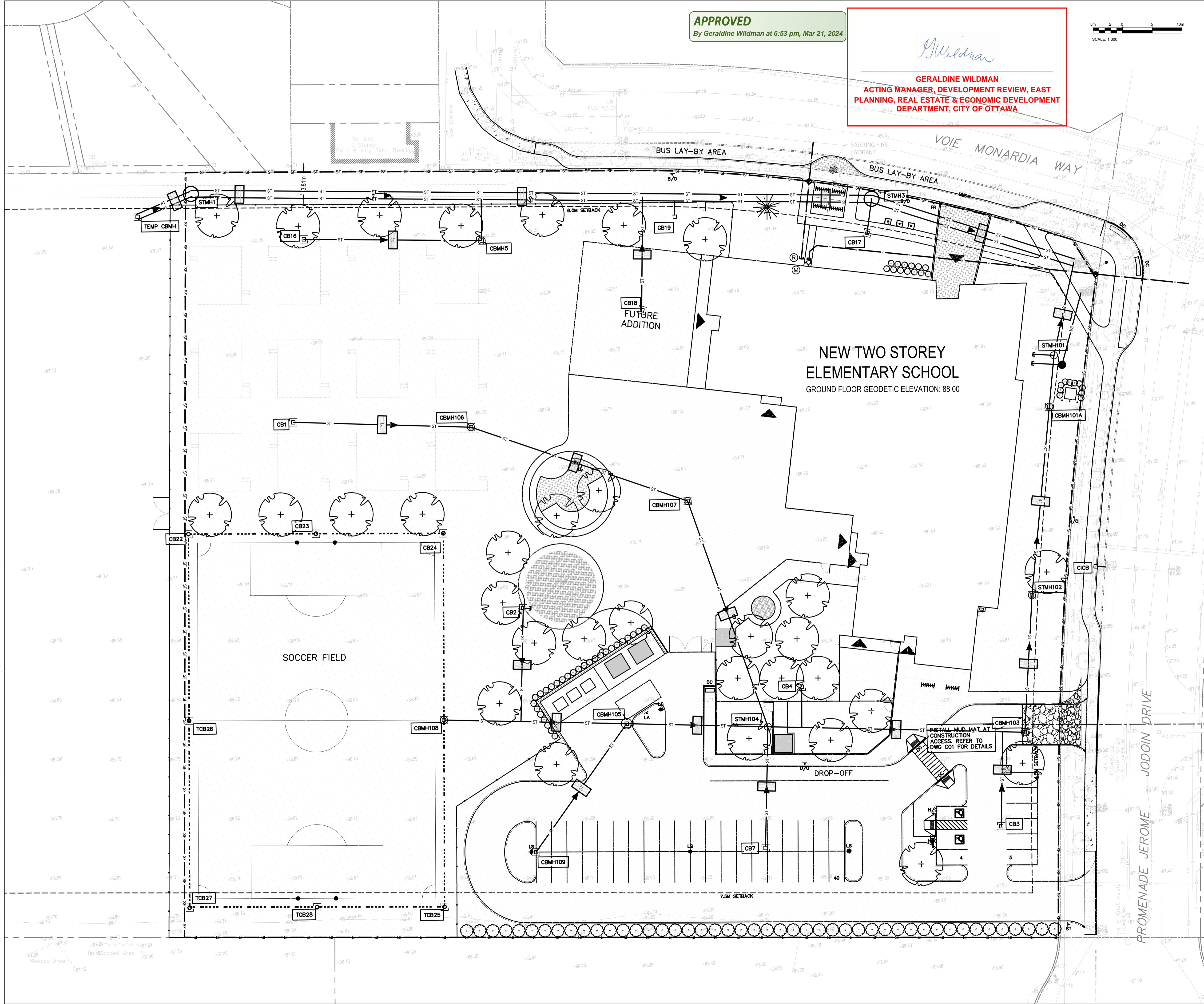
THE ARCHITECT WAIVES ANY AND ALL RESPONSIBILITY AND LIABILITY FOR PROBLEMS WHICH ARISE FROM FAILURE TO FOLLOW THESE PLANS, SPECIFICATIONS, AND THE DESIGN INTENT THEY CONVEY, OR FOR PROBLEMS WHICH ARISE FROM OTHERS' FAILURE TO OBTAIN AND/OR FOLLOW THE ARCHITECT'S GUIDANCE WITH RESPECT TO ANY ERRORS, OMISSIONS, INCONSISTENCIES, AMBIGUITIES OR CONFLICTS WHICH ARE ALLEGED.

CONTRACTOR TO VERIFY ALL DIMENSIONS AND NOTIFY THE ARCHITECT OF ANY DISCREPANCIES BEFORE WORK COMMENCES. DO NOT SCALE DRAWINGS

TRUE NORTH

PLAN NORTH

REGISTERED PROFESSIONAL ENGINEER
D. B. YANG
D. B. YANG
100230568
2024-01-17
PROVINCE OF ONTARIO



EDWARD J. CUHACI & ASSOCIATES ARCHITECTS Inc.
171 Slater St, Suite 100, Ottawa, Ontario, K1P 5H7
Fax: (613) 236-1944 Telephone: (613) 236-7135 E-mail: info@cuhaci.com

PROJECT TITLE/TITRE DU PROJET
ÉCOLE ÉLÉMENTAIRE PUBLIQUE ORLÉANS SUD
675 MONARDIA WAY
OTTAWA, ONTARIO

CONSEIL DES ÉCOLES PUBLIQUES DE L'EST DE L'ONTARIO
2445 BOUL. ST-LAURENT, OTTAWA, ON

DRAWING TITLE/TITRE DU DESSIN
EROSION AND SEDIMENT CONTROL PLAN

SCALE ECHELLE	1:300	PROJ. No. 0003850-9668	ISSUE No. 6	REV. No. 0
DRAWN BY DESSINE PAR	ST-RVT	DRAWING/DESSIN		
CHECKED BY VÉRIFIÉ PAR	DY	C07		
DATE	JANUARY 2024	ACAD FILE/FICHER: 0003850-9668 C01-8.dwg		

D07-12-23-0102

#####

Roof drain	Area (m ²)	Depth (m)	Theoretical rooftop storage volume (m ³)	Storage volume (m ³)	Max flow rate (l/s)
1	41.6	0.15	6.2	5.0	0.95
2	40.7	0.15	6.1	4.9	0.95
3	36.4	0.15	5.5	4.4	0.95
4	35.5	0.15	5.3	4.3	0.95
5	59.6	0.15	8.9	7.2	0.95
6	62	0.15	9.3	7.4	0.95
7	64.1	0.15	9.6	7.7	0.95
8	16.7	0.15	2.5	2.0	0.95
9	48.7	0.15	7.3	5.8	0.95
10	174.6	0.15	26.2	21.0	0.95
11	174.6	0.15	26.2	21.0	0.95
12	191.8	0.15	28.8	23.0	0.95
13	186.5	0.15	28.0	22.4	0.95
14	37.9	0.15	5.7	4.5	0.95
15	36.2	0.15	5.4	4.3	0.95
16	49.3	0.15	7.4	5.9	0.95
17	61.3	0.15	9.2	7.4	0.95
18	48.7	0.15	7.3	5.8	0.95
19	45.4	0.15	6.8	5.4	0.95
20	45.4	0.15	6.8	5.4	0.95
21	150.5	0.15	22.6	18.1	0.95
22	129.9	0.15	19.5	15.6	0.95
23	150.5	0.15	22.6	18.1	0.95
24	134.7	0.15	20.2	16.2	0.95
25	82.2	0.15	12.3	9.9	0.95
26	63.6	0.15	9.5	7.6	0.95
27	69.1	0.15	10.4	8.3	0.95
Total	2237.5		268.5	215.6	

ROOF DRAIN PER WATTS ADJUSTABLE FLOW CONTROL FOR ROOF DRAINS OR APPROVED EQUIVALENT.

G. Wildman

GERALDINE WILDMAN
ACTING MANAGER, DEVELOPMENT REVIEW, EAST PLANNING, REAL ESTATE & ECONOMIC DEVELOPMENT DEPARTMENT, CITY OF OTTAWA

APPROVED
By Geraldine Wildman at 6:53 pm, Mar 21, 2024

WATTS Adjustable Accutrol Weir Tag: _____ Adjustable Flow Control for Roof Drains

ADJUSTABLE ACCUTROL (for Large Sump Roof Drains only)

For more flexibility in controlling flow with heads deeper than 2", Watts Drainage offers the Adjustable Accutrol. The Adjustable Accutrol Weir is designed with a single parabolic opening that can be covered to restrict flow above 2" of head to less than 5 gpm per inch, up to 6" of head. To adjust the flow rate for depths over 2" of head, set the slot in the adjustable upper cone according to the flow rate required. Refer to Table 1 below.

Note: Flow rates are directly proportional to the amount of weir opening that is exposed.

EXAMPLE:

For example, if the adjustable upper cone is set to cover 1/2 of the weir opening, flow rates above 2" of head will be restricted to 2-1/2 gpm per inch of head.

Therefore, at 3" of head, the flow rate through the Accutrol Weir that has 1/2 the slot exposed will be:
[5 gpm (per inch of head) x 2 inches of head] + 2-1/2 gpm (for the third inch of head) = 12-1/2 gpm.

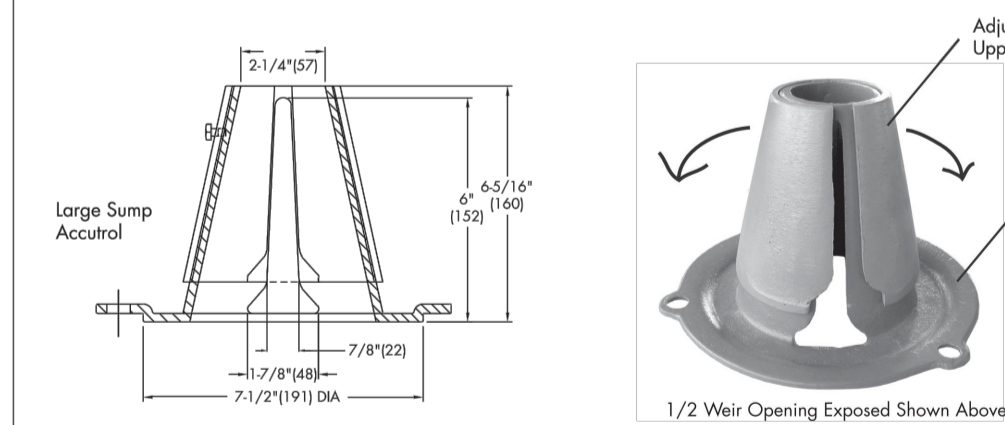


TABLE 1. Adjustable Accutrol Flow Rate Settings

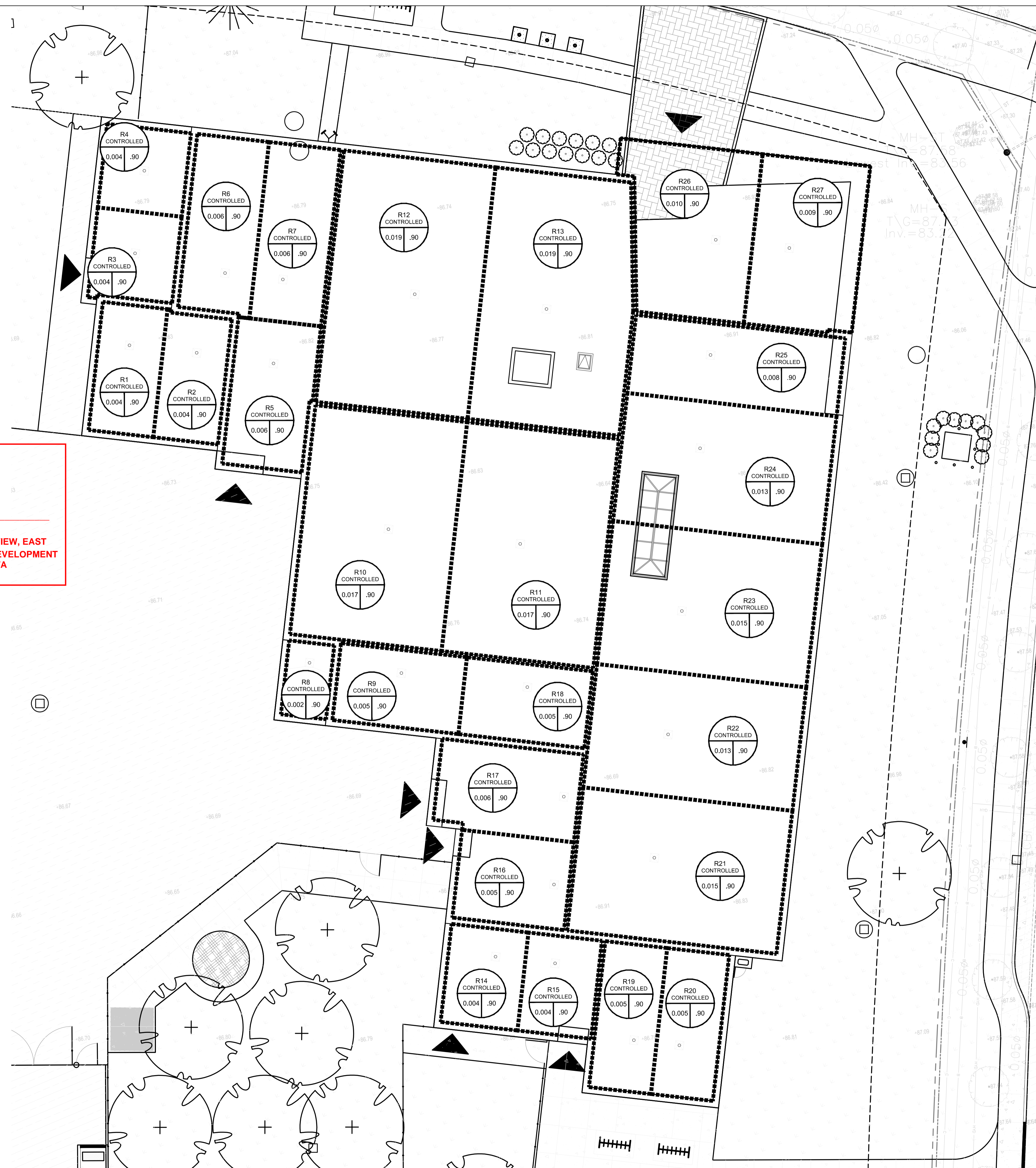
Weir Opening Exposed	1"	2"	3"	4"	5"	6"
Fully Exposed	5	10	15	20	25	30
3/4	5	10	13.75	17.5	21.25	25
1/2	5	10	12.5	15	17.5	20
1/4	5	10	11.25	12.5	13.75	15
Closed	5	5	5	5	5	5

Job Name _____ Contractor _____
Job Location _____ Contractor's P.O. No. _____
Engineer _____ Representative _____

Watts product specifications in U.S. customary units and metric are approximate and are provided for reference only. For precise measurements, please contact Watts Technical Services. Watts reserves the right to change or modify product design, construction, specifications, or materials without prior notice and without incurring any obligation to make such changes and modifications on Watts products previously or subsequently sold.

USA: Tel: (800) 338-5261 • Fax: (920) 248-3024 • Watts.com
Canada: Tel: (905) 332-4090 • Fax: (905) 332-7068 • Watts.ca
Latin America: Tel: (52) 81-1001-8000 • Fax: (52) 81-8000-7091 • Watts.com

ES-WD-FD-ACCUTROL-ADU-CAN 1615 © 2016 Watts



- 6 0 2024/01/17 ISSUED FOR SITE PLAN CONTROL
- 5 0 2023/11/24 ISSUED FOR SITE PLAN CONTROL
- 4 0 2023/11/17 ISSUED FOR COORDINATION
- 3 0 2023/09/28 ISSUED FOR BUILDING PERMIT
- 2 0 2023/09/21 ISSUED FOR SITE PLAN CONTROL

ISSUE NO.	REV. NO.	DATE	ISSUE

LES IDÉES, CONCEPTS, DISPOSITIONS ET PLANS MONTRÉS OU REPRÉSENTÉS PAR CE DESSIN APPARTIENNENT À EDWARD J. CUHACI AND ASSOCIATES ARCHITECTS INC. ET ONT ÉTÉ CRÉÉS, ET DÉVELOPPÉS POUR ÊTRE UTILISÉS DANS LE CADRE DU PRÉSENT PROJET. ILS NE DOIVENT PAS ÊTRE UTILISÉS À D'AUTRES FINS NI COMMUNIQUÉS À QUI QUE CE SOIT SANS LA PERMISSION ÉCRITE DE EDWARD J. CUHACI AND ASSOCIATES ARCHITECTS INC.

L'ARCHITECTE DÉCLINE TOUTE RESPONSABILITÉ DÉCOULANT DE PROBLÈMES FAISANT SUITE AU NON RESPECT DES PLANS ET DEVIS OU DE L'INTENTION DU CONCEPT QU'ILS TRANSMETTENT, OU DE TOUTS PROBLÈMES POUVANT RÉSULTER DU DÉFAUT DE TIERS D'OBTENIR OU DE SUIVRE LES INSTRUCTIONS DE L'ARCHITECTE RELATIVEMENT AUX ERREURS, OMISSIONS, INCOHÉRENCES, AMBIGÜITÉS OU CONTRADICTIONS ALLEGUÉS.

L'ENTREPRENEUR DOIT VÉRIFIER TOUTES LES DIMENSIONS SUR PLACE ET INFORMER L'ARCHITECTE DE TOUT ÉCART AVANT LE DÉBUT DES TRAVAUX. NE PAS MESURER LES DESSINS À L'ÉCHELLE.

ALL IDEAS, DESIGNS, ARRANGEMENTS, AND PLANS INDICATED OR REPRESENTED BY THIS DRAWING ARE OWNED BY AND THE PROPERTY OF EDWARD J. CUHACI AND ASSOCIATES INC. AND WERE CREATED, EVOLVED, AND DEVELOPED FOR USE ON AND IN CONNECTION WITH THE SPECIFIED PROJECT. NONE OF THE IDEAS, DESIGNS, ARRANGEMENTS OR PLANS SHALL BE USED BY OR DISCLOSED TO ANY PERSON, FIRM, OR CORPORATION FOR ANY PURPOSE WHATSOEVER WITHOUT THE WRITTEN PERMISSION OF EDWARD J. CUHACI AND ASSOCIATES INC.

THE ARCHITECT WAIVES ANY AND ALL RESPONSIBILITY AND LIABILITY FOR PROBLEMS WHICH ARISE FROM FAILURE TO FOLLOW THESE PLANS, SPECIFICATIONS, AND THE DESIGN INTENT THEY CONVEY, OR FOR PROBLEMS WHICH ARISE FROM OTHERS' FAILURE TO OBTAIN AND/OR FOLLOW THE ARCHITECT'S GUIDANCE WITH RESPECT TO ANY ERRORS, OMISSIONS, INCONSISTENCIES, AMBIGÜITIES OR CONFLICTS WHICH ARE ALLEGED.

CONTRACTOR TO VERIFY ALL DIMENSIONS AND NOTIFY THE ARCHITECT OF ANY DISCREPANCIES BEFORE WORK COMMENCES. DO NOT SCALE DRAWINGS

TRUE NORTH

PLAN NORTH

EDWARD J. CUHACI & ASSOCIATES ARCHITECTS Inc.
171 Slaters St., Suite 100, Ottawa, Ontario, K1P 5H7
Fax: (613) 236-1944 Telephone: (613) 236-7135 E-mail: info@cuhaci.com

PROJECT TITLE/TITRE DU PROJET
ÉCOLE ÉLÉMENTAIRE PUBLIQUE ORLÉANS SUD
675 MONARDIA WAY
OTTAWA, ONTARIO

CONSEIL DES ÉCOLES PUBLIQUES DE L'EST DE L'ONTARIO
2445 BOUL. ST-LAURENT, OTTAWA, ON

DRAWING TITLE/TITRE DU DESSIN
ROOF DRAINAGE AREA PLAN

SCALE	PROJ. No.	ISSUE No.	REV. No.
ECHELLE: 1:150	0003850-9668	6	0
DRAWN BY	ST-RVT	DRAWING/DESSIN	
CHECKED BY	DY		
DATE	JANUARY 2024		

C08

ACAD FILE/FICHER: 0003850-9668 C01-8.dwg

D07-12-23-0102