

*****ADDITIONAL LANDSCAPE PLAN NOTES*****
 LANDSCAPING ON CITY OF OTTAWA PROPERTY TO BE TO CITY OF OTTAWA DETAILS / STANDARDS. L1-L6, L17
 TREES ON CITY OF OTTAWA PROPERTY TO CARRY A 2 YEAR WARRANTY.
 REFER TO SITE PLAN FOR LOCATIONS AND DIMENSIONS OF BUILDING, ROADS, PARKING, CURBS, SETBACKS,
 EASEMENTS, LEGAL DESCRIPTION.
 EXISTING AND PROPOSED SITE SERVICING IS SHOWN ON THE LANDSCAPE PLAN TO PROVIDE AN AWARENESS TO
 REVIEWERS AND CONTRACTORS OF THEIR INTENDED LOCATION AND SEPARATION OF TREES/SERVICES/PROPOSED
 LANDSCAPING. DETERMINE AS BUILT LOCATIONS OF SERVICES PRIOR TO PLANTING AND ADJUST ACCORDINGLY TO
 RESPECT REQUIRED SETBACKS

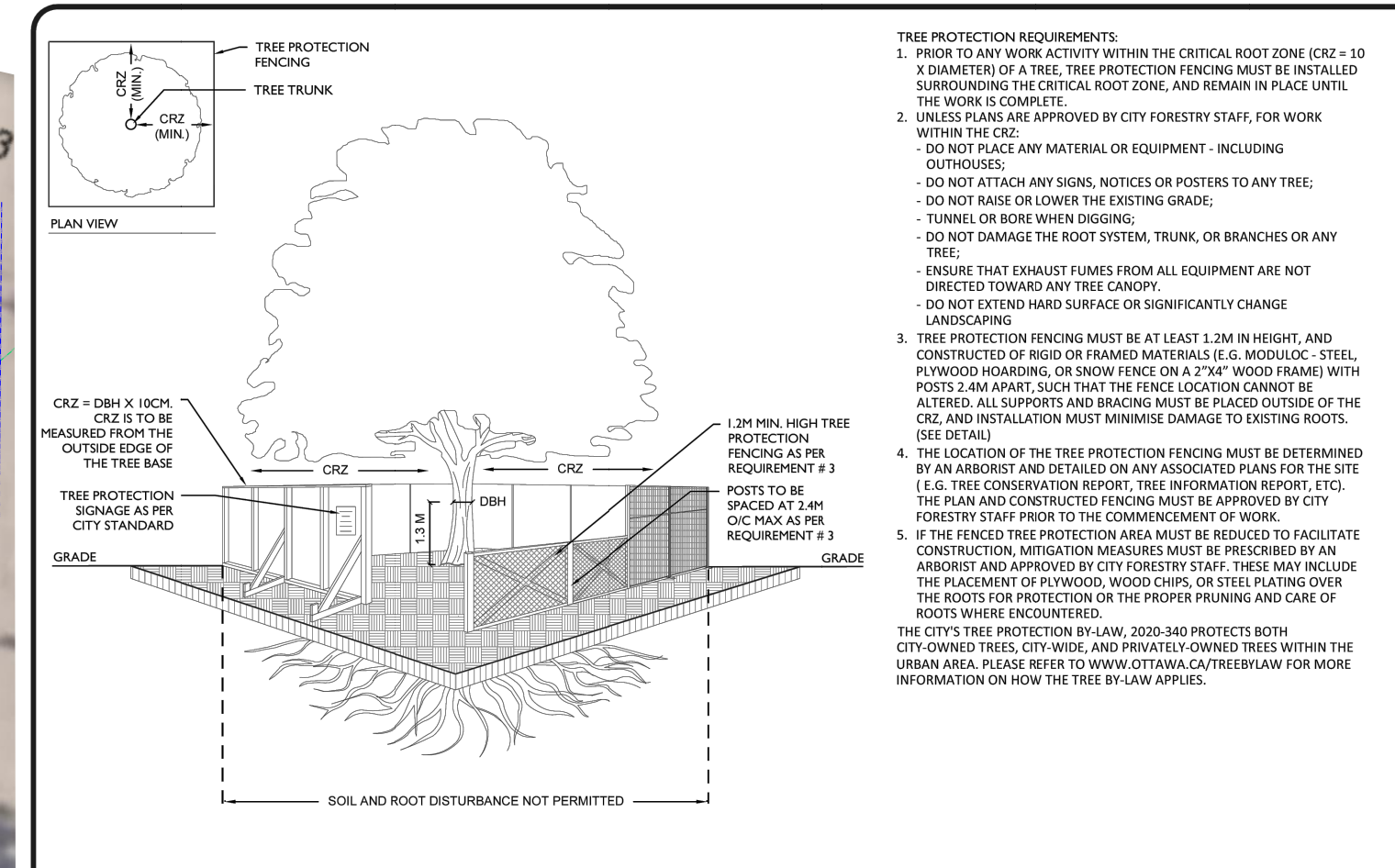
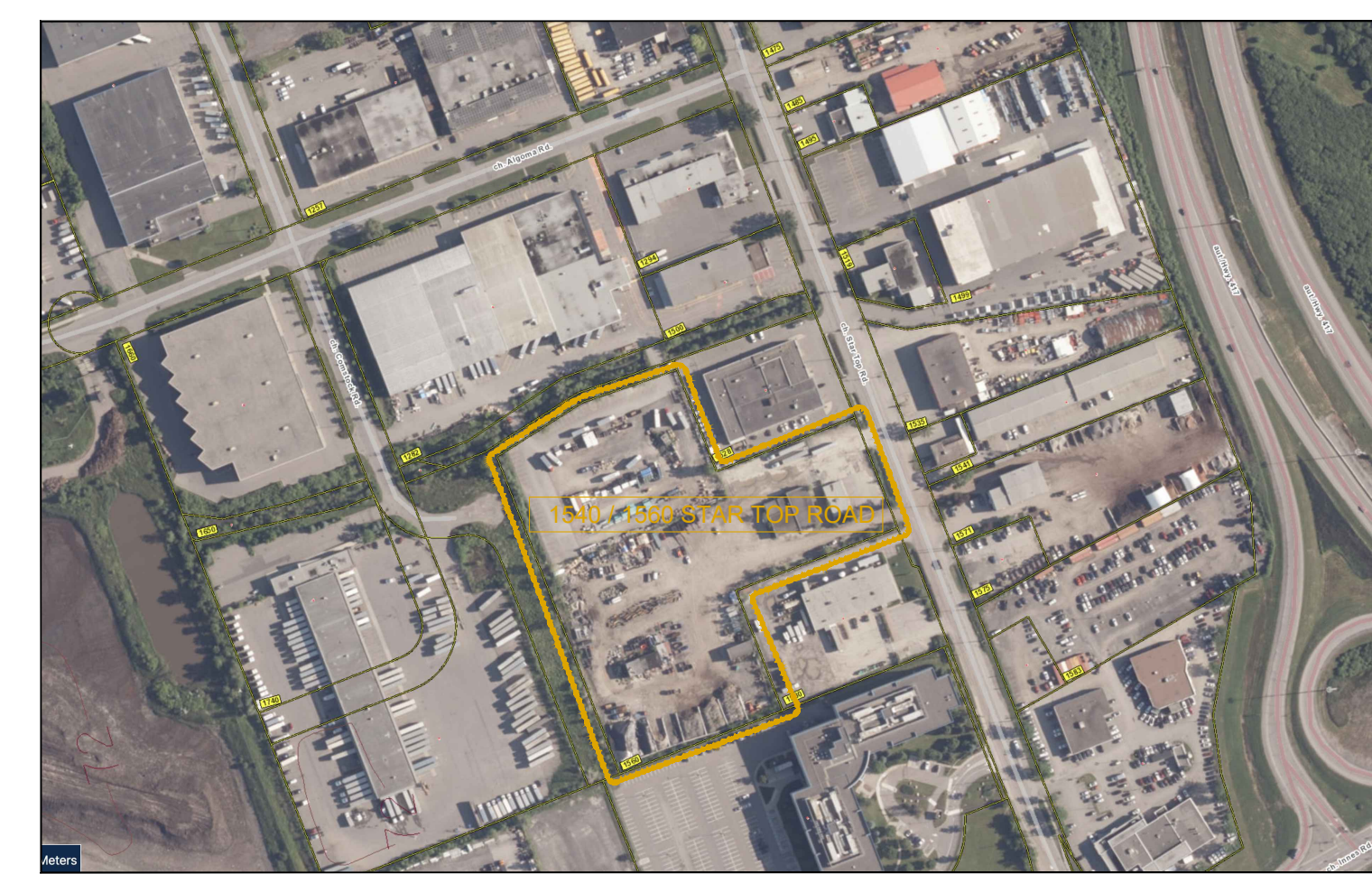
CONSULTANT TEAM

DESIGN BUILDER: BBS CONSTRUCTION INC.	(613) 228-8630
ARCHITECT: DESIGNING ARCHITECTURE & INTERIOR DESIGN	(613) 697-6113
TRANSPORTATION, PLANNING AND CIVIL: MONTOSH PERRY CONSULTING ENGINEERS	(613) 836-2154
LANDSCAPE ARCHITECT: GJA INC.	(613) 296-5130
GEOTECHNICAL AND ENVIRONMENTAL: PATERSON GROUP INC.	(613) 226-7381
SURVEYOR: MONTOSH PERRY SURVEYING INC.	(613) 287-6524
ENVIRONMENTAL PLANNING: MUNCASTER ENVIRONMENTAL PLANNING INC.	(613) 748-3753

**CITY OF OTTAWA
 LANDSCAPING STANDARD DETAIL DRAWINGS**

TABLE OF CONTENTS

L1	Planting System Standard Detail
L2	Planting System - Wet Drainage (Low)
L3	Planting System - Wet Drainage (High)
L4	Planting System - Wet Drainage (Very High)
L5	Planting System - Wet Drainage (Extreme)
L6	Planting System - Wet Drainage (Extreme - High)
L7	Planting System - Wet Drainage (Extreme - Very High)
L8	Planting System - Wet Drainage (Extreme - Extreme)
L9	Planting System - Wet Drainage (Extreme - Extreme - High)
L10	Planting System - Wet Drainage (Extreme - Extreme - Very High)
L11	Planting System - Wet Drainage (Extreme - Extreme - Extreme)
L12	Planting System - Wet Drainage (Extreme - Extreme - Extreme - High)
L13	Planting System - Wet Drainage (Extreme - Extreme - Extreme - Very High)
L14	Planting System - Wet Drainage (Extreme - Extreme - Extreme - Extreme)
L15	Planting System - Wet Drainage (Extreme - Extreme - Extreme - Extreme - High)
L16	Planting System - Wet Drainage (Extreme - Extreme - Extreme - Extreme - Very High)
L17	Planting System - Wet Drainage (Extreme - Extreme - Extreme - Extreme - Extreme)
L18	Planting System - Wet Drainage (Extreme - Extreme - Extreme - Extreme - Extreme - High)
L19	Planting System - Wet Drainage (Extreme - Extreme - Extreme - Extreme - Extreme - Very High)
L20	Planting System - Wet Drainage (Extreme - Extreme - Extreme - Extreme - Extreme - Extreme)
L21	Planting System - Wet Drainage (Extreme - Extreme - Extreme - Extreme - Extreme - Extreme - High)
L22	Planting System - Wet Drainage (Extreme - Extreme - Extreme - Extreme - Extreme - Extreme - Very High)
L23	Planting System - Wet Drainage (Extreme - Extreme - Extreme - Extreme - Extreme - Extreme - Extreme)
L24	Planting System - Wet Drainage (Extreme - Extreme - Extreme - Extreme - Extreme - Extreme - Extreme - High)
L25	Planting System - Wet Drainage (Extreme - Extreme - Extreme - Extreme - Extreme - Extreme - Extreme - Very High)
L26	Planting System - Wet Drainage (Extreme - Extreme - Extreme - Extreme - Extreme - Extreme - Extreme - Extreme)
L27	Planting System - Wet Drainage (Extreme - Extreme - Extreme - Extreme - Extreme - Extreme - Extreme - Extreme - High)
L28	Planting System - Wet Drainage (Extreme - Extreme - Extreme - Extreme - Extreme - Extreme - Extreme - Extreme - Very High)
L29	Planting System - Wet Drainage (Extreme - Extreme - Extreme - Extreme - Extreme - Extreme - Extreme - Extreme - Extreme)
L30	Planting System - Wet Drainage (Extreme - Extreme - Extreme - Extreme - Extreme - Extreme - Extreme - Extreme - Extreme - High)
L31	Planting System - Wet Drainage (Extreme - Extreme - Extreme - Extreme - Extreme - Extreme - Extreme - Extreme - Extreme - Very High)
L32	Planting System - Wet Drainage (Extreme - Extreme - Extreme - Extreme - Extreme - Extreme - Extreme - Extreme - Extreme - Extreme)
L33	Planting System - Wet Drainage (Extreme - Extreme - Extreme - Extreme - Extreme - Extreme - Extreme - Extreme - Extreme - Extreme - High)
L34	Planting System - Wet Drainage (Extreme - Extreme - Extreme - Extreme - Extreme - Extreme - Extreme - Extreme - Extreme - Extreme - Very High)
L35	Planting System - Wet Drainage (Extreme - Extreme - Extreme - Extreme - Extreme - Extreme - Extreme - Extreme - Extreme - Extreme - Extreme)
L36	Planting System - Wet Drainage (Extreme - Extreme - Extreme - Extreme - Extreme - Extreme - Extreme - Extreme - Extreme - Extreme - Extreme - High)
L37	Planting System - Wet Drainage (Extreme - Extreme - Extreme - Extreme - Extreme - Extreme - Extreme - Extreme - Extreme - Extreme - Extreme - Very High)
L38	Planting System - Wet Drainage (Extreme - Extreme - Extreme - Extreme - Extreme - Extreme - Extreme - Extreme - Extreme - Extreme - Extreme - Extreme)
L39	Planting System - Wet Drainage (Extreme - Extreme - Extreme - Extreme - Extreme - Extreme - Extreme - Extreme - Extreme - Extreme - Extreme - Extreme - High)
L40	Planting System - Wet Drainage (Extreme - Extreme - Extreme - Extreme - Extreme - Extreme - Extreme - Extreme - Extreme - Extreme - Extreme - Extreme - Very High)
L41	Planting System - Wet Drainage (Extreme - Extreme - Extreme - Extreme - Extreme - Extreme - Extreme - Extreme - Extreme - Extreme - Extreme - Extreme - Extreme)
L42	Planting System - Wet Drainage (Extreme - Extreme - Extreme - Extreme - Extreme - Extreme - Extreme - Extreme - Extreme - Extreme - Extreme - Extreme - Extreme - High)
L43	Planting System - Wet Drainage (Extreme - Extreme - Extreme - Extreme - Extreme - Extreme - Extreme - Extreme - Extreme - Extreme - Extreme - Extreme - Extreme - Very High)
L44	Planting System - Wet Drainage (Extreme - Extreme - Extreme - Extreme - Extreme - Extreme - Extreme - Extreme - Extreme - Extreme - Extreme - Extreme - Extreme - Extreme)
L45	Planting System - Wet Drainage (Extreme - Extreme - Extreme - Extreme - Extreme - Extreme - Extreme - Extreme - Extreme - Extreme - Extreme - Extreme - Extreme - Extreme - High)
L46	Planting System - Wet Drainage (Extreme - Extreme - Extreme - Extreme - Extreme - Extreme - Extreme - Extreme - Extreme - Extreme - Extreme - Extreme - Extreme - Extreme - Very High)
L47	Planting System - Wet Drainage (Extreme - Extreme - Extreme - Extreme - Extreme - Extreme - Extreme - Extreme - Extreme - Extreme - Extreme - Extreme - Extreme - Extreme - Extreme)
L48	Planting System - Wet Drainage (Extreme - Extreme - Extreme - Extreme - Extreme - Extreme - Extreme - Extreme - Extreme - Extreme - Extreme - Extreme - Extreme - Extreme - Extreme - High)
L49	Planting System - Wet Drainage (Extreme - Extreme - Extreme - Extreme - Extreme - Extreme - Extreme - Extreme - Extreme - Extreme - Extreme - Extreme - Extreme - Extreme - Extreme - Very High)
L50	Planting System - Wet Drainage (Extreme - Extreme - Extreme - Extreme - Extreme - Extreme - Extreme - Extreme - Extreme - Extreme - Extreme - Extreme - Extreme - Extreme - Extreme - Extreme)



TREE PROTECTION SPECIFICATION

SCALE: NTS
 DATE: MARCH 2021
 DRAWING NO.: 1 of 1

TREE SCHEDULE - BBS CONSTRUCTION 1540 / 60 STARTOP ROAD BOONE WAREHOUSE

CODE	QTY	BOTANICAL NAME	COMMON NAME	B&B SPECIMEN	SPREAD	NATIVE
AR	8	Acer rubrum	Red Maple	50mm cal	12M	YES
AS	8	Acer saccharum	Sugar Maple	50mm cal	15M	YES
AG	3	Aesculus glabra	Ohio Buckeye	50mm cal	10M	YES
BP	1	Betula papyrifera	Paper Birch	50mm cal	10M	YES
CO	7	Celtis occidentalis	Common Hackberry	50mm cal	18M	YES
GD	3	Gymnocladus dioica	Kentucky Coffee Tree	50mm cal	12M	YES
QM	2	Quercus macrocarpa	Bur Oak	50mm cal	20M	YES
QR	6	Quercus rubra	Red Oak	50mm cal	15M	YES
TOTALS	38	4				
AB	1	Abies balsamea	Balsam Fir	1.5m Ht.	N/A	YES
JV	5	Juniperus virginiana	Eastern Red Cedar	1.5m Ht.	N/A	YES
LL	1	Larix laricina	Eastern Larch / Tamarack	1.5m Ht.	N/A	YES
PS	1	Pinus strobus	White Pine	1.5m Ht.	N/A	YES

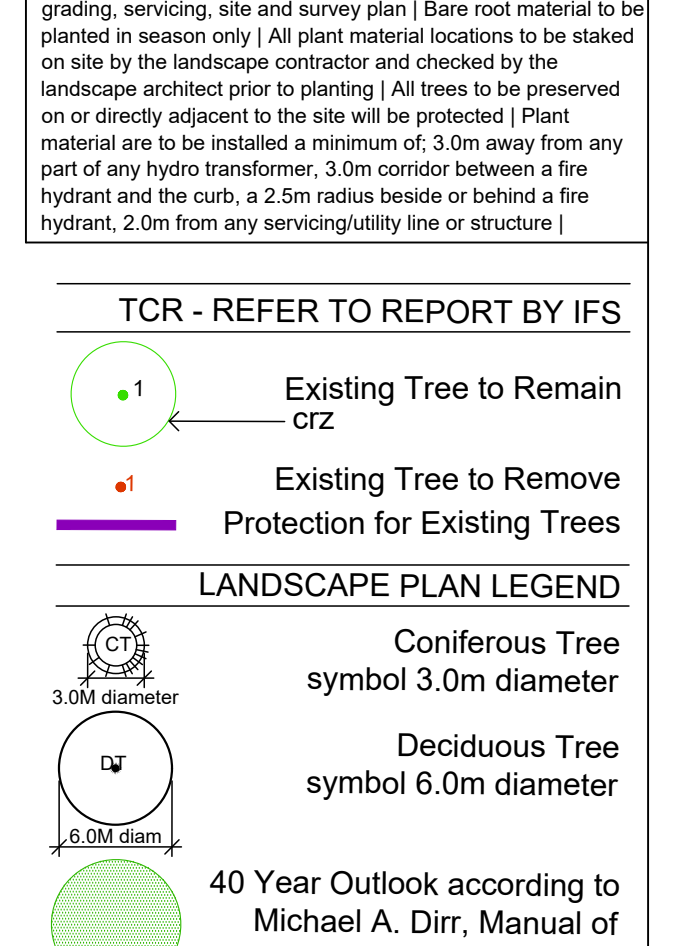
RIPARIAN PLANTING PER EIS BOONE WAREHOUSE STARTOP

Code	Qty.	Botanical Name	Common Name	Size	Condition	NATIVE
ac	5	Amelanchier canadensis	Tree Serviceberry	1.0m Ht.	Pot	YES
as	5	Acer saccharum	Sugar Maple	1.0m Ht.	Pot	YES
cr	5	Cornus racemosa	Grey Dogwood	1.0m Ht.	Pot	YES
vt	5	Viburnum lentago	Nannyberry	1.0m Ht.	Pot	YES
ta	5	Tilia americana	Basswood	1.0m Ht.	Pot	YES
ab	5	Abies balsamea	Balsam Fir	0.5m Ht.	Pot	YES
pg	5	Picea glauca	White Spruce	0.5m Ht.	Pot	YES

SHRUBS BOONE WAREHOUSE STARTOP

Code	Qty.	Botanical Name	Common Name	Size	Condition	Condition
HK	75	Hypericum kalmianum	Kalm St. John's Wort	30cm	Pot	YES
HP	400	Hypericum prolificum	Shrubby St. John's Wort	40cm	Pot	YES
RP	350	Rosa palustris	Swamp Rose	50cm	Pot	YES
SA	150	Spiraea alba	Meadowsweet	60cm	Pot	YES

Drawing Remains the Property of Copyright
 Reserved by Gino J. Aiello Landscape Architect.
 Do Not Use or Reproduce Without Approval of
 Gino J. Aiello.
NOT To Be Used For Construction Unless
 Indicated by Revision: **FOR LANDSCAPE
 CONSTRUCTION**
Contractor is Responsible for Verification of Site
 Locations of all Utilities. Report any Discrepancies
 Between Site and Drawing Immediately to
 Gino J. Aiello. Do Not Proceed Until Clarified.
 TURF AREAS TO BE SOE COW 150MM DEPTH
 TOPSOIL ON APPROVED SUBGRADE | SOE TO
 BE #1 GRADE TURFGRASS NURSERY | SOE PER
 NSGA - Fine Fescue/Kentucky Bluegrass Sod |
 PLANTING MIX TO BE APPROVED BY
 LANDSCAPE ARCHITECT | PLANT MATERIAL
 TO MEET CNLA STANDARDS/BE APPROVED BY
 LANDSCAPE ARCHITECT PRIOR TO PLANTING
 ALL MATERIALS & WORK TO BE MAINTAINED
 UNTIL FINAL ACCEPTANCE. (MOWING TURF,
 WEEDING BEDS, WATERING TURF & PLANTS)
 & INCLUDE 1 YEAR WARRANTY FROM DATE OF
 FINAL ACCEPTANCE | PROVIDE WATERING OF
 ALL PLANT MATERIAL AS REQUIRED FOR
 PROPER ESTABLISHMENT, UNTIL END OF
 WARRANTY PERIOD | REFER TO CIVIL
 ENGINEER'S DRAWING FOR ELEVATIONS /
 GRADING |



TCR - REFER TO REPORT BY IFS

Existing Tree to Remain
 Existing Tree to Remove
 Protection for Existing Trees

LANDSCAPE PLAN LEGEND

Coniferous Tree
 symbol 3.0m diameter

Deciduous Tree
 symbol 6.0m diameter

40 Year Outlook according to
 Michael A. Dirr, Manual of
 Woody Landscape Plants

Planting Bed
 Shrub Planting Bed
 Turf
 Concrete Monolithic Curb
 Concrete
 Retaining Wall
 Fence
 Bike Rack Anchor to Concrete
 Fire Hydrant
 FD Siamese Connection
 Light Standard

**BELOW GRADE SERVICES REFER
 TO CIVIL/CUP**

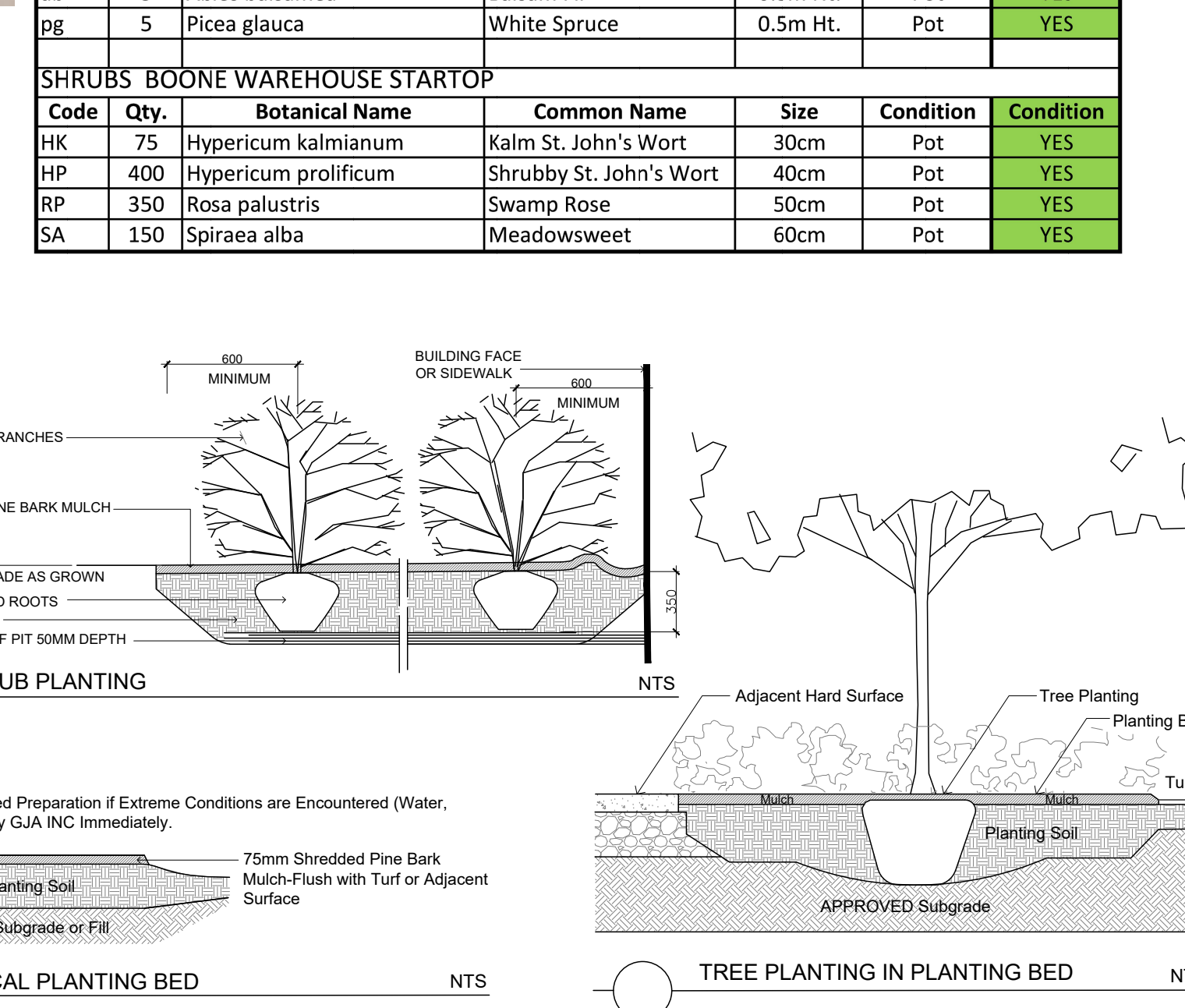
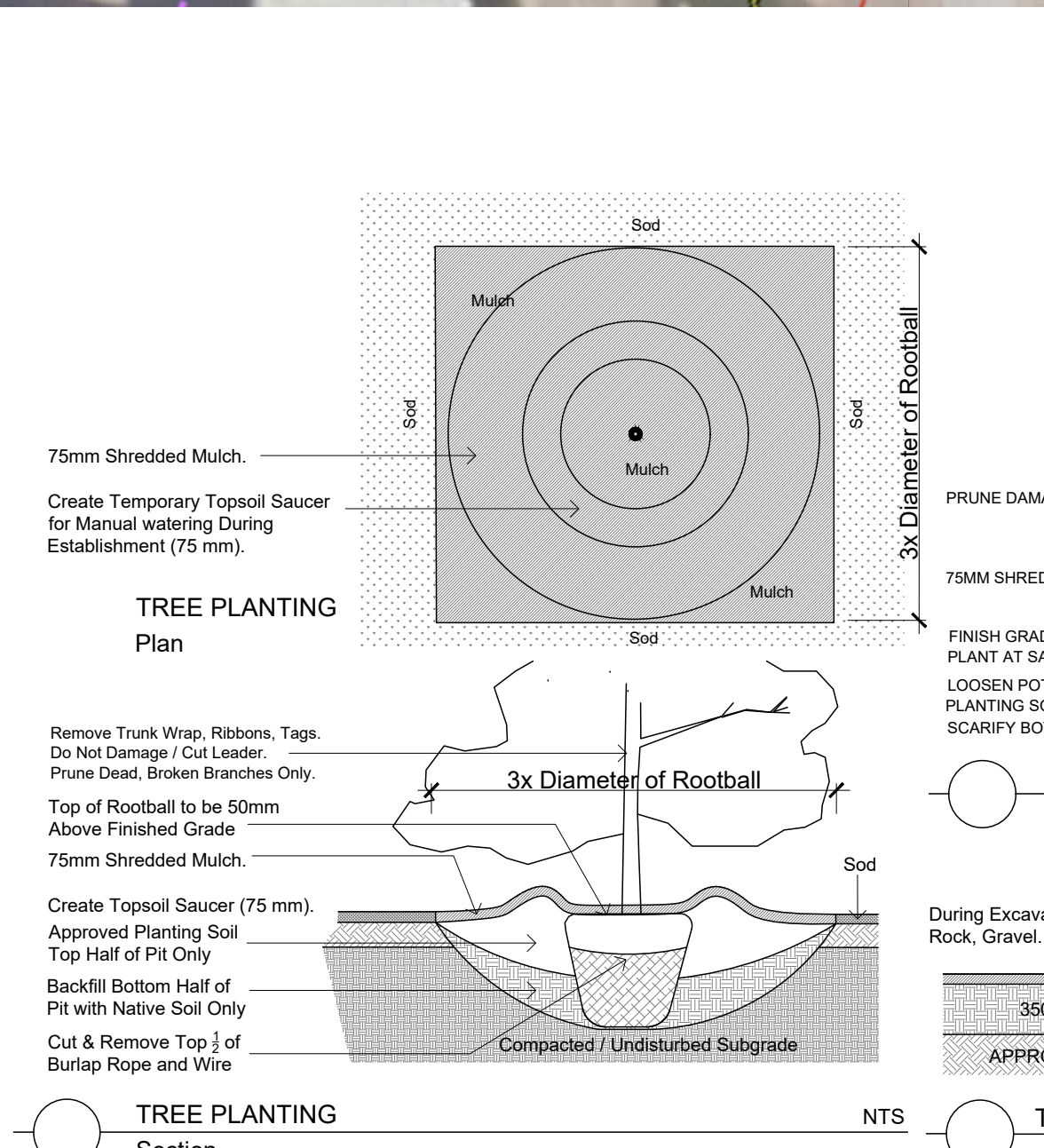
WTR U/G Water Service
 STM U/G Storm Service
 SAN U/G Sanitary Service
 GAS U/G Gas Service
 BC U/G TelCo Service
 H U/G Hydro Service
 OHW O/H Hydro Service

Circum Bicycle Rack
 PS-76-101-TP - Circum Bike Rack

Our Circum Bicycle Rack features a welded tubular and flat-bar steel construction. It is available in your choice of Hauser® powder-coated finishes or Hauser® ELD™ Thermoplastic finishes.

Depth: 2" (51mm)
 Diameter: 24" (610mm)
 Height: 33" (838mm)
 Weight: 21.2 lbs (9.6kg)

HAUSER SITE FURNITURE
 sales@hausersite.com
 800-268-7328
 hausersite.com



4457315 CANADA INC.
 3901 RUE JARRY # 250 MONTREAL QUEBEC H1Z 2S1

GJA INC.
 GINO J. AIELLO | LANDSCAPE ARCHITECT
 GJAL.COM | 613 286 5130 | GINO@GJAL.COM
 100 BURNHAMTHORPE RD UNIT # 11 | ST. CATHARINES ONT L7R 5C2

NEW WAREHOUSE BOONE

1540 / 1560 STAR TOP ROAD OTTAWA

Landscape Plan
 L1
 Scale: 1:400

PC2023 0219