

\*\*\*\*ADDITIONAL LANDSCAPE PLAN NOTES\*\*\*\*  
 LANDSCAPING ON CITY OF OTTAWA PROPERTY TO BE TO CITY OF OTTAWA DETAILS / STANDARDS. L1-L6, L17  
 TREES ON CITY OF OTTAWA PROPERTY TO CARRY A 2 YEAR WARRANTY.  
 REFER TO SITE PLAN FOR LOCATIONS AND DIMENSIONS OF BUILDING, ROADS, PARKING, CURBS, SETBACKS,  
 EASEMENTS, LEGAL DESCRIPTION.  
 EXISTING AND PROPOSED SITE SERVICING IS SHOWN ON THE LANDSCAPE PLAN TO PROVIDE AN AWARENESS TO  
 REVIEWERS AND CONTRACTORS OF THEIR INTENDED LOCATION AND SEPARATION OF TREES/SERVICES/PROPOSED  
 LANDSCAPING. DETERMINE AS BUILT LOCATIONS OF SERVICES PRIOR TO PLANTING AND ADJUST ACCORDINGLY TO  
 REQUIRED SETBACKS

**CONSULTANT TEAM**

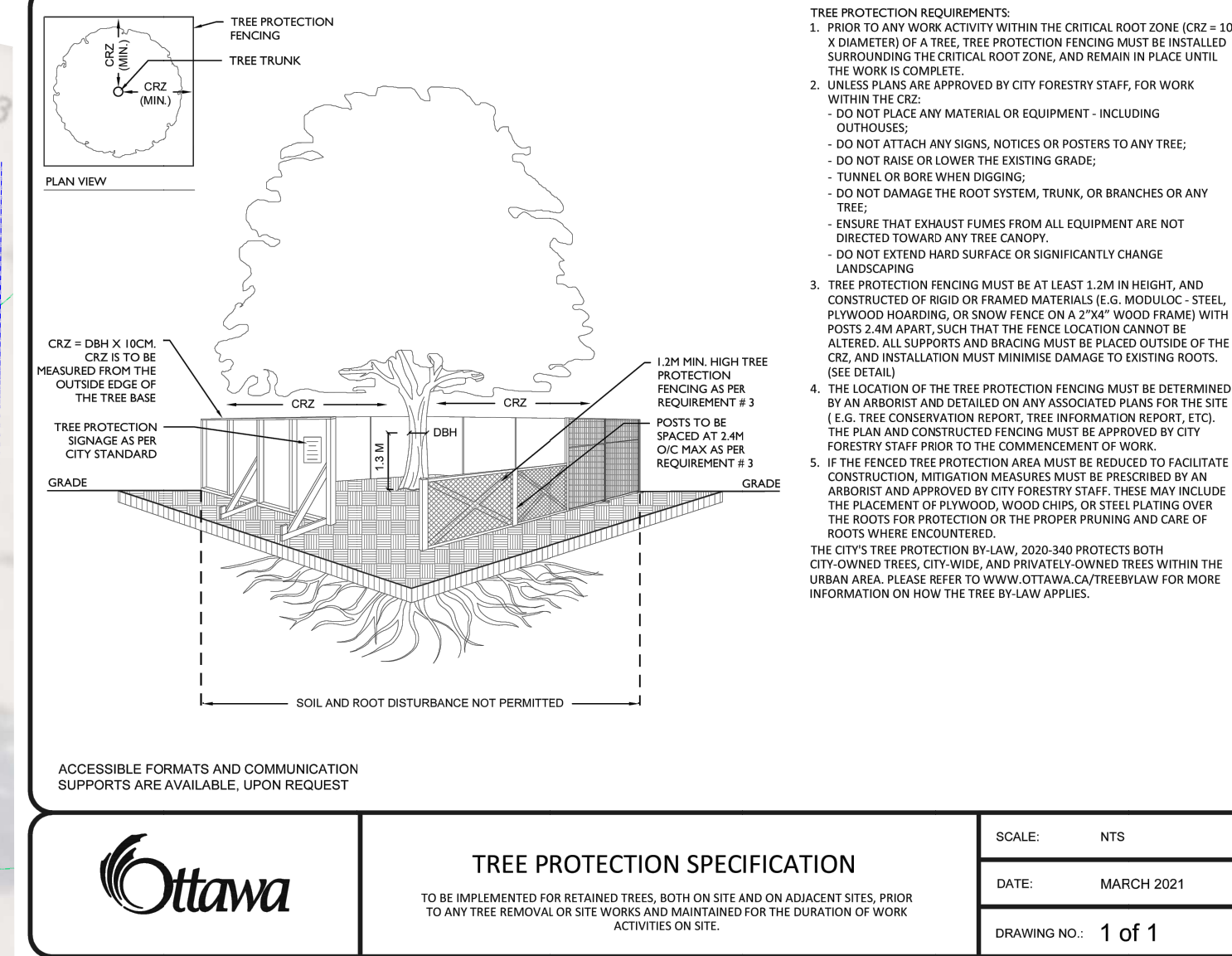
DESIGN BUILDER:	BBS CONSTRUCTION INC.	(613) 228-8530
ARCHITECT:	SEMLING ARCHITECTURE & INTERIOR DESIGN	(613) 697-6113
TRANSFORMATION, PLANNING AND CIVIL:	MONTOSH PERRY CONSULTING ENGINEERS	(613) 836-2154
LANDSCAPE ARCHITECT:	GJA INC.	(613) 296-5130
GEOTECHNICAL AND ENVIRONMENTAL:	PATERSON GROUP INC.	(613) 226-7381
SURVEYOR:	MONTOSH PERRY SURVEYING INC.	(613) 287-6524
ENVIRONMENTAL PLANNING:	MUNCASTER ENVIRONMENTAL PLANNING INC.	(613) 748-3753

**CITY OF OTTAWA**  
 LANDSCAPING STANDARD DRAWINGS  
 TABLE OF CONTENTS

01	Planting Symbols and Standards
02	Planting Protection
03	Planting Soil
04	Planting Methods
05	Planting Maintenance
06	Planting Watering
07	Planting Mulch
08	Planting Fencing
09	Planting Protection Zones
10	Planting Protection Details
11	Planting Protection Signs
12	Planting Protection Schedules
13	Planting Protection Specifications
14	Planting Protection Riparian Planting
15	Planting Protection Shrub Planting
16	Planting Protection Tree Planting
17	Planting Protection Tree Planting in Planting Bed
18	Planting Protection Tree Planting in Planting Bed
19	Planting Protection Tree Planting in Planting Bed
20	Planting Protection Tree Planting in Planting Bed
21	Planting Protection Tree Planting in Planting Bed
22	Planting Protection Tree Planting in Planting Bed
23	Planting Protection Tree Planting in Planting Bed
24	Planting Protection Tree Planting in Planting Bed
25	Planting Protection Tree Planting in Planting Bed
26	Planting Protection Tree Planting in Planting Bed
27	Planting Protection Tree Planting in Planting Bed
28	Planting Protection Tree Planting in Planting Bed
29	Planting Protection Tree Planting in Planting Bed
30	Planting Protection Tree Planting in Planting Bed



Drawing Released by Property of Copyright Reserved by GJA INC. Do Not Use or Reproduce Without Approval of Gino J. Aiello.  
 Contractor is Responsible for Verification of Site Locations of all Utilities. Report any Discrepancies Between Site and Drawing Immediately to Gino J. Aiello. Do NOT Proceed Until Clarified.  
 TURF AREAS TO BE 500 C/W 150MM DEPTH TOPSOIL ON APPROVED SUBGRADE | SOD TO BE #1 GRADE TURFGRASS NURSERY SOG PER NSGA - Fine Fescue/Kentucky Bluegrass Sod | PLANTING MIX TO BE APPROVED BY LANDSCAPE ARCHITECT | PLANT MATERIAL TO MEET CANL STANDARDS/BE APPROVED BY LANDSCAPE ARCHITECT PRIOR TO PLANTING | ALL MATERIALS & WORK TO BE MAINTAINED UNTIL FINAL ACCEPTANCE. (MOWING TURF, WEEDING BEDS, WATERING TURF & PLANTS) & INCLUDE 1 YEAR WARRANTY FROM DATE OF FINAL ACCEPTANCE | PROVIDE WATERING OF ALL PLANT MATERIAL AS REQUIRED FOR PROPER ESTABLISHMENT, UNTIL END OF WARRANTY PERIOD | REFER TO CIVIL ENGINEER'S DRAWING FOR ELEVATIONS / GRADING |  
 The Landscape Plan is to be read in conjunction with the grading, servicing, site and survey plan | Bare root material to be planted in season only | All plant material locations to be staked on site by the landscape contractor and checked by the landscape architect prior to planting | All trees to be preserved or directly adjacent to the site will be protected | Plant material are to be installed a minimum of 3.0m away from any part of any hydro transformer, 3.0m corridor between a fire hydrant and the curb, a 2.5m radius beside or behind a fire hydrant, 2.0m from any servicing/utility line or structure



**TREE PROTECTION SPECIFICATION**

SCALE: NTS  
 DATE: MARCH 2021  
 DRAWING NO.: 1 of 1

**TREE SCHEDULE - BBS CONSTRUCTION 1540 / 60 STARTOP ROAD BOONE WAREHOUSE**

CODE	QTY	BOTANICAL NAME	COMMON NAME	B&B SPECIMEN	SPREAD	NATIVE
AR	8	Acer rubrum	Red Maple	50mm cal	12M	YES
AS	8	Acer saccharum	Sugar Maple	50mm cal	15M	YES
AG	3	Aesculus glabra	Ohio Buckeye	50mm cal	10M	YES
BP	1	Betula papyrifera	Paper Birch	50mm cal	10M	YES
CO	7	Celtis occidentalis	Common Hackberry	50mm cal	18M	YES
GD	3	Gymnocladus dioica	Kentucky Coffee Tree	50mm cal	12M	YES
QM	2	Quercus macrocarpa	Bur Oak	50mm cal	20M	YES
QR	6	Quercus rubra	Red Oak	50mm cal	15M	YES
<b>TOTALS</b>	<b>38</b>	<b>4</b>				
AB	1	Abies balsamea	Balsam Fir	1.5m Ht.	N/A	YES
JV	5	Juniperus virginiana	Eastern Red Cedar	1.5m Ht.	N/A	YES
LL	1	Larix laricina	Eastern Larch / Tamarack	1.5m Ht.	N/A	YES
PS	1	Pinus strobus	White Pine	1.5m Ht.	N/A	YES

- TCR - REFER TO REPORT BY IFS
- Existing Tree to Remain CRZ
  - Existing Tree to Remove Protection for Existing Trees
- LANDSCAPE PLAN LEGEND**
- Coniferous Tree symbol 3.0m diameter
  - Deciduous Tree symbol 6.0m diameter
  - 40 Year Outlook according to Michael A. Dirr, Manual of Woody Landscape Plants
  - Planting Bed
  - Shrub Planting Bed
  - Turf
  - Concrete Monolithic Curb
  - Concrete
  - Retaining Wall
  - Fence
  - Bike Rack Anchor to Concrete
  - Fire Hydrant
  - FD Siamese Connection
  - Light Standard
- BELOW GRADE SERVICES REFER TO CIVIL/CUP**
- WTR - U/G Water Service
  - STM - U/G Storm Service
  - SAN - U/G Sanitary Service
  - GAS - U/G Gas Service
  - BC - U/G TelCo Service
  - H - U/G Hydro Service
  - OHW - O/H Hydro Service
- PROPERTY LINE  
 EASEMENT LINE

**RIPARIAN PLANTING PER EIS BOONE WAREHOUSE STARTOP**

Code	Qty.	Botanical Name	Common Name	Size	Condition	NATIVE
ac	5	Amelanchier canadensis	Tree Serviceberry	1.0m Ht.	Pot	YES
as	5	Acer saccharum	Sugar Maple	1.0m Ht.	Pot	YES
cr	5	Cornus racemosa	Grey Dogwood	1.0m Ht.	Pot	YES
vt	5	Viburnum lentago	Nannyberry	1.0m Ht.	Pot	YES
ta	5	Tilia americana	Basswood	1.0m Ht.	Pot	YES
ab	5	Abies balsamea	Balsam Fir	0.5m Ht.	Pot	YES
pg	5	Picea glauca	White Spruce	0.5m Ht.	Pot	YES

**SHRUBS BOONE WAREHOUSE STARTOP**

Code	Qty.	Botanical Name	Common Name	Size	Condition	Condition
HK	75	Hypericum kalmianum	Kalm St. John's Wort	30cm	Pot	YES
HP	400	Hypericum prolificum	Shrubby St. John's Wort	40cm	Pot	YES
RP	350	Rosa palustris	Swamp Rose	50cm	Pot	YES
SA	150	Spiraea alba	Meadowsweet	60cm	Pot	YES

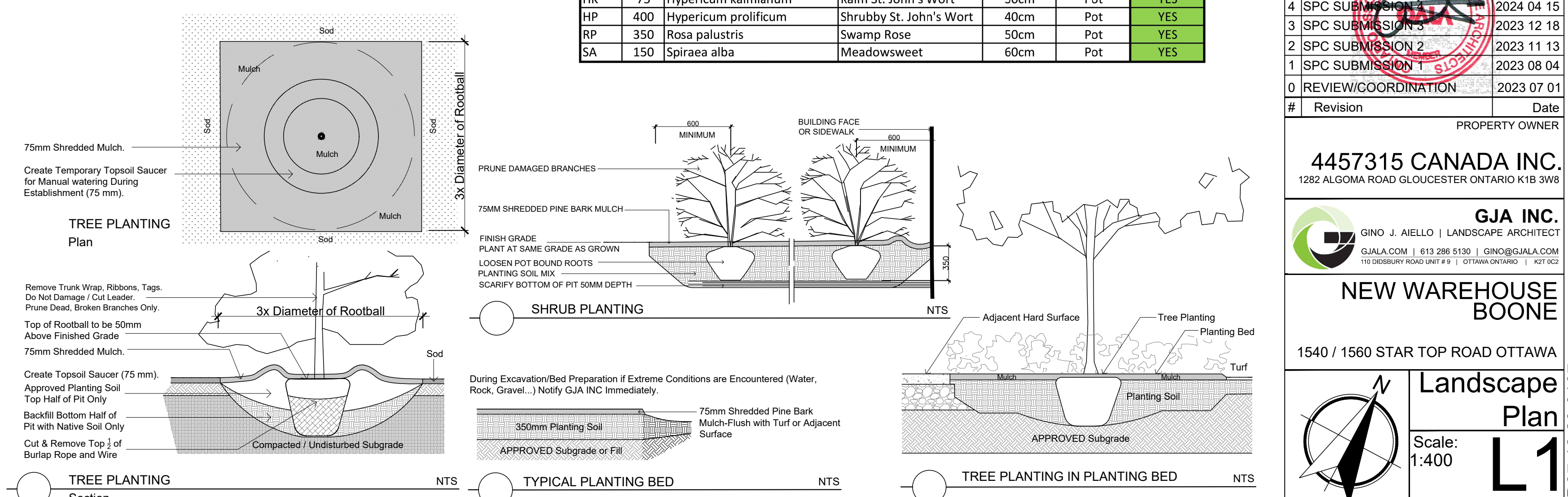
**Circum Bicycle Rack**  
 PS-76-101-TP - Circum Bike Rack

Our Circum Bicycle Rack features a welded tubular and flat-bar steel construction. It is available in your choice of Hauser's® powder-coated finishes or Hauser's® EPOXY Thermoplastic finishes.

Depth: 2" (5.1cm)  
 Diameter: 24" (61.0cm)  
 Height: 33" (83.8cm)  
 Weight: 21.2 (46.8) kg

**HAUSER SITE FURNITURE**

sales@hausersite.com  
 800-268-7328  
 hausersite.com



ORIGINAL DATE OF PLAN 2023 0701

#	Revision/COORDINATION	Date
5	LATEST	2024 08 15
4	SPC SUBMISSION 3	2024 04 15
3	SPC SUBMISSION 3	2023 12 18
2	SPC SUBMISSION 2	2023 11 13
1	SPC SUBMISSION 1	2023 08 04
0	REVIEW/COORDINATION	2023 07 01

PROPERTY OWNER  
 4457315 CANADA INC.  
 1282 ALGOMA ROAD GLOUCESTER ONTARIO K1B 3W8

**GJA INC.**  
 GINO J. AIELLO | LANDSCAPE ARCHITECT  
 GJALA.COM | 613 286 5130 | GINO@GJALA.COM  
 115 BEECHWOOD ROAD UNIT #11 | ST. CATHARINES | ONT. L2R 6Z2

**NEW WAREHOUSE BOONE**

1540 / 1560 STAR TOP ROAD OTTAWA

**Landscape Plan**  
 Scale: 1:400  
 DWG # 19125