

*****ADDITIONAL LANDSCAPE PLAN NOTES*****
 LANDSCAPING ON CITY OF OTTAWA PROPERTY TO BE TO CITY OF OTTAWA DETAILS / STANDARDS. L1-L6, L17
 TREES ON CITY OF OTTAWA PROPERTY TO CARRY A 2 YEAR WARRANTY.
 REFER TO SITE PLAN FOR LOCATIONS AND DIMENSIONS OF BUILDING, ROADS, PARKING, CURBS, SETBACKS,
 EASEMENTS, LEGAL DESCRIPTION.
 EXISTING AND PROPOSED SITE SERVICING IS SHOWN ON THE LANDSCAPE PLAN TO PROVIDE AN AWARENESS TO
 REVIEWERS AND CONTRACTORS OF THEIR INTENDED LOCATION AND SEPARATION OF TREES/SERVICES/PROPOSED
 LANDSCAPING. DETERMINE AS BUILT LOCATIONS OF SERVICES PRIOR TO PLANTING AND ADJUST ACCORDINGLY TO
 REQUIRED SETBACKS

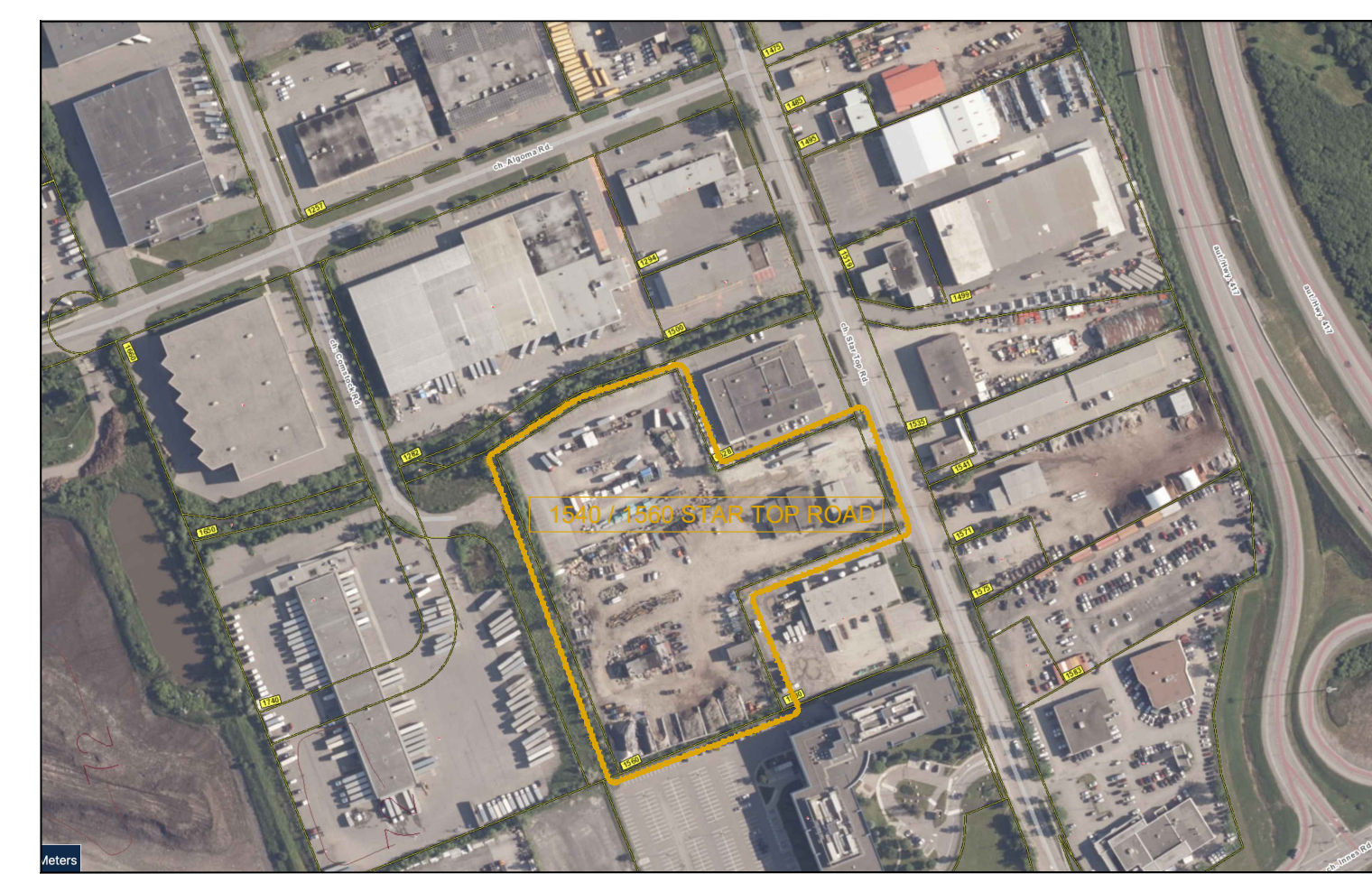
CONSULTANT TEAM

DESIGN BUILDER: BBS CONSTRUCTION INC.	(513) 228-8530
ARCHITECT: DESIGNING ARCHITECTURE & INTERIOR DESIGN	(613) 697-6113
TRANSFORMATION, PLANNING AND CIVIL: MONTOSH PERRY CONSULTING ENGINEERS	(613) 836-2154
LANDSCAPE ARCHITECT: GJA INC.	(613) 296-5130
GEOTECHNICAL AND ENVIRONMENTAL: PATTERSON GROUP INC.	(613) 226-7381
SURVEYOR: MONTOSH PERRY SURVEYING INC.	(613) 287-6524
ENVIRONMENTAL PLANNING: MUNCASTER ENVIRONMENTAL PLANNING INC.	(613) 748-3753

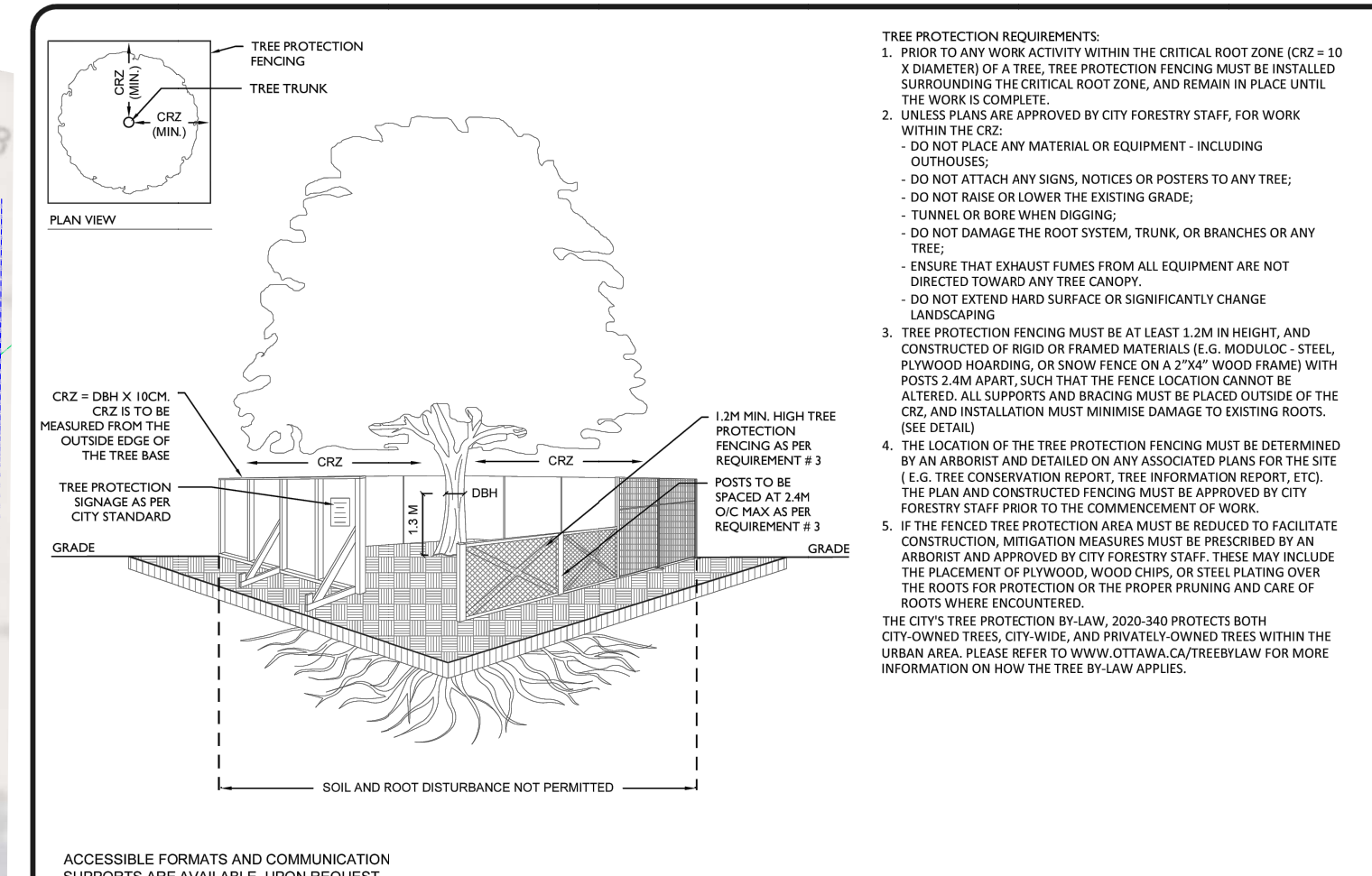
**CITY OF OTTAWA
 LANDSCAPING STANDARD DETAIL DRAWINGS**

TABLE OF CONTENTS

L1	Planting Tree: Small (100-150mm)
L2	Planting Tree: Medium (150-200mm)
L3	Planting Tree: Large (200-250mm)
L4	Planting Tree: Very Large (250-300mm)
L5	Planting Tree: Mature (300-350mm)
L6	Planting Tree: Old (350-400mm)
L7	Planting Tree: Ancient (400-450mm)
L8	Planting Tree: Historic (450-500mm)
L9	Planting Tree: Monumental (500-550mm)
L10	Planting Tree: Immense (550-600mm)
L11	Planting Tree: Colossal (600-650mm)
L12	Planting Tree: Gigantic (650-700mm)
L13	Planting Tree: Massive (700-750mm)
L14	Planting Tree: Huge (750-800mm)
L15	Planting Tree: Enormous (800-850mm)
L16	Planting Tree: Tremendous (850-900mm)
L17	Planting Tree: Colossal (900-950mm)
L18	Planting Tree: Immense (950-1000mm)
L19	Planting Tree: Massive (1000-1050mm)
L20	Planting Tree: Gigantic (1050-1100mm)
L21	Planting Tree: Massive (1100-1150mm)
L22	Planting Tree: Gigantic (1150-1200mm)
L23	Planting Tree: Massive (1200-1250mm)
L24	Planting Tree: Gigantic (1250-1300mm)
L25	Planting Tree: Massive (1300-1350mm)
L26	Planting Tree: Gigantic (1350-1400mm)
L27	Planting Tree: Massive (1400-1450mm)
L28	Planting Tree: Gigantic (1450-1500mm)
L29	Planting Tree: Massive (1500-1550mm)
L30	Planting Tree: Gigantic (1550-1600mm)
L31	Planting Tree: Massive (1600-1650mm)
L32	Planting Tree: Gigantic (1650-1700mm)
L33	Planting Tree: Massive (1700-1750mm)
L34	Planting Tree: Gigantic (1750-1800mm)
L35	Planting Tree: Massive (1800-1850mm)
L36	Planting Tree: Gigantic (1850-1900mm)
L37	Planting Tree: Massive (1900-1950mm)
L38	Planting Tree: Gigantic (1950-2000mm)
L39	Planting Tree: Massive (2000-2050mm)
L40	Planting Tree: Gigantic (2050-2100mm)
L41	Planting Tree: Massive (2100-2150mm)
L42	Planting Tree: Gigantic (2150-2200mm)
L43	Planting Tree: Massive (2200-2250mm)
L44	Planting Tree: Gigantic (2250-2300mm)
L45	Planting Tree: Massive (2300-2350mm)
L46	Planting Tree: Gigantic (2350-2400mm)
L47	Planting Tree: Massive (2400-2450mm)
L48	Planting Tree: Gigantic (2450-2500mm)
L49	Planting Tree: Massive (2500-2550mm)
L50	Planting Tree: Gigantic (2550-2600mm)
L51	Planting Tree: Massive (2600-2650mm)
L52	Planting Tree: Gigantic (2650-2700mm)
L53	Planting Tree: Massive (2700-2750mm)
L54	Planting Tree: Gigantic (2750-2800mm)
L55	Planting Tree: Massive (2800-2850mm)
L56	Planting Tree: Gigantic (2850-2900mm)
L57	Planting Tree: Massive (2900-2950mm)
L58	Planting Tree: Gigantic (2950-3000mm)
L59	Planting Tree: Massive (3000-3050mm)
L60	Planting Tree: Gigantic (3050-3100mm)
L61	Planting Tree: Massive (3100-3150mm)
L62	Planting Tree: Gigantic (3150-3200mm)
L63	Planting Tree: Massive (3200-3250mm)
L64	Planting Tree: Gigantic (3250-3300mm)
L65	Planting Tree: Massive (3300-3350mm)
L66	Planting Tree: Gigantic (3350-3400mm)
L67	Planting Tree: Massive (3400-3450mm)
L68	Planting Tree: Gigantic (3450-3500mm)
L69	Planting Tree: Massive (3500-3550mm)
L70	Planting Tree: Gigantic (3550-3600mm)
L71	Planting Tree: Massive (3600-3650mm)
L72	Planting Tree: Gigantic (3650-3700mm)
L73	Planting Tree: Massive (3700-3750mm)
L74	Planting Tree: Gigantic (3750-3800mm)
L75	Planting Tree: Massive (3800-3850mm)
L76	Planting Tree: Gigantic (3850-3900mm)
L77	Planting Tree: Massive (3900-3950mm)
L78	Planting Tree: Gigantic (3950-4000mm)
L79	Planting Tree: Massive (4000-4050mm)
L80	Planting Tree: Gigantic (4050-4100mm)
L81	Planting Tree: Massive (4100-4150mm)
L82	Planting Tree: Gigantic (4150-4200mm)
L83	Planting Tree: Massive (4200-4250mm)
L84	Planting Tree: Gigantic (4250-4300mm)
L85	Planting Tree: Massive (4300-4350mm)
L86	Planting Tree: Gigantic (4350-4400mm)
L87	Planting Tree: Massive (4400-4450mm)
L88	Planting Tree: Gigantic (4450-4500mm)
L89	Planting Tree: Massive (4500-4550mm)
L90	Planting Tree: Gigantic (4550-4600mm)
L91	Planting Tree: Massive (4600-4650mm)
L92	Planting Tree: Gigantic (4650-4700mm)
L93	Planting Tree: Massive (4700-4750mm)
L94	Planting Tree: Gigantic (4750-4800mm)
L95	Planting Tree: Massive (4800-4850mm)
L96	Planting Tree: Gigantic (4850-4900mm)
L97	Planting Tree: Massive (4900-4950mm)
L98	Planting Tree: Gigantic (4950-5000mm)
L99	Planting Tree: Massive (5000-5050mm)
L100	Planting Tree: Gigantic (5050-5100mm)



Drawing Represents the Property of/Ownership Reserved by GJA INC. Do Not Use or Reproduce Without Approval of Gino J. Aiello.
Contractor is Responsible for Verification of Site Locations of all Utilities. Report any Discrepancies Between Site and Drawing Immediately to Gino J. Aiello. Do NOT Proceed Until Clarified.
 TURF AREAS TO BE 500 CW 150MM DEPTH TOPSOIL ON APPROVED SUBGRADE | SOD TO BE #1 GRADE TURFGRASS NURSERY SOD per NSGA - Fine Fescue/Kentucky Bluegrass Sod | PLANTING MIX TO BE APPROVED BY LANDSCAPE ARCHITECT | PLANT MATERIAL TO MEET CANL STANDARDS/BE APPROVED BY LANDSCAPE ARCHITECT PRIOR TO PLANTING | ALL MATERIALS & WORK TO BE MAINTAINED UNTIL FINAL ACCEPTANCE. (MOWING TURF, WEEDING BEDS, WATERING TURF & PLANTS) & INCLUDE 1 YEAR WARRANTY FROM DATE OF FINAL ACCEPTANCE | PROVIDE WATERING OF ALL PLANT MATERIAL AS REQUIRED FOR PROPER ESTABLISHMENT, UNTIL END OF WARRANTY PERIOD | REFER TO CIVIL ENGINEER'S DRAWING FOR ELEVATIONS / GRADING |
 The Landscape Plan is to be read in conjunction with the grading, servicing, site and survey plan | Bare root material to be planted in season only | All plant material locations to be staked on site by the landscape contractor and checked by the landscape architect prior to planting | All trees to be preserved or directly adjacent to the site will be protected | Plant material are to be installed a minimum of 3.0m away from any part of any hydro transformer, 3.0m corridor between a fire hydrant and the curb, a 2.5m radius beside or behind a fire hydrant, 2.0m from any servicing/utility line or structure |



TREE PROTECTION SPECIFICATION

SCALE: NTS
 DATE: MARCH 2021
 DRAWING NO.: 1 of 1

TREE SCHEDULE - BBS CONSTRUCTION 1540 / 60 STARTOP ROAD BOONE WAREHOUSE

CODE	QTY	BOTANICAL NAME	COMMON NAME	B&B SPECIMEN	SPREAD	NATIVE
AR	8	Acer rubrum	Red Maple	50mm cal	12M	YES
AS	8	Acer saccharum	Sugar Maple	50mm cal	15M	YES
AG	3	Aesculus glabra	Ohio Buckeye	50mm cal	10M	YES
BP	1	Betula papyrifera	Paper Birch	50mm cal	10M	YES
CO	7	Celtis occidentalis	Common Hackberry	50mm cal	18M	YES
GD	3	Gymnocladus dioica	Kentucky Coffee Tree	50mm cal	12M	YES
QM	2	Quercus macrocarpa	Bur Oak	50mm cal	20M	YES
QR	6	Quercus rubra	Red Oak	50mm cal	15M	YES
TOTALS	38	4				
AB	1	Abies balsamea	Balsam Fir	1.5m Ht.	N/A	YES
JV	5	Juniperus virginiana	Eastern Red Cedar	1.5m Ht.	N/A	YES
LL	1	Larix laricina	Eastern Larch / Tamarack	1.5m Ht.	N/A	YES
PS	1	Pinus strobus	White Pine	1.5m Ht.	N/A	YES

RIPARIAN PLANTING PER EIS BOONE WAREHOUSE STARTOP

Code	Qty.	Botanical Name	Common Name	Size	Condition	NATIVE
ac	5	Amelanchier canadensis	Tree Serviceberry	1.0m Ht.	Pot	YES
as	5	Acer saccharum	Sugar Maple	1.0m Ht.	Pot	YES
cr	5	Cornus racemosa	Grey Dogwood	1.0m Ht.	Pot	YES
vt	5	Viburnum lentago	Nannyberry	1.0m Ht.	Pot	YES
ta	5	Tilia americana	Basswood	1.0m Ht.	Pot	YES
ab	5	Abies balsamea	Balsam Fir	0.5m Ht.	Pot	YES
pg	5	Picea glauca	White Spruce	0.5m Ht.	Pot	YES

SHRUBS BOONE WAREHOUSE STARTOP

Code	Qty.	Botanical Name	Common Name	Size	Condition	Condition
HK	75	Hypericum kalmianum	Kalm St. John's Wort	30cm	Pot	YES
HP	400	Hypericum prolificum	Shrubby St. John's Wort	40cm	Pot	YES
RP	350	Rosa palustris	Swamp Rose	50cm	Pot	YES
SA	150	Spiraea alba	Meadowsweet	60cm	Pot	YES

THIS SITE PLAN HAS BEEN BASED ON THE SURVEYOR'S PLAN OF SURVEY PREPARED BY MONTOSH PERRY SURVEYING INC. DATED JUNE 15th, 2023.
 PIN 04263-0186(L1)
 LEGAL DESCRIPTION:
 PART OF LOT 25, CONVESSION 2 (OTTAWA FRONT)
 GEOGRAPHIC TOWNSHIP OF GLOUCESTER
 CITY OF OTTAWA

TCR - REFER TO REPORT BY IFS

Existing Tree to Remain
 Existing Tree to Remove
 Protection for Existing Trees

LANDSCAPE PLAN LEGEND

Coniferous Tree symbol 3.0m diameter
 Deciduous Tree symbol 6.0m diameter
 40 Year Outlook according to Michael A. Dirr, Manual of Woody Landscape Plants
 Planting Bed
 Shrub Planting Bed
 Turf
 Concrete Monolithic Curb
 Concrete
 Retaining Wall
 Fence
 Bike Rack Anchor to Concrete
 Fire Hydrant
 FD Siamese Connection
 Light Standard

BELOW GRADE SERVICES REFER TO CIVIL/CUP

WTR U/G Water Service
 STM U/G Storm Service
 SAN U/G Sanitary Service
 GAS U/G Gas Service
 BC U/G TelCo Service
 H U/G Hydro Service
 OHW O/H Hydro Service

PROPERTY LINE
 EASEMENT LINE
 ORIGINAL DATE OF PLAN 2023 0701

7	per Servicing of 24 10 03	2024 10 08
6	per Servicing of 24 08 14	2024 09 26
5	LATEST	2024 08 15
4	SPC SUBMISSION 3	2024 04 15
3	SPC SUBMISSION 3	2023 12 18
2	SPC SUBMISSION 2	2023 11 13
1	SPC SUBMISSION 1	2023 08 04
0	REVIEW/COORDINATION	2023 07 01
#	Revision	Date

PROPERTY OWNER
4457315 CANADA INC.
 1282 ALGOMA ROAD GLOUCESTER ONTARIO K1B 3W8

GJA INC.
 GINO J. AIELLO | LANDSCAPE ARCHITECT
 GJALA.COM | 613 286 5130 | GINO@GJALA.COM
 115 BLOSSOM ROAD UNIT # 1, OTTAWA ONTARIO K1T 3C2

NEW WAREHOUSE BOONE
 1540 / 1560 STAR TOP ROAD OTTAWA

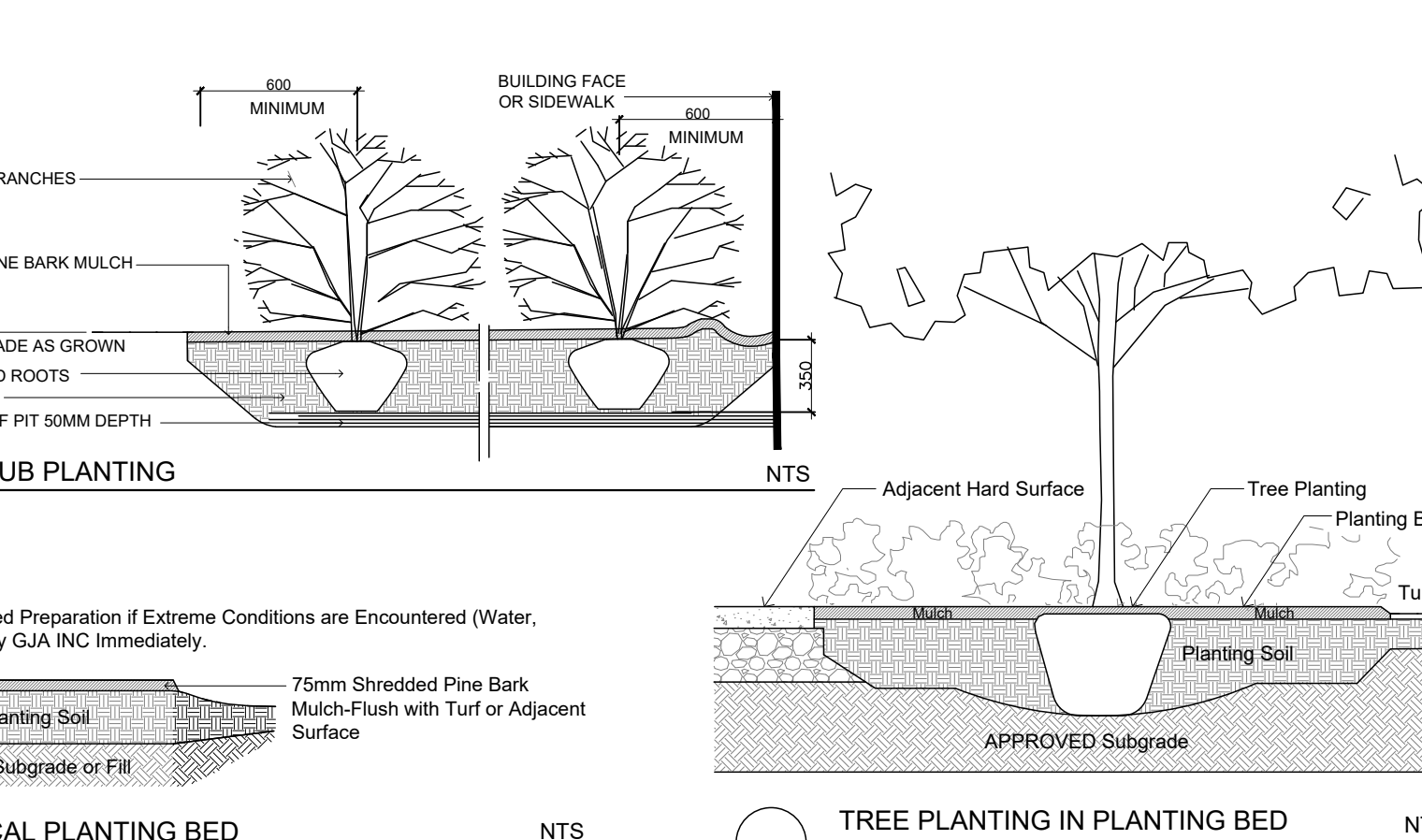
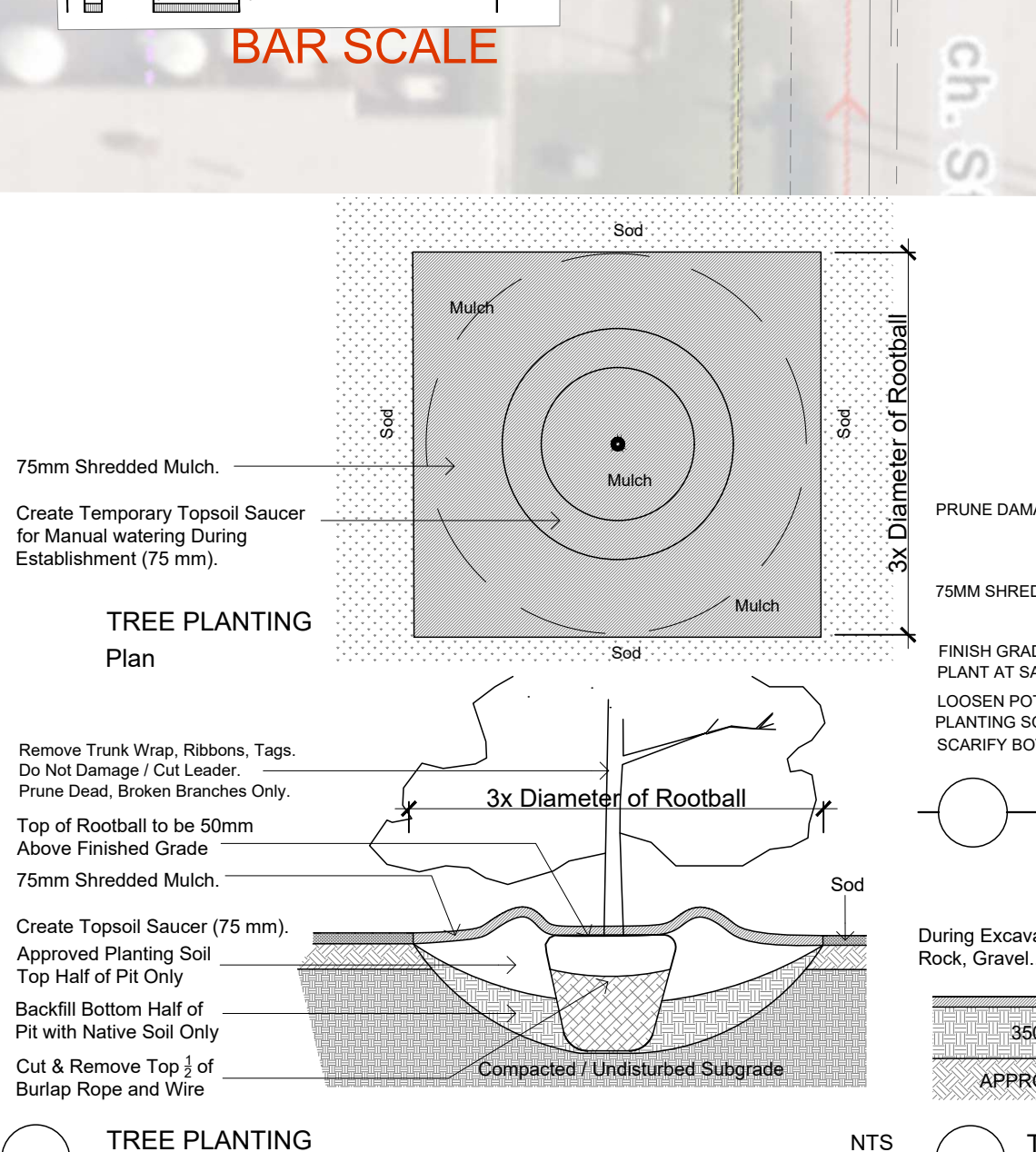
Landscape Plan
 Scale: 1:400
 DWG # 19125

Circum Bicycle Rack
 PS-76-101-TP - Circum Bike Rack

Our Circum Bicycle Rack features a welded tubular and fit-bar steel construction. It is available in your choice of Hauser's EPO powdercoat finishes, or Hauser's ELD Thermoplastic finishes.

Depth: 2" (51mm)
 Diameter: 24" (610mm)
 Height: 33" (838mm)
 Weight: 21.2 lbs (9.6kg)

HAUSER SITE FURNITURE
 sales@hausersite.com
 800-268-7328
 hausersite.com



D07 12 23 0107