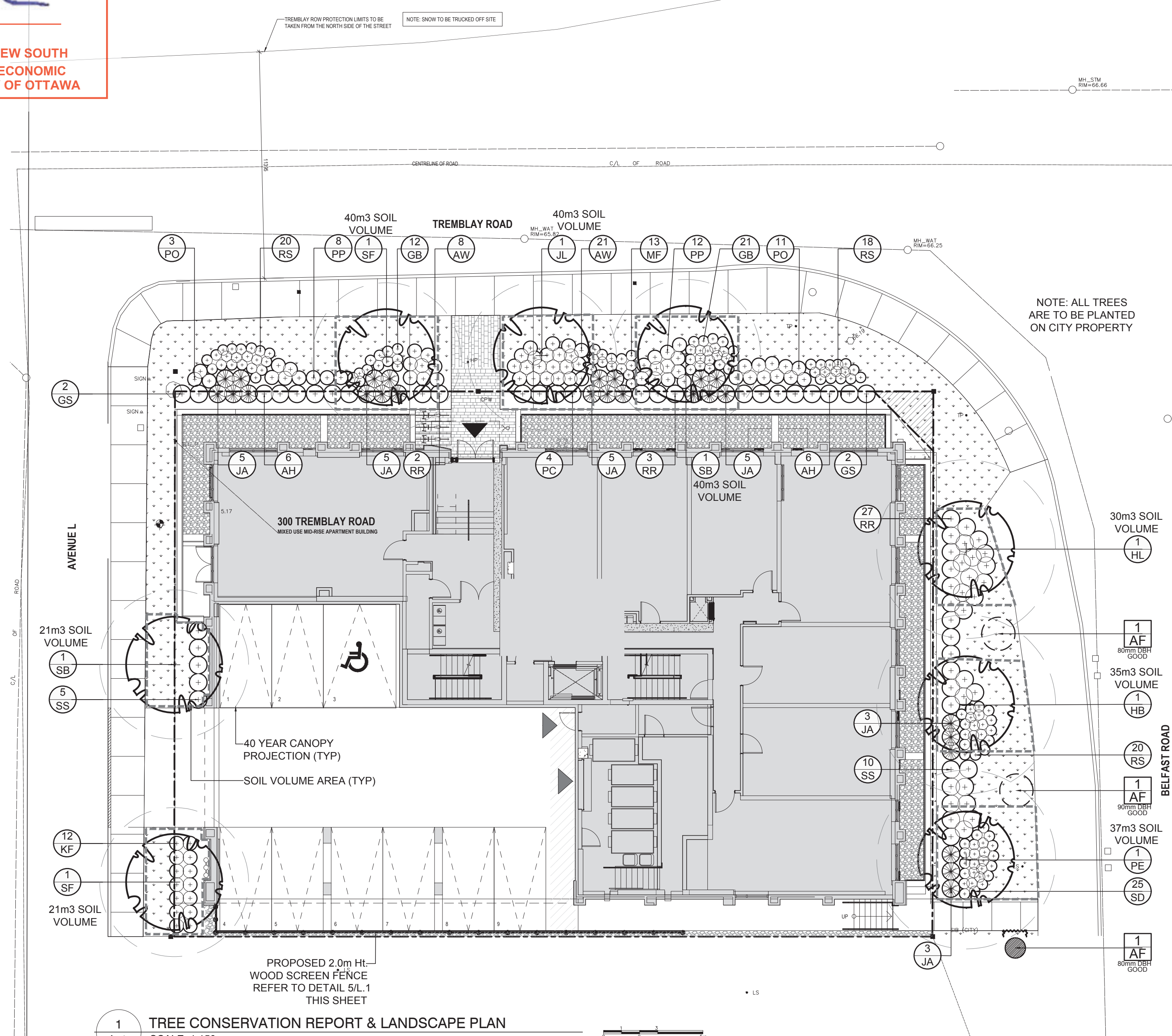


LILY XU, MCIP, RPP  
MANAGER, DEVELOPMENT REVIEW SOUTH  
PLANNING, INFRASTRUCTURE & ECONOMIC  
DEVELOPMENT DEPARTMENT, CITY OF OTTAWA

**APPROVED**  
By Lily Xu at 4:23 pm, Dec 12, 2023



1 TREE CONSERVATION REPORT & LANDSCAPE PLAN  
SCALE: 1:150

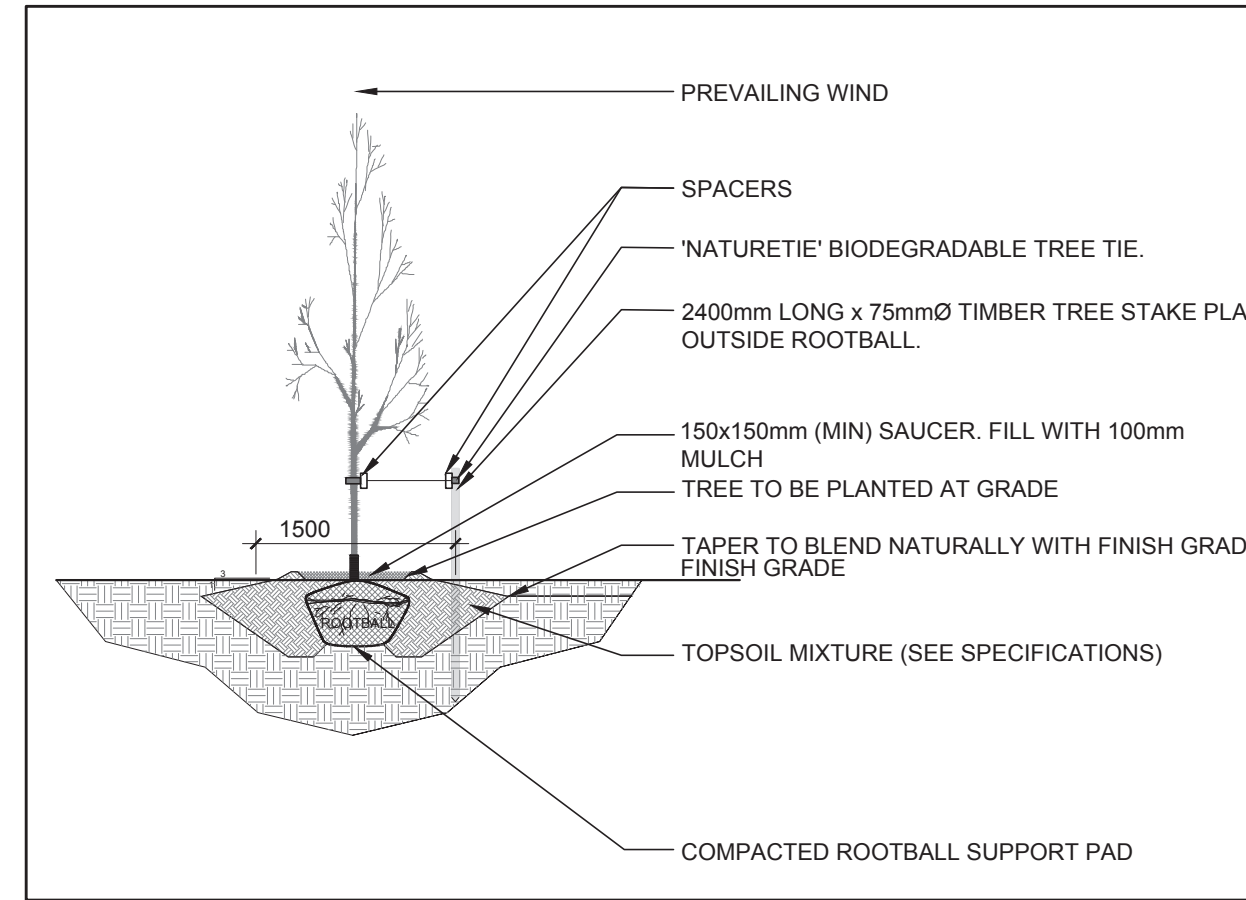
- GENERAL NOTES:**
- It is the responsibility of the appropriate contractor or official to report any errors, omissions or discrepancies on this plan with actual site conditions to the Landscape Architect before proceeding with construction.
  - The contractor is to notify all utility companies and authorities prior to any excavation and ascertain locations of underground services.
  - The contractor is to reinstate all areas and items damaged as a result of construction activity.
  - The contractor is to comply with all pertinent codes and by-laws.
  - The contractor is to maintain a positive surface run-off throughout the entire construction period.
  - The Landscape Architect is not responsible for subsurface conditions.
  - The contractor is to identify all existing trees to remain on site with the Landscape Architect prior to construction.
  - The contractor is to stake the proposed location of all plant material in conjunction with the Landscape Architect prior to excavation.
  - Minimum distances for selected deciduous trees are as follows:
    - Building Foundations 7.5m
    - Sidewalks 1.5m
    - Public Streets 2.5m
    - Underground Infrastructure 2.0m
  - All trees within 1m of underground utility trenches are to be excavated by hand.
  - Remove all protective wrapping from tree trunks after installation.
  - Staking of trees shall only be performed if necessary.
  - Ensure that mulch is pulled back a min. distance of 75mm from base of tree trunk.

**EXISTING TREE LIST**

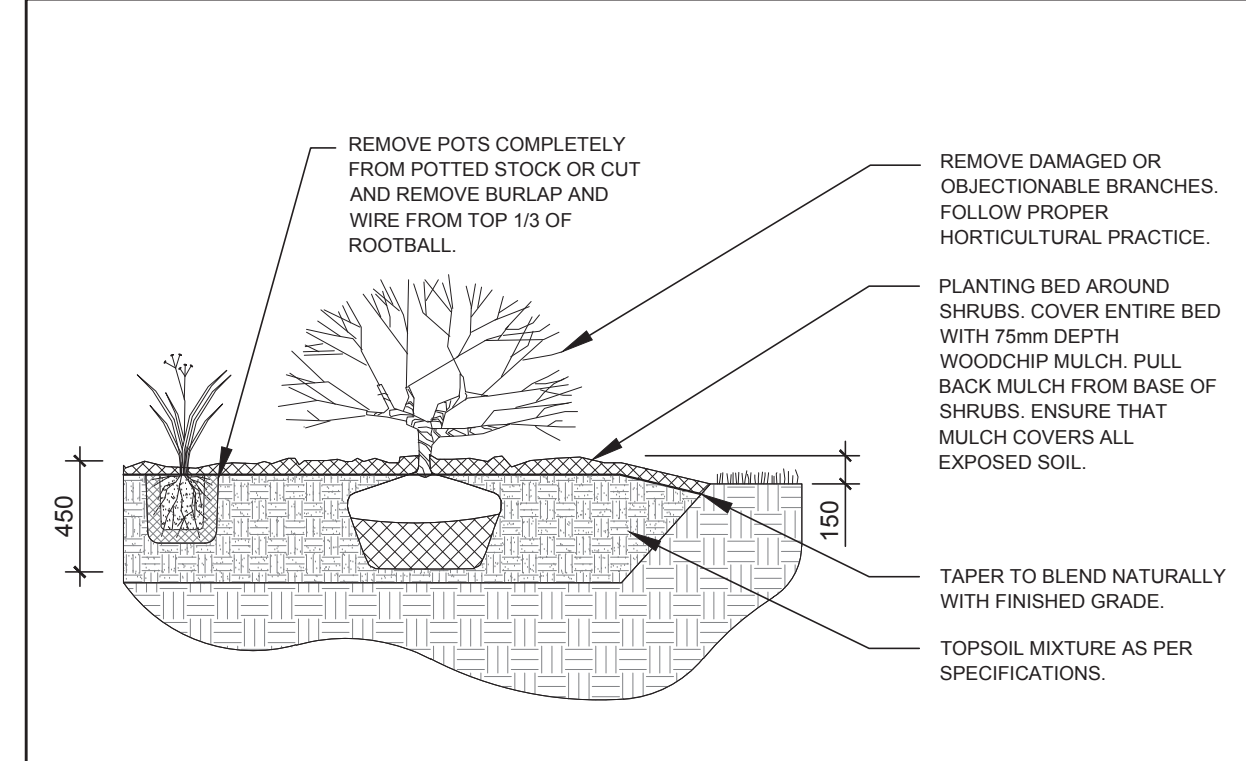
| KEY | QTY | BOTANICAL NAME   | COMMON NAME     | SIZE        | CONDITION | OWNERSHIP      |
|-----|-----|------------------|-----------------|-------------|-----------|----------------|
| AF  | 3   | Acer x freemanii | Freeman's Maple | 80-90mm DBH | Good      | City of Ottawa |

**PROPOSED PLANT LIST**

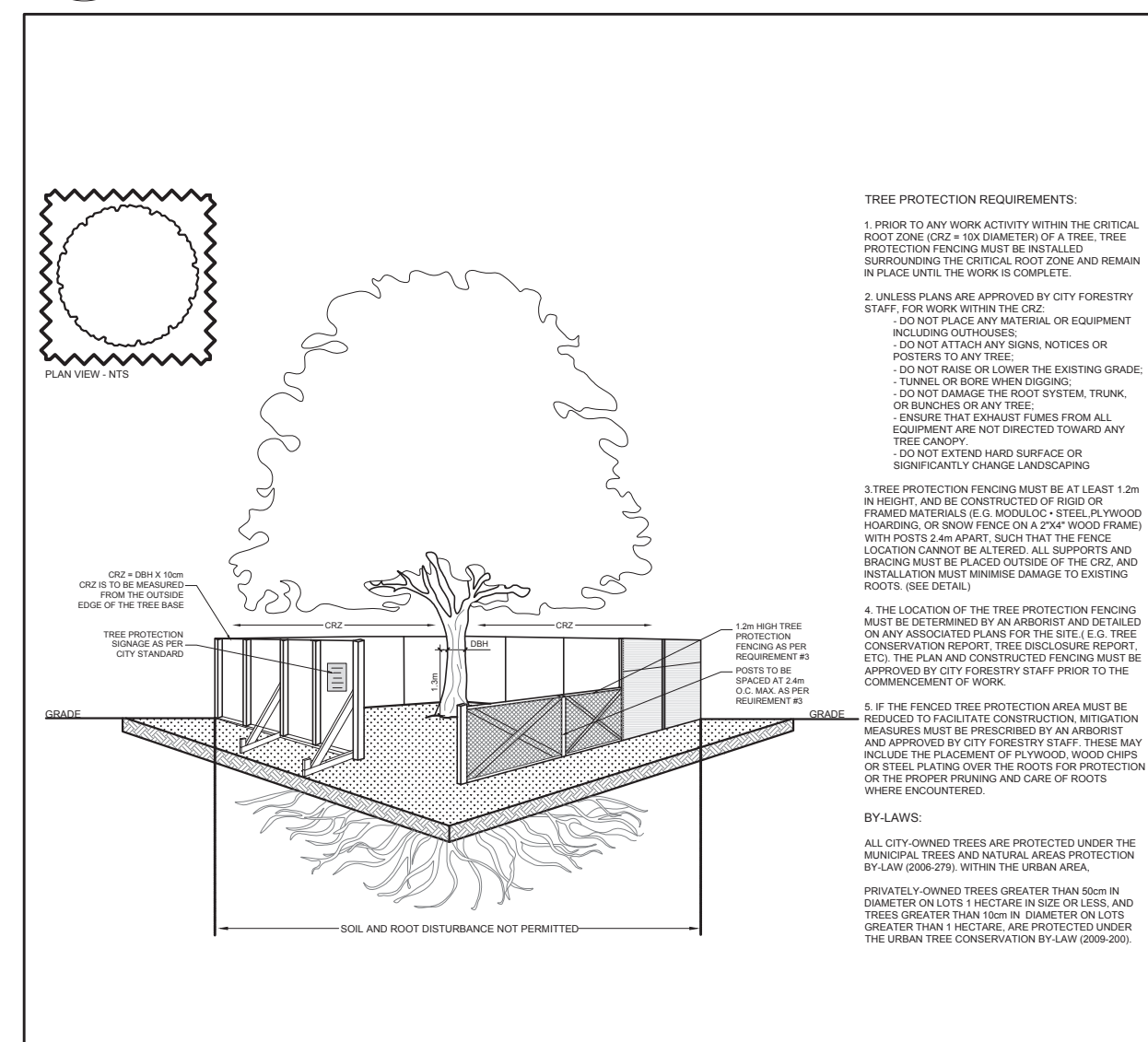
| KEY                                        | QTY | BOTANICAL NAME                     | COMMON NAME                | SIZE         | CONDITION | REMARKS       |
|--------------------------------------------|-----|------------------------------------|----------------------------|--------------|-----------|---------------|
| <b>TREES</b>                               |     |                                    |                            |              |           |               |
| HB                                         | 1   | Celtis occidentalis                | Hackberry                  | 50mm ø       | B&B       | Single leader |
| JL                                         | 1   | Syringa reticulata                 | Japanese Tree Lilac        | 50mm ø       | B&B       | Single leader |
| HL                                         | 1   | Gleditsia triacanthos 'Draves'     | Streetkeeper Honey Locust  | 50mm ø       | B&B       | Single leader |
| PE                                         | 1   | Ulmus wilsoniana 'Prospector'      | Hackberry                  | 50mm ø       | B&B       | Single leader |
| SB                                         | 2   | Ameilanchier canadensis            | Serviceberry               | 50mm ø       | B&B       | Single leader |
| SF                                         | 2   | Ameilanchier laevis 'JFS-ARB'      | Spring Flurry Serviceberry | 50mm ø       | B&B       | Single leader |
| <b>SHRUBS</b>                              |     |                                    |                            |              |           |               |
| AH                                         | 12  | Hydrangea arborescens 'Annabelle'  | Annabelle Hydrangea        | 1 gallon pot | Potted    | 800mm o.c.    |
| AW                                         | 29  | Spiraea japonica 'Anthony Waterer' | Anthony Waterer Spiraea    | 800mm ht.    | Potted    | 800mm o.c.    |
| GS                                         | 4   | Spiraea x arguta                   | Garland Spiraea            | 800mm ht.    | Potted    | 1200mm o.c.   |
| JA                                         | 26  | Juniperus sabina 'Tamariscifolia'  | Tamarix Juniper            | 600mm spr.   | Potted    | 1000 mm o.c.  |
| PC                                         | 4   | Cotoneaster acutifolius            | Peking Cotoneaster         | 800mm ht.    | Potted    | 800mm o.c.    |
| PO                                         | 14  | Potentilla fruticosa 'Goldfinger'  | Goldfinger Potentilla      | 600mm ht.    | Potted    | 800mm o.c.    |
| PP                                         | 20  | Spiraea japonica 'Little Princess' | Little Princess Spiraea    | 600mm ht.    | Potted    | 800mm o.c.    |
| RR                                         | 32  | Rosa rugosa                        | Rugosa Rose                | 800mm ht.    | Potted    | 1000mm o.c.   |
| SS                                         | 15  | Sorbaria sorbifolia 'Sem'          | Sem False Spiraea          | 600mm ht.    | Potted    | 1000mm o.c.   |
| <b>PERENNIALS &amp; ORNAMENTAL GRASSES</b> |     |                                    |                            |              |           |               |
| GB                                         | 33  | Hemerocallis 'Going Bananas'       | Going Bananas Daylily      | 100mm pot    | Potted    | 400mm o.c.    |
| KF                                         | 12  | Calamagrostis 'Karl Foerster'      | Feather Reed Grass         | 250mm pot    | Potted    | 800mm o.c.    |
| MF                                         | 13  | Hemerocallis 'Moses Fire'          | Moses Fire Daylily         | 100mm pot    | Potted    | 400mm o.c.    |
| RS                                         | 58  | Hemerocallis 'Ruby Stella'         | Ruby Stella Daylily        | 100mm pot    | Potted    | 400mm o.c.    |
| SD                                         | 25  | Hemerocallis 'Stella D'Oro'        | Stella D'Oro Daylily       | 100mm pot    | Potted    | 400mm o.c.    |



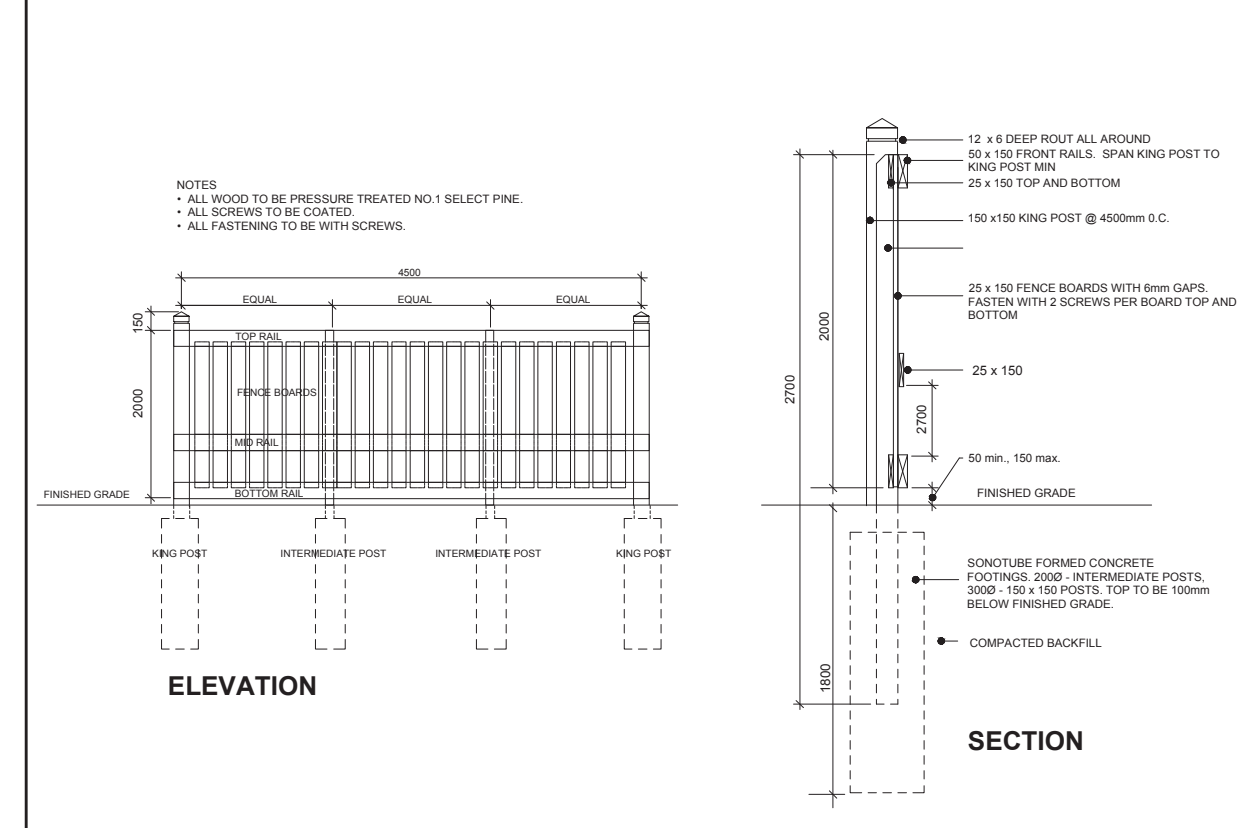
2 DECIDUOUS TREE PLANTING  
SCALE: NTS



3 SHRUB / ORNAMENTAL GRASS / PERENNIAL PLANTING  
SCALE: NTS



4 TREE PROTECTION FENCING  
SCALE: NTS



5 2.0m Ht. WOOD SCREEN FENCE  
SCALE: NTS

SURVEYOR'S REAL PROPERTY REPORT WITH TOPOGRAPHIC DETAILS  
PART 1 - PLAN SHOWING  
LOTS 79, 80, 81, 82, AND 83  
REGISTERED PLAN No. 320  
CITY OF OTTAWA  
J.D. BARNES LIMITED

CLIENT: **TCU**

CONSULTANTS: **project1 studio**  
Project 1 Studio Incorporated  
(514) 884-3939 | info@project1studio.ca

SURVEYORS: **J.D. BARNES LIMITED**  
LAND INFORMATION SPECIALISTS  
1000 SHEPPARD AVENUE EAST, SUITE 100  
SCARBOROUGH, ONTARIO M1S 1T2  
TEL: (416) 291-1100 | www.jdbarnes.com

CIVIL ENGINEERS: **McINTOSH PERRY**



LEGEND

- EXISTING TREE TO REMAIN
- EXISTING TREE TO BE REMOVED
- PROPOSED DECIDUOUS TREE
- PROPOSED SHRUBS / PERENNIALS
- PROPOSED RIVERSTONE
- PROPOSED SOD
- PROPOSED PRECAST CONCRETE PAVERS
- PROPOSED TREE PROTECTION FENCE
- PROPOSED 2.0m Ht. WOOD SCREEN FENCE

|   |                              |            |    |    |
|---|------------------------------|------------|----|----|
| 3 | PLAN AND FILE NUMBER ADDED   | 12/01/2023 | ML | JL |
| 2 | REVISED PER NEW SITE PLAN    | 10/10/2023 | ML | JL |
| 1 | ISSUED FOR SITE PLAN CONTROL | 07/26/2023 | ML | JL |

**JAMES B. LENOX & ASSOCIATES INC.**  
LANDSCAPE ARCHITECTS  
3332 CARLING AVE. OTTAWA, ONTARIO K2H 5A8  
Tel. (613) 722-5168 Fax. (1866) 343-3942

PROJECT  
PROPOSED MIXED USE MID RISE APARTMENT BUILDING  
300 TREMBLAY ROAD, OTTAWA ON

DRAWING  
TREE CONSERVATION REPORT & LANDSCAPE PLAN

STAMP

SCALE: AS SHOWN  
START DATE: JULY 2023  
PROJECT NO.: 20MIS2060

PROJECT NORTH

DRAWING NO.: **L.1**  
PLOT SIZE ARCH-D