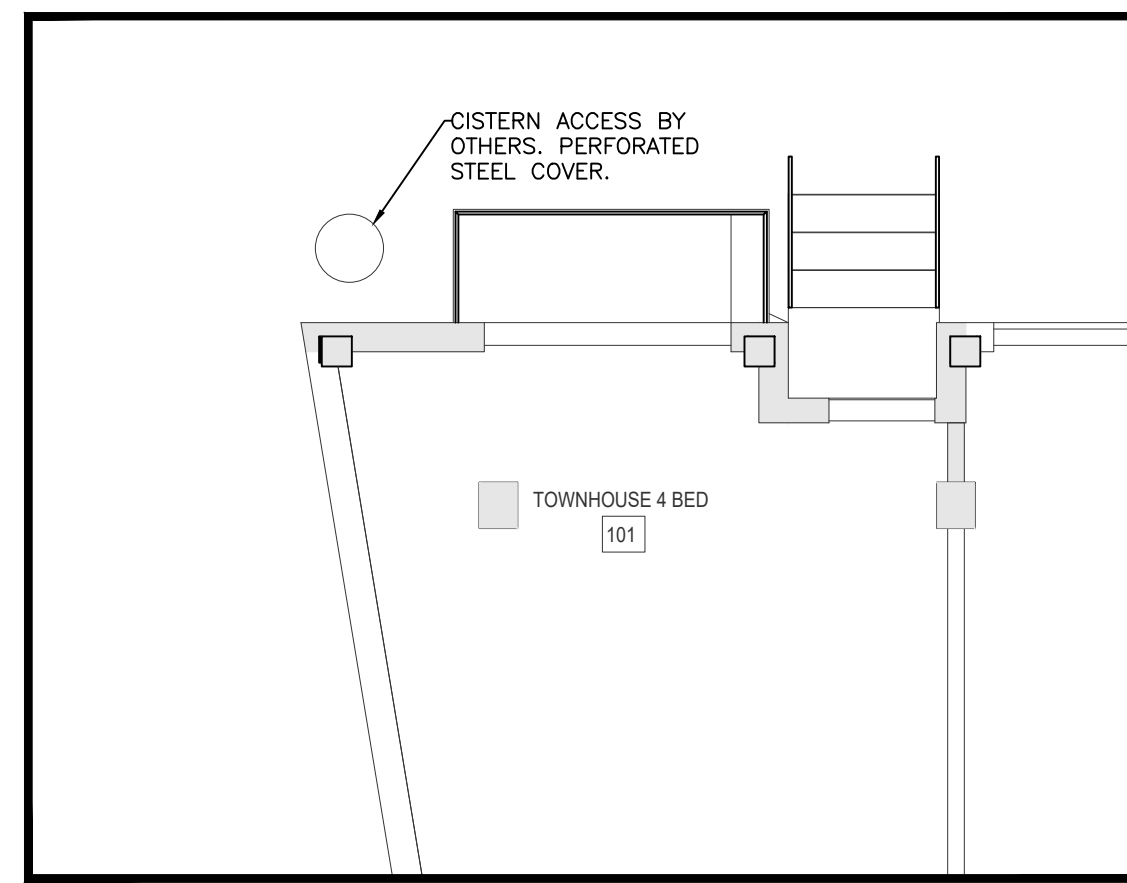
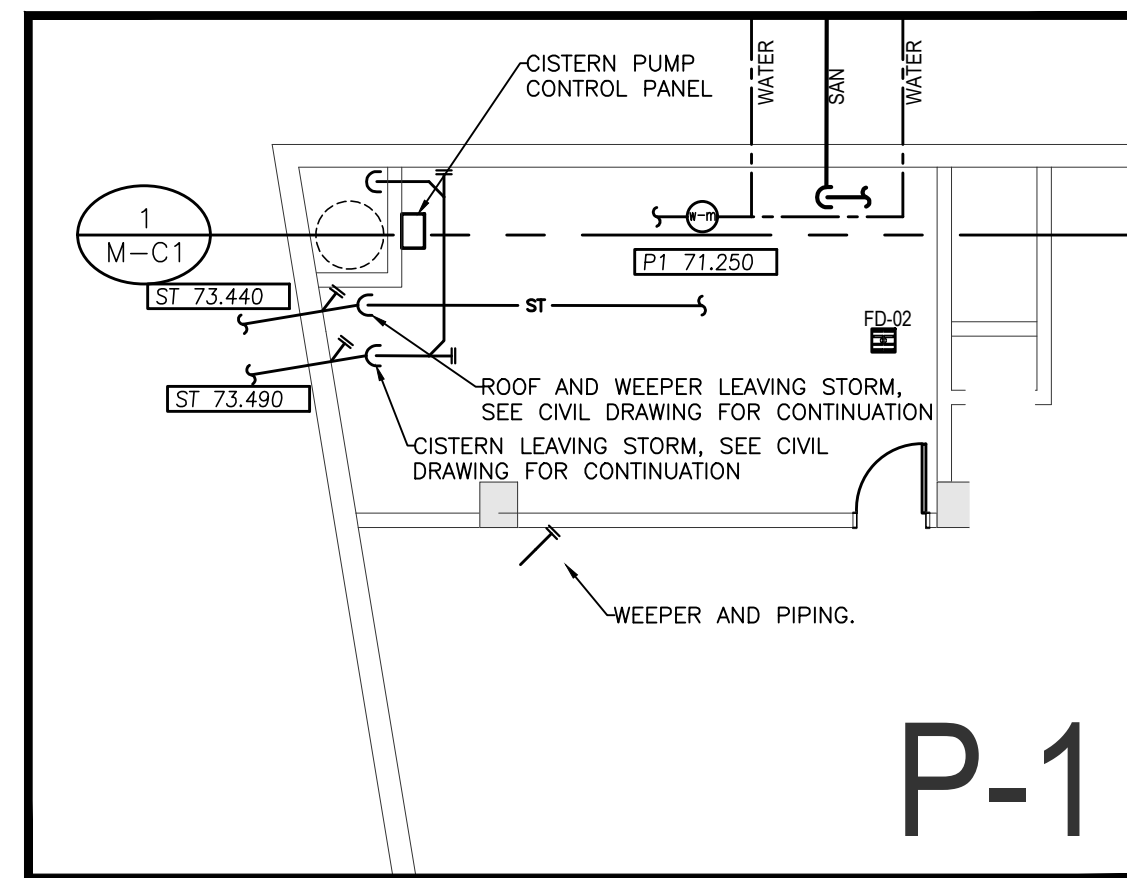


  
**JOHN SEVIGNY C.E.T.**  
**MANAGER (A), DEVELOPMENT REVIEW EAST**  
**PLANNING, DEVELOPMENT & BUILDING SERVICES**  
**DEPARTMENT, CITY OF OTTAWA**

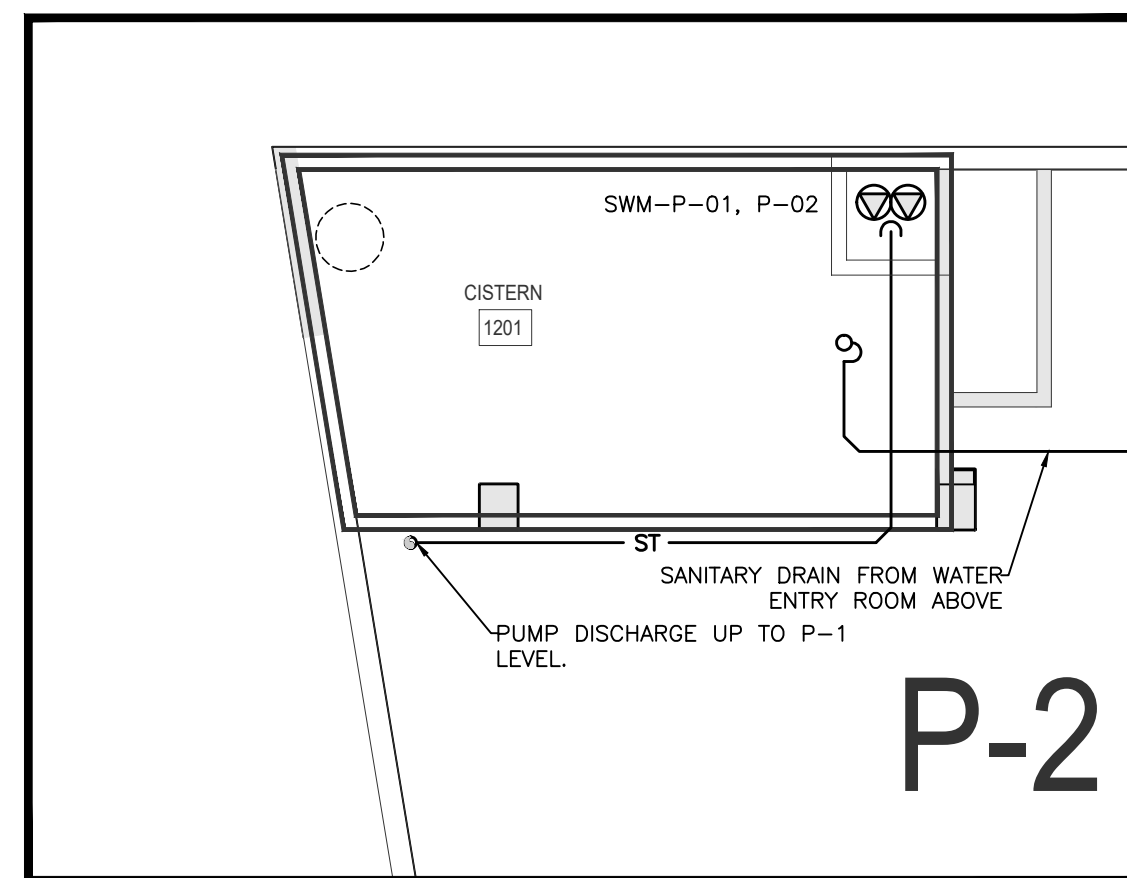
**APPROVED**  
 By sevignyjo at 11:25 am, Dec 09, 2024



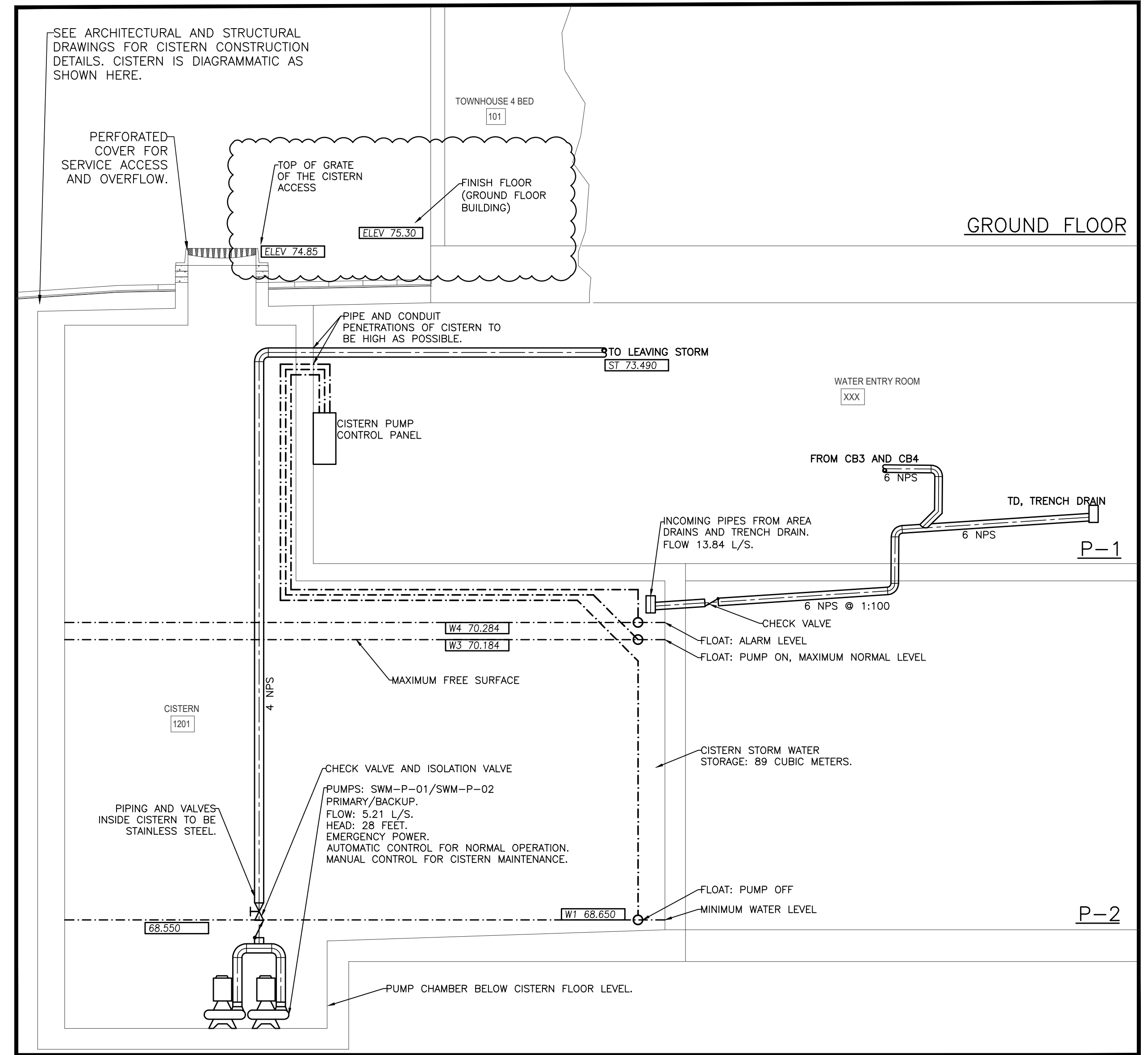
2  
M-C1  
GROUND FLOOR DETAIL



3  
M-C1  
P-1 FLOOR DETAIL



4  
M-C1  
P-2 FLOOR DETAIL



1  
M-C1  
NTS  
CISTERN DETAIL

**CISTERN NOTES**

1. SEE CIVIL ENGINEER'S SERVICES STORMWATER MANAGEMENT REPORT FOR ADDITIONAL SUPPORTING INFORMATION FOR THE SYSTEM. THAT REPORT SHALL FORM PART OF THE SUPPORTING DOCUMENTS FOR THIS CONTRACT. CONTRACTOR SHALL READ THE REPORT PRIOR TO SUBMITTING CONTRACT PRICE.
2. CISTERN VOLUME TO BE 89 CUBIC METERS.
3. CISTERN PUMP RELEASE RATE TO BE 5.21 L/S.
4. THIS CONTRACTOR TO PROVIDE PIPING, CONTROLS, CONDUIT, WIRING AND EQUIPMENT FOR THE CISTERN. CISTERN DETAIL DESIGN BY OTHERS AND TO BE PROVIDED BY GENERAL CONTRACTOR.
5. ALL PIPING SHALL BE PRESSURE PIPING INCLUDING STORM UP 1 METER ABOVE TO THE INLET OF THE OVERFLOW/ACCESS.
6. ALL PENETRATIONS OF THE CISTERN SHALL BE MADE PRESSURE AND WATER TIGHT.
7. THIS CONTRACTOR TO MEASURE AREA OF CISTERN AFTER IT IS FORMED AND DETERMINE HEIGHTS OF ALL WATER LEVELS, FLOAT LEVELS AND PIPE PENETRATIONS. SUBMIT FABRICATION SKETCH TO ENGINEER FOR REVIEW PRIOR TO STARTING WORK. ALL PIPE AND CONTROLS OPENINGS TO BE CORED IN THE CISTERN AFTER IT IS FORMED.
8. INCOMING STORM PIPING AND ANY SANITARY PIPING FROM FLOOR ABOVE, PASSING THROUGH THE CISTERN, TO ENTER THE CISTERN ABOVE THE HIGH WATER LEVEL.
9. WATER LEVELS OR FLOAT LEVELS ARE INDICATED BY "W" TAGS.
10. FLOOR ELEVATIONS ARE NOMINAL AND ARE TO BE CONFIRMED ON SITE. RELATIVE ELEVATIONS TO BE ADHERED TO.

THIS DRAWING, OR PARTS THEREOF, MAY NOT BE REPRODUCED OR USED IN ANY FORM, BY ANY METHOD, FOR ANY PURPOSE, WITHOUT THE WRITTEN PERMISSION OF QM&E ENGINEERING INC.

THIS DRAWING IS TO BE READ IN CONJUNCTION WITH THE SPECIFICATION. WHERE CONFLICT ARISES THE MORE STRINGENT OF THE TWO SHALL APPLY.

COPYRIGHT © 2024 QM&E ENGINEERING INC.

THE CONTRACT DOCUMENTS ARE THE PROPERTY OF QM&E ENGINEERING INC. (QM&E)

THE CONTRACTOR SHALL OBTAIN A FULL SET OF ALL CONSULTANTS DESIGN DOCUMENTS PRIOR TO STARTING WORK.

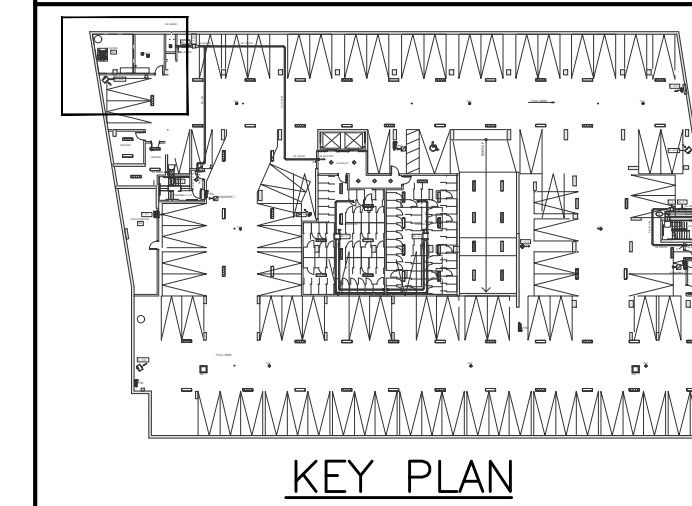
QM&E BEARS NO RESPONSIBILITY FOR INTERPRETATIONS OF THESE DOCUMENTS BY OTHERS.

UPON WRITTEN APPLICATION QM&E WILL PROVIDE WRITTEN CLARIFICATION REGARDING THE INTENT OF THE CONTRACT DOCUMENTS.

QM&E REVIEW OF SHOP DRAWINGS SUBMITTED BY THE CONTRACTOR IS FOR DESIGN CONFORMANCE ONLY.

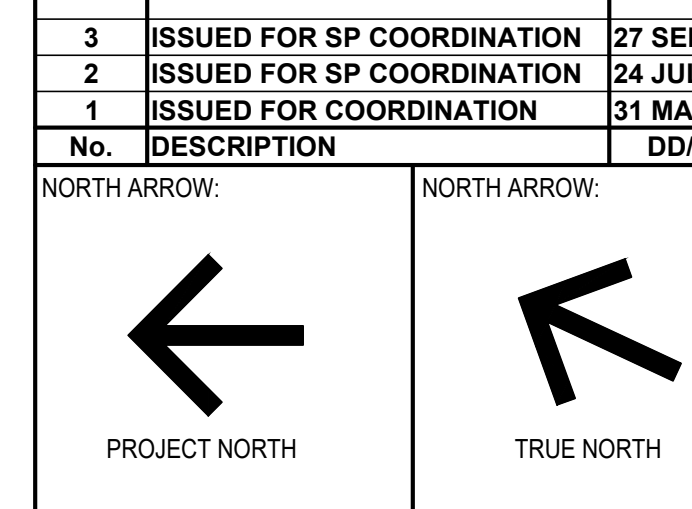
DRAWINGS ARE NOT TO BE SCALED FOR CONSTRUCTION. CONTRACTOR TO VERIFY ALL CONDITIONS AND DIMENSIONS, ON SITE, REQUIRED TO PERFORM THE WORK AND REPORT ANY DISCREPANCIES WITH THE CONTRACT DOCUMENTS TO THE DESIGN TEAM BEFORE COMMENCING WORK.

**23-058**



KEY PLAN

No.	DESCRIPTION	DD/MM/YY
3	ISSUED FOR SP COORDINATION	27 SEP 2024
2	ISSUED FOR SP COORDINATION	24 JUL 2024
1	ISSUED FOR COORDINATION	31 MAY 2024



CLIENT:



ARCHITECT:



88 Saint-Joseph Boulevard, Gatineau QC J8Y 3W5  
Tel.: 819-800-1355

**BEARBROOK**  
**APARTMENT BUILDING**  
 98-100 BEARBROOK RD



9 GURDWARA ROAD, UNIT 200, ONTARIO, K2E 7X6  
 TEL.: (613) 366-4763  
 e-mail: mail@qmeengineering.com

REVISION:	SCALE:
SCALE: 1:100	SCALE: 1:100
DRAWN: CWC	DRAWN: CWC
DESIGNED: CWC	DESIGNED: CWC
CHECKED: LVL	CHECKED: LVL
PROJECT: 23-058	PROJECT: 23-058

**M-C1**  
**CISTERN DETAILS**