

LEGEND

DC	PROPOSED BARRIER CURB	MAXIMUM 3:1 SIDESLOPE
---	PROPOSED DEPRESSED CURB	FINISHED FLOOR ELEVATION
---	DRAINAGE AREA LIMITS	UNDERSIDE OF FOOTING ELEVATION
---	APPROXIMATE PONDING LIMITS	EXISTING STORM MAIN & SEWER
A-2 0.129 0.62	POST-DEVELOPMENT AREA ID	EXISTING CATCHBASIN
---	POST-DEVELOPMENT DRAINAGE AREA (HA)	EXISTING CATCATCHBASIN LEAD
---	1.5 YEAR WEIGHTED RUNOFF COEFFICIENT	EXISTING CONCRETE CURB
STM#1120	PROPOSED STORM MANHOLE & SEWER (WT-WATERTIGHT COVER)	EXISTING VALVE & HUBLE BOX
STM#1128	PROPOSED STORM MANHOLE & SEWER (WT-WATERTIGHT COVER)	EXISTING SERVICE PASS
CBM#	PROPOSED STORM MANHOLE	EXISTING HYDRANT
CB	PROPOSED CATCHBASIN	EXISTING GAS CATCHBASIN
---	PROPOSED STORM SEWER AND FLOW DIRECTION	EXISTING CATCHBASIN MANHOLE
ICD	PROPOSED INLET CONTROL DEVICE	EXISTING UTILITY POLE
---	EMERGENCY OVERLAND FLOW ROUTE	EXISTING GUY WIRE

- GENERAL NOTES:**
- COORDINATE AND SCHEDULE ALL WORK WITH OTHER TRADES AND CONTRACTORS.
 - DETERMINE THE EXACT LOCATION, SIZE, MATERIAL AND ELEVATION OF ALL EXISTING UTILITIES PRIOR TO COMMENCING CONSTRUCTION. PROTECT AND ASSUME RESPONSIBILITY FOR ALL EXISTING UTILITIES WHETHER OR NOT SHOWN ON THIS DRAWING.
 - OBTAIN ALL NECESSARY PERMITS AND APPROVALS FROM THE CITY OF OTTAWA BEFORE COMMENCING CONSTRUCTION.
 - BEFORE ANY CONSTRUCTION WORK BEGINS PROVIDE PROOF OF COMPREHENSIVE ALL RISK AND OPERATIONAL LIABILITY INSURANCE FOR \$5,000,000.00. INSURANCE POLICY TO NAME OWNERS, ENGINEERS AND ARCHITECTS AS CO-INSURED.
 - COMPLETE ALL WORKS IN ACCORDANCE WITH THE MOST CURRENT CITY OF OTTAWA STANDARDS AND SPECIFICATIONS USING THE CURRENT GUIDELINES BY LAWS AND STANDARDS INCLUDING MATERIALS OF CONSTRUCTION, DIMENSION AND ALL RELEVANT REFERENCES TO OPCS, OPCS & WWW GUIDELINES, ALL CURRENT VERSIONS AND AS AMENDED.
 - RESTORE ALL DISTURBED AREAS ON-SITE AND OFF-SITE, INCLUDING TRENCHES AND SURFACES ON PUBLIC ROAD ALLOWANCES TO EXISTING CONDITIONS OR BETTER TO THE SATISFACTION OF THE CITY OF OTTAWA AND ENGINEER.
 - REMOVE FROM SITE ALL EXCESS EXCAVATED MATERIAL, ORGANIC MATERIAL AND DEBRIS UNLESS OTHERWISE INSTRUCTED BY ENGINEER. EXCAVATE AND REMOVE FROM SITE ANY CONTAMINATED MATERIAL. ALL CONTAMINATED MATERIAL SHALL BE DISPOSED OF AT A LICENSED LANDFILL FACILITY.
 - ALL ELEVATIONS ARE GEODETIC.
 - REFER TO THE GEOTECHNICAL INVESTIGATION AND HYDROGEOLOGICAL ASSESSMENT - 600 MARCH ROAD - (REPORT NO. 1206873-RPT-1), PREPARED BY GHD ON JUNE 16, 2023. FOR SUBSURFACE CONDITIONS, CONSTRUCTION RECOMMENDATIONS AND GEOTECHNICAL INSPECTION REQUIREMENTS. THE GEOTECHNICAL CONSULTANT IS TO REVIEW ON-SITE CONDITIONS AFTER EXCAVATION PRIOR TO PLACEMENT OF THE GRANULAR MATERIAL.
 - REFER TO ARCHITECTS AND LANDSCAPE ARCHITECTS DRAWINGS FOR BUILDING AND HARDSURFACE AREAS AND DIMENSIONS.
 - REFER TO THE STORMWATER MANAGEMENT REPORT (R-2023-143) PREPARED BY NOVATECH.
 - SAW CUT AND KEY GRIND ASPHALT AT ALL ROAD CUTS AND ASPHALT TIE IN POINTS AS PER CITY OF OTTAWA STANDARDS (R10).

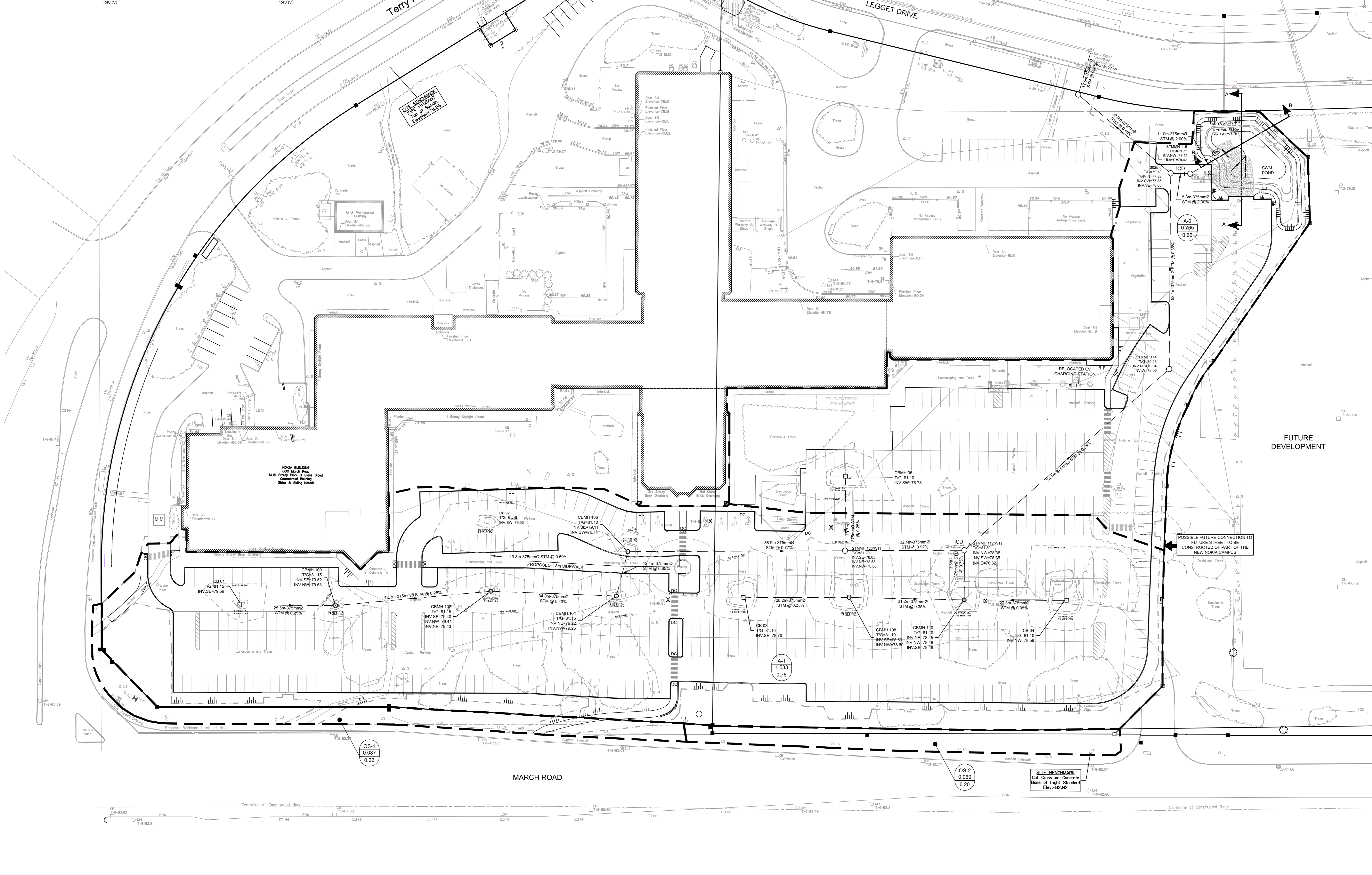
- BENCHMARK NOTES:**
- ELEVATIONS SHOWN ARE GEODETIC AND ARE REFERRED TO THE CGVD25 GEODETIC DATUM.
 - IT IS THE RESPONSIBILITY OF THE USER OF THIS INFORMATION TO VERIFY THAT THE JOB BENCHMARK HAS NOT BEEN ALTERED OR DISTURBED AND THAT ITS RELATIVE ELEVATION AND DESCRIPTION AGREES WITH THE INFORMATION SHOWN ON THIS DRAWING.
 - BENCHMARK WAS PROVIDED ON SURVEYOR'S REAL PROPERTY REPORT PART 1, PLAN OF PART OF LOT 5, CONCESSION 2 (OTTAWA FRONT) GEOGRAPHIC TOWNSHIP OF GLOUCESTER, CITY OF OTTAWA, SURVEYED BY ANNIS, OSULLIVAN AND VOLLEBECK LTD.

INLET CONTROL DEVICE DATA TABLE: AREA A-1 (INCL. AREAS OS-1 & OS-2)

DESIGN EVENT	ICD TYPE (PLUG TYPE)	OUTLET STRUCTURE	SWAMPERS OF OUTLET PIPE (MM)	PEAK DESIGN FLOW (L/S)	DESIGN HEAD (M)	DESIGN ELEVATION (M)	WATER VOLUME (M ³)	AVAILABLE STORAGE
1:2 YR	18mm RA	STM#1112	375mm PVC	8.2	2.68	81.17	152.4	1088.0m ³
1:5 YR	18mm RA	STM#1112	375mm PVC	10.5	2.81	81.32	167.7	1088.0m ³
1:100 YR	18mm RA	STM#1112	375mm PVC	10.5	2.81	81.32	167.7	1088.0m ³

INLET CONTROL DEVICE DATA TABLE: AREA A2 (POND)

DESIGN EVENT	ICD TYPE (PLUG TYPE)	OUTLET STRUCTURE	SWAMPERS OF OUTLET PIPE (MM)	PEAK DESIGN FLOW (L/S)	DESIGN HEAD (M)	DESIGN ELEVATION (M)	WATER VOLUME (M ³)	AVAILABLE STORAGE
1:2 YR	18mm RA	STM#1116	375mm PVC	3.4	0.86	79.28	27.1	485.3m ³
1:5 YR	18mm RA	STM#1116	375mm PVC	4.3	0.92	79.36	34.1	485.3m ³
1:100 YR	18mm RA	STM#1116	375mm PVC	4.3	0.92	79.36	34.1	485.3m ³



NOTE:
THE POSITION OF ALL POLE LINES, CONDUITS, WATERMANS, SEWERS AND OTHER UNDERGROUND AND OVERGROUND UTILITIES AND STRUCTURES IS NOT NECESSARILY SHOWN ON THE CONTRACT DRAWINGS, AND WHERE SHOWN, THE ACCURACY OF THE POSITION OF SUCH UTILITIES AND STRUCTURES IS NOT GUARANTEED. BEFORE STARTING WORK, DETERMINE THE EXACT LOCATION OF ALL SUCH UTILITIES AND STRUCTURES AND ASSUME ALL LIABILITY FOR DAMAGE TO THEM.

OWNER INFORMATION
NOKIA OJ COLLIERS
181 BAY STREET, SUITE 1400
TORONTO, ONTARIO, M5J 2V1
ERIK CUNNINGTON
PHONE: (416) 920-0155
EMAIL: erik.cunnington@colliers.com

SURVEYOR
ANNIS, OSULLIVAN, VOLLEBECK LTD.
14 CONCOURSE GATE, SUITE 400
OTTAWA, ONTARIO, K2E 7S6
PHONE: (613) 727-0850

CIVIL ENGINEER/LANDSCAPE ARCHITECT
NOVATECH ENGINEERS, PLANNERS & LANDSCAPE ARCHITECTS
240 MICHAEL COWPLAND DRIVE, SUITE 200
OTTAWA, ONTARIO, K2M 1P6
PHONE: (613) 254-9643

NO.	REVISION	DATE	BY
3.	REVISED AS PER CITY COMMENTS	FEB 14/24	FST
2.	ISSUED FOR SPC APPROVAL	NOV 7/23	FST
1.	PRELIMINARY PLANS ISSUED TO CITY	OCT 2/23	FST

SCALE	1:400			
0	4	8	12	16

FOR REVIEW ONLY

NOVATECH
Engineers, Planners & Landscape Architects
Suite 200, 340 Michael Cowpland Drive
Ottawa, Ontario, Canada K2M 1P6
Telephone: (613) 254-9643
Facsimile: (613) 254-9887
Website: www.novatech-eng.com

LOCATION
CITY OF OTTAWA
600 MARCH ROAD - NOKIA PARKING LOT EXPANSION

DRAWING NAME
POST-DEVELOPMENT
STORMWATER MANAGEMENT
PLAN

PROJECT NO. 121334
REV. 121334-SWM
DRAWING NO. 121334-SWM
PLAN # 1907