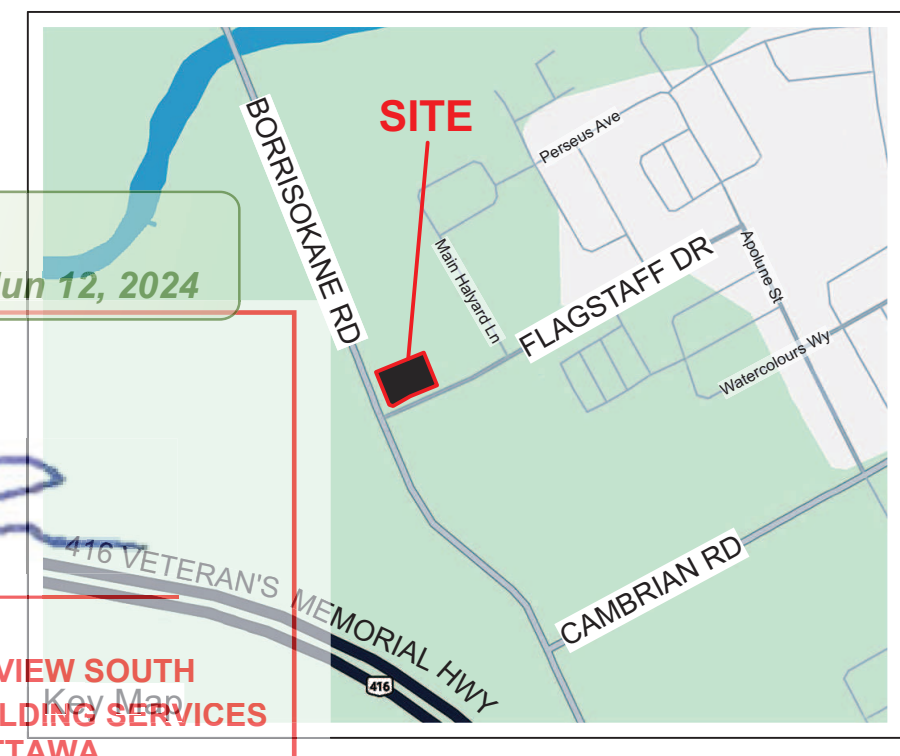


BLOCK 66, PLAN 4M1705  
SUBJECT TO AN  
EASEMENT AS IN  
OC2553461 CITY OF  
OTTAWA

**APPROVED**  
By Lily Xu at 3:30 pm, Jun 12, 2024

LILY XU, MCIP, RPP  
MANAGER, DEVELOPMENT REVIEW SOUTH  
PLANNING, DEVELOPMENT, AND BUILDING SERVICES  
DEPARTMENT, CITY OF OTTAWA



**GENERAL NOTES**

- All general site information and conditions compiled from existing plans, surveys and consultant's field notes. Report all discrepancies prior to any work. No responsibility is born by the Consultant for unknown subsurface conditions.
- The location of the utilities is approximate only, and the exact location should be determined by consulting the municipal authorities and utility companies concerned. The Contractor shall prove the location of utilities and shall be responsible for adequate protection from damage.
- All dimensions shown are to be verified on site prior to any construction. No deviations are to be made from the layouts as shown on this plan without prior consultation with the Landscape Architect and Owner.
- Obtain approval of Landscape Architect for granular base and layout of all pavement areas prior to construction.
- Stake planting locations and receive approval of Landscape Architect, prior to excavation of any planting pits. No substitutions of plant material shall be made without prior approval of the Landscape Architect.
- Where clay is encountered proper drainage must be ensured in tree/shrub pits, prior to planting. Have method approved by Landscape Architect.
- Maintain positive surface runoff through the entire construction period.
- Reinstate all areas and items damaged as a result of construction activities.

geoOttawa 2021

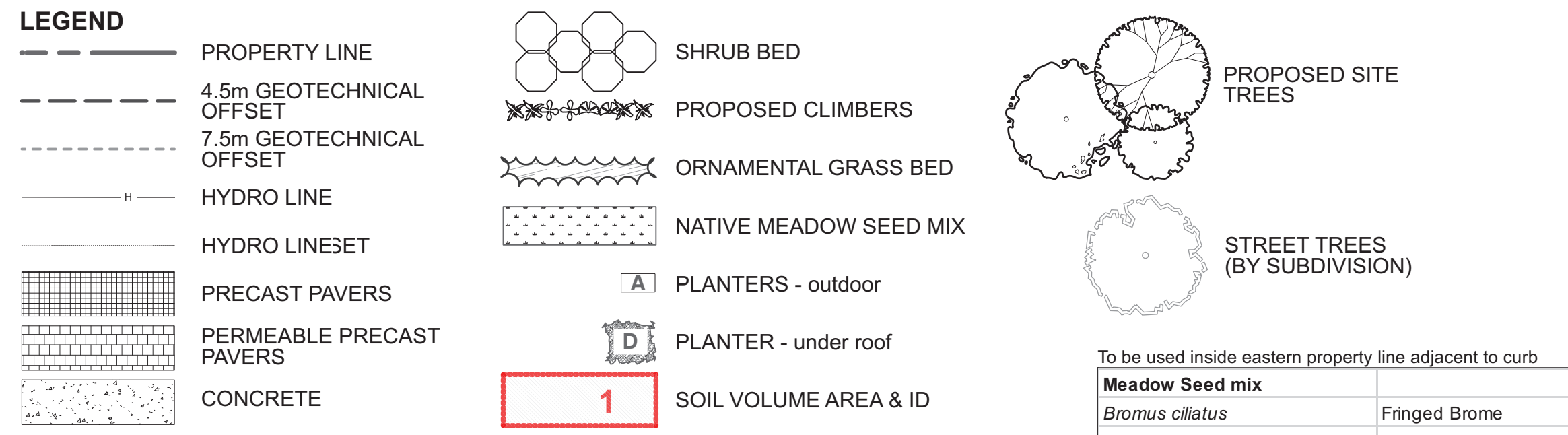
**NOTE**  
THIS PLAN IS ISSUED FOR SITE PLAN CONTROL SUBMISSION ONLY.  
ADDITIONAL DETAILING AND SPECIFICATIONS ARE REQUIRED  
PRIOR TO TENDERING OR CONSTRUCTION.



**NOTE**

THE SITE HAS BEEN CLEARED OF VEGETATION.  
NO TREES OVER 10cm DBH EXIST ON THE SITE.

**EXISTING SITE CONDITIONS**

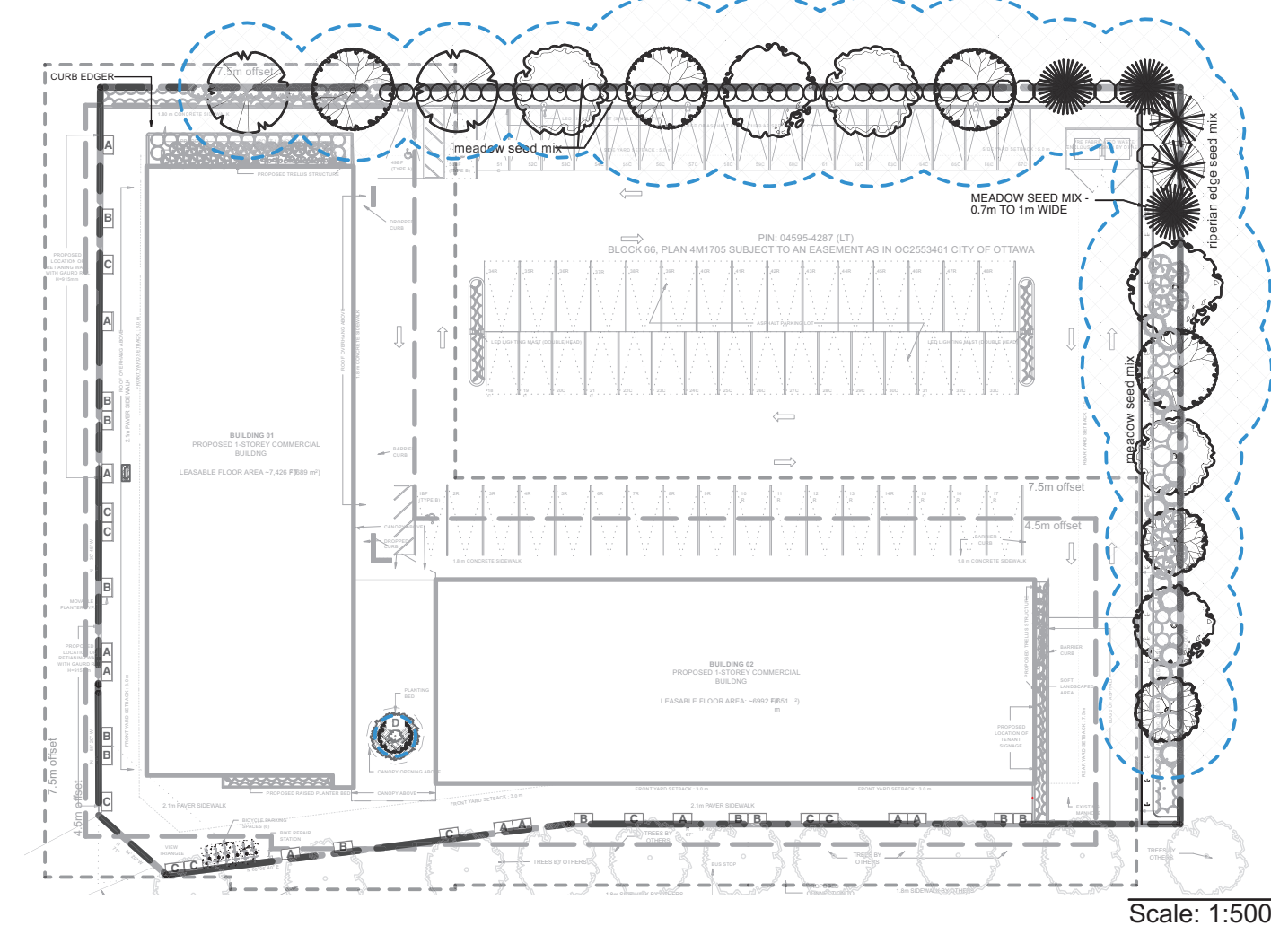


Soil Volume Area, Tree Quantity and Size	Tree Quantity	OTTAWA Target Soil Volume (m <sup>3</sup> )	Design Soil Volume	Soil Adequacy percentage
<b>AREA 1 - 4 large trees, 4 medium trees, 1 conifer</b> plant bed (160 sq m x 0.9 metre deep)	9	147.0	144.0	97.96%
<b>AREA 2 - 2 large trees, 4 medium trees, 4 conifers</b> plant bed (245 sq m x 0.7 metre deep)	10	156.0	171.5	109.94%
<b>AREA 3 - 1 small ornamental tree (15cm DBH)*</b> plant bed (7 sq m x 0.9 metre deep)	1	7.0	6.3	90.00%

\* Small ornamental trees with growth to 8-15cm DBH, large shrubs, and columnar conifers calculated using 'How much soil to grow a big tree' by DeepRoot as a guide

ID	Qty	Botanical Name	Common Name	Sched. Size	Remarks	Origin
<b>TREES</b>						
Ar	3	Acer rubrum	Red Maple	70mm caliper	WB, Staked	Ntv
Ag	2	Aesculus glabra	Ohio Buckeye	50mm caliper	WB, Staked	Ntv
Bp	2	Betula papyrifera	Paper Birch, Canoe Birch	60mm caliper	WB, Staked	Ntv
Co	4	Celtis occidentalis	Common Hackberry	60mm caliper	WB, Staked	Ntv
Pg	2	Picea glauca	White Spruce	200cm ht	WB, Staked	Ntv
Pst	2	Pinus strobus	Eastern White Pine	200cm ht	WB, Staked	Ntv
Qr	3	Quercus rubra	Northern Red Oak	70mm caliper	WB, Staked	Ntv
Tc	1	Tsuga canadensis	Canadian Hemlock	200cm ht	WB, Staked	Ntv
<b>SHRUBS</b>						
Am	9	Aronia melanocarpa	Black Chokeberry	50cm ht.	Bare root	Ntv
CoBB	14	Cephalanthus occidentalis	Buttonbush	50cm ht.	Potted	Ntv
Cr	9	Cornus racemosa	Gray Dogwood	50cm ht	Potted	Ntv
DI	14	Diervilla lonicera	Dwarf Bush-honeysuckle	2 gallon pot	Potted	Ntv
Pf	17	Potentilla fruticosa	Bush Cinquefoil	2 gallon pot	Potted	Ntv
Ra	36	Rhus aromatica	Fragrant Sumac	50cm ht.	Potted	Ntv
Sa	27	Symphoricarpos albus	Snowberry	50cm ht.	Potted	Ntv
To(NC)	11	Thuja occidentalis (Nursery grown, Clumps)	White Cedar, Eastern Arborvitae	200cm ht	B&B	Ntv H
<b>CLIMBERS</b>						
Ld	6	Lonicera dioica	Glaucous Honeysuckle	3 year	Potted	Ntv
Cvir	8	Clematis virginiana	Virgin's Bower Clematis	3 year	Potted	Ntv
Cleo	6	Clematis occidentalis	Blue Virgin's Bower	3 year	Potted	Ntv
<b>PERENNIALS</b>						
PvA	61	Ornamental Grasses - Mixed	Karl Foerster Featherreed Grass, Switch Grass, Big Bluestem	3 year	Potted	Mix
PvB	42	Ornamental Grasses - Native	Hall's Fescue, Bottlebrush Grass, Canada Wild Rye, Little Bluestem	3 year	Potted	Ntv
<b>Planters</b>						
PpA	11	Planter type A	Per planter: 2 Rodgersia, 14 (Wild Strawberry, Pink Coreopsis, Candytuft			Mix
PpB	13	Planter type B	Per planter: 2 Little Bluestem Grass, 17 (trailing sedum varieties, Wild Strawberry, Pink Coreopsis)			Mix
PpC	10	Planter type C	Per planter: 2 Prairie Dropseed Grass, 17 (Trailing sedum varieties, Wild Strawberry, trailing Phlox)			Mix
			18 Hostia spp. 50 (Phlox			

TREE CANOPY COVERAGE	
TOTAL CANOPY AREA	1319 m <sup>2</sup>
TOTAL SITE AREA	4390 m <sup>2</sup>
PERCENT COVERAGE	30%



landscape architecture • urban design • site planning

Ph 613-224-4744 Fx 613-224-2331 info@ral.ca www.ral.ca

6		
5		
4		
3	Re-Issued for SPC	2024/02/22
2	Re-Issued for SPC	2023/12/14
1	Issued for SPC	2023/08/22

DESIGNED BY / CONGR PAR M. Ruhland  
DRAWN BY / DESINE PAR T.Frost / V. Odusanya  
CHECKED BY / VERIFIE PAR M. Ruhland  
SCALE / ECHELLE 1:200

ARCHITECT CONSULTANT

PROJECT / LOCATION

**THE NUKK**

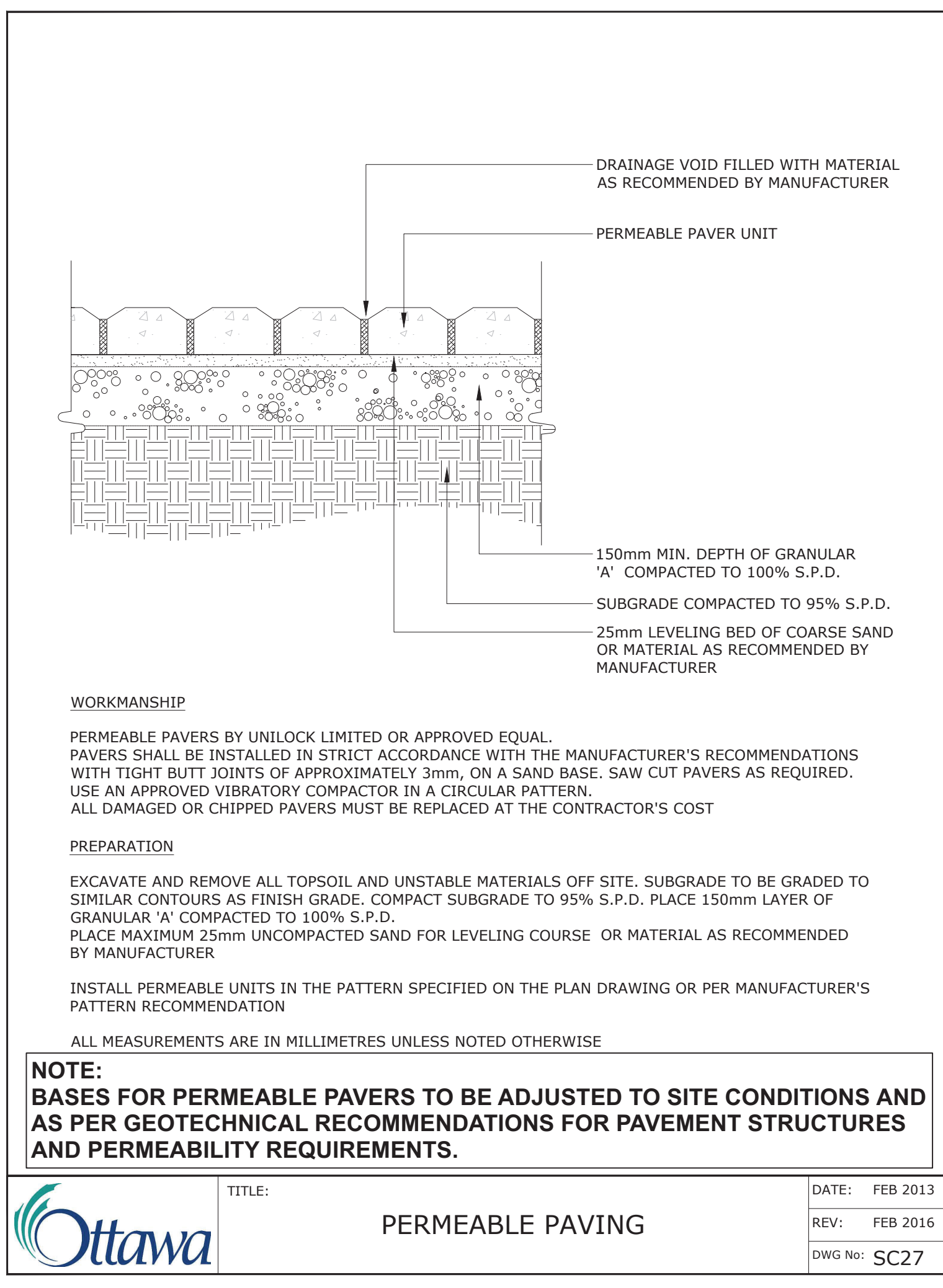
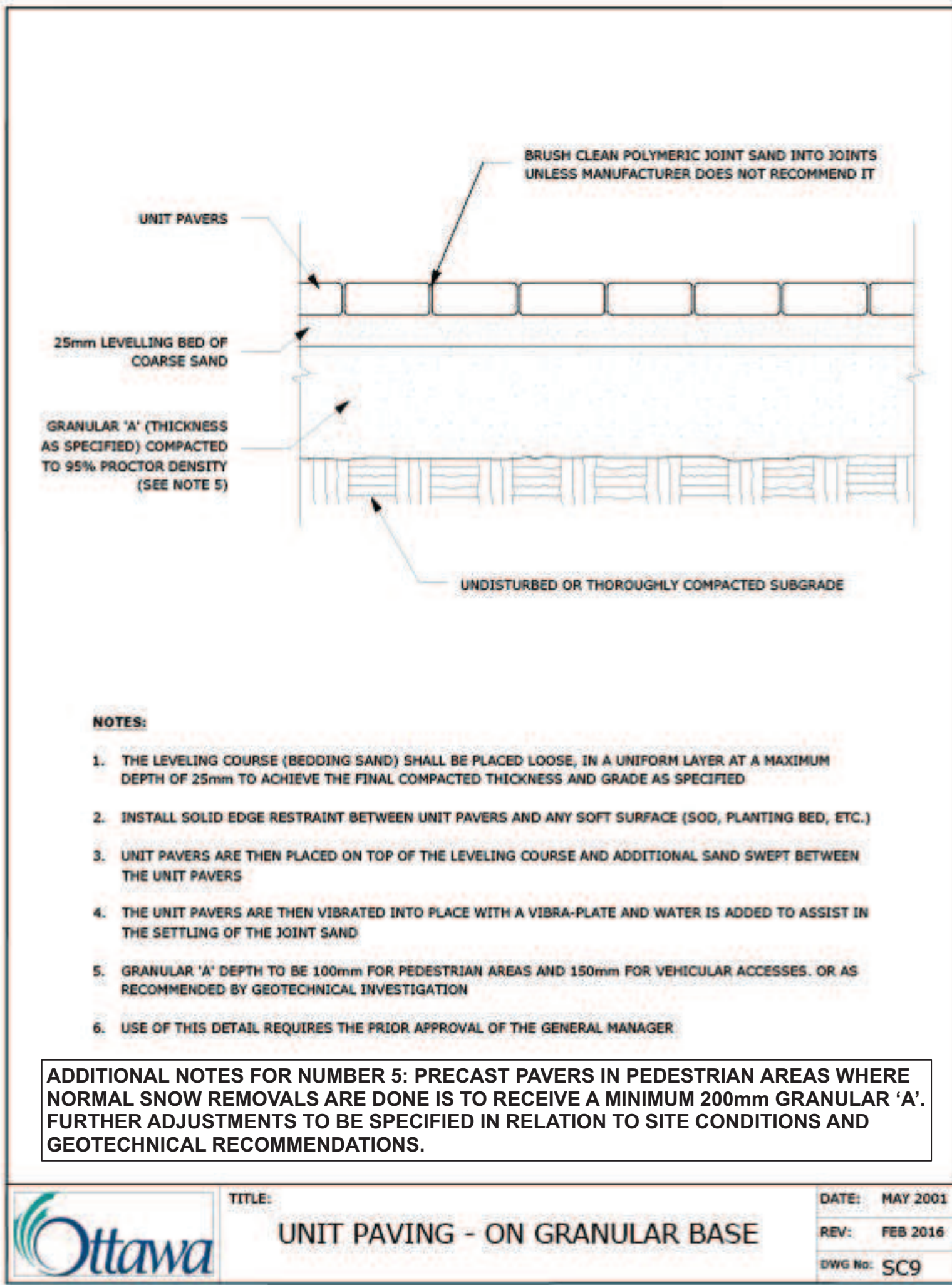
652 FLAGSTAFF DRIVE, OTTAWA ON.

DRAWING

**LANDSCAPE PLAN**

SHEET NO. PROJECT NO. 23-1719

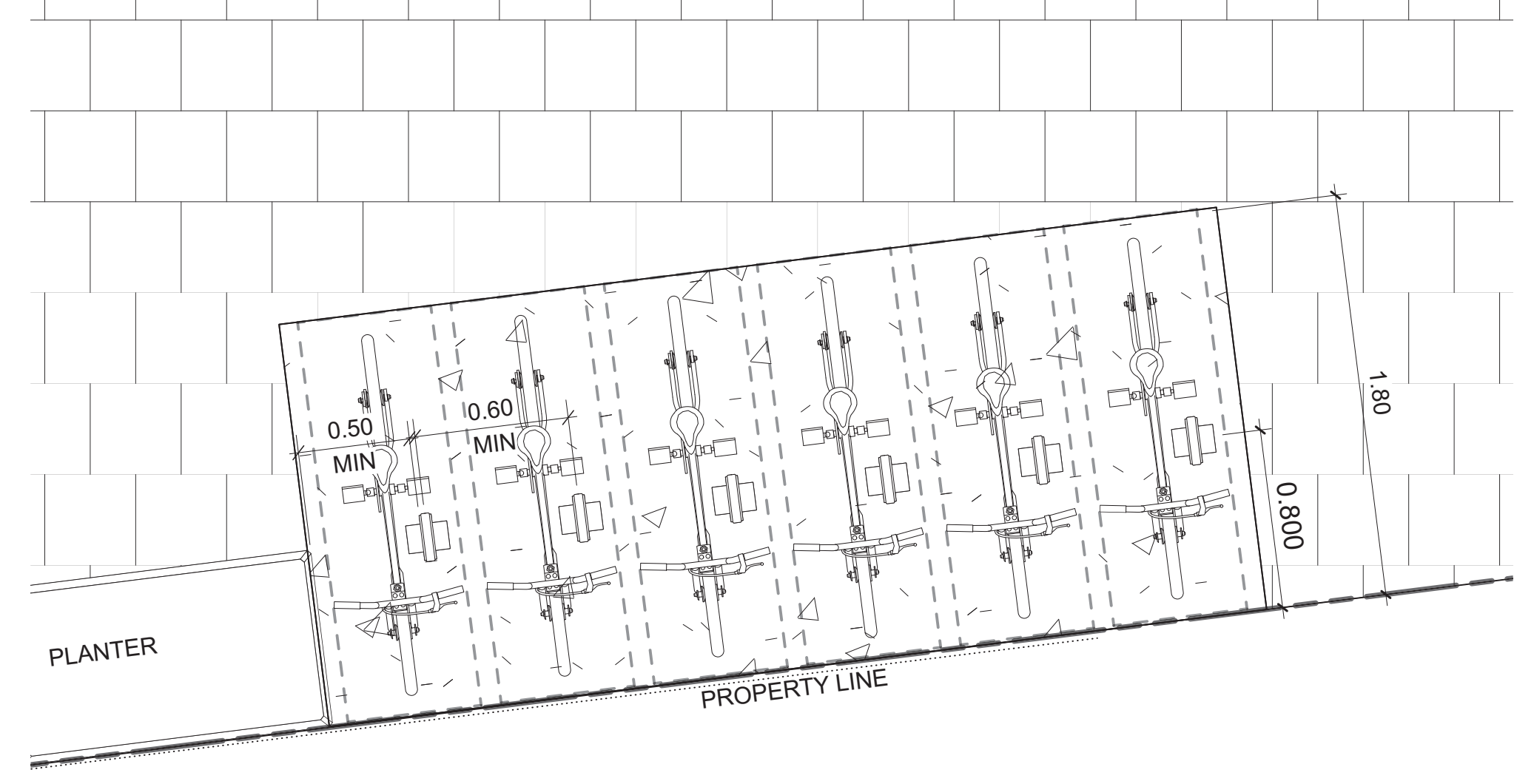
**L-01**



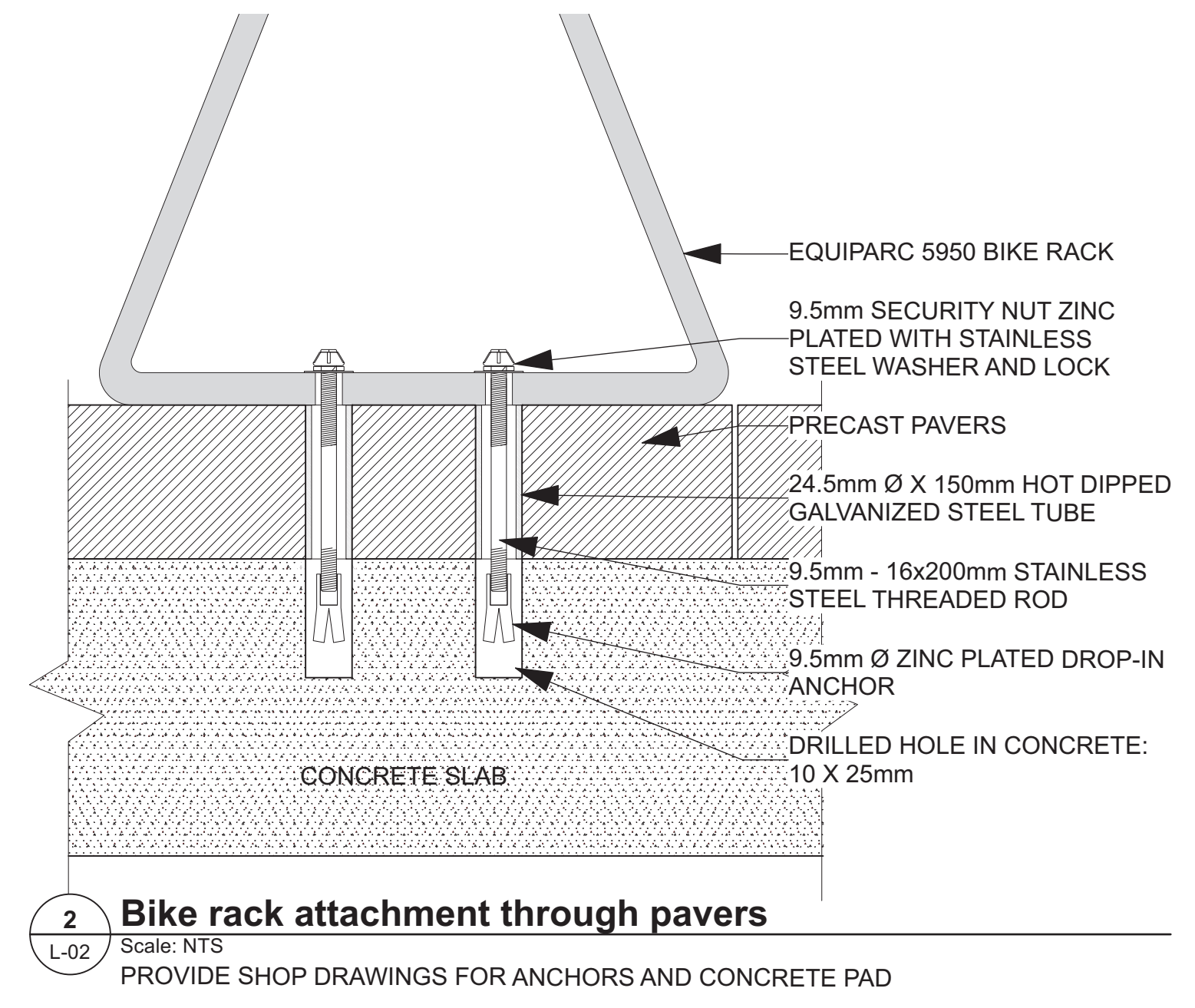
**APPROVED**  
 By Lily Xu at 3:30 pm, Jun 12, 2024

*Lily Xu*  
**LILY XU, MCIP, RPP**  
 MANAGER, DEVELOPMENT REVIEW SOUTH  
 PLANNING, DEVELOPMENT, AND BUILDING SERVICES  
 DEPARTMENT, CITY OF OTTAWA

**NOTE**  
 THIS PLAN IS ISSUED FOR SITE PLAN CONTROL SUBMISSION ONLY.  
 ADDITIONAL DETAILING AND SPECIFICATIONS ARE REQUIRED  
 PRIOR TO TENDERING OR CONSTRUCTION.



**1 Bike Rack layout**  
 Scale: 1:25



**Equiparc**

EQUIPARC  
 1001 JAMES-BRODIE  
 ST-JEAN-SUR-RICHELIEU, QC J2X 0C1  
 TOLL FREE: 1-800-363-9264  
 PHONE: (450) 346-1882  
 FAX: (866) 346-2538  
 www.equiparc.com

**3 Bike Rack EP 5950**  
 Scale: NTS

**SPECIFICATIONS:**  
 FRAME MADE OF HOT DIPPED GALVANIZED STEEL, PAINTED HOT DIPPED GALVANIZED EXPANDED METAL LINER.  
 36 IMP GAL / 43 US GAL  
 COVERING AVAILABLE IN WOOD ONLY  
 COVERINGS: WOOD, JATOPA, IPE AND WHITE OAK  
 WEIGHT: 240 LB

**NOTES:**  
 1. INSTALLATION TO BE COMPLETED IN ACCORDANCE WITH MANUFACTURER'S SPECIFICATIONS.  
 2. DO NOT SCALE DRAWING  
 3. THIS DRAWING IS INTENDED FOR USE BY ARCHITECTS, ENGINEERS, CONTRACTORS, CONSULTANTS AND DESIGN PROFESSIONALS FOR PLANNING PURPOSES ONLY. THIS DRAWING MAY NOT BE USED FOR CONSTRUCTION.  
 4. ALL INFORMATION CONTAINED HEREIN WAS CURRENT AT THE TIME OF DEVELOPMENT BUT MUST BE REVIEWED AND APPROVED BY THE PRODUCT MANUFACTURER TO BE CONSIDERED ACCURATE.  
 5. CONTRACTOR'S NOTE: FOR PRODUCT AND COMPANY INFORMATION VISIT www.CADdetails.com/info AND ENTER REFERENCE NUMBER 2896-065.

2896-065  
 PROTECTED BY COPYRIGHT ©2019 CADDETAILS.COM LTD.  
 REVISION DATE 19/02/2019  
 CADdetails.com

**NUKK**

TTF ENGINEERING  
 FOTENN Planning + Design  
 Palmer PART OF SLR  
 GRADIENTWIND ENGINEERS & SCIENTISTS  
 LRL ENGINEERING  
 25:6 ARCHITECTURE URBAN DESIGN

**Ruhland & Associates Ltd**  
 landscape architecture • urban design • site planning  
 Ph 613-224-4744 Fx 613-224-2331 info@ral.ca www.ral.ca

6			
5			
4			
3	Re-Issued for SPC	2024/02/22	
2	Re-Issued for SPC	2023/12/14	
1	Issued for SPC	2023/08/22	

DESIGNED BY / CONDU PAR M. Ruhland	CHECKED BY / VERIFIE PAR M. Ruhland
DRAWN BY / DRESSE PAR T. Frost / V. Odusanya	SCALE / ECHELLE AS SHOWN

ARCHITECT CONSULTANT

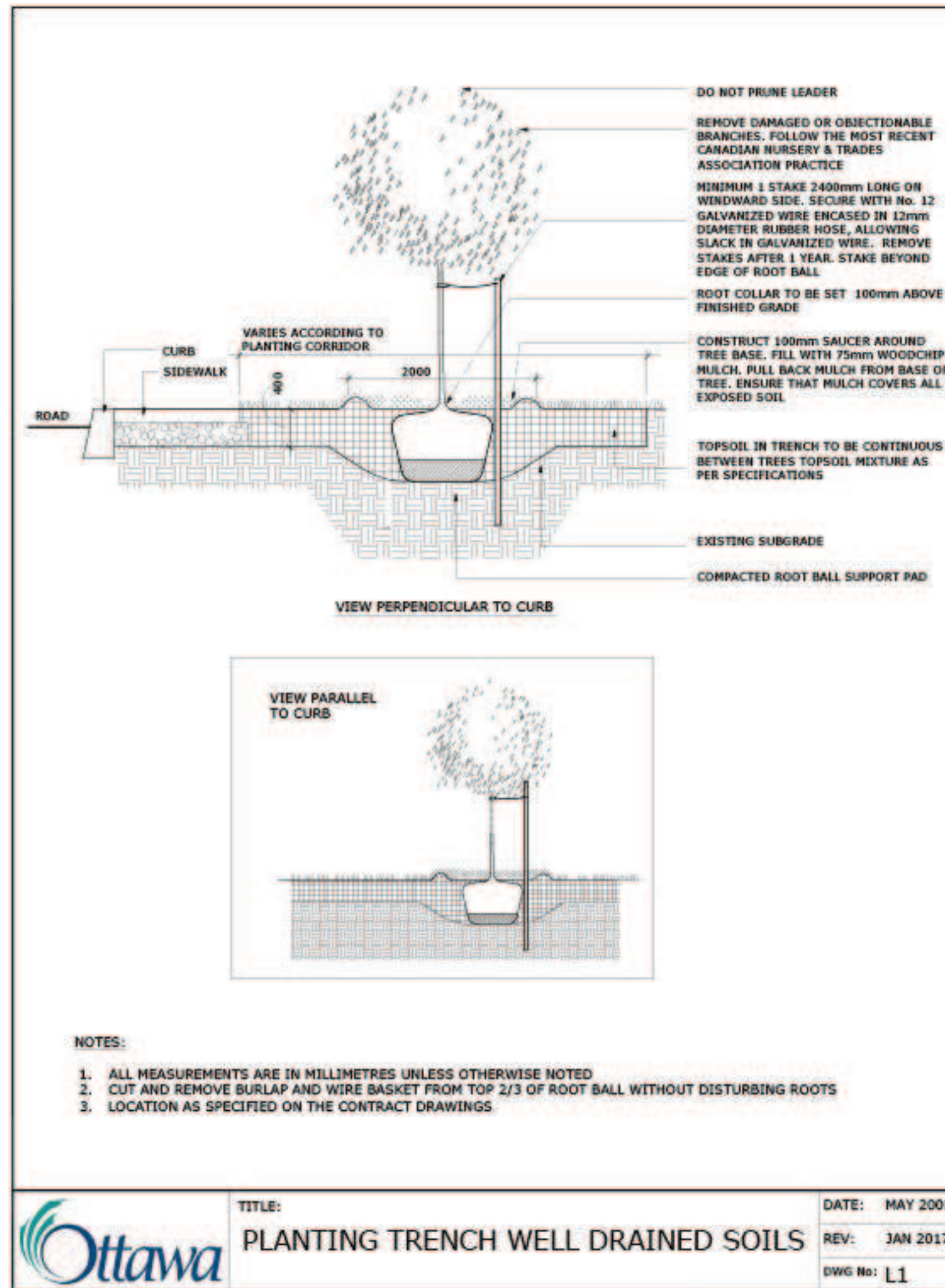
CONSULTANT CONSULTANT

PROJECT / LOCATION  
**THE NUKK**  
 652 FLAGSTAFF DRIVE,  
 OTTAWA ON.

DRAWING  
**LANDSCAPE PLAN**

PROJECT NO.  
23-1719

SHEET NO.  
**L-02**



**TREE SOIL VOLUME REQUIREMENTS:**

STANDARD TREE SOIL VOLUMES QUANTITIES INCLUDE THE TOP 900-1000mm OF SOIL/EXISTING SUBSOIL LAYER TO CALCULATE TOTAL SOIL VOLUMES REQUIRED BY CITY OF OTTAWA FOR SUSTAINABLE TREE GROWTH. WHERE LARGER SOFT AREAS ARE AVAILABLE, THE TOP 400-500mm LAYER IS USED TO CALCULATE SOIL VOLUMES.

WHERE EXISTING MATERIAL BELOW THE SPECIFIED TOPSOIL IS NOT CONDUCTIVE TO TREE GROWTH, AN ADDITIONAL LAYER OF PLANTING MEDIUM IS TO BE INSTALLED BELOW SPECIFIED TOPSOIL DEPTH TO OBTAIN THE SOIL VOLUME DEPTH REQUIRED.

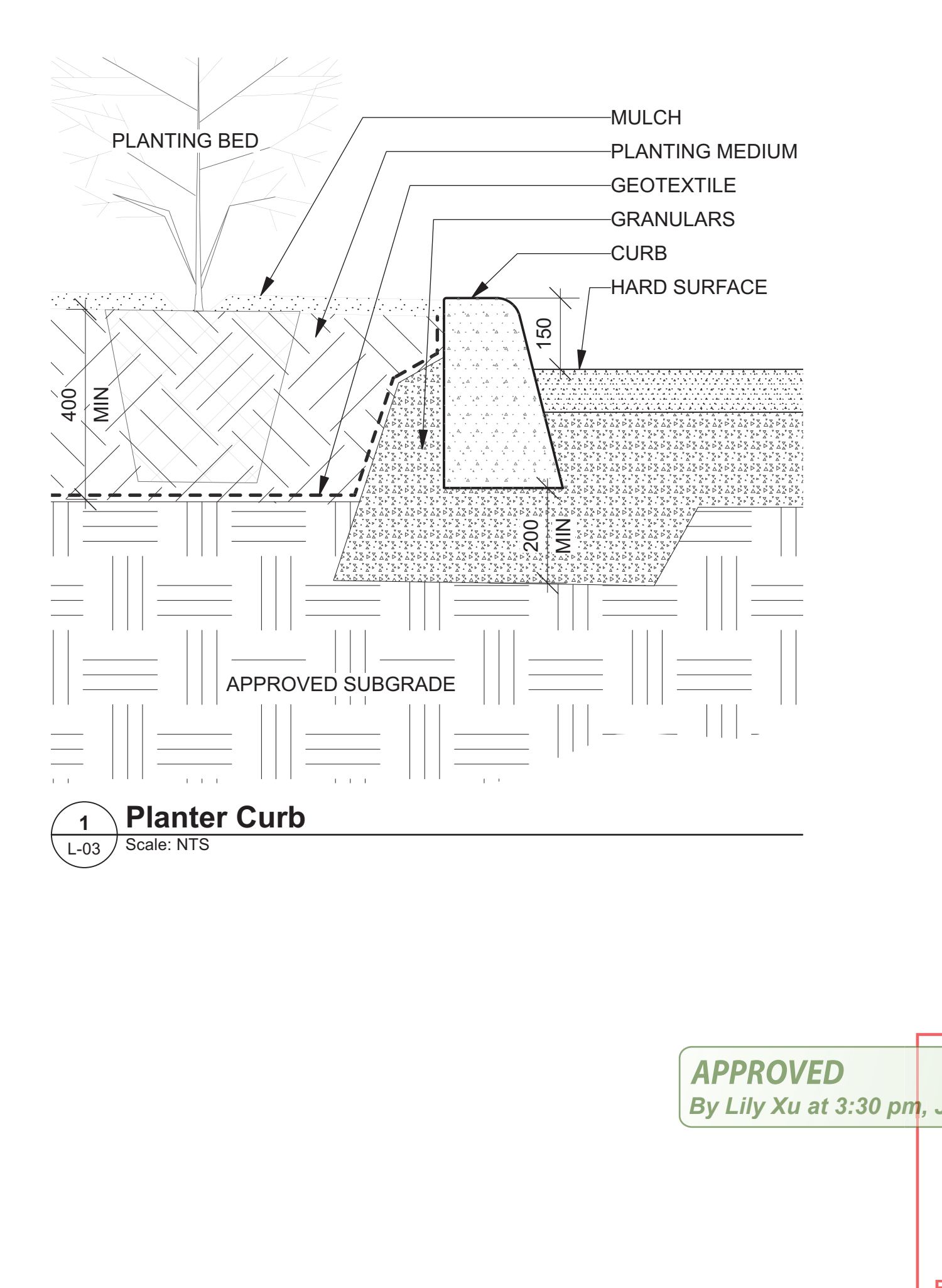
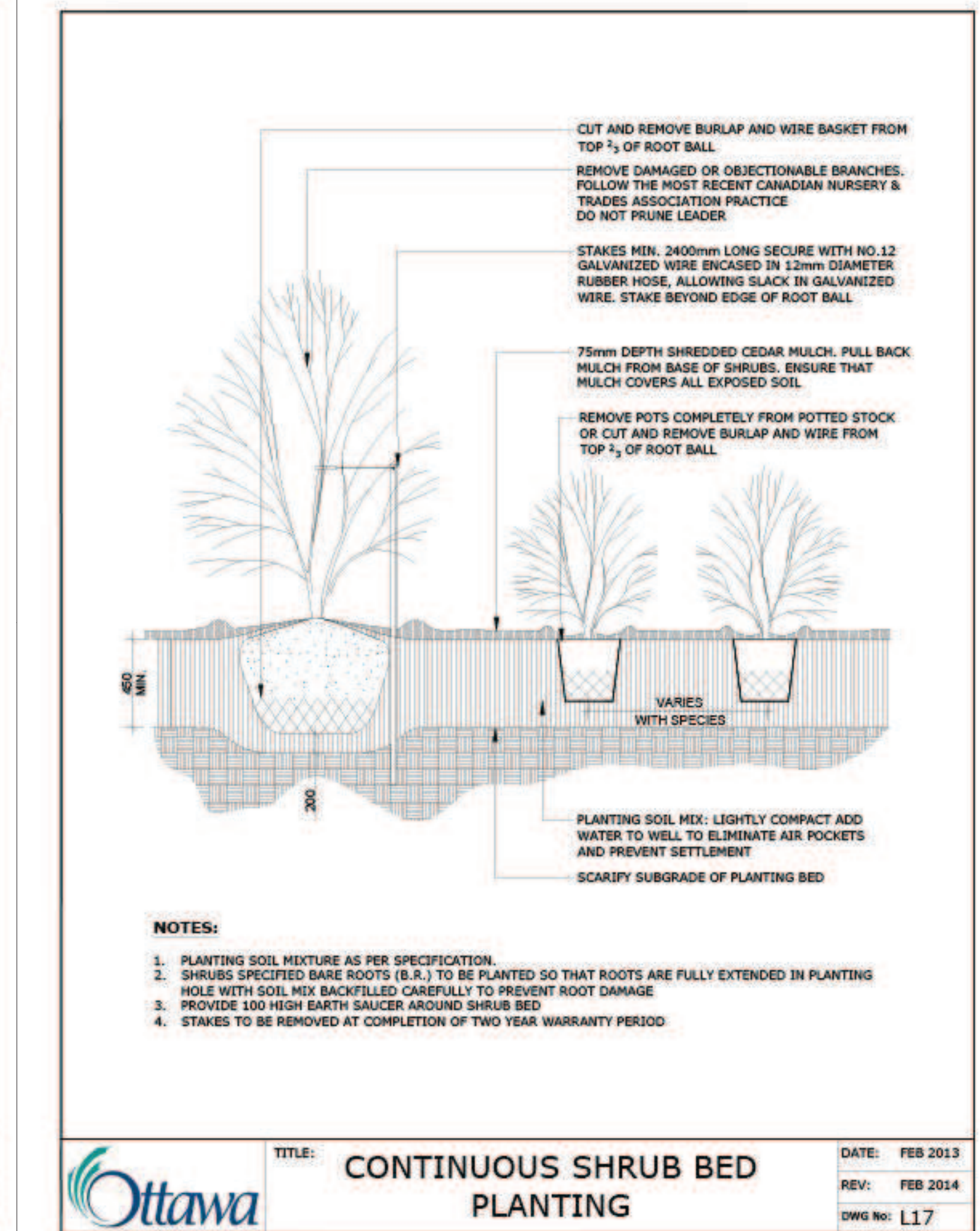
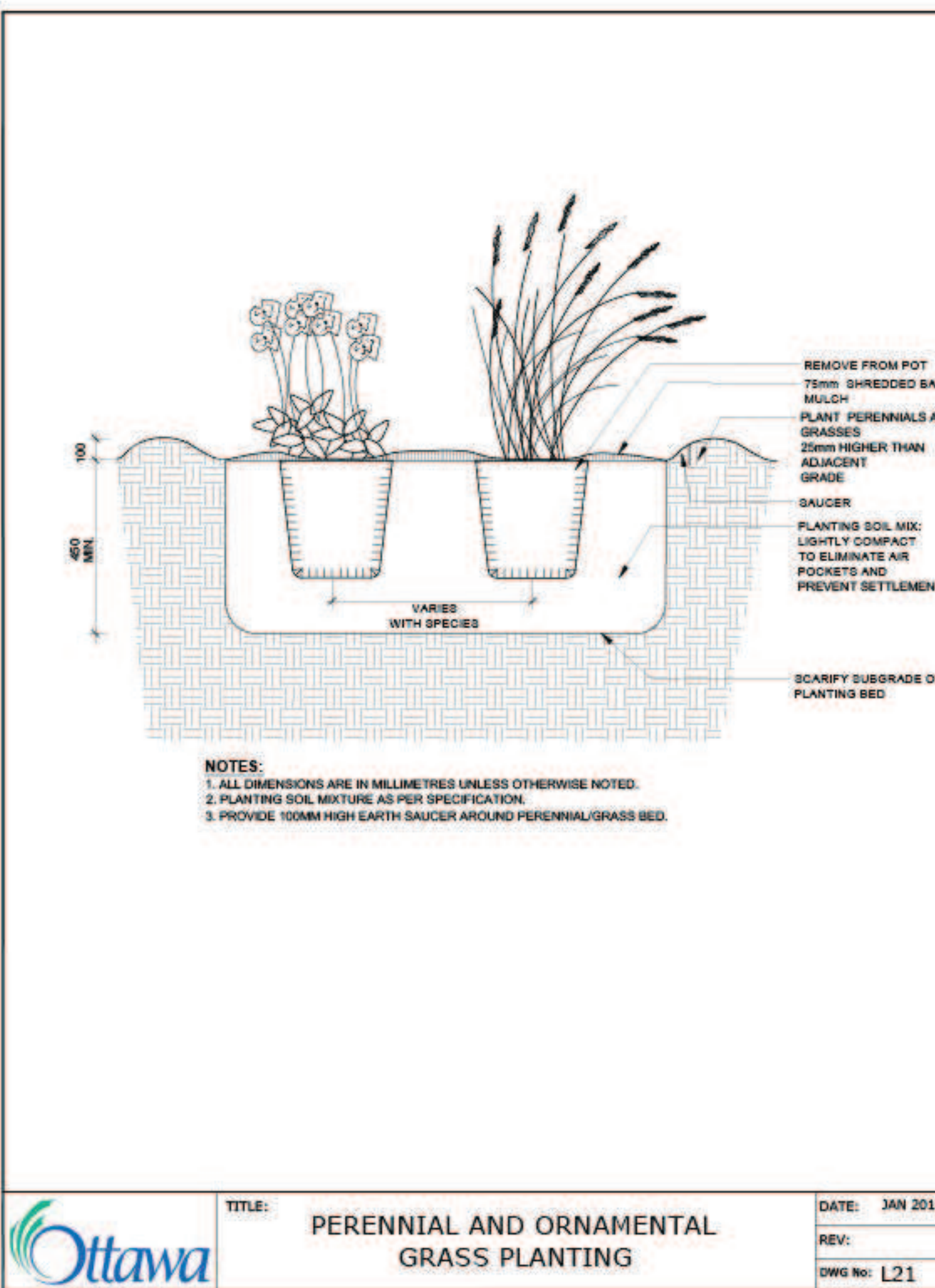
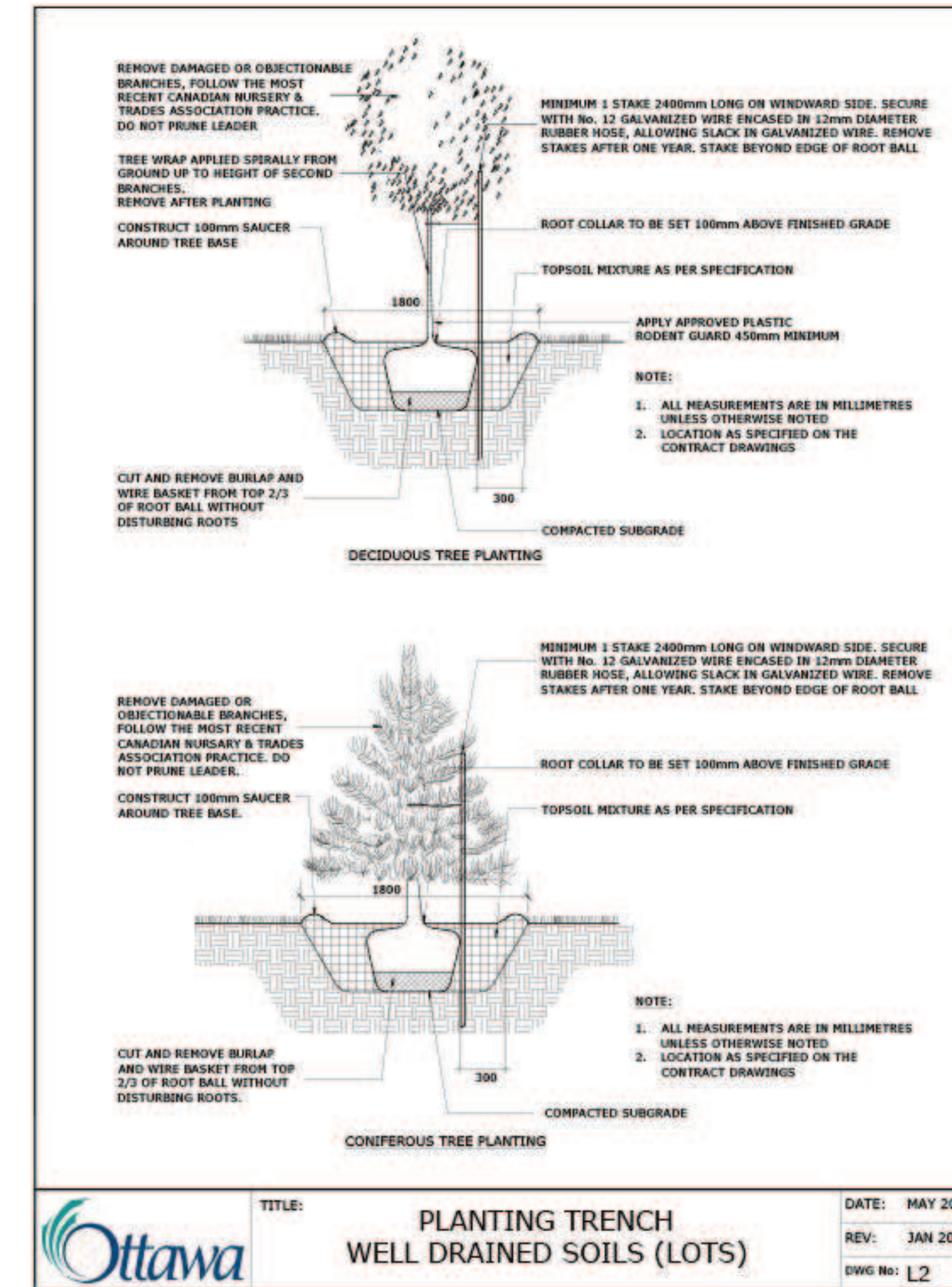
REFER TO SOIL VOLUME CHART AND PLANS FOR AREA WHERE TREE SOIL VOLUMES ARE REQUIRED.

**TREE SOIL VOLUME REQUIREMENTS:**

STANDARD TREE SOIL VOLUMES QUANTITIES INCLUDE THE TOP 900-1000mm OF IMPORTED AND EXISTING SOIL/SUBSOIL LAYER TO CALCULATE TOTAL SOIL VOLUMES REQUIRED BY CITY OF OTTAWA FOR SUSTAINABLE TREE GROWTH. WHERE LARGER SOFT AREAS ARE AVAILABLE WITH APPROVED EXISTING TOPSOIL AND SUBSOIL, IMPORTED TOPSOIL ONLY AS PER DETAIL L-2.

WHERE EXISTING MATERIAL BELOW THE SPECIFIED TOPSOIL IS NOT CONDUCTIVE TO TREE GROWTH, AN ADDITIONAL LAYER OF 400mm PLANTING MEDIUM AND APPROVED SUBSOIL IS TO BE INSTALLED BELOW SPECIFIED TOPSOIL DEPTH TO OBTAIN THE SOIL VOLUME DEPTH REQUIRED.

REFER TO SOIL VOLUME NOTES.



6			
5			
4			
3	Re-Issued for SPC	2024/02/22	
2	Re-Issued for SPC	2023/12/14	
1	Issued for SPC	2023/08/22	

DESIGNED BY / CONQU PAR M. Ruhland	CHECKED BY / VERIFIE PAR M. Ruhland
DRAWN BY / DESINE PAR T. Frost / V. Odusanya	SCALE / ECHELLE

ARCHITECT

CONSULTANT

CONSULTANT	CONSULTANT
------------	------------

PROJECT / LOCATION

**THE NUKK**

652 FLAGSTAFF DRIVE,  
OTTAWA ON.

DRAWING

**DETAILS**

PROJECT NO.	SHEET NO.
23-1719	<b>L-03</b>