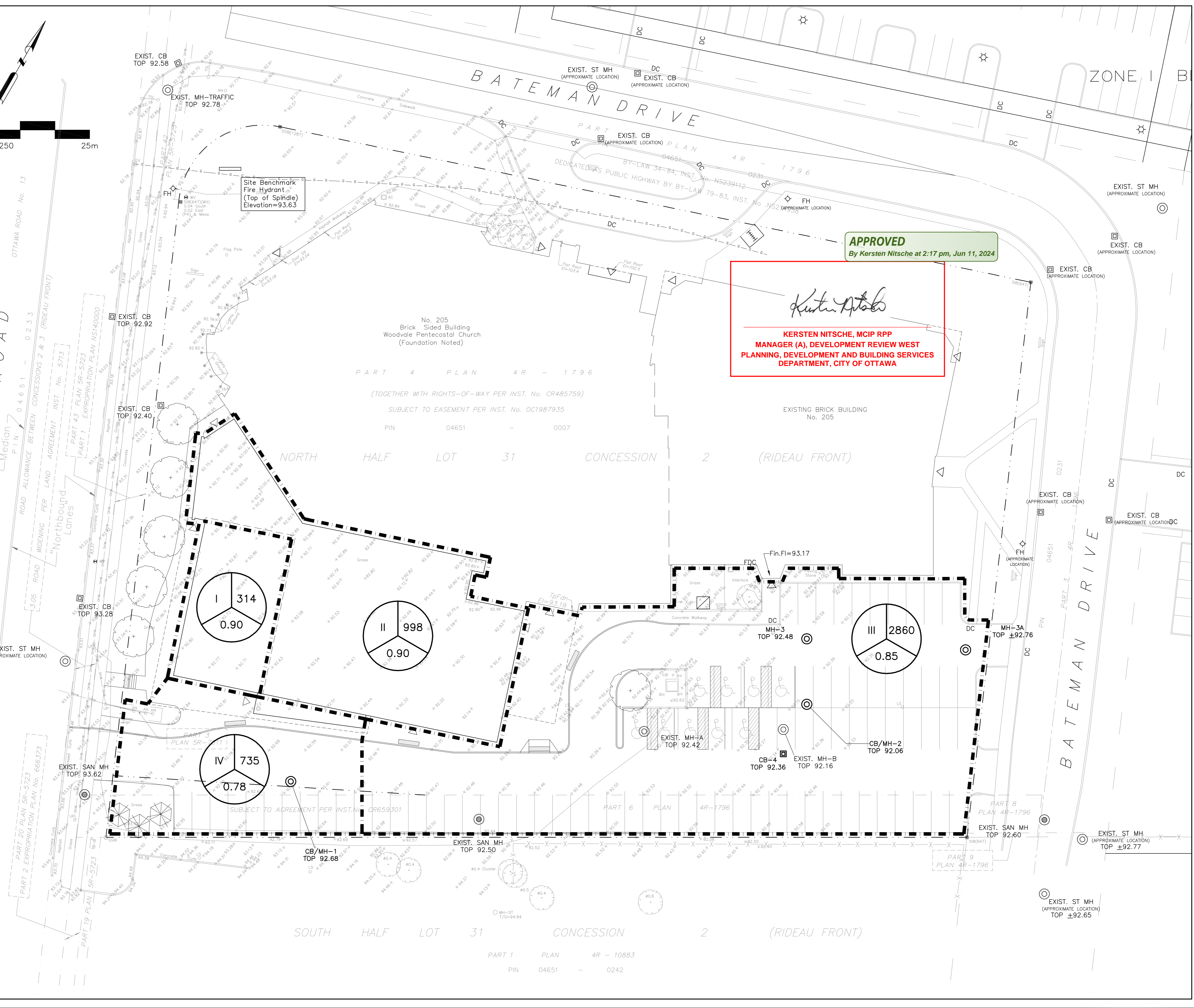


GREENBANK ROAD

BATEMAN DRIVE

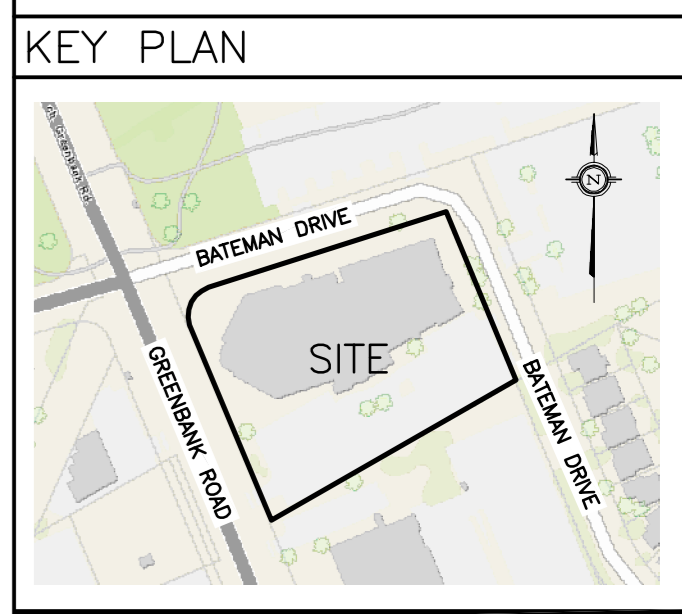
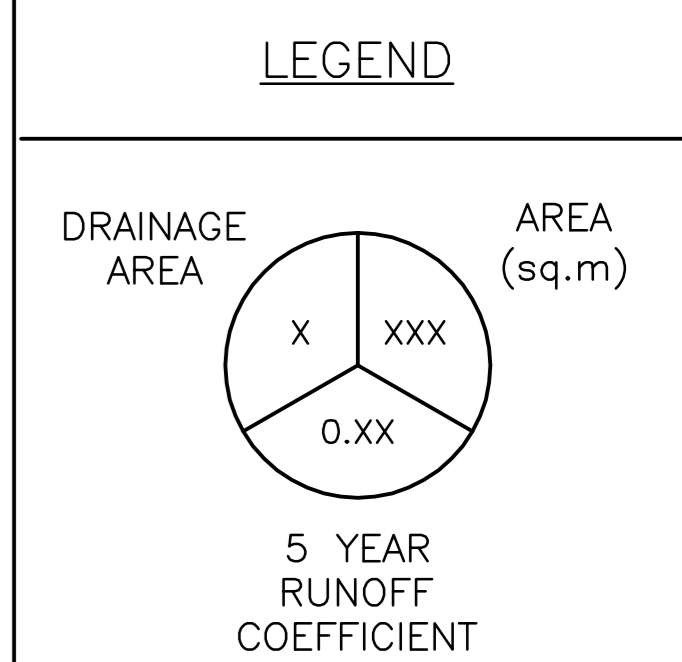
BATEMAN DRIVE



Site Benchmark
Fire Hydrant
(Top of Spindle)
Elevation=93.63

APPROVED
By Kersten Nitsche at 2:17 pm, Jun 11, 2024

Kersten Nitsche
KERSTEN NITSCHKE, MCIP RPP
MANAGER (A), DEVELOPMENT REVIEW WEST
PLANNING, DEVELOPMENT AND BUILDING SERVICES
DEPARTMENT, CITY OF OTTAWA

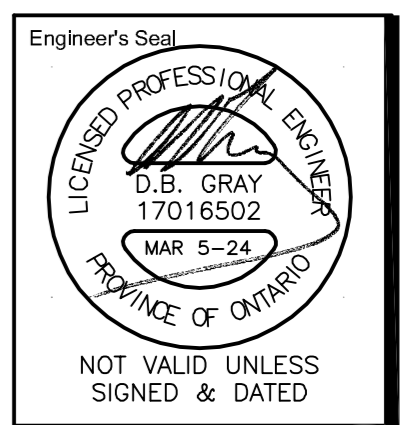


No.	DATE	REVISION
6	MAR 5-24	RE-ISSUED FOR APPROVAL
5	JAN 2-24	RE-ISSUED FOR APPROVAL
4	DEC 4-23	RE-ISSUED FOR APPROVAL
3	AUG 31-23	ISSUED FOR APPROVAL
2	JUL 20-23	ISSUED FOR COORDINATION
1	JAN 28-22	ISSUED FOR COORDINATION

D. B. GRAY ENGINEERING INC.
Stormwater Management - Grading & Drainage - Storm & Sanitary Sewers - Watermain
700 Long Point Circle 613-425-8044
Ottawa, Ontario d.gray@dbgrayengineering.com

Project
PROPOSED WOODVALE PENTECOSTAL CHURCH ADDITION, 205 GREENBANK ROAD OTTAWA, ONTARIO

Drawing Title
DRAINAGE PLAN



Drawn D.B.G.
H. Scale 1:250
V. Scale
Date JAN 28-22
Job No. 20121

Drawing No.
C-7
of 7

NOT VALID UNLESS SIGNED & DATED