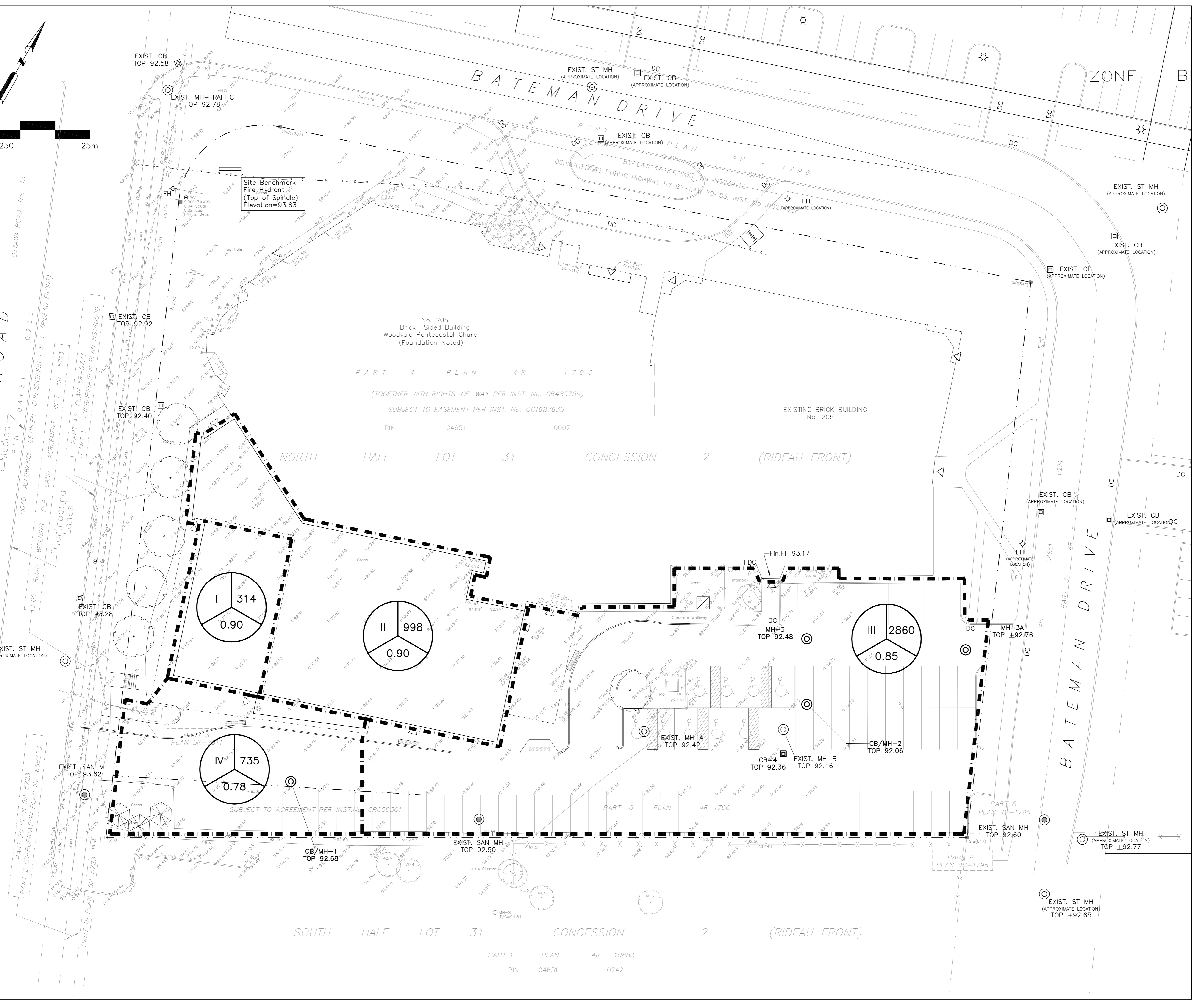


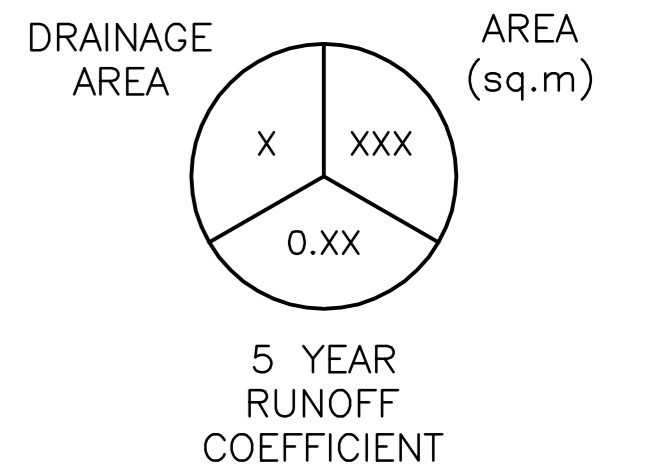
GREENBANK ROAD

BATEMAN DRIVE

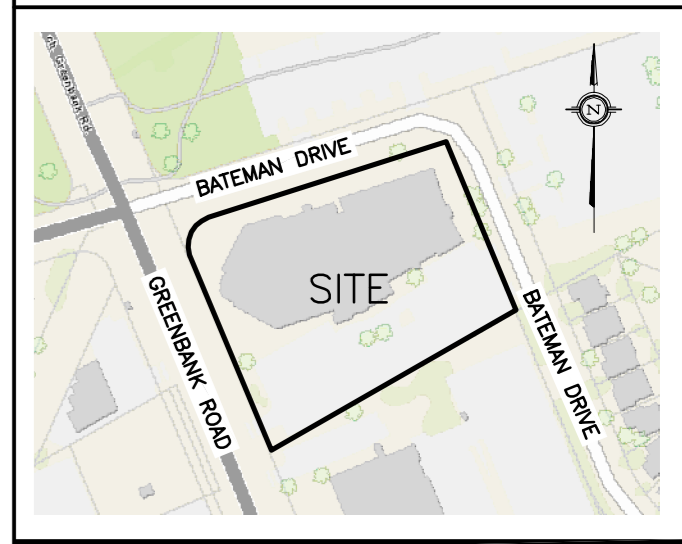
BATEMAN DRIVE



LEGEND



KEY PLAN

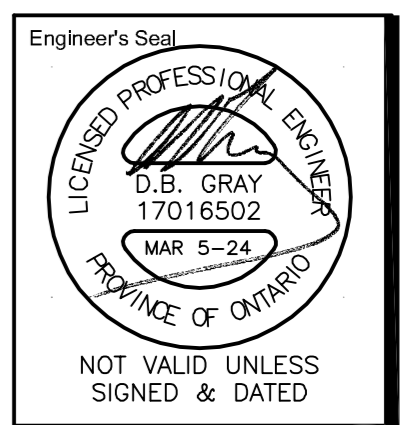


No.	DATE	REVISION
6	MAR 5-24	RE-ISSUED FOR APPROVAL
5	JAN 2-24	RE-ISSUED FOR APPROVAL
4	DEC 4-23	RE-ISSUED FOR APPROVAL
3	AUG 31-23	ISSUED FOR APPROVAL
2	JUL 20-23	ISSUED FOR COORDINATION
1	JAN 28-22	ISSUED FOR COORDINATION

D. B. GRAY ENGINEERING INC.
 Stormwater Management - Grading & Drainage - Storm & Sanitary Sewers - Watermain
 700 Long Point Circle 613-425-8044
 Ottawa, Ontario d.gray@dbgrayengineering.com

Project
PROPOSED WOODVALE PENTECOSTAL CHURCH ADDITION, 205 GREENBANK ROAD
 OTTAWA, ONTARIO

DRAINAGE PLAN



Drawn D.B.G.
 H. Scale 1:250
 V. Scale
 Date JAN 28-22
 Job No. 20121

Drawing No.
C-7
 of 7

NOT VALID UNLESS SIGNED & DATED