

APPROVED
By Lily Xu at 9:16 am, May 14, 2024

Lily Xu
LILY XU, MCIP, RPP
MANAGER, DEVELOPMENT REVIEW SOUTH
PLANNING, DEVELOPMENT, AND BUILDING SERVICES
DEPARTMENT, CITY OF OTTAWA



| No. | Description | Date |
|-----|-------------------------------------|----------|
| 4 | ISSUED FOR ZBLA AND SPC SUBMISSION | 04/18/24 |
| 3 | ISSUED FOR SPA PHASE 3 RESUBMISSION | 04/10/24 |
| 2 | ISSUED FOR SPA PHASE 3 RESUBMISSION | 02/28/24 |
| 1 | ISSUED FOR REVISED SITE PLAN APPL. | 01/22/24 |



All measurements are to be checked and verified on site by the contractor before proceeding with the work. Do not scale the drawings.



Owner:
uOttawa
UNIVERSITY OF OTTAWA
451 SMYTH ROAD
OTTAWA, ONTARIO, K1H 8M5
TEL: 613-229-7104

Applicant:
PCL
PCL CONSTRUCTORS CANADA INC.
49 AURIGA DRIVE
NEEDHAM, ONTARIO, K2E 8A1
TEL: 613-229-7104

Consultants:
wsp
WSP
5611 QUEENSWAY DRIVE, SUITE 300
OTTAWA, ONTARIO, K2B 9K2
TEL: 613-229-7800

Fairhall Moffatt & Woodland
ARCHITECTS
FARRHALL MOFFATT & WOODLAND LTD.
600 TERRY FOX DRIVE, SUITE 100
OTTAWA, ONTARIO, K2L 4S9
TEL: 613-591-1495

CLELAND JARDINE
ARCHITECTS
CLELAND JARDINE ENGINEERING LTD.
580 TERRY FOX DRIVE
KANATA, ONTARIO, K2L 4S9
TEL: 613-591-1495

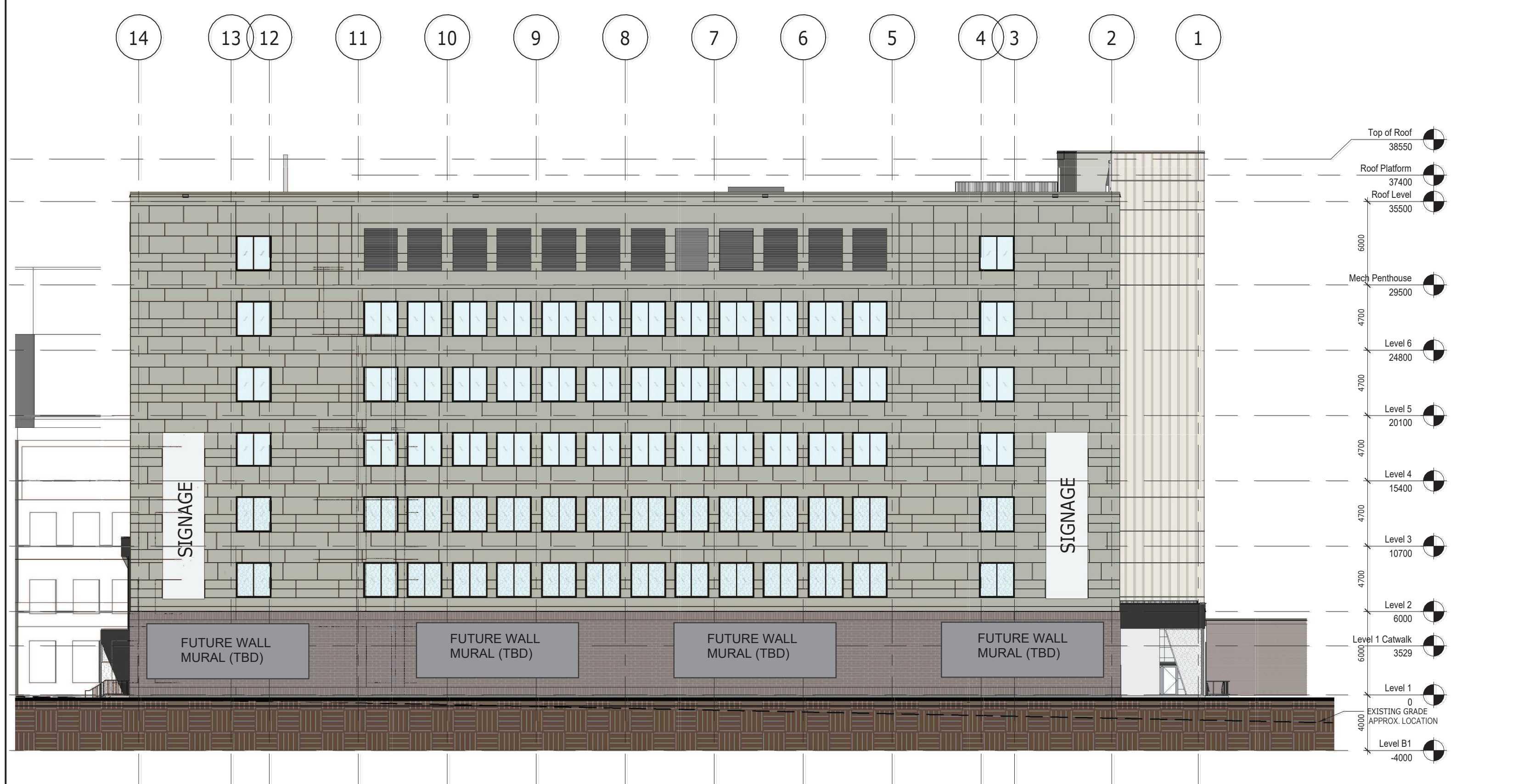
MERRICK CANADA
MERRICK
580 TERRY FOX DRIVE
KANATA, ONTARIO, K2L 4S9
TEL: 613-592-5289

Project:
ADVANCED MEDICAL RESEARCH CENTRE

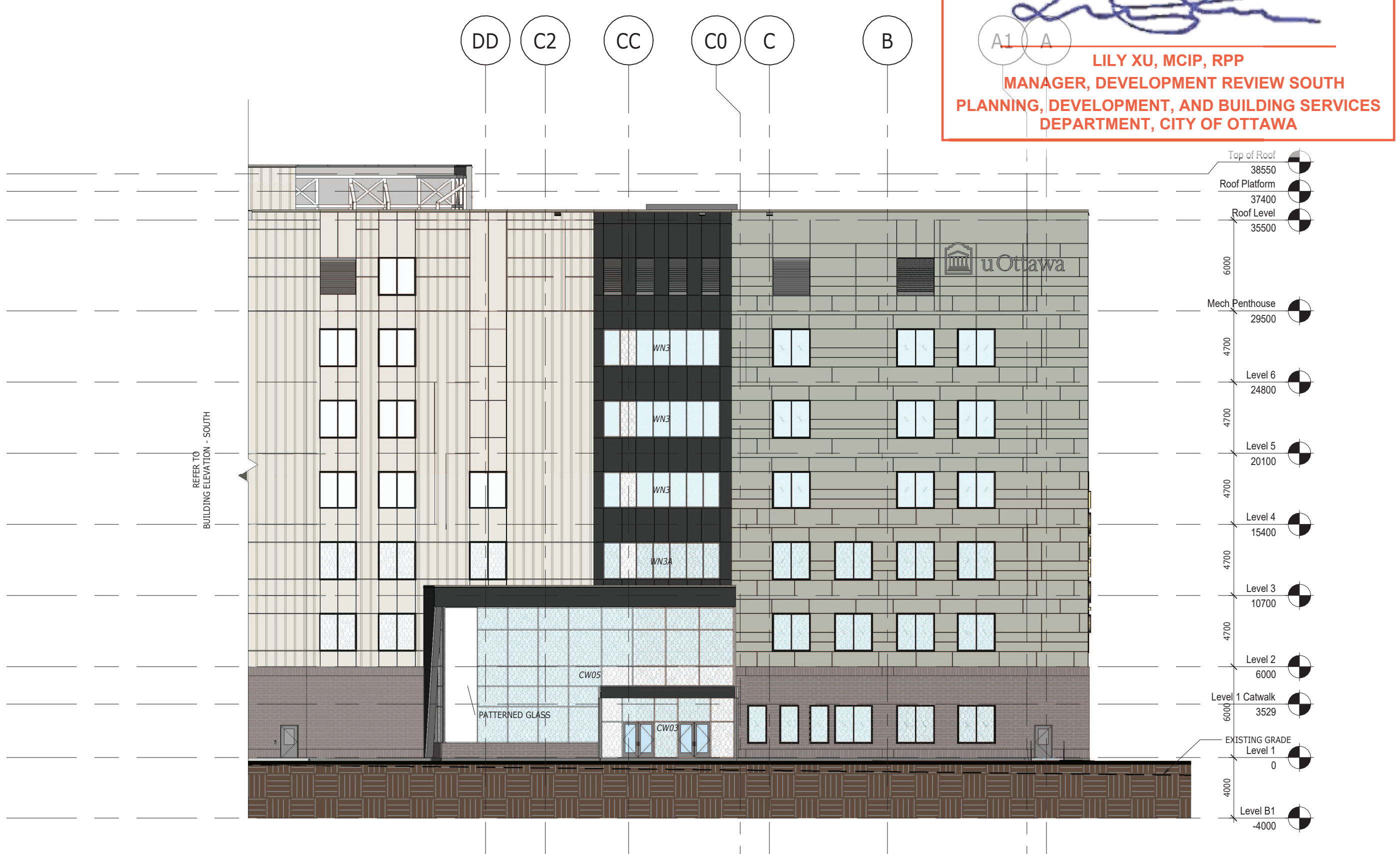
Address:
**451 SMYTH ROAD
OTTAWA, ON K1H 8M5**

Drawn By: [Blank] Date: **04/18/2024**
Checked By: [Blank] Scale: **1:250**

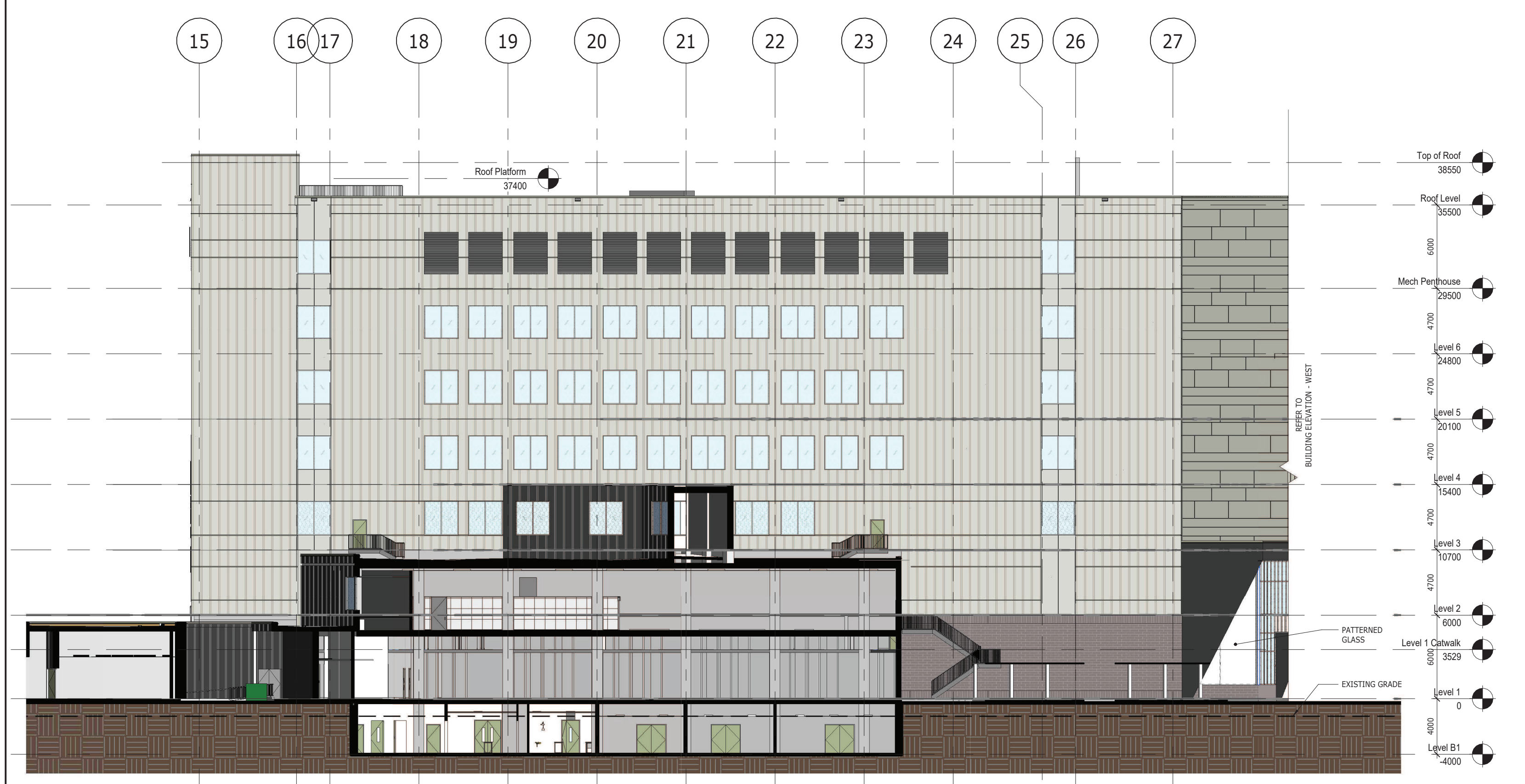
Sheet Title:
BUILDING ELEVATIONS
Sheet Number:
B500.1



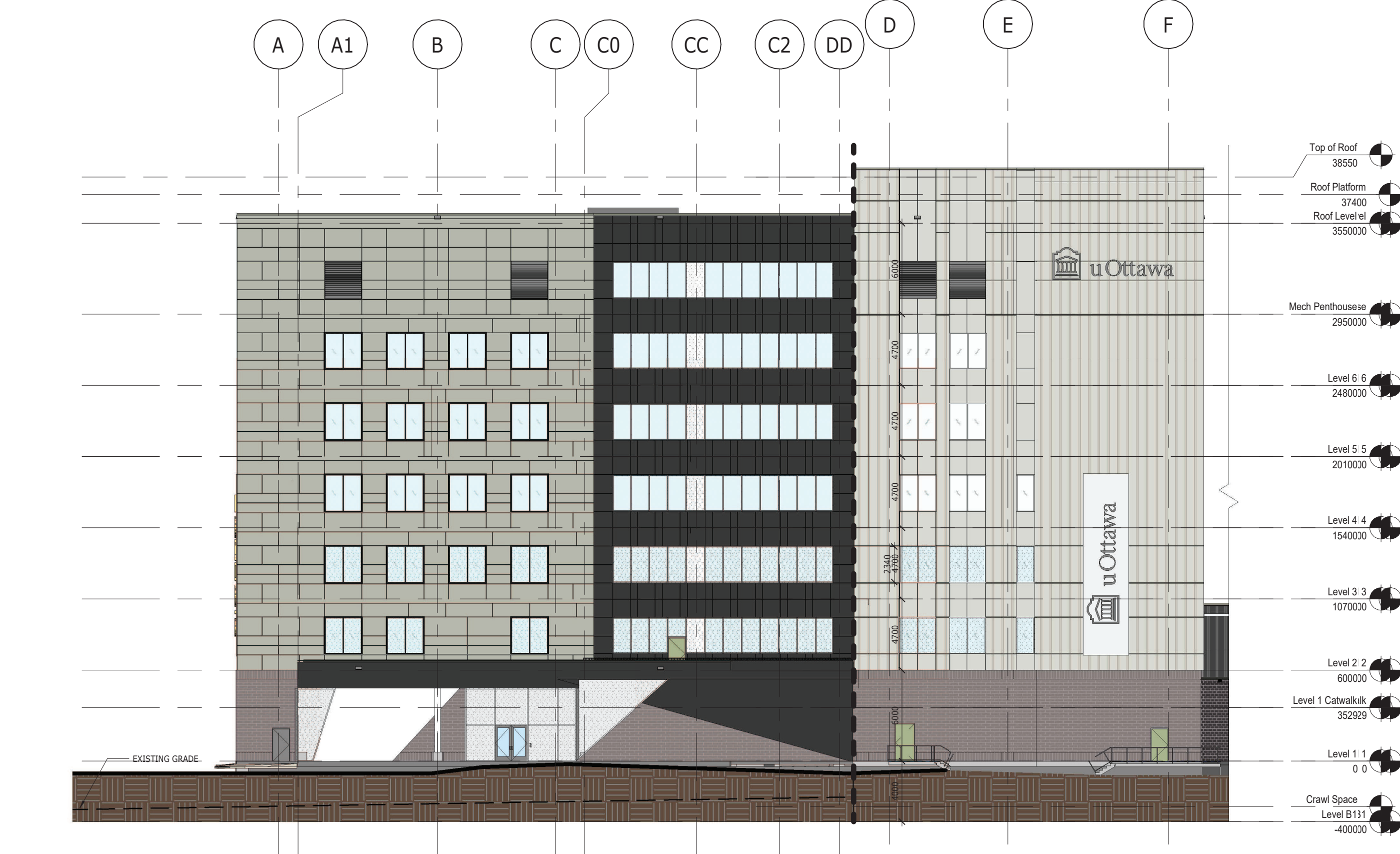
BUILDING ELEVATION - NORTH 4
1:250 B500.1



BUILDING ELEVATION - EAST 2
1:250 B500.1



BUILDING ELEVATION - SOUTH 3
1:250 B500.1



BUILDING ELEVATION - WEST 1
1:250 B500.1

- CEMENT PANELS
- METAL GRATING
- MECHANICAL LOUVERS
- BRICK VENEER
- BLACK COLOURED METAL SIDING
- BLACK COLOURED ALUMINUM PANELS
- WHITE COLOURED ALUMINUM PANELS
- WHITE COLOURED METAL SIDING



SCALE BAR 1:250

FILE NO. 1071-12-24-0021

APPROVED
By Lily Xu at 9:16 am, May 14, 2024

Lily Xu
LILY XU, MCIP, RPP
MANAGER, DEVELOPMENT REVIEW SOUTH
PLANNING, DEVELOPMENT, AND BUILDING SERVICES
DEPARTMENT, CITY OF OTTAWA

-  CEMENT PANELS
-  METAL GRATING
-  MECHANICAL LOUVERS
-  BRICK VENEER
-  BLACK
-  BLACK
-  WHITE
-  WHITE COLOURED METAL SIDING



| No. | Description | Date |
|-----|-------------------------------------|----------|
| 4 | ISSUED FOR ZBLA AND SPC SUBMISSION | 04/18/24 |
| 3 | ISSUED FOR SPA PHASE 3 RESUBMISSION | 04/10/24 |
| 2 | ISSUED FOR SPA PHASE 3 RESUBMISSION | 02/28/24 |
| 1 | ISSUED FOR REVISED SITE PLAN APPL. | 01/22/24 |



All measurements are to be checked and verified on site by the contractor before proceeding with the work. Do not scale the drawings.

PARKIN

Owner:
uOttawa
UNIVERSITY OF OTTAWA
451 SMYTH ROAD
OTTAWA, ONTARIO, K1H 8M5
TEL: 613-229-7104

Applicant:
PCL
PCL CONSTRUCTORS CANADA INC.
49 AURIGA DRIVE
MERRICK, ONTARIO, K2E 8A1
TEL: 613-229-7104

Consultants:
wsp
WSP
2511 QUEENSWAY DRIVE, SUITE 300
OTTAWA, ONTARIO, K2B 9K2
TEL: 613-229-1300

Fairhall Moffatt & Woodland
FARRALL MOFFATT & WOODLAND LTD.
600 TERRY FOX DRIVE, SUITE 100
OTTAWA, ONTARIO, K2L 4B9
TEL: 613-591-1495

CLELAND JARDINE
CLELAND JARDINE ENGINEERING LTD.
580 TERRY FOX DRIVE
KANATA, ONTARIO, K2L 4B9
TEL: 613-591-1495

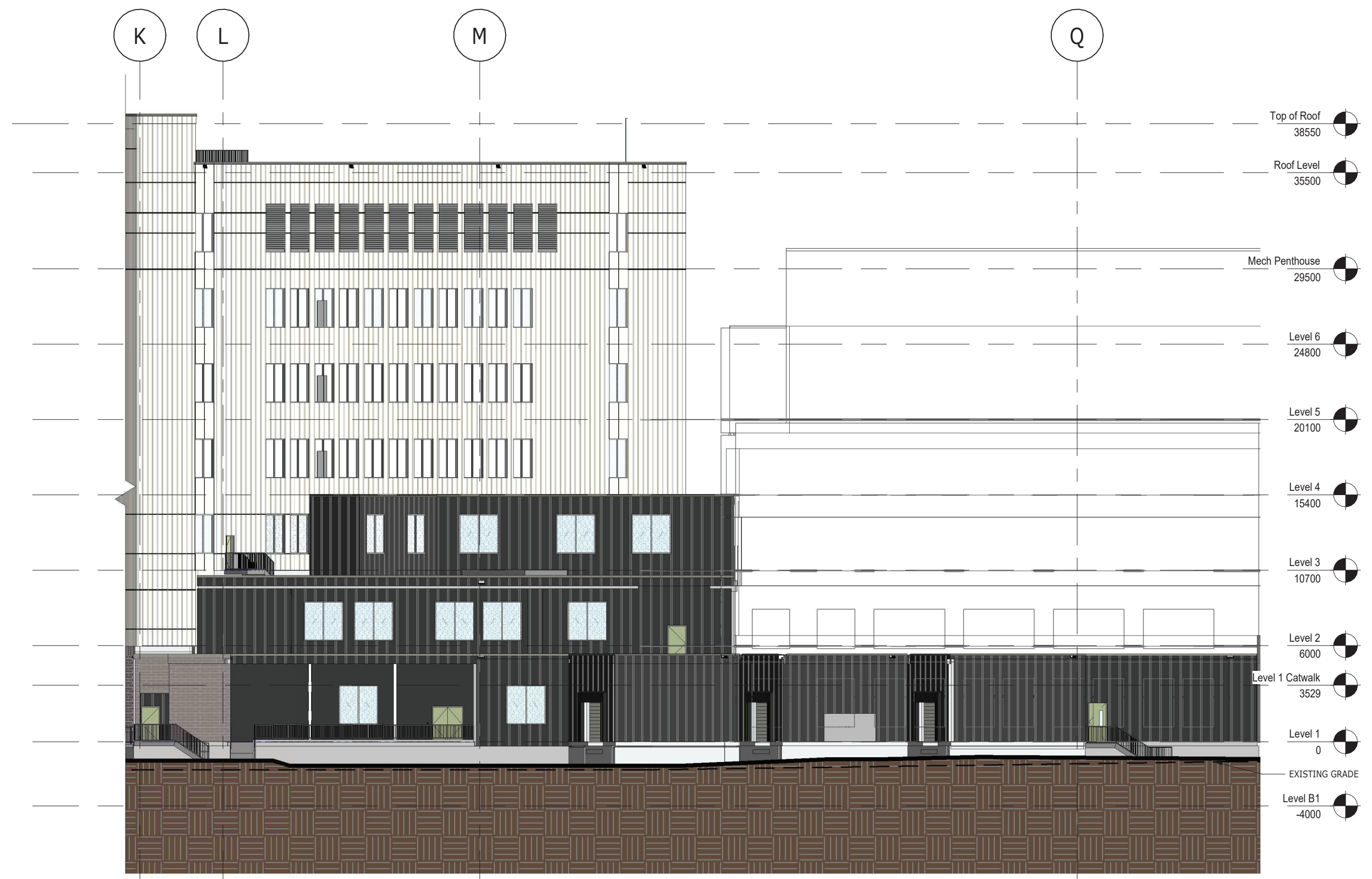
MERRICK CANADA
MERRICK
580 TERRY FOX DRIVE
KANATA, ONTARIO, K2L 4B9
TEL: 613-592-5289









Project:
ADVANCED MEDICAL RESEARCH CENTRE

Address:
**451 SMYTH ROAD
OTTAWA, ON K1H 8M5**

Drawn By: _____ Date: **04/18/2024**
Checked By: _____ Scale: **1:250**

Sheet Title:
BUILDING ELEVATIONS S/R
Sheet Number:
B500.2



-  CEMENT PANELS
-  METAL GRATING
-  MECHANICAL LOUVERS
-  BRICK VENEER
-  BLACK COLOURED METAL SIDING
-  BLACK COLOURED ALUMINUM PANELS
-  WHITE COLOURED ALUMINUM PANELS
-  WHITE COLOURED METAL SIDING



SCALE BAR 1:250

LOADING DOCKS - OVERALL ELEVATION Copy 2 1
1:250 B500.2

FILE NO. 107-12-24-0021 PLOT NO. 1004