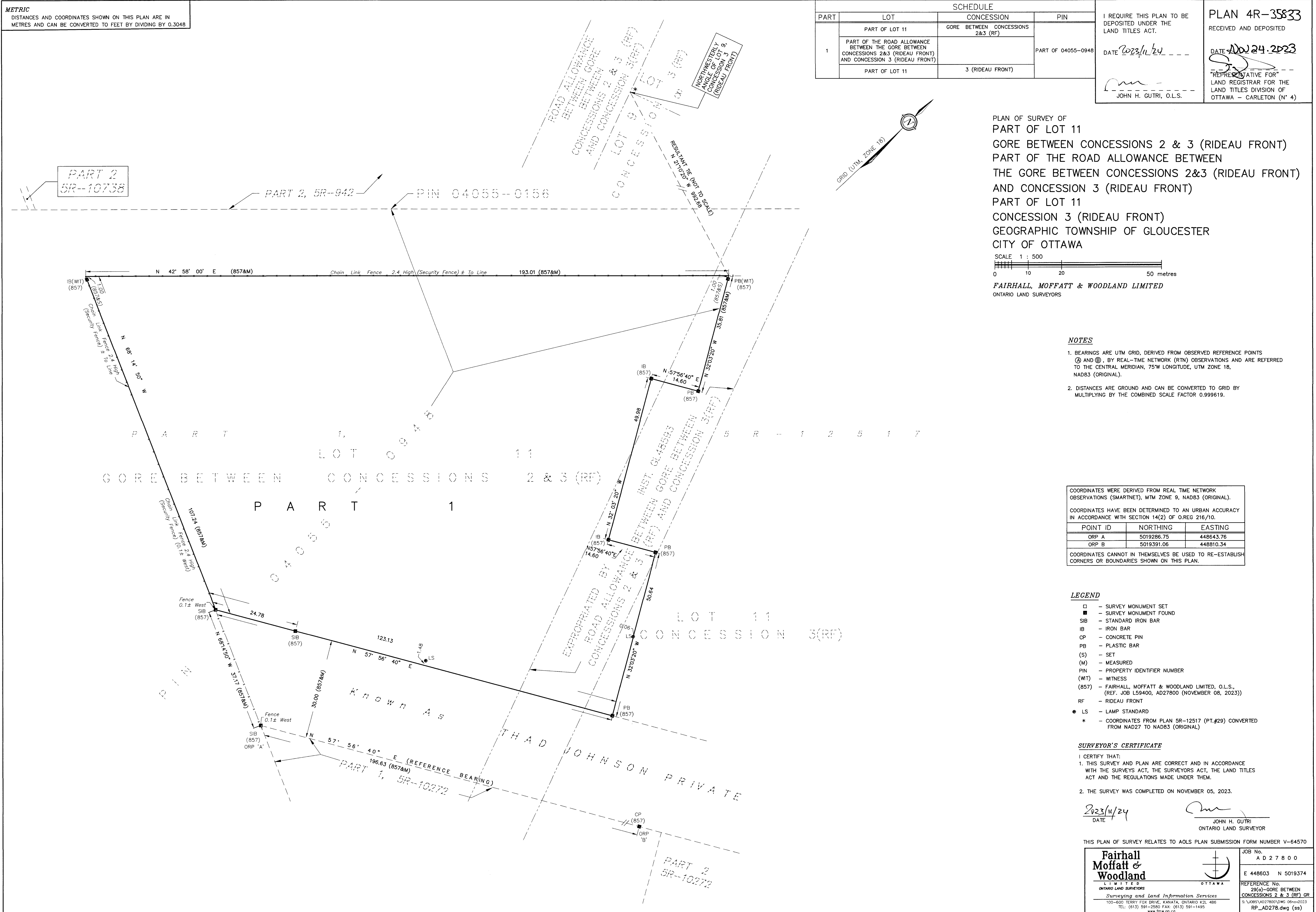


METRIC
DISTANCES AND COORDINATES SHOWN ON THIS PLAN ARE IN METRES AND CAN BE CONVERTED TO FEET BY DIVIDING BY 0.3048

SCHEDULE			
PART	LOT	CONCESSION	PIN
1	PART OF LOT 11	GORE BETWEEN CONCESSIONS 2&3 (RF)	PART OF 04055-0948
	PART OF THE ROAD ALLOWANCE BETWEEN THE GORE BETWEEN CONCESSIONS 2&3 (RIDEAU FRONT) AND CONCESSION 3 (RIDEAU FRONT)		
	PART OF LOT 11	3 (RIDEAU FRONT)	

I REQUIRE THIS PLAN TO BE DEPOSITED UNDER THE LAND TITLES ACT.
DATE 2023/11/24
JOHN H. GUTRI, O.L.S.

PLAN 4R-35833
RECEIVED AND DEPOSITED
DATE NOV 24 2023
REPRESENTATIVE FOR
LAND REGISTRAR FOR THE
LAND TITLES DIVISION OF
OTTAWA - CARLETON (N° 4)



PLAN OF SURVEY OF
PART OF LOT 11
GORE BETWEEN CONCESSIONS 2 & 3 (RIDEAU FRONT)
PART OF THE ROAD ALLOWANCE BETWEEN
THE GORE BETWEEN CONCESSIONS 2&3 (RIDEAU FRONT)
AND CONCESSION 3 (RIDEAU FRONT)
PART OF LOT 11
CONCESSION 3 (RIDEAU FRONT)
GEOGRAPHIC TOWNSHIP OF GLOUCESTER
CITY OF OTTAWA

SCALE 1 : 500
0 10 20 50 metres
FAIRHALL, MOFFATT & WOODLAND LIMITED
ONTARIO LAND SURVEYORS

- NOTES**
- BEARINGS ARE UTM GRID, DERIVED FROM OBSERVED REFERENCE POINTS (S) AND (M), BY REAL-TIME NETWORK (RTN) OBSERVATIONS AND ARE REFERRED TO THE CENTRAL MERIDIAN, 75°W LONGITUDE, UTM ZONE 18, NAD83 (ORIGINAL).
 - DISTANCES ARE GROUND AND CAN BE CONVERTED TO GRID BY MULTIPLYING BY THE COMBINED SCALE FACTOR 0.999619.

COORDINATES WERE DERIVED FROM REAL TIME NETWORK OBSERVATIONS (SMARTNET), MTM ZONE 9, NAD83 (ORIGINAL).
COORDINATES HAVE BEEN DETERMINED TO AN URBAN ACCURACY IN ACCORDANCE WITH SECTION 14(2) OF O.REG 216/10.

POINT ID	NORTHING	EASTING
ORP A	5019286.75	448643.76
ORP B	5019391.06	448810.34

COORDINATES CANNOT IN THEMSELVES BE USED TO RE-ESTABLISH CORNERS OR BOUNDARIES SHOWN ON THIS PLAN.

- LEGEND**
- - SURVEY MONUMENT SET
 - - SURVEY MONUMENT FOUND
 - SIB - STANDARD IRON BAR
 - IB - IRON BAR
 - CP - CONCRETE PIN
 - PB - PLASTIC BAR
 - (S) - SET
 - (M) - MEASURED
 - PIN - PROPERTY IDENTIFIER NUMBER
 - (WT) - WITNESS
 - (857) - FAIRHALL, MOFFATT & WOODLAND LIMITED, O.L.S., (REF. JOB L59400, AD27800 (NOVEMBER 08, 2023))
 - RF - RIDEAU FRONT
 - LS - LAMP STANDARD
 - * - COORDINATES FROM PLAN SR-12517 (PT.#29) CONVERTED FROM NAD27 TO NAD83 (ORIGINAL)

SURVEYOR'S CERTIFICATE

I CERTIFY THAT:
1. THIS SURVEY AND PLAN ARE CORRECT AND IN ACCORDANCE WITH THE SURVEYS ACT, THE SURVEYORS ACT, THE LAND TITLES ACT AND THE REGULATIONS MADE UNDER THEM.
2. THE SURVEY WAS COMPLETED ON NOVEMBER 05, 2023.

DATE 2023/11/24
JOHN H. GUTRI
ONTARIO LAND SURVEYOR

THIS PLAN OF SURVEY RELATES TO AOLS PLAN SUBMISSION FORM NUMBER V-64570

Fairhall Moffatt & Woodland LIMITED ONTARIO LAND SURVEYORS Surveying and Land Information Services 100-600 TERRY FOX DRIVE, KANATA, ONTARIO K2L 4B6 TEL: (613) 591-2350 FAX: (613) 591-1426 www.fmw.on.ca	JOB No. A D 2 7 8 0 0
	REFERENCE No. 29(a)-GORE BETWEEN CONCESSIONS 2 & 3 (RF) GR S:\4885\AD27800\DWG_08nov2023 RP_AD278.dwg (52)