

- GENERAL NOTES:**
- COORDINATE AND SCHEDULE ALL WORK WITH OTHER TRADES AND CONTRACTORS.
 - DETERMINE THE EXACT LOCATION, SIZE, MATERIAL AND ELEVATION OF ALL EXISTING UTILITIES PRIOR TO COMMENCING CONSTRUCTION. PROTECT AND ASSUME RESPONSIBILITY FOR ALL EXISTING UTILITIES WHETHER OR NOT SHOWN ON THIS DRAWING.
 - ALL EXISTING WATER AND SEWER SERVICES SERVING THE EXISTING SITE ARE TO BE LOCATED PRIOR TO CONSTRUCTION. EXISTING SERVICES ARE TO BE ABANDONED INCLUDING BLANKING AND CAPPING.
 - OBTAIN ALL NECESSARY PERMITS AND APPROVALS FROM THE CITY OF OTTAWA BEFORE COMMENCING CONSTRUCTION.
 - BEFORE COMMENCING CONSTRUCTION OBTAIN AND PROVIDE PROOF OF COMPREHENSIVE, ALL RISK AND OPERATIONAL LIABILITY INSURANCE FOR \$5,000,000.00. INSURANCE POLICY TO NAME OWNERS, ENGINEERS AND ARCHITECTS AS CO-INSURED.
 - RESTORE ALL DISTURBED AREAS ON-SITE AND OFF-SITE, INCLUDING TRENCHES AND SURFACES ON PUBLIC ROAD ALLOWANCES TO EXISTING CONDITIONS OR BETTER TO THE SATISFACTION OF THE CITY OF OTTAWA AND ENGINEER.
 - REMOVE FROM SITE ALL EXCESS EXCAVATED MATERIAL, ORGANIC MATERIAL AND DEBRIS UNLESS OTHERWISE INSTRUCTED BY ENGINEER. EXCAVATE AND REMOVE FROM SITE ANY CONTAMINATED MATERIAL. ALL CONTAMINATED MATERIAL SHALL BE DISPOSED OF AT A LICENSED LANDFILL FACILITY.
 - ALL ELEVATIONS ARE GEODETIC.
 - REFER TO GEOTECHNICAL DESKTOP STUDY (No. 2356242-001, DATED MARCH 27, 2023), PREPARED BY WSP FOR SUBSURFACE CONDITIONS. CONSTRUCTION RECOMMENDATIONS, AND GEOTECHNICAL INSPECTION REQUIREMENTS. THE GEOTECHNICAL CONSULTANT IS TO REVIEW ON-SITE CONDITIONS AFTER EXCAVATION PRIOR TO PLACEMENT OF THE GRANULAR MATERIAL.
 - REFER TO ARCHITECTS AND LANDSCAPE ARCHITECTS DRAWINGS FOR BUILDING AND HARDSURFACE AREAS AND DIMENSIONS.
 - REFER TO STORMWATER MANAGEMENT REPORT (R-2023-014) PREPARED BY NOVATECH ENGINEERING CONSULTANTS LTD.
 - SAW CUT AND KEY GRIND ASPHALT AT ALL ROAD CUTS AND ASPHALT TIE IN POINTS AS PER CITY OF OTTAWA STANDARDS (R10).
 - PROVIDE LINE/PARKING PAINTING.
 - CONTRACTOR TO PROVIDE THE CONSULTANT WITH A GENERAL PLAN OF SERVICES INDICATING ALL SERVICING AS-BUILT INFORMATION SHOWN ON THIS PLAN. AS-BUILT INFORMATION MUST INCLUDE: PIPE MATERIAL, SIZES, LENGTHS, SLOPES, INVERT AND TIG ELEVATIONS, STRUCTURE LOCATIONS, VALVE AND HYDRANT LOCATIONS, TWM ELEVATIONS AND ANY ALIGNMENT CHANGES, ETC.

- SEWER NOTES:**
- SPECIFICATIONS:

ITEM	SPEC. No.	REFERENCE
CATCHBASIN (600x600mm)	705.010	OPSD
CB, FRAME & COVER	400.020	OPSD
SEWER TRENCH	S8 & S7	CITY OF OTTAWA
STORM SEWER	PVC DR 35	CITY OF OTTAWA
SANITARY SEWER	PVC DR 35	CITY OF OTTAWA
SEWER TRENCH - BEDDING (GRANULAR A)		
COVER (GRANULAR A OR GRANULAR B TYPE I, WITH MAXIMUM PARTICLE SIZE=25mm)	1109.030	OPSD
 - SERVICES ARE TO BE CONSTRUCTED TO 1.0m FROM FACE OF BUILDING AT A MINIMUM SLOPE OF 1.0%.
 - PIPE BEDDING, COVER AND BACKFILL ARE TO BE COMPACTED TO AT LEAST 85% OF THE STANDARD PROCTOR MAXIMUM DRY DENSITY. THE USE OF CLEAR CRUSHED STONE AS A BEDDING LAYER SHALL NOT BE PERMITTED.
 - FLEXIBLE CONNECTIONS ARE REQUIRED FOR CONNECTING PIPES TO MANHOLES (FOR EXAMPLE KOR-N-SEAL, PSX, POSITIVE SEAL AND DURASEAL). THE CONCRETE CRADLE FOR THE PIPE CAN BE ELIMINATED.
 - THE OWNER SHALL REQUIRE THAT THE SITE SERVICING CONTRACTOR PERFORM FIELD TESTS FOR QUALITY CONTROL OF ALL SANITARY SEWERS. LEAKAGE TESTING SHALL BE COMPLETED IN ACCORDANCE WITH OPS 410.07.16, 410.07.16.04 AND 407.07.24. DYE TESTING IS TO BE COMPLETED ON ALL SANITARY SERVICES TO CONFIRM PROPER CONNECTION TO THE SANITARY SEWER MAIN. THE FIELD TESTS SHALL BE PERFORMED IN THE PRESENCE OF A CERTIFIED PROFESSIONAL ENGINEER WHO SHALL SUBMIT A CERTIFIED COPY OF THE TEST RESULTS.
 - STORM MANHOLES AND CBMS ARE TO HAVE 300mm SUMPS UNLESS OTHERWISE INDICATED.
 - CONTRACTOR TO TELEVISION (CCTV) ALL PROPOSED SEWERS, 200mm Ø OR GREATER PRIOR TO BASE COURSE ASPHALT. UPON COMPLETION OF CONTRACT, THE CONTRACTOR IS RESPONSIBLE TO FLUSH AND CLEAN ALL SEWERS & APPURTENANCES.
 - INSULATE ALL STORM AND SANITARY SEWERS THAT HAVE LESS THAN 2.0m OF COVER.
 - BACK FLOW VALVES FOR STORM SERVICE CONNECTIONS ARE REQUIRED. REFER TO MECHANICAL DRAWINGS.

- WATERMAIN NOTES:**
- SPECIFICATIONS:

ITEM	SPEC. No.	REFERENCE
WATERMAIN TRENCHING	W17	CITY OF OTTAWA
THERMAL INSULATION IN SHALLOW TRENCHES	W22	CITY OF OTTAWA
WATERMAIN CROSSING BELOW SEWER	W26	CITY OF OTTAWA
WATERMAIN	PVC DR 18	CITY OF OTTAWA
WATERMAIN VALVE & VALVE BOX	W24	CITY OF OTTAWA
 - SUPPLY AND CONSTRUCT ALL WATERMANS AND APPURTENANCES IN ACCORDANCE WITH THE CITY OF OTTAWA STANDARDS AND SPECIFICATIONS. EXCAVATION, INSTALLATION, BACKFILL AND RESTORATION OF ALL WATERMANS BY THE CONTRACTOR. CONNECTIONS AND SHUT-OFFS AT THE MAIN AND CHLORINATION OF THE WATER SYSTEM SHALL BE PERFORMED BY CITY OFFICIALS.
 - WATERMAIN SHALL BE MINIMUM 2.4m DEPTH BELOW GRADE UNLESS OTHERWISE INDICATED. INSULATION BE PROVIDED PER CITY OF OTTAWA DETAIL W22, IF 2.4m DEPTH CANNOT BE PROVIDED.
 - PROVIDE MINIMUM 0.3m CLEARANCE BETWEEN OUTSIDE OF PIPES AT ALL CROSSINGS.
 - WATER SERVICE IS TO BE CONSTRUCTED TO WITHIN 1.0m OF FOUNDATION WALL AND CAPPED, UNLESS OTHERWISE INDICATED.

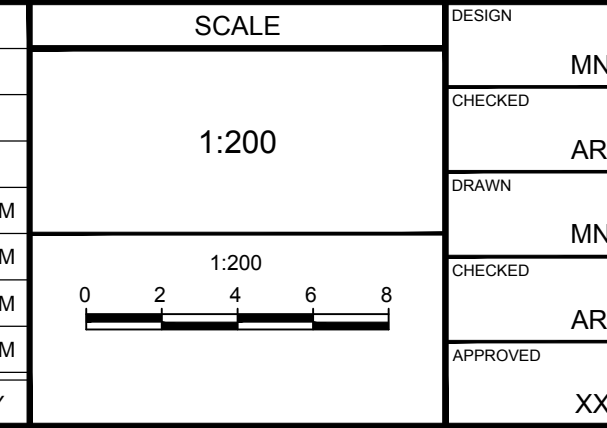
SOURCE REFERENCE:
 SITE PLAN: NEUF ARCHITECTS / SITE PLAN - SPA_A103, REVISION 3
 NEUF ARCHITECTS / SITE PLAN (PHASE 1) - SPA_A104, REVISION 3
 EXISTING WATER, SEWER, AND UTILITIES APPROXIMATE LOCATION: CITY OF OTTAWA UCC CAD FILE PROVIDED BY CITY OF OTTAWA MARCH 3, 2023
 EXISTING WATER AND SEWER APPROXIMATE ELEVATIONS: CITY OF OTTAWA RECORD DRAWINGS E-35, SHEET 4 OF 4, DRAWING J-34 SHEET 6 OF 10, DRAWING NO. 3071 SHEET2, DRAWING NO. PPA_ID514-2036 (STANTEC)

NOTE:
 THE POSITION OF ALL POLE LINES, CONDUITS, WATERMANS, SEWERS AND OTHER UNDERGROUND AND OVERGROUND UTILITIES AND STRUCTURES IS NOT NECESSARILY SHOWN ON THE CONTRACT DRAWINGS, AND WHERE SHOWN, THE ACCURACY OF THE POSITION OF SUCH UTILITIES AND STRUCTURES IS NOT GUARANTEED. BEFORE STARTING WORK, DETERMINE THE EXACT LOCATION OF ALL SUCH UTILITIES AND STRUCTURES AND ASSUME ALL LIABILITY FOR DAMAGE TO THEM.

NO.	REVISION	DATE	BY
4.	REVISED PER COMMENTS	APR 26/24	ARM
3.	REVISED PER COMMENTS	MAR 8/24	ARM
2.	ISSUED FOR COORDINATION	DEC. 1/23	ARM
1.	ISSUED FOR COORDINATION	NOV 24/23	ARM

NO.	REVISION	DATE	BY
4.	REVISED PER COMMENTS	APR 26/24	ARM
3.	REVISED PER COMMENTS	MAR 8/24	ARM
2.	ISSUED FOR COORDINATION	DEC. 1/23	ARM
1.	ISSUED FOR COORDINATION	NOV 24/23	ARM

NO.	REVISION	DATE	BY
4.	REVISED PER COMMENTS	APR 26/24	ARM
3.	REVISED PER COMMENTS	MAR 8/24	ARM
2.	ISSUED FOR COORDINATION	DEC. 1/23	ARM
1.	ISSUED FOR COORDINATION	NOV 24/23	ARM



FOR REVIEW ONLY

PROFESSIONAL ENGINEER
 A.A. RONQUE
 100616238
 April 26, 2024
 PROVINCE OF ONTARIO

PROFESSIONAL ENGINEER
 A.R. MCAULLEY
 100141256
 April 21, 2024
 PROVINCE OF ONTARIO

NOVATECH
 Engineers, Planners & Landscape Architects
 Suite 200, 240 Michael Cowpland Drive
 Ottawa, Ontario, Canada K2M 1P6
 Telephone: (613) 254-9643
 Facsimile: (613) 254-5867
 Website: www.novatech-eng.com

LOCATION
 170 SLATER STREET, CITY OF OTTAWA
 PROPOSED RESIDENTIAL HIGH-RISE

DRAWING NAME
 GENERAL PLAN OF SERVICES -
 PHASE 2 (NORTH TOWER)

PROJECT NO.
 123013

REV
 REV # 4

DRAWING NO.
 123013-GP2