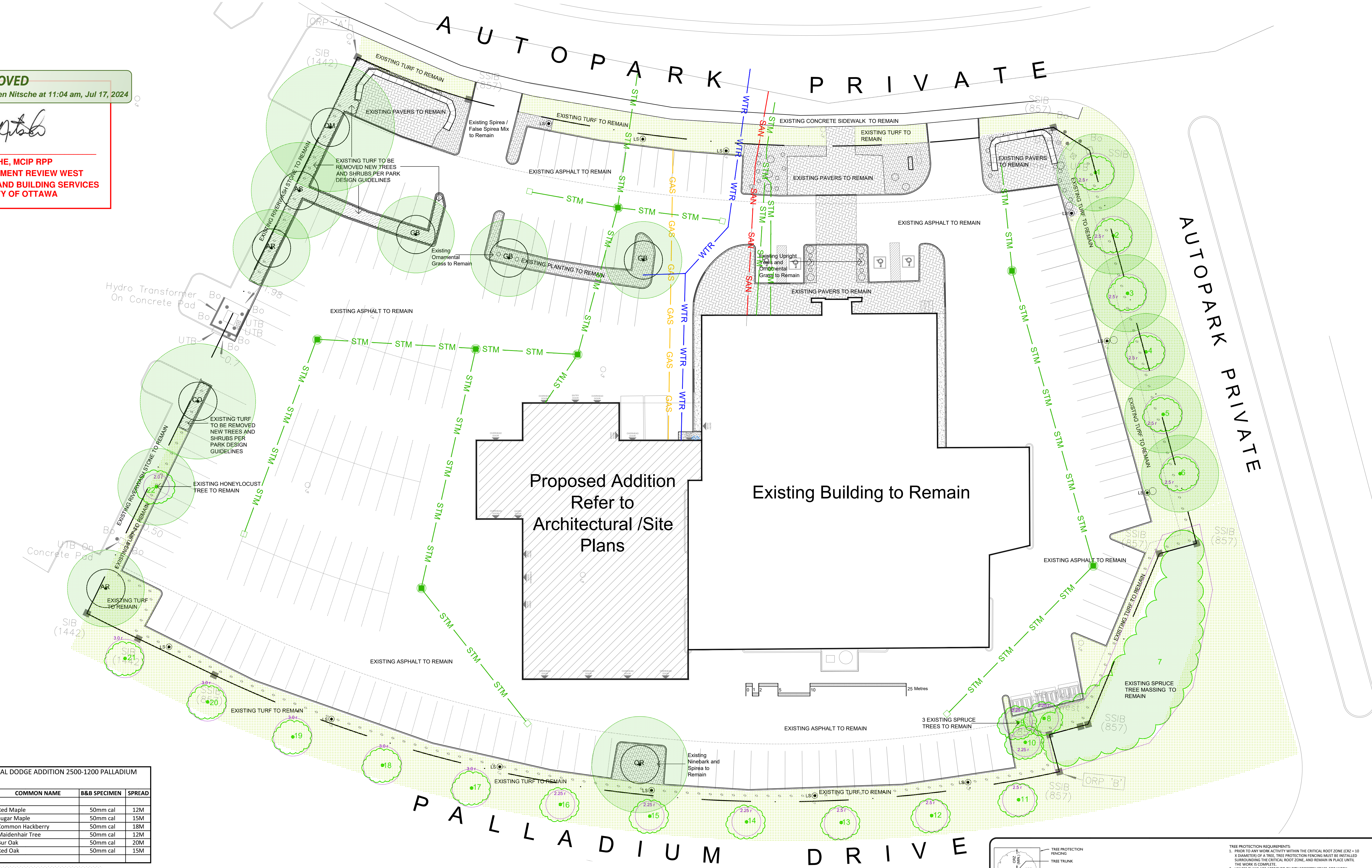


APPROVED
By Kersten Nitsche at 11:04 am, Jul 17, 2024

Kersten Nitsche

**KERSTEN NITSCHKE, MCIP RPP
MANAGER (A), DEVELOPMENT REVIEW WEST
PLANNING, DEVELOPMENT AND BUILDING SERVICES
DEPARTMENT, CITY OF OTTAWA**

Drawing Remains the Property of/ Copyright Reserved by Gino J. Aiello. Landscape Architect. Do Not Use or Reproduce Without Approval of Gino J. Aiello.
NOT To Be Used For Construction Unless Indicated by Revision: "FOR LANDSCAPE CONSTRUCTION"
Contractor is Responsible for Verification of Site Locations of all Utilities. Report any Discrepancies Between Site and Drawing Immediately to Gino J. Aiello. Do NOT Proceed Until Clarified.
TURF AREAS TO BE SOD C/W 150MM DEPTH TOPSOIL ON APPROVED SUBGRADE | SOD TO BE #1 GRADE TURF GRASS NURSERY SOD PER NSGA - Fine Fescue/Kentucky Bluegrass Sod | PLANTING MIX TO BE APPROVED BY LANDSCAPE ARCHITECT | PLANT MATERIAL TO MEET CNLA STANDARDS/BE APPROVED BY LANDSCAPE ARCHITECT PRIOR TO PLANTING ALL MATERIALS & WORK TO BE MAINTAINED UNTIL FINAL ACCEPTANCE. (MOWING TURF, WEEDING BEDS, WATERING TURF & PLANTS) & INCLUDE 1 YEAR WARRANTY FROM DATE OF FINAL ACCEPTANCE | PROVIDE WATERING OF ALL PLANT MATERIAL AS REQUIRED FOR PROPER ESTABLISHMENT, UNTIL END OF WARRANTY PERIOD | REFER TO CIVIL ENGINEER'S DRAWING FOR ELEVATIONS / GRADING |
The Landscape Plan is to be read in conjunction with the grading, servicing, site and survey plan | Bare root material to be planted in season only | All plant material locations to be staked on site by the landscape contractor and checked by the landscape architect prior to planting | All trees to be preserved on or directly adjacent to the site will be protected | Plant material are to be installed a minimum of 3.0m away from any part of any hydro transformer, 3.0m corridor between a fire hydrant and the curb, a 2.5m radius beside or behind a fire hydrant, 2.0m from any servicing/utility line or structure |



LANDSCAPE LEGEND

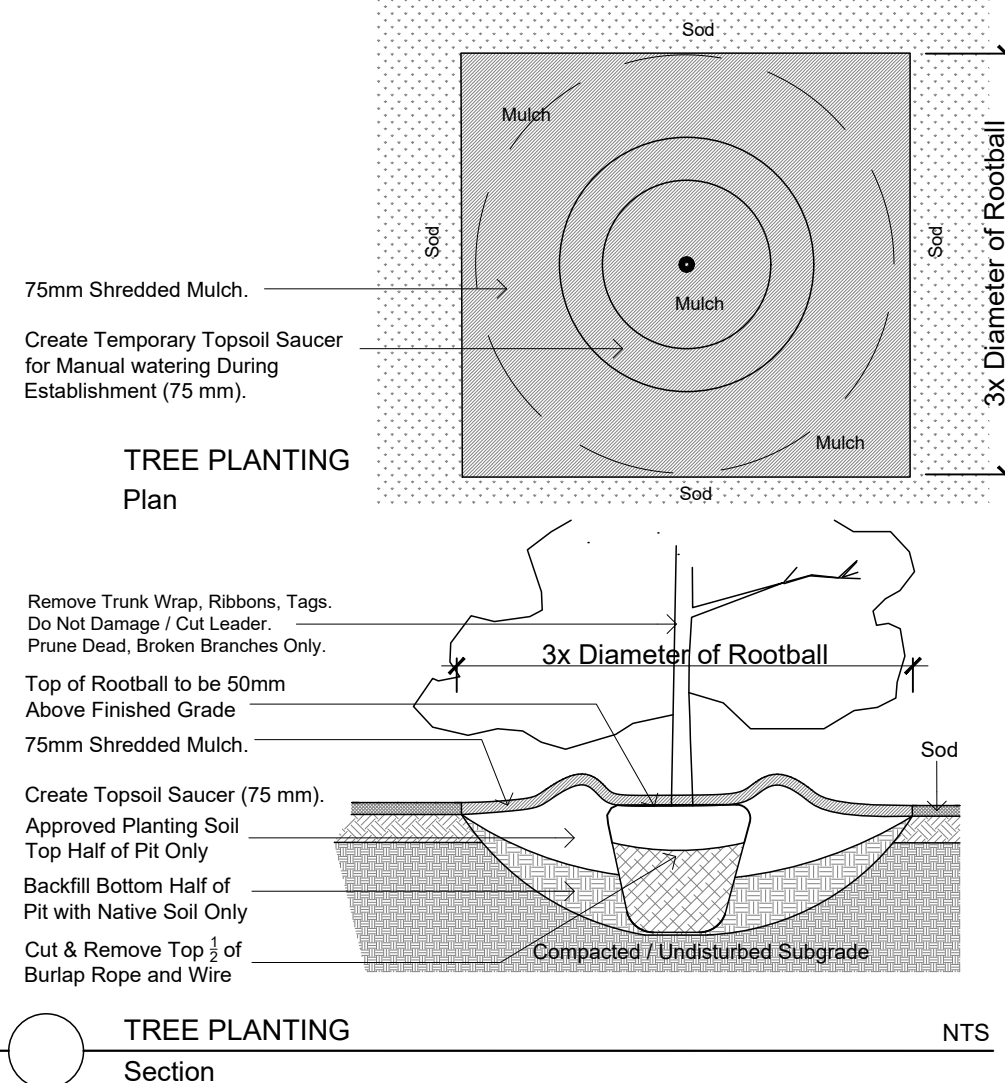
- Existing Tree to Remain
- Protection for Existing Trees
- Existing Planting Bed
- Existing Turf
- Proposed Deciduous Tree
- 40 Year Outlook according to Durr
- Shrub Planting Bed

BELOW GRADE SERVICES REFER TO CIVIL/CUP

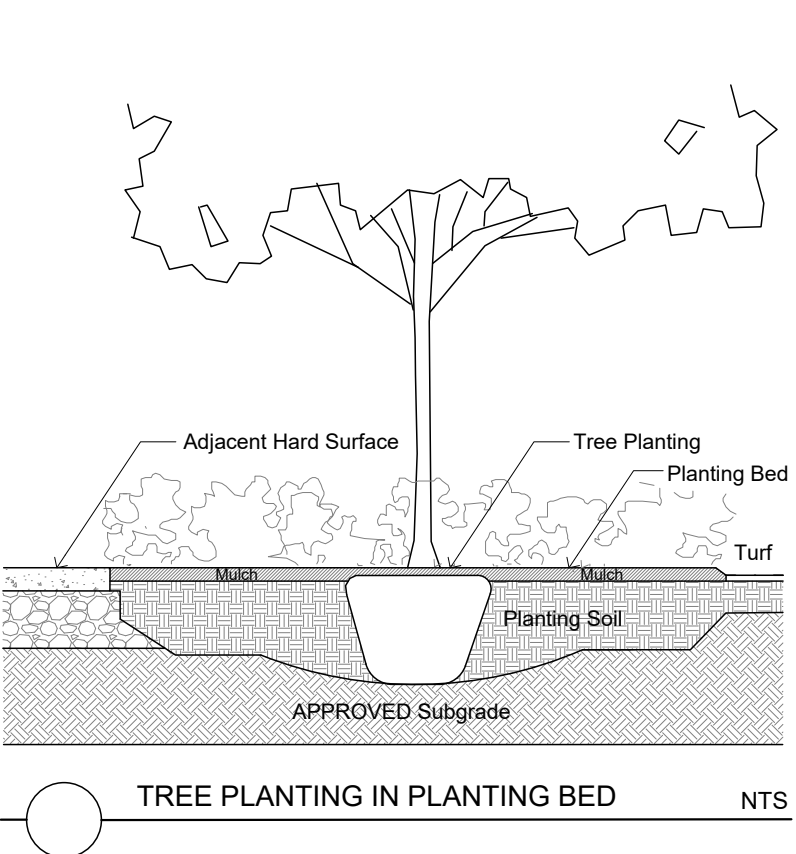
- WTR - U/G Water Service
- STM - U/G Storm Service
- SAN - U/G Sanitary Service
- GAS - U/G Gas Service
- FD - Siamese Connection
- Light Standard
- Catch Basin Manhole
- Storm/Sanitary/Bell Manhole
- Catch Basin
- Fire Hydrant

TREE LIST BUTLER AUTOMOTIVE GROUP CAPITAL DODGE ADDITION 2500-1200 PALLADIUM DRIVE KANATA

CODE	QUANTITY	BOTANICAL NAME	COMMON NAME	B&B SPECIMEN	SPREAD
AR	2	Acer rubrum	Red Maple	50mm cal	12M
AS	1	Acer saccharum	Sugar Maple	50mm cal	15M
CO	1	Celtis occidentalis	Common Hackberry	50mm cal	18M
GB	3	Ginkgo biloba	Maidenhair Tree	50mm cal	12M
QM	1	Quercus macrocarpa	Bur Oak	50mm cal	20M
QR	1	Quercus rubra	Red Oak	50mm cal	15M
TOTALS	9				



Code	Qty.	Botanical Name	Common Name	Size	Condition
HK	125	Hypericum kalimianum	Kalm St. John's Wort	40cm Ht.	Pot
SA	50	Symphoricarpos albus	Snowberry	60cm Ht.	Pot
SA	50	Spiraea alba	Meadowsweet	60cm Ht.	Pot



TREE #	SIZE	CRZ	TYPE	CONDITION	RECOMMENDATION ON / OFF SITE
1	25cm dbh	2.5m Radius	Gleditsia triacanthos var.	Good to Very Good	PROTECT / RETAIN
2	25cm dbh	2.5m Radius	Gleditsia triacanthos var.	Good to Very Good	PROTECT / RETAIN
3	25cm dbh	2.5m Radius	Gleditsia triacanthos var.	Good to Very Good	PROTECT / RETAIN
4	25cm dbh	2.5m Radius	Gleditsia triacanthos var.	Good to Very Good	PROTECT / RETAIN
5	25cm dbh	2.5m Radius	Gleditsia triacanthos var.	Good to Very Good	PROTECT / RETAIN
6	25cm dbh	2.5m Radius	Gleditsia triacanthos var.	Good to Very Good	PROTECT / RETAIN
7	25cm dbh	2.5m Radius	Picea pungens +15 Trees	Good to Very Good	PROTECT / RETAIN
8	2.25m dbh	2.25m Radius	Picea pungens	Good	PROTECT / RETAIN
9	2.25m dbh	2.25m Radius	Picea pungens	Good	PROTECT / RETAIN
10	2.25m dbh	2.25m Radius	Picea pungens	Good	PROTECT / RETAIN
11	25cm dbh	2.5m Radius	Quercus rubra	Good to Very Good	PROTECT / RETAIN
12	25cm dbh	2.5m Radius	Quercus rubra	Good to Very Good	PROTECT / RETAIN
13	25cm dbh	2.5m Radius	Quercus rubra	Good to Very Good	PROTECT / RETAIN
14	23cm dbh	2.5m Radius	Quercus macrocarpa	Good to Very Good	PROTECT / RETAIN
15	24cm dbh	2.5m Radius	Quercus macrocarpa	Good to Very Good	PROTECT / RETAIN
16	23cm dbh	2.5m Radius	Quercus macrocarpa	Good to Very Good	PROTECT / RETAIN
17	30cm dbh	3.0m Radius	Quercus rubra	Good to Very Good	PROTECT / RETAIN
18	30cm dbh	3.0m Radius	Quercus rubra	Good to Very Good	PROTECT / RETAIN
19	30cm dbh	3.0m Radius	Quercus rubra	Good to Very Good	PROTECT / RETAIN
20	30cm dbh	3.0m Radius	Quercus rubra	Good to Very Good	PROTECT / RETAIN
21	30cm dbh	3.0m Radius	Quercus rubra	Good to Very Good	PROTECT / RETAIN
22	20cm dbh	2.0m Radius	Gleditsia triacanthos var.	Good	PROTECT / RETAIN

TREE PROTECTION SPECIFICATION

1. TREE PROTECTION FENCING MUST BE AT LEAST 1.2M IN HEIGHT, AND CONSTRUCTED OF RIGID OR FRAMED MATERIALS (E.G. MODULOC, STEEL, PLYWOOD HOARDING, OR CONCRETE). FENCING MUST BE INSTALLED SURROUNDING THE CRITICAL ROOT ZONE, AND REMAIN IN PLACE UNTIL THE WORK IS COMPLETE.
2. FENCING MUST BE APPROVED BY CITY FORESTRY STAFF. FOR WORK WITHIN THE CRZ, FENCING MUST BE APPROVED BY CITY FORESTRY STAFF PRIOR TO THE COMMENCEMENT OF WORK.
3. THE LOCATION OF THE TREE PROTECTION FENCING MUST BE DETERMINED BY AN ARBORIST AND SET OUT ON ANY ASSOCIATED PLANS FOR THE SITE. (E.G. TREE CONSERVATION REPORT, TREE INFORMATION REPORT, ETC.)
4. THE CRZ OF ALL TREES PROTECTED BY THIS SPECIFICATION MUST BE PROTECTED BY THE PLACEMENT OF PLYWOOD, WOOD CHIP, OR STEEL PLATING OVER THE ROOTS FOR PROTECTION OF THE PROTECTIVE FENCING AND CARE OF ROOTS WHERE INCONVENIENT.
5. IF THE FENCED TREE PROTECTION AREA MUST BE REMOVED TO FACILITATE CONSTRUCTION, MITIGATION MEASURES MUST BE PRESCRIBED BY AN ARBORIST AND APPROVED BY CITY FORESTRY STAFF. THESE MEASURES MAY INCLUDE THE PLACEMENT OF PLYWOOD, WOOD CHIP, OR STEEL PLATING OVER THE ROOTS FOR PROTECTION OF THE PROTECTIVE FENCING AND CARE OF ROOTS WHERE INCONVENIENT.
6. THE CITY'S TREE PROTECTION BY-LAW, 2020-240 PROTECTS BOTH CITY-OWNED TREES, CITY-WIDE, AND PRIVATELY OWNED TREES WITHIN THE URBAN AREA. PLEASE REFER TO WWW.CITYOFOTTAWA.CA/TREELAW FOR MORE INFORMATION ON HOW THE TREE BY-LAW APPLIES.

SCALE: NTS
DATE: MARCH 2021
DRAWING NO.: 1 of 1

PROPERTY OWNER
BUTLER AUTOMOTIVE GROUP
PROPERTY OWNERS ADDRESS
GJA INC.
GINO J. AIELLO | LANDSCAPE ARCHITECT
GJAL.COM | 613 286 5130 | GINO@GJAL.COM
1155 BURNHAMTHORPE ROAD UNIT #11, OTTAWA, ONTARIO | K1T 3C2

CAPITAL DODGE ADDITION
2500 - 1200 PALLADIUM DRIVE KANATA
Landscape Plan
Scale: 1:300
#14568

2 SECOND SUBMISSION SPC 2023 11 10
1 FIRST SUBMISSION SPC 2023 07 01
0 REVIEW/COORDINATION 2023 06 01

Revision Date

D07-12-24-0029